



AVRASYA CONSTRUCTION

Company Presentation

PROFESSIONAL SUCCESS
IN THE CONSTRUCTION
INDUSTRY



Euphoria[®]

www.avrasyaexport.com



ABOUT US

AVRASYA is a trustable and reputable company which is located in Istanbul-Turkey. Our company was established to meet the needs of construction industry and wholesaler companies. We are active in production, trading, contracting and engineering for construction sector. AVRASYA helps fulfill the demand for civil engineering companies. Our company offers direct deliveries of infrastructure construction materials to our customers from our warehouses and customs zones of Turkey. We supply infrastructure construction materials as GRP pipes, Ductile iron pipes, Spiral welded pipes, Pumps, Valves etc. We are giving EPC service from consultation, feasibility study, basic and detailed design, procurement, construction, supervision, to test and commissioning in construction projects.

AVRASYA also provide services to all public and private institutions to make infrastructure and superstructure commitments.



OUR MISSION

It is well known in the marketplace that buyer-supplier relationships can offer potential strategic advantages to both partners. However, less is known about how firms make the decision to work closely together to "expand the pie" of benefits.

AVRASYA – A company that wishes to become your successful partner through our world-class products and customer service. It is our mission to assist our customers to become winners in their own business field.

Our experienced team is dedicated to providing best quality products and convinced service to our clients.

OUR VISION

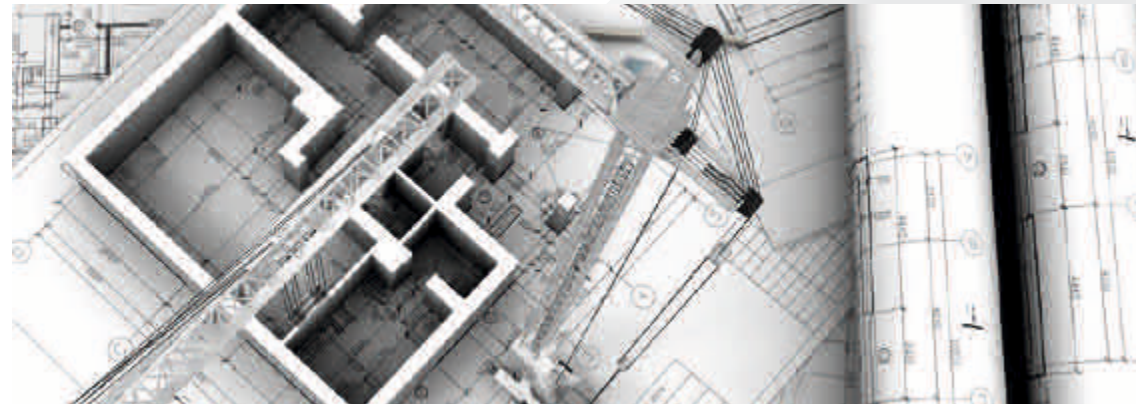
The quality policy of Avrasya aims to maximize the development of the company towards the satisfaction of employees and business partners by providing the best products in accordance with the management principles and the long-term vision of the company's development . As a goal, we set ourselves:

Understanding customer needs and integrating them into our daily work - anticipating and exceeding their requirements.

Mutual development with suppliers and customers towards creating products with high added value (Self-reliance project)

Continuous improvement of our employees' qualifications and their motivation (Passionate & Engaged Team)

Continuous improvement of the effectiveness of the implemented quality management system towards achieving global goals.



WHY AVRASYA GROUP?



**MODERN
TECHNOLOGY**



**POWERFUL
EQUIPMENT**



**QUALITY
MATERIALS**



**PROFESSIONAL
TEAM**

OUR ACTIVITY AREAS

- ✓ INFRASTRUCTURE
- ✓ DRINKING WATER PROJECT
- ✓ AGRICULTURAL IRRIGATION
- ✓ WASTEWATER TREATMENT
- ✓ SUBSTATIONS
- ✓ UNDERPASS AND OVERPASS
- ✓ TRANSMISSION LINES
- ✓ HOUSING PROJECTS
- ✓ ENERGY FACILITIES
- ✓ INDUSTRIAL BUILDINGS
- ✓ MEDICAL BUILDINGS
- ✓ EDUCATION SERVICE BUILDINGS
- ✓ SHOPPING MALL BUILDINGS
- ✓ PARK CONSTRUCTION and LANDSCAPE WORKS



OUR SERVICES



Construction

We provide professional construction support to Public and Private Institutions.



Building Materials

Wholesale and retail sales of building materials that meet the expectations of our customers.



Machinery

We supply construction machinery from Turkish free zones and company warehouses to our customers .



Projecting

Avrasya Group provides project support to its customers with its service quality and innovative structure.



Engineering

We provide services in architectural design project applications with our expert and experienced architects.



Turnkey Projects

We provide support in turnkey construction and renovation works with our expert team.



Consultancy

We implement your projects with all its processes and provide consultancy services



Renovation

We offer project support for renovation of Historical buildings, monuments, ruins and restoration.

CIVIL ENGINEERING PROJECTS





GRP/FRP PIPE INSTALLATION

ENGINEERING AND CONSULTANCY

Glass Reinforced Polyester / Fiberglass Reinforced Polyester
Pipe Technology

Fiberglass pipe is a composite material system produced from glass fiber reinforcements, thermosetting plastic resins and additives. By selecting the right combination and amount of materials the designer can create a product to meet the most demanding requirements.

Still proper design and installation processes are crucial for the long lifetime of the GRP/FRP Pipes which is at least 50 years. In this regard, we are aiming to help our customers get the maximum performance from the product.

Services

- GRP PIPE INSTALLATION
- GRE PIPE INSTALLATION
- GRP FITTINGS PRODUCTION
- GRE SPOOL PREFABRICATION
- GRP PIPE LAMINATION
- INDUSTRIAL PIPING
- GRP MANHOLE and TANK PRODUCTION
- VALVES, STEEL PIPE, DUCTILE IRON PIPE, HDPE PIPE
- CONSULTANCY OF PIPELINE SYSTEMS



→ GRE PIPE INSTALLATION

GRE pipe installation will be under control of our qualified and certified technicians according to the international standards.

→ GRE SPOOL PREFABRICATION

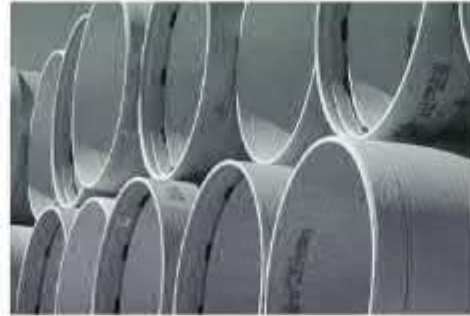
In our workshop, GRE spools are prefabricated in accordance with the project and isometric drawings.

→ GRP FITTING PRODUCTION

Elbow, Manhole, Tank, Tee Part, Reduction, Flange and Special Piece Production.



GRP/FRP Pipe Installation



GRP/FRP Pipe Supply



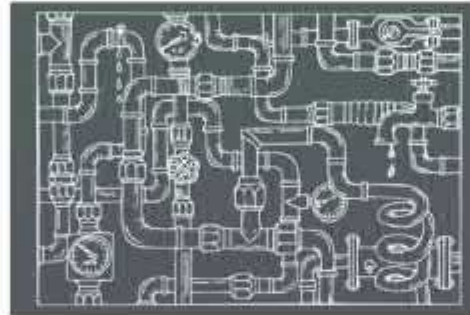
Pipeline Repairing and Rehabilitation



GRP/FRP Sub-Marine Applications



GRP/FRP Fitting Production



Hydrolic Calculations



GRP/FRP Tank and Manholes



Raw Materials Supply



GRP/FRP Lamination[Butt-Wrap]



GRP/FRP Pipeline Design



GRP/FRP Technical Consultancy



Jacking Pipe / Slip-Lining



GRP and GRE Pipe Spool Prefabrication Fiberglass Pipe Spool Production

YYour solution partner for GRP and GRE
Fiberglass Pipe applications with years of
experience. Please contact us for any
questions you may have.

www.avrasyaexport.com



CONTACT



info@avrasyaexport.com



+90 532 244 18 31



+90 212 503 00 02



www.avrasyaexport.com

Euphoria

Engineering Solutions in Fiberglass Pipe Technology



WATER TREATMENT SYSTEMS



WASTE WATER TREATMENT & RE-USE SYSTEMS

An alternative to the centralized way of wastewater treatment has begun to evolve nowadays: the application of on-site WWTs as a decentralized way of sewage treatment. These small-scale units have high priority in low population density areas, where the discharge of sewage to a central WWTP through a drainage system is not profitable. Constructing too long drainage conduits is not rational for two reasons: high costs and stagnant wastewater. The Council Directive 91/271/EEC concerning urban wastewater treatment states that where wastewater collection systems are not justified either by economic or environmental aspects, individual systems should be used



WATER TREATMENT SYSTEMS



ULTRAFILTRATION WATER TREATMENT SYSTEMS

Ultra filtration is a membrane separation process in which a porous membrane is used to separate or reject colloidal and suspended solids also with removing of bacteria and viruses with 0,02 micron filtration rate.

UF systems are used in:

- Municipalities
- Food and Beverage
- Military zones
- Pre treatment of RO
- Industrial zones
- Water recycling

> Transformers

Tailor Made Products

ODT

Oil Distribution Transformers

- From 100kVA to 3150kVA
- Up to 36 kV
- Conservator, free breathing, corrugated wall hermetic or gas cushion hermetic
- Corrugated or flat wall design



sMPT

Small Power Transformers

- 3150 kVA to 10 MVA
- Up to 72.5 kV
- Special winding design
- Conservator, free breathing, sealed hermetic or gas cushion hermetic
- Corrugated wall up to 10MVA



MPT

Medium Power Transformers

- Up to 135 MVA
- Up to 170 kV
- Breathing for all ranges
- Gas-cushion up to 30MVA
- Customs solutions & Smart Transformers



Mineral Oil as standard
Natural Ester available
Synthetic Ester available



Ex-proof Solution
up to 135MVA & 170kV
IECex or ATEX

ONAN, ONAF, OFAF, ODAF
OFWF, ODWF options
*K replaces O for ester oil

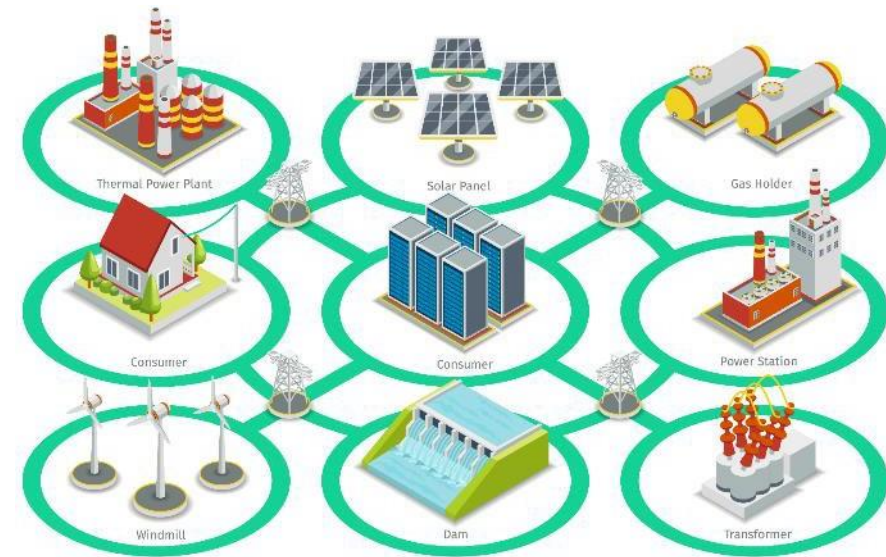


> Special Solutions

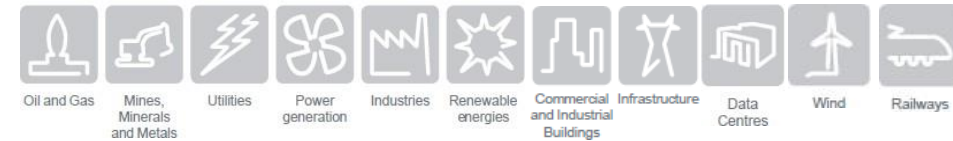
High Tech Products

> Special Transformers:

- **Ex-proof:** Explosion-proof transformers acc.to ATEX or IEC-ex
- **Solaris:** Solar farm transformers
- **Nacela:** Wind turbine transformer w/ water cooling & ester-based oil
- **Rectiva:** Rectifier transformers
- Extra-small dimension w/ high-temp insulation & ester-based oil
- Traction transformer
- Current-limiting transformers
- Shunt reactors
- Mobile substation transformers
- Phase-shifting transformers



Applications



> Our Strengths

- Strong experience, high quality of standards and customized products with international, regional and national certifications
- Customer oriented approach with tailor-made offer for key markets and specific industrial applications
- Innovative Solutions such as High efficiency, low noise, compact & explosion proof Transformers

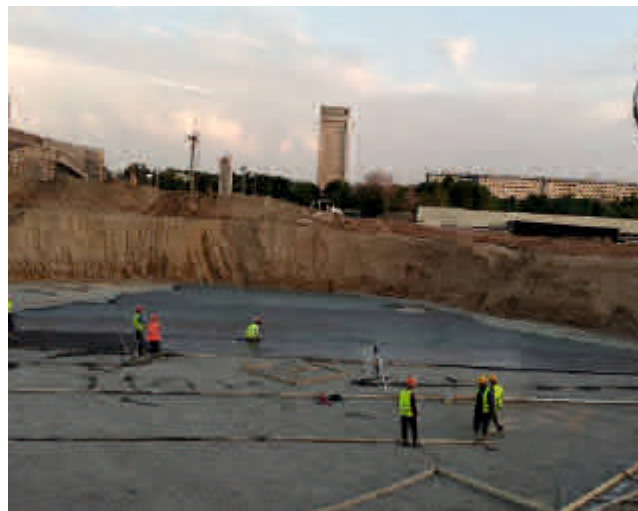
> Our Commitments

- Design, Manufacture and Deliver transformers at the best cost, quality and delivery time

A full-page background image showing a construction site at sunset. A large yellow tower crane is positioned on the right side of the frame. In the foreground, four construction workers in high-visibility vests and hard hats are silhouetted against the bright orange and yellow sky. They are working on a concrete structure, with one worker carrying a long wooden beam. The overall scene is dramatic and industrial.

Superstructure Construction

Reinforced Concrete Manufacturing



Reinforced Concrete Manufacturing



Reinforced Concrete Manufacturing



Concrete Road Works



Industrial Buildings



Substation Construction



Euphoria

FROM PRODUCTION TO ASSEMBLY
ÜRETİMDEN MONTAJA*

ORIGINAL ARCHITECTURE
ÖZGÜN MİMARİ*

HIGH SOUND AND HEAT INSULATION
YÜKSEK SES VE ISI İZOLASYONU*

EARTHQUAKE RESISTANT
DEPREME KARŞI DAYANIKLI*

LIGHT STEEL STRUCTURES
HAFİF ÇELİK YAPILAR*



TABLE OF CONTENTS/ İÇİNDEKİLER*

NUMBER OF PAGES/
SAYFA SAYISI

01	TEOTECH
02-07	SYSTEM DETAIL/ SİSTEM DETAYI
08-11	EDUCATIONAL BUILDINGS/ EĞİTİM YAPILARI*
12-15	OFFICE BUILDINGS/ OFİS YAPILARI*
16-19	COMMERCIAL BUILDINGS/ TİCARİ YAPILAR*
20-22	HEALTH STRUCTURES/ SAĞLIK YAPILARI*
23-24	SOCIAL STRUCTURES/ SOSYAL YAPILAR*
25-27	TOURISM STRUCTURES/ TURİZM YAPILARI*
28-31	INDUSTRIAL BUILDINGS/ ENDÜSTRİYEL YAPILAR*
32-38	PUBLIC BUILDINGS/ KAMUSAL YAPILAR*
39-42	MULTIPLE PROJECTS/ ÇOKLU PROJELER*
43-50	SINGLE STOREY/ TEK KATLI*
51-61	TWO STOREY/ İKİ KATLI*
62-63	TRIANGLE HOUSE/ ÜÇGEN EV*
64-67	TINY HOUSE/ TEKERLEKLİ EV*
68-69	TEOCAD PROGRAM
70-73	INTERIOR DETAILS/ İÇ DETAYLAR*
74-77	STEEL IMAGES/ ÇELİK GÖRSELLERİ*
78-81	CONSTRUCTION SITE PHOTOS/ ŞANTIYE FOTOĞRAFLARI*



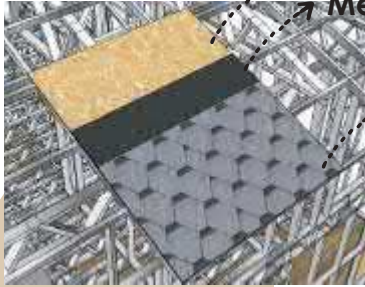
→ Drywall/ Alçıpan
→ Osb Sheet/ Osb Levha

INTERIOR WALL
İÇ DUVAR



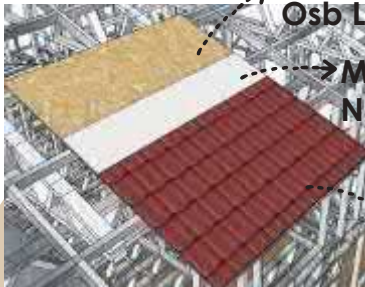
→ Paint/ Boya
→ Plaster/ Sıva
→ Ceramic Adhesive/ Kalekim
→ Net/ File

EXTERIOR WALL
DIŞ DUVAR



→ Osb Sheet/ Osb Levha
→ Membran
→ Shingle/ Şingil

ROOFING
ÇATI KAPLAMA



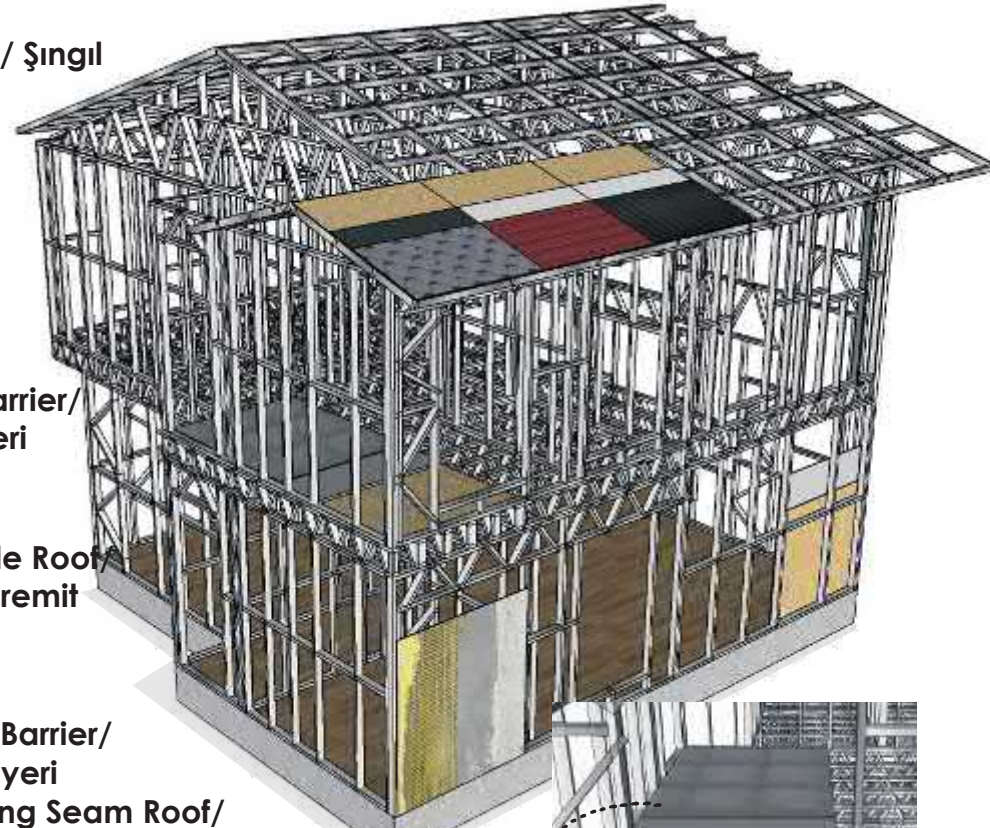
→ Osb Sheet/ Osb Levha
→ Moisture Barrier/ Nem Bariyeri
→ Metal Tile Roof/ Metal Kiremit

ROOFING
ÇATI KAPLAMA



→ Osb Sheet/ Osb Levha
→ Moisture Barrier/ Nem Bariyeri
→ Standing Seam Roof/ Kenet Sac

ROOFING
ÇATI KAPLAMA



→ Floor Ceramics/ Seramik

→ 5 cm Screed Concrete/ 5 cm Şap Betonu

→ Osb Sheet/ Osb Levha



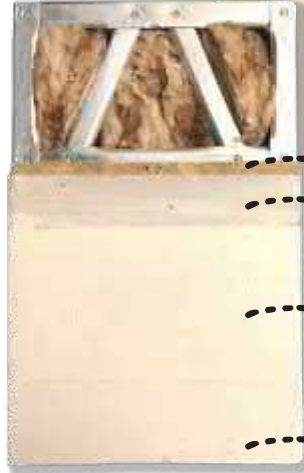
UNDERLAYMENT
ARAKAT DÖŞEME

SYSTEM DETAIL

SİSTEM DETAYI*

3

INTERIOR WALL DETAIL
İÇ DUVAR DETAYI*



- Osb Sheet/ Osb Levha
- Drywall/Alçıpan
- Joint Filler/ Derz Dolgusu
- Joint Plaster/ Derz Alçısı
- 2 Layers of Satin Plaster/
2 Kat Saten Alçı
- Emery/ Zımpara
- Paint/Boya

INSULATION DETAIL
İZOLASYON DETAYI*



- Mineral Rockwool/
Mineral Taşyünü

ELECTRICAL INSTALLATION DETAIL
ELEKTRİK TESİSAT DETAYI*



- Electrical Installation/
Elektrik Tesisatı
- 9 cm-14 cm

EXTERIOR WALL DETAIL
DIŞ DUVAR DETAYI*



- Moisture Barrier/
Nem Bariyeri
- Fibercemet
Net/ File
- Ceramic Adhesive/
Kalekim
- Plaster/ Sıva
- Paint/ Boya

LIGHT STEEL STRUCTURAL ELEMENTS

HAFİF ÇELİK YAPI ELEMANLARI*

4

HAFİF ÇELİK YAPI SİSTEMİ



Hafif Çelik Yapı Sistemi ; 90 mm-140mm. genişliğinde AISI (American Iron and Steel Institute) ve (DIN-EN 10326) Standartlarında Galvanizli Yapı Çeliği İç -Dış Duvar, Tavan, Çatı Panelleri, Çatı Makasları, Kiriş ve Parapetlerin, gereksinim duyulan diğer bina elemanlarıyla birlikte Mühendislik ve Mimari tasarımları yapılarak bilgisayar destekli Roll Form makinalarımızda fabrika sahasında ön üretimi gerçekleştirilmektedir.

LIGHT STEEL CONSTRUCTION SYSTEM

Light Steel Construction System; 90mm-140mm. In AISI (American Iron and Steel Institute) and (DIN-EN 10326) Standards, Galvanized Structural Steel Interior-Exterior Wall, Ceiling, Roof Panels, Roof Trusses, Beams and Parapets, together with other required building elements, Engineering and Architectural designs are made and computer-aided Pre-production is carried out at the factory site in our Roll Form machines.

ÇATI KAPLAMA



Roll Form makinasında tasarlanan çatı panelleri, 90 mm genişliğindedir. Makas ve tavan panellerinin üzerine uygulanır ve bina çevresine 18 cm alın oluşturur. İstenildiği taktirde çatı kaplaması olarak; kenet çatı, metal kiremit, ondüline, sandviç panel veya trapez çatı kaplamaları da uygulanabilmektedir.

ROOFING

Roof panels designed on the Roll Form machine are 90 mm framed. It is applied over the truss and ceiling panels and creates an 18 cm face around the building. As roof covering when requested; Seam roof, metal tile, corrugated, sandwich panel or trapezoidal roof coverings can also be applied.

ELEKTRİK- SIHHİ TESİSAT



Temiz soğuk su tesisatı 1/2"PVC pprc borular ile sıva altı olarak yapının 1 m. dışarısına çekilir.
Plastik kablo kanallarından SIVA ALTI çekilir, 2000 Watt, 220 Volt. Prizlerde NYA 3x2,5 mm² A 2x1,5 mm² kablo kullanılır. Sigortalar prizlerde 16 Amp., aydınlatmada 10 Amp. Konutlardaki tesisat, (sorti ve linyeler) linye hatları 2.5 mm² NYM, aydınlatma 1.5 mm NYM kablo, standartlara uygun tertiplenmiş, sorti ve linye otomatik sigorta ile techizatlandırılmıştır. İnternet için CCTV kablo hattı çekilmektedir.

ELECTRICAL-SANITARY INSTALLATION

The clean cold water installation is drawn 1 m outside of the building with 1/2" PVC pprc pipes as flush mounted. FINISHED from plastic cable ducts, 2000 Watt, 220 Volt. NYA 3x2.5 mm² A 2x1.5 mm² cable is used in sockets. Fuses are 16 Amp in sockets, 10 Amp in lighting. The plumbing in the residences (sortes and lines) line lines are 2.5 mm² NYM, lighting is 1.5 mm NYM cable, arranged in accordance with the standards, and are equipped with sorties and line automatic fuses. CCTV cable line is installed for internet.

İZOLASYON (ISI YALITIMI)



100 mm kalınlığında 44 kg/m³ yoğunlukta - TS 13501,A1 sınıfı yanmaz, (Knauf Insulation Taşyünü) kullanım sıcaklığı -55/+760°C, ısı iletkenlik katsayısı : $\lambda h = 0.040 \text{ W/mK}$ 'dır. BOYA Saten

INSULATION (THERMAL INSULATION)

100 mm thick, 44 kg/m³ density - TS 13501, A1 class non-combustible, (Knauf Insulation Rockwool) usage temperature -55/+760°C, thermal conductivity coefficient: $\lambda h = 0.040 \text{ W/mK}$. PAINT Satin

İÇ/DİŞ DUVAR



Dış yüzeyde nem bariyeri üzerine; Çimento Esaslı Levha - Fibercement (Hekim-board-Tepepan) çeşitli ebatlarda ve şekillerde Düz, Yalibaskı veya Fugalı sistem olarak uygulanır. Veya Boardex-Grandex (Dış cephe kapl. levhası) ve mineral sıva veya grenli boya uygulanır.

12,5 mm Alçıpan (Lafarge-Full-board-Corex) uygulanır. (1200mm x 2500mm). İsteğe bağlı olarak 12,5 mm alçıpanın altına 11 mm OSB veya çift kat alçıpan ekstra fiyatlandırılarak uygulanabilmektedir.

INTERIOR/ OUTER WALL

6

Dış yüzeyde nem bariyeri üzerine; Çimento Esaslı Levha - Fibercement (Hekim-board-Tepepan) çeşitli ebatlarda ve şekillerde Düz, Yalibaskı veya Fugalı sistem olarak uygulanır. Veya Boardex-Grandex (Dış cephe kapl. levhası) ve mineral sıva veya grenli boya uygulanır.

12,5 mm Alçıpan (Lafarge-Full-board-Corex) uygulanır. (1200mm x 2500mm). İsteğe bağlı olarak 12,5 mm alçıpanın altına 11 mm OSB veya çift kat alçıpan ekstra fiyatlandırılarak uygulanabilmektedir.

BOYA



DİŞ DUVAR:

Akrilik dış cephe boyası uygulanır. (Marshall / Filli Boya)

İÇ DUVAR:

Akrilik dış cephe boyası uygulanır. (Marshall / Filli Boya)

PAINT

EXTERIOR WALL:

Acrylic exterior paint is applied. (Marshall / Filli Boya)

INTERIOR WALL:

Acrylic exterior paint is applied. (Marshall / Filli Boya)

KAPI- PENCERE



DOOR-WINDOW

7

DIŞ KAPI:

Kompozit Çelik Kapı: Belirlenen ölçülerde 12 kilitli (Kale kilit) kompozit çelik kapı kullanılmaktadır.

İÇ KAPILAR:

Lake İç Kapı:

KANAT : 42 mm kalınlıktadır. Kapı kanadının ön ve arka kısmında 6mm kalınlığında MDF plaka vardır.

KASA : 40 mm kalınlıktadır. Komple MDF olup kasanın her iki yanına uygulanmaktadır.

PERVAZ : 16mm kalınlıkta, 80 mm genişliğinde bombeli MDF den üretilmiştir.

PENCERE:

EGEPEN DECEUNINCK, PİMAPEN, EUROLINE PVC, Zendow tipi PVC Pencere -Kapı Sistemi, 5 odacıklı ve 70 mm genişliğinde pencereler kullanılmaktadır. Sisteme ait ısı iletim katsayısı (Uf), IFT Rosenheim'da yapılan testler sonucunda 1,4 -1,5 W / m2K olarak belirlenmiştir.

CAMLAR

4+16+4 mm Isı cam - Vasistas Pencere Camları: 4 mm. buzlu cam olarak uygulanır. İsteğe göre Konfor veya Sinerji cam veya karolajlı (çıtalı) cam uygulamaları yapılabilmektedir. SİNEKLİK Sürgü kapılarda pileli, diğer açılır pencerelerde menteşeli sineklik kullanılır.

EXTERIOR DOOR:

Composite Steel Door: In determined dimensions

Composite with 12 locks (Castle lock) steel door is used

INTERIOR DOORS:

Lacquered Interior Door:

WING:

It is 42 mm thick. There is a 6mm thick MDF plate on the front and back of the door leaf.

CASE:

It is 40 mm thick. It is made of MDF and is applied to both sides of the case.

COVER:

It is produced from curved MDF with a thickness of 16 mm and a width of 80 mm.

WINDOW:

EGEPEN DECEUNINCK, PIMAPEN, EUROLINE PVC, Zendow type PVC Window-Door System, Windows with 5 chambers and 70 mm width are used. Heat conduction of the system coefficient (Uf) was determined as 1.4 -1.5 W / m2K as a result of the tests carried out at IFT Rosenheim. determined.

WINDOWS

4+16+4 mm Insulating glass - Transom Window Glasses: 4 mm. Applied as frosted glass. on demand

Comfort or Synergy glass or tiled (slatted) glass applications can be made according to the requirements.

FLY SWIPE Pleated in sliding doors, hinged fly screens are used in other opening windows.

INSTITUTIONAL STRUCTURES

KURUMSAL YAPILAR*

EDUCATIONAL BUILDINGS

EĞİTİM YAPILARI*



T.R. Ministry of Agriculture
and Forestry

Nursery Building

T.C. Tarım ve Orman Bakanlığı Kres Binası*



ANKARA
1800 m²



INSTITUTIONAL STRUCTURES

KURUMSAL YAPILAR*

EDUCATIONAL BUILDINGS

EĞİTİM YAPILARI*



Ibrahim Oktem

Primary School

İbrahim Öktem İlkokulu*

İSTANBUL
750 m²



10

INSTITUTIONAL STRUCTURES

KURUMSAL YAPILAR*

EDUCATIONAL BUILDINGS

EĞİTİM YAPILARI*



Karabük University
Light Steel Roof

Karabük Üniversitesi Hafif Çelik Çatı*



KARABÜK
750 m²



12

INSTITUTIONAL STRUCTURES

KURUMSAL YAPILAR*

OFFICE BUILDINGS

OFİS YAPILARI*



Kartal Sales
Office

Kartal Satış Ofisi*



İSTANBUL
567 m²



13

INSTITUTIONAL STRUCTURES

KURUMSAL YAPILAR*

OFFICE BUILDINGS

OFİS YAPILARI*



+

o



Incek
Sales Office
İncek Satış Ofisi*

ANKARA
150 m²



INSTITUTIONAL STRUCTURES

KURUMSAL YAPILAR*

OFFICE BUILDINGS

OFİS YAPILARI*



Loca Sales

Office

Loca Satış Ofisi*



İSTANBUL
95 m²

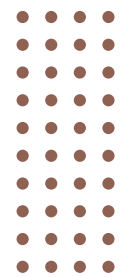


INSTITUTIONAL STRUCTURES

KURUMSAL YAPILAR*

COMMERCIAL BUILDINGS

TİCARİ YAPILAR*



Fethi Paşa
Korusu*



İSTANBUL
210 m²



18

INSTITUTIONAL STRUCTURES

KURUMSAL YAPILAR*

COMMERCIAL BUILDINGS

TİCARİ YAPILAR*



+

○



Auto Gallery

Oto Galeri*



KIBRIS
500 m²



20

INSTITUTIONAL STRUCTURES

KURUMSAL YAPILAR*

HEALTH STRUCTURES

SAĞLIK YAPILARI*



+

○



Ataturk Airport
Prof. Dr. Murat Dilmener
Sahra Hospital
Atatürk Havalimanı Sahra Hastanesi*

İSTANBUL
75.000 m²

INSTITUTIONAL STRUCTURES

KURUMSAL YAPILAR*

HEALTH STRUCTURES

SAĞLIK YAPILARI*



+

o



A.Ş.Ş

Cat Rehabilitation Center

A.Ş.Ş Kedi Rehabilitasyon Merkezi*

ANKARA
715 m²



23

INSTITUTIONAL STRUCTURES

KURUMSAL YAPILAR*

SOCIAL STRUCTURES

SOSYAL YAPILAR*



+

o



Vodafone

Smart Village

Vodafone Akıllı Köy*

AYDIN
537 m²



24

INSTITUTIONAL STRUCTURES

KURUMSAL YAPILAR*

SOCIAL STRUCTURES

SOSYAL YAPILAR*



+

o



Altınpark
Guest House

Altınpark Konuk Evi*



ANKARA
252 m²



25

INSTITUTIONAL STRUCTURES

KURUMSAL YAPILAR*

TOURISM STRUCTURES

TURİZM YAPILARI*



+

○



Fimar Hotel

Fimar Otel*

AMASYA
80 m²



26

INSTITUTIONAL STRUCTURES

KURUMSAL YAPILAR*

TOURISM STRUCTURES

TURİZM YAPILARI*



Assos Hotel

Assos Otel*



ÇANAKKALE
75 m²



27

INSTITUTIONAL STRUCTURES

KURUMSAL YAPILAR*

TOURISM STRUCTURES

TURİZM YAPILARI*



Vanessa Hotel

Vanessa Otel*



AYDIN
178 m²

INSTITUTIONAL STRUCTURES

KURUMSAL YAPILAR*

INDUSTRIAL BUILDINGS

ENDÜSTRİYEL YAPILAR*



+

○



Girışim Electricity

Steel Roof

Girişim Elektrik Çelik Çatı*

INSTITUTIONAL STRUCTURES

KURUMSAL YAPILAR*

INDUSTRIAL BUILDINGS

ENDÜSTRİYEL YAPILAR*



+

○



Yıldızlar Holding

Steel Roof

Yıldızlar Holding Çelik Çatı*

ANKARA
960 m²

INSTITUTIONAL STRUCTURES

KURUMSAL YAPILAR*

INDUSTRIAL BUILDINGS

ENDÜSTRİYEL YAPILAR*



Aydemsan
In-Factory
Office Building
Aydemsan Fabrika İçi Ofis Binası*


ANKARA
350 m²



INSTITUTIONAL STRUCTURES

KURUMSAL YAPILAR*

INDUSTRIAL BUILDINGS

ENDÜSTRİYEL YAPILAR*



Temşan
In-Factory
Office Building

Temşan Fabrika İçi Ofis Binası*

ANKARA
440 m²



32

INSTITUTIONAL STRUCTURES

KURUMSAL YAPILAR*

PUBLIC BUILDINGS

KAMUSAL YAPILAR*



TOKİ

Earthquake Houses

TOKİ Deprem Konutları*



ELAZIĞ

220 PIECES/ADET 90 m²

INSTITUTIONAL STRUCTURES

KURUMSAL YAPILAR*

PUBLIC BUILDINGS

KAMUSAL YAPILAR*



+

o



TOKI

Earthquake Houses

TOKI Deprem Konutları*

ERZURUM
220 PIECES/ADET 90 m²



37

INSTITUTIONAL STRUCTURES

KURUMSAL YAPILAR*

PUBLIC BUILDINGS

KAMUSAL YAPILAR*



Fisherman

State

Balıkçı Hali*



ANKARA
258 m²



39

INSTITUTIONAL STRUCTURES

KURUMSAL YAPILAR*

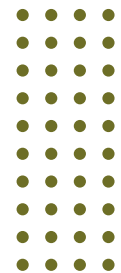
MULTIPLE PROJECTS

ÇOKLU PROJELER*



+

o



Loft Koru*



ANKARA
8 PIECES/ADET 120 m²



INSTITUTIONAL STRUCTURES

KURUMSAL YAPILAR*

MULTIPLE PROJECTS

ÇOKLU PROJELER*



+
○
Asland
Architecture
Asland Mimarlık

İSTANBUL
12 PIECES/ADET 70-80 m²



41

INSTITUTIONAL STRUCTURES

KURUMSAL YAPILAR*

MULTIPLE PROJECTS

ÇOKLU PROJELER*



+

○



"Deep Blue"



İSTANBUL
30 PIECES/ADET 205 m²



43

INDIVIDUAL STRUCTURES

BİREYSEL YAPILAR*

SINGLE STOREY

TEK KATLI*



ANKARA
115 m²



44

INDIVIDUAL STRUCTURES

BİREYSEL YAPILAR*

SINGLE STOREY

TEK KATLI*



ANKARA
184 m²



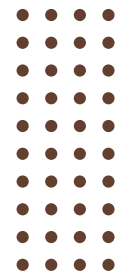
45

INDIVIDUAL STRUCTURES

BİREYSEL YAPILAR*

SINGLE STOREY

TEK KATLI*



ANKARA
90 m²



52

INDIVIDUAL STRUCTURES

BİREYSEL YAPILAR*

TWO STOREY

İKİ KATLI*



ANKARA
169 m²

“

53

INDIVIDUAL STRUCTURES

BİREYSEL YAPILAR*

TWO STOREY

İKİ KATLI*



ANKARA
142 m²

“

54

INDIVIDUAL STRUCTURES

BİREYSEL YAPILAR*

TWO STOREY

İKİ KATLI*



📍
MUĞLA
252 m²



60

INDIVIDUAL STRUCTURES

BİREYSEL YAPILAR*

TWO STOREY

İKİ KATLI*



NEVŞEHİR
142 m²



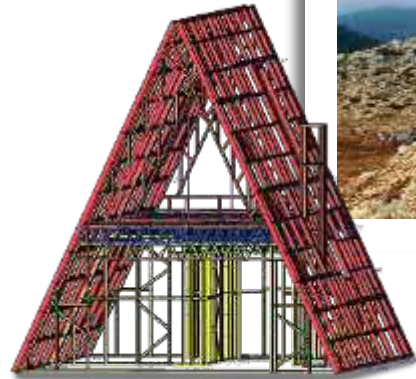
62

INDIVIDUAL STRUCTURES

BİREYSEL YAPILAR*

TRIANGLE HOUSE

ÜÇGEN EV*



TEOCAD*



ANTALYA
142 m²



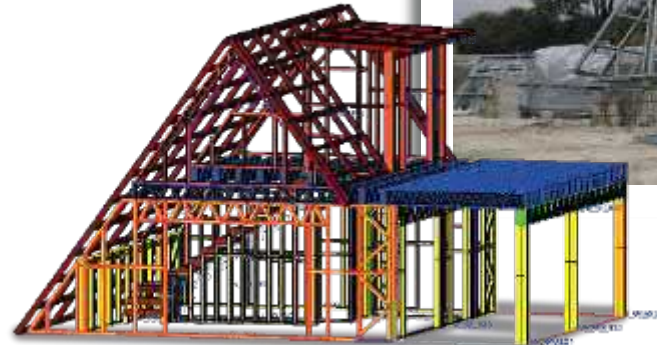
63

INDIVIDUAL STRUCTURES

BİREYSEL YAPILAR*

TRIANGLE HOUSE

ÜÇGEN EV*



TEOCAD*


GAZİANTEP
120 m²



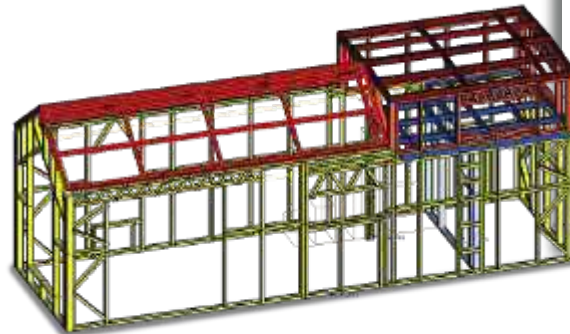


INDIVIDUAL STRUCTURES

BİREYSEL YAPILAR*

TINY HOUSE

TEKERLEKLİ EV*



TEOCAD*



2,5M x 8M



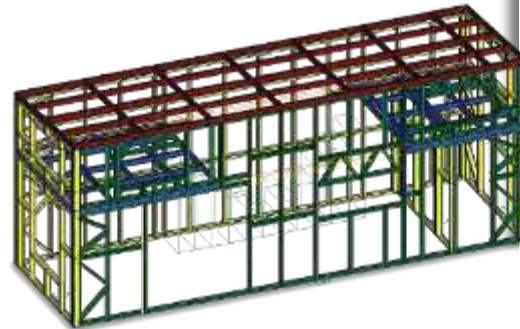
65

INDIVIDUAL STRUCTURES

BİREYSEL YAPILAR*

TINY HOUSE

TEKERLEKLİ EV*



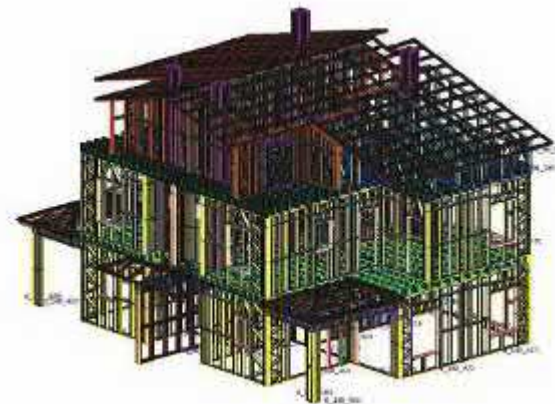
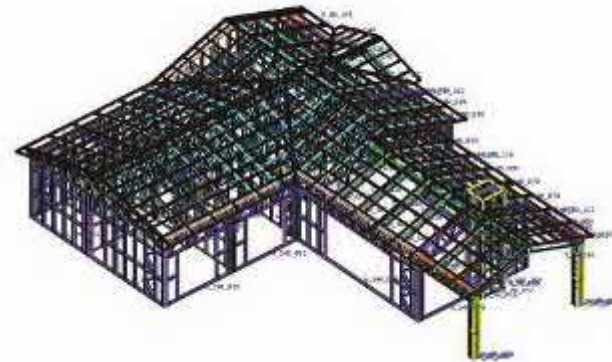
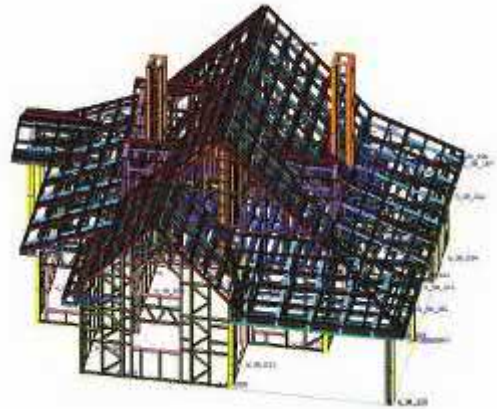
TEOCAD*



2,5M x 8M

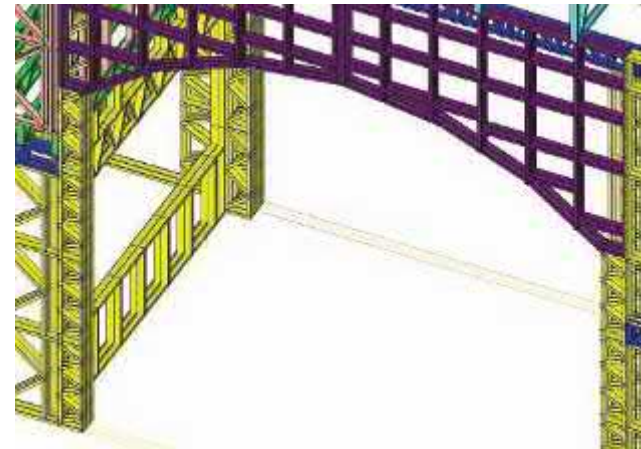
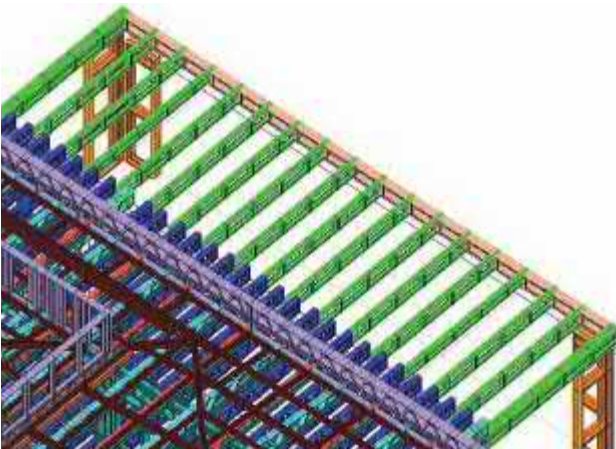
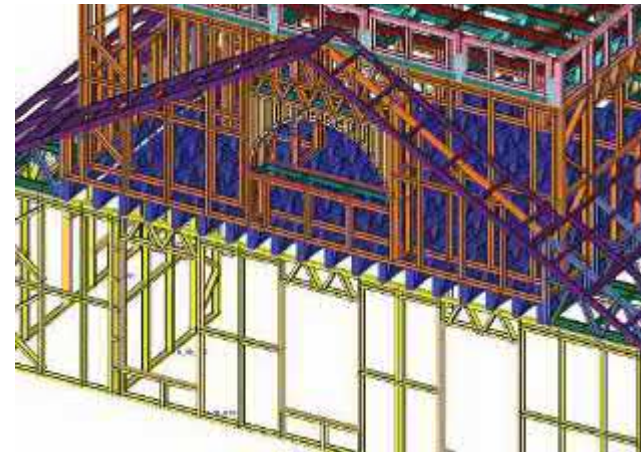
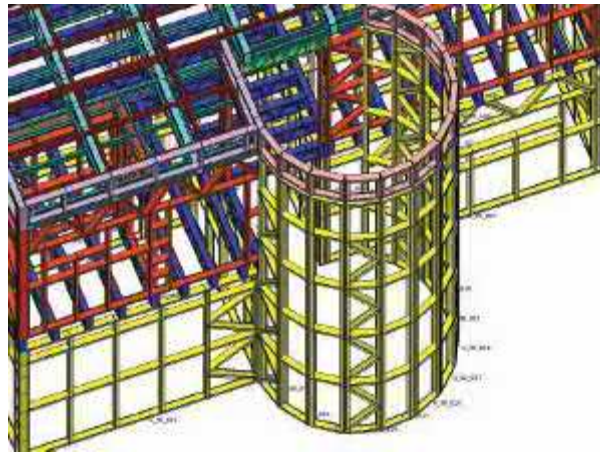


TEOCAD PROGRAM





TEOCAD PROGRAM





70

INTERIOR DETAILS

İÇ DETAYLAR*





INTERIOR DETAILS

İÇ DETAYLAR*





72

INTERIOR DETAILS

İÇ DETAYLAR*





INTERIOR DETAILS

İÇ DETAYLAR*





STEEL IMAGES

ÇELİK GÖRSELLERİ*

74





STEEL IMAGES

ÇELİK GÖRSELLERİ*

75





STEEL IMAGES

ÇELİK GÖRSELLERİ*

76





STEEL IMAGES

ÇELİK GÖRSELLERİ*

77





78

CONSTRUCTION SITE PHOTOS

ŞANTIYE FOTOĞRAFLARI*





79

CONSTRUCTION SITE PHOTOS

ŞANTIYE FOTOĞRAFLARI*





80

CONSTRUCTION SITE PHOTOS

ŞANTIYE FOTOĞRAFLARI*





Power of the Steel
Çeliğin Gücü*

LIGHT STEEL STRUCTURES
HAFİF ÇELİK YAPILAR*