



**SDLG machines** are built to be like the people that own them: hardworking, genuine and reliable. Cost effective, robust machines with fuel efficient engines that are easy to operate and easy to maintain. And when you need parts or service, you can trust your dealership to deliver on the SDLG promise: **Reliability in Action.**



Congratulations SDLG for winning  
**EFQM Global Excellence Award**  
One of the top three quality awards in the world

**Member of the VOLVO Group Since 2007**

SDLG is member of the Volvo Group and one of the largest manufacturers of construction machinery in China, with a wide network of dealerships and service workshops throughout the world.

**Reliability in Action**



**E6215H**  
**Hydraulic Excavator**





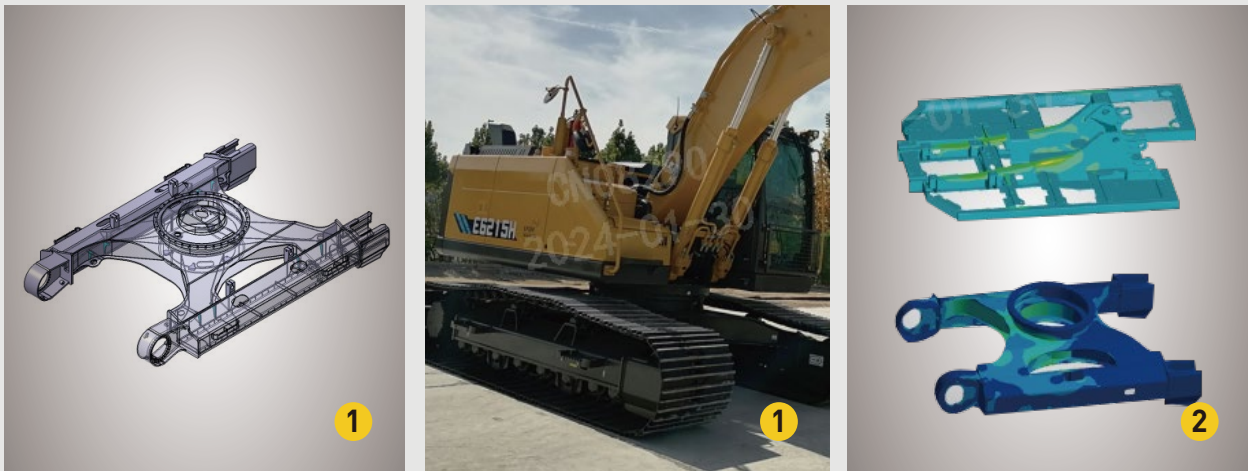
low fuel consumption, high working efficiency

- 1 Cummins high power engine, high pressure common rail technology, high injection pressure, low fuel consumption
- 2 Ten gears engine speed cooperate well with different working condition, auto back to idle speed, saving energy



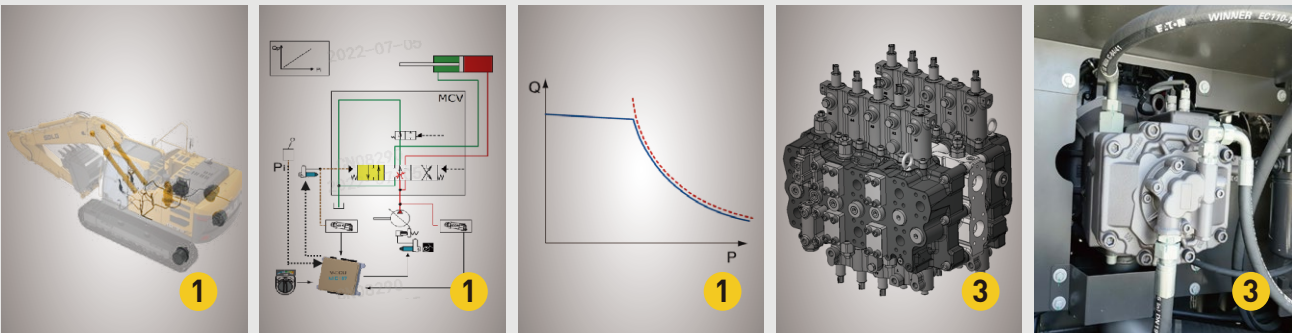
Stable chassis, durable structure

- 1 Chassis lengthening design, 600mm width crawler track, better stability performance, especially in heavy duty work
- 2 The frame optimized through stress bearing analysis,the load-bearing part is reinforced,with large bearing capacity, present a durable product
- 3 The boom and arm are welded with high-strength tensile steel plates, with high strength and low failure rate
- 4 The bottom of the bucket and the easy-to-wear parts on two side are welded with wear-resistant plates to prolong the service life



Advanced technology, higher efficiency

- 1 Adopts the most advanced electro-hydraulic system, perfect power utilization rate among engine and hydraulic system, has higher efficiency,lower fuel consumption and better working performance
- 2 Customized design, a variety of operating modes and working modes are available, adapt to different operating habits and working conditions.
- 3 Large displacement main pump cooperate with large flow main control valve, provide high working efficiency





Safe and comfortable operation environment

- 1
- With ROPS cabin, inside and outside emergency stop switch, rear camera,operation more safe and reliable
- 2
- 8' inch touched LCD display, air suspension seat with heating and ventilation, double integrated keypad, warm-box, wraparound AC ventilating system, provide best operation experience



Convenient maintenance, reduce machine downtime

- 1
- Large open size engine hood for large space, filters all gathered together, convenient to replace
- 2
- Lubrication pipes gathered together, IECU maintenance remind, filter block remind, water in fuel remind, reduce machine downtime



E6215H

Equipment and Features

STANDARD EQUIPMENT	
E6215H	
Engine	
Cummins B4.5 StageV	●
Fuel filler pumps	●
Three-stage filtration of diesel	●
Auto idle system	●
Engine	
X1 function pipes for hammer&shears	●
Quick Connect Lines	●
Electrical/Electronic control system	
Rear and right side camera	●
Travel alarm(with stop switch in the cab)	●
Rear work lights(cab and counterweight)	●
Rotating Warning Light	●
Boom lamp(left side)	●
Spray wiper (2-stage)	●
8-inch touchscreen instrumentation	●
External emergency stop switch	●
In-cab emergency stop switch	●
24V power	●
Cab	
Cigarette lighter	●
Electric double horn	●
Travel motion alarm device	●
Radio with MP3 USB and bluetooth	●
USB & AUX	●
OBD	●
mechanical suspension seat	●
Safety belt	●
Front window sunshade	●
Rear window sunshade	●
Front window tempered glass	●
Evacuation hammer	●
Emergency exit	●
Drink holder	●
Hot & cool box	●
Footrest	●
Automatic climate control	●
Interior cab light	●
storage compartment	●
Skylight	●

Frame	
Cabin top guard (OPG)	●
cab front window upper guard	●
Connecting rod hole	●
Others	
1 cubic metre	●
Silent Crushing Hammer Φ135-AD	●
Scraper	●
Skid-resistant plates and handrails	●
Standard tool kit	●
Dust-proof net of radiator	●
DOC+DPF+SCR	●

OPTIONAL EQUIPMENT	
E6215H	
Hydraulic system	
X1 X3 function pipes for hammer&shears with rotation	○
Quick coupler (with lines)	○
Hydraulic explosion-proof valves	○
Electrical/Electronic control system	
all around cameras	○
Cab front work light×4 (LED)	○
boom light×4 (LED)	○
Cab	
Multi-function handle (with sliding proportional switch)	○
Air suspension seat (With ventilation and heating)	○
ROPS cab	○
Lower cab window front guard	○
Frame	
700/800/900mm shoes	○
Rubber track blocks	○
thumbtack	○
Others	
Automatic lubrication	○
4KG External Fire Extinguisher Holder	○

Standard equipment: ● Optional equipment: ○

# E6215H

## Main Parameter

### ENGINE

	Unit	E6215H
Model	-	B4.5
Type	-	Four-stroke, <b>twincharged</b> , inter-cooled
Rated power	kW@rpm	129
Max. torque	Nm@rpm	780/1500
Displacement	ml	4500
No. of cyliners	-	4
Cylinder bore x stroke	Φ×mm	107×124
Emission	-	stage V/tier4f

### HYDRAULIC SYSTEM

	Unit	E6215H
Hydraulic system type	-	Double pump constant power positive flow control
Main pumps	-	Axial piston pump
Max flow rate	L/min	2×230+18
<b>Relief valve setting</b>		
Implement circuit	bar	340/355
Travel circuit	bar	340/355
Swing circuit	bar	279
Pilot circuit	bar	39

### ELECTRICAL SYSTEM

	Unit	E6215H
System voltage	V	24
Battery voltage	V	24
Battery capacity	Ah	140
Alternator voltege	V	28
Starter voltage	V	24

### DRIVE AND BRAKES

	Unit	E6215H
Drive motors	-	Axial piston motor
Max drawbar pull	kN	200
Max travel speed (low/high)	km/h	3.5/5.7
<b>Service/parking brakes</b>	-	Wet and disc type
Gradeability	°	35

### SWING SYSTEM

	Unit	E6215H
Swing motor	-	Axial piston motor
Swing brake	-	Wet and disc type
Swing speed	r/min	12.1

### UNDERCARRIAGE

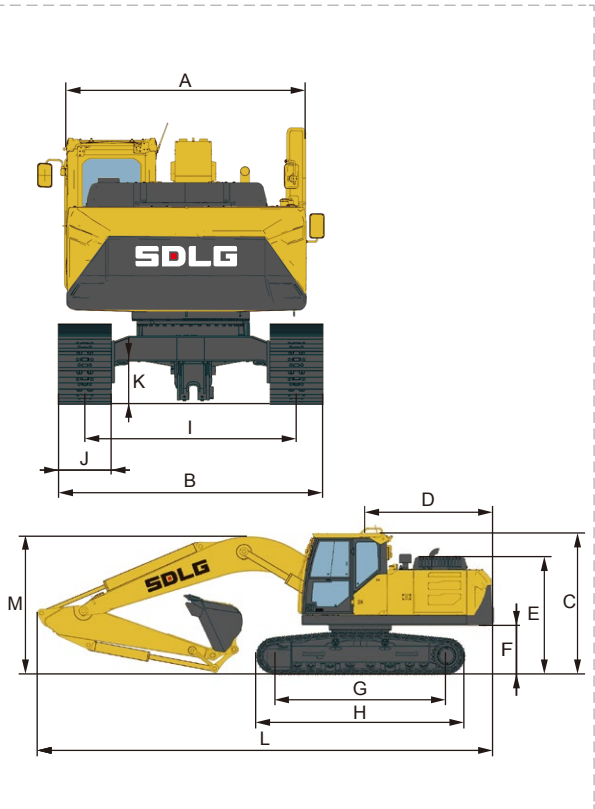
	Unit	E6215H
No. of track shoes	-	49×2
No. of top rollers	-	2×2
No. of bottom rollers	-	2×8
No. of track guards	-	2×2

### SERVICE REFILL CAPACITY

	Unit	E6215H
Fuel tank	L	390
Engine coolant	L	26.5
Engine oil	L	18
Swing drive	L	4
Travel drive	L	5×2
Hydraulic tank	L	110
Hydraulic system	L	220

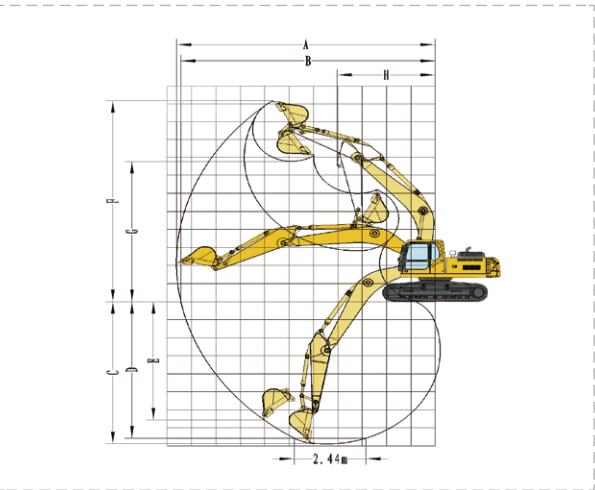
### DIMENSIONS

	Unit	E6215H
Boom length	mm	5700
Arm length	mm	2900
A Overall width of upper assembly	mm	2700
B Overall width	mm	3190
C Overall height	mm	2940
D Tail swing radius	mm	2880
E Overall height of engine hood	mm	2510
F Counterweight clearance	mm	1032
G Wheel base	mm	3660
H Track length	mm	4460
I Track gauge	mm	2390
J Shoe width	mm	600
K Min. ground clearance	mm	460
L Overall length	mm	9720
M Overall height of boom	mm	2940
Bucket capacity	m³	1
Operating weight	kg	21800



### EXCAVATING RANGE

	Unit	E6215H
A Max. digging reach	mm	9940
B Max. digging reach on ground	mm	-
C Max. digging depth	mm	6730
D Max. digging depth (horizontal 2.44 m)	mm	-
E Max. vertical wall digging depth	mm	5830
F Max. cutting height	mm	9450
G Max. dumping height	mm	6650
H Min. front swing radius	mm	3650
Max. excavating force of bucket (ISO)	kN	-
Max. excavating force of arm (ISO)	kN	-



\* The right of final interpretation of the abovementioned parameters shall be reserved by SDLG. No further notice will be given in case of any change, Illustrations in the text may not always be the standard illustrations for this model.