



Automotive Industry Development Centre

Your partner in becoming globally competitive

A subsidiary of the Gauteng Growth and Development Agency



Successful Industrial parks, Special Economic Zones and other Private Public initiatives that have overcome infrastructure and supply chain challenges in the Automotive Sector whilst attracting investments and facilitating a competitive manufacturing and supply chain environment”.

A Case of Automotive Industry Development Centre

Mr Oupa Nkoane
Executive: Industry Development

South Africa Automotive Masterplan (SAAM) Vision 2035

“A globally competitive and transformed industry that actively contributes to the sustainable development of South Africa’s productive economy, creating prosperity for industry stakeholders and broader society”

AIDC's Footprint

Automotive Supplier Park



Gauteng Automotive Learning Centre



Incubation Centre at Ford

Competitiveness Programmes

- Skills Development & Training
- Supplier Development
- Government Incentives Support
- Develop the Township Economy
- Shared Services



Winterveld Automotive Hub



Training Simulator at Ford



Chamdor Automotive Hub



Incubation Centre at Nissan



AIDC's Trade Test Centre

AIDC Priority Supporting Main Thrusts and Projects

Infrastructure to Support Automotive Expansion



- Automotive Supplier Park Establishment and Management
- Automotive Supplier Park Expansion
- Tshwane Automotive City Development
- Silverton Industrial and Retail Park development:

Transformation (Incubators & Township Hubs)



- Automotive Incubator at Ford Production Plant
- Automotive Incubator at Nissan Production Plant
- Establishment of BMW Incubator in development
- Winterveld Automotive Hub
- Chamdor Automotive Hub - Pilot for Mobile Service Units

Skills Development



- AIDC Gauteng Automotive Learning Centre
- AIDC Trade Test Centre
- Fully approved and accredited training service provider
- Skills Programmes and customised solutions
- Bursary Management Programmes (Siemens)

Production Competitiveness Support



- Supplier Productivity Improvement Programmes
- Production Localisation Supporting Initiatives
- DTI Black Industrialists Support Programme / Fund
- Automotive Dis-assembly Hub Feasibility Study
- Industry ad hoc support requests and participation in relevant industry forums

Where are the
Original
Equipment
Manufacturers,
OEMs, Located in
South Africa ?



IVECO

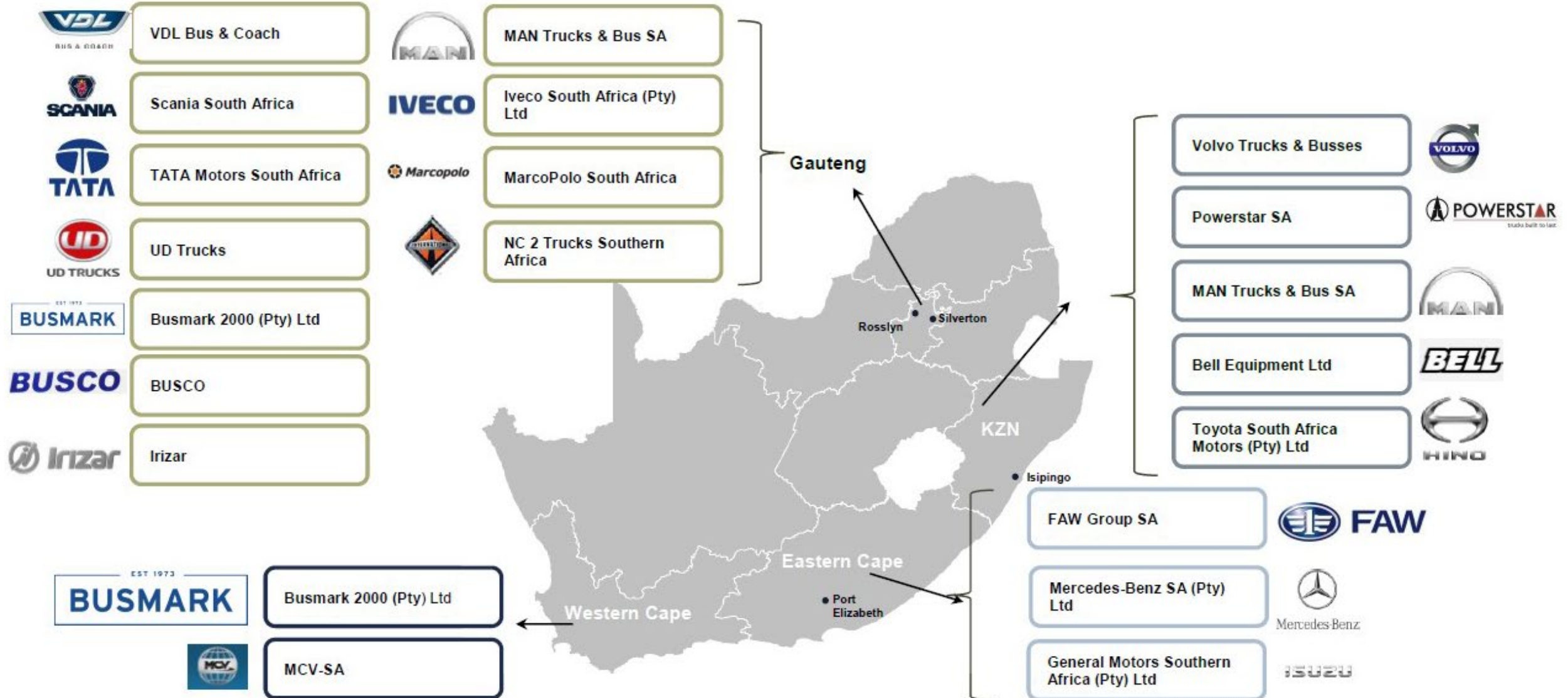


ISUZU



4 Major Automotive Industry Hubs in SA

Bus and Truck Manufacturing



Auto industry contribution to SA GDP

- The Automotive Industry is the largest manufacturing sector in the SA economy and contributed 4,9% of SA GDP.
- Vehicle and component production represents approx 30.1% of SA manufacturing output.
- Projected domestic sales and production, particularly exports, should ensure that the industry's contribution to GDP will continue around to increase in 2021
- Going forward, higher levels of vehicle production should elevate the industry's contribution to SA GDP.

AIDC Supplier Park in Rosslyn

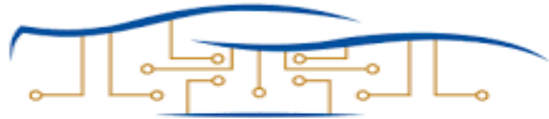


Automotive Supplier Park in Rosslyn

World Class Operations

- 🚗 Strategic location, in proximity to OEMs/Suppliers
- 🚗 Shared infrastructure and facilities
- 🚗 State-of-the-art ICT infrastructure
- 🚗 Shared support services
- 🚗 Central logistics warehouse
- 🚗 World-class production environment
- 🚗 Customised turnkey buildings
- 🚗 Logistics networks
- 🚗 Incubated the Tshwane SEZ
- 🚗 **118 000sq m under roof currently**





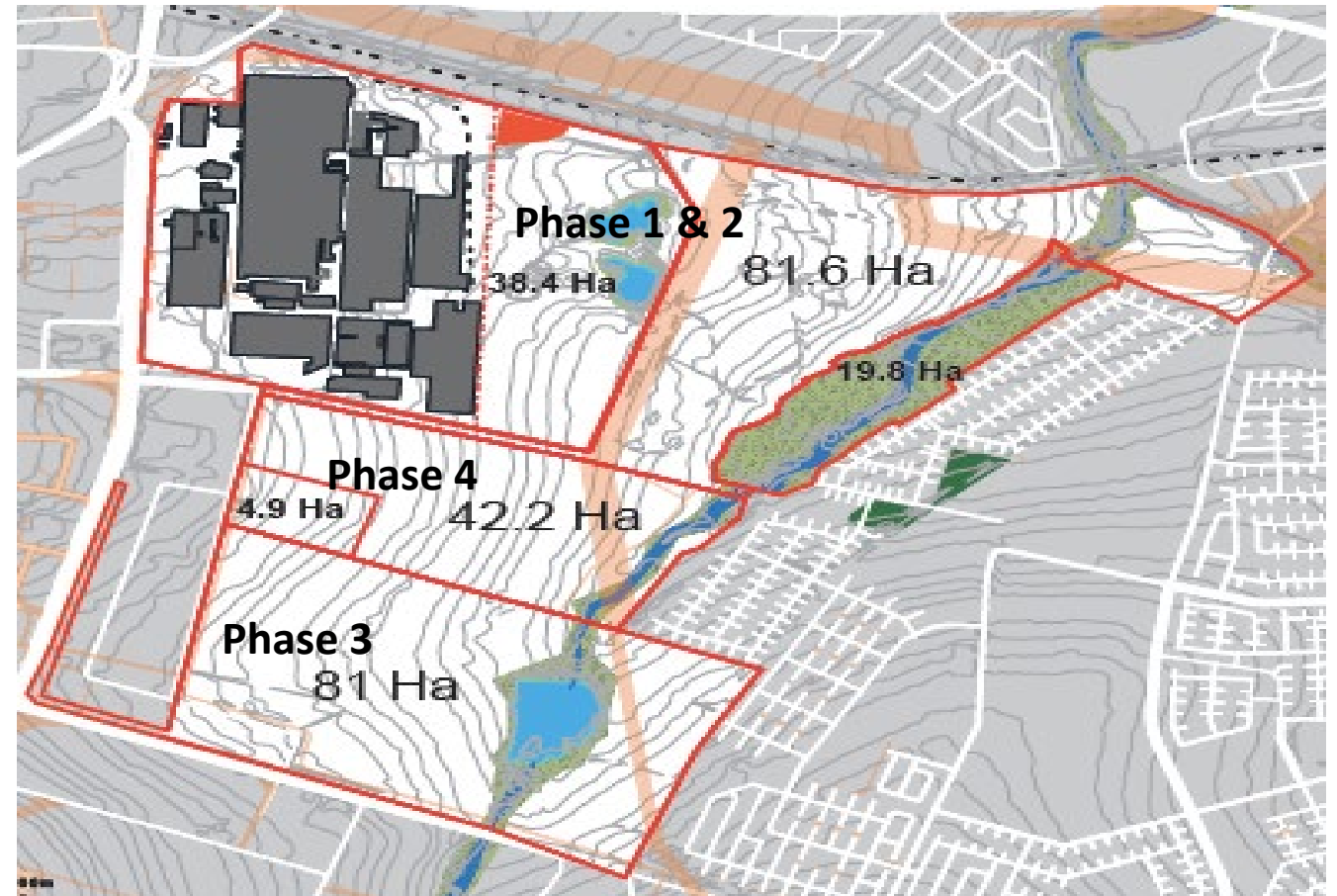
TSHWANE AUTOMOTIVE SPECIAL ECONOMIC ZONE

AFRICA'S FIRST AUTOMOTIVE CITY



The Tshwane Auto Hub Land Area Size

- Tshwane Auto Hub offers fully serviced sites suitable for mixed use.
- The 1st and 2nd phases spans over **81,6 ha***
- This will increase to **162,6 ha** upon completion of the 3rd phase.
- Investment in infrastructure for 20 ha already approved by City of Tshwane (CoT)
- (42,2 ha Private land is available for a 4th Phase if required but is not included).
- Construction of phase one currently ongoing.



SA Automotive Industry Vision and Objectives: 2035

A globally competitive and transformed industry that actively contributes to the sustainable development of South Africa's productive economy, creating prosperity for industry stakeholders and broader society.



1. Grow SA vehicle production to 1% of global output



2. Increase local content in SA assembled vehicles to 60%



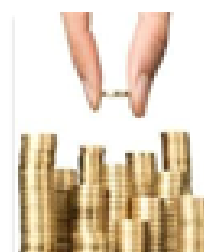
3. Double total employment in the auto value chain



4. Improve auto industry competitiveness levels to that of leading international competitors



5. Transformation of the South African automotive value chain



6. Deepen value addition within SA auto supply chains

Automotive Supplier Park

Automotive component **manufacturers, suppliers** and **service providers** benefit from the synergies and cost saving opportunities created by the locality of the **Automotive Supplier Park**.

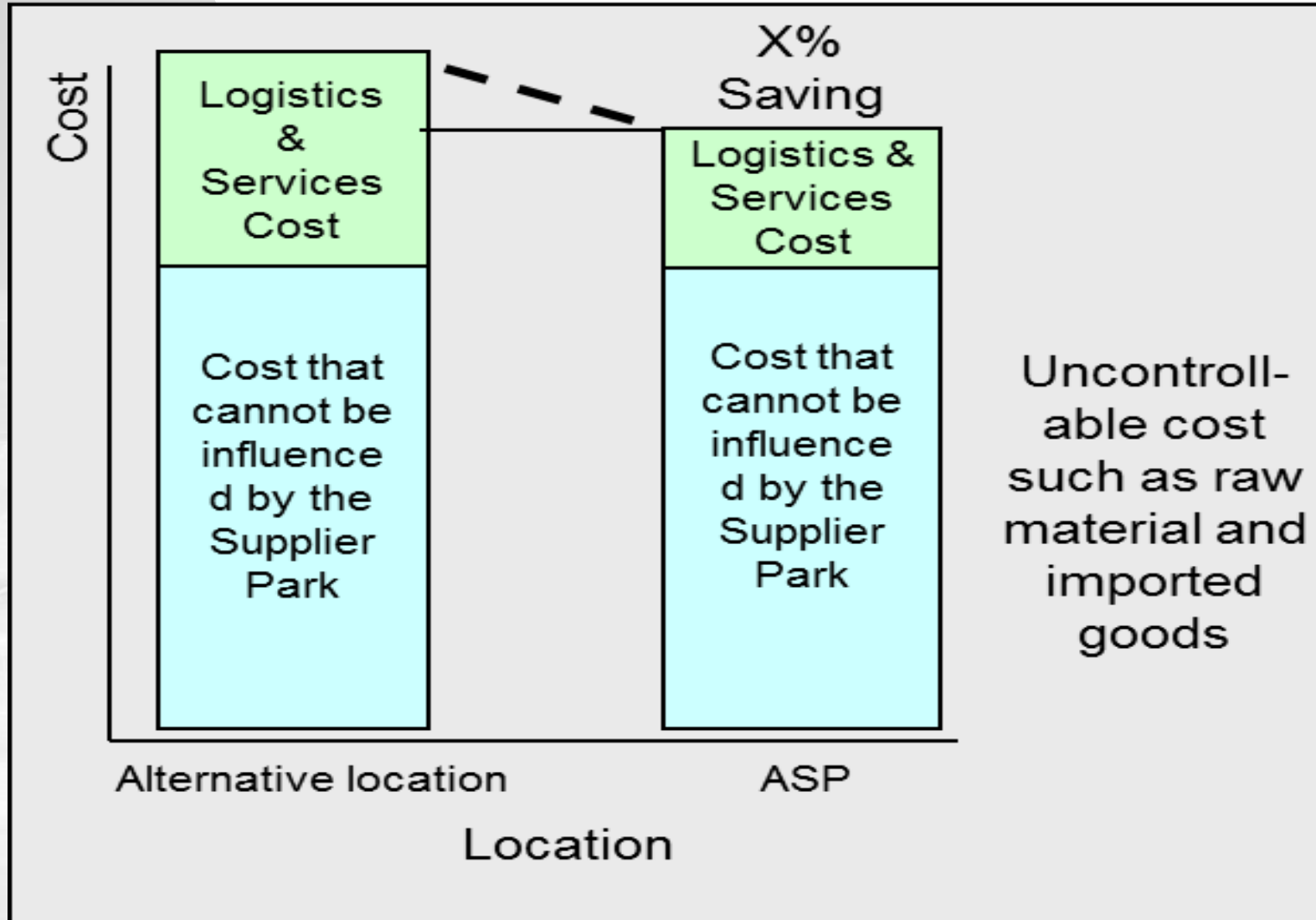
Why Automotive Supplier Park (ASP)

- Modelled on leading supplier parks in Europe, Japan and America, the ASP concentrates automotive component supplier and service providers in one location to achieve cost benefits through:

- 🚗 **Proximity to multiple assembly plants**
- 🚗 **Common infrastructure and facilities**
- 🚗 **Business support services**
- 🚗 **JIT operation support**



Why Automotive Supplier Park



Why Automotive Supplier Park



World Class Operations

- 🚗 Strategic location, proximity to vehicle manufactures
- 🚗 Shared infrastructure and facilities
- 🚗 State-of-the-art ICT infrastructure
- 🚗 Shared support services
- 🚗 Central logistics warehouse
- 🚗 World-class production environment
- 🚗 Customised turnkey buildings
- 🚗 Logistics networks



Automotive Supplier Park - Shared Services Model

FACILITIES & SERVICES

- Central Office Hub for service providers
- 4-star graded Conference Centre
- Central Canteen & Coffee Shop
- Central Clinic
- ATM facilities

ICT

- Shared funding and resourcing
- Fibre Link to all buildings
- Business continuity & disaster recovery
- Modular design to allow “slot in”



Automotive Supplier Park – Tenants Examples

There are about 15 tenants in the Park

Example:

- **MSSL: Manufactures rear and front bumpers for FORD**
- **Yanfeng: Manufactures leather seats**
- **Faurecia: Manufactures cockpits and dashboard**
- **Edient: Manufactures seats**
- **DSV: Operating the logistics.**



Automotive Supplier Park Value Offering

Value Proposition

Location

Property Management

Shared Services

Logistics Optimisation



Automotive Supplier Park – Aerial View



Automotive Current strategic projects

- Expansion of the Industrial Park
- Energy efficient industrial park and reducing the carbon footprint
- Towards the evolution of Electric vehicles
- Inland port for logistics efficiencies and efficient shipping and clearance with strategic partners: Transnet
- Rosslyn central business improvement district for efficient urban management in partnership with City of Tshwane
- Facilitate the implement the Rosslyn Urban Development Master plan which includes new roads, hospital, schools, new low to high density development, recreational areas, hotel and retail centres.

Automotive Supplier Park Development Phases



Thank you



Contact Us



Automotive Industry Development Centre
Your partner in becoming globally competitive
A subsidiary of the Gauteng Growth and Development Agency



012 564 5001



info@aidc.co.za



www.aidc.co.za



30 Helium Road
Automotive Supplier Park
Rosslyn EXT 2
0200

www.aidc.co.za

