



Intro to Piano

Ages 5+



LEARN FUN SONGS LIKE ESPRESSO
BY SABRINA CARPENTER AND
STARSHIPS BY NICKI MINAJ





Table of Contents

MARY HAD A LITTLE LAMB

- (TRY IT WITH YOUR RIGHT HAND FIRST, THEN TRY IT WITH YOUR LEFT HAND!)

POOR UNFORTUNATE SOULS

- (PLAY WITH BOTH HANDS! _ MEANS LOWER NOTE, LEFT HAND USED, IN BASS!)

ESPRESSO

- (NEW HAND POSITION! BOTH THUMBS ON TREBLE G)

YOU'VE GOT A FRIEND IN ME

- (BOTH THUMBS ON TREBLE G, INTRODUCING A SHARP (#))

GIRL ON FIRE

YOU ARE MY SUNSHINE

- (INTRODUCING A FLAT ())

THIS LITTLE LIGHT OF MINE

- (THE SHARP (#) AT THE BEGINNING OF EACH LINE ON LINE F MEANS ALL F'S WILL BE F#)

SEPTEMBER

- (NEW HAND POSITION, NOTES ABOVE TREBLE CLEF!)

Bonus songs!



STARSHIPS

GRAVITY FALLS MAIN THEME

YESTERDAY



Mary Had A Little Lamb

**Try it with your right hand first, then try it with your left hand!*

RH: F1 on Middle C

LH: F1 on Treble G

Mary had a little lamb

E D C D E E E

Little lamb, little lamb

D D D E E E

Mary had a little lamb

E D C D E E E

Its fleece was white as snow

E D D E D C



Sunny Shores
ACADEMY

Poor Unfortunate Souls

LH: Finger 1 bass B RH: Finger 1 middle C
***Play With Both Hands! *___ Means lower note, Left Hand used, in bass!**

C D EEEE F E D F E C

I admit that in the past I've been a nasty

CCDEEEE F

They weren't kidding when they called

E D C D

me, well, a witch

B C DDDD B

But you'll find that nowadays

B DDDD B

I've mended all my ways

B CCCC DD C D E E

Repented, seen the light, and made a switch True? Yes

C D E E E E F E D F E C

And I fortunately know a little magic

CC D EEEEE F E D C D

It's a talent that I always have possessed

B C DDDD B

And here lately, please don't laugh

B C DDDD B

I use it on behalf

A B CCCC DD C D E

Of the miserable, lonely, and depressed,
pathetic

C B D C B C

Poor unfortunate souls

E B E A

In pain, in need

EE FFFF EE

This one longing to be thinner

EE AAAA EEEE

That one wants to get the girl

BB

And do I help them?

C A B

Yes, indeed

C B D C B C

Those poor unfortunate souls

E B E A

So sad, so true

EE FFFF EEEE

They come flocking to my cauldron

AA C B A BB

Crying, "Spells, Ursula, please!"

EA

And I help them, Yes, I do



Sunny Shores
ACADEMY

Espresso - Sabrina Carpenter

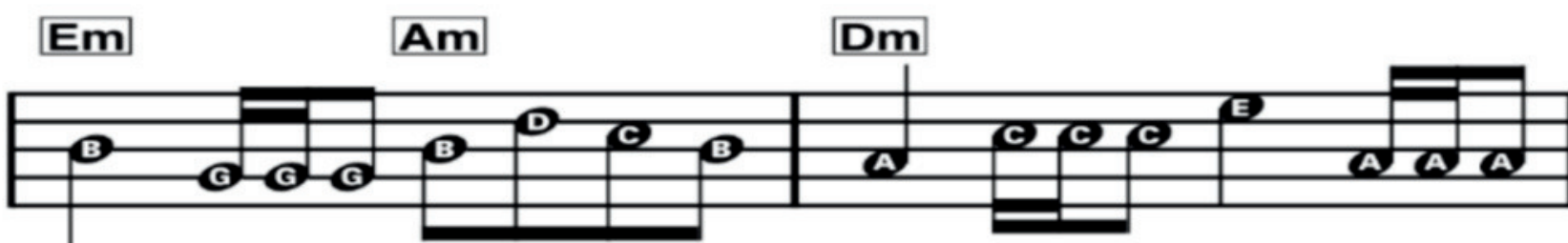
** New Hand Position! Both thumbs on Treble G*

LH: F5 on middle C

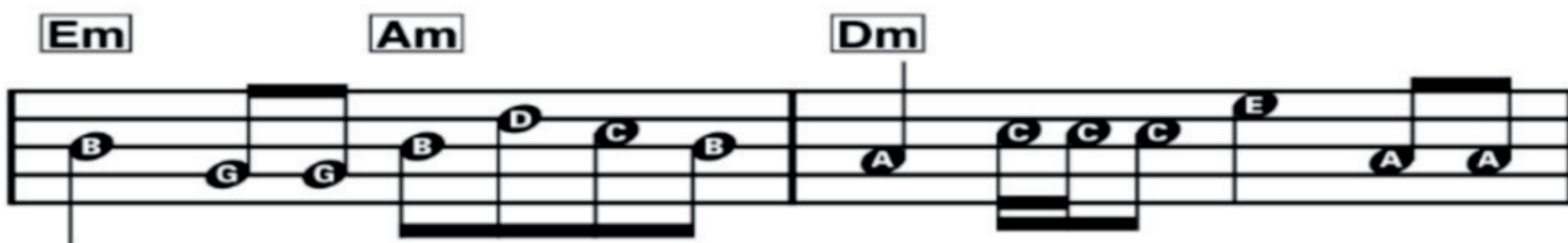
RH: F1 on treble G



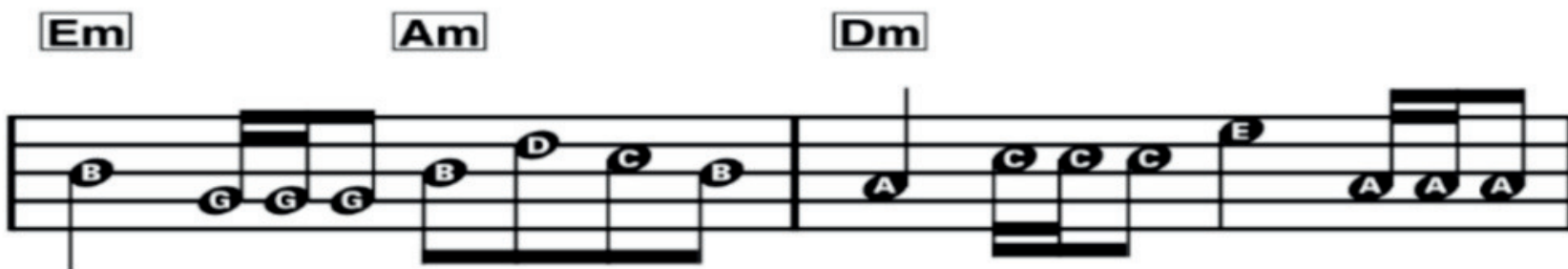
Now he's _____ think - in' 'bout me ev - 'ry night,



oh, is it that sweet? I guess so. _____ Say you can't sleep? Ba - by, I



know: that's that me es - pres - so. _____ Move it up, down, left, right,



oh, switch it up like Nin - ten - do. _____ Say you can't sleep, ba - by, I

B G G B D C B A

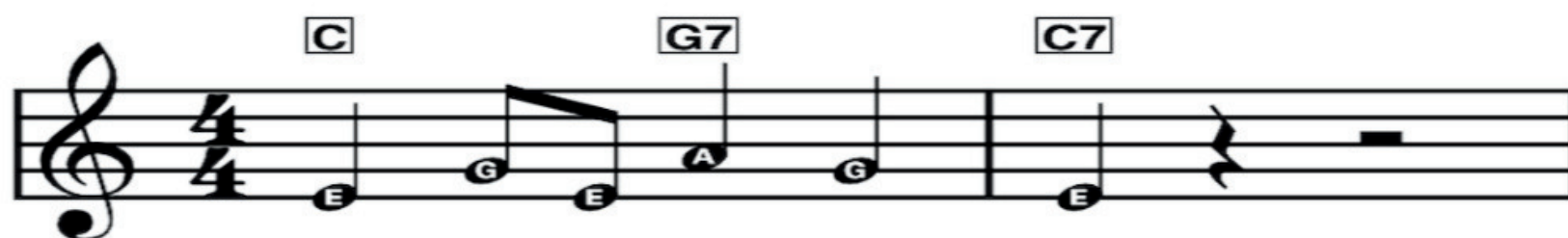


Sunny Shores
ACADEMY

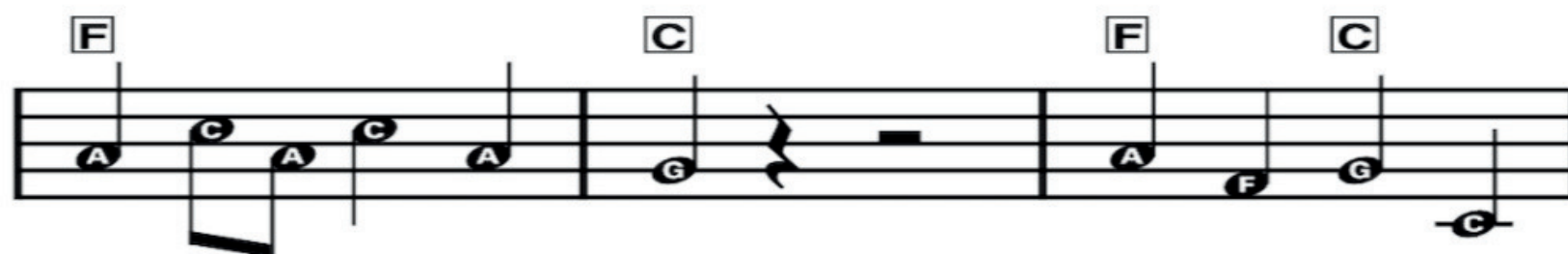
You've Got A Friend In Me

LH: F5 on Middle C
*Both thumbs on Treble G

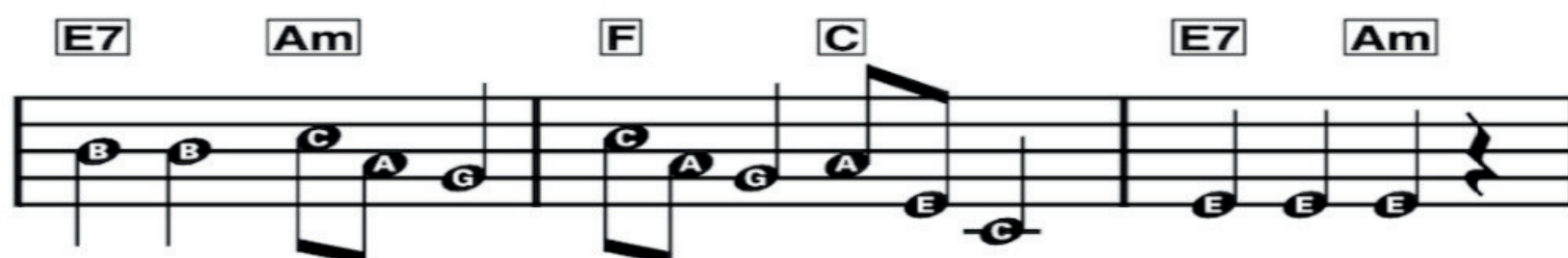
RH: F1 on Treble G
*Introducing a Sharp (#)



You've got a friend in me.
You've got a friend in me.



You've got a friend in me. When the road looks like you got troubles, then
You've got a friend in me. You got troubles, then



rough a head and you're miles and miles from your nice warm bed,
I got 'em too. There is - n't an - y - thing I would - n't do for you.



you just re - mem - ber what your old pal said. Son,
If we stick to - geth - er we can see it through, 'cause

C A G E E C



Girl on Fire

LH: F5 on Middle C
*LH F2 on F#

RH: F1 on Treble G

Pre-Chorus

G F#G F# E

Oh-oh,

G G G G A B E D

she got both feet on the ground

G G G G A B E D

And she's burnin' it down

D E G A

G F# G F# E

Oh-oh

G G G G A B E D

she got her head in the clouds

G G G G A B E D

And she's not backin' down

Chorus

B B A G B B

This girl is on fire

B B A G A A

This girl is on fire

B B A G B B

She's walkin' on fire

B B A G A A

This girl is on fire

(fast) **G F# E D E F# G**



Sunny Shores
ACADEMY

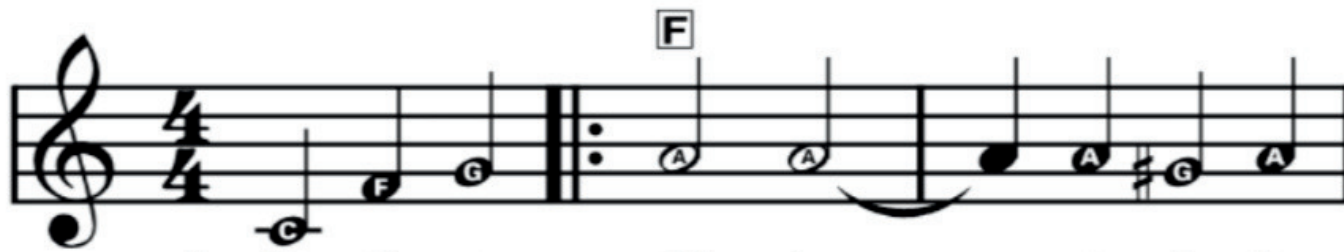
You Are My Sunshine

LH: F5 on Middle C

RH: F1 on Treble G

*Introducing a Flat (b)

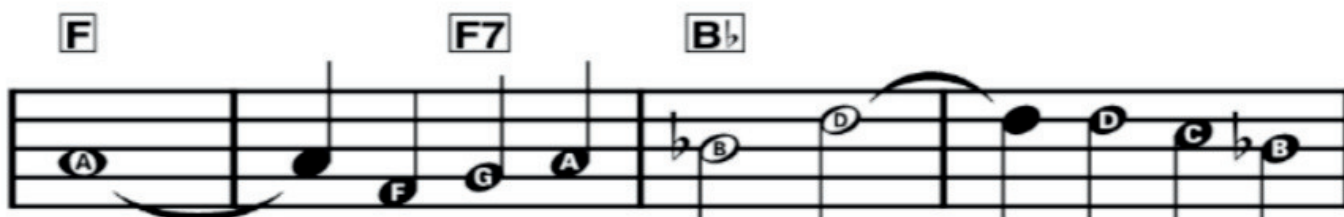
*RH: F3 on B \flat



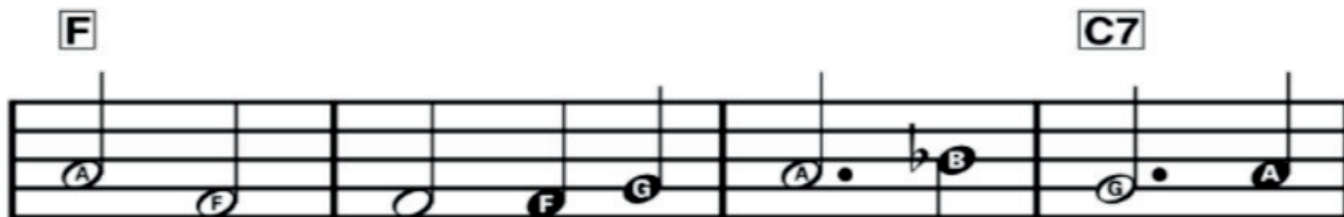
1. The oth - er night, dear, _____ as I lay
(2.) love you _____ and make you
(3.) once, dear, _____ you real - ly



sleep - ing, _____ I dreamed I held you _____ in my
hap - py _____ if you will on - ly _____ say the
loved me _____ and no one else could _____ come be -



arms. _____ When I a - woke, dear, _____ I was mis -
same. _____ But if you leave me _____ to love an -
tween. _____ But now you've left me _____ and love an -



tak - en _____ and I hung my head and



cried. _____
day. _____
dreams. _____



Sunny Shores
ACADEMY

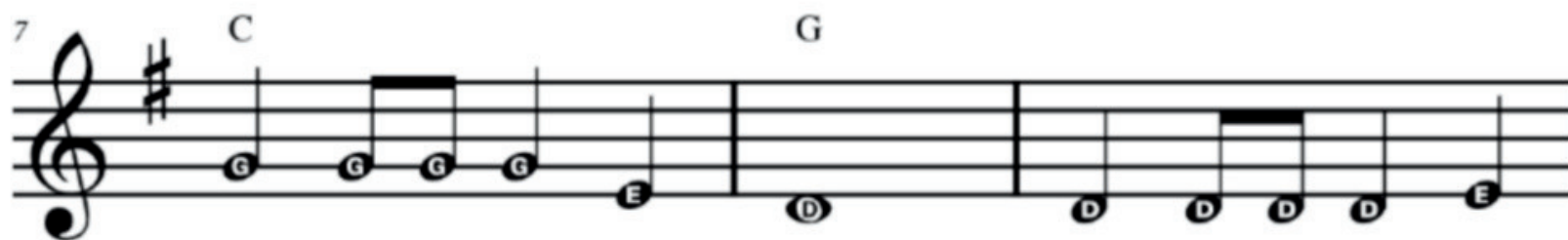
This Little Light of Mine

LH: Finger 1 treble G

RH: Finger 5 middle C

*The sharp (#) at the beginning of each line on line F means all F's will be F#

♩ = 118



B B B A B A G



September - Earth Wind and Fire

LH: Finger 1 high treble D RH: Finger 5 treble C

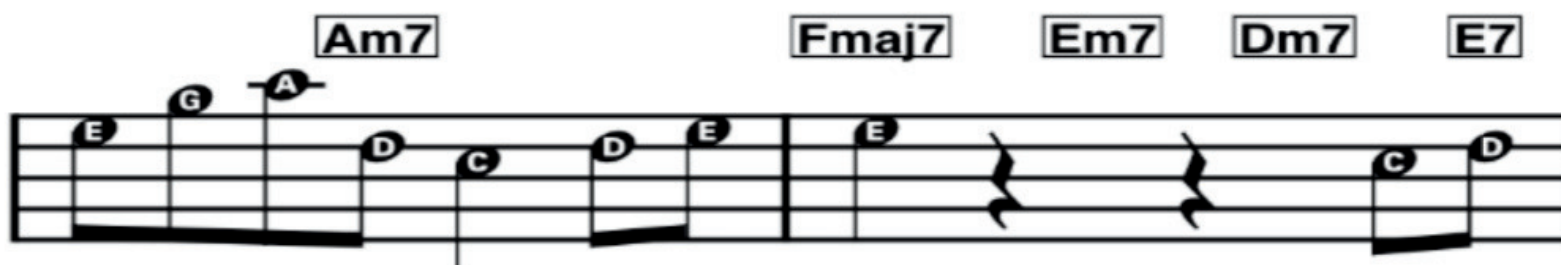
*New hand position, notes above treble cleff!



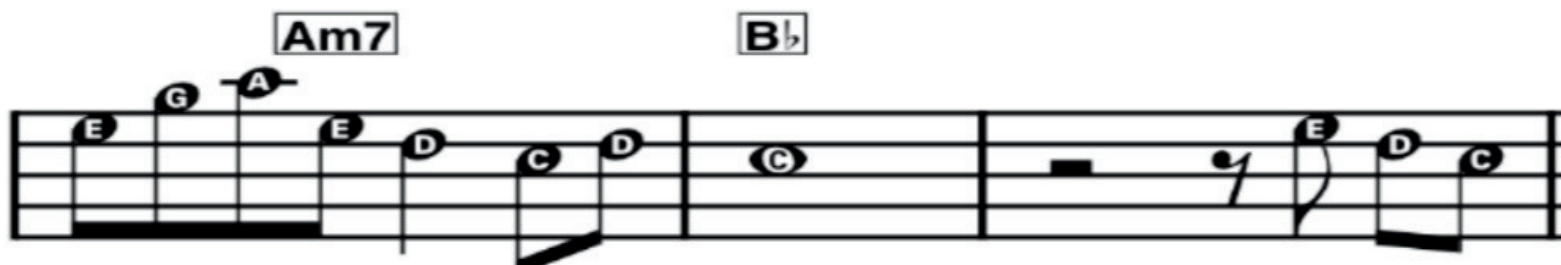
1. Do you re - mem - ber the
(2.) with you, hold - ing



twen - ty - first night ____ of Sep - tem - ber? Love was
hands with your heart, ____ to see you, on - ly



chang - ing the minds ____ so ten - der while ____
blue talk and love. ____ Re - mem - ber how we



chas - ing the clouds ____ a - way. ____ Our hearts are
knew love was here ____ to stay? ____ Now De -



Starships - Nicki Minaj

**This is a fun one! See if you can do it by yourself. All notes are in treble clef, except B*

F# F# F# A A B F# E D B

F# F# D E E E F# E D

F# F# F# A A B F# E D B

F# F# F# E E D

B D E F#



Gravity Falls (Main Theme)

Sheet music for the Gravity Falls Main Theme, written in 4/4 time and B-flat major. The music is presented in six staves, with measure numbers 1, 3, 5, 8, 11, and 14 indicated at the beginning of each staff. Chord symbols are provided above the notes.

Staff 1 (Measures 1-2): Chords: Dm, F. Notes: F4, D4, A3, D4, F4, D4, A3, D4.

Staff 2 (Measures 3-4): Chord: A. Notes: E4, C#4, A3, C4, E4, C4, A3, C4.

Staff 3 (Measures 5-6): Chords: Dm, F. Notes: D4, E4, F4, A4, G4, A4.

Staff 4 (Measures 8-9): Chord: Bb. Notes: C4, D4, E4, F4, E4.

Staff 5 (Measures 11-12): Chords: C, A, Dm. Notes: G4, A4, G4, F4, F4, F4.

Staff 6 (Measures 14-15): Chords: C, F. Notes: A4, A4, G4, F4, A4, A4, A4.



Sunny Shores
ACADEMY

Yesterday - The Beatles

F **Em** **A7**

Yes - ter - day,
Sud - den - ly,

all my trou - bles seemed so
I'm not half the man I

Dm **Bb** **C**

far a - way, _____
used to be, _____

now it looks as though they're
there's a shad - ow hang - ing

Bb **F** **G** **Dm7** **G7** **Bb** **F**

here to stay, _____ oh I be - lieve _____ in Yes - ter - day. _____
o - ver me, _____ oh Yes - ter - day _____ came sud - den - ly. _____

G **A7** **Dm** **C** **Bbmaj7** **Dm**

Why she had to go I don't

Gm **C7** **F** **G** **A7**

know, she would - n't say. _____ I said