



SHERIF & ALI

THE 2025 COLLECTION



01.

EVBUILD

02.

INTERIOR & FURNISHINGS

03.

MODEL HOMES

04.

SUNDELL HOUSE

05.

NOOR HOUSE

06.

LUMIÈRE HOUSE

07.

LEVITIA HOUSE

08.

NIRVANA HOUSE

09.

AURORA HOUSE

10.

ELYSIUM HOUSE

11.

SALES TEAM

12.

THE SHERIF & ALI GROUP

ABOUT EVBUILD

EVBUILD, founded by Vahid Mashkoufi, is a premier architectural and construction firm based in McLean, Virginia, known for its commitment to excellence, innovation, and sustainability. Specializing in both high-end residential homes and dynamic commercial spaces, EVBUILD brings a unique vision to every project, blending luxury with functionality. The firm has garnered a reputation for its meticulous attention to detail, crafting bespoke designs that reflect the personal tastes and values of their clients while integrating cutting-edge technology and smart building solutions.

At the core of EVBUILD'S philosophy is a dedication to sustainability. Their projects are designed with energy efficiency and eco-friendly practices in mind, ensuring that each space not only enhances the lives of its occupants but also reduces its environmental impact. Whether it's creating luxurious private estates or designing forward-thinking commercial environments, EVBUILD incorporates the latest trends in smart home technology and modern architectural design.

What sets EVBUILD apart is their collaborative approach. The firm works closely with clients to understand their needs and aspirations, offering customized solutions that go beyond typical design and construction expectations. Their track record of delivering complex projects on time and within budget has solidified their position as a trusted partner in the architecture and construction industries. From initial design to project completion, EVBUILD ensures that every detail is executed with precision, resulting in spaces that truly stand out.



"If you dream it, I can build it"

-Vahid Mashkoufi

saloni
art of furniture



THE ART OF FURNITURE

We're Emre & Şirinnur, the creative duo behind Saloni Furniture, where design meets craftsmanship. With European-inspired aesthetics and a passion for bespoke interiors, we bring your vision to life with custom, made-to-measure furniture designed to fit your home's unique character. Looking for more than just furniture? We create fully personalized spaces, turning your home into a masterpiece of elegance and functionality. From hand-selected materials to tailored designs, every detail is crafted with precision. Whether you're furnishing a new home or transforming your current space, let's bring your dream design to reality!

-Emre & Şirinnur



MODEL HOMES



SUNDELL HOUSE

6 Bedrooms | 9 Bathrooms | 12,000± SqFt
Base Price | \$3,600,000



NOOR HOUSE

6 Bedrooms | 8 Bathrooms | 9,400± SqFt
Base Price | \$3,300,000



LUMIÈRE HOUSE

6 Bedrooms | 9 Bathrooms | 8,000± SqFt
Base Price | \$2,800,000



LEVITIA HOUSE

6 Bedrooms | 9 Bathrooms | 7,500± SqFt
Base Price | \$2,400,000



NIRVANA HOUSE

5 Bedrooms | 8 Bathrooms | 7,500± SqFt
Base Price | \$2,200,000



AURORA HOUSE

5 Bedrooms | 8 Bathrooms | 7,500± SqFt
Base Price | \$2,200,000



ELYSIUM HOUSE

5 Bedrooms | 8 Bathrooms | 7,800± SqFt
Base Price | \$2,000,000



LUMI HOUSE

5 Bedrooms | 6 Bathrooms | 7,500± SqFt
Base Price | \$1,650,000



A modern two-story house with a light blue-grey exterior and a dark grey shingled roof. The house features large, multi-paned windows and a covered front entrance with a dark frame. The interior lights are on, and the house is surrounded by a well-manicured lawn and some shrubbery. The sky is a deep blue, suggesting dusk or dawn. The text "SUNDELL HOUSE" is overlaid in a large, white, serif font across the center of the image.

SUNDELL HOUSE

SUNDELL HOUSE

Sundell House is a breathtaking Modern Tudor home that seamlessly blends timeless architectural charm with contemporary design. Offering the perfect balance of classic Tudor appeal and modern functionality, this home radiates sophistication, warmth, and luxury.

The exterior of Sundell House is a true masterpiece, with steeply pitched roofs, traditional Tudor elements, and expansive contemporary windows that flood the home with natural light while preserving its architectural integrity.

The open floor plan is perfect for entertaining and family living, while the grand two-story foyer makes a dramatic first impression. The chef's kitchen, equipped with state-of-the-art appliances, custom cabinetry, and a large island, is a true highlight. Sundell House also features a 4-car garage, spice kitchen, elevator, steam shower, sauna, gym, and wet bar, plus European-style modern windows, doors, and custom cabinetry throughout.

Designed to embrace natural light, Sundell House lives up to its name, with floor-to-ceiling windows and glass doors that create a bright and serene atmosphere. The seamless connection between the indoor spaces and lush outdoor surroundings fosters a tranquil ambiance.

The outdoor living space is a luxurious retreat, with optional upgrades including a swimming pool, outdoor kitchen, sports court, fire pit, and entertainment audio/video systems. Whether you're relaxing or entertaining, Sundell House offers the ultimate in modern living.



THE DETAILS

PROPERTY INFORMATION

Finished (SqFt) 12,000±

BEDROOMS + BATHROOMS

6 Bedrooms

9 Bathrooms

INTERIOR FEATURES

Grand two-story foyer

Chef's kitchen with state-of-the-art appliances

Elevator

Steam shower & Sauna

Gym

Wet bar

Floor-to-ceiling windows & glass doors

EXTERIOR FEATURES

Steeply pitched Tudor-style roof

Expansive contemporary windows

4-car garage

Optional outdoor living features: Swimming pool,

Hardscaping & landscaping, Sports court, Outdoor kitchen, Firepit, Automatic screens, Outdoor lighting

SYSTEMS

Advanced smart home technology throughout

Entertainment audio/video systems

Modern European-style windows and doors for energy efficiency



SECOND FLOOR



BASEMENT



FIRST FLOOR



NOOR HOUSE

NOOR HOUSE

Noor House is a striking contemporary estate that redefines luxury living with its seamless blend of innovation, sophistication, and comfort. Spanning over 7,500± square feet, this architectural beauty offers a masterful balance of modern elegance and suburban serenity.

Designed for those who appreciate both style and functionality, the home features five opulent bedrooms, eight spa-inspired bathrooms, and a spacious 3 car garage. The main level is a showcase of contemporary design, boasting a state-of-the-art kitchen, expansive dining, and a catering pantry.

Upstairs, the private owner's suite impresses with separate his-and-hers closets, while 3 additional bedrooms provide ample comfort. The lower level is a personal retreat, offering a recreation room, wine cellar, and an optional gym or theater, plus an additional bedroom for guests.

Exquisite design elements define Noor House, from European Modern Windows that bathe the interiors in natural light to a dramatic pivot door and sleek stucco siding with LED accent lighting. Inside, wide-plank engineered flooring, custom built-ins, and European cabinetry set a tone of understated luxury.

For those seeking the ultimate in personalization, optional upgrades include a swimming pool, full-home automation, high-end audio/video systems, and even a fully furnished interior. More than just a home, Noor House is a sanctuary where cutting-edge technology meets timeless design, crafted to elevate your lifestyle in every way.



THE DETAILS

PROPERTY INFORMATION

Finished (SqFt) 7,500±

BEDROOMS + BATHROOMS

5 Bedrooms

8 Bathrooms

INTERIOR FEATURES

Wide-plank engineered flooring

Multiple modern gas fireplaces

Floating stairs with glass railings

2-story foyer

Recreation room, optional gym or theater, and wine cellar

Custom dry sauna and steam shower

Exercise room

EXTERIOR FEATURES

European Modern Windows

10-foot pivot door

LED strip lighting

3-car garage

Optional swimming pool

SYSTEMS

Optional full house automation

Advanced audio and video systems

Optional elevator

High-efficiency HVAC and utility systems

Smart home technology integration



BASEMENT PLAN



FIRST FLOOR PLAN



SECOND FLOOR PLAN

A modern, two-story house with a minimalist design, featuring large windows and a concrete exterior. The house is set against a backdrop of trees and a clear sky. The interior lights are on, and the exterior is illuminated by warm, ambient lighting. The house has a flat roof and a series of concrete steps leading up to the entrance. The text "LUMIÈRE HOUSE" is overlaid in a large, white, serif font across the center of the image. The house number "5619" is visible on the right side of the entrance.

LUMIÈRE HOUSE

LUMIÈRE HOUSE

Lumière House is poised to redefine the epitome of contemporary luxury. Brought to life by EVBUILD, Northern Virginia's esteemed homebuilder, Lumière House promises an unparalleled blend of cutting-edge design and refined elegance.

Lumière House sprawls across 8,000± square feet of meticulously arranged living space. It features six opulent bedrooms, nine lavish bathrooms, and a generous 3 car garage, each space meticulously curated to fuse aesthetic allure with utmost functionality. The residence also offers the convenience of an optional elevator, catering to every facet of modern accessibility.

Lumière House isn't merely a residence; it embodies a lifestyle of grandeur. Its expansive blueprint boasts an open-concept living area, crafted for an effortless transition between daily activities and hosting gatherings. At the heart of this home lies a chef's dream kitchen, expansive dining and family rooms, and a supplementary catering pantry, perfect for those who live to entertain.

To enhance this already exceptional living experience, prospective homeowners can select from a range of bespoke upgrades. Options include a stunning swimming pool, a comprehensive full-house automation system for state-of-the-art environmental control, top-tier audio and video installations, or a completely furnished home, customized to your unique taste. Every element of Lumière House has been conceived with a focus on luxury and practicality, ensuring it stands as a singular beacon of modern living.



THE DETAILS

PROPERTY INFORMATION

Finished (SqFt) 8000±

BEDROOMS + BATHROOMS

6 Bedrooms

9 Bathrooms

INTERIOR FEATURES

3 Floors

Engineered wood I-joist floor system

Floating Wood Staircase

Walk-In Closets

Fireplace

Smart Lighting

EXTERIOR FEATURES

3 Car Garage

16' Aluminum Pivot Front Door

Professional Landscaping

European Modern Windows

SYSTEMS

Full Featured Intercom with Touch Pads

Whole House Multi-Zone Audio System

200-amp electrical service

LED Lighting along Staircase

High Efficiency Multi System, Multi Zone Gas

Furnace, HVAC Systems

SECOND FLOOR



FIRST FLOOR



BASEMENT



LEVITIA HOUSE



LEVITIA HOUSE

Levitia House epitomizes the pinnacle of contemporary design fused with the essence of luxury living. The residence boasts roughly 7,500 square feet of elegantly designed living space, characterized by a blend of sophistication and practicality. Levitia House features six exquisite bedrooms, nine lavish bathrooms, and a commodious 2-car garage. The main level, designed for fluid living and social engagements, includes a modern kitchen, broad dining and family rooms, a catering pantry, and even a unique dog wash station for pet lovers.

On the upper level, the private quarters span about 2,700 square feet, highlighted by an impressive owner's suite complete with dual walk-in closets. The lower level, approximately 2,250 square feet, serves as an entertainment haven, offering a recreation room, options for a gym or theater, a wine cellar, and an additional bedroom for guests or multigenerational living.

Levitia House is distinguished by avant-garde architectural elements such as European Modern Window Systems and a striking 10-foot pivot door. Its exterior features sleek stucco siding with ambient LED strip lighting, creating an inviting modern façade. Inside, wide plank engineered flooring extends throughout the home, enriched by custom built-ins and sleek, minimalist European cabinetry. For those seeking the ultimate in customization and convenience, optional upgrades include a luxurious swimming pool, comprehensive full-house automation, and bespoke furnishing solutions, making Levitia House a true masterpiece of modern living.



THE DETAILS

PROPERTY INFORMATION

Finished (SqFt) 7500±

BEDROOMS + BATHROOMS

6 Bedrooms

9 Bathrooms

INTERIOR FEATURES

3 Floors

Engineered wood I-joist floor system

Floating Wood Staircase

Walk-In Closets

Fireplace

Smart Lighting

EXTERIOR FEATURES

2 Car Garage

16' Aluminum Pivot Front Door

Professional Landscaping

Rayner's Belgium Aluminum Windows

SYSTEMS

Full Featured Intercom with Touch Pads

Whole House Multi-Zone Audio System

200-amp electrical service

LED Lighting along Staircase

High Efficiency Multi System, Multi Zone Gas

Furnace, HVAC Systems

SECOND FLOOR



FIRST FLOOR



BASEMENT





NIRVANA HOUSE

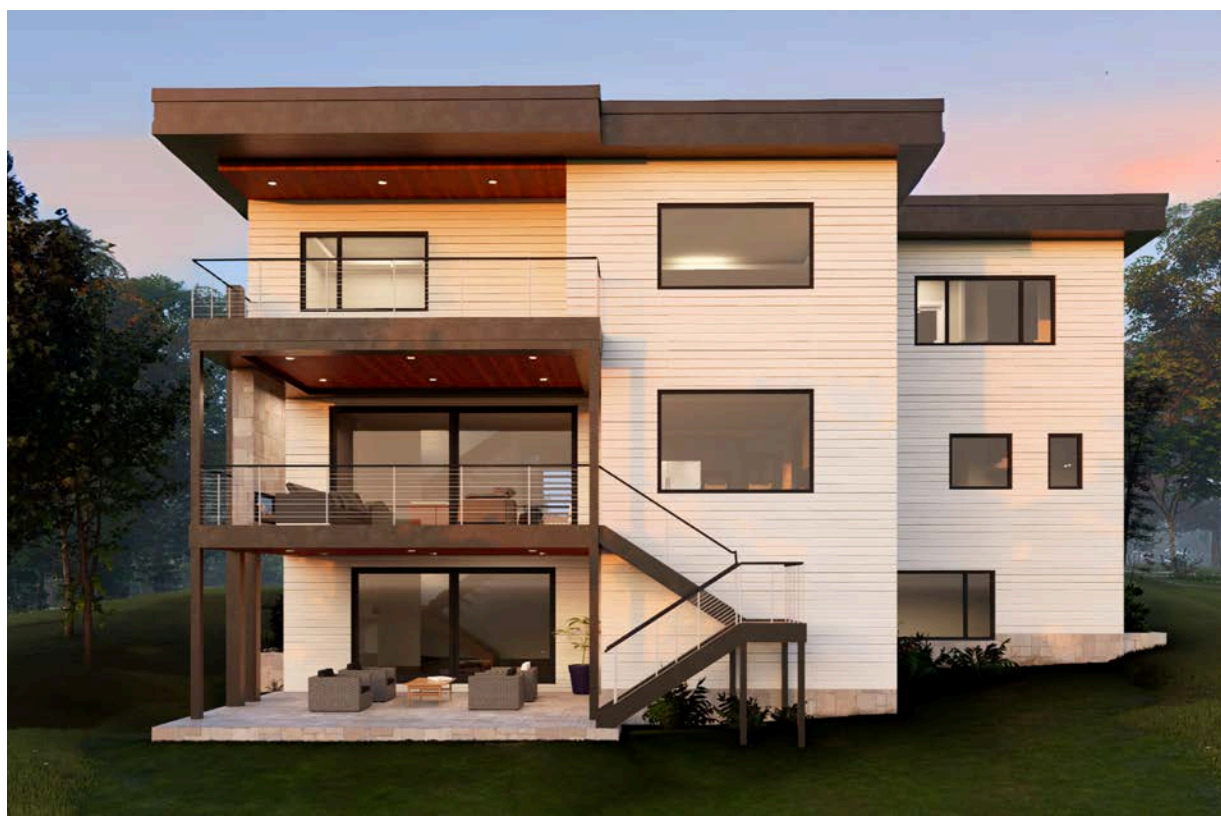
NIRVANA HOUSE

Nirvana House is a stunning example of modern design and luxurious living. This exceptional residence offers over 7,500± square feet of sophisticated living space, blending elegance and functionality. Nirvana House provides the perfect combination of suburban tranquility and urban convenience.

This extraordinary home features five opulent bedrooms, eight luxurious bathrooms, and a spacious 2-car garage. The main level, spanning 2,523 square feet, is designed for seamless living and entertaining, with a modern kitchen, expansive dining and family rooms, a catering pantry, and even a dedicated dog wash station.

The upper level offers 2,706 square feet of private quarters, including a spectacular owner's suite with his and hers walk-in closets. The lower level, featuring 2,250 square feet, is the ultimate entertainment space, complete with a recreation room, optional gym or theater, wine cellar, and additional bedroom.

Nirvana House boasts cutting-edge design details such as European Modern Windows, a show-stopping pivot door, and sleek stucco siding with LED strip lighting. Inside, wide plank-engineered flooring flows throughout, complemented by custom built-ins and minimalist European cabinetry. Optional upgrades include a luxurious swimming pool, full-house automation, and a fully furnished home, offering the ultimate in convenience and style.



THE DETAILS

PROPERTY INFORMATION

Finished (SqFt) 7,500±

BEDROOMS + BATHROOMS

5 Bedrooms

8 Bathrooms

INTERIOR FEATURES

Modern kitchen with European cabinetry and catering pantry

Wide Plank Engineered flooring

Multiple modern gas fireplaces

Floating stairs with glass railings

2-story foyer

Custom built-ins

EXTERIOR FEATURES

European Modern Windows

10-foot pivot door

LED strip lighting

3 car garage

SYSTEMS

Optional full-house automation

Advanced audio and video systems

Optional elevator

High-efficiency HVAC and utility systems

Smart home technology integration



A modern, two-story house is shown at dusk. The house features a light-colored stucco exterior, dark horizontal siding, and large windows. A prominent overhang with a wooden ceiling and recessed lighting extends over the entrance area. The interior lights are on, and some plants are visible through the windows. In the foreground, there is a landscaped area with green grass and a dark wooden fence. The sky is a deep blue with some light clouds.

AURORA HOUSE

AURORA HOUSE

Aurora House is a stunning contemporary home that redefines luxury living. This architectural gem offers over 7,500± square feet of cutting-edge design, blending sophistication with functionality and providing the perfect balance of modern elegance and suburban tranquility.

With five opulent bedrooms, eight luxurious bathrooms, and a spacious 3 car garage, the home also features an optional elevator for convenience. The main level includes a state-of-the-art kitchen, expansive dining and family rooms, a catering pantry, and a dedicated dog wash station. The upper level offers a private owner's suite with separate his-and-hers closets, plus three additional bedrooms. The lower level is a leisure haven, complete with a recreation room, optional gym or theater, wine cellar, and additional bedroom.

Aurora House's design features include European Modern Windows that flood the home with natural light, a striking pivot door, and sleek stucco siding with LED lighting. Inside, wide-plank engineered flooring, custom built-ins, and European cabinetry create a minimalist yet luxurious feel. Optional upgrades include a swimming pool, full-home automation, audio/video systems, and even a fully furnished home.

More than just a residence, Aurora House is a sanctuary where modern technology and timeless design come together to elevate your lifestyle.



THE DETAILS

PROPERTY INFORMATION

Finished (SqFt) 7,500±

BEDROOMS + BATHROOMS

5 Bedrooms

8 Bathrooms

INTERIOR FEATURES

Wide-plank engineered flooring

Multiple modern gas fireplaces

Floating stairs with glass railings

2-story foyer

Recreation room, optional gym or theater, and wine cellar

Custom dry sauna and steam shower

Exercise room

EXTERIOR FEATURES

European Modern Windows

10-foot pivot door

LED strip lighting

3-car garage

Optional swimming pool

SYSTEMS

Optional full house automation

Advanced audio and video systems

Optional elevator

High-efficiency HVAC and utility systems

Smart home technology integration



ELYSIUM HOUSE



ELYSIUM HOUSE

Elysium House is an extraordinary residence that defines the future of modern living. Crafted by EVBUILD, one of Northern Virginia's premier homebuilders, Elysium House is a true masterpiece that blends innovation with sophistication.

This home spans over 7,800± square feet of carefully designed living space, offering five luxurious bedrooms, eight opulent bathrooms, and a spacious three-car garage. Each room is thoughtfully crafted to provide both elegance and practicality, with an optional elevator ensuring seamless accessibility for every lifestyle.

The expansive layout includes an open-concept living area designed for seamless flow between spaces, ideal for both relaxation and entertaining. The heart of the home features a state-of-the-art kitchen, large dining and family rooms, and a catering pantry for the culinary enthusiast. A thoughtful home office provides space for productivity, while the spacious bedrooms offer private retreats.

Optional upgrades allow you to further customize your living experience. Choose from a stunning swimming pool, advanced full-house automation for effortless control of your environment, cutting-edge audio and video systems, or even a fully furnished home tailored to your personal style. Every detail in Elysium House has been designed with luxury and functionality in mind, ensuring that this residence is truly one-of-a-kind.



THE DETAILS

PROPERTY INFORMATION

Finished (SqFt) 7800±

BEDROOMS + BATHROOMS

5 Bedrooms

8 Bathrooms

INTERIOR FEATURES

3 Floors

Engineered wood I-joist floor system

Floating Wood Staircase

Walk-In Closets

Fireplace

Smart Lighting

EXTERIOR FEATURES

Three Car Garage

16' Aluminum Pivot Front Door

Professional Landscaping

European Modern Windows

SYSTEMS

Full Featured Intercom with Touch Pads

Whole House Multi-Zone Audio System

200-amp electrical service

LED Lighting along Staircase

High Efficiency Multi System, Multi Zone Gas

Furnace, HVAC Systems



BASEMENT

FIRST FLOOR





LUMI HOUSE

LUMI HOUSE

Step into a world of refined luxury with this stunning three-story modern residence, a seamless fusion of style and comfort designed for today's most discerning homeowner. Thoughtfully curated with both grandeur and practicality in mind, this five bedroom, six bathroom home is more than just a place to live, it's a lifestyle statement.

Spanning three incredible floors of living, every detail of this home is designed for both effortless entertaining and everyday comfort. The heart of the home is a gorgeous chef's kitchen, where high-end appliances, sleek cabinetry, and a spacious island set the stage for culinary creativity. Flowing seamlessly into the family room, this open-concept space is warmed by a striking fireplace, creating an inviting yet sophisticated atmosphere.

Beyond the main living space, a private office offers a tranquil retreat for productivity, while a well-appointed mudroom keeps daily essentials neatly organized. Fitness enthusiasts will appreciate the dedicated gym, while the expansive recreation room provides endless possibilities for relaxation or entertainment.

Each of the five bedrooms is a haven of comfort, featuring spa-like en-suite bathrooms with double luxury modern finishes. The primary suite is a sanctuary of its own, offering a serene escape with luxurious details at every turn.

With a two-car garage for added convenience and three thoughtfully designed floors of elegant living, this home truly encapsulates all the luxuries of life.



THE DETAILS

PROPERTY INFORMATION

Finished (SqFt) 7500±

BEDROOMS + BATHROOMS

5 Bedrooms

6 Bathrooms

INTERIOR FEATURES

3 Floors

Engineered wood I-joist floor system

Modern Staircase

Walk-In Closets

Fireplace

Smart Lighting

EXTERIOR FEATURES

2 Car Garage

Professional Landscaping

European Modern Windows

SYSTEMS

Full Featured Intercom

Whole House Multi-Zone Audio System

200-amp electrical service

LED Lighting along Staircase

High Efficiency Multi System, Multi Zone Gas

Furnace, HVAC Systems



FIRST FLOOR PLAN



SECOND FLOOR PLAN



BASEMENT PLAN



YOUR DEDICATED SALES TEAM



ALI ALASGAR FARHADOV
REALTOR®

ALASGAR@COMPASS.COM

M: 703-989-3344



SHERIF ABDALLA
EVP | REALTOR®

SHERIF@COMPASS.COM

M: 703-624-5555

Our sales team is your exclusive guide to the areas most coveted homes, offering insider access to impeccably crafted new construction, thoughtfully designed floor plans, and upcoming releases, as well as a curated selection of luxury properties. With extensive knowledge of architectural details, premium finishes, and customization options, we provide a tailored approach to finding a home that reflects your lifestyle. Whether you're comparing layouts, refining design selections, or navigating the purchasing process, our team's expertise ensures clarity and confidence at every turn. From private tours and availability updates to personalized consultations on features, upgrades, and investment potential, we deliver a seamless experience, bringing you one step closer to the home of your dreams.



TEAM MEMBERS



KATE KARAFOTAS
REALTOR®
KATE.KARAFOTAS@COMPASS.COM
M: 571.228.8932



CAITLIN PLACHTA
MARKETING + OPERATIONS
CAITLINPLACHTA@COMPASS.COM
M: 239.222.1978



DREW CARPENTER
REALTOR®
DREW.CARPENTER@COMPASS.COM
M: 518.788.8140



DYLAN MALTZ
REALTOR®
DYLAN.MALTZ@COMPASS.COM
M: 973.945.7651



SAM PILEVAR
REALTOR®
SAM.PILEVAR@COMPASS.COM
M: 301.873.2784

COMPASS

6849 Old Dominion Dr #400,
McLean, VA 22101
703.310.6111



SCAN HERE TO
SHARE THIS BOOK!

Where Dreams Meet Design



SHERIF ABDALLA
703.624.5555
SHERIF@COMPASS.COM

ALI FARADOV
703.989.3344
ALASGAR@COMPASS.COM

