

PARTNERS FOR HEALTH



Simplifying Your Journey to Health

Troy E. Sybert, MD, MPH, CUA

A close-up portrait of a Black woman with short, dark hair, smiling warmly at the camera. She is wearing light blue medical scrubs. The background is softly blurred, suggesting a clinical or hospital setting.

THE JOURNEY2HEALTH PROGRAM

We empower patients by transforming complex medical records into clear, actionable health plans. From managing medications to setting personalized goals, our AI agents put patients in control by understanding their unique medical context.

PROBLEM

MARKET GAP

The need for concise medical information targeted to patients is not found in the world of fragmented health care delivery.

CARE MODELS

Chronic condition management requires daily support, not episodic care.

PATIENTS

The number of diseases, medications, and tests only increase...how do people keep up and turn that into information that makes them healthier.

USABILITY

Patients want information that empowers them in their journey to health.

CURRENT TECHNOLOGY

Chatbot medical advice is often generic and only in a niche, not tailored to individual health contexts.

CARE MODELS

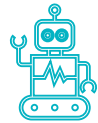
Chronic condition management requires daily support, not episodic care

SOLUTION



CLOSE THE GAP

Our product takes fragmented data and curates it into actionable information and integrates it into patients' lives.



PATIENT SPECIFIC TECHNOLOGY

Each patient's unique medical history becomes the foundation for a continuously learning AI assistant that offers personalized support



TARGET AUDIENCE

Patients and caregivers with interactions with the healthcare systems across the nation.



EASY TO USE

Patients become informed and active thus empowered in their health journey.



Collect and Collate

DISPARATE DATA

HIGH LEVEL

COLLECT AND COLLATE

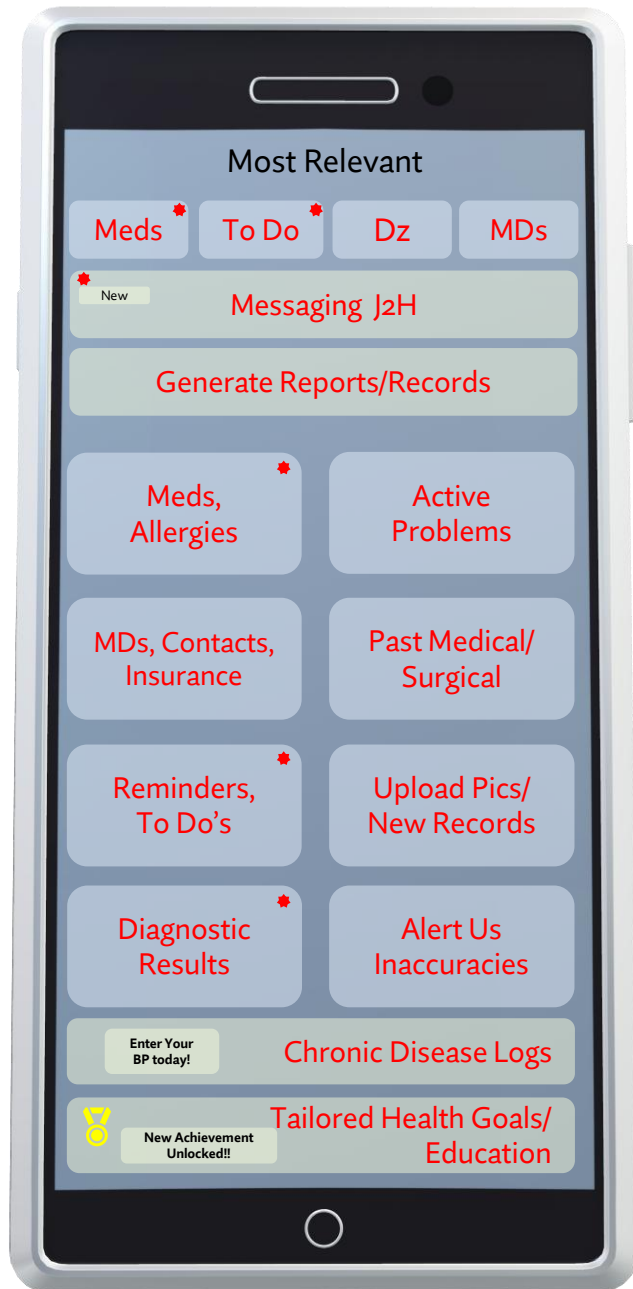
Information sent from your various providers, tests, medication lists, etc. to our clinic.

CURATE

Aided by artificial intelligence, our clinicians go through that data in recording and maintaining your health record.

DELIVER

Your health record is then delivered to the J2H App on your device of choice. Easy to use and most important, easy to understand.



Understandable: Medical data is translated into plain language—no more confusing jargon.

Personalized: Every insight and recommendation is tailored to the patient's unique health profile.

Convenient Access: Health information available anytime, anywhere—mobile-first and user-friendly.

AI + Interaction: Combines point-and-click navigation with smart, conversational AI for flexible engagement.

Actionable Insights: From daily goals to medication reminders—patients receive clear, step-by-step guidance.

MARKET OVERVIEW



OVER 129 MILLION

Americans manage at least one long term condition

53 MILLION FAMILY CAREGIVERS

Provide unpaid support with access to reliable and personalized tools.

\$93.8B TO \$297.8B

10 yr growth in digital health market fueled by advances in AI, personalized care, and remote monitoring.

90% OF 4.5 TRILLION

Healthcare expenditures toed to chronic conditions and mental health.

COMPETITIVE LANDSCAPE

Journey2 Health Differentiators

Personalized AI agents grounded in full medical history

Built by clinicians with 20+ years of patient care experience

Designed for continuity, clarity, and daily decision support

GENERIC MEDICAL CHATBOTS

Limited to symptom checking; no personal context or memory

EHR PORTALS

Static, data-heavy; not interactive or supportive

CONDITION-SPECIFIC APPS

Narrow scope; don't address whole-person care or comorbidities

COMPANY OVERVIEW

VIRTUAL CLINIC SINCE '23

Focused on chronic disease management through personalized care.

Actively seeing patients in a telehealth model while developing Journey2Health.

Key feedback from patients with willingness to continue to support development.

Guided by advisory board of entrepreneurs and healthcare executives

TROY E. SYBERT, MD, MPH, CUA

Founder and physician with 20+ years of executive experience in major U.S. health systems.

Fellowship-trained at world-class institutions including the Mayo Clinic while being double board-certified in General Preventive Medicine/Clinical Informatics

Led multiple EMR implementations and clinical workflow redesigns led to combining clinical, operational, and technical expertise to drive J2H's AI-powered care model

2025 ACTION PLAN

- User interface optimization
- Cloud platform selection
- NVIDIA optimization planning

Q2

- Measure engagement, satisfaction, and care impact
- Iterate on UI/UX and personalization
- Pursue clinical/payer partnerships for expansion

Q4

MVP Completed
(Local Hosting)

Q1

- Cloud deployment to selected platform
- Implement NVIDIA RAPIDS for data extraction and encoding
- Begin real patient onboarding

Q3



Thank You!!

THE ASK

- ✓ NVIDIA Inception Program support for RAPIDS optimization
- ✓ Cloud GPU credits and technical guidance
- ✓ Networking with partners in healthcare AI

WHY NVIDIA

- ✓ RAPIDS acceleration is key to our real-time processing goals
- ✓ Critical for JSON-to-graph transformation and terminology encoding
- ✓ Enables sub-500ms AI response times for patient-facing interactions



“just what the doctor ordered!”