



# SHAKER STYLE LIVING ROOM

..... *contemporary but with a shaker twist*

EXERCISE 2

GRACE YANG | INDS 211 | SUMMER 2020 | PROFESSOR CHRISTINE VAN DUYN

## What is the Shaker Style?

The Shaker design style gets its principles from a branch of Christianity — the Shakers — members of a religion who produced the style. The actual name of the religion is the United Society of Believers in Christ's Second Appearing. Practitioners of this religion were nicknamed "Shakers" because during prayer services, they would dance so vigorously that they would appear to shake.

During the mid 1800's, Shaker communities spread throughout the New England and Nordic landscape, committed to a simple lifestyle that resulted in the development of the Shaker style. Since the Shaker belief system revolved around hard work as well as freeing oneself from unnecessary desires, the Shaker style was defined through unadorned lines, unrivaled craftsmanship, and an assurance of quality.

Their style of design is one of the early attempts of what we know today as minimalism but with a natural flair. In the present day, 150 years after the Shakers settled in the United States, their contributions to interior and furniture design are still widely appreciated and crafted.



# Shaker Style Characteristics

- Built-in storage
- Peg rails for hanging objects
- Love for thrifted/local items
- Natural hue color palette (oatmeal, off-white, muted colors)
- Minimal decoration
- No fancy beadings, moldings, or cornices
- Natural woods (cherry, maple, pine, oak, birch, walnut, teak)
- Daylight > artificial light
- Utilitarian furniture with plain lines
- Exposed timber beam frames

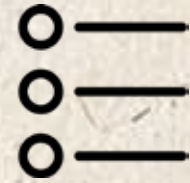


# The Millennial Laws

The Shaker lifestyle was dedicated to obeying the Millennial Laws, which were also visually communicated in their interiors.



time



order



space



simplicity



perfection



utility



cleanliness



health



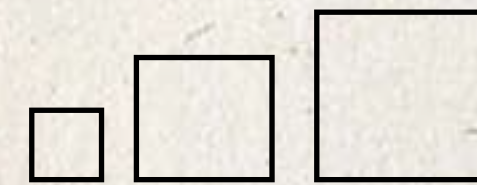
thrift



honesty



permanence

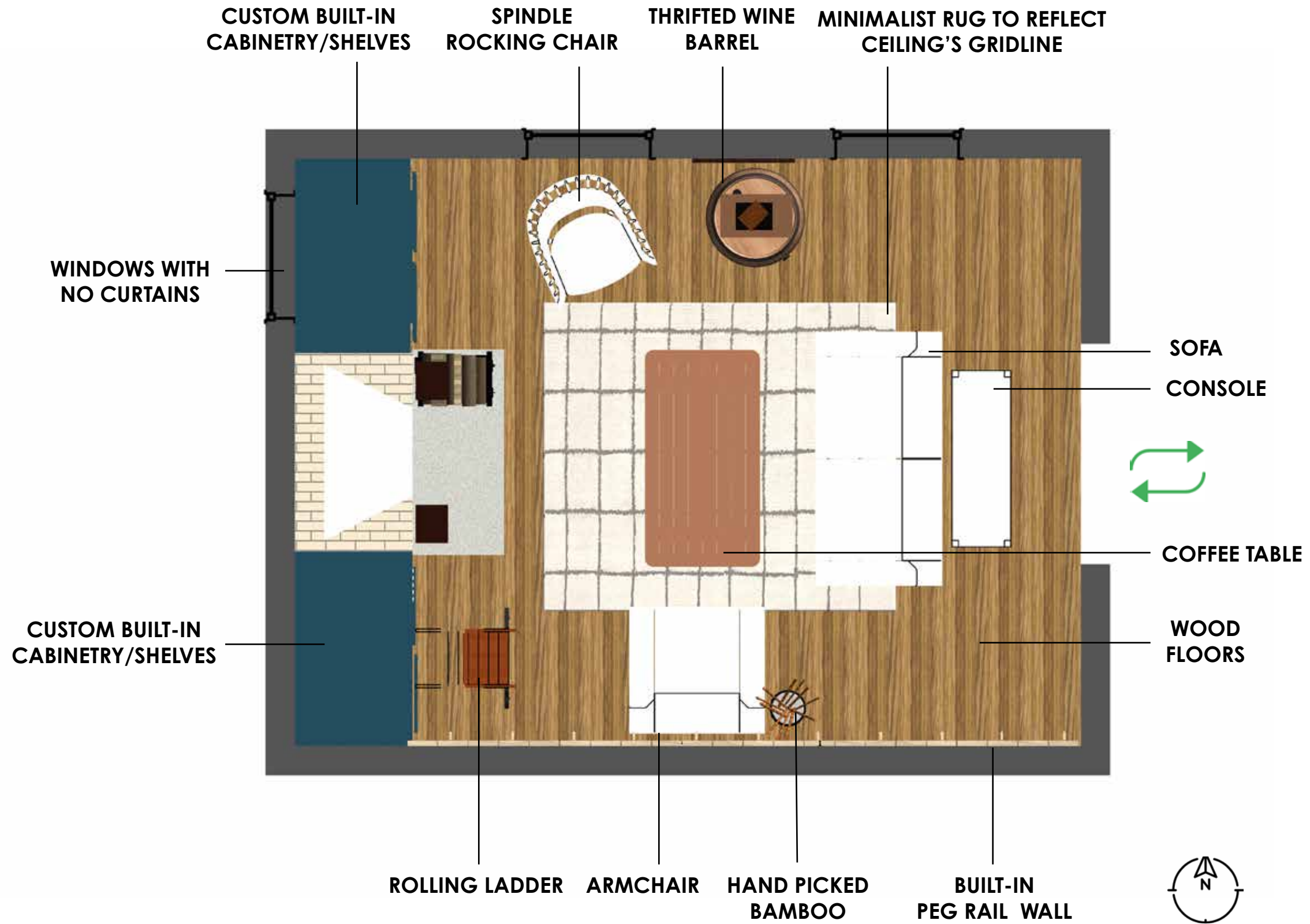
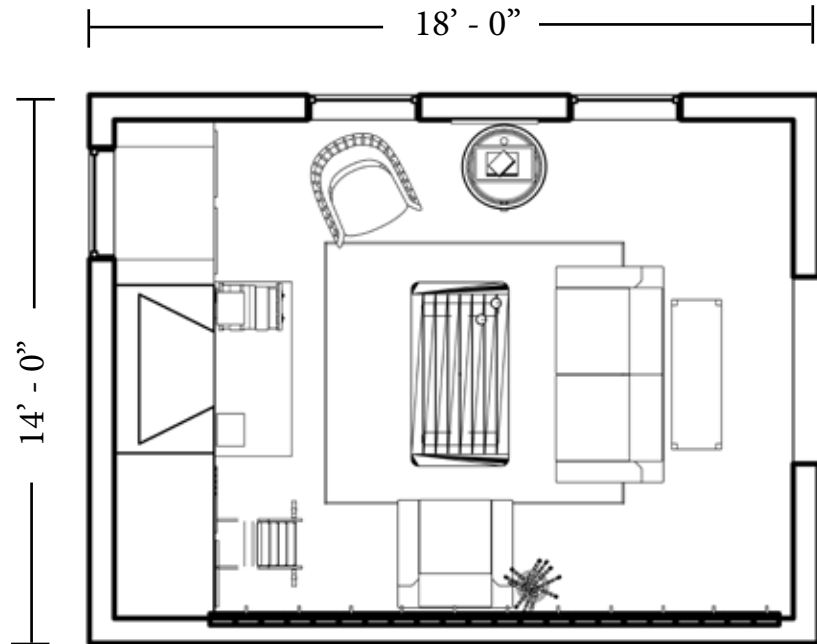


progress

# Floor Plan

For my living room design, I decided to focus on the ideas of the Millennial Laws and incorporate them in meaningful ways. The design is fully Shaker inspired by keeping materials to their true raw form, embracing simple symmetry, and using finely crafted furniture. Contemporary approaches can be seen by the use of unique installations in hardware, a variety of fashionable wooden textures, and purposeful decoration. This design is meant to captivate users by creating a cozy, earthy, and charming ambiance. This is a living room that blends modern and Shaker elements into one.

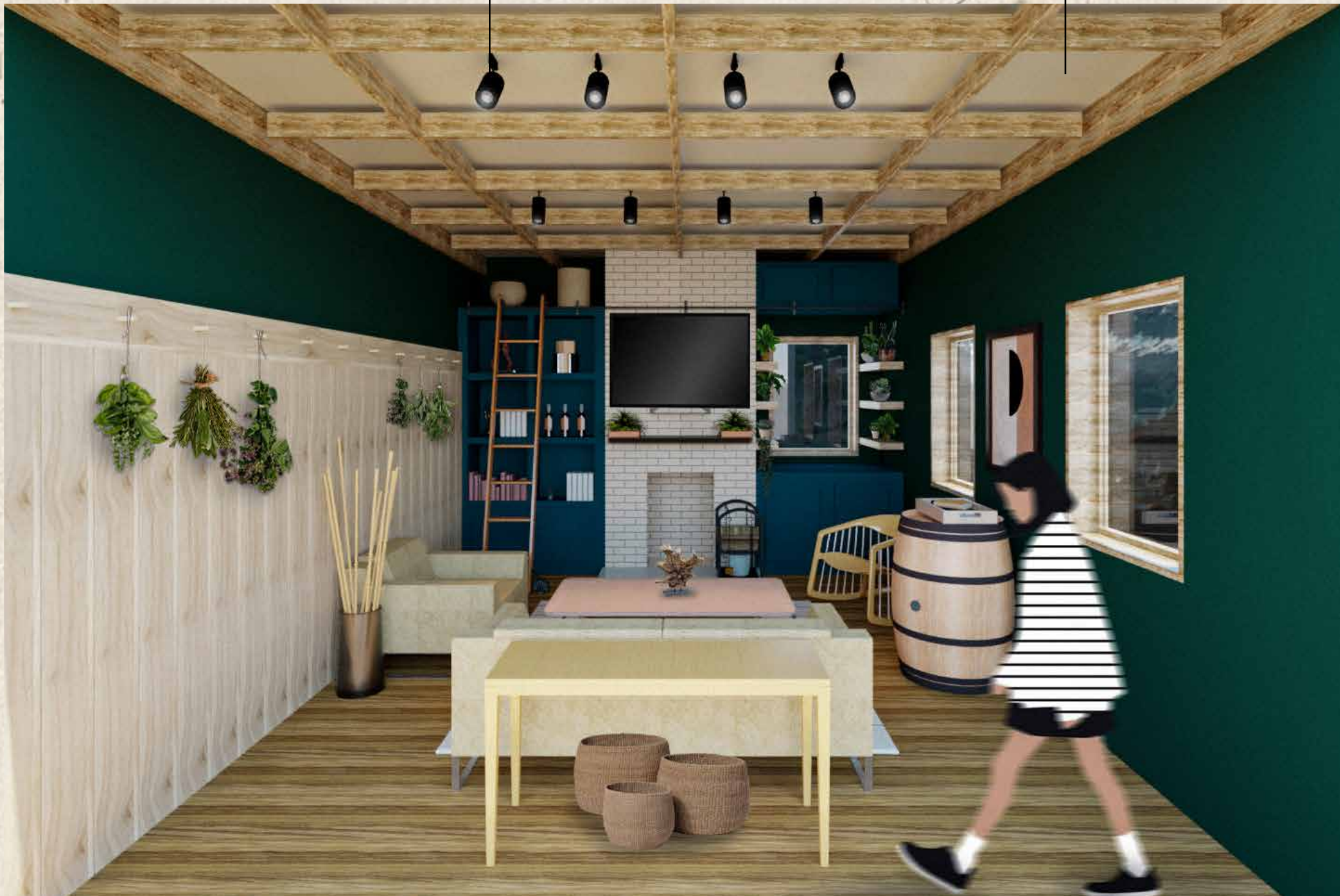
**AREA: 252 SQ. FEET**



# Shaker Style Living Room

Track lights add a visually and aesthetically pleasing spotlighting effect. The flexibility of the position for each light gives room for interesting task lighting when the natural light starts to dim.

The ceiling is painted an off-white to symbolize purity of the Shaker faith and then layered with a grid pine timber beam system to symbolize the Shaker's love for high-quality construction.



## COLOR PALETTE:

Oatmeal, off-white, and muted colors were typical for Shaker interiors because they were simple. Bolder colors such as forest green and teal blue are popular in contemporary interiors because when placed together, they create an attractive blue-green relationship that interacts with light wood very nicely.

## WINDOWS:

The curtainless windows bring a generous amount of sunlight inside, symbolizing heavenly light. **The Shaker's Millennial Law of Time** is represented by having users appreciate the sunlight/shadows playing throughout the day and night.

## FORM:

This living room's mission is to feel like heaven on earth. To achieve this, the design utilizes the **Shaker's Millennial Law of Perfection** by nurturing blank middle points, carefully placing accessories, and applying simple symmetry. Walls opposite each other are the same color, common patterns such as the rug and ceiling reflect each other, and each item has room to breathe on its own.

## DECOR:

By praising the **Shaker's Millennial Law of Honesty**, non-stained wood throughout acts as decor by itself, seen in the handpicked bamboo sticks, tree bark sculptures, coffee/console tables, exposed timber beams, or even the peg rails.

Baskets are simple, sturdy, and useful; they are admired in many modern residential projects for its authentic woven texture.

Artwork on the walls were uncommon for the Shakers, but today, they are almost a must because it makes the space feel complete.

# Shaker Style Living Room

A simple, abstract shape painting was chosen to pull the windows together. Contemporary projects go for abstract artwork because they have an expressive appeal.

The Shakers' lifestyle was economical, meaning that they liked to thrift and save used items. The wine barrel is a contemporary piece of decor because it can be thrifted from a local winery, then used as a statement piece or table top for trays and books. This idea follows the **Shaker's Millennial Law of Thrift**.

This lounge chair includes those lightweight, spindle lines found from Shaker ladder back chairs. This item is a modern take because it has a rocking chair appeal while being constructed out of a creamy colored birch wood. It still keeps the durability and portability of a typical Shaker chair.



The east wall is painted the same color as the built-ins on the west wall in order to maintain the **Shaker's Millennial Law of Order**. An even distribution of color will satisfy feelings of balance.

The sofa/armchair are upholstered with an oatmeal colored linen, which helps ground the natural wood colors that the Shakers favored. These items are modest yet modern because of its overall sleek cushion design.

A rectangular solid wood table was preferred over anything lavish or complex. The teak plank construction plus the bark sculpture on top is a reflection of the Shakers respect towards natural materials.

Rugs help define spaces and in a Shaker dwelling, simple throw rugs added a nice soft touch to the surrounding hard surfaces. A minimalist, grid line pattern was chosen to add a sense of contemporary reflection from the grid exposed timbers above.

# Shaker Style Living Room

The existing fireplace was painted an off-white color to reflect the **Shaker's Millennial Law of Cleanliness**. The original red brick color would have looked out of place with the natural hue color palette that Shakers embraced. Light colored brick is also favored among modern projects because of its fresh appeal.



The Shakers believed in the **Millennial Law of Space**, therefore, using every accessible space as built-in storage was key. The fronts are simple with a recessed panel and round knobs to keep the **Millennial Law of Simplicity** in check.

**THE GREEN CORNER:** This corner of the living room is proposed to best utilize the existing window. There are built-in lower and upper cabinets along with built-in shelving that creatively frames the sunlight coming through. These shelves are to be a home for the user's house plants, which plays with the **Shaker's Millennial Law of Health**. A "green" corner will freshen the air and eliminate harmful toxins.



# Shaker Style Living Room

The south wall is dedicated to a built-in peg rail system, which is a reflection of the **Shaker's Millennial Law of Utility**. A contemporary approach to using the peg rails is hanging dried herbs or flowers to release pleasant aromas. This will heighten sensory experiences for the space plus lasts a long time which is representative of the **Shaker's Millennial Law of Permanence**.



A flat screen TV was added above the fireplace to act as an entertainment center and hearth.

**WHAT'S UP?:** To the left of the fireplace is a corner filled with a custom built-in storage. The lowest tier is for linens, middle tier holds specific items of display, and the top tier is for weave basket storage. A rolling ladder is installed to reach high points and helps lead eyes upwards, following the **Shaker's Millennial Law of Progression**.

THANK YOU!

