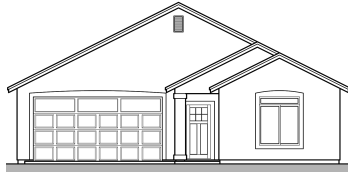




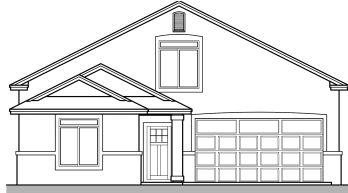
Models Overview

Copper Trails, Elko
2018 QUARTER 4 PRICING



Pearl Peak 1 \$294,900

1,548 Sq. Ft.
3 Bed, 2 Bath
2-Car Garage



Pearl Peak 2 \$328,900

1,942 Sq. Ft.
4 Bed, 2 Bath, 2-Car Garage
2 Family Rooms



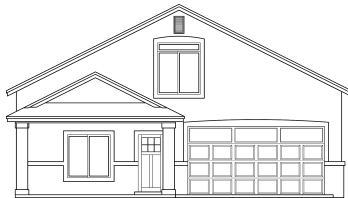
Pearl Peak 3 \$364,900

2,294 Sq. Ft.
5 Bed, 3 Bath, 2-Car Garage
2 Family Rooms



Mount Moriah \$318,900

1,785 Sq. Ft.
3 Bed, 2 ½ Bath
2-Car Garage



Mount Rose \$333,900

1,912 Sq. Ft.
3 Bed, 2 ½ Bath
2-Car Garage

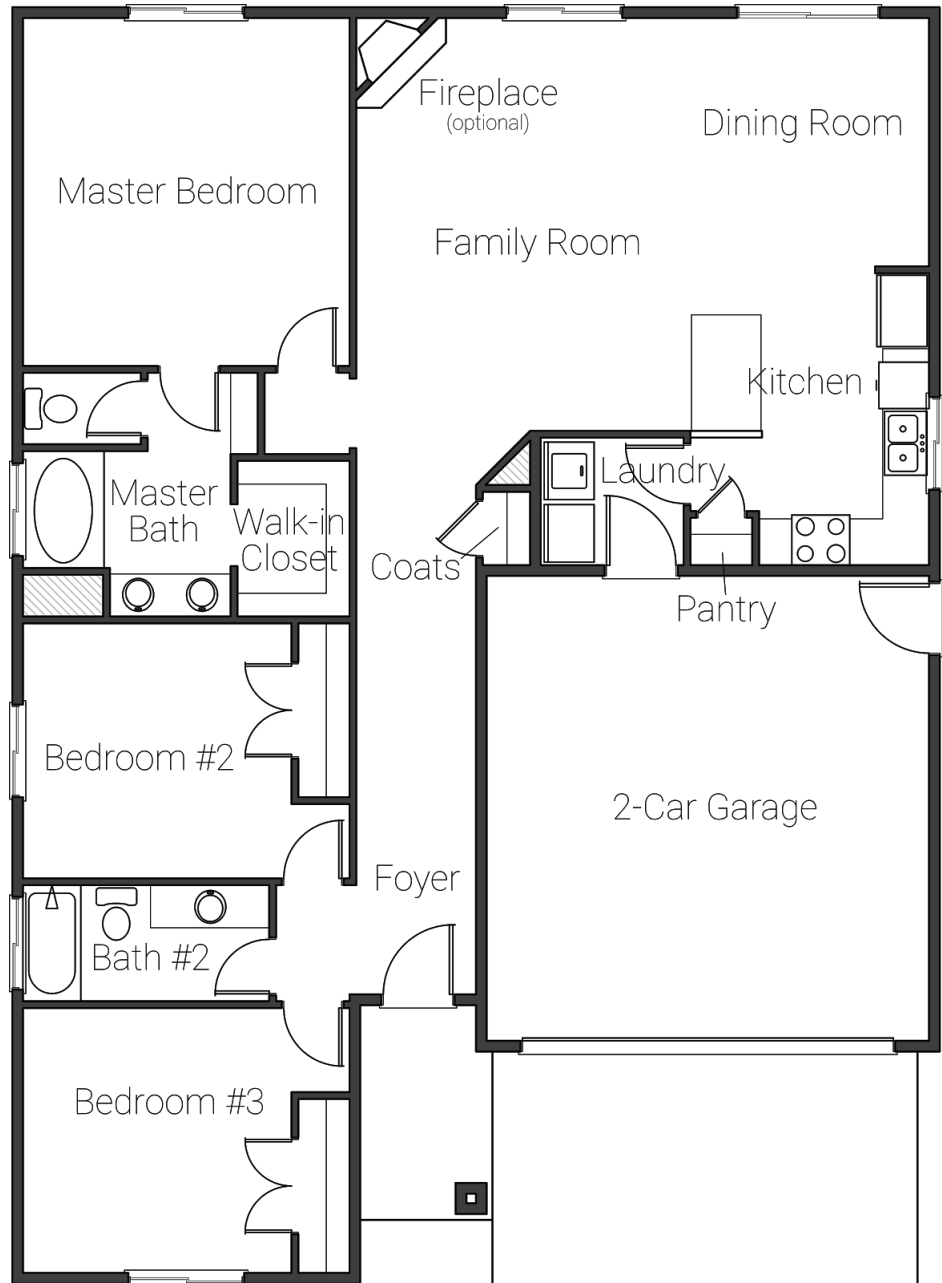
Models Overview

Copper Trails, Elko



Pearl Peak 1

1,548 Sq. Ft.
Vaulted Ceilings



All information is subject to change without notice.
koinoniaconstruction.com - 775-777-5853 - NV Lic. 82378

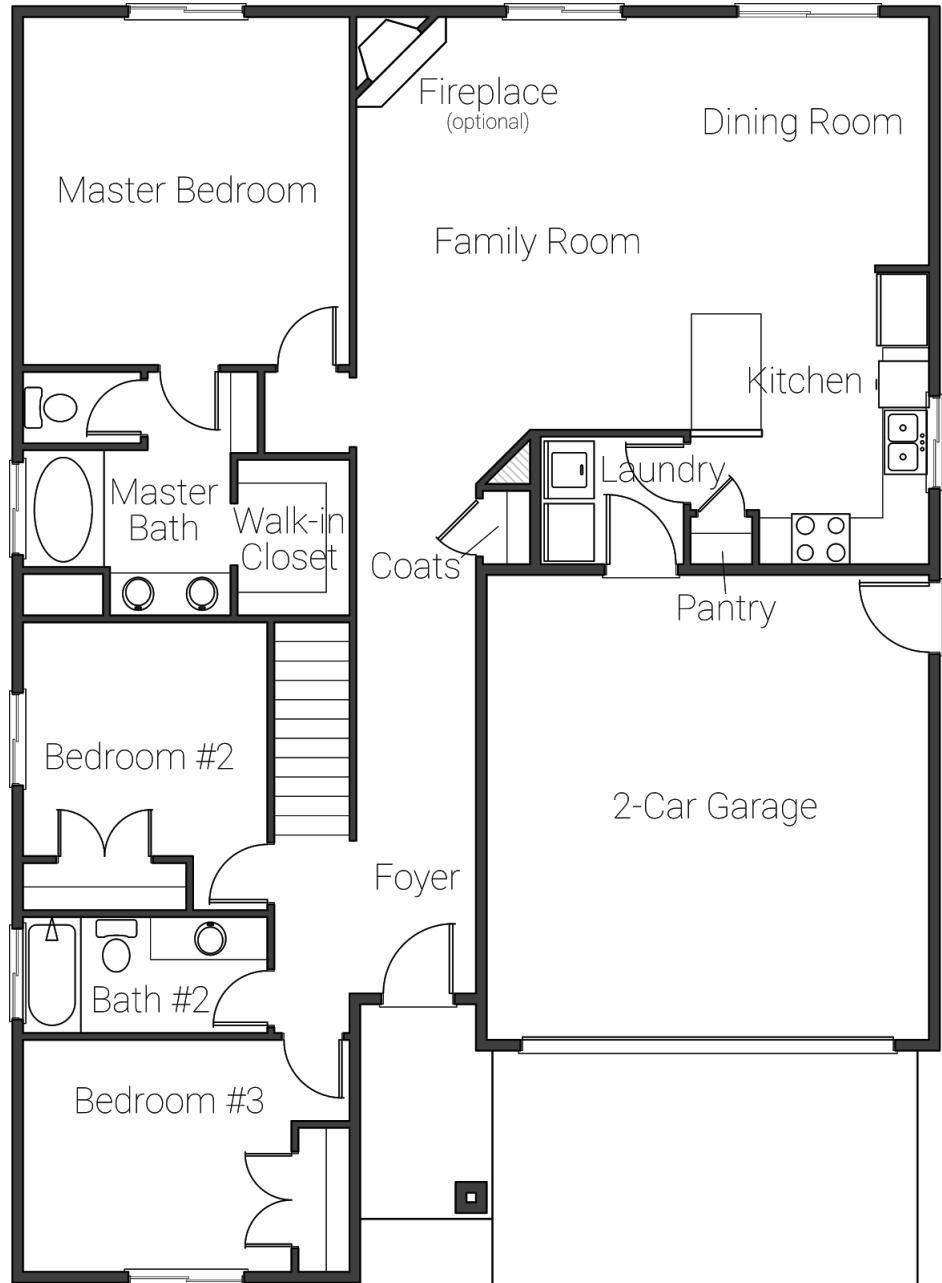
Models Overview

Copper Trails, Elko



Pearl Peak 2 & 3 Main Floor

9' Ceiling

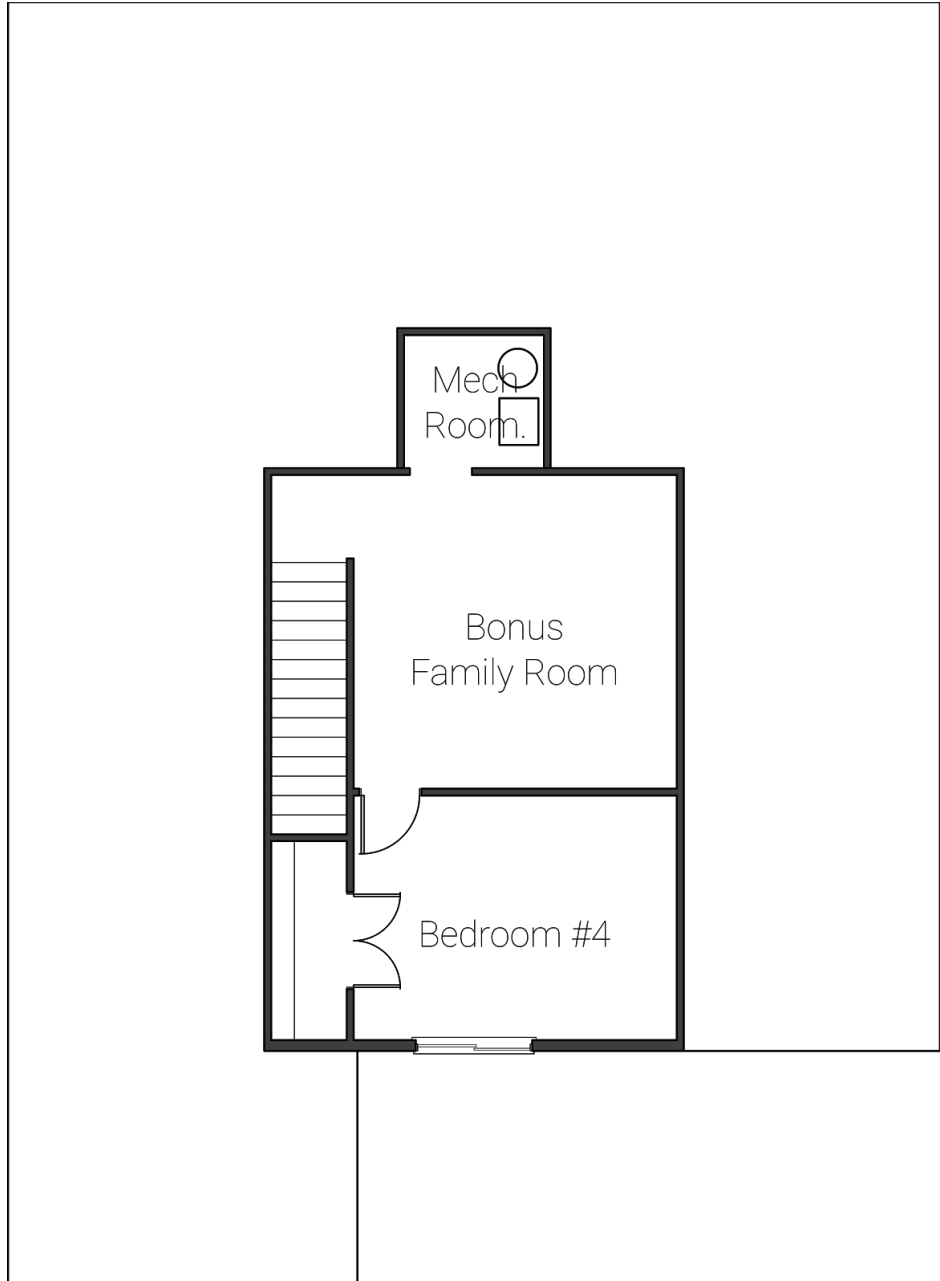


All information is subject to change without notice.
koinoniaconstruction.com - 775-777-5853 - NV Lic. 82378



Pearl Peak 2
Upper Floor

Total: 1,942 Sq. Ft.
9' Ceiling



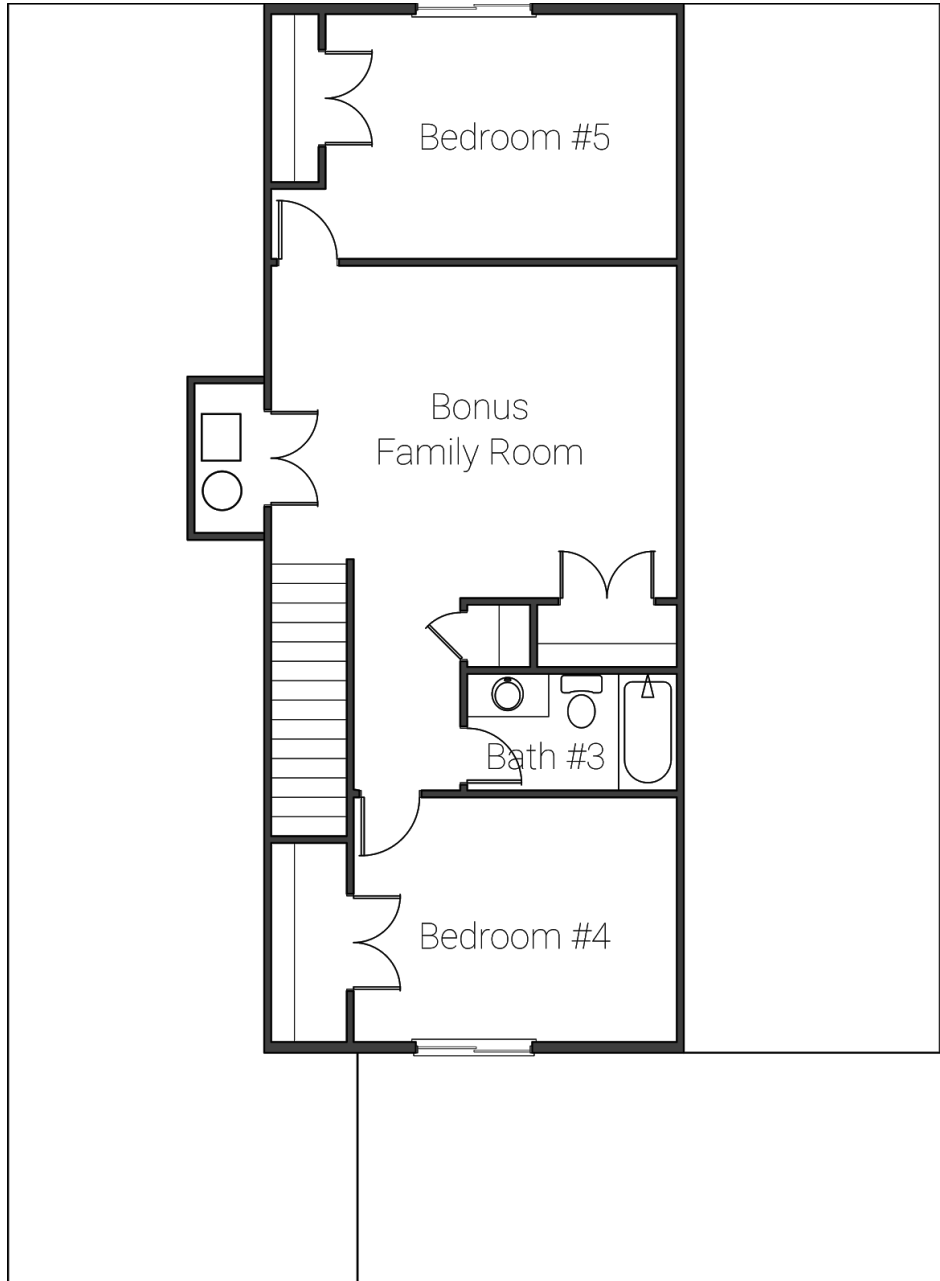
Models Overview

Copper Trails, Elko



Pearl Peak 3 Upper Floor

Total: 2,294 Sq. Ft.
9' Ceiling



All information is subject to change without notice.
koinoniaconstruction.com - 775-777-5853 - NV Lic. 82378

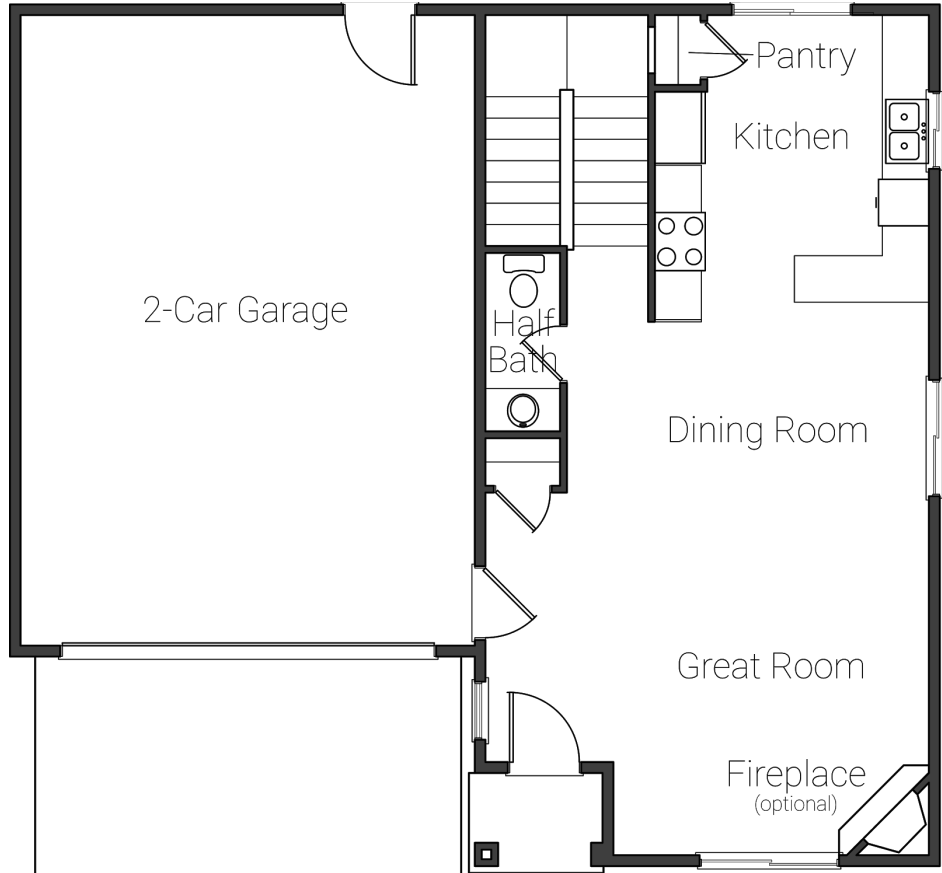
Models Overview

Copper Trails, Elko



Mount Moriah Main Floor

Total 1,785 Sq. Ft.



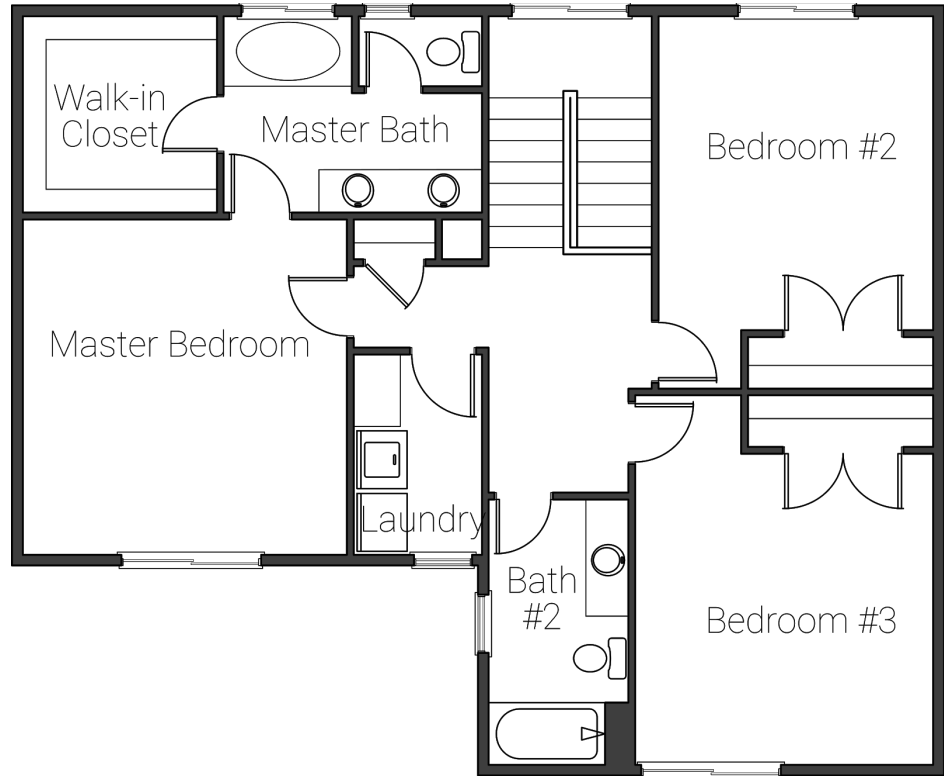
Models Overview

Copper Trails, Elko



Mount Moriah Upper Floor

Total: 1,785 Sq. Ft.



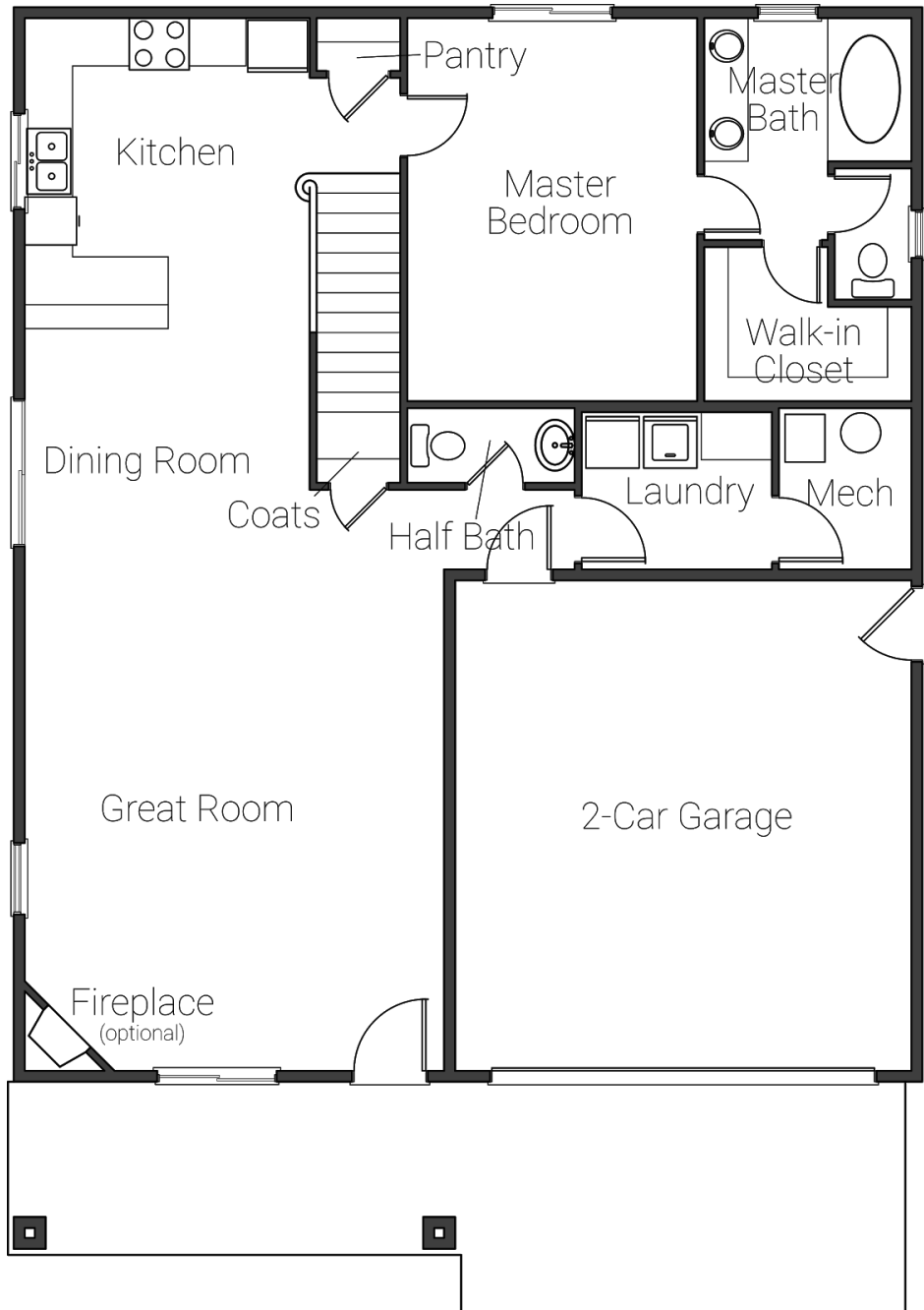
Models Overview

Copper Trails, Elko



Mount Rose Main Floor

1,912 Sq. Ft.



All information is subject to change without notice.
koinoniaconstruction.com - 775-777-5853 - NV Lic. 82378

Models Overview

Copper Trails, Elko



Mount Rose Upper Floor

1,912 Sq. Ft.

