

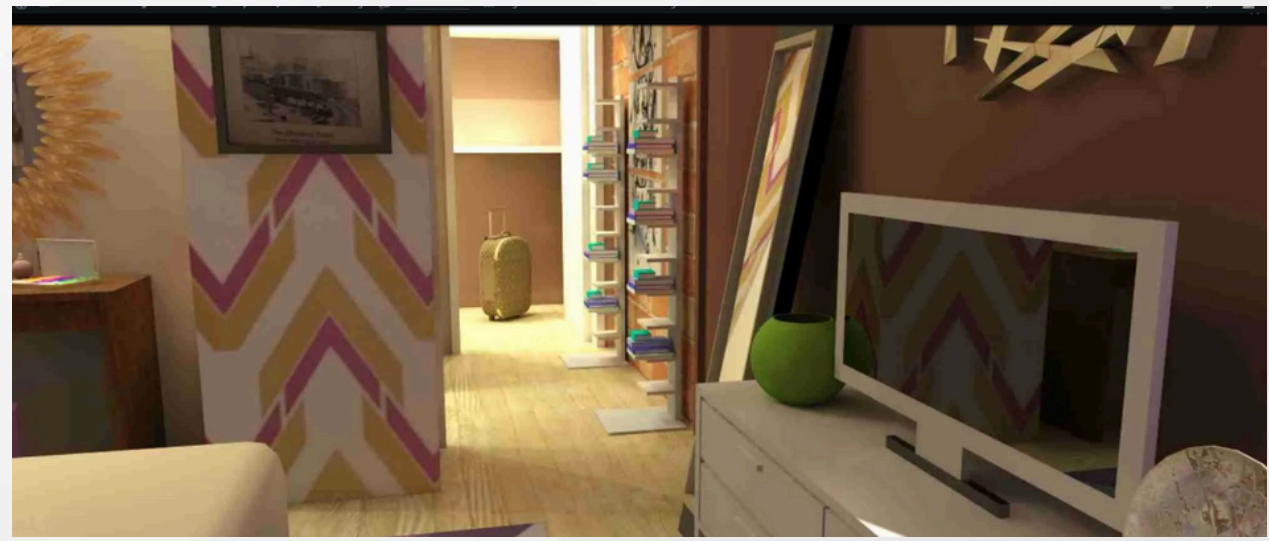
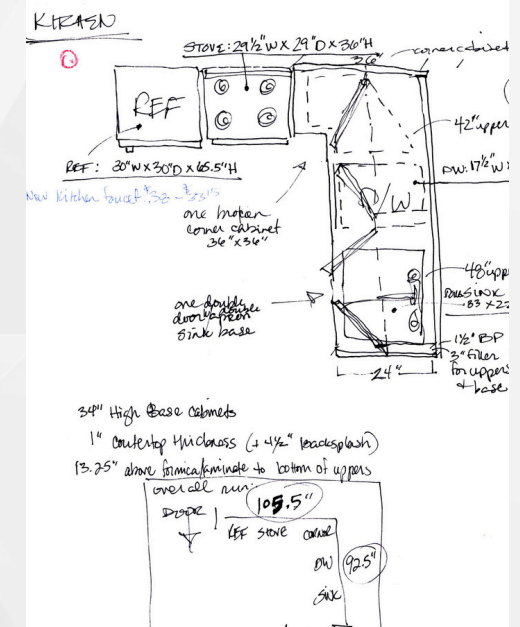
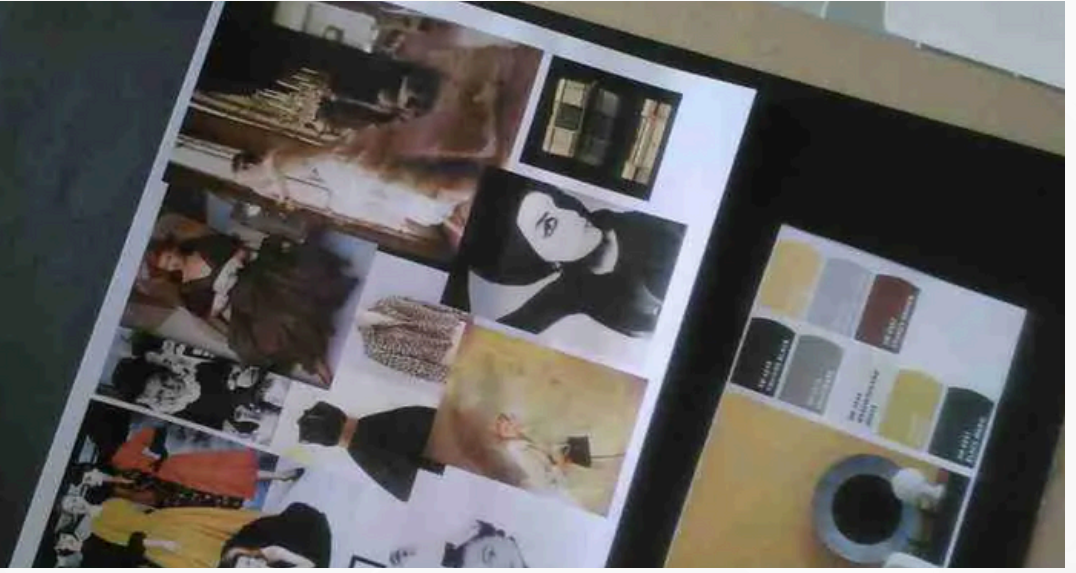
Ecstaci Abraham

PORTFOLIO



LEARN MORE ABOUT ME: ECSTACI.COM
CONNECT WITH ME ON: [LINKEDIN](https://www.linkedin.com/in/ecstaci-abraham)

INTERIOR DESIGN

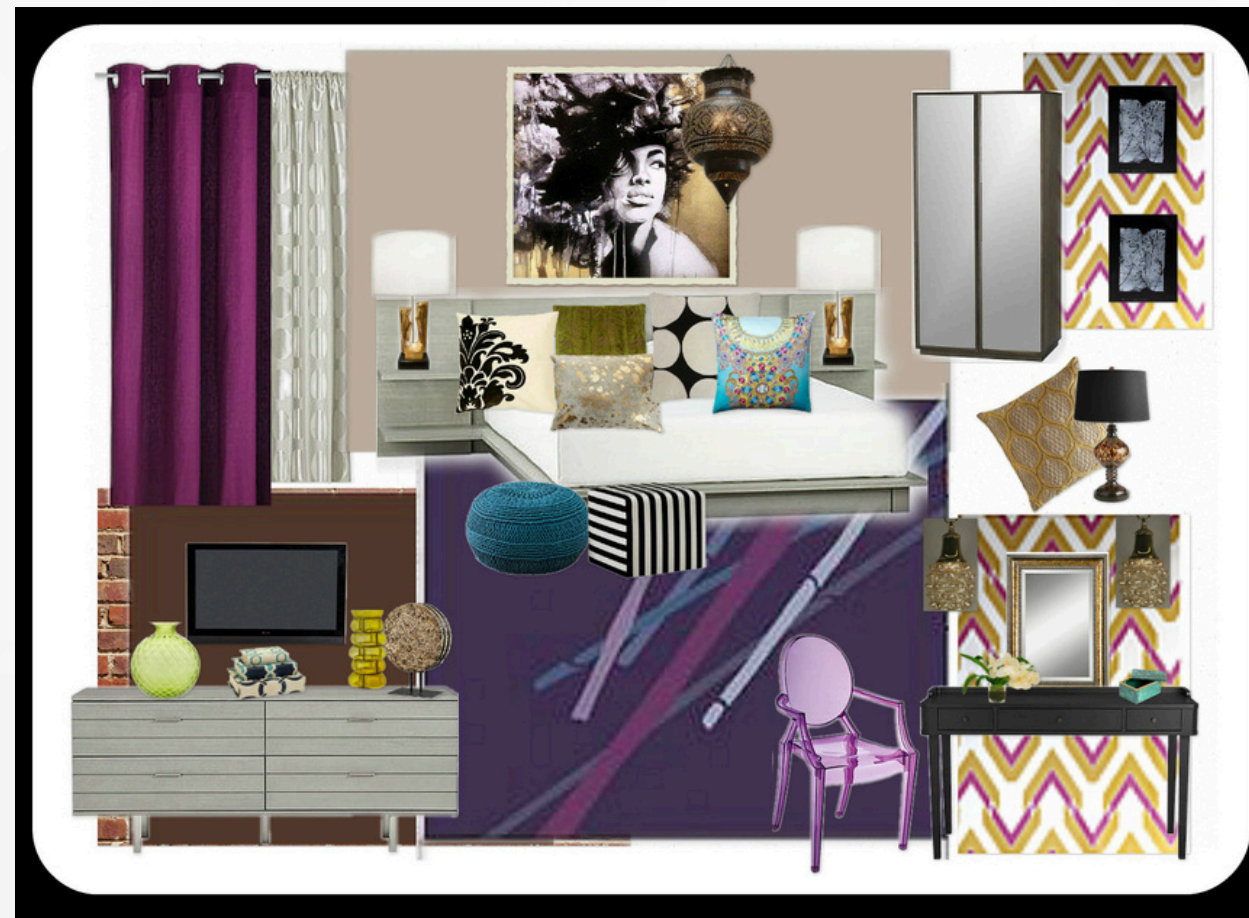
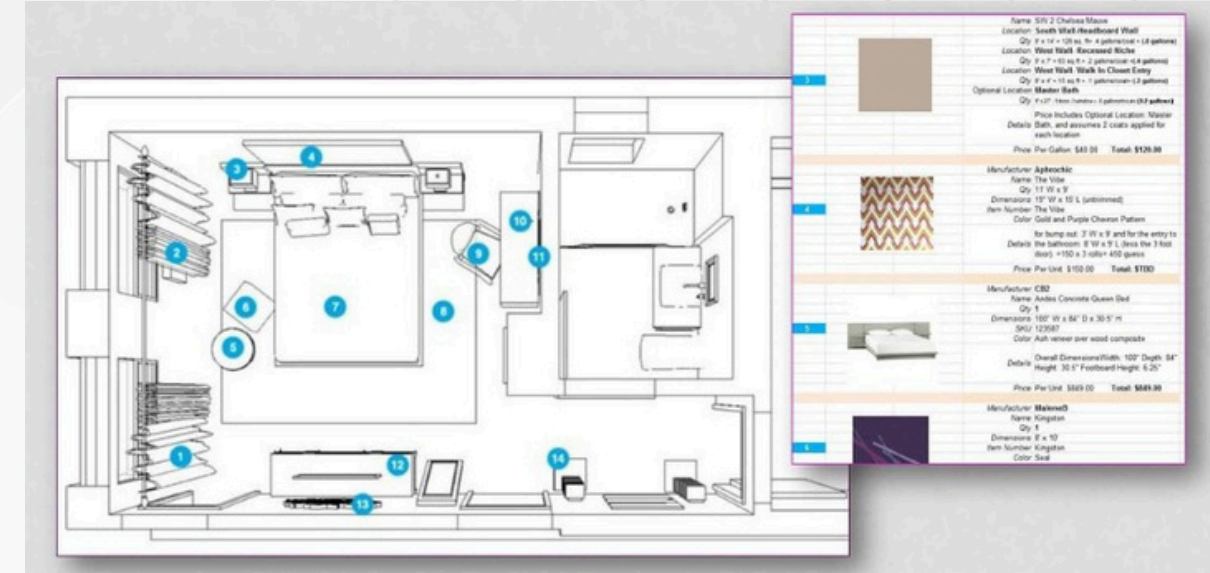
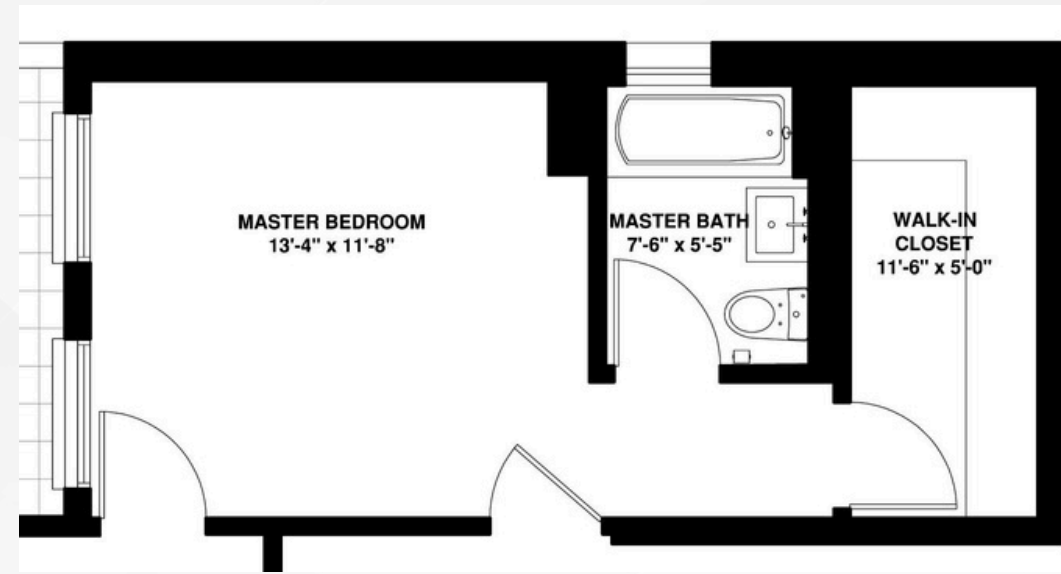


RESIDENTIAL MASTER SUITE REMODEL

The Brooklyn NYC homeowner wanted a chic contemporary sexy feminine bedroom.

I proposed a cool soft jewel tone color scheme and textures such as alexandrite, zircon, and peridot against the stark contrast of black, gray, white, and brown neutrals to yield a romantic intimate, and feminine look.

Some furnishes and finishes that complete the look are *Malene B "Kingston" carpet*, *MDM Ghost Chair*, and *IKEA Sanela and Teresa window panels* complete the interior design solution.



RESIDENTIAL BASEMENT REMODEL

Now an empty nester, this band member and homeowner wanted a place to practice singing as well as a place to conduct music lessons, and rehearsals.

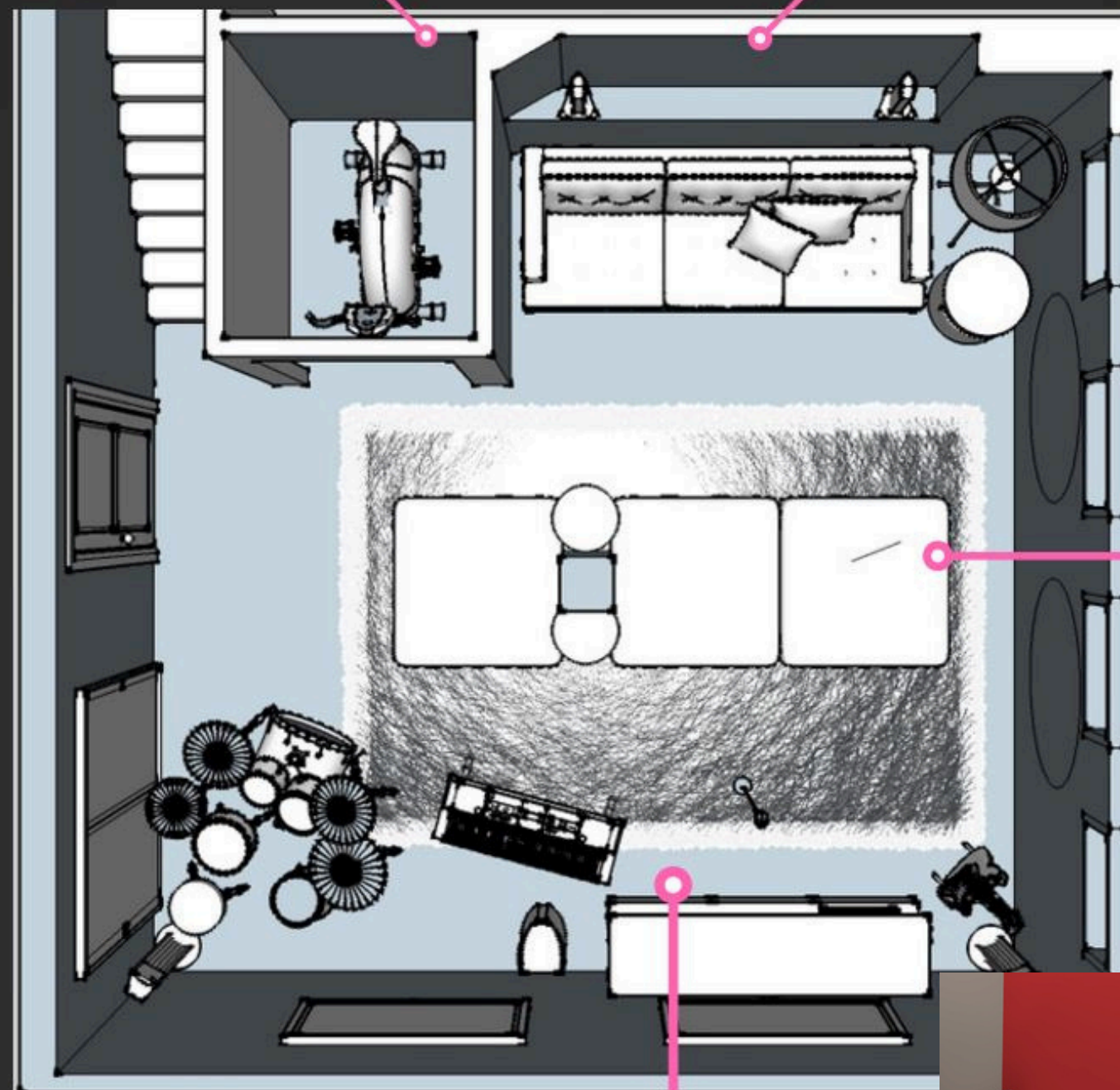
An extra closet is converted into a workout room to house existing gym equipment, custom lounge seating is built around the finished supporting beam to maximize seating, and wall graphics featuring favorite actresses and actors of the 70's era.

Some proposed finishes are neutral upholstered fabrics along with burgundy and plum wall colors.



Remove the existing closet door and relocate existing items and convert it into a workout room housing the stationary bike

Build up current ledge to support small furnishings and accessories and create custom icon decal graphic on wall.



Three upholstered ottomans offer a lounge approach to seating

Entertainment and Performance Area featuring drum set, piano, microphone, guitar, sound system and two large flat screen TVs.

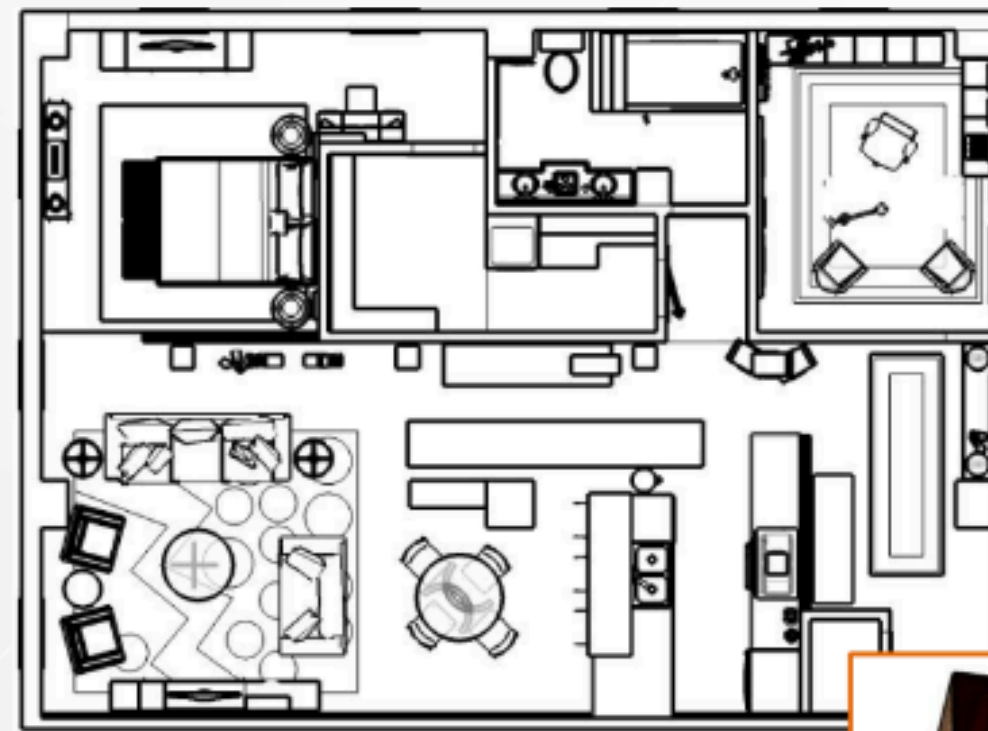
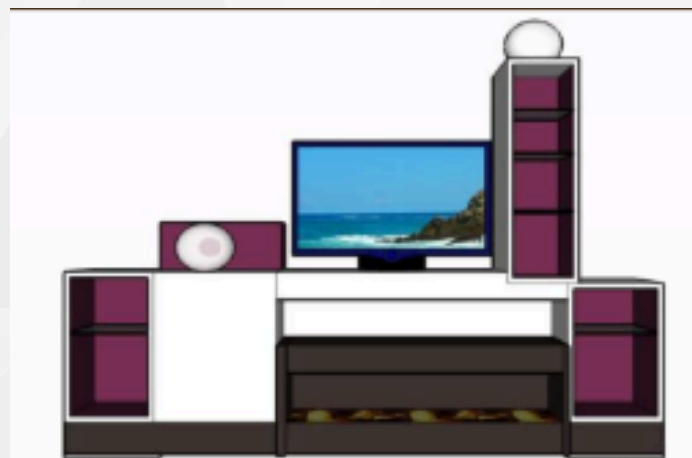


RESIDENTIAL DOWNTOWN LOFT REMODEL

This open loft space was in need of a delineation and designation of living spaces. Based on the owner's preference to brighten the space and exterior window locations, I proposed a grid delineation of space.

Daylight is minimal in this northeast corner unit of the building. This design proposal resolves this challenge by placing partitions and clearstory lites atop the center wall dividing the public and private living spaces.

The client requests a contemporary interior design solution with finishes requiring low to no maintenance.



MOVING SPACE REMODEL

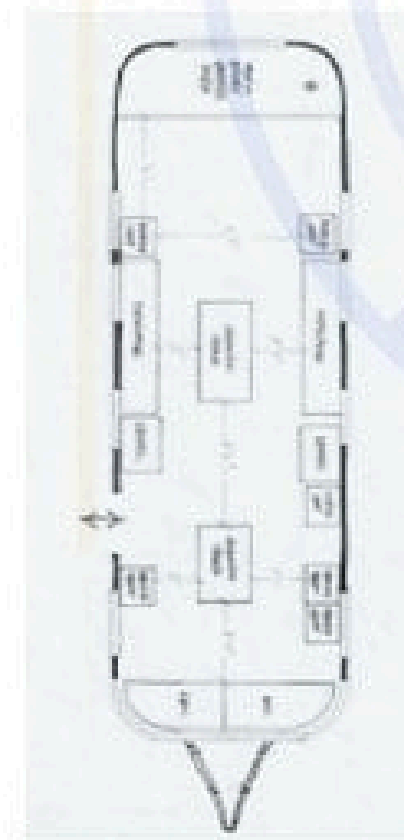
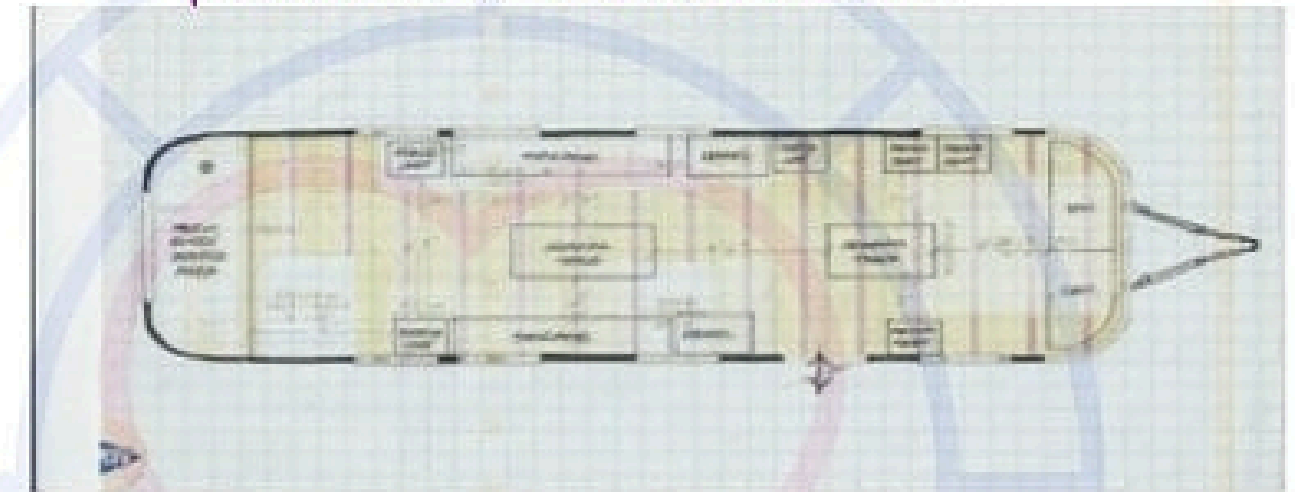
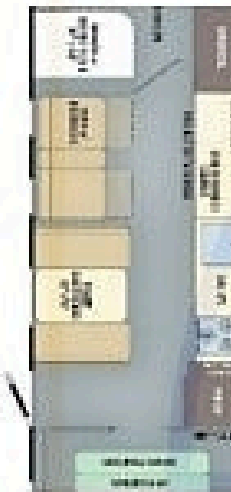
The classic Airstream RV is converted into a fully equipped mobile dog grooming space.

The dog washing area is at the rear, there are two grooming stations in the center, storage along the perimeter, and custom dog kennels serve as the waiting area at the entry.

Some of the proposed finishes to complete the design are pink and black mosaic glass tile, pink diamond textured sheet metal flooring, and custom tool chest storage.



Mom E.'s Time Out!



RESIDENTIAL LIVING ROOM REMODEL

A gallery living room was a challenge for a homeowner she asked me to help her with the space

The shower and dog washing area is at the rear, there are two grooming stations in the center, storage along the perimeter, and custom dog kennels serve as the waiting area at the entry.

Some of the proposed finishes to complete the design are pink and black mosaic glass tile, pink diamond textured sheet metal flooring, and custom tool chest storage.

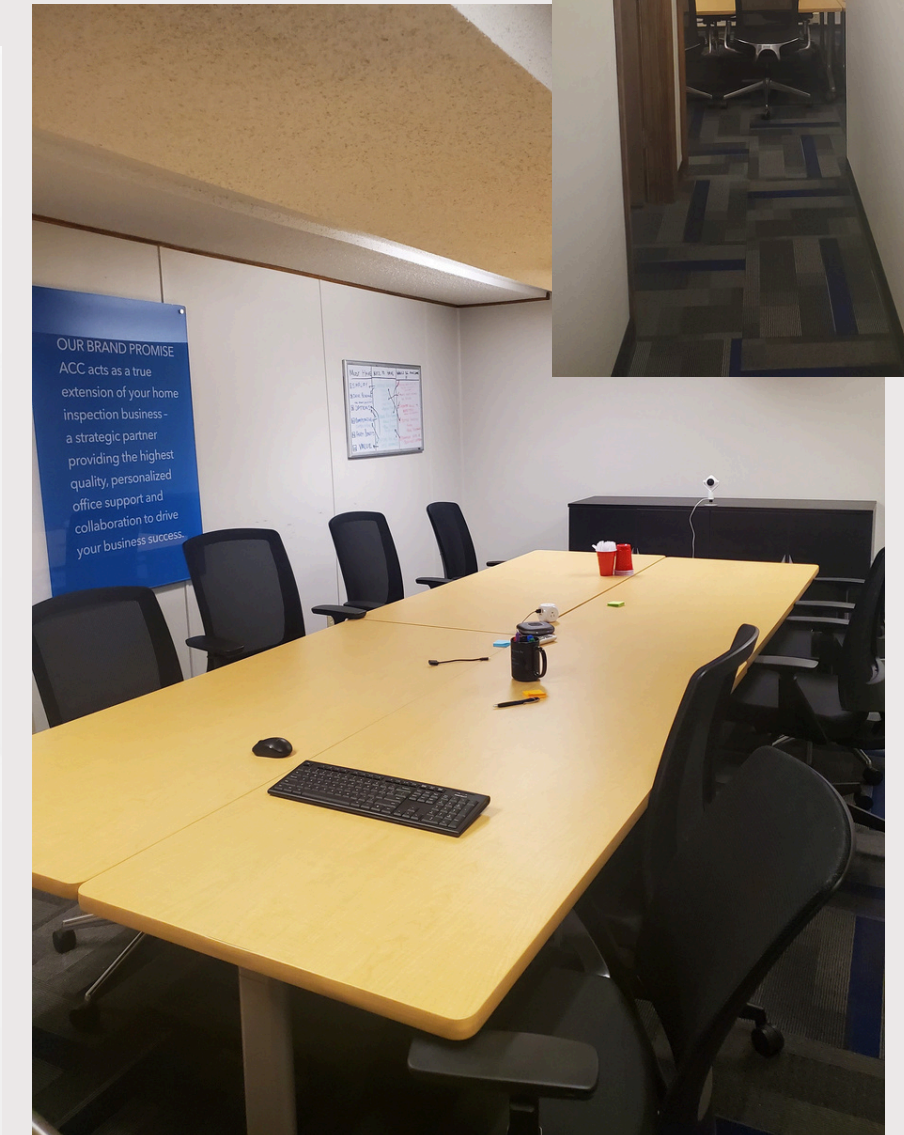
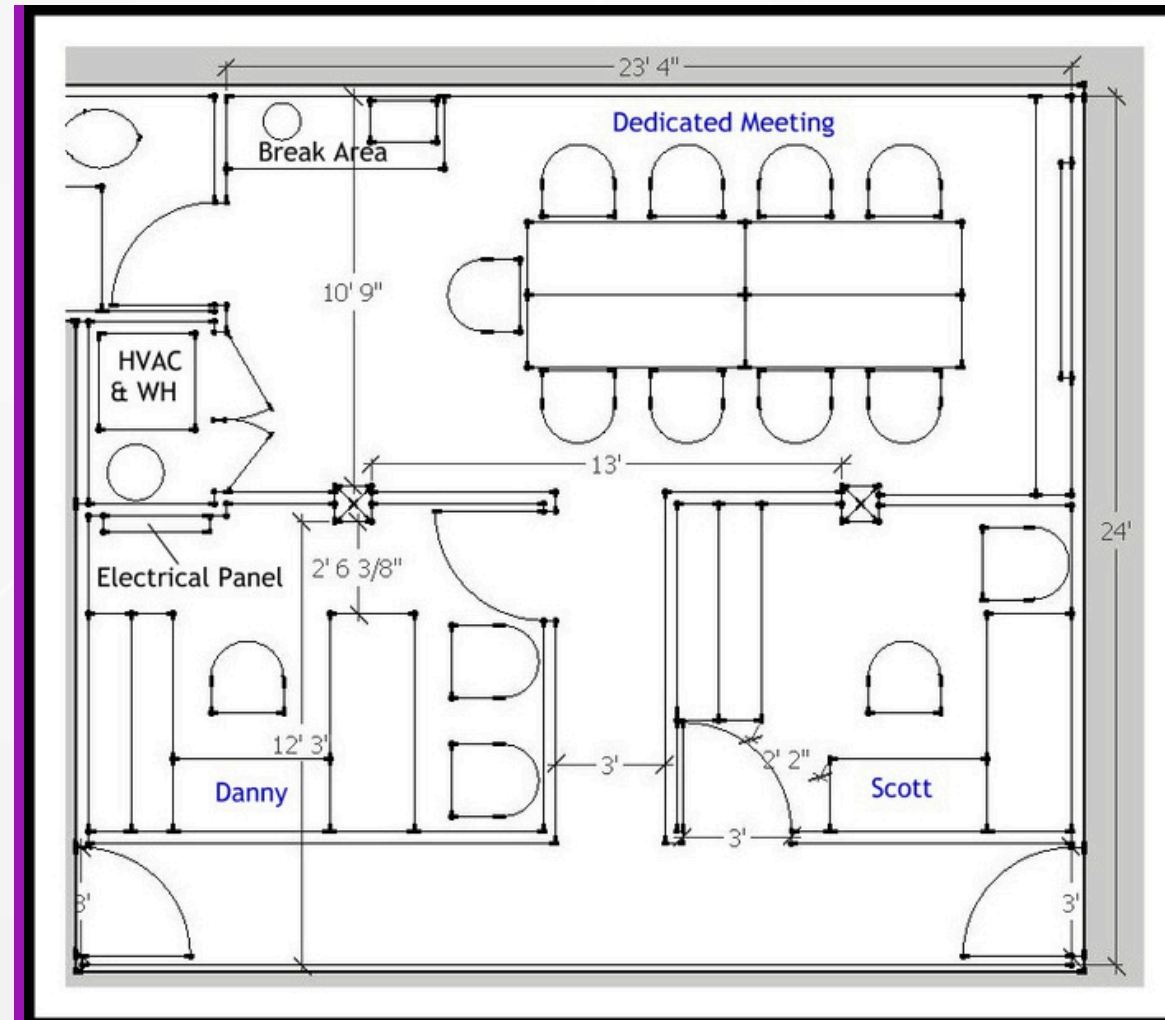
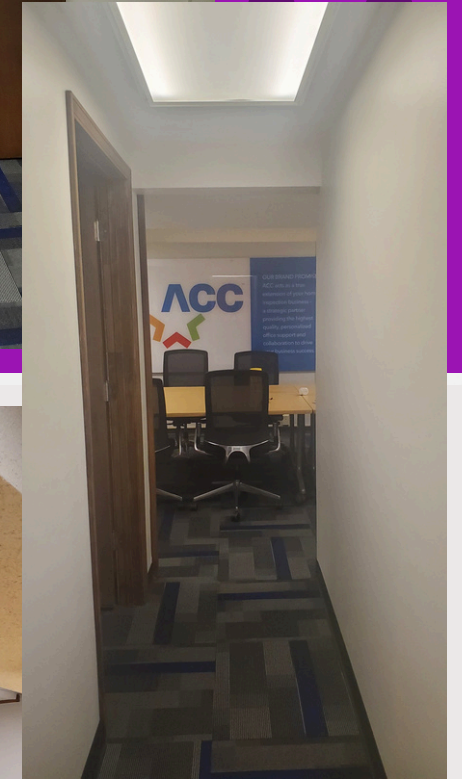
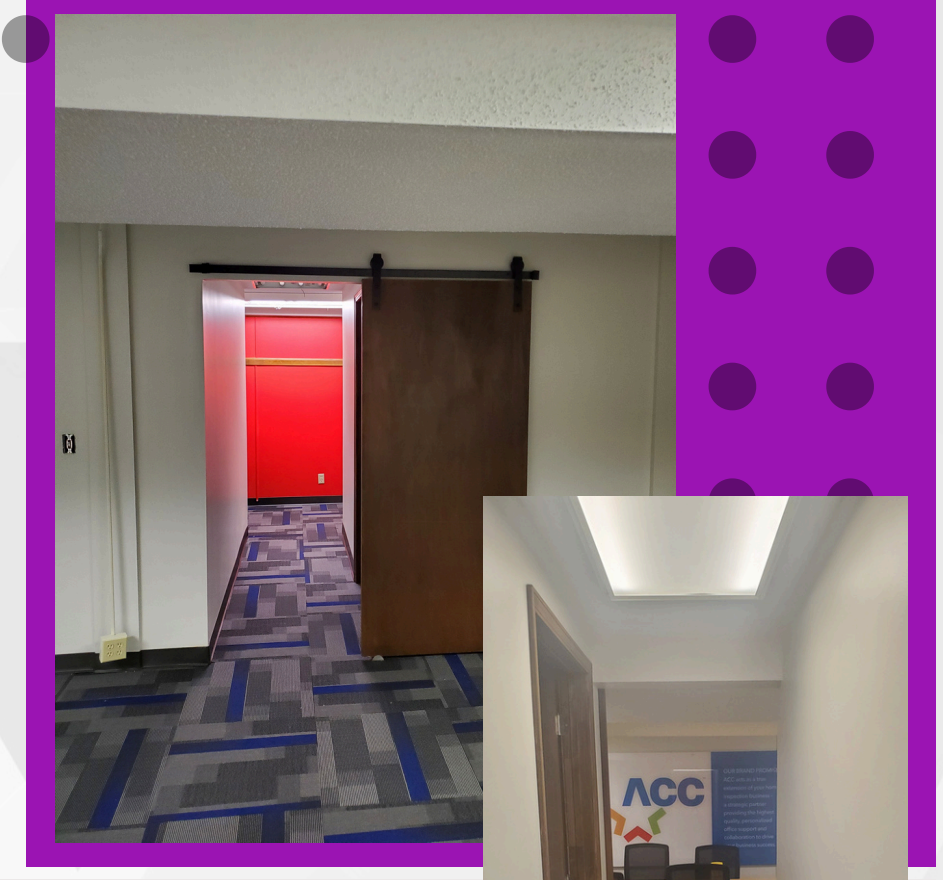


COMMERCIAL: PRIVATE OFFICES & MEETING SPACE

The existing space needed to be converted from an open office plan housing 10 cubicle desks to two private offices and one general common office meeting space.

The main challenge was designating space around load-bearing columns in the center of the room.

I proposed removing an unused closet and adding that square footage to one of the private offices and a hall to split the offices opening to the meeting room. This allowed for the office signage and brand colors to be positioned as features.



SPACE PLANNING

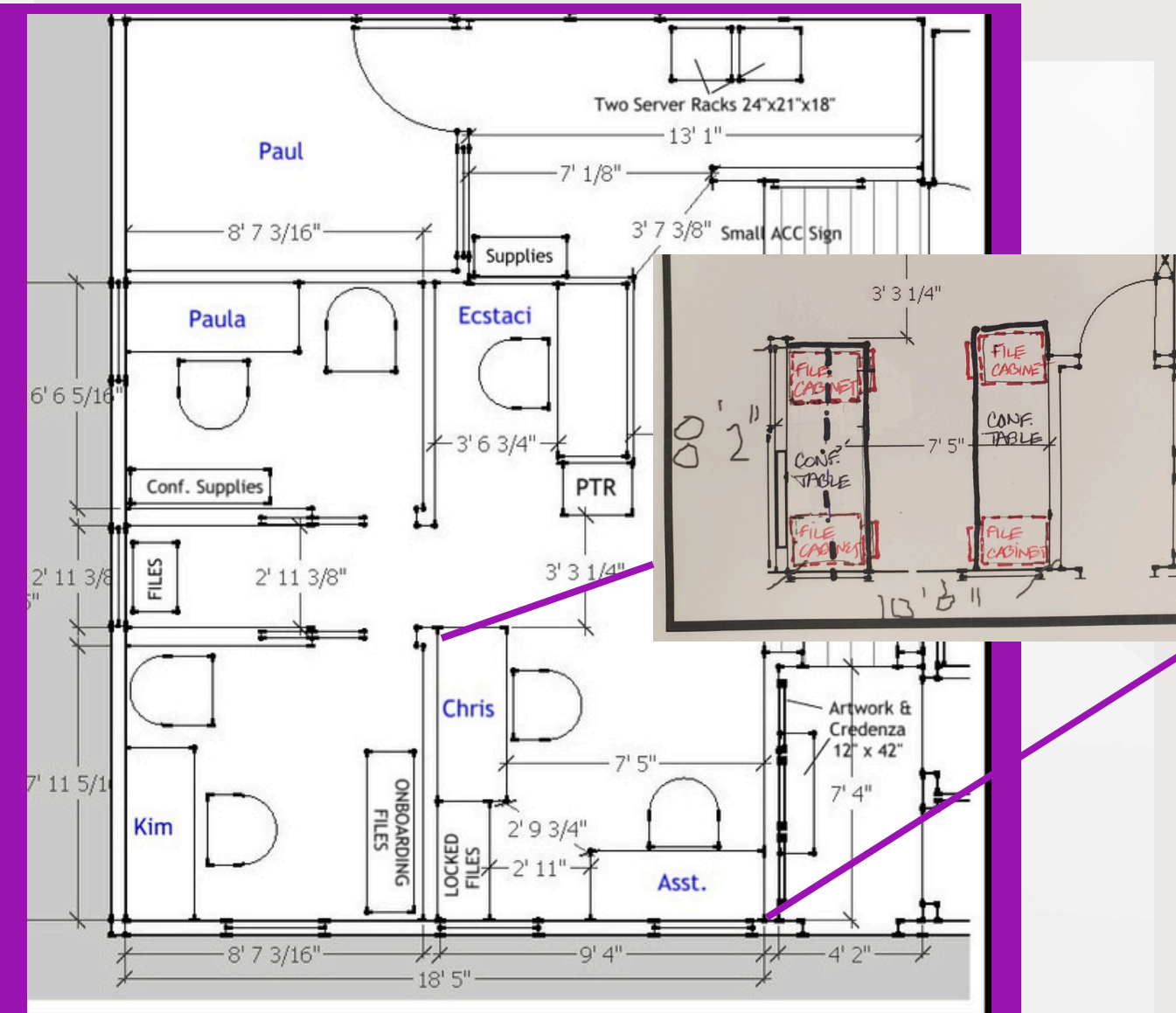
COMMERCIAL: PRIVATE & OPEN OFFICE SPACES

The existing open office plan housed seven cubicle desks and needed to be converted to two private offices and three desks in an open office plan.

Challenges were designating space evenly between two private offices, maintaining the integrity of an exterior window, and accommodating room for an open office plan.

I proposed installing office walls to meet just outside the window's interior frame to the extent of one foot before the existing wall in the space.

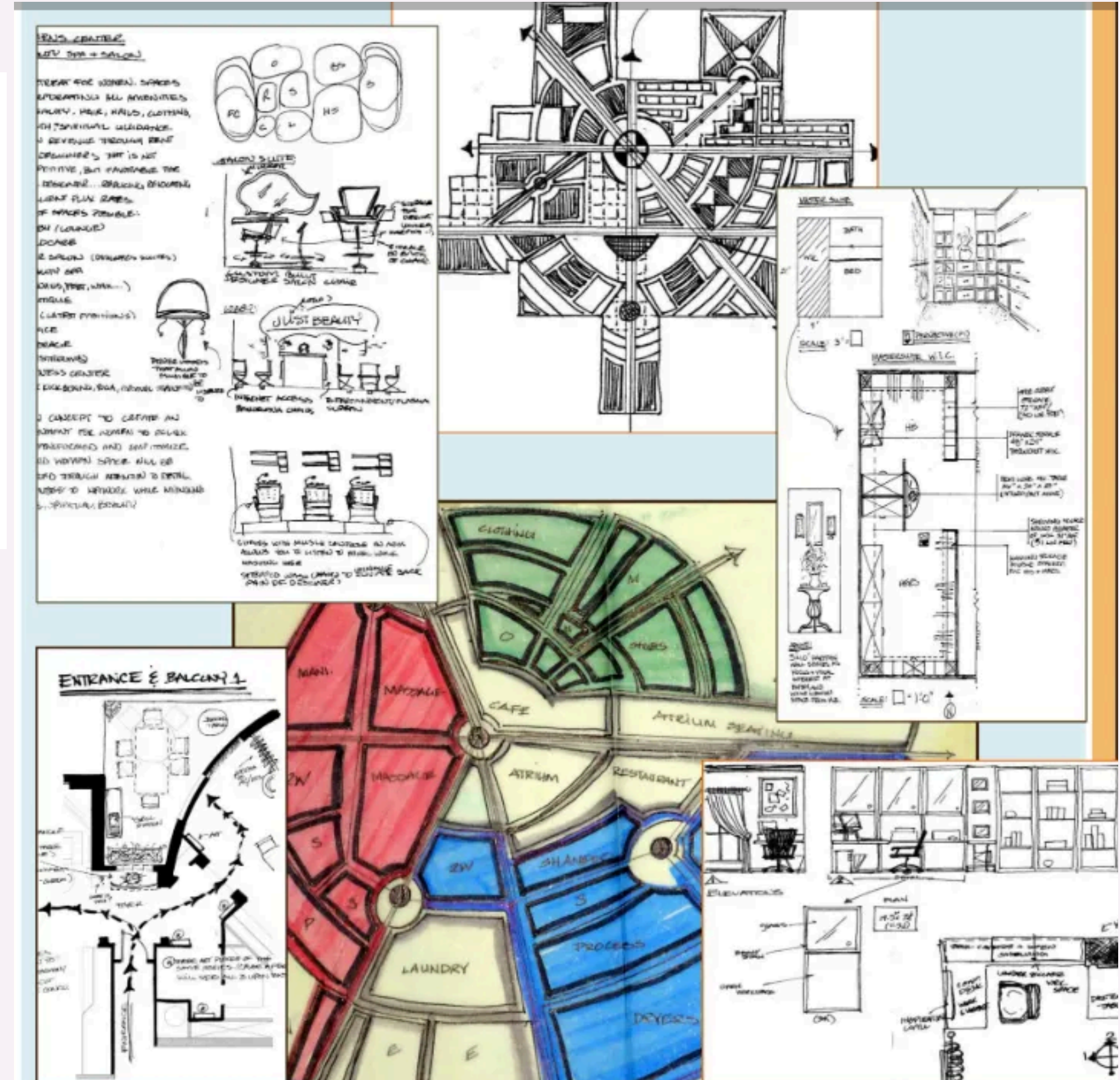
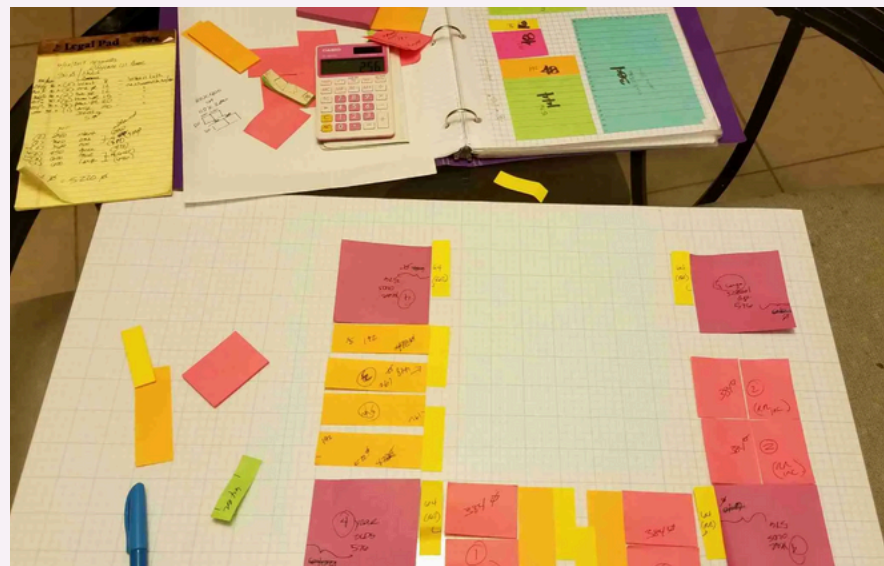
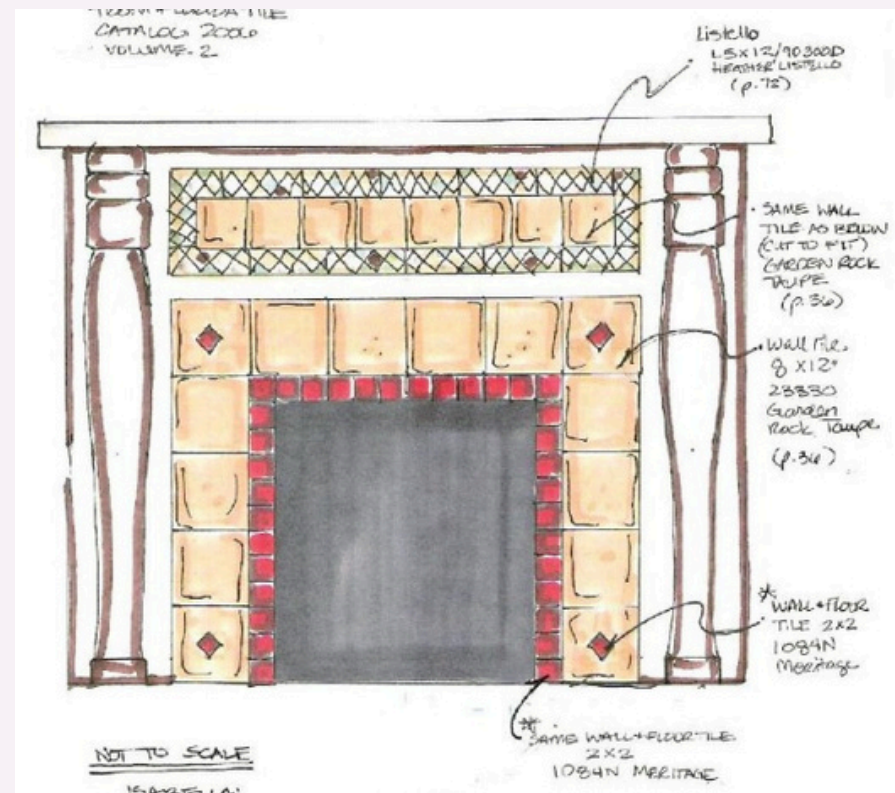
This allowed for three open office spaces and is in keeping with the theme to position office signage and brand colors as features.



CONCEPT & PROCESSES

PLANNING AND RENDERINGS

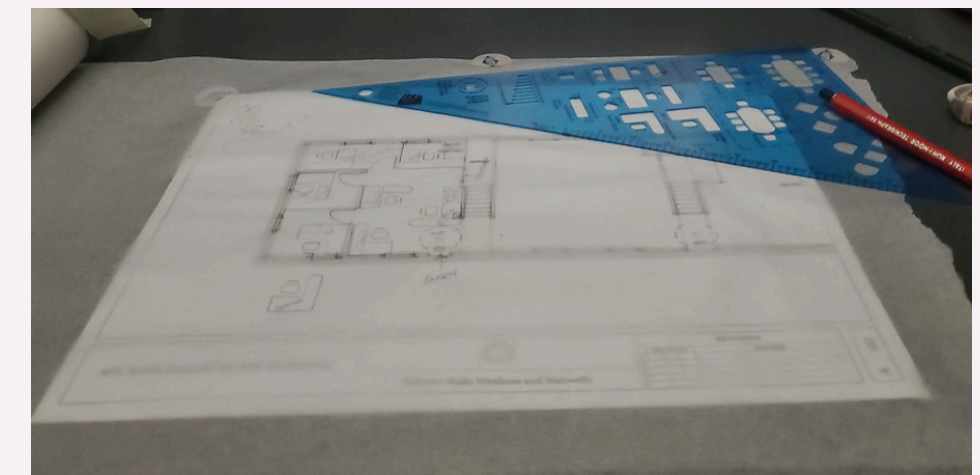
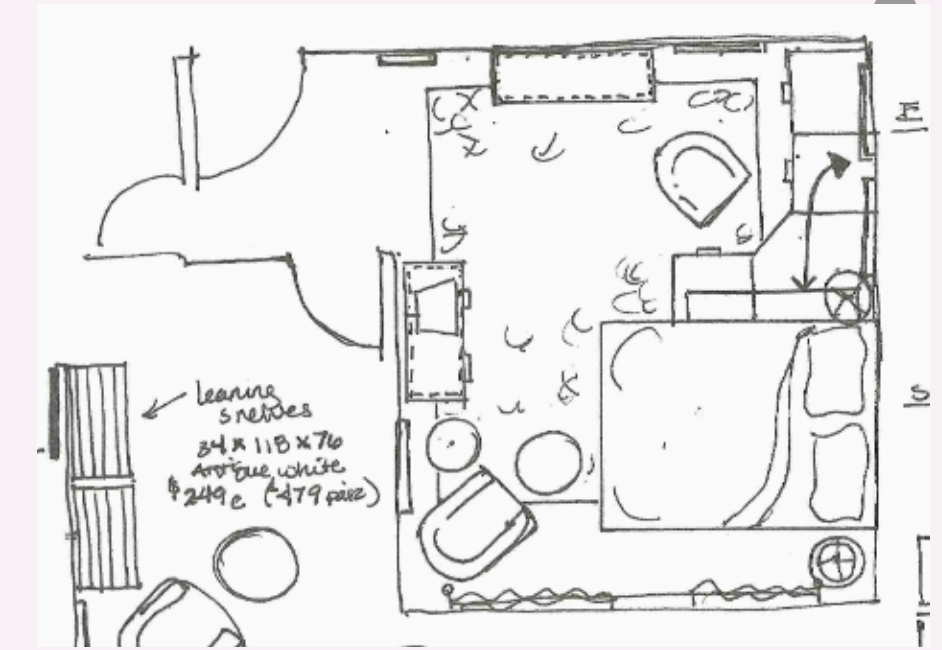
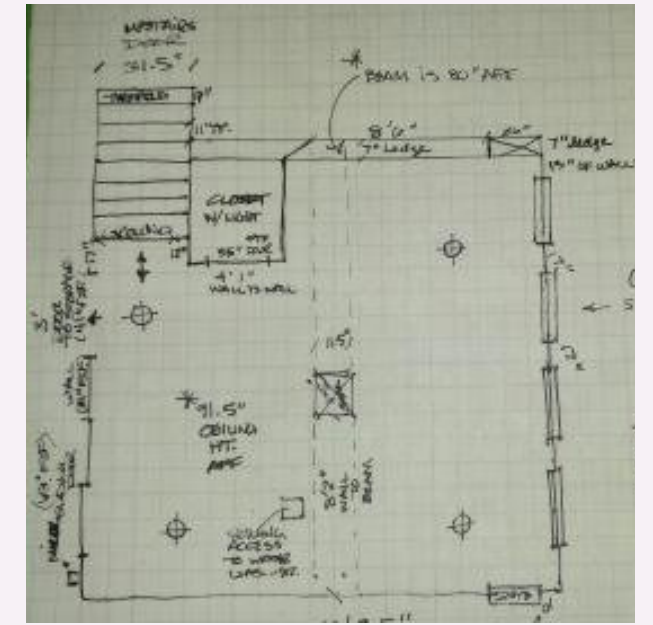
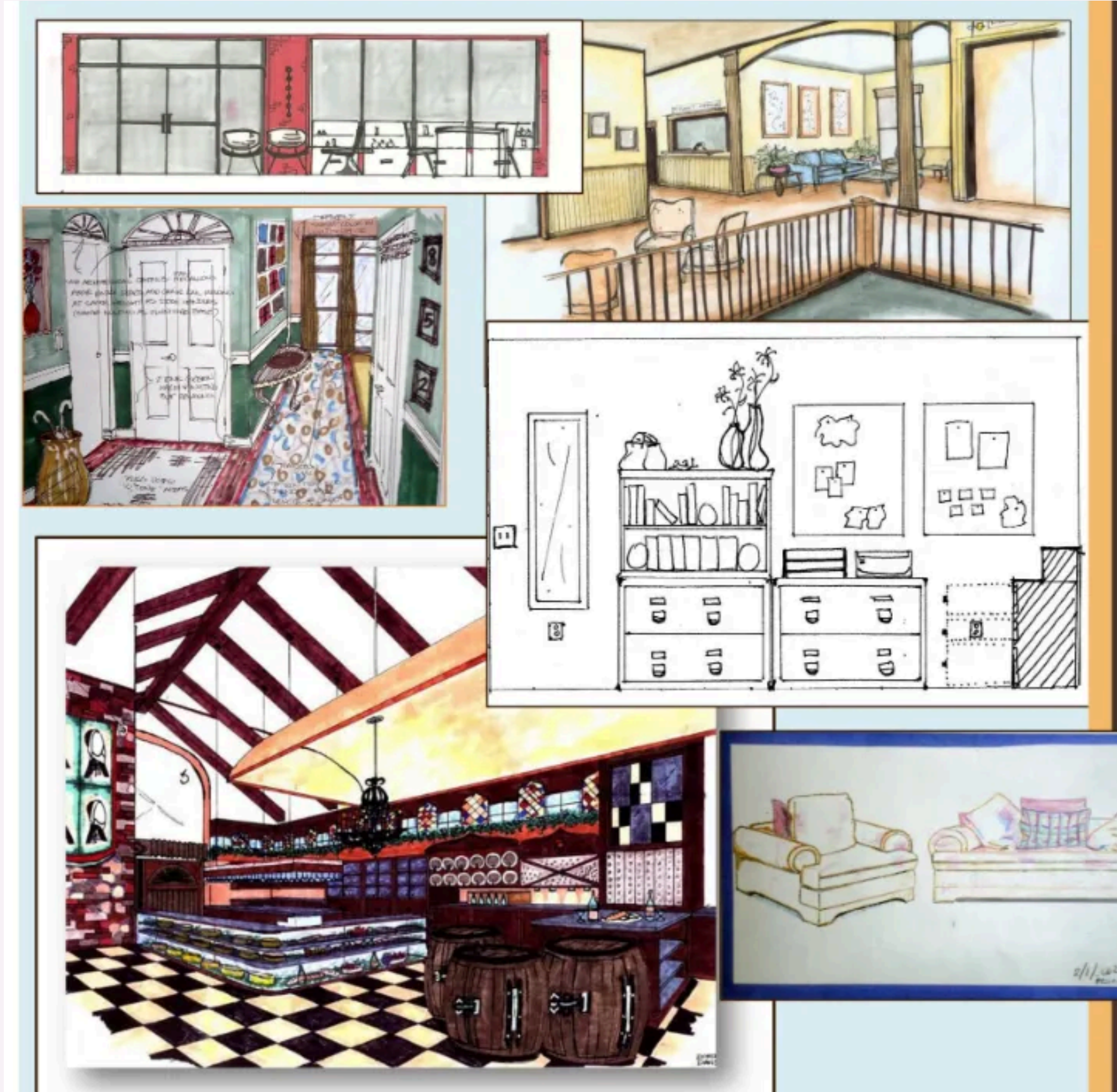
I am an extremely visual person and generally have an idea of how to approach design challenges that present themselves. However, I like to flush out the most viable solution by drawing relationships to the spaces. To ensure I come up with the best possible design solution.



CONCEPT & PROCESSES

PLANNING AND RENDERINGS

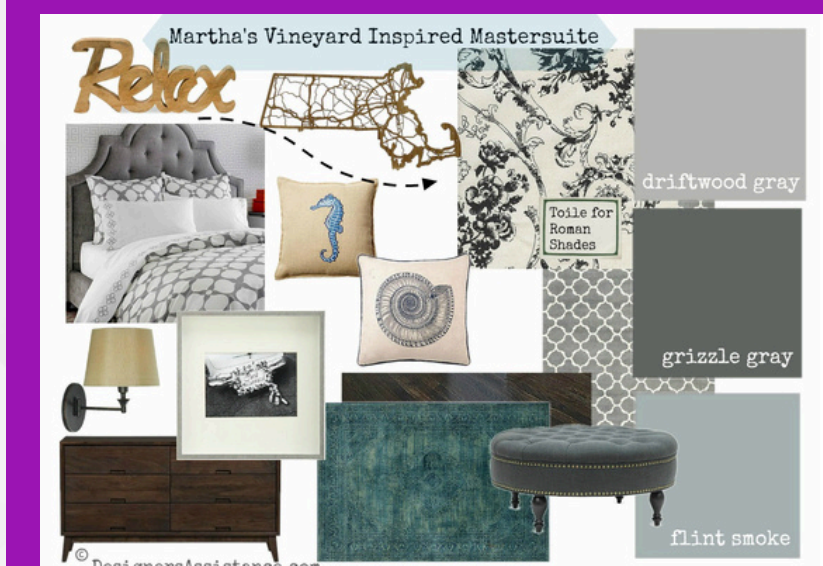
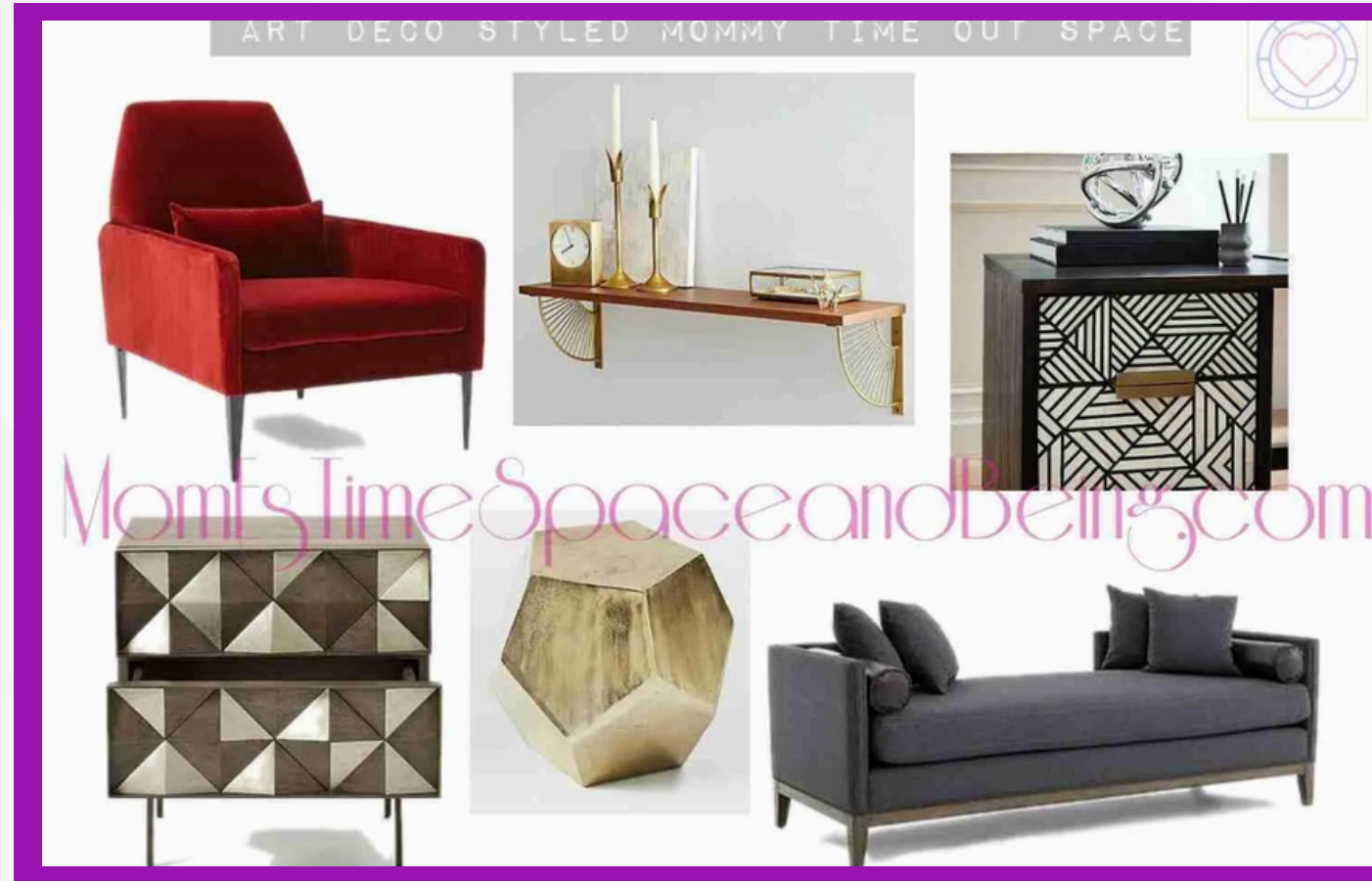
Renderings from a waiting area of a Salon, the second-floor foyer of an apartment building, a hall in a private residence, a home office, a restaurant, and furnishings.



MOOD AND THEME BOARDS

Another by-product of being an extremely visual person is truly appreciating all beautiful things and being constantly flooded with visual ideas.

Putting concept boards together serves as an outlet and proves how all elements of the design solution when pulled together with intention make a harmonious and beautiful piece of artwork. I love seeing the client realize this and make sure my presentations are impactful..



MOOD AND THEME BOARDS (CONT'D.)



Mood and Theme Boards
for a Designated Home
Office, and a Sola Salon
Space.



