

GDBNC NEWSLETTER

November 2025

1 Saleyard Road, Gelantipy, Victoria, 3885 ... Phone: 5150 2410/Fax: 5155 0217

Email: gdbnc@gha.net.au/Website: gdbnc.com.au

NURSE MANAGER: SUSIE EDWARDS ADMIN: ANN-MARIE DAVIES/TRISTAN DOOLEY

PRESIDENT, COMMITTEE OF MANAGEMENT (COM): DANNY MITTON

CONSUMER REPRESENTATIVE FOR COM: MARGIE ROGERS

OPENING HOURS: 9AM TO 3PM MONDAY TO THURSDAY (CLOSED PUBLIC HOLIDAYS)

LIBRARY BUS DATES

☒ November 11th 9-9.45am

☒ November 25th 9-9.45am



SHALL WE BE SOCIAL...

Gelantipy Hall Dinner

☒ Monday November 17th

☒ Monday December 15th



GDBNC MORNING TEA

Join us for a cuppa

Tuesday, November 25th

From 10am

After visiting Brent at the
Mobile Library Bus

Pathology November Dates

9 am to 10:30am

☒ Wednesday November 5th

☒ Wednesday November 26th

Diabetes Education..

A Diabetes Educator will be visiting
Buchan Bush Nursing Centre on

Monday December 8th

If you're living with diabetes, caring for
someone who is, or just want to learn more
about staying healthy, come along for a
chat & some helpful advice.

To book a time or find out more, please contact
Buchan Bush Nursing Centre on
03 5155 9222

The Centre will be **closed**
Tuesday November 4th for
Melbourne Cup Day

CHIROPRACTOR CLINIC

Chiropractic
appointments available
at the GDBNC
for Wednesday
November 19th

\$85 for new patients

\$55 for regular appointments
after that

Call the Centre to book your
appointment!

HELP AT HAND...



Ambulance 000

Poisons 13 11 26

Nurse-On-Call 1300 60 60 24

GP Helpline 1800 022 222



Don't forget the
Victorian Virtual

Emergency Department ...

WE ARE HERE
FOR YOU 24/7

visit vved.org.au



Remembrance Day 2025 10.30am Tuesday November 11th

This years service will be held at
The Hume Tree Tullock Ard Rd, Butchers Ridge.

Lunch will be available at the Gelantipy Hall
\$5pp Please book by
ringing 0427 586 038

Organised by the Gelantipy Hall Committee &
the Buchan South Avenue of Honour



Is your insurance up to date?

With summer just around the
corner, now is the perfect time to
check your insurance and make
sure everything is covered.

Use the handy calculator to make sure
you have enough cover & have thought
of everything.



New Support at Home Program – Starting 1 November 2025

From 1 November 2025, the new Support at Home program will begin, replacing the current Home Care Packages (HCP) & Short-Term Restorative Care (STRC) programs.

The updated program has eight care levels instead of four, making it easier to match the right level of support & funding to your individual needs.

You'll be assessed through the Single Assessment System & placed into a care level with a quarterly budget.

You may also be able to access short-term funding for:

- Assistive Technology – equipment & tools to help you stay independent
- Home Modifications – making your home safer & easier to live in
- Restorative Care – short-term help to get you back on your feet
- End-of-Life Care – support to remain at home with comfort & dignity

Your care provider will work with you to plan the right mix of services to suit your needs & lifestyle.

What Services Are Available–

Support at Home services are grouped into three main areas:

- Clinical Supports – nursing, physiotherapy, & occupational therapy
- Independence Supports – personal care, social connection, transport, & respite
- Everyday Living Services – cleaning, meals, home maintenance, & repairs

Costs and Contributions–

Some services will be fully funded, while others will have a small contribution based on your income & assets.

- Clinical supports will be free of charge
- Independence supports will have a moderate cost
- Everyday living services will have a higher contribution

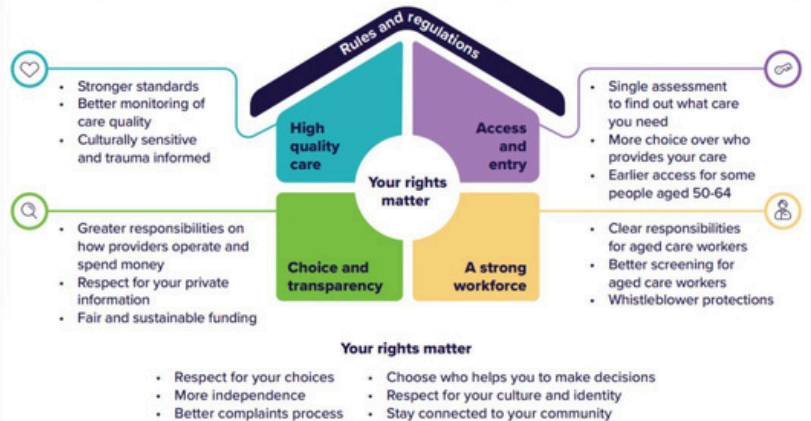
If you receive the Age Pension or hold a Commonwealth Seniors Health Card, you'll pay lower contribution rates.

Anyone currently on a Home Care Package will automatically move to the new Support at Home program, so there's no need to reapply.

Age Pension Status	Clinical Care	Independence	Everyday Living
Full Pensioner	0%	5%	17.5%
Part pensioner & eligible for Commonwealth Seniors Health Card	0%	Between 5% and 50% depending on income & assets	Between 17.5% and 80% depending on income & assets
Self-funded retiree	0%	50%	80%

The new Aged Care Act puts you at the center of your aged care

It will make aged care safer, fairer & more respectful. This infographic outlines the main parts of the new Act & how they work together.



Slip, slop, slap and wrap!

Remember to be SunSmart

SLIP
on a shirt with long sleeves and a collar

SLIP
into the shade of an umbrella or leafy tree

SLOP
on broad-spectrum, water resistant sunscreen of at least SPF 30

SLAP
on a hat with a wide brim

WRAP
on close fitting sunglasses that protect against UV radiation



The Gelantipy District Bush Nursing Centre would like to acknowledge the Traditional Owners of the land on which we gather, and pay our respects to their Elders both past and present



Bush Nursing Centre Inc

