



CIRRUS

Bridgetowne East

LIFE IS AWESOME
AT THE TOP



CIRRUS

Bridgetowne East

An oasis where you can stay
on top of your game

A development of
 **ROBINSONS LAND**
RESIDENTIAL DIVISION





CIRRUS

Bridgetowne East

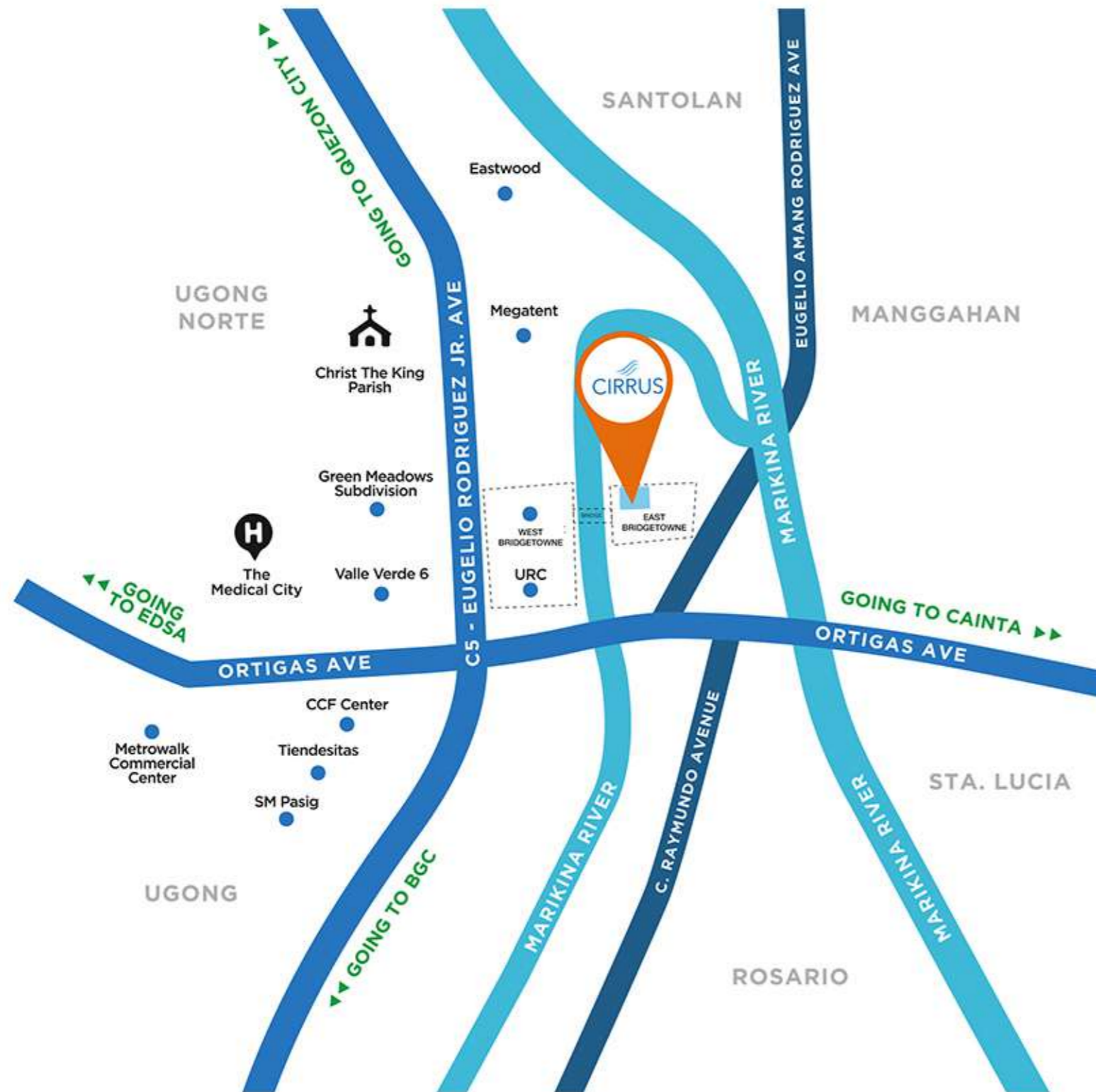
One central location so you can
rise above the rest



CIRRUS

Bridgetowne East

Enjoy the pinnacle of success
with our top flight amenities

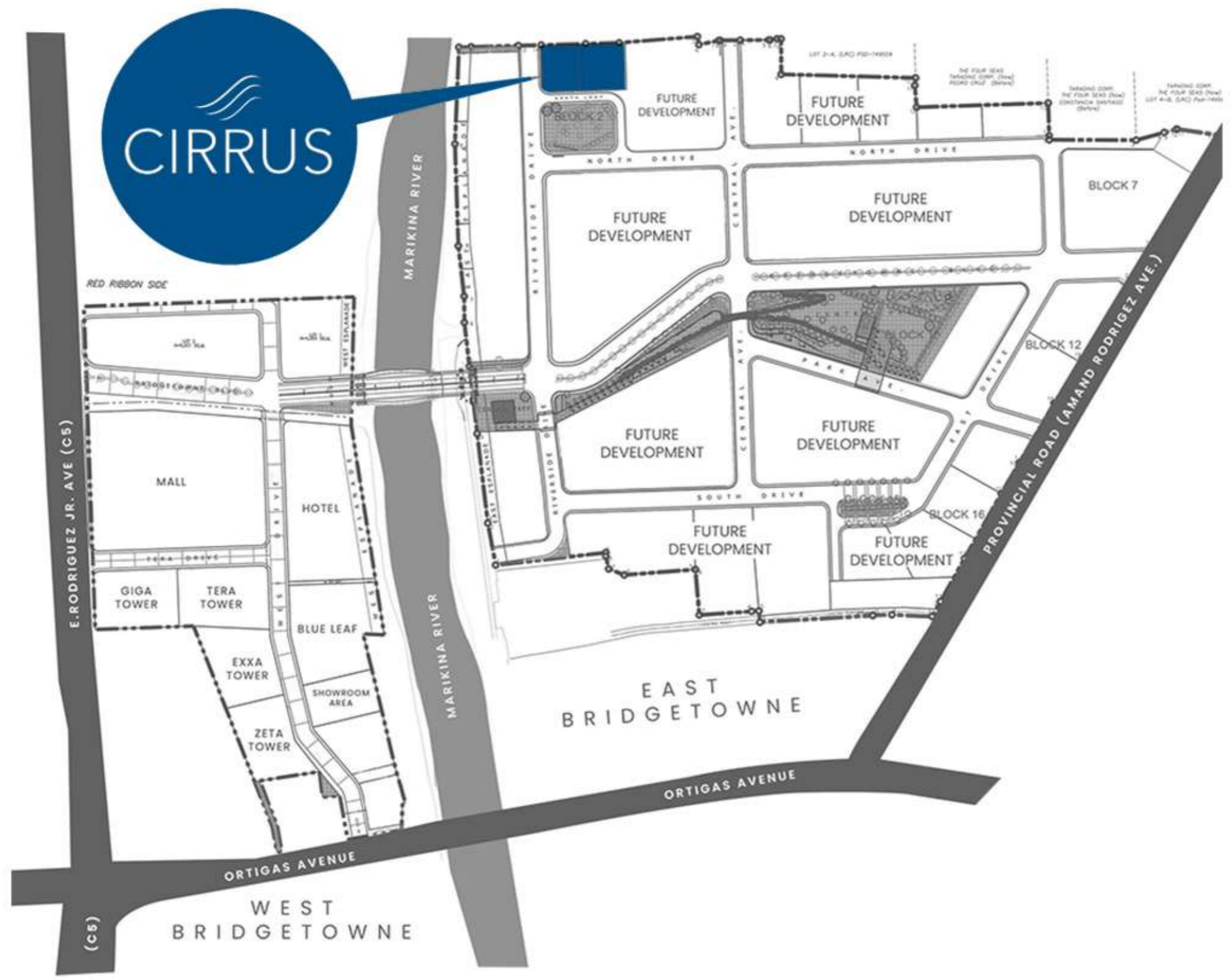


ALL THE ESSENTIALS WITHIN REACH

Cirrus towers over the spanking new Bridgetowne township, a sprawling riverside development complex master-planned by Robinsons Land.

It is also conveniently close to everything that you want in your life.

Libis, Ortigas, and BGC are just minutes away. Accessibility is also a major advantage, as it lies within proximity of major thoroughfares such as Ortigas Avenue and C5, making trips to key establishments – schools, universities, hospitals, malls, markets and more – feel quick and effortless.




Cirrus's immediate environs is a residential cluster, with a nearby community park. With easy access to Bridgetowne Boulevard, which links the east and west sections of the township, Cirrus gives you commanding access to Pasig and Quezon City.





RISE ABOVE MEGA MANILA'S MOST PROGRESSIVE TOWN

Bridgetowne is envisaged to be a destination town, with a mixture of high grade offices, a large retail complex with a 5-star hotel, event and leisure spaces, and sprawling parklands.



The architecture of the residential building is designed to be modern, nature-inspired residential setting, infused with abundant natural light and ventilation. The vertical lines shown on the mall's façade, accentuated with glass, louvers, and sky gardens, give the development a perfect balance of modernity and warmth.

Cirrus' features, from communal areas to your personal space, have been built-in to help ensure the success of your living, day in and day out.

Every effort is made to get high marks in sustainable living, with several features designed with the environment in

- ☀ Natural Light
- 🌀 Natural Ventilation
- 💡 Low-Flow Fixture
- 🌿 Energy Efficient

**PLANNED ACCORDING
TO YOUR EXACTING TASTE.**

Residential Floor 26th to 41st

Amenity Floor 24th to 25th

Residential Floor 8th to 23rd

Amenity Floor 7th

Podium Parking

Ground Floor





Lift Lobby

Drop off area

GLORY IN THE
HEIGHTS OF LEISURE



ENTRANCE LOBBY



AMENITIES AT THE 7TH FLOOR



AMENITIES AT THE 24TH FLOOR



AMENITIES AT THE 25TH & 41ST FLOOR

TYPICAL RESIDENTIAL FEATURES

- Entrance panel door with viewer
- Intercom per unit connected to the reception counter
- Automatic Smoke detectors and sprinkler system in all units

PROVISIONS

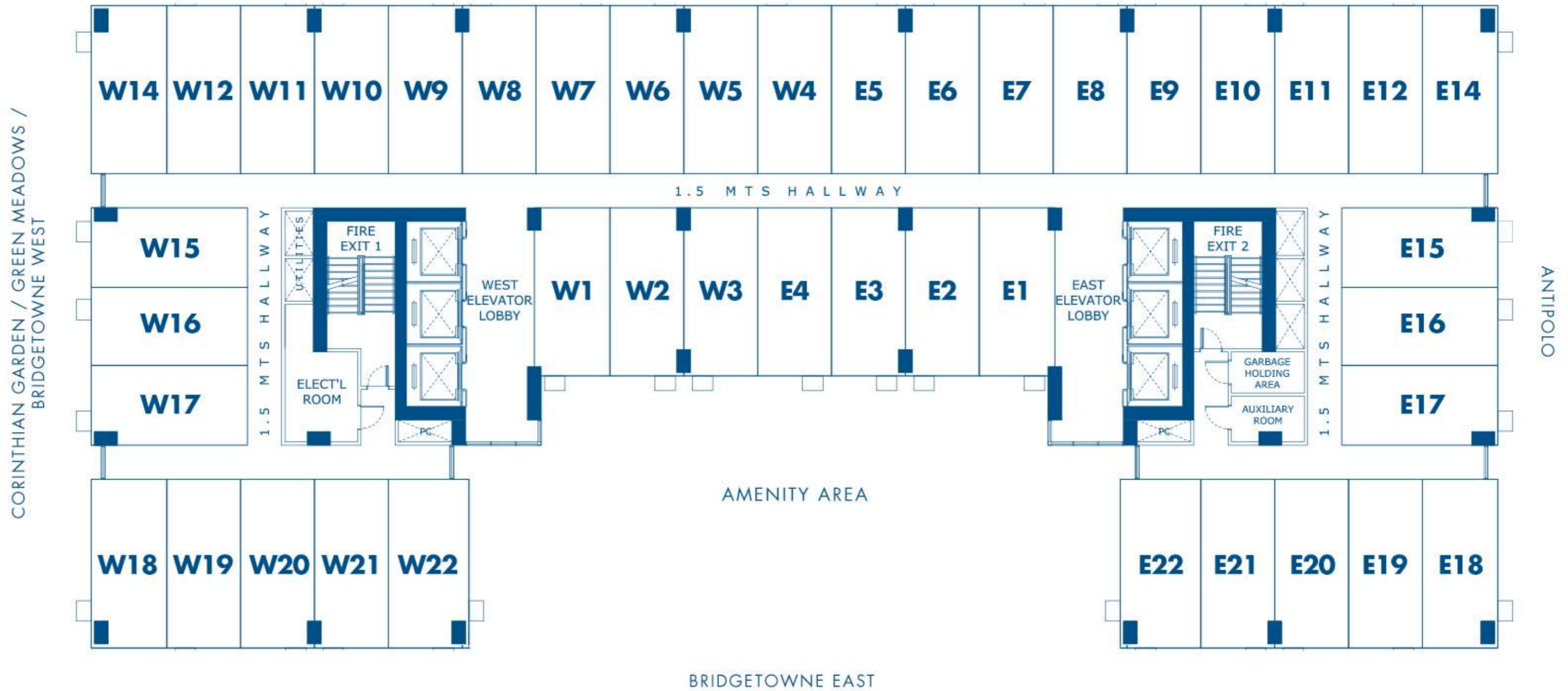
- Individual electric and water meter
- Telephone line at Living Area / Bedroom
- Cable TV line at Living Area / Bedroom
- Ventillation for kitchen and toilet
- Washer / Dryer provision for each unit (Washer / Dryer excluded)
- Hot water line (water heater excluded) at toilet shower
- Window type airconditioner at all units (Aircondition Unit excluded)

BUILDING FACILITIES AND SERVICES

- Main entrance lobby with reception counter
- CCTV monitoring on selected common areas
- Fire alarm system
- Annunciator panel and emergency speaker
- Water is supplied by elevated water tank and underground cistern
- Standby power generator for all common areas
- Standby power at selected outlets in residential unit as follows:
 - One (1) ceiling light for living/bedroom
 - One (1) convenience outlet for living/bedroom
 - One (1) convenience outlet for refrigerator
- Individual mail boxes
- Centralized garbage holding room
- Garbage holding area per residential floor
- Building administration office
- Security room
- Common drying area at roof deck
- Transformer and genset room
- Sewage treatment plant
- Two (2) fire exit stairs with well-lighted signages
- Conforming to fire code of the Philippines

RESIDENTIAL FEATURES

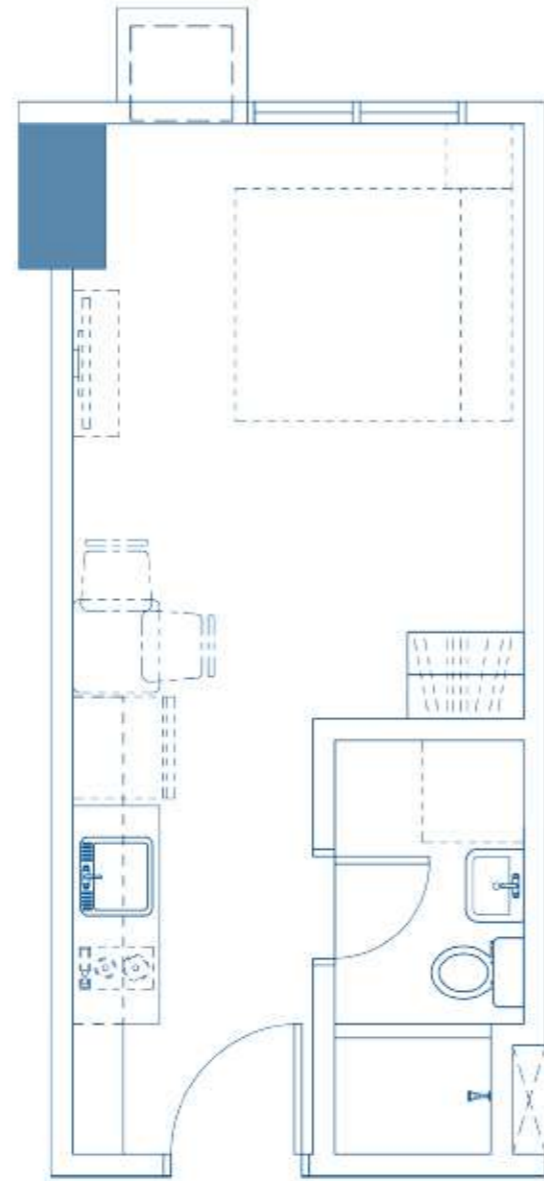
EASTWOOD CITY / PARKLINKS



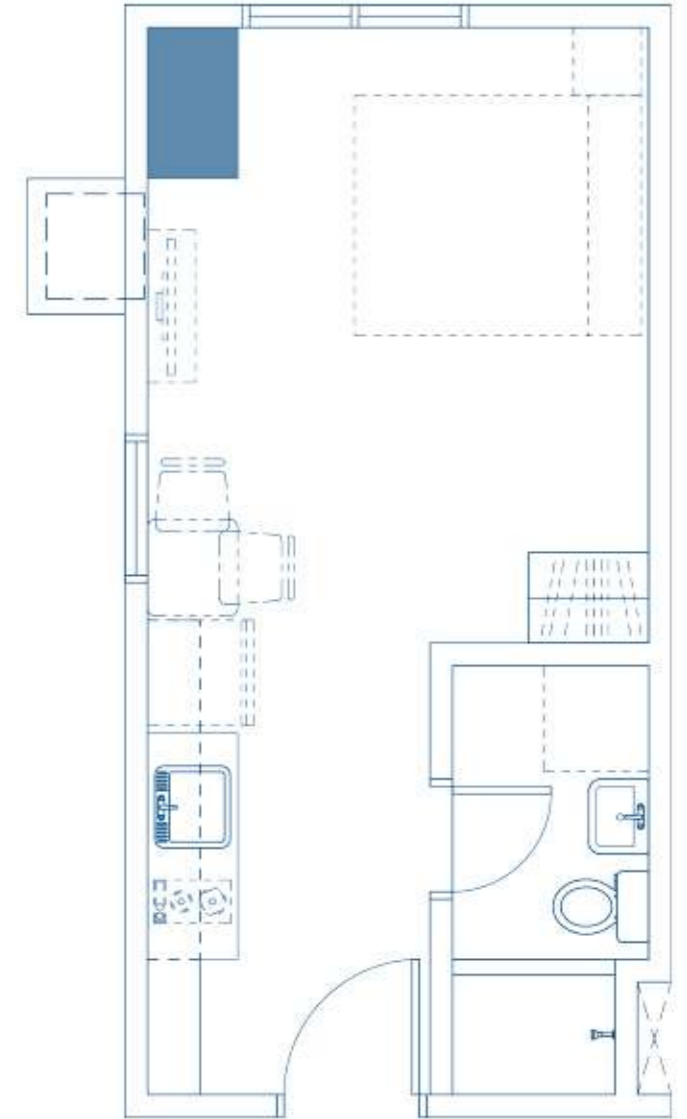
TYPICAL FLOOR PLAN

8th to 23rd floor & 26th to 41st floor

STUDIO UNIT A
24 sqm



STUDIO UNIT B
26 sqm (corner unit)



UNIT PLANS

RESIDENTIAL UNIT FINISH

Floor Finish

Living/Dining/Kitchen/Bedroom
Toilet and Bath

Wall Finish

Living/Dining/Kitchen/Bedroom
Toilet and Bath

Ceiling Finish

Living/Dining/Kitchen/Bedroom
Kitchen
Toilet and Bath

Homogenous Tiles
Homogenous Tiles

Painted Plastered Finish
Combination of Homogenous Tiles & Plastered Wall Finish

Painted Slab Soffit (no ceiling)
12mm Thk Moisture Resistant Gypsum Board Painted Finish
12mm Thk Moisture Resistant Gypsum Board Painted Finish

RESIDENTIAL UNIT DELIVERABLES

Bedroom Closet
Kitchen Countertop & Splashboard
Overhead Kitchen Cabinets
Undercounter Kitchen Cabinets
Lavatory/Water Closet
Electrical Outlet provision for Refrigerator
Electrical Outlet provision for 2 Burner Cooktop
Hot Water Line provision (excluding water heater)

Modular
Natural Stone
Modular
Modular
Wall-Mounted / Tank Type
350 watts
20 amp
3.5kW single point at T&B /Shower

UNIT FINISHES AND DELIVERABLES

A development of



ROBINSONS LAND
RESIDENTIAL DIVISION



Cirrus the latest development designed to elevate the lives of Filipinos is a masterpiece of real estate giant Robinsons Land Corporation, under Robinsons Communities.

With their steadfast commitment to providing homes that are built with impeccable quality and at the same time being affordable and realistically within reach of the Filipino, Robinsons Communities provides a space that cultivates a relaxed, freewheeling lifestyle for homeowners.

It is a company of JG Summit Holdings, Inc., one of the largest conglomerates in the Philippines, that ventures into manufacturing, airline, real estate, banking, and petrochemicals. As one of the country's leading developers, Robinsons Land Corporation has been instrumental in reimagining the potential of malls, hotels, office buildings, horizontal housing, and residential condominium developments.

