

create. communicate. collaborate.

.....
Palmieri Furniture Ltd.

1230 Reid Street
Richmond Hill
Ontario Canada L4B 1C4

T: 905 731 9300
F: 905 731 9878
TF: 800 413 4440

E: info@palmierifurniture.com
W: www.palmierifurniture.com

PALMIERI PALMIERI





Wave

Wave is a modern day carrel part of our P2 collection that allows individuals an independent, private working space. Each unit is exquisitely crafted in a wood veneer or frosted acrylic back, with the option of a courtesy shelf extension. Fully optimize user experience by adding a tabletop power bank and transform Wave to a universal element.

WAVE II DESK CARREL

Single & Double Face Acrylic, Bullnose or Multi-Ply Edge
STARTER

Widths : 38" & 50"
Depth : 32" & 62"
Heights : 29"/37"

Single & Double Face Acrylic, Bullnose or Multi-Ply Edge
ADDER

Widths : 36½" & 48½"
Depth : 32" & 62"
Heights : 29"/37"

Single Face Acrylic, Bullnose or Multi-Ply Edge
2 PLACE - SIDE BY SIDE

Widths : 74" & 98"
Depth : 32"
Heights : 29"/37"

Double Face Acrylic, Bullnose or Multi-Ply Edge
4 PLACE - BACK TO BACK

Widths : 74" & 98"
Depth : 62"
Heights : 29"/37"

Carrel units have a 1/2" thick frosted acrylic back. Brushed stainless steel acrylic to post mount hardware.

Pole extension with courtesy shelf is available as well as optional wood back panels to replace the frost back panel that comes standard with each unit.

WAVE III DESK CARREL

Single & Double Face Acrylic, Bullnose or Multi-Ply Edge
STARTER

Widths : 38" & 50"
Depth : 27¾" & 53¾"
Heights : 29"/36"

Single & Double Face Acrylic, Bullnose or Multi-Ply Edge
ADDER

Widths : 36½" & 48½"
Depth : 27¾" & 53¾"
Heights : 29"/36"

Single Face Acrylic, Bullnose or Multi-Ply Edge
2 PLACE - SIDE BY SIDE

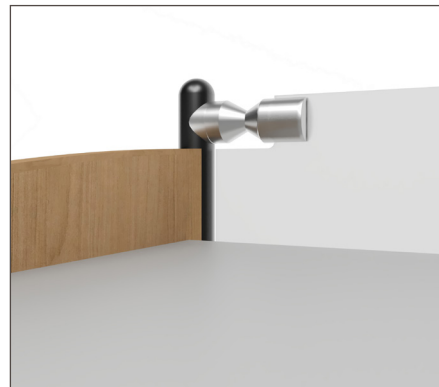
Widths : 74" & 98"
Depth : 27¾"
Heights : 29"/36"

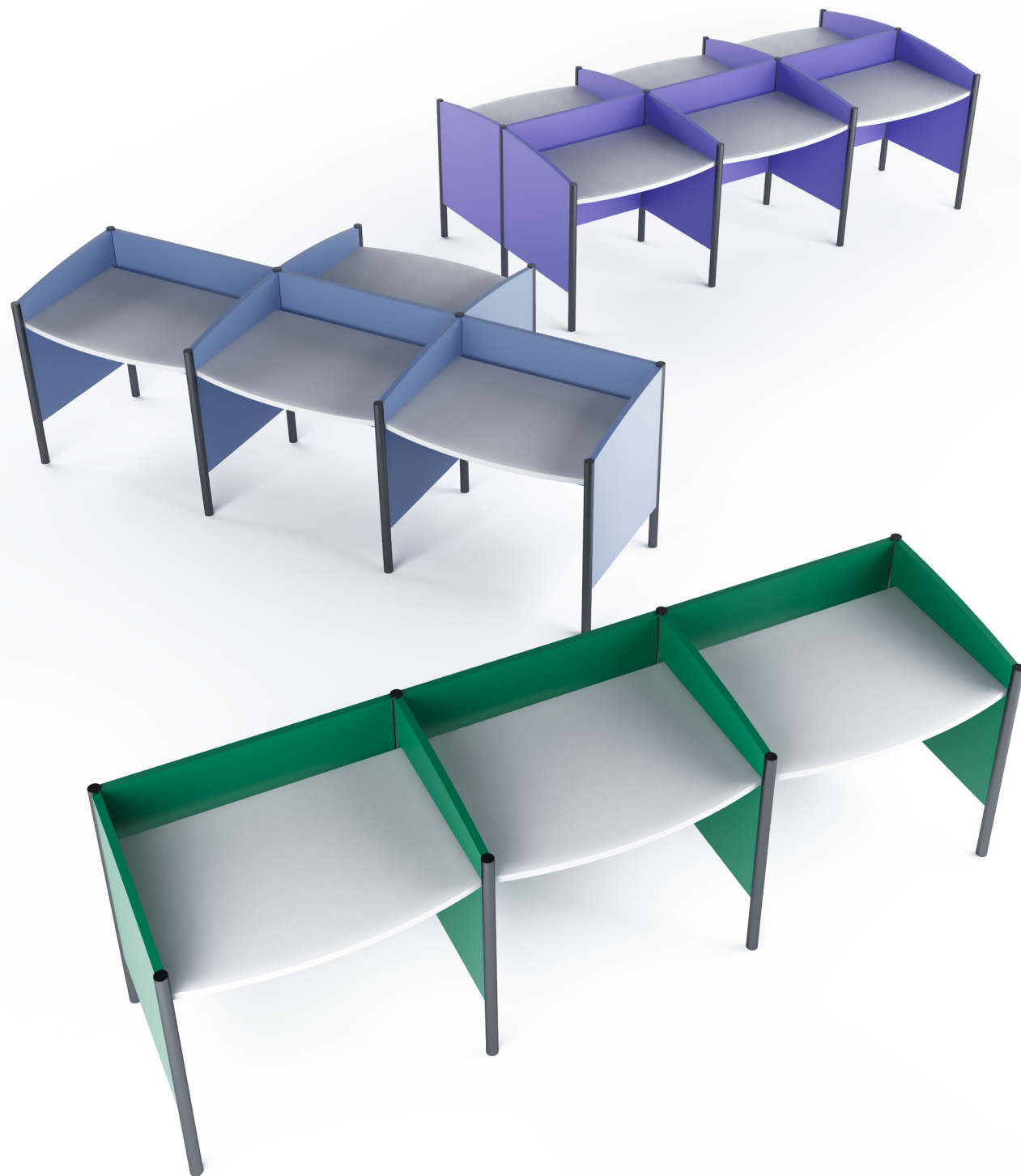
Double Face Acrylic, Bullnose or Multi-Ply Edge
4 PLACE - BACK TO BACK

Widths : 74" & 98"
Depth : 53¾"
Heights : 29"/36"

Carrel units have a 1" thick veneer back instead of acrylic, with brushed stainless steel posts.

Pole extension with courtesy shelf option is also available for this unit.





ACCESSORIES



A HELPING HAND

Open up your work space by adding Palmieri's Wave shelf extension! Utilize every inch of this desks surface area while having a coffee cup, water bottle, purse or bag within reach. This add on is available in Frosted Acrylic or Oak/Maple wood.

Visit www.palmierifurniture.com for more information.

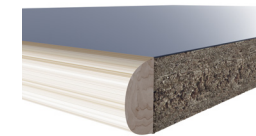


ADD SOME POWER

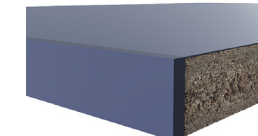
Eliminate tripping hazards with Palmieri's flip up power bank. Perfect for independant work spaces, this easy access outlet is the ultimate accessory extension for Wave!

Visit www.palmierifurniture.com for more information.

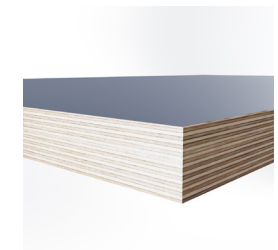
EDGES



BULLNOSE



ACRYLIC



MULTI-PLY

PAIR WAVE WITH...

Nest is a sleek polypropylene chair reinforced with fiberglass for superior quality and support. It is ergonomic, high-density and multipurpose. Its ability to stack up to 45 chairs tall in under 7 feet, provides a space-saving solution. Add a removable tablet arm and book basket for learning environments, or pair with the bar stool to fit other spaces.



RESOURCES

HOW TO BUY FROM PALMIERI

Palmieri has a nationwide dealer network with partners located across the United States and Canada that can assist you with product selection, purchase and installation. If you would like to locate a Palmieri authorized dealer or representative in your area, please contact our Customer Service team at **1-800-413-4440** or email us at info@palmierifurniture.com.