

PALLETTI



VENUE
S H E L V I N G



Standard



The Venue shelving system is a fundamentally dependable solution for any library, educational, storage and filing space. This shelving collection is mainly constructed with an open metal framework and the option to add acrylic end panels is available. It is aesthetically unique in design and function, to match the interior style and needs of its users.

SINGLE & DOUBLE FACE TOP OPTIONS

Top Crossbar/Middle & Base Crossbars



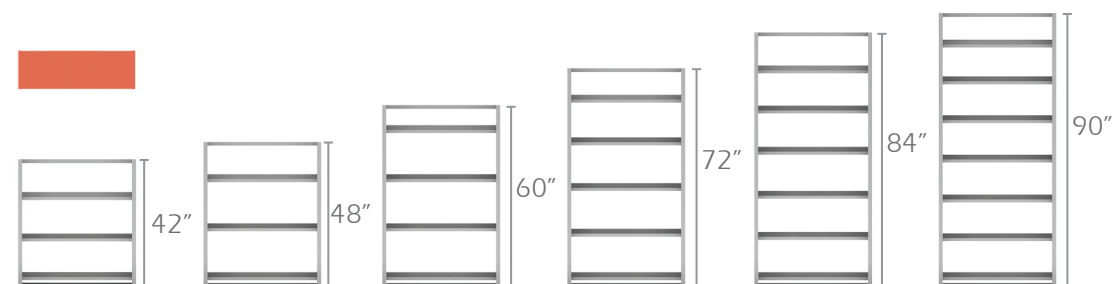
BOTTOM OPTIONS

Metal Mobile Bottom Frame



STANDARD HEIGHT OPTIONS

Both Single and Double face units are available in the standard heights shown.



It is built with various parts and components, according to the specifications. This can support loadings of approximately 45 lbs. per shelf and linear feet. Its weight capacity will vary depending on the unit's dimensions and number of shelves. Each shelving system can be made as a Single or Double Face unit with adjustable shelves in order to meet the user's needs and demands.



one of a kind

shelving

VENUE MODELS & ACCESSORIES

Standard



Width: 42 1/2" & 48 1/2"
Shelf Depth: 9 1/2", 11 1/2", 14"



Width: 60 1/2"
Shelf Depth: 9 1/2", 11 1/2", 14"



Width: 72 1/2"
Shelf Depth: 9 1/2", 11 1/2", 14"



Width: 84 1/2"
Shelf Depth: 9 1/2", 11 1/2", 14"

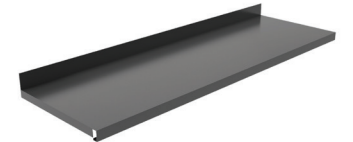


Width: 90 1/2"
Shelf Depth: 9 1/2", 11 1/2", 14"

Shelf Options (Can accommodate up to weight load of 45lbs. per sq.ft)



Slotted Metal Shelf
Width: 23 1/4", 29 1/4", 35 1/4"
Depth: 9 1/2"



Low Back Metal Shelf
Width: 23 1/4", 29 1/4", 35 1/4"
Depth: 9 1/2", 11 1/2"

Magazine Shelf



Width: 42 1/2" & 48 1/2"
Shelf Depth: 11 1/2"



Width: 60 1/2"
Shelf Depth: 11 1/2"



Width: 72 1/2"
Shelf Depth: 11 1/2"



Width: 84 1/2"
Shelf Depth: 11 1/2"



Width: 90 1/2"
Shelf Depth: 11 1/2"

Accessories (Recommended options, but not limited to)



Top & Base Crossbar



Kick Plate

End, Mid & Back Panels

Both Single and Double face units are built with open end panels that allow for acrylic inserts - which are sold separately. Please contact us for acrylic insert options available for purchase.



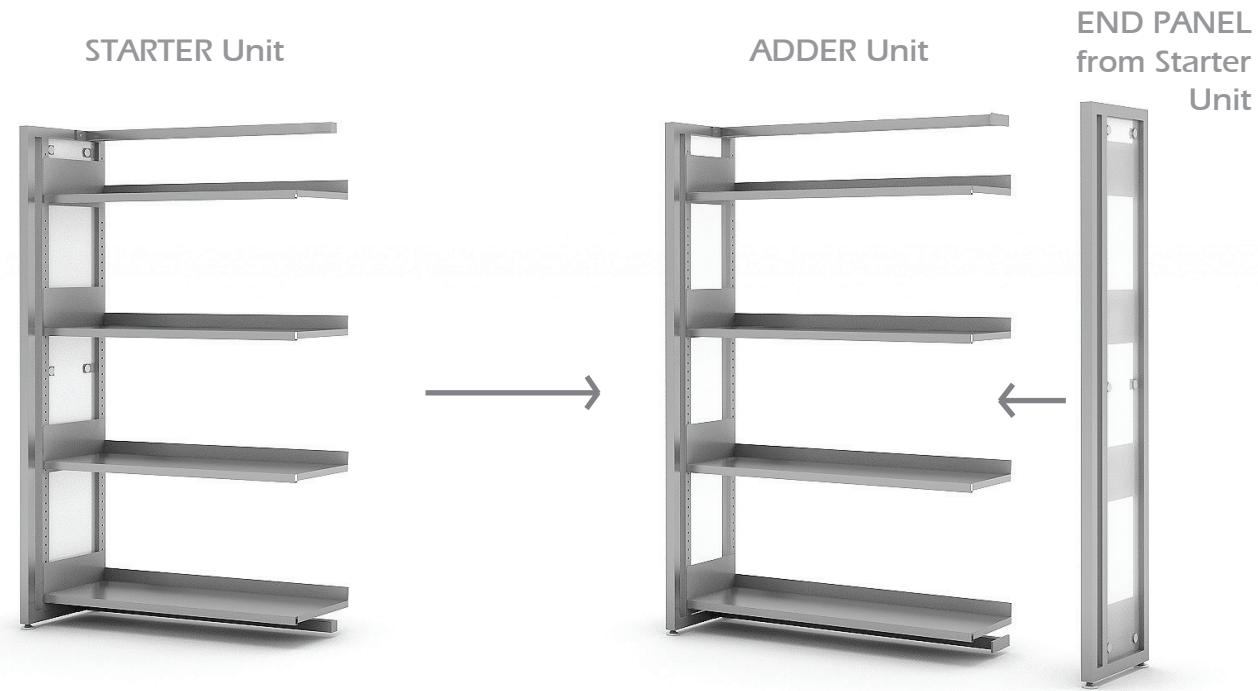
Single Face



Double Face

STARTER/ADDER PROGRAM & HOW TO ORDER

The Venue Shelving Starter and Adder program provides the ordering guideline based on the requirements of the order, while maximizing the use of space and budget available.



Begins with the selection of a starter unit, as a single face or double face starter model. Followed by choosing the adder model that matches the specs of the starter model of the same height, depth and width for additional bays in any shelving run. One mid panel is included with every adder unit. The end panel from the starter unit will go at the end of the shelving run. See illustration above for reference. For more details and options, consult your sales representative before placing an order.



Single face units must rest against a wall and/or be anchored to the floor or ceiling.

Double face units may be freestanding and placed in the center of a room.

PLANNING GUIDE

The most common way to calculate book capacity is on a linear feet basis. A common average for public and school libraries is 9.6 books per linear feet. For children's section capacity in both elementary schools and public libraries this may be raised to 16.3 books per linear feet. The shelving capacity for academic libraries is commonly averaged to be 8 books per linear feet. Based on a 36" wide shelving unit, a per shelf capacity of 29 adult, 49 children, and 24 academic books can be established.

Venue shelving is available in 6 standard heights: 42", 48", 60", 72", 84", and 90"; 3 standard widths: 24", 30", and 36" in both single face and double face depths.

Shelving Height	Number of Shelves (adjustable and base)	Adult Book Capacity/Unit			Children Book Capacity/Unit			Academic Book Capacity/Unit		
		24" W	30" W	36" W	24" W	30" W	36" W	24" W	30" W	36" W
42"	3 Shelves (2 adjustable and 1 base)	57	72	87	99	123	147	48	60	72
48"	3 Shelves (2 adjustable and 1 base)	57	72	87	99	123	147	48	60	72
60"	4 Shelves (3 adjustable and 1 base)	76	96	116	132	164	196	64	80	96
72"	5 Shelves (4 adjustable and 1 base)	95	120	145	165	205	245	80	100	120
84"	6 Shelves (4 adjustable, 1 fixed and 1 base)	114	144	174	Height not recommended			96	120	144
90"	7 Shelves (5 adjustable, 1 fixed and 1 base)	133	168	203	Height not recommended			112	140	168

The above formula is intended to provide for 10% expansion within a shelving unit before it is completely full. This will allow for circulation of books without the need of displacing existing books that are already shelved.

The metal shelves have a loaded weight capacity of 45 lbs. per square feet, without deflection in excess of $\frac{3}{32}$ ". Double face shelving units have twice the above stated capacities.

CUSTOMIZE YOUR VENUE

Metal Paint



Acrylic Insert Options (Panel Design concepts suggested, but are not limited to. For more details and pricing, please contact us)



RESOURCES

HOW TO BUY FROM PALMIERI

Palmieri has a nationwide dealer network with partners located across the United States and Canada that can assist you with product selection, purchase and installation.

WARRANTY

Limited Lifetime (25 years) warranty for all products except Seating - which is 2 years.

ENVIRONMENTAL STANDARDS & CERTIFICATIONS

Palmieri is conscious of the impact that our products have on the environment. Our objective is to offer products that support responsible forest management and conservation. We are committed and proud to be among the select few that can offer environmentally-responsible alternatives to designers, architects and engineers with LEED certification.

If you would like to locate a Palmieri authorized dealer or representative in your area or find more information, please contact us at **1-800-413-4440** or e-mail info@palmierifurniture.com.



DISCLAIMER

All product images, installations and specifications are based on the latest product information available at the time of publications. Images shown are for illustration purposes only and may not be an exact representation of the product and do not guarantee any product features. PALMIERI reserves the right to withdraw or otherwise modify any images or published materials we provide, at our sole discretion without prior notice. This may include revisions and substitutions to colors, materials, specifications, features, prices, and models offered.

PALMIERI

create. communicate. collaborate.

Palmieri Furniture Ltd.

1230 Reid Street
Richmond Hill
Ontario Canada L4B 1C4

T: 905 731 9300
F: 905 731 9878
TF: 800 413 4440

E: info@palmierifurniture.com
W: www.palmierifurniture.com