



CHALET

This cozy one-bedroom unit is perfect for a couple with two children, providing a balance of private space and togetherness, with a cozy and inviting atmosphere throughout.

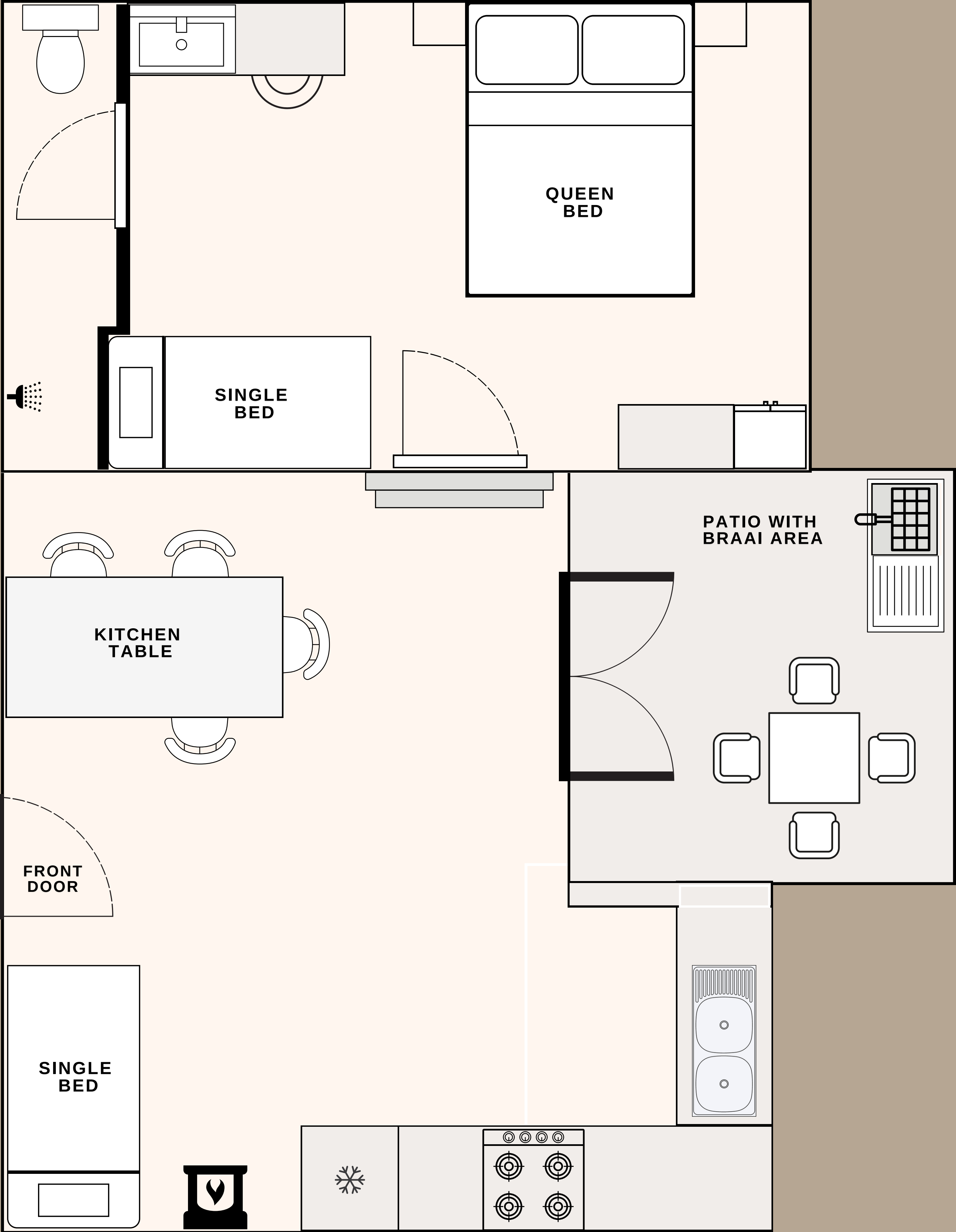
It features an open-plan living area with a single bed, a main bedroom with a queen-sized bed and an additional single bed tucked into the corner, as well as a private en-suite bathroom with a shower. The kitchen is fully equipped for easy meal preparation, with a fridge, electric oven, gas stove, kettle, microwave, and all essential cookware. For the colder winter months, a small fireplace is available to warm up the space.

Guests can also enjoy a private patio with a built-in braai and convenient parking directly adjacent to the unit.

 **3-4 GUESTS**
R1050.00 PER UNIT PER NIGHT



TYPICAL CHALET LAYOUT





BOOKING CONDITIONS & MINIMUM STAY POLICY

A **minimum stay of two (2) nights** is required for all bookings.

Single-night stays may be accommodated upon request; however, a **25% surcharge** will be added to the standard rate to cover additional cleaning and operational costs.

All bookings are subject to availability and confirmation of payment. Rates are quoted per night and may vary during peak seasons or public holidays. Check-in and check-out times must be strictly adhered to unless prior arrangements have been made in writing.

Guests are kindly requested to familiarise themselves with the full Accommodation Terms, Indemnity & Disclaimer, as all bookings and payments automatically constitute acceptance thereof.

