



TuffTex Materials
RESTORATION MADE EASY

WHEN SIZED, INSTALLED, MAINTAINED, AND INSPECTED PROPERLY, **REPJOINT PF-UV** CAN BE EXPECTED TO LAST 20 TO 25 YEARS. WE KNOW ONE ENEMY OF THE EXPANSION JOINT IS THE SNOWPLOW. THE GOOD NEWS IS HOW EASY **REPJOINT PF-UV** IS TO REPAIR. ONLY THE DAMAGED SECTION NEEDS TO BE REMOVED AND REINSTALLED – NOT THE ENTIRE LENGTH OF THE EXPANSION JOINT LIKE THAT OF A CONTINUOUS EXTRUDED SEAL. THE EASY TO CLEAN **REPJOINT PF-UV** FLAT TOP SURFACE PREVENTS MATERIAL FROM COMPRESSING INTO A DEPRESSION OR TROUGH.

Permanent Joints



Quick Repairs

CUSTOM FABRICATION, UNLIMITED LENGTHS, WIDTHS, DEPTHS. ACCEPTS MULTIPLE DIRECTIONAL CHANGES. EXCELLENT FOR REHAB OR STAGE CONSTRUCTION.

COSTS LESS AND LASTS LONGER
THAN OTHER COMPARABLE
SYSTEMS

**AVAILABLE FOR IMMEDIATE
DELIVERY THROUGHOUT THE
WORLD!**

TuffTex Materials
2209 Donley Drive
Austin, TX 78758
Office: (512) 617-7334



TuffTex Materials
RESTORATION MADE EASY

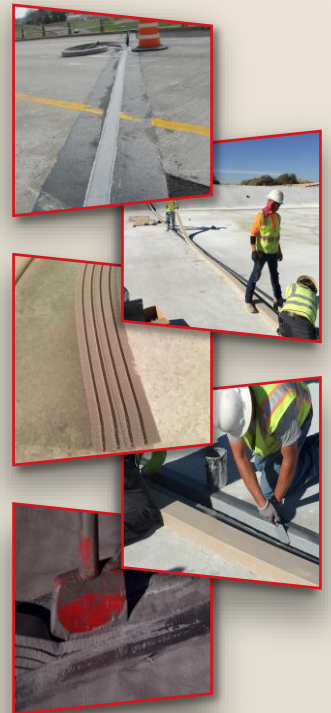
TuffTex Materials RepJoint PF-UV Pre-formed Joint Seal with “HALS” (Hindered Amine Light Stabilizer – UV inhibitor)

RepJoint PF-UV Joint Systems offer a *convenient* and durable waterproof expansion joint seal.

They may be installed in new, rehab, or stage construction projects. The seals may be field-welded to provide a monolithic waterproof joint. **RepJoint PF-UV** has a working range of 30% tension, 60% compression, and 100% shear movement. These systems are user-friendly, quickly installed, and allows traffic to be resumed almost immediately after installation. **RepJoint PF-UV** are permanently bonded to the substrates with **RepPoxy PA**, a two-component industrial epoxy adhesive. The systems are ideal expansion joint seals for bridges, car parks, wastewater treatment plants, stadiums, potable water applications, and many other commercial structures where a waterproof joint seal is required. Architects especially enjoy the ease of conformity to existing conditions regardless of contours, differing joint gap sizes, or intersections. **RepJoint PF-UV** may be installed against steel, concrete, wood, and other construction materials and are resistant to abrasion, oxidation, de-icing, oils, gasoline, salt, and other materials that may come in contact with the product.



-
- Expansion & Seismic joints
 - Cast-in-place joints
 - Bridges/Highways
 - Tunnels/Airport Runways
 - Commercial Buildings
 - Industrial Facilities
 - Water Treatment Facilities
 - Tanks/Pools
-



TuffTex Materials
2209 Donley Drive
Austin, TX 78758
Office: (512) 617-7334