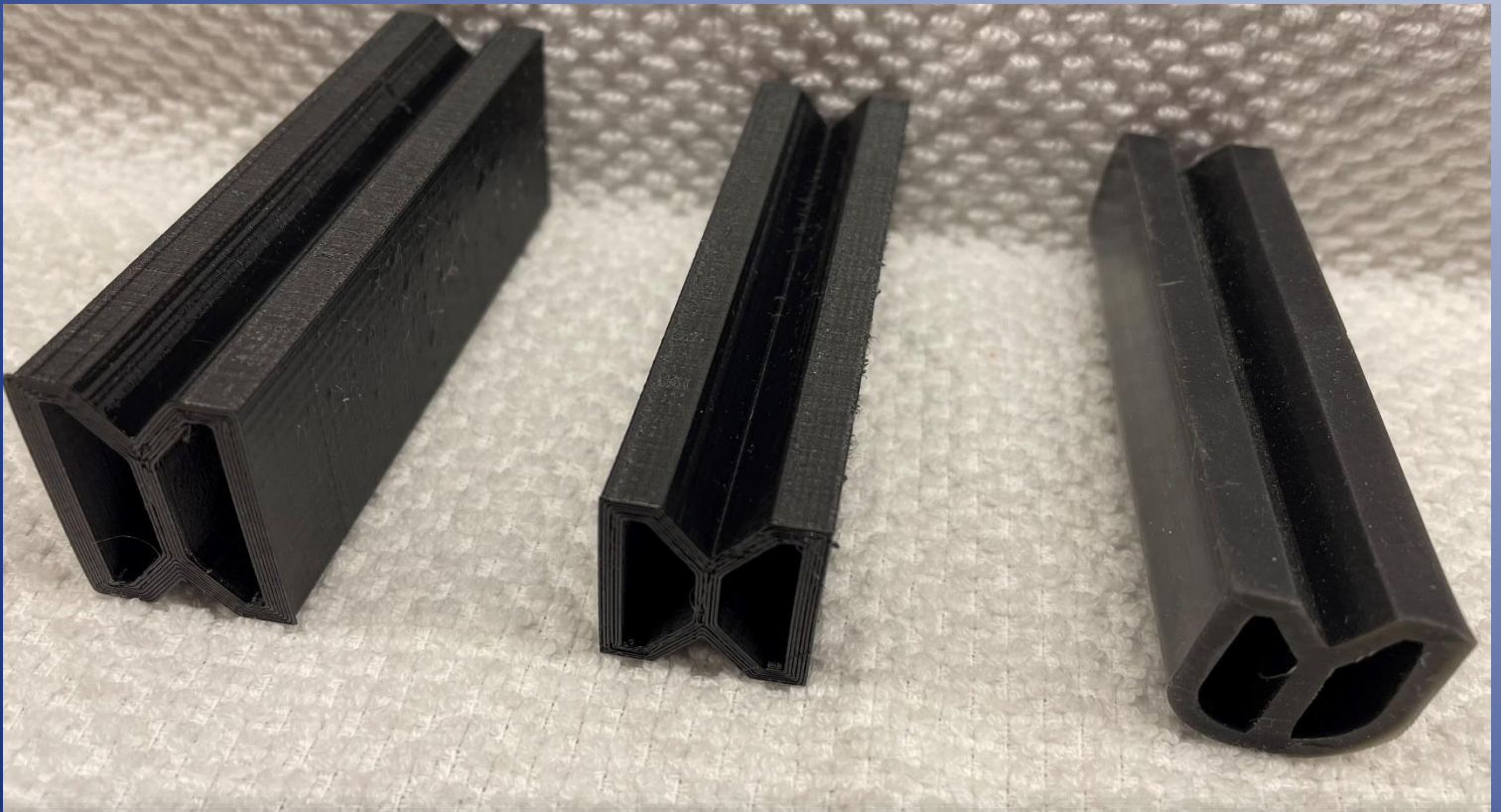


TuffTex Materials
RESTORATION MADE EASY



RepJoint Seals

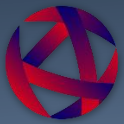
Preformed Pavement Seals

TuffTex Materials, Inc.

2209 Donley Drive

Austin, TX 78758

Office: (512) 617-7334



TuffTex Materials
RESTORATION MADE EASY

Factory Trained
Applicators!

Engineered
installation
equipment!

Ready for
traffic in 1 hr!

RepJoint Seals

FEATURES:

- UV & Ozone Resistant
- Easy to install
- Exceptional elongation and recovery
- Extremely durable bonds
- Fast setting adhesive
- Minimal maintenance
- Substantial savings over joint sealants
- Open to traffic: 1 Hour
- **No heated equipment required**
- No special tools required
- Great chemical resistance to icing solutions
- Resistant to oils & lubricants
- Zero VOC
- Extends the service life of decks

USES:

- Airport Runways, Taxiways
- Aprons, Refuel Pits
- Bridges, Parking Decks, Ramps
- Spillways, Dams
- Stadium Ramps,
- Pedestrian Overpasses

Functional Use Range:

-59°C to 135°C (-75 to 275°F)

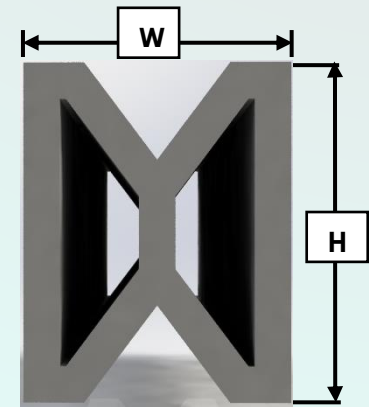
TuffTex Materials
2209 Donley Drive
Austin, TX 78758
Office: (512) 617-7334



TuffTex Materials
RESTORATION MADE EASY

| Seal No | Nominal Width (W) | Max Movement | Narrowest Opening | Widest Opening | Minimum Depth | Typical Installed width (A) |
|---------------|-------------------|--------------|-------------------|----------------|---------------|-----------------------------|
| U-400 | 0.437 | 0.153 | 0.219 | 0.372 | 1.000 | 0.250 |
| U-500 | 0.562 | 0.188 | 0.290 | 0.478 | 1.000 | 0.3125 |
| U-600 | 0.688 | 0.259 | 0.325 | 0.584 | 0.875 | 0.375 |
| U-800 | 0.812 | 0.313 | 0.378 | 0.691 | 1.000 | 0.500 |
| U-1000 | 1.060 | 0.563 | 0.500 | 1.063 | 1.500 | 0.750 |
| D-1250 | 1.250 | 0.563 | 0.500 | 1.063 | 1.750 | 0.750 |
| D-1625 | 1.625 | 0.631 | 0.750 | 1.381 | 2.125 | 0.875 |
| D-2000 | 2.000 | 0.950 | 0.750 | 1.700 | 2.500 | 1.125 |
| D-2500 | 2.500 | 1.125 | 1.000 | 2.125 | 3.000 | 1.375 |

| Pavement Seals Physical Properties | | |
|--|-------------------------------|---------------------|
| Properties | ASTM Test Method | Material Properties |
| Tensile Strength, min., psi (mPa) | D412 | 2000 |
| Elongation at Break, min. % | D412 | 900 |
| Hardness, Type A durometer, points | D2240 (Modified) ^A | 70 |
| Oven Aging, 70 h at 212°F Tensile Strength, loss, max., % Elongation, loss, max., % Hardness, Type A durometer, points change | D573 | 10% 17% +6 |
| Oil Swell, ASTM Oil No. 3, 70 h at 212°F (100°C) Weight change, max. % | D471 | 31 |
| Ozone Resistance: 20% strain, 300 pphm in air, 70 hr at 104°F(40°C) | D1149 (Modified) ^B | No Cracks |
| Low-Temperature Stiffening, 7 days at 14°F Hardness, Type A durometer, points change | D2240 | +9 |
| Low-Temperature Recovery ^C , 72 h at 14°F, 50% Deflection, min., % | 9.2 ^D | 93% |
| Low- Temperature Recovery ^C , 22 h at -20°F, 50% Deflection, min., % | 9.2 ^D | 89% |
| High-Temperature Recovery ^C , 72 h at 212°F 50% Deflection, min., % | 9.2 ^D | 91% |
| Compression-Deflection, at 80% of Nominal Width, min., lb f/in. | 9.3 ^D | 3.71 |

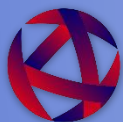


D Seals



U Seals

TuffTex Materials
2209 Donley Drive
Austin, TX 78758
Office: (512) 617-7334



TuffTex Materials
RESTORATION MADE EASY



DETAILED INSTALLATION INSTRUCTIONS FOR EASE OF USE ARE AVAILABLE AND RECOMMENDED!

CAUTION:

READ SDS PRIOR TO USING PRODUCT

Use with adequate ventilation. Wear protective clothing, gloves and eye protection. (Goggles, Safety Glasses and/or Face Shield) Keep out of the reach of children. Do not take internally. In case of ingestion, seek medical help immediately. May cause skin irritation upon contact, especially if prolonged or repeated exposure. If skin contact occurs, wash immediately with soap and water and seek medical help as needed. If eye contact occurs, flush immediately, with clean water and seek medical help as needed. Dispose of waste material in accordance with federal, state and local requirements. Cured resins are Innocuous.

WARRANTY:

Due to the use of this product beyond our control, we assume no liability for damages of any kind, and the user accepts the product "as is" and without warranties, expressed or implied, from either TuffTex Materials or its agents. The suitability of the product for an intended use shall be solely up to the user. Our only obligation shall be to replace or pay for any material proved defective, with our liability limited to the purchase price of materials supplied by us.

DISCLAIMER:

Refer to the SDS sheet before use. The information and recommendations set forth in this Product Data Sheet are based upon tests conducted by or on behalf of TuffTex Materials. Such information and recommendations set forth herein are subject to change and pertain to the product offered at the time of publication. Published technical data and instructions are subject to change without notice. Contact your local TuffTex distributor or technical representative for additional technical data and instructions.

OSHA Status:

This product is not considered to be a hazardous chemical under the federal OSHA Hazard Communication Standard 29 CFR 1910.1200.

TuffTex Materials

2209 Donley Drive

Austin, TX 78758

Office: (512) 617-7334