

IMC

INTERMEDIATE METAL CONDUIT

RYMCO Intermediate Metal Conduit (IMC)

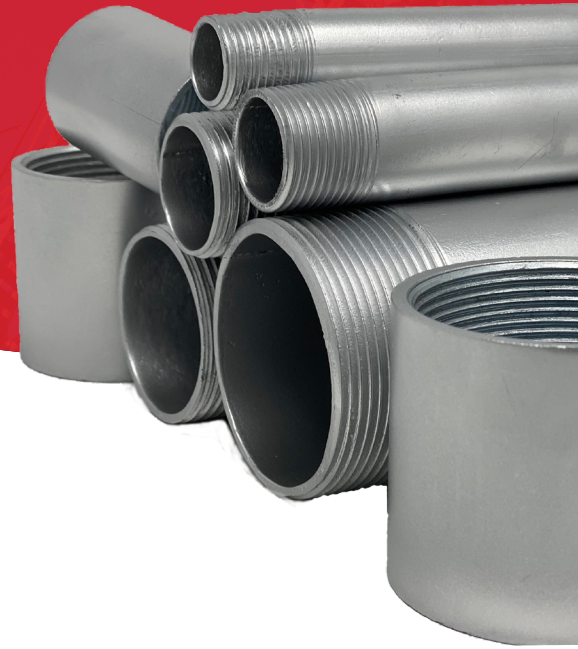
Developed as a lighter, but slightly wider version as our RMC. With 33% less steel and 1/3 less weight. The IMC comes in trade sizes from 1/2-4 inch in standard lengths of 10 feet (3.05 meters) including the coupling and threaded on both ends. The taper of the threads is 3/4 in. per foot (1 in 16) and are protected after cutting with molten zinc after. RYMCO IMC protects insulated electrical conductors and cables from magnetic interference, damage, impact and crushing. Color-coded end caps are applied opposite the couplings to protect the threads and provide quick visual indication of trade sizes.

Coatings:

RYMCO IMC exterior is hot-dipped galvanized with special high-grade zinc along with C Coat for added protection against corrosion. In addition to the galvanizing process, the interior of the conduit has a FreedomCoat® layer for rust prevention and allow for easier wire pulling and pushing. Providing our customers with peace of mind and the highest level of confidence in the RYMCO conduit.

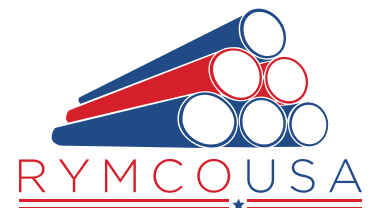
Application:

RYMCO IMC can be installed in all occupancies and locations, including Class 1 Division 1 hazardous locations and is recognized in the NEC Section 250.118 as an acceptable equipment grounding conductor and offers shielding against electromagnetic fields generated during normal operation of electrical installations.



Codes & Standards Compliance:

- UL 1242, File# E340533
 - ANSI C80.6
 - NEC Article 342
-



www.rymcousa.com

1-833-RYMCO-US

Looking for Steel Pipe?

Think of **RYMCO**. We Con-du-it.

Intermediate Metal Conduit Weights & Specifications (10' Lengths)

Trade Size	Metric Designator	Nominal OD	Nominal ID	Nominal Wall Thickness	Nominal Weight per foot with coupling	Feet in Master Bundle	Qty. in Master Bundle	Feet in Sub-Bundle	Nom. Weight per Master Bundle	End Cap Color
	mm	in.	in.	in.	lbs.	ft.	qty.	ft.	lbs.	
½	16	0.815	0.659	0.078	0.62	3500	350	100	2170	● Yellow
¾	21	1.029	0.836	0.083	0.84	2500	250	50	2100	● Green
1	27	1.290	1.104	0.093	1.19	1700	170	50	2023	● Orange
1¼	35	1.638	1.448	0.095	1.58	1350	135	-	2133	● Green
1½	41	1.883	1.683	0.100	1.94	1100	110	-	2134	● Yellow
2	53	2.360	2.15	0.105	2.56	800	80	-	2048	● Orange
2½	63	2.857	2.557	0.150	4.41	370	37	-	1632	● Yellow
3	78	3.476	3.176	0.150	5.43	300	30	-	1629	● Orange
3½	91	3.971	3.671	0.150	6.29	240	24	-	1510	● Yellow
4	103	4.466	4.166	0.150	7.00	240	24	-	1680	● Orange

RYMCO USA makes no warranties expressed or implied including warranty of merchantability or fitness for a particular purpose. The specifications, descriptions, information and illustrated materials herein are submitted solely for evaluation by others and since the use of its information is not within its control, RYMCO USA assumes no obligation or liability for such information and does not guarantee result from the use of said products or the information herein. Reference should be made to the original or primary source data along with standard accepted industry practice. The material herein is as of the date of publication and is subject to change without notice. Please consult manufacturer for proper warehousing, storing, handling and installation



4801 Gasmer Dr, Houston, TX 77035

Toll Free: 1-833-RYMCO-US

www.rymcousa.com