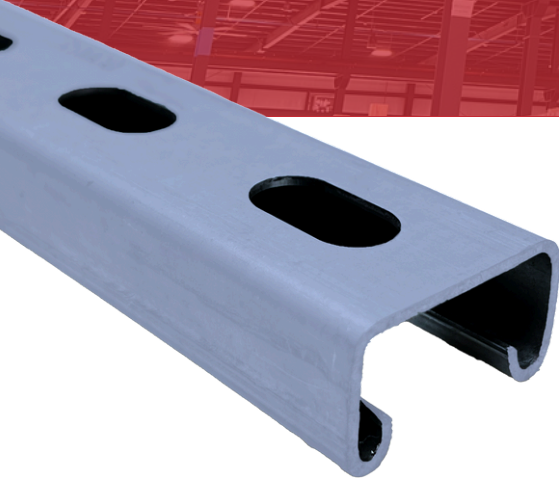
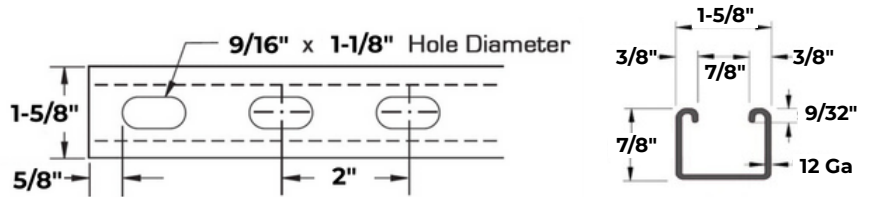




# STRUT



**RYMCO USA's Strut** is made from a low carbon steel with elongated slots. It is often used to support of cable trays and other forms of cable management, and pipes support systems, wiring, plumbing or even mechanical equipment such as air conditioning or ventilation systems.



Unbraced Height (in)	Allowable Load at Slot Face (lbs)	K = 1.0 (lbs)
24	2264	4980
36	2088	3760
48	1866	3358
60	1608	2605
72	1348	2180
84	1118	1812
96	760	1190
108	633	1040
120	533	915
144	388	NR
168	293	NR
192	229	NR
216	183	NR
240	150	NR



[www.rymcouusa.com](http://www.rymcouusa.com)

1-833-RYMCO-US

# STRUT

## Beam Loading Data

Span (in)	Uniform Load (Lbs)	Deflection (in)	Uniform Load at Deflection span/240 lbs
24	600	0.10	596.1
36	400	0.23	264.9
48	300	0.40	149.0
60	240	0.63	95.4
72	200	0.90	66.2
84	172	1.23	48.7
96	150	1.61	37.3
108	134	2.05	29.4
120	120	2.51	23.8
144	100	3.62	16.6
168	86	4.94	12.2
192	75	6.44	9.3
216	67	8.20	7.4
240	60	10.06	6.0

RYMCO USA makes no warranties expressed or implied including warranty of merchantability or fitness for a particular purpose. The specifications, descriptions, information and illustrated materials herein are submitted solely for evaluation by others and since the use of its information is not within its control, RYMCO USA assumes no obligation or liability for such information and does not guarantee result from the use of said products or the information herein. Reference should be made to the original or primary source data along with standard accepted industry practice. The material herein is as of the date of publication and is subject to change without notice. Please consult manufacturer for proper warehousing, storing, handling and installation



4801 Gasmer Dr, Houston, TX 77035  
Toll Free: 1-833-RYMCO-US  
[www.rymcousa.com](http://www.rymcousa.com)

