

**CONTACT FOR
LEASE RATES!**



2069 HAMMONDS PLAINS ROAD

FOR LEASE
1,150 SQUARE FEET



Craig Duininck
(902)219.2791

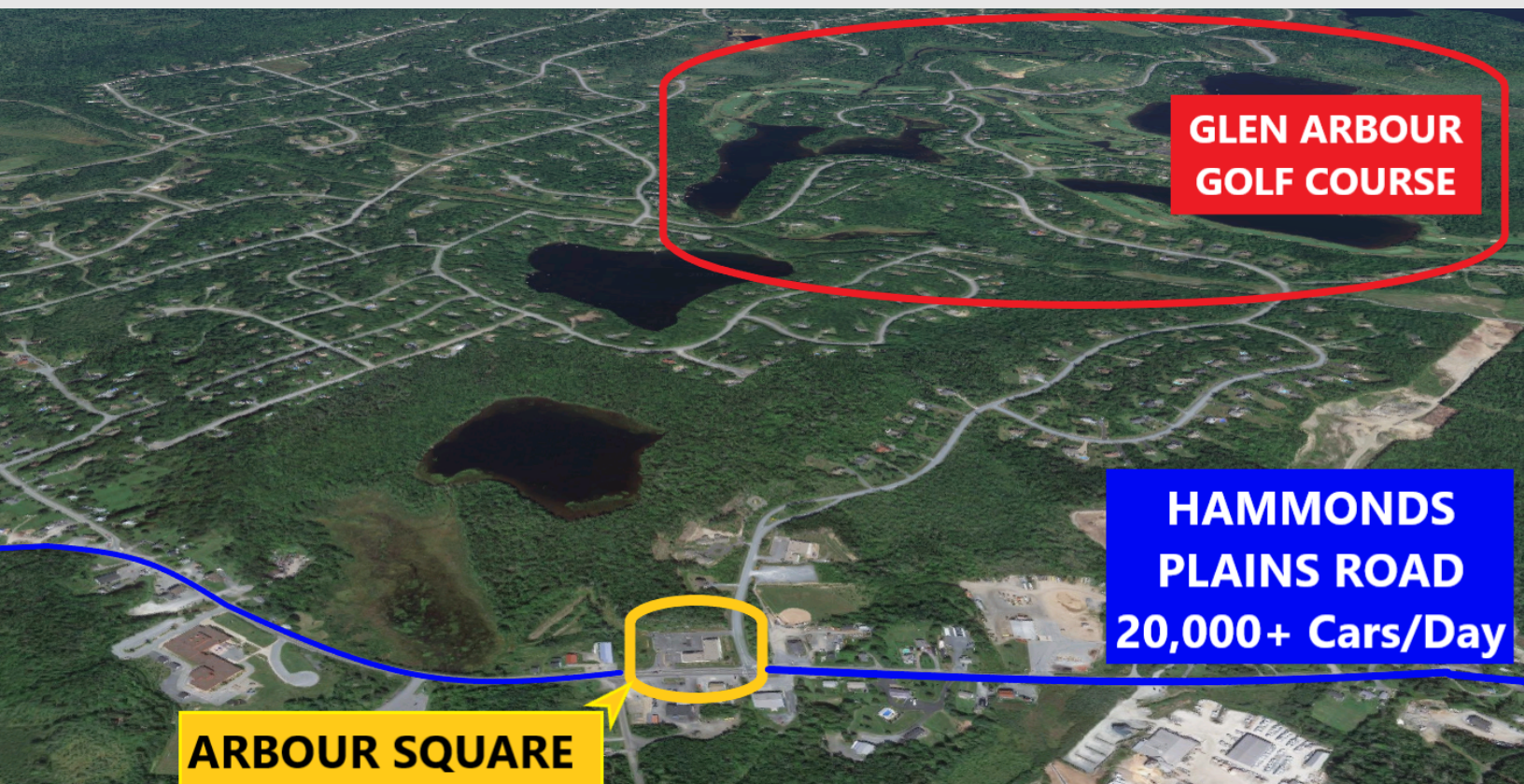
2069 HAMMONDS PLAINS ROAD

LOCATION:

ARBOUR SQUARE IS PERFECTLY SITUATED IN HAMMONDS PLAINS AT THE ENTRANCE TO THE UPSCALE SUBDIVISION OF GLEN ARBOUR & GLEN ARBOUR GOLF COURSE.

HAMMONDS PLAINS, AND ITS NEIGHBOURING COMMUNITIES OF BEDFORD, LARRY UTECK, WHITE HILLS, KINGSWOOD, AND TANTALLON, ARE EXPERIENCING RAPID GROWTH, AND WE ONLY HAVE ONCE VACANCY LEFT TO BETTER SERVE THEM!

ARBOUR SQUARE SEES A DAILY TRAFFIC COUNT OVER 20,000 CARS PER DAY WITH OVER 4,500 HOMES WITHIN 5 KMS.



(902)219.2791
CDuininck@PM-co.ca

2069 HAMMONDS PLAINS ROAD

OVERVIEW

- ✓ 1,150 SQUARE FEET
- ✓ OFFICE, PROFESSIONAL, RETAIL, RESTAURANT & MORE
- ✓ ASSISTANCE WITH LEASEHOLDS & ADVERTISING
- ✓ HIGH EXPOSURE / HIGH TRAFFIC
- ✓ AMPLE PARKING

FANTASTIC CO-TENANCY!

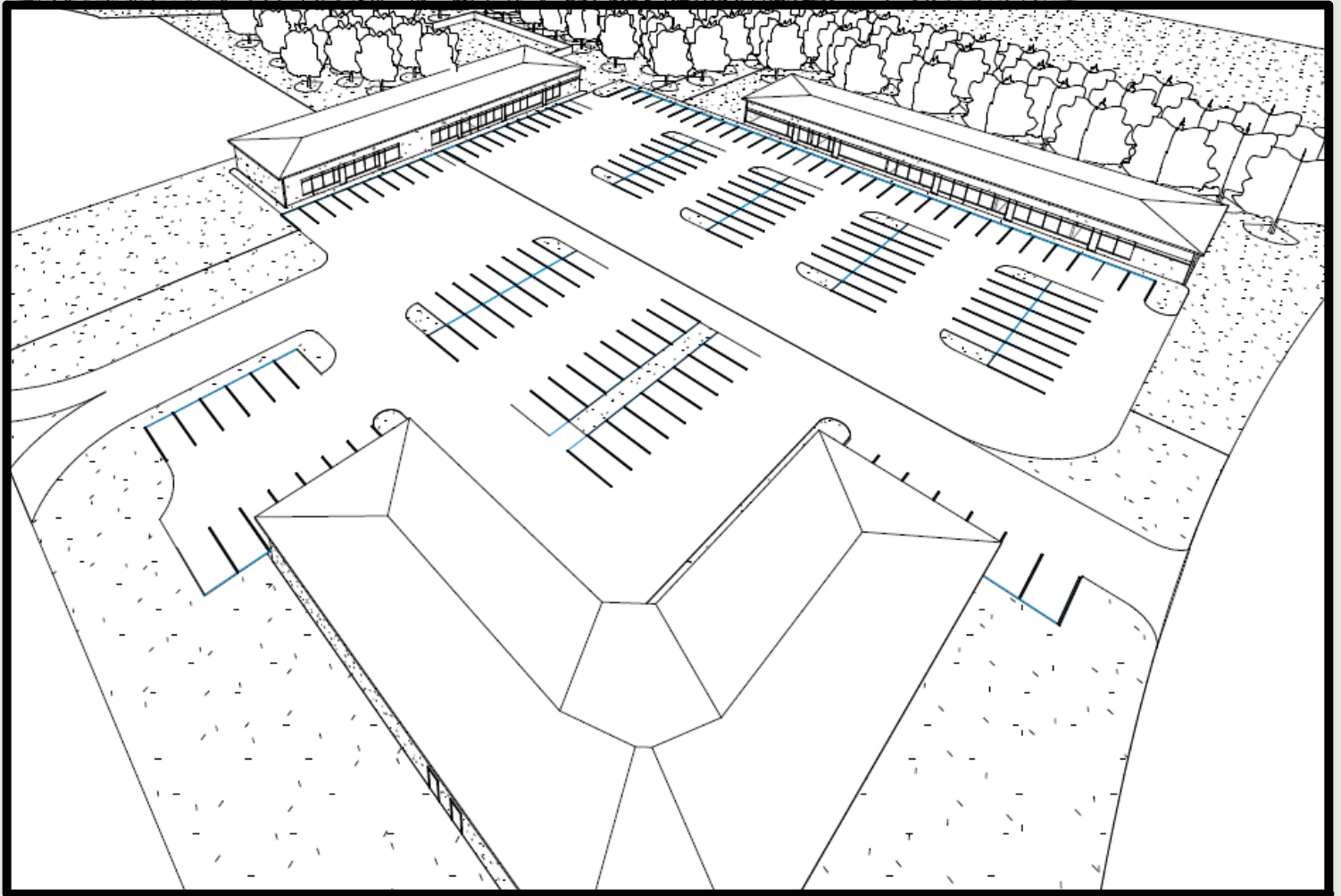
- ✓ ALL SMILES DENTAL HYGIENE CLINIC
- ✓ SUSAN'S JEWELLERY 'N THINGS
- ✓ HAMMONDS PLAINS VETERINARY HOSPITAL
- ✓ PEPPERTONI'S PIZZA
- ✓ HUB 214 COFFEE HOUSE



(902)219.2791
CDuininck@PM-co.ca

2069 HAMMONDS PLAINS ROAD

PHASE 2 & 3 COMING SOON!



Give us a Call!

Craig Duininck
(902)219-2791

CDuininck@PM-co.ca
www.PM-co.ca

