

Mining Properties for Sale

May 2025



LYONS O'DOWD
ATTORNEYS & COUNSELORS

RESOLVE FINANCIAL GROUP, INC.

Notice of Sale of Mining Properties – Invitation to Submit Offers

April 18, 2025

Dear Sir or Madam,

Please find enclosed a listing flyer outlining various mining properties for sale in Idaho, Utah, and Colorado.

These properties are being offered for sale pursuant to an Order of the District Court of the First Judicial District of the State of Idaho, in and for the County of Shoshone, in Case No. CV40-22-0300. Under the Court's Order, Resolve Financial Group, Inc. ("Resolve") has been appointed as Receiver to dissolve the following Idaho corporations and liquidate their assets:

- Hayden Hill Consolidation Mining Company
- Hunter Creek Mining Company
- Inspiration Lead Company, Inc.
- King of Pine Creek Mining Company
- Silverore Mines, Inc.
- Dayton-Inspiration Gold Corporation

Maggie Lyons, President of Resolve, invites interested parties to submit offers for some or all the listed properties. **Properties are offered for sale to the highest bidder. All offers must be received on or before August 31, 2025.** Resolve reserves the right to accept or reject any offer, request proof of funds, or request other supporting documentation in Resolve's sole discretion, consistent with fiduciary obligations and subject to Court approval where required.

Interested parties are invited to contact the Receiver to submit purchase offers and inquire about the sale process. Any questions regarding the properties may also be directed to Luke O'Dowd, the Receivership's legal counsel. Thank you for your interest in these properties.

Contact Information:

Maggie Lyons

Resolve Financial Group, Inc.
PO Box 598
Hayden, ID 83835
Email: maggiel@resolvefinancialgroup.com
Phone: (208) 659-3477

Luke O'Dowd

Lyons O'Dowd, PLLC
P.O. Box 131
Coeur d'Alene, ID 83816
Email: luke@lyonsodowd.com
Phone: (208) 714-0487

Sincerely,



Maggie Lyons, President
Resolve Financial Group, Inc., Receiver

PO Box 598 Hayden, ID 83835
maggiel@resolvefinancialgroup.com

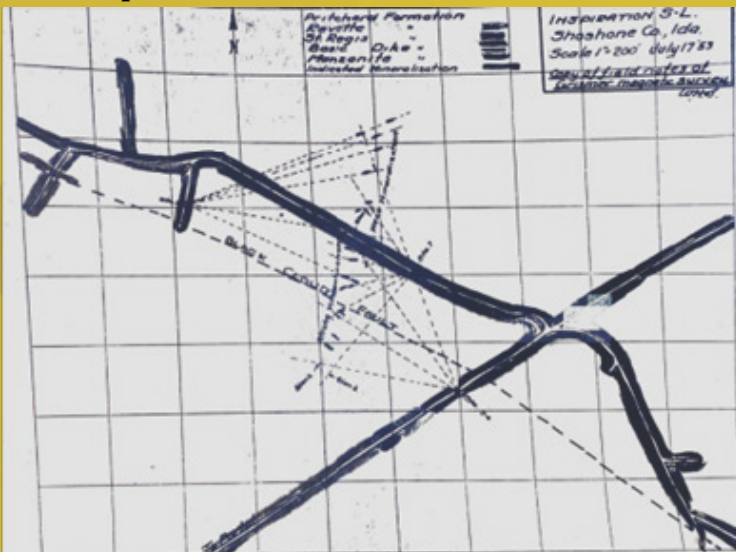
Silverore-Inspiration Mine For Sale

KEY FEATURES

- 10 Patented Claims Located Approximately 1.9 Miles Northeast of Osburn, Idaho
- Commodities: Primarily Silver, Lead, Zinc, Copper
- Previously leased by Sunshine Mining Company (1968) and Hecla Mining Company (1988)
- Not Explored since the 1980s
- Geological Setting:
 - Quartzite Formations Intersected by Diabase and Diorite Dikes
 - Significant Structural Features include the Black Cloud Fault and Shirttail Gulch Fault
 - Mineralization Tetrahedrite, Galena and Sphalerite in Blebs and Stringers
 - Light Grey Siliceous Quartzite believed to be in the Revett Formation
- Development Status:
 - Past Producer with Underground Workings
 - Adit runs north for 6,500'
 - 2,230' Drifting off Adit
 - 650' of Crosscutting
 - 100' of Raising
 - 7,441' of Diamond Drilling by Sunshine
 - Cut at 5,850' in Adit showed Silver and Lead values
 - Previously Reported Drill Results by Sunshine (1.2' 11.5oz Ag/ton 0.2% Cu, .3' 24.0oz Ag/ton 0.5 Cu, 1' 35.5oz Ag/ton 0.7 Cu, .005oz Au, 1.8 Zn)
- Historical Significance:
 - Located in one of the world's largest silver-producing areas
 - History with the Hunt Brothers takeover of the Sunshine
- Ownership: Owned jointly by Silverore Mines, Inc. and Inspiration Lead Company

OPPORTUNITIES

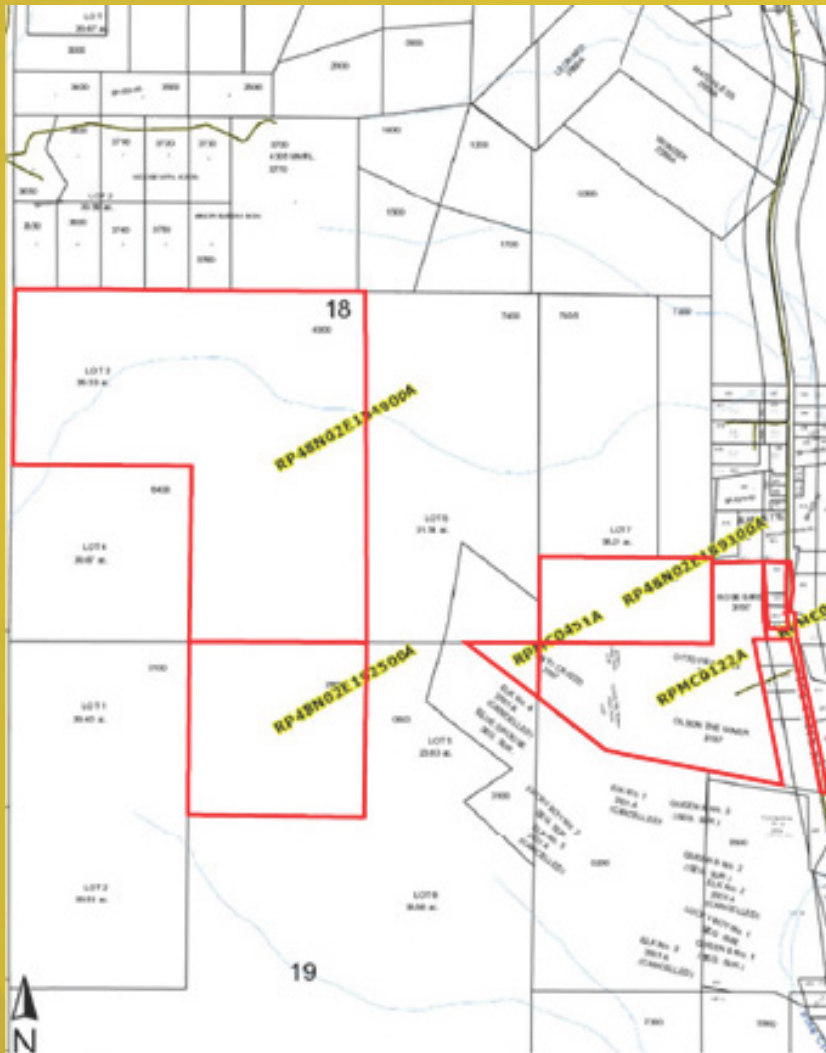
- Strategic investment in Idaho's prolific mining region with potential for further exploration and development of silver, lead, and zinc resources.



Silverore-Inspiration Lead Mine

Location: Approximately 1.9 miles north-northeast of Osburn, Idaho, in the Coeur d'Alene Mining District. (T48N R5E Sec. 9)

King of Pinecreek Property For Sale



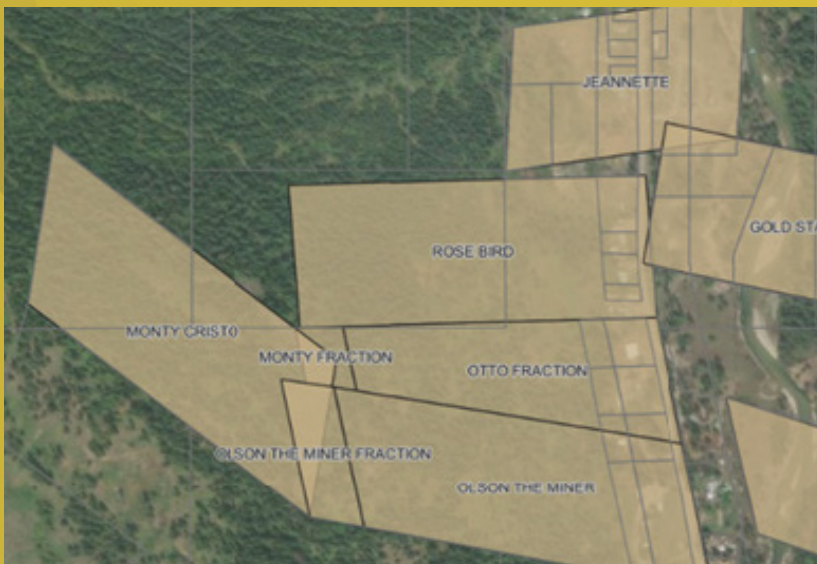
Three parcels consisting of 184 acres, six additional patented mining claims, and mineral rights to an additional 150 acres.

KEY FEATURES

- 184 acres of Surface & Mineral Rights across three Government Parcels
- Mineral Rights to an Additional 150 acres
- Mineral Rights to Six patented mining claims (M.S. #3197) near the Liberal King Mine with two known exploration adits (w/ Partial Surface Rights)
- Ownership: King of Pinecreek Mining Company

OPPORTUNITIES

- Potential for Exploration and Development with Subdivision Possibilities
- Valuable Timber
- Proximity to Liberal King Mine and Hypotheek Mine
- Prior Lease to Hypotheek Mining Company



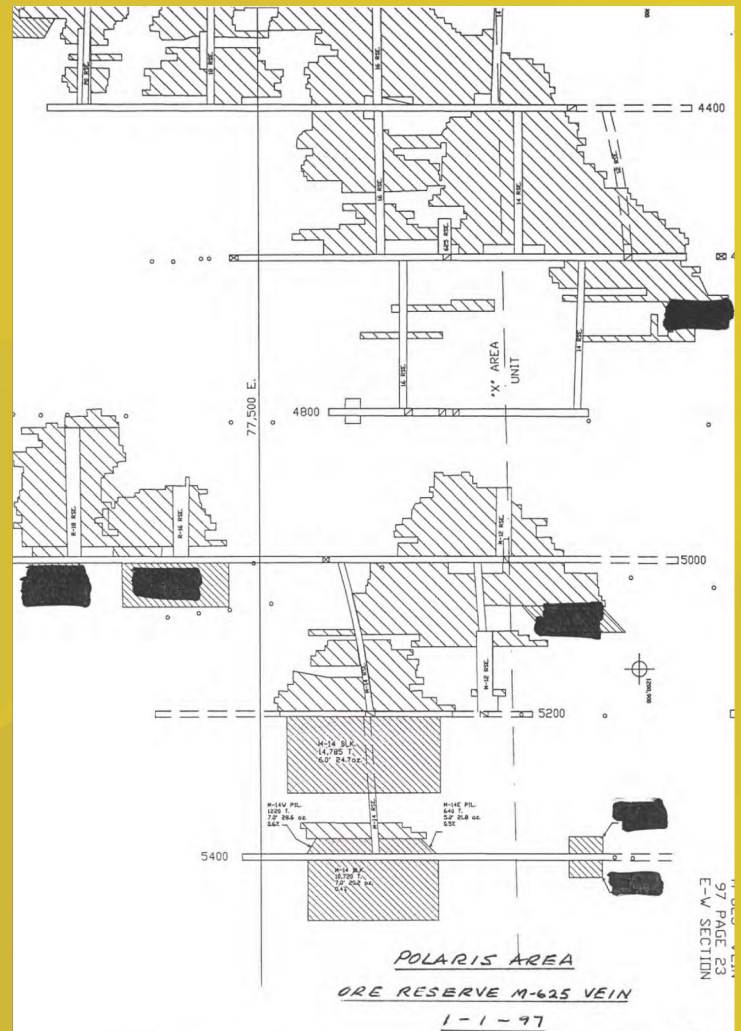
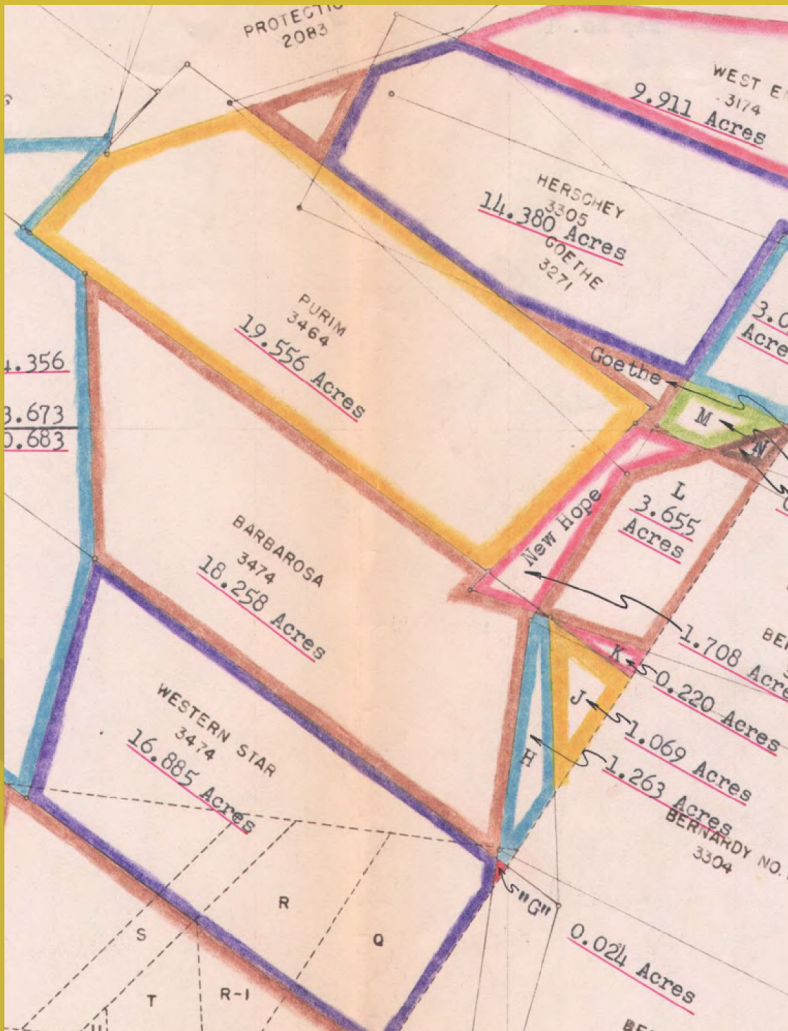
Pine Creek Property

Location: South of Pinehurst, Idaho, near Pine Creek (T48N R2E Sec. 17, 18, 19, 20)

Hayden Hill Property (Sunshine)

KEY FEATURES

- Three Patented Mining Claims in the Polaris Area, Sunshine Mine
 - Hershey MS 3305
 - Goethe MS 3271
 - 1/2 interest in New Hope and Purim MS 3464
- Two Unpatented Claims (1/2 Interest) Polaris Area, Sunshine Mine
 - Barbarossa (Restaked)
 - Western Star (Restaked)
- Property leased to Silver Opportunity Partners LLC until 2033
- Carries a 15% Royalty on Production
- Ownership: Hayden Hill Consolidated Mining Company
- 1997 Ore Reserves - 74,271 tons with an average grade of 24.3ozs per ton



Hayden Hill Property

Location: Sunshine Mine - South of Osburn, Idaho, East of Big Creek. (T48N R3E Sec. 23)

Eclipse Patented Claim

KEY FEATURES

- One patented mining claim (Eclipse Lode, M.S. 711) Silver Lake Basin
- Located in the Animas Mining District, San Juan County, Colorado near Silverton
- Proximity to historic production sites with no road access - hiking trail only
- Past Mines: Silver Lake, Iowa, Royal Tiger and Buckeye

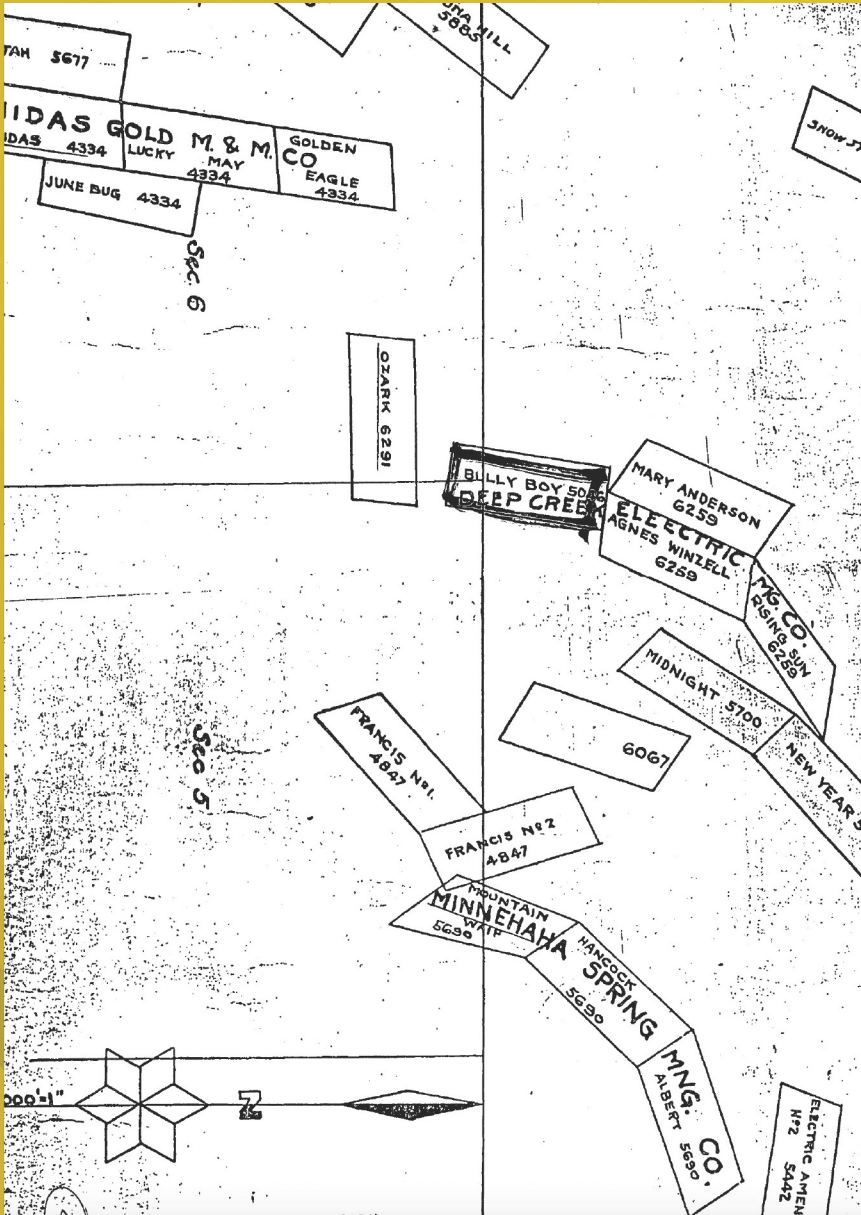


Eclipse Property

Location: San Juan County, Colorado, Southeast of Silverton (T41N R7W Sec. 23)

*Animas Mining
District*

Bully Boy Patented Claim



KEY FEATURES

- One patented mining claim (Bully Boy Lode, M.S. 5046) within proximity to active mining operations in the Gold Hill District.
- The Gold Hill Mining District has historic production of gold, silver, copper, arsenic and tungsten, with minor amounts of lead, zinc, silver and bismuth.
- Two miles south Clifton Mining Company's Gold Hill
- Access by jeep track
- Clifton area records indicate gold from nil to as much as 2.5 ozs per ton
- Patented by Deep Creek Electric Mining Co.
- Ownership: Inspiration Lead Company

OPPORTUNITIES

- Positioned in a historically productive mining district with exploration potential.

Bully Boy Property

Location: Tooele County, Utah, Southeast of Montezuma Peak (T17S R8E Sec 31, 32 and T17S R9E Sec 5 and 6)

Mineral Interests South of Revett Lake

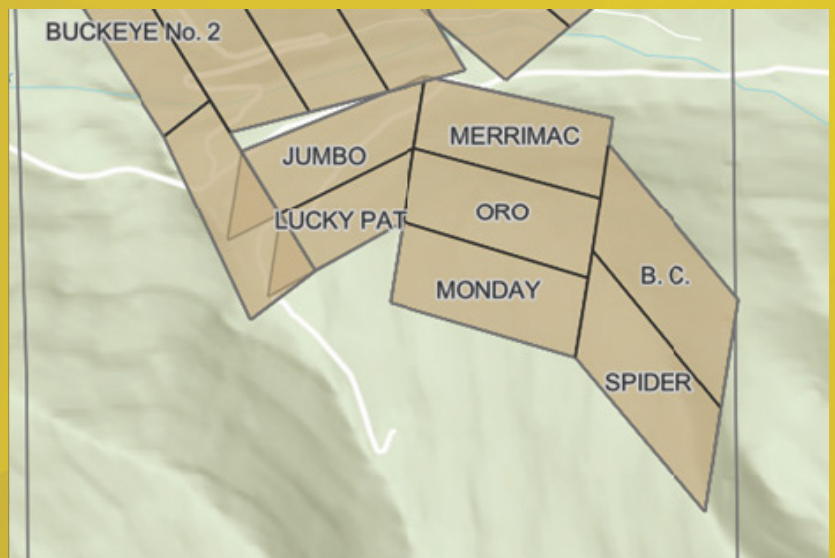


KEY FEATURES

- Accessible by State Highway 4 + Military Gulch Rd.
- Seven patented mining claims (M.S. #2244) with mineral rights only; surface owned by Stimson Lumber Company.
- Ownership: King of Pinecreek Mining Company

OPPORTUNITIES

- Strategic mineral rights in a resource-rich area with potential for future exploration



Revett Lake Property

Location: East of Burke, Idaho, near Revett Lake (T48N R5E Sec. 12)

Detailed property information can be found [here](#) or in the following data room links:

[Hunter Creek Claims](#)

[Silverore-Inspiration Mine](#)

[King of Pinecreek Property](#)

[Hayden Hill Property](#)

[Eclipse Patented Claim](#)

[Bully Boy Patented Claim](#)

[Patented Mineral Interests South of Revett Lake, Idaho](#)

For inquiries contact:

Luke O'Dowd

Lyons O'Dowd, PLLC

(208) 714-0487

luke@lyonsodowd.com

To file a Proof of Claim or for additional information about the Onstine Receivership visit: Onstinereceivership.com

*Buyer to verify all information.