



— FANNIN COUNTY —
family connection™



Annual Impact Report

Fiscal Year 2023 (July 1, 2022 – June 30, 2023)

The Fannin County Family Connection 2023 Leadership Team

OFFICERS AND STAFF

Executive Director

Sherry Morris

Chair

Sherry Echelberger

Vice-Chair

Michael Kilpatrick

Treasurer

Tom Niswander

Secretary

TC Dillard

Assistant Secretary

Gordon Riddoch

Office Manager

Mandi Hyde

Food Pantry Manager

Kala Ballew

Community Outreach Coordinator and Copywriter/Editor

Kristy Lindstrom

Family Care Project Coordinator

John Jacobs

Graphic Designer

Michael Kilpatrick

BOARD OF DIRECTORS

Sherry Echelberger

Michael Kilpatrick

Tom Niswander

T.C. Dillard

Gordon Riddoch

Ryan Beadnell

Jim Brumbelow

A.D. Frazier

Robert Gleadall

Brian Higgins

Jane Kimzey

Chris Martinez

Mark Snoddy

Bonnie Villeneuve

Karen Walton

Candace Youngberg

Hello, Friends, Supporters, and Volunteers:

Caring for families. Connecting to resources. Collaborating with key organizations.

Those three sentences are the “what” that we do at Fannin County Family Connection. This year, those sentences officially became the Mission of the organization. The “why” comes into focus with our vision statement: *A community of healthy and safe children and families*. Every board member, volunteer, and staff strives to accomplish the Mission and make our Vision a reality.

One would think that after the pandemic, the needs of the community would subside. Not so! The number of pantry visits rose in FY 23 (July '22 - June '23), resulting in our largest service year in the history of the food pantry dating back to 1998. Run-away cost increases for food and every other life necessity have left our working families, elderly, and the disabled struggling to make ends meet.

Another family demographic that continues to increase in our county is that of kinship care. When family members step in to raise non-biological children, they become kinship caregivers. We began a new program called “Family Care” to directly serve these families who are sharing their love, funds, and energy with children they never considered parenting. Family Care is primarily funded through a special grant process between the Georgia Department of Family and Children’s Services and the Georgia Family Connection Partnership. FCFC was among three counties statewide chosen to receive funding. This distinction and financial investment have elevated our Family Resource Center to one of the most respected in the state.

This past year held many *firsts*. We operated a Warming Shelter during the brutal temperatures of the Christmas holidays. We were also awarded grant funding from a new organization called Impact100 Fannin, which enabled us to purchase a new transport van to assist with our programming. This includes our new Family Care program, which is off and running with community events and monthly support group meetings. In addition to hitting record-setting food service numbers, the Food Pantry is now open the third Saturday of each month to support families who cannot visit during the week. This Annual Impact Report that you are reading is also another organizational first and represents a progress review conducted by the Board and staff. As you dive into the report, it reveals another first: FCFC revenues have surpassed the \$1 million mark, topping even our dreams! Nearly half of that revenue was through in-kind donations of food and other goods, volunteer time and business services. Cash donations illustrate the broad support we receive from individuals and organizations across our community. Our program expense ratio of 89% ranks in the top tier among charitable organizations.

Our team of board members, staff and volunteers showed up in FY23 with dedication, passion, and a strong desire to further our programs. We look forward to showing up with that same energy in FY24. Whether you donated clothes, blankets, cans of food, or personal items, repaired the facility, invested your dollars, or volunteered with your time, energy, and talents,

YOU made the difference.

We could not do this work without YOU. We thank you for your support and look forward to your continued engagement as we embark on our aggressive 2023-24 goals.

Sherry Morris Executive Director, Fannin County Family Connection

Our Vision: A community of healthy and safe children and families.

Our Mission: Caring for families, connecting with resources, and collaborating with key organizations.

Dear Friends and Supporters,

I have had the great fortune of living in this area for 14 years. The greater blessing for me is having served on the Fannin County Family Connection Board of Directors for just over four years. You truly get to know your community when you join forces with generous, caring hearts whose common goal is to enrich the lives of others.

At first glance, it doesn't seem possible that there could be families here in our beautiful North Georgia mountains who are unsheltered, food insecure, or suffering from mental illness. Or grandparents who have taken on the responsibility of caring for their grandchildren. But there are. Whether community members are experiencing the effects of their own personal trauma, feeling generally overwhelmed with navigating everyday life, or bravely stepping up to care for others, so many needs exist here.

Fannin County Family Connection recognizes that one of its greatest strengths in meeting those needs is our volunteers. Volunteers who serve our organization, especially those in the Food Pantry, are our eyes and ears. They listen to our visitors and often realize they have other needs, in addition to food. They are instrumental in connecting our clients to our many resources, such as free clothing, our kitchen, shower and laundry facilities, and other important programming that we offer. Volunteers don't just give of their time; they give of their hearts.

In addition, Fannin County Family Connection collaborates with key organizations to continually evaluate the ever-changing and growing needs of our community. This helps us to determine the direction of our programming, fill gaps in services, and meet our community's needs.

In closing, our hope is that this Annual Report is a snapshot providing you with valuable insight into our work at Fannin County Family Connection. Your investment in the community has made our impact possible – and we are so very thankful! Together, we will continue to care for families to help build a more resilient community.

Gratefully,

Sherry Echelberger Chair and Board Member, Fannin County Family Connection



FCFC Board Vice-Chair Michael Kilpatrick thanked volunteers in the April-June 2023 edition of the FCFC newsletter, and we wanted to share his message here.

“We live in a world that needs beautiful feet.”

“This quote was part of a sermon I heard by Rev. Denise Bell. As she spoke, all I could think about was FCFC volunteers, our beautiful feet. Whether walking the aisles of the food pantry filling carts, stocking shelves, serving clients, or representing FCFC in our community, our volunteers are our front lines. These beautiful feet represent the character, values and commitment of the FCFC organization. I would like to thank you, our volunteers, for your dedication. With your support and involvement, we will continue to move in a positive direction toward a brighter future. We are better because of you.

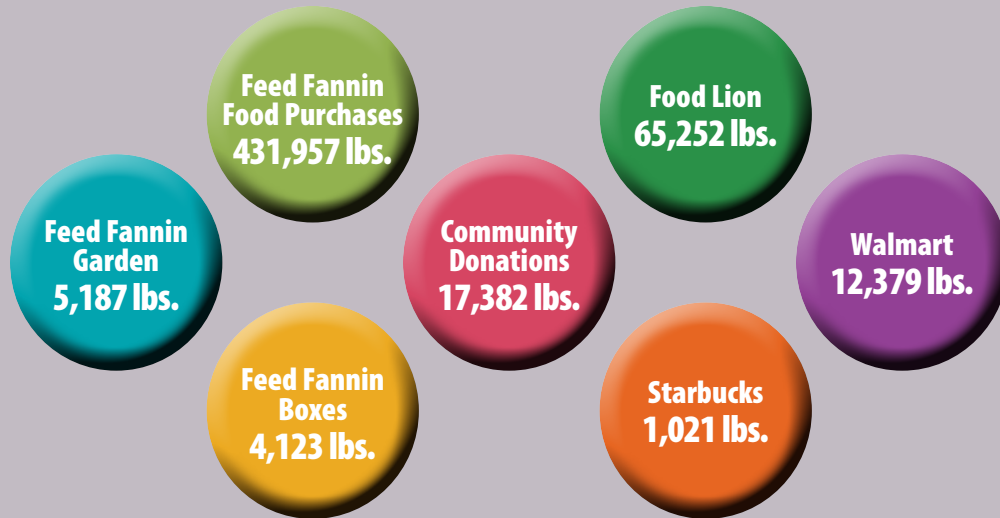
I leave you with this fact: The average person walks one hundred thousand miles in a lifetime. If our volunteers gift us with but a few of those miles, we are better because of it.”

Our Focus: To initiate and coordinate programs and services to improve stability for all children and families with an emphasis on reducing child neglect. This is in alignment with Georgia Family Connection strategies to improve results in 5 areas: healthy children; children primed for school; children succeeding in school; stable, self-sufficient, productive families; and vibrant, robust, thriving communities.

FY 2023 Pantry Numbers

FOOD DONATIONS

Pounds of food from retailers and community in FY 2023 (July 1, 2022-June 30, 2023)



TOTAL YEAR TO DATE: 537,301 lbs. or 447,750 meals

TOTAL PEOPLE SERVED

	Fiscal Year					
	2017-18	2018-19	2019-20	2020-21	2021-22	2022-23
Total Visits	15,914	17,113	19,456	20,536	19,721	23,445
Number of Children	4,049	4,206	4,922	5,263	5,067	6,168
Number of Adults	7,211	7,876	8,758	8,582	8,177	10,052
Number of Seniors	4,662	5,031	5,776	6,117	6,076	7,275
Total Families	5,711	6,069	7,050	7,143	7,444	8,270
Total Families with Children	2,052	2,150	2,520	2,694	2,534	3,076
First Time Families		430	487	377	354	461

We extend our sincere gratitude to Feed Fannin for their generous annual contribution to assist in the purchase of goods from area food banks.



Caring for Families
Connecting to Resources
Collaborating with Key Organizations

Day Services for Unsheltered
Free Clothing Closet and Library
Internet and Job Search Services
Quarterly Health Services

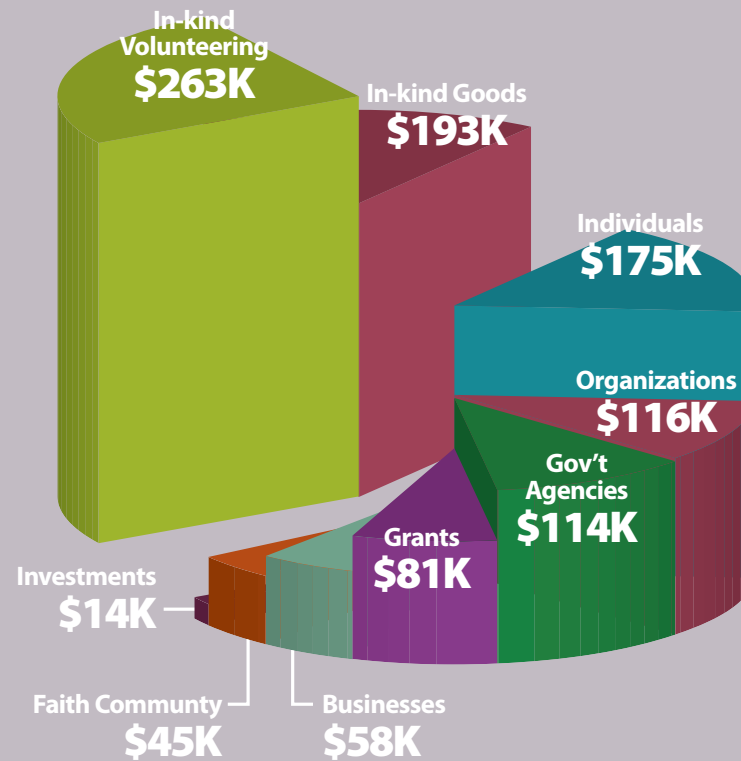
Food Pantry
(Every household receives meat, milk, eggs, bread, canned goods, and more)
Partnerships with Community Food Service Programs

Training available in Adverse Childhood Experiences (ACES), Bridges Out of Poverty, Community Change, Connections Matter, Darkness to Light, Facilitation, Poverty & Trauma Awareness, QPR Suicide Prevention, & Stewards of Children

Civic Dinner
Family Care Program
Mental Health Campaign
Monthly Collaborative Lunch & Learn
Poverty Awareness Outreach & Ambassador Connection Team (ACT)

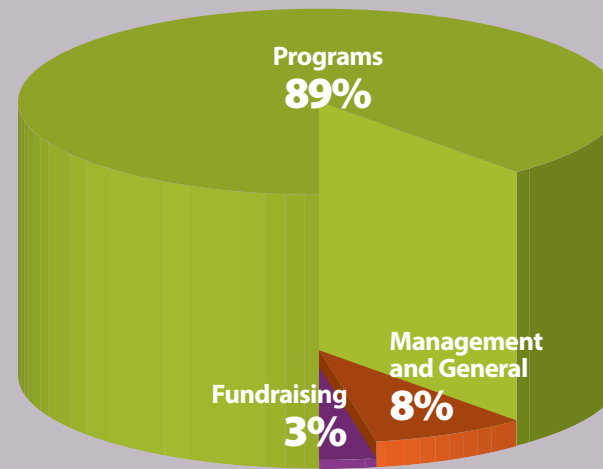
Financial Support

Incomes Sources	Amount
In-Kind Volunteering	\$263,000
In-Kind Goods	\$193,000
Individuals	\$175,000
Organizations	\$116,000
Gov't Agencies	\$114,000
Grants	\$81,000
Businesses	\$58,000
Faith Community	\$45,000
Investments	\$14,000
TOTAL	\$1,059,000



Expenses

Expenses	Amount	%
Programs	\$898,000	89%
Management and General	\$85,000	8%
Fundraising	\$29,000	3%
TOTAL	\$1,011,000	



Excludes additional capitalized expenditures of \$89,000.

Disclaimer: Unaudited financial data is reported for the 2023 fiscal year from July 1, 2022 - June 30, 2023.

Fannin County Family Connection Church Support

Fannin County Family Connection would like to thank these area churches for their support by donating approximately \$45,000 to our organization.

- Bethel United Methodist Church
- Blue Ridge Church of Christ
- Blue Ridge First Baptist Church
- Blue Ridge First Baptist Church Women
- Blue Ridge Orthodox Mission
- Blue Ridge United Methodist Church
- Blue Ridge United Methodist Men
- Blue Ridge United Methodist Women
- Calvary Chapel Blue Ridge
- Cherry Log Christian Church
- Faith Presbyterian Church
- Faith Presbyterian Church Women's Group
- First Baptist Church Epworth - Women on Mission
- Freedom Fellowship
- Hot House Baptist Church
- Lebanon Baptist Church
- Liberty Hill United Methodist Church – Liberty Hill/Bethel Churches
- Mobile Baptist Church
- New Hope Baptist Church
- Seventh-Day Adventist Church
- Shepherd of the Hills Lutheran Church
- St. Catherine's Catholic Church
- St. Luke's Episcopal Church
- St. Luke's Episcopal Women
- Temple Baptist Church
- Sunday School Class
- Williamstown United Methodist Church

Did You Know? In Georgia:

- 95,248 grandparents in Georgia are responsible for their grandchildren (Grandfamilies.org)
- For older adults, age 60+, 12% live below poverty level
- For adults who are age 60+ and responsible for raising grandchildren, 24% of them live below the poverty level
- More than half of grandparents raising their grandchildren are still in the workforce
- For every 1 child raised by kin in foster care, there are 28 being raised by kin outside of foster care

Did You Know? Locally:

From July through September of 2022, the FCFC Food Pantry served over 300 families that included at least one adult 55 years or older and at least one child younger than 18 years of age.

FCFC Launches Family Care Program

Supporting Relatives Raising Nonbiological Children

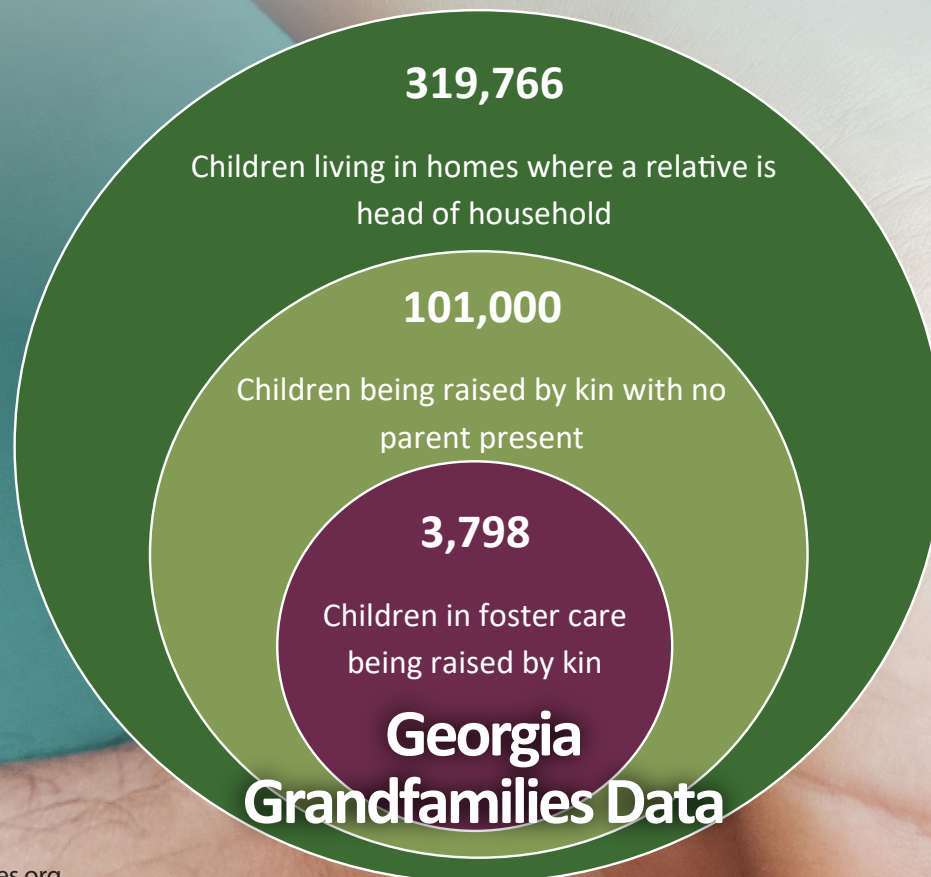
Development of the FCFC Family Care Program – Clients of the FCFC Food Pantry submit the names and ages of all individuals living in their household. With this data, staff and volunteers noticed a widening age gap between adults and children in many of those households. This led to conversations with a sampling of those families, revealing a common cause for the widening age gap. Many grandparents, great grandparents and other family members have found themselves, through no fault of their own, raising familial children, like grandchildren and great grandchildren. FCFC Executive Director Sherry Morris then hosted a group of these caregivers to learn more. The discovery of this growing population of relatives raising nonbiological children led to the creation of the Family Care program, which provides caregivers with information about available resources, how to access them, and the opportunity to connect and share experiences through a support group.

John Jacobs

FCFC Family Care Program Coordinator
john@fcfc1.org
706-946-7047

Bonnie Villeneuve

Support Group Facilitator
706-946-7047 or
239-451-9067



Source: grandfamilies.org

**72-Year-Old Great Grandmother
Raising 13-Year-Old Great Grandchild**

"Fannin County Family Connection has been a big help to me.

After I pay the bills, I don't have extra money. School was approaching and I couldn't get what he needed.

They helped us get a good start by purchasing underwear, socks, coats, shoes, and school supplies.

FCFC staff are very kind, friendly, and helpful.

It was perfect timing. I'm thankful. They've really helped me."

**68-Year-Old Great Grandmother
Raising 12-Year-Old Great Grandchild**

"Fannin County Family Connection has been very helpful to me.

They've helped me both mentally and financially.

If not for the Family Care program, I would not have been able to accomplish what I've accomplished.

They helped me get a washing machine, which I would not have been able to do. They've also helped me with food and Christmas gifts.

They are very kind, helpful, and informative about their programs.

They've done everything they can to help me."



"Through my work at Family Connection, I have learned that our community is full of grandparents and great grandparents raising grandchildren and great grandchildren," said Sherry Morris, Executive Director of Fannin County Family Connection. "Oftentimes, these caregivers receive children unexpectedly, and they are unprepared emotionally and financially. Our Family Care Program provides them with information about eligible resources and how to access them, and our support group provides an outlet for connecting with other caregivers experiencing a similar situation. We want them to know they are not alone."

**Sherry Morris, FCFC
Executive Director**

629 hours

148 people participated in some type of training (629 hours) at FCFC

\$7,791

Value of Board Member donated time (245 hours x 31.8 = \$7,791)

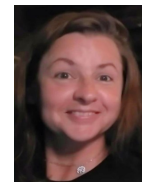
\$9,397

Value of donated time from Collaborative members (295.5 hours)

New employees that have joined the FCFC Family



Food Pantry Manager Kala Ballew joined Fannin County Family Connection in July of 2022.



“I have a ‘help bone’ in my body,” Kala says. “I want to give, and Fannin County Family Connection is the perfect place to do that.”

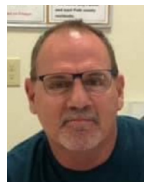
Kala was a volunteer before she took over the reins of the Food Pantry operation, and she brings a wealth of experience to the job, including work in shipping, packing and inventory plus team leadership.

Kala’s workday consists of picking up food donations, placing and organizing orders, serving clients in the pantry, and working alongside incredible volunteers.

“Each volunteer is here to serve and give back,” said Kala. “Also, each volunteer is different and brings his or her own unique personality and skillset to the table. And if you have a hole in your life, that hole could be filled by giving back. Being here is a daily reminder to me to be grateful for the life that I have.”

Kala has a special message for clients: “You will be greeted with kindness, grace, love and compassion.”

John Jacobs, Family Care Project Coordinator



Fannin County Family Connection welcomed John Jacobs as the new Family Care Program Coordinator in May of 2023. John is no stranger to FCFC having served as a volunteer in the Food Pantry since 2019. Originally from Dayton, Ohio, Jacobs is a former parks and recreation employee. He also worked for numerous years in roles with the public. In the Food Pantry, Jacobs assists Manager Kala Ballew by conducting daily duties. Jacobs says his new role as Family Care Program Coordinator is especially important to him. “Family Care exists when relatives step up to raise children when their parents cannot care for them,” said Jacobs. “I understand this situation very well and appreciate the need for this program because I’ve been there. I assisted in raising my granddaughter for seventeen years.” If you or someone you know is raising grandchildren, great grandchildren or other familial children, Jacobs wants you to know that you are not alone in your journey. “If you are a caregiver who needs help navigating the challenges of communication, finances, emotions and more,” Jacobs said, “the FCFC Family Care Program is here for you.” The FCFC Family Care Program includes community resource support and a monthly support group led by FCFC Board Member and Support Group Facilitator Bonnie Villeneuve. To learn more about the FCFC Family Care Program, contact John Jacobs at john@fcfc1.org or 706-946-7047.

FCFC Awarded Impact100 Fannin Grant

In December 2022, Fannin County Family Connection was awarded a \$69,000 grant from Impact100 Fannin to develop a Family Care Program.

“Our Family Care Program exists to support relatives who step up to raise children when their parents cannot care for them,” said John Jacobs, new Family Care Program Coordinator.

“These caregivers, including grandmothers, great grandmothers, and other family members, have accepted the responsibility of raising these children, and they need our support,” said FCFC Executive Director Sherry Morris.

This developing program provides caregivers with information on community resources and how to access resources, plus a monthly support group. The grant award also enabled the purchase of a transportation van to support future program activities.

To date, the Family Care Program has coordinated the purchase of a washing machine, refrigerator, eyeglasses, school clothes, school supplies, and assistance with payment of overdue bills. In addition, FCFC organized a Family Care Picnic in July to introduce the program to the community.



About the Impact100 Grant Application Process:

Impact100 Fannin, a new nonprofit organization in Fannin County, launched in April 2022. The organization awards grants to nonprofits in Fannin County and the money is to be used in Fannin County. Membership is \$1,000 per member, with funding used to award grants. The total amount awarded in 2022 was \$114,000.

Impact100 Fannin has a multi-step grant application process. In the first round, we completed a Letter of Inquiry, which included organizational information, proposed grant project, and its impact. As a second-round applicant, we completed a full grant application, including questions about our operation, its uniqueness, how the proposed project would be sustainable and transformational, our need for the project, the impacted population, and more.

We were then selected as a semi-finalist, and Impact100 Fannin membership made two site visits to our organization. Next, three finalists were selected, and we were asked to create a 10-minute video explaining our organization and proposed project.

Next, there was a video-watching gathering of Impact100 Fannin membership, finalists, and community members. We also made a 5-minute presentation and participated in a 5-minute question-and-answer session. Finally, Impact100 Fannin members voted to determine award recipients and a Grand Award Celebration was held.

Honoring the Chambers Family

FCFC Building Dedication and Reception



Fannin County Family Connection hosted a building dedication and reception on June 27 at 2:00 p.m. in honor of Glenn and Lynda Chambers and their family. In 2019, the Chambers' donated the FCFC Family Resource Center building to the organization.

"After several years of keeping our silence regarding the donor of our building, the Chambers Family has agreed to allow us to announce their donation to the community," said Sherry Morris, Executive Director of Fannin County Family Connection. "The remarkable donation of facilities that gave FCFC a permanent home has been the catalyst to expand our needed programming in the community. We now offer many aspects of wrap around care for our clients to assist them through tough times, and we've become a premier Family Resource Center in north Georgia all thanks the gift of the Chambers Family," Morris said.

With the addition of services offered at the Family Resource Center, Fannin County Family Connection

has garnered several grants that are assisting the organization in starting a Family Care program.

"We have over 300 families in Fannin whereby relatives have taken on the duty of raising familial children," Morris continued. "Often these families receive children unexpectedly and are unprepared emotionally and financially. That's where Fannin County Family Connection can help – all because we have a facility large enough to house a Family Resource Center."

"By having our own facilities and the opportunity to direct the use of those facilities when the weather was brutally cold in December," Morris recalled, "we opened a warming shelter within a days' time. Our plans are to continue to utilize the gift we've been given to the utmost in service to our community."

The dedication included a permanent plaque being placed inside the FCFC Community Room and outside the facility acknowledging the Chambers' generous donation to Fannin County Family Connection.



In Gratitude to The News Observer

FCFC would like to thank Glenn Harbison of The News Observer for attending the FCFC building dedication and reception in honor of the Chambers family. We appreciate his coverage of the event in the Wednesday, July 5, 2023 edition of the newspaper.

Family Connection building dedicated to Chambers family - By Glenn Harbison:

The Family County Family Connection (FCFC) building was dedicated Tuesday, June 27, as one person after another thanked the Chambers family for their generous donation of the facility.

It was Glenn and Lynda Chambers who donated the building several years ago as FCFC was losing its lease at its former location.

FCFC Executive Director Sherry Morris said that in hindsight being asked to relocate was "a blessing." The new building became a place where the organization "could reconnect, where we continue to serve our community."

Glenn and Lynda, along with their sons Chris and Patrick, listened as various FCFC board members and volunteers expressed appreciation for the Chambers' donation and hard work.

Cathy Cox-Brakefield told how, in the former FCFC location, "We had a lot of things that really didn't have a home. The new, 11,000-square-foot building donated by the Chambers solved that problem."

Jim Yacavone, who served on the FCFC board for eight-and-a-half years, said when the Chambers stepped forward it was "like a miracle," likening that miracle to its results. For instance, the old food pantry space was less than a fourth of what is available now.

Like so many speakers, Yacavone talked of how the facility expanded FCFC's ability "to serve" the community.

It also gave staff and volunteers, "A greater belief and hope we can do more."

A8

THE NEWS OBSERVER

Wednesday, July 5, 2023

Family Connection building dedicated to Chambers family

By GLENN HARBISON
glenn@thenewsobserver.com

The Family County Family Connection (FCFC) building was dedicated Tuesday, June 27, as one person after another thanked the Chambers family for their generous donation of the facility.

It was Glenn and Lynda Chambers who donated the building several years ago as FCFC was losing its lease at its former location.

FCFC Executive Director Sherry Morris said that in hindsight being asked to relocate was "a blessing." The new building became a place where the organization "could reconnect, where we continue to serve our community."

Glenn and Lynda, along with their sons Chris and Patrick, listened as various FCFC board members and volunteers expressed appreciation for the Chambers' donation and hard work.

Cathy Cox-Brakefield told how, in the former FCFC location, "We had a lot of things that really

longevity for the non-profit that very few similar organizations enjoy.

But praise for the Chambers went beyond the donation of a building. Their counterparts in the food pantry praised their hard work, dedication, and friendship.

Glenn Chambers expressed the family's gratitude, saying when he and Lynda moved to Blue Ridge in 2017 they wanted "to give back to the community" by volunteering. They became involved FCFC and it wasn't long until they learned the organization would have to relocate.

He told the story of how he obtained the building "after long negotiations."

Chambers then praised the work of FCFC staff and volunteers for having taken a shell of a building and turning it into, "A first rate, multi-use facility."

"I'm very proud to see what you've done with our donation," Chambers said.



News Observer photo/Glenn Harbison

Glenn Chambers reads the plaque on the wall at the entrance to Fannin County Family Connection recognizing his family for their donation of the building. He is joined by his wife, Lynda, and their sons, Chris and Patrick.

FCFC Treasurer Tom Niswander said the donation has created stability and longevity for the non-profit that very few similar organizations enjoy.

But praise for the Chambers went beyond the donation of a building. Their counterparts in the food pantry praised their hard work, dedication, and friendship.

Glenn Chambers expressed the family's gratitude, saying when he and Lynda moved to Blue Ridge in 2017, they wanted "to give back to the community" by volunteering. They became involved in FCFC, and it wasn't long until they learned the organization would have to relocate.

He told the story of how he obtained the building "after long negotiations."

Chambers then praised the work of FCFC staff and volunteers for having taken a shell of a building and turning it into, "A first rate, multi-use facility."

"I'm very proud to see what you've done with our donation," Chambers said.

Warming Shelter

In preparation for several days of subfreezing December temperatures, Fannin County Family Connection became a temporary, round the clock warming shelter from December 22-27, 2022. The warming shelter provided cots, sleeping bags, blankets, meals, clothing, showers, and other necessities to guests.

"With the bitter cold weather coming in and our increasing homeless population, we knew we needed to do something," said Patrick Cooke, Deputy Director, Fannin County Emergency Management Agency.

"We first reached out to Sherry Morris at Fannin County Family Connection, and she got the ball rolling," said Fannin County Commission Chairman Jamie Hensley.

"This is a community effort supported by the Fannin County Emergency Management Agency, Fire Department, Emergency Medical Services, Sheriff's Office, Blue Ridge Police Department, Fannin County Family Connection, and the Board of Commissioners," Hensley concluded.

Once the decision was made to operate the warming shelter, the community was made aware through the newspaper, social media, flyers, and word-of-mouth. Donations of blankets, sleeping bags, food and more then began pouring in to FCFC to support the effort.

PHOTO: Preparing for operation of temporary FCFC Warming Shelter: Jamie Hensley, Chairman, Fannin County Board of Commissioners, Sherry Morris, FCFC Executive Director, and Patrick Cooke, Deputy Director, Fannin County Emergency Management Agency



Thank You!
to everyone who supported the
Fannin County
Warming Shelter!
DECEMBER 22-27

FANNIN COUNTY
family connection

CITY OF BLUE RIDGE
EST. 1861

THE NEWS OBSERVER

FANNIN COUNTY
GEORGIA

WE ARE FANNIN COUNTY STRONG!

Thank you all for your kindness, compassion, and generosity.
Fannin County Board of Commissioners,
Fannin County Emergency Management Agency,
Fannin County Fire Department,
Fannin County Sheriff's Department,
Blue Ridge Police Department, Fannin County
Family Connection, and The News Observer

Special Thanks to Every Individual, Church, Organization, Business, and Volunteer

THANK YOU FOR PROVIDING
Coordination, Communication, Staffing, Shelter,
Security, Medical Care, Transportation, Hot Meals, Food,
Drinks, Blankets, Sleeping Bags, Pillows, Cots, Medical
& Hygiene Supplies, Coats, Clothing, Towels, Toys,
General Supplies, Monetary Donations and More!

Warming Shelter Volunteers Needed When Activated
Call to be on List of Volunteers

Fannin County Family Connection, Inc.
501 Fannin Industrial Park,
Blue Ridge, Georgia 30513
706-632-6063 / www.fcfc1.org

Toys for Tots — 8-Year Partnership

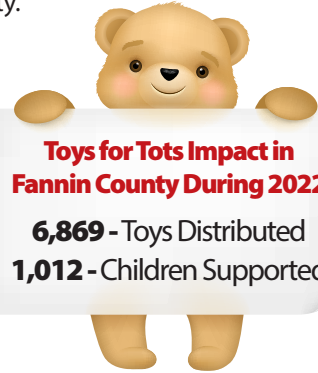
This year marks an eight-year partnership between Fannin County Family Connection and the U.S. Marine Corps Reserve's Toys for Tots Program serving Fannin County. Toys for Tots collects new, unwrapped toys each year, and then organizes and distributes them from the Fannin County Family Connection facility.

FCFC Board Member and Toys for Tots Coordinator Jim Brumbelow shares that 95% of Toys for Tots applications come through Fannin County Family Connection.

Brumbelow also shared the following dates:

- Toy Donation Boxes Distributed: Mid-October.
- Applications Accepted: October 16 through December 15
- Toys Distributed: December 15, 16, 17

To learn more visit www.fcfc1.org, click on Resources, Toys for Tots.



Toys for Tots Impact in Fannin County During 2022

6,869 - Toys Distributed
1,012 - Children Supported



Coats for Kids Coat Drive - FCFC was pleased to partner with The News Observer for their 18th annual Coats for Kids Winter Coat Drive. Participants who donated new winter coats were offered discounted subscriptions to The News Observer. Coats were collected in mid-late October, and then FCFC volunteers sorted and distributed coats in late October, early November.



Backpacks - Fannin County Family Connection expresses its appreciation to GPB for their donation of backpacks filled with school supplies, which arrived in the fall of 2022. They were offered to families during the Coats for Kids Coat Drive, Toys for Tots toy distribution, and throughout the year.



350 backpacks - FCFC distributed backpacks provided by GPB in FY2022, +40 provided by individuals

Kiwanis - We appreciate the Kiwanis Club of Blue Ridge and the community for donations of underwear, socks, t-shirts, coats, hats, gloves, scarves, blankets, Christmas stockings filled with goodies, stuffed animals, jewelry, and more, which were offered to families during the 2022 Toys for Tots toy distribution.



68 families - Children from families were given holiday gifts (stuffed animals, puzzle toys, new socks/underwear)

FAMILY CARE PICNIC

Family Connection hosted a Family Care Picnic on Friday, July 14, 2023. Guests enjoyed a water slide, bounce house, games, crafts, and face painting, along with giveaways of personal care items, backpacks filled with school supplies, and clothing. They were also treated to delicious food including burgers, hotdogs, sides, drinks, cotton candy, shaved ice, popcorn, and more.



Mental Health Matters

Your Mental Health Matters: It's Okay to Not be Okay mental health awareness campaign continues. Visit the "Your Mental Health Matters Fannin" Facebook page or join the workgroup quarterly via Zoom. Call FCFC for more details.

One
in **5**

U.S. adults experience mental illness each year

One
in **20**

U.S. adults experience serious mental illness each year

2nd
leading cause of death

Suicide is the 2nd leading cause of death among people aged 10-34

One
in **6**

U.S. youth aged 6-17 experience a mental health disorder each year

50
percent

50% of all lifetime mental illness begins by age 14, and 75% by age 24

Reality Day for FCHS 9th Graders

Fannin County Family Connection partnered with Fannin County High School to host Reality Day for 9th graders on October 12, 2022. Reality Day is designed to help students learn basic skills in financial planning, goal setting, decision making, career planning, and more. During interactions with adult volunteers at booths & simulations, students selected an occupation they'd like to have as an adult, received a checking account deposit equal to one month's salary from their desired job, spent their salary in simulations, and learned to navigate some of life's unexpected events. FCFC will partner with FCHS to host Reality Day once again on October 20, 2023.



Civic Dinner

On November 9, 2022, FCFC held a Civic Dinner at the Craddock Center in Cherry Log. The Civic Dinner is a casual conversation and dinner gathering of community members to discuss challenges facing families, gaps in community services, how to eliminate them, and how to serve needs. So far, FCFC has coordinated three Civic Dinners. Overwhelming issues discussed have resulted in three new programs, including poverty awareness, mental health awareness, and the Family Care program supporting family members raising non-biological children.

We're *hosting!*
A CIVIC DINNER!



UPCOMING EVENTS

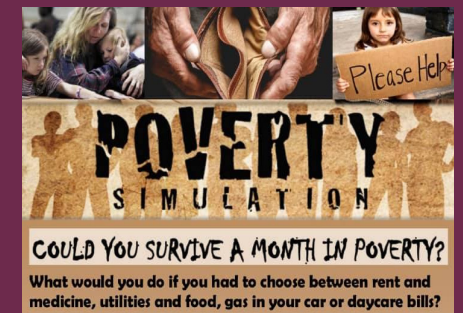
Visit our calendar at www.fcfc1.org/calendar



Community Collaborative Lunch & Learn
Second Friday of Month
(No Collaborative in October)



Christmas Tour of Homes
First Sunday in December



Poverty Awareness Simulation
February, 2024



— FANNIN COUNTY —
family connection™

