

Articles in this section

Moving SQL
database to a
remote server

TecomC4 Database
backup and restore

TecomC4 Upgrade -
FAQ

TecomC4 Visitor
Module

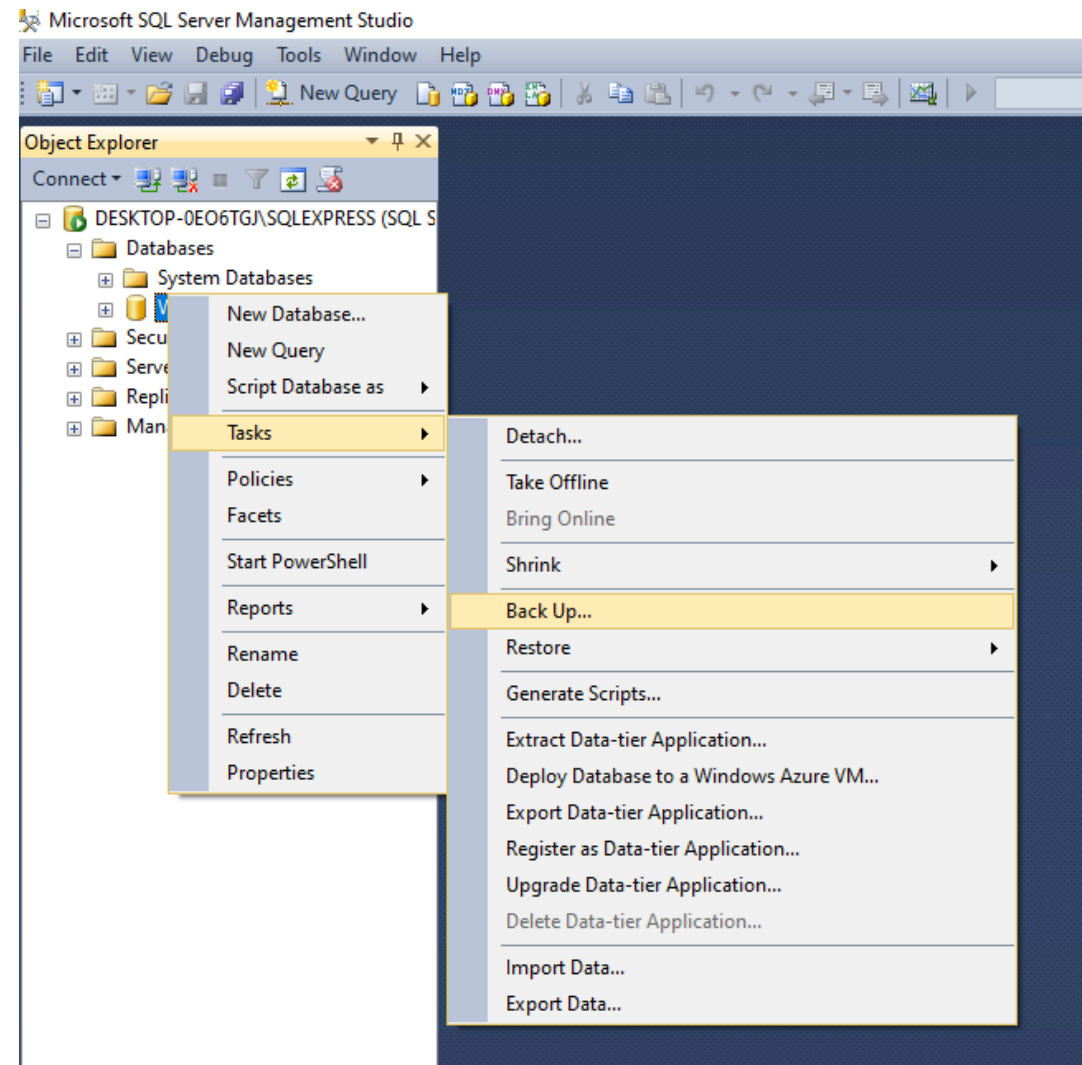
TecomC4 Database backup and restore

2 years ago · Updated

Database Backup using SQL Management Studio

1. Open Services manager and stop **TecomC4 Application server**
2. Open **SQL Management studio** and connect to database
3. On left side there are tree with your SQL server name, click expand button(+) on **Databases** and right click on **Wasp** database

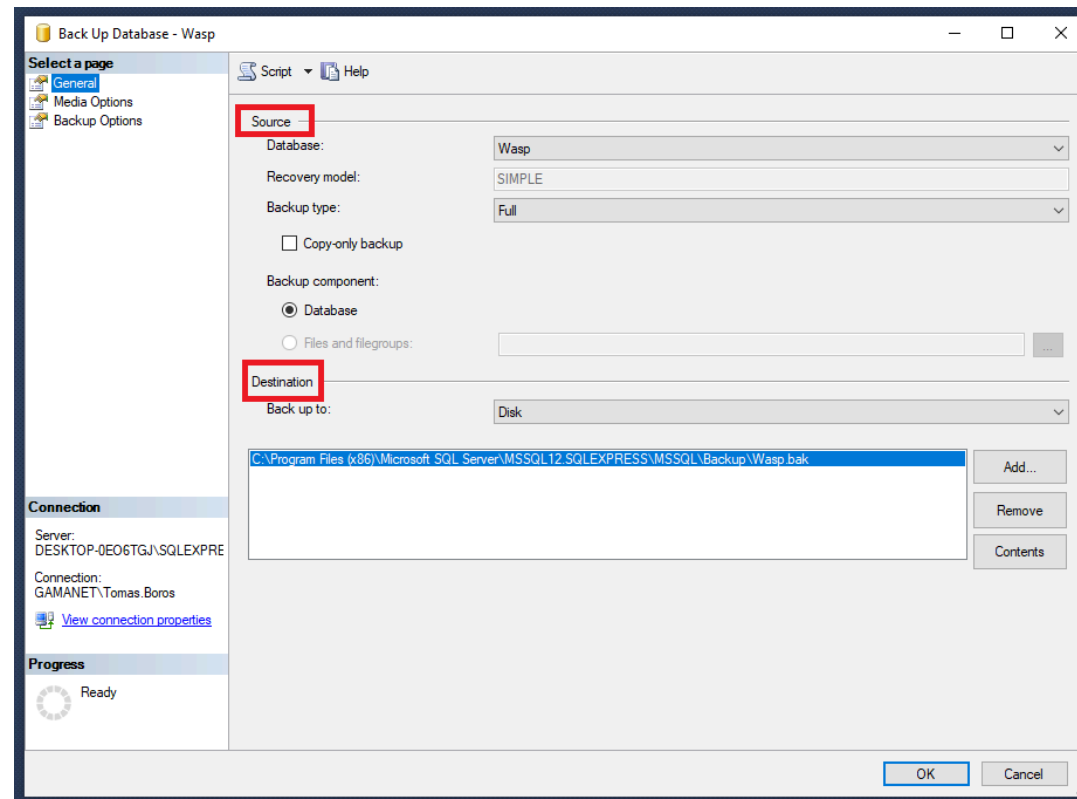
4. Click on **Tasks** → **Back Up...**



5. Table with backup property is opened.

In **General tab**, **Source** of Database must be **Wasp**, **Destination** is destination where you would like to store database.

Original storing place is somewhere like: **C:\Program Files (x86)\Microsoft SQL Server\MSSQL12.SQLEXPRESS\MSSQL\Backup\Wasp.bak**. If you want to change it, mark line with path, click to remove, then click to add and choose your own path.

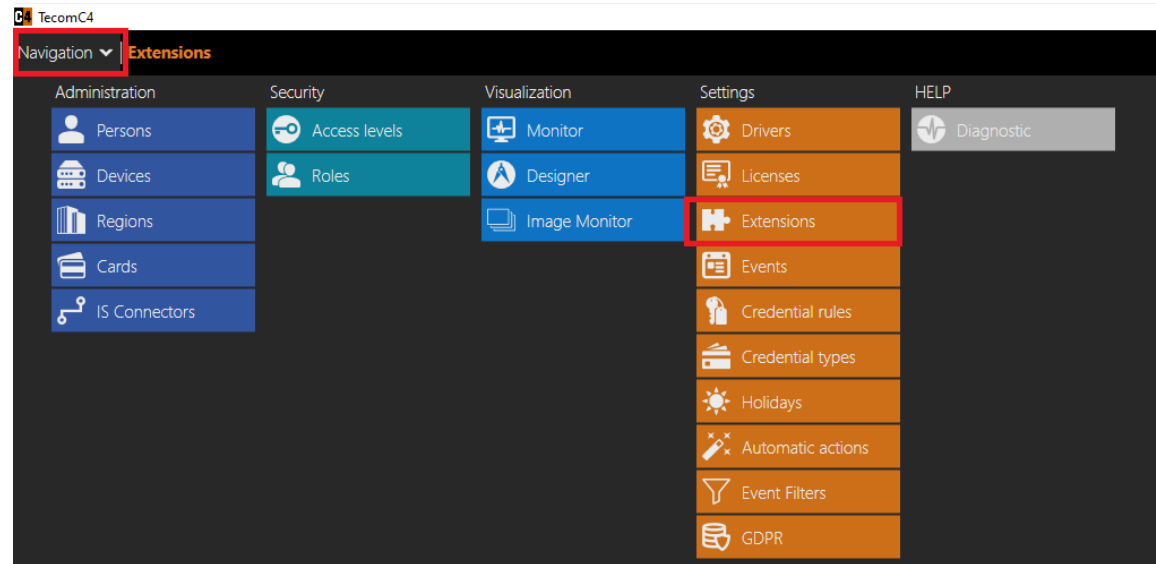


6. Start TecomC4 Application Server.

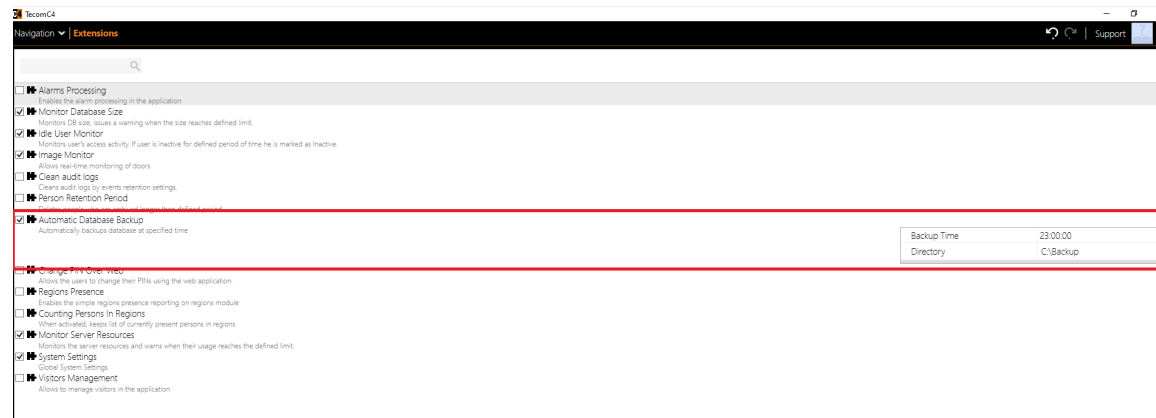
Database Backup using TecomC4 Client:

1. Log into TecomC4 Client.

2. Go to Navigation -> Extensions

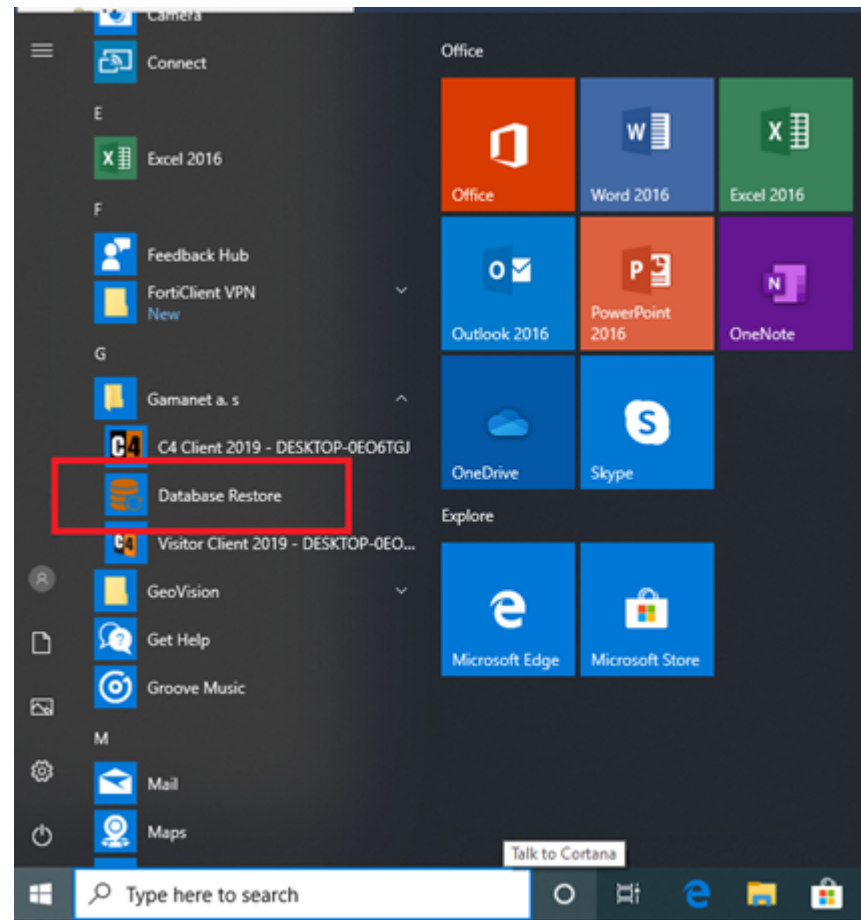


3. Enable Automatic Database Backup and set a time and location for the database backup.



Database Restore using Database Restore Tool:

1. Open Windows Start menu, find Gamanet folder and choose **Database Restore**



2. When DB RESTORE is started, click on ... in right side of window program and find your database which you would like to restore. Keep on mind that database must be stored somewhere in C/D disk. SQL cannot restore database from Desktop. Database must have post fix .bak and can't have special symbols in name. Correct name → wasp201120.bak.

Database Restore using standard Microsoft SQL Management Studio:

If a database restore is necessary we recommend to use Database Restore Utility, available and automatically installed on TecomC4 server. However, if manual restore via SQL is required follow the steps below.

Follow these steps to restore WASP database from a backup:

1. Stop **TecomC4 Application Service**
2. Log in to **SQL Management Studio** with administrative privileges account
3. Expand tree **Database** and select database **WASP**
4. Right-click **WASP** database and select **Tasks - Restore - Database...**
5. New window with restore options pops up - in **Source** part switch to **Device** and browse ("..." button) for a backup file
6. **Highlight** the chosen backup set and confirm **OK**
7. In **Options** tab select **Overwrite the existing database (WITH REPLACE)** and confirm **OK**
8. The database is now restored and your database has been overwritten.
9. In **Databases - Wasp - Security - Users** find account **"PCName\C4Service"** and delete it
10. In **Users (Databases - Wasp - Security - Users)** create a **new user**. New windows pops up with user settings
11. Change **User Type** to **Windows User**
12. In **Username** field enter **"PCName\C4Service"** - instead of PCName enter the actual C4 server name
13. In **Login name** field enter **"PCName\C4Service"** - instead of PCName enter the actual C4 server name
14. In **Default schema** field enter **dbo** and confirm account creation
15. Push **New Query** button and run command

exec Grant_Permissions 'PCName\C4Service' -- instead of PCName enter the actual C4 server name

Additional Comments

Database restore overwrites the existing database.

The version of the restored database must match the version of the installed C4 application.

Was this article helpful?

YES

NO

0 out of 0 found this helpful

Have more questions? [Submit a request](#)

Recently viewed articles

[Difference between NAC versions \(TS1066 , TS1066-4 and TS1067E \) and TS1067E Licensing](#)

[WMS Pro - How to check if a panel is reaching the server](#)

[WMS Pro - Unable to read data](#)

Related articles

[TecomC4 Upgrade - FAQ](#)

[Moving SQL database to a remote server](#)

[Discovery firmware upgrade procedure](#)

[WMS Pro Installation Guide and Datasheet](#)

[WMS Pro Quick Start Guide](#)

Need Help?

[About Us](#)

[Where to buy](#)

[Contact Us](#)

Website Terms

[Privacy Policy](#)

[Terms of Use](#)

Our Security Portfolio

[Tecom](#)

[TruVision](#)

[UltraSync](#)

[Reliance XR](#)

[Axon](#)

[IFS](#)

[Guardall](#)

Our Fire Portfolio

[Kidde Commercial](#)

[Kidde Residential](#)