



The Toddy Ponder

Newsletter of the Toddy Pond Association

Serving the Towns of Blue Hill, Orland, Penobscot, and Surry, Maine

Game Warden Speaks at Annual Meeting

Maine State Warden Christopher Roy, whose territory includes Toddy Pond, presented a review of "The Life of a Warden" at our annual meeting. His talk was heartily received and the hour was filled with questions and banter from the audience. Chris stated that Toddy Pond is his top priority. Toddy has good access, a diverse fish group, and very high traffic for bass fishing. These boats have live wells - a place where plant hitch hikers can enter various ponds. Therefore "Clean, Drain, Dry" is very important.

Warden Roy is on Toddy Pond or at the boat launch about twice each week, at varying times of day and night, and will often conduct boat inspections in addition to our TPA inspectors. He reviewed safe boating rules for motorized and paddle craft, and stressed his emphasis on educating boaters. Mr. Roy highly praised The Toddy Pond Association and its many volunteers for the time and efforts made to check incoming boats, and survey the lake for invasive plants. Attendees were encouraged to report reckless watercraft operators. Photographs can be helpful in tracking such an operator.

To contact the Warden Service, call the Bangor State Police at 207-973-3700. For an emergency such as a boating accident call 911.



Have I Paid Membership Dues This Year?

We rely on membership dues and donations heavily in our efforts to preserve our Toddy Pond.

If the year "2022" is printed above your name in the address field on this mailing, you have paid your dues for the 2022 fiscal year. If there is no year indicated, please consider renewing your membership or becoming a new member, thank you!

If you have questions or concerns, contact, Barbara Leaf, Treasurer at:

leafan@comcast.net



OUR MISSION: To protect Toddy Pond and its watershed through responsible stewardship and education so that we and future generations may enjoy its beauty.



TPA Potluck June 26, 2022

On June 26, the Toddy Pond Association held its annual “Hail to Summer” event. The venue at the Orland Community Center provided a large open space with plenty of room to mingle. There was strong interest shown in the good work we are accomplishing in courtesy boat inspection, plant patrol, loons, and water quality. We were graced with a stellar and hilarious performance by Lucy Leaf, Barb Leaf, and Steve Antell on ... insects! The 50/50 raffle once again raised money for the TPA, and many members paid their dues. Our new and beautiful Toddy Pond maps designed by Gaye Marie Rogers, were very well received, and sold out within an hour!

Annual Membership Meeting Budget Report

Our Annual Membership Meeting was held on August 16, 2022. Treasurer Barb Leaf presented the budget noting that as our fiscal year runs from January 1st through December 31st, we were at the midpoint of the budget year. As of 8/16/22, TPA income was \$24,099 and expenses were \$17,542. Dues were lagging by \$967 from last year at that time. Donations were also lagging by \$4,000 from last year. Our grant income was reduced by \$4,343 due to grant expirations. A garage sale benefit yielded \$1900 and the TPA gained 3 additional sponsors. With the anticipated deficit in income as compared to 2021, we reduced our biggest expense which is the Courtesy Boat Inspection (CBI) coverage. The CBI article in this newsletter provides more information on that program. We should end the year with approximately \$34,000. Our goal is to build the bottom line by \$1500 - \$2000 per year so that we are in a position to address unforeseen circumstances such as a dam issue or a plant infestation. In January, the financial oversight committee will review 2022 financial results and develop the 2023 budget.



Do you Know . . . ?

There is a species of sponge in Toddy Pond. It belongs to the phylum Porifera, a name derived from the many holes or pores in the body of a sponge.

Sponges are possibly the oldest multicellular organisms in the animal kingdom, and probably the last common ancestor of all multicellular animals. In other words, if you go back far enough, we all have a sponge for an ancestor.

Despite being animals, they have no tissues or organs. They feed on bacteria and planktonic organisms that are moved through tiny tubes and canals by cells with waving hair-like appendages called flagella.

The sponges in Toddy Pond most often appear like a patch of bright green carpet on top of an underwater rock or log. Filter feeders, their presence is considered to be an indicator of good water quality.

The green color comes from an algae called *Chlorella* that attaches to needle-like structures in the skeleton of the sponge.

[Oldest known sponge pushes back date for key split in animal evolution. Retrieved Oct. 22, 2022 from <https://www.science.org/content/article/oldest-known-sponge-pushes-back-date-key-split-animal-evolution>](https://www.science.org/content/article/oldest-known-sponge-pushes-back-date-key-split-animal-evolution)

Animal Fact Files. (2020, December 11) Freshwater Sponge Facts: Originally a PLANT 🌱. [Video] YouTube. https://youtube.com/watch?v=wFCv__pbKdo

Tidepool Tim. (2014, September 21) Green Gobs of Freshwater Sponge. [Video] YouTube. <https://youtube.com/watch?v=xKOV7ajId1U>

2022 Loon Report

The 39th annual Toddy Pond loon count took place on July 17. 28 volunteers took to the water on a beautiful Saturday morning and tallied 23 adult loons, boosted by one group of 7 non-breeding adults, and one healthy chick. 23 adults were the most since 2017, and the chick was the first in three years. All in all, an apparently successful



count. Many thanks to all our volunteers.

Realizing that a one-day count on a fixed date in July might not be giving us a complete picture of the health of our loon population, a small committee was formed this year to more systematically canvas the pond over the course of the summer. 7 volunteers split up the pond and checked out their sections periodically over the course of the year. We are aware of at least five nesting attempts in 2022. Three produced chicks, although only one survived more than a few days, one nest was founded abandoned before the egg could hatch, and one attempt never got very far. Eagle

predation is strongly suspected in the disappearance of two chicks and in the failure of the abandoned nest. Eagle activity is most obvious in south and middle Toddy, with at least two successful eagle nests producing 4 young.

We are still in the process of analyzing the data. The threat posed to our loons by eagles is a tough nut to crack. We are considering placing a nesting raft in north Toddy somewhere near the boat launch area next year. Our partners from Maine Audubon will probably provide us with the instructions and materials as long as we come up with the manpower. Stay tuned for an update next spring.

Steve Antell

LOON COUNT HISTORY



<u>Year</u>	<u>Adults</u>	<u>Chicks</u>
2022	21	2
2021	20	0
2020	17	0
2019	15	1
2018	20	0
2017	25	2
2016	22	4
2015	19	3
2014	14	0
2013	15	3
2012	23	2
2011	15	4
2010	22	1
2009	26	1
2008	25	4
2007	16	2
2006	18	3
2005	16	2
2004	19	3
2003	19	2
2002	26	2
2001	32	6
2000	16	0

Many Thanks to 2022 Toddy Pond Association Volunteers!

Loon Volunteers

Steve Antell, Mark Pokras, Swazey Family, Linda and Phil Jellison, Barb and Rick Malm, John Manfred, Susan Thomas and Joan D'Agostino, Arn Krugman, Richard and Yvette Tenney, Rob and Maureen Giffin, Chris Dadian, Nina Davis, Robyn and Kurt Silberstein, Donna Foster, Adam and Sara Levy

Invasive Plant Patrol Volunteers

Lucy Leaf, Dede Carlsten, Linda Jelison, John Manfred, Robin Yurkevicz, Terrie Perrine, Phil Tardiff, William and Janet Martin, Chris Dadian and Nina Davis, Dave and Betty Parsons, Doug Randolph, Ellen Bushing, Rob Giffen, Robyn and Kurt Silberstein, Sara Levy, Rachel Rosa, Donna and Yasuyuki Tamaki, David Baron, Courtney Weaver, Richard and Yvette Tenney, Mark Pokras, Bruce and Andrea Schober, Gaye Marie Rogers.

TPA Assists Courtesy Boat Inspection Start-Up on Silver Lake



With help from Toddy Pond Association, Silver Lake had boat inspection on most weekends this year from mid June through Labor Day. Funding for paid inspectors was provided by Maine Water Co. and the Town of Bucksport, which included a percentage offered to TPA to manage the program. Since funding was available, the TPA Board decided to extend our program to help get CBI started on a neighboring lake, which is an important protective measure for all the surrounding lakes.

As a popular bass fishing lake, Silver Lake has a surprisingly large volume of boat traffic including recreational craft, and many of the boats have traveled to surrounding lakes. The program was well received by boaters and the townspeople alike. Silver Lake also provides the Bucksport water supply. It is hoped that the townspeople will be able to continue the program on their own hereafter.

Plant Patrol Group Work is Efficient and Fun!



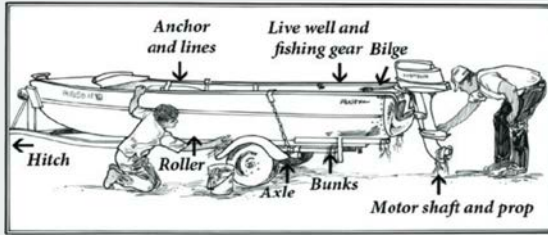
This summer was great weather for Invasive Plant Patrols and no invasive plants were found! This year we had two group surveys as planned during the second week of August, one kayaking in the Floating Islands Cove, the other patrolling the Narrows and the deeper shores of North Toddy by pontoon boat. County-wide, we are learning that the use of both kayaks and pontoon boats is a good combination; also using the heavy rake that Linda Jellison constructed to see what lies in the deeper littoral zones. Lots, it appears, of native milfoil we didn't know about in the Floating Islands Cove. The kayaks are efficient in the shallows while the higher view from the pontoon boat works well in the 4-8 ft depths. The

pontoon also gets Ipper's together who can't transport their boats to another area easily, so we hope to continue this method of team building in the future. Thank-you, Bruce and Andrea Schober, for providing the pontoon boat and John Manfred for offering as well. Sarah Levine has also made her dingy and 3hp motor available which was helpful in getting us to the far reaches of the South end several times.

Twenty-nine Ipper's signed up for sectors this summer, covering the entire shoreline, and several newer IPPer's met the requirements for LSM certification this year and last. Our certification percentage is very impressive. TPA also co-hosted an LSM Plant Paddle at Alamoosook Lake that was well attended.

For more information contact: lucy@toddypond.org or 207-266-3212

Courtesy Boat Inspections, More Boats, More Inspections



CLEAN off all plants (even small fragments), animals and mud from boat, trailer, and equipment.

DRAIN water from boat, motor, bilge, live wells and other equipment well away from water.

DRY everything five days or more before using in another waterbody to kill small organisms not easily seen or wipe with a towel before use. If you can't dry equipment, rinsing with hot, high pressure water will also remove many tiny organisms.

NEVER release plants, live fish or animals into a water body unless they came out of that body of water.

Maine.gov, 2022-CBI-Handbook



We keep hearing that boating is increasing on our Maine lakes, as are the people who are flocking to live on lakefront properties year-round or renting out their seasonal camps. The need to protect Maine's valuable natural resources is ever more urgent, but the resources to do it remain slim. While clean lakes contribute greatly to the overall state economy, it is still up to lake property owners to implement protective measures. The cost of Toddy Pond's Courtesy Boat Inspection program for 2022 was over \$11,000. The state contributes only \$2,000, a figure that has not changed in over a decade. This is a call to everyone to please talk to your town officials and state representatives for more support in keeping our lakes clean.

This year TPA returned to two paid inspectors who agreed to cover all weekends and more from early May to early September and did a great job of it. Thank-you to our veteran inspectors, Steve and Joe, who conducted over 1100 inspections, including numerous days of

30-50 inspections in a single nine-hour shift. Our record day was 55 inspections on Sunday, July 3 with five trailers already in the lot at 6 AM. Fourteen volunteers also did inspections mid-week with, thankfully, much lighter boat traffic. One couple took three shifts this year- thank-you to Bill and Janet Martin. Volunteer inspectors, as well as donors who allow us to provide more paid hours, are providing the message that we care about our lake and hopefully others will be careful in their use as well. The good news from our inspectors is that today, launching boats are cleaner and boaters seem more aware of their role in keeping the lakes free of invasive plants. This year we introduced additional "random hours", all of which were utilized, to inspect more fishing boats in the early morning hours. Every year, we study our data to see how we can increase efficiency and effectiveness of our program.

Thank You 2022 Toddy Pond Association CBI Volunteers!

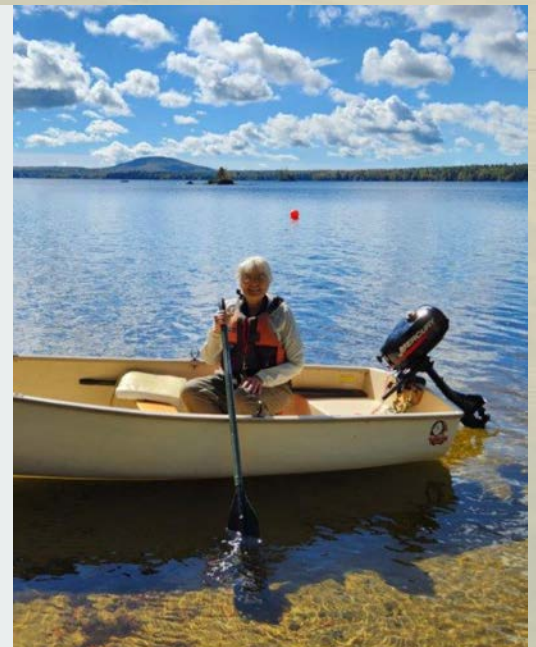
Mary Beth Allen, Bill and Janet Martin, Robin Yurkevicz and Marc Restuccia, Gerald Oliver, Bob Evans, Phil Roberts, Dave and Betty Parsons, Adam Levy, Steve Antell and Robyn Silberstein



Wanted: IPP Coordinator

Do you enjoy exploring Toddy Pond? Beginning in 2023, TPA will need a new volunteer Invasive Plant Patrol Coordinator. This volunteer position entails assigning or confirming pond sectors (most are already assigned), getting new people started, checking suspicious plants found and sending in completed forms at season's end. Active season is July 1- Sept 15. Lucy will be available to help with 2023 transition, training and Plant ID. If you can help out with this vital part of Toddy Pond preservation, please email

lucy@toddypond.org
or call 207-266-3212.





Catherine Davis-Tilton

Phone: (207) 848-7027
Cell: (207) 745-8546

CMAuctionCenter.com

44 Concord Drive, Herman, ME 04401

A Huge **THANK YOU** to all our Sponsors and Contributors! To learn how you can join in and help support the TPA in its mission to protect and preserve Toddy Pond, please contact:
Lucy Leaf
(207) 266-3212
lucy@toddypond.org



KAYAK, SUP, AND CANOE RENTALS

We Deliver!

207-374-3600

www.theactivityshop.com

Chris Muise-Owner info@theactivityshop.com

139 Mines Road, Blue Hill, Maine 04614



MAINE REAL ESTATE
BROKERAGE

George MacLeod · Principal Broker · 207-944-8771
mainemacleod@gmail.com · www.mainerealestatebrokerage.com
63 Main Street, Bucksport, Maine 04416



Your partner in philanthropy

A Special Thank You to
Ram Island Conservation Fund

Dan Burpee
Broker



Two Rivers Realty, LLC

PO Box 875
169 US Route 1
Bucksport, ME 04416

tworiversdanb@gmail.com

207-735-5337 cell
207-469-9930 office
207-469-7964 fax



CHRISTOPHER W. CLOSS
AND COMPANY

CLOSSPRESERVATION@GMAIL.COM

27 SHORT POINT ROAD
PENOBSCOT, ME 04476

207-812-1375



COMMUNITY BASED LAND CONSERVATION SINCE 1985

BLUE HILL
HERITAGE TRUST

SERVING BLUE HILL • BROOKLIN • BROOKSVILLE • CASTINE • PENOBSCOT • SEDGWICK • SURRY

Support TPA By Using AmazonSmile

AmazonSmile is a simple way for you to support your favorite charitable organization (TPA!) every time you shop, at no cost to you. AmazonSmile is available at smile.amazon.com on your web browser and can be activated in the Amazon Shopping app for iOS and Android phones. When you shop with AmazonSmile, you'll find the exact same convenient shopping experience as Amazon.com, with the added benefit that AmazonSmile will donate 0.5% of your eligible purchases to the charitable organization of your choice. On your first visit to AmazonSmile, you will be prompted to select a charitable organization (Toddy Pond Association) to receive donations from your future eligible AmazonSmile purchases. AmazonSmile will remember your selected charity whenever you shop at smile.amazon.com and then every eligible purchase you make through AmazonSmile will result in a donation for your selected charity. **Please sign up today!**



SWAN AGENCY
REAL ESTATE

TAMMY THURLOW | Realtor®

Sales Agent

207.288.5818 (O) 207.610.0209 (C)
tammy.thurlow@swanagency.com

A Toddy Pond local helping residents with their buying & selling needs!

www.swanagency.com



STORAGE • SERVICE • REPAIR • BROKERAGE

(207) 460 - 5866

"Personal Service at it's Best"

780 Acadia Highway, Orland

www.penbaymarineservices.com

yachtservices@hotmail.com

Counting down the days til summer...
Ready to assist sellers and buyers on Toddy Pond.



PEMETIC
PURVEYORS

Finer Real Estate Services

207-667-SELL(7355)
Ryan@PematicPurveyors.com

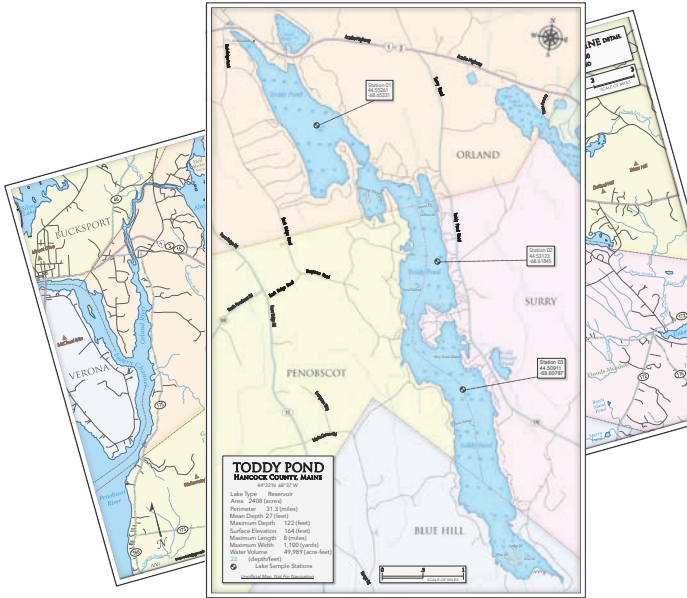
Julee & Ryan Swanson
www.PematicPurveyors.com

PO Box 22, Ellsworth, Me 04605

Got Your Toddy Pond Map?

Two-sided, 11 by 17 inches, laminated maps available for pick-up!

Contact us at: donna@toddypond.org



Treasurer Needed!

Are you good with numbers?
Please contact Barb Leaf at:
leafan@comcast.net or
(802) 734-4102 for details.

Training provided.
Become part of the Toddy Pond
Association team.

Alamoosook Invasive Is Still A Mystery

Many hours were spent surveying, collecting and submitting suspicious plants this summer from Alamoosook Lake following the discovery of a plant last summer that tested positive as an invasive, the first to be found in Hancock County. One year later, we seem no closer to knowing if Alamoosook is really infested or not. How can that be?

This is the problem. The original plant, as well as others found in the same area off a group of islands, are testing positive as invasive variable water-milfoil. However, all the experts agree that the plants look nothing like variable milfoil. They look almost exactly like another common native milfoil called alternate-flowered milfoil, which is also very common in Toddy and throughout our county. To complicate matters further, the alternate-flowered milfoil found elsewhere in Alamoosook, plentiful and assumed to be native, does NOT test as invasive. Looking for a second opinion, samples of both (with the exact same appearance) have recently been sent to a different lab which uses a different kind of DNA testing method. Results may take several weeks.

Meanwhile, samples from Toddy have also been sent in for evaluation, since everything is so uncertain. The experts are speculating that the native plant may have hybridized with an invasive. The good news is that so far, no variable water-milfoil that actually looks like variable milfoil, the most common invasive plant in Maine, has been found in Alamoosook. The invasive we know from lakes beyond Hancock County looks VERY different. And virtually everyone agrees on that. **Stay tuned!**

TPA MEMBERSHIP FORM

for calendar year 2022

New Member

Returning Member

Name(s) _____ Phone(s) _____

Seasonal Address _____ City/State/Zip _____

Permanent _____ City/State/Zip _____

Email Address(es) _____

MEMBERSHIP DUES Please check the appropriate boxes.

Friend Membership \$10/year Family Membership \$30/year Subtotal _____

DONATIONS (Dues and donations are fully deductible. Toddy Pond Association is a 501(c)3 tax-exempt organization.)

Protector (\$31-\$99) Steward (\$100-\$199) Advocate (\$200-\$499) Benefactor (\$500+) TOTAL _____

If you have included a donation, may we publish your name as a contributor? Yes No

Make checks payable to The Toddy Pond Association at: PO Box 645, Blue Hill, Maine 04614 or pay online at: toddypond.org. **Thank You!**

Please contact me to help out with the following activities:

Loon Count Dam Plant Patrol Boat Inspections Annual Meetings Fundraising _____

Position Open: Love your lake?

Get paid to protect it and others regionally.
Work with TPA Board members to learn grant writing and management of TPA Courtesy Boat Inspection and other programs, leading to possible lake preservation opportunities county-wide.
Part-time variable work Feb- Sept.

Contact: lucy@toddypond.org or call 207-266-3212

Toddy Pond Association Board

President	Robyn Silberstein	2023
Vice President	Lucy Leaf	2024
Treasurer	Barbara Leaf	2023
Secretary	Donna Foster	2024
Board Member	Dick Salminen	2023
Board Member	Sarah LeVine	2024
Board Member	Christopher Closs	2024
Board Member	Barry Johnson	2025

Contact board members at: toddy@mail@toddypond.org

