



Strong, silent and effortless  
the Liniar sliding patio door





# Enhance your home with a Liniar patio door

Whether you're looking for a brand new patio door to provide better access to your garden, or you're looking for a replacement door, you'll be amazed at how different the stunning Liniar patio range is from the other doors on the market.

From the moment you touch the Liniar door, you'll be struck by the ergonomic design, the effortless opening mechanism, the smooth motion and the noiseless glide.

Fitted with Liniar's revolutionary multi-wheeled 'air glide' system, the Liniar sliding patio door is perfectly balanced as it moves along its track.

The built-in brushes gently sweep away any minor debris each time the door is closed, aiding its silent action and helping it to maintain efficient operation.

With fully sculptured features providing a beautiful finish, the Liniar patio door's ultra-slim sightlines ensure you enjoy the maximum amount of natural light in your home.

And with a range of colour and handle options, you can personalise your Liniar door to match the rest of your home, making it seem like it was designed just for you!



# Better for the environment

## Energy efficiency explained

One of the most effective ways you can save energy within your home is through installing energy efficient windows, doors and roofs.

Liniar frames outperform most of the other leading brands in the UK when it comes to thermal efficiency – mainly due to our innovative PVCu multi-chambered profile design.

The thermal efficiency of a door is measured in U-values, which demonstrate how effective the door is at preventing the transfer of heat into and out of a building.

The lower the U-value, the higher the doors' effectiveness at keeping the heat inside your home when it's cold outside.

The Liniar patio door can achieve a U-value of 1.3 W/m<sup>2</sup>K, meaning you'll be able to enjoy a warmer and quieter home as well as lower energy bills.



## Lead-free

Liniar profile is made from 100% lead-free PVCu – better for the environment and better for you and your family. You no longer have lead in your petrol or paint, so why choose to have frames containing lead?



Strong, smooth and effortless

# Designed for today's challenges

The Liniar patio door range is beautifully designed for modern living.

Built to create the perfect summer ambience, it's equally as important that our doors withstand the worst of the British winter weather.

We've rigorously tested our patio doors to make sure they exceed the appropriate British Standards for weather performance.

We also subject our doors to a regime of robot cyclic testing in our purpose-built laboratory, making sure all mechanical parts will stand up to the repeated operation necessary for daily living.



“ We've invested in a robot to mechanically open and close the door, really putting the Liniar patio through its paces – we want to prove it's definitely built to last ”



# Engineered for the future - available today

The sliding patio door isn't a new invention...

However, most doors available on the market today are still based on an original design, which means they come with inherent challenges. Who hasn't experienced a patio door that rocks on its track, or one that requires sheer brute force to open? And other patio doors have built a reputation for making it easy for thieves to break in to your home.

The Liniar design team have re-written the rule book with their innovative patio range - engineering in features such as a built-in decelerator and hidden 'crash stops' within the operating mechanism so as not to detract from the beautifully slim lines of the door.

Not only that, the Liniar door is one of the most secure patio doors money can buy. Liniar's patented ModLok™ modular locking mechanism is built in to the frame, delivering unparalleled strength combined with the highest levels of security. No more worries about break-ins, providing you and your family with peace of mind that your home is protected.

We've registered 4 patents and 1 community design to ensure only Liniar customers get all of the benefits from choosing a Liniar patio door.







# Not your standard patio door

If you have a wider opening span, why not consider a 3 or 4-pane patio door?

The supreme strength of the Liniar multi-chambered frames make them perfect for large openings – so conservatories, orangeries and

garden rooms can all benefit from increased light flooding into your home.





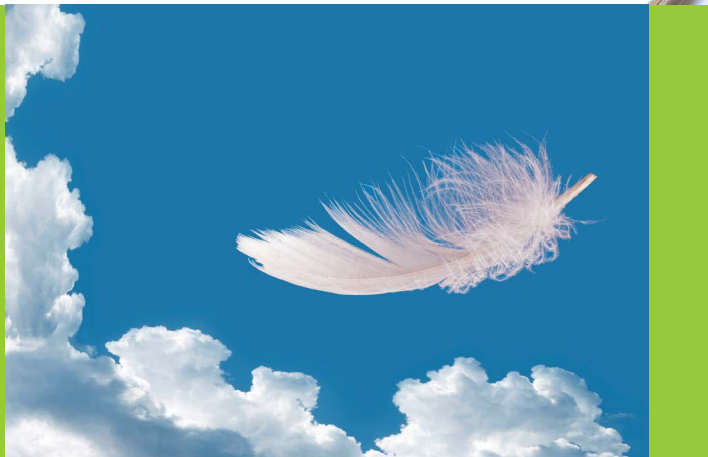
# Uniquely smooth action

The Liniar patio range was designed with our ground-breaking 'air glide' system, giving it a superbly smooth operation.

You'll be amazed at how light the door feels and how easy it is to open and close – not to mention how quiet it is too!

Other patio door systems are operated by just four steel wheels – the Liniar door uses 8 hard-wearing self-lubricating acetal wheels, which makes it feel as though it's floating on air.

You really need to experience this for yourself, so visit your nearest Liniar showroom to find out how our patio door is so different from its competitors.



# Safe as houses

A brand new concept in locking technology, ModLok™ has been developed by Liniar in conjunction with Yale, the trusted brand for locks sold all over the world.

Combining steel reinforcing with a high security locking mechanism, the Liniar patio door offers far greater security than any other product of its type.

With four hook bolts PLUS two shoot-bolts at the top and bottom of the sliding door, the Liniar patio's locking mechanism has been designed so that hooks do not protrude into the room even when the door is open.

To make your Liniar patio door even more secure, you can choose the latest 'anti snap' locking cylinders.

With 3-star security, these cylinders offer even more protection against the more determined would-be intruder using tools to break the cylinder and gain entry by manipulating the lock to open.

Just ask your Liniar installer for details to provide extra peace of mind.

## Better for the environment

Not often considered when buying a new product for your home, ModLok™ technology has a big environmental advantage when the patio doors eventually come to the end of their life. Metal parts included in other PVCu systems mean they cannot easily be recycled without lots of effort to strip them down.

However as ModLok™ comprises seamless steel sections, they are simple to separate once the doors are removed, enabling the PVCu to be recycled faster and with much less effort.



# Family friendly

The ultra-low threshold option creates seamless entrance and exit.

Ideal for family homes and wheelchair-friendly access, the Liniar low threshold is thermally broken, adding to the energy efficiency of your doors.

With a gold or silver finish available to perfectly complement the door hardware.

## Low maintenance

With a set of Liniar patio doors you can rest assured that you won't need to spend hours looking after them to maintain their beauty.

Our 10 year guarantee gives you the peace of mind that the colours won't fade – and not only that, you won't need to treat or paint them each year to keep them in tip top condition. Just an occasional wipe down with soapy water is all they need to keep them looking their best.



# Accessories to suit you

Additional options to consider when choosing your Liniar patio door.

## Thresholds

The standard frame is available in colours to match your door.



## Thermally broken low threshold

Choose our thermally broken aluminium low threshold in silver or gold to co-ordinate with your door hardware.



## Handles

Choose from white, black, gold or chrome handles for your patio to co-ordinate with the rest of your accessories and to match your home and lifestyle.



# Personalise your Liniar patio

The Liniar range of patio doors is available in a huge variety of colour options, with additional colours available upon request.

Our wood-grain foils give the authentic appearance of timber without the maintenance, and are precision factory-fitted, so you'd be forgiven for thinking your frames were actually made of wood.

The whole range comes with the Liniar 10-year frame guarantee against fading, cracking or warping.



The colours shown in this brochure give an indication only. No guarantee can be given that they will exactly match the product. Ask your sales representative for a Liniar colour swatch.

Additional colours are available to order as specials

# Liniar's different

The newest brand of PVCu frames on the market, Liniar was created by bringing together some of the window industry's most experienced and forward thinking designers with over 500 years of industry experience between them.

With a focus on research, development and design, Liniar continues to push the boundaries when it comes to product innovation.

Our innovation team wanted to create a brand new concept in patio doors – one that could offer all the benefits of aluminium or timber, with the additional benefits of energy efficient and low maintenance PVCu. So we designed the Liniar patio range from scratch, looking at every aspect from manufacture, through to installation and continued use.

Liniar isn't constrained, either by history or by corporate politics. Privately owned, with a flat structure, we're able to respond to customer demands quickly and effectively, giving the brand a well-deserved reputation of excellence within the windows, doors and roofs industry.

Embedded in our culture is an ethos of constant innovation and development, which means Liniar customers always have access to the most forward-thinking products on the market.

## Made in Britain

Unlike many of our competitors, Liniar PVCu profile is made in the heart of Britain.

Our extrusion facility in Derbyshire boasts the largest mixing plant in Europe, and continued investment in the factory, facilities and research and development keeps Liniar at the forefront of innovation.



# 7 great reasons to choose Liniar

**Innovative** - the only entirely new PVCu window and door profile system to be developed in the last 10 years

**Energy efficient** - designed from scratch to achieve the pinnacle of thermal performance and retain more heat in your property

**Safe and secure** - engineered with built-in security features and approved by independent testing facilities

**British made** - frames are extruded in our state-of-the-art factory in the heart of Derbyshire

**Lead free** - all Liniar profiles are extruded using materials that are 100% lead free

**Quality assured** - backed with ISO 9001 accreditation for your peace of mind

**Guaranteed** - all Liniar frames are guaranteed to not warp, split or discolour for a minimum of 10 years



Your Liniar stockist is:

**Liniar**  
Flamstead House  
Denby Hall Business Park  
Denby  
Derbyshire DE5 8JX

Tel: +44 (0)1332 883900  
Fax: +44 (0)1332 883901  
Email: [sales@liniar.co.uk](mailto:sales@liniar.co.uk)

[www.liniar.co.uk](http://www.liniar.co.uk)

