

TUBAC NATURE PRESERVE

SURVEY RESULTS REPORT

February 23, 2023

Prepared by Oscar Rodriguez Ponce
2nd-year Master's of Landscape Architecture



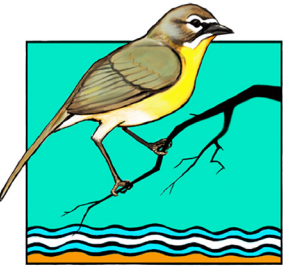
THE UNIVERSITY OF ARIZONA
College of Architecture, Planning
& Landscape Architecture



NPS RTCA

RIVERS, TRAILS & CONSERVATION
ASSISTANCE PROGRAM

www.nps.gov/rtca



TUBAC NATURE CENTER



SURVEY RESULTS SUMMARY

...and want the following **BENEFITS** for the Tubac community

How many people did we reach?



EDUCATIONAL OPPORTUNITIES



MORE TOURISM



HEALTHY RIVER



MORE SOCIALIZING

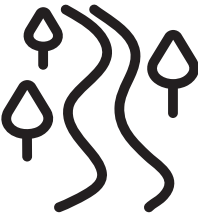
People want to **ENHANCE** existing uses and features...



BIRDING



“NATURAL FEEL”

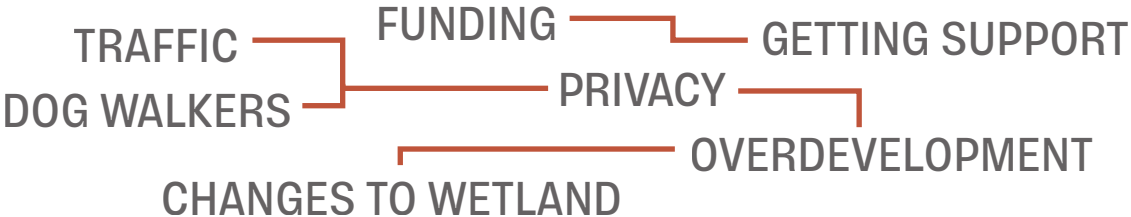


HIKING / WALKING



ECOSYSTEMS

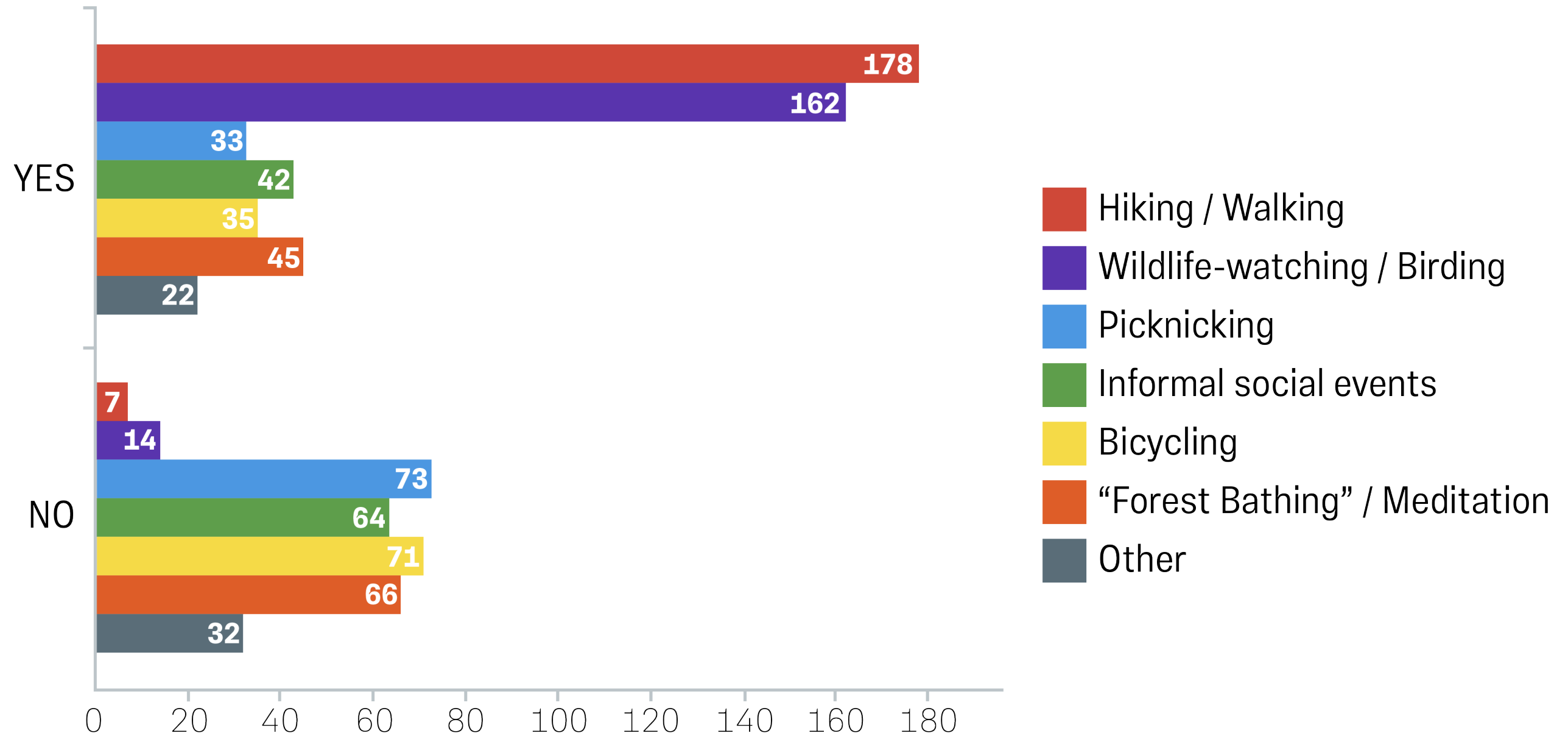
Most **CONCERNS** have to do with...



1) Have you participated in any of the following activities in the area within the black boundary line?

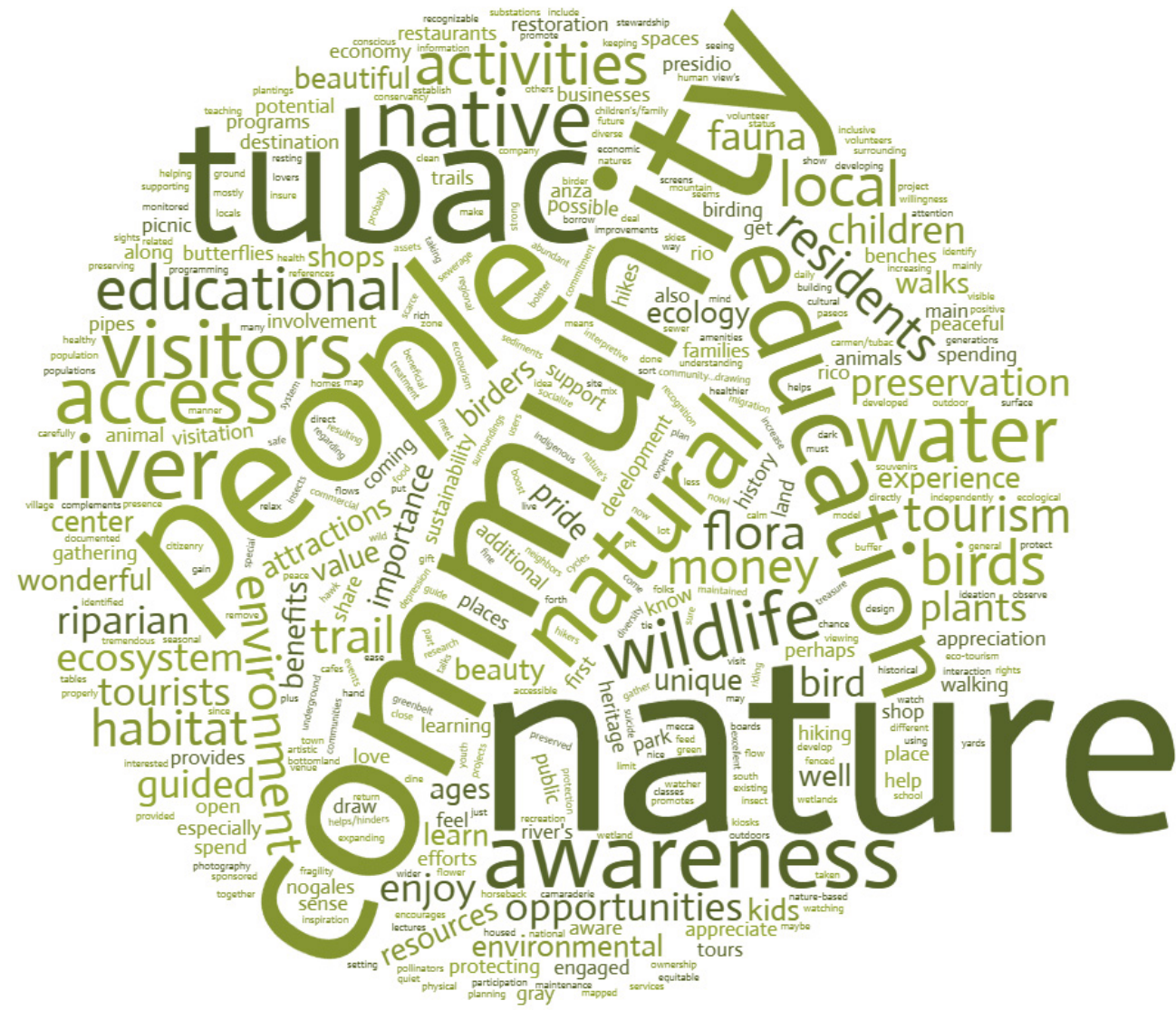
Most people use the area for *recreational uses*.

Despite the low numbers on picnicking, there is a *strong demand for picnic tables and areas*.



3) What community benefits would you like to see from this project? (text entry)

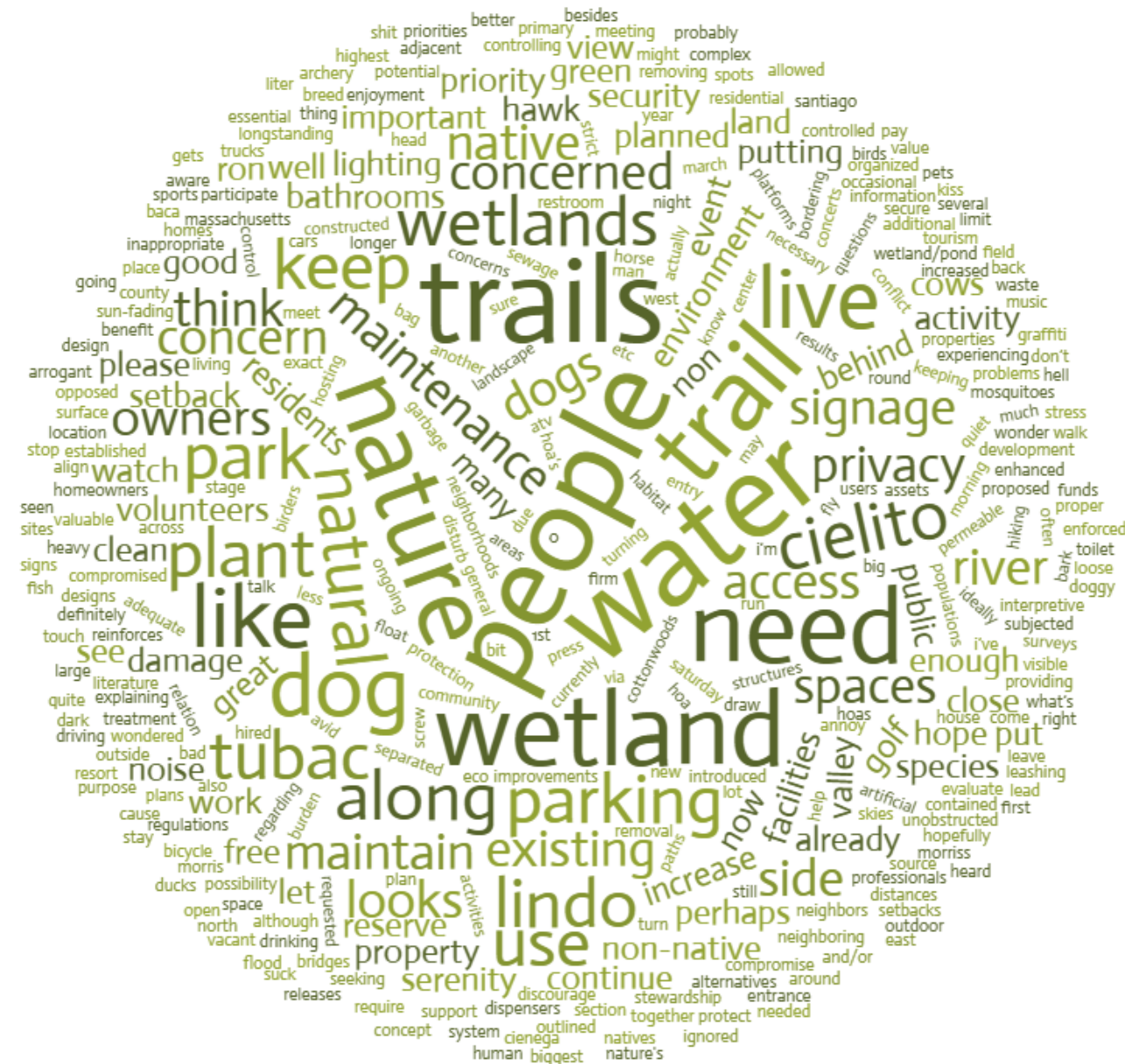
Preserving nature, new amenities and spaces, social and educational benefits, and economic benefits are listed.



- 1** Nature/natural - 35 mentions
- 2** Educational/education - 28 mentions
- 3** Community - 21 mentions
- 4** Tubac - 17 mentions
- 5** Tourism/visitors - 17 mentions
- 6** River - 9 mentions
- 7** Awareness - 9 mentions
- 8** Water - 8 mentions
- 9** Wildlife - 7 mentions
- 10** Money - 5 mentions

4) What concerns or comments do you have for this initial concept plan? (text entry)

Most concerns relate to *access & parking, the wetland, funding and maintenance, and misuse of the preserve.*

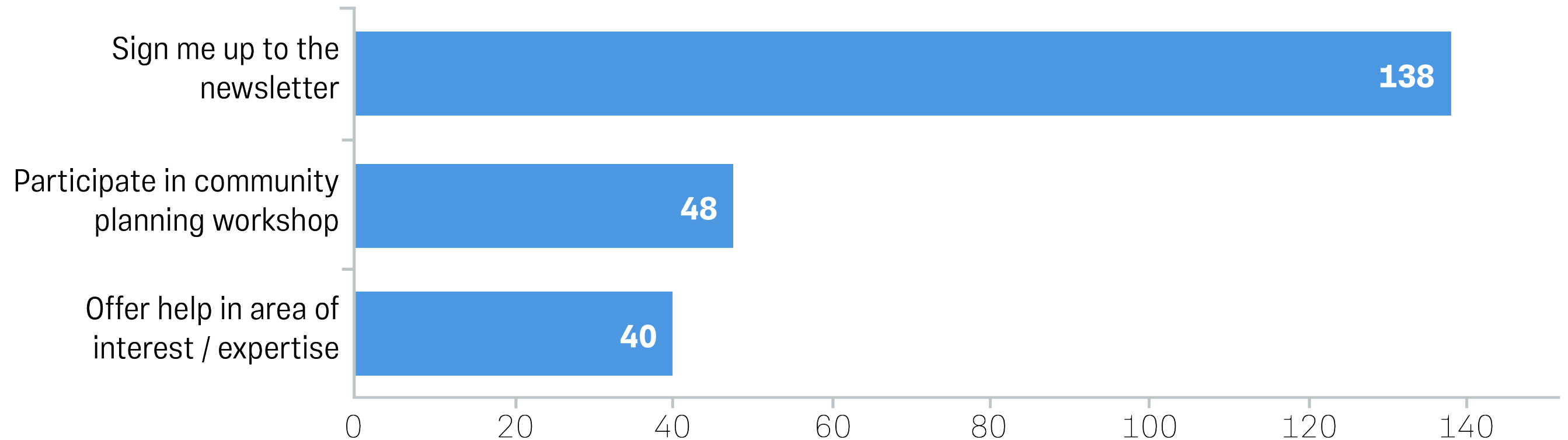


- 1** Trails - 20 mentions
- 2** Parking/traffic - 15 mentions
- 3** Wetland(s) - 13 mentions
- 4** Access - 11 mentions
- 5** Natural - 11 mentions
- 6** Dog(s) - 10 mentions
- 7** People - 8 mentions
- 8** Volunteers/support - 8 mentions
- 9** Cielito Lindo - 6 mentions
- 10** Funding/money - 6 mentions

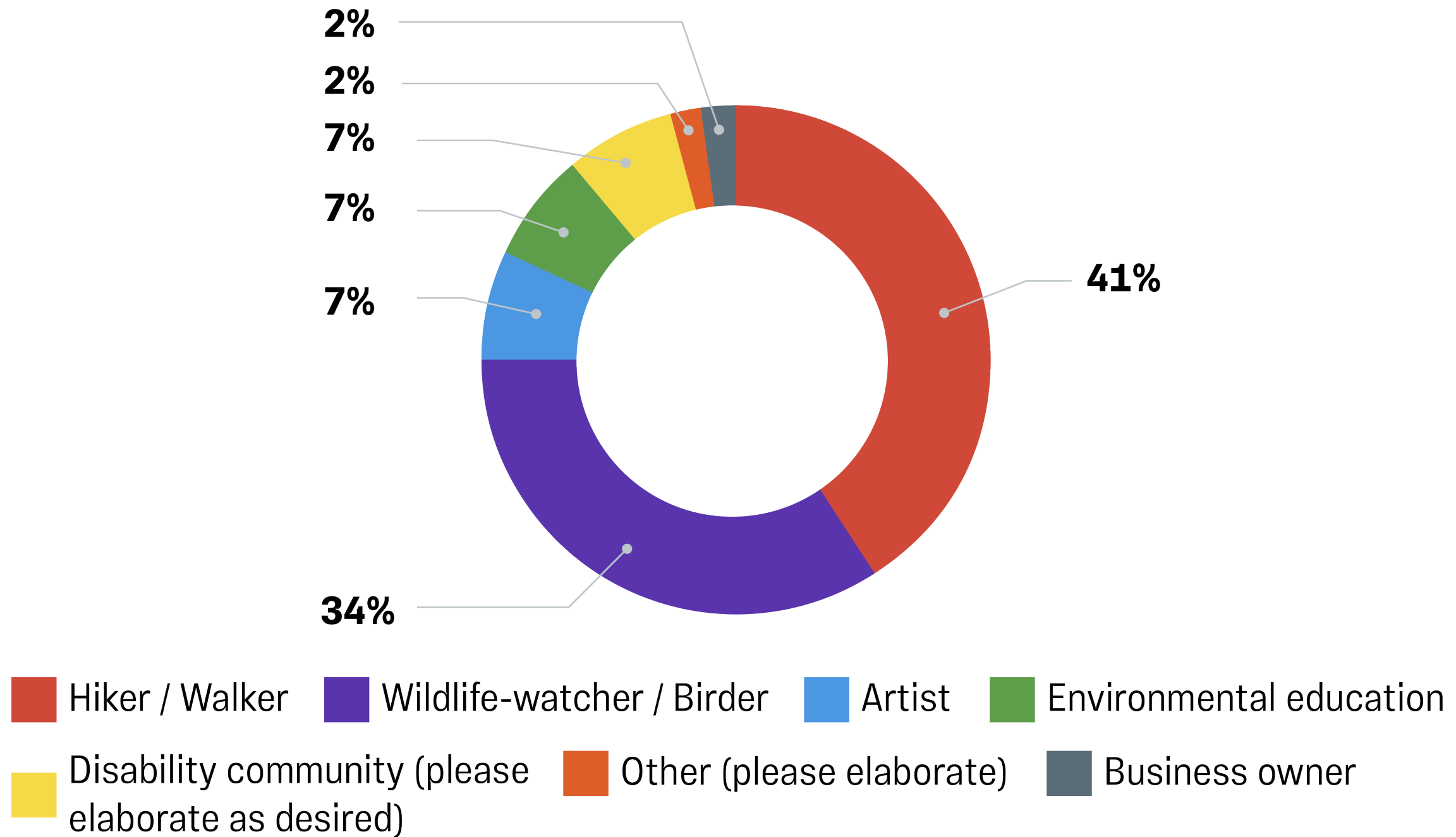
5) Let us know how you would like to be involved, and what skills or expertise you would like to offer.

Most respondents showed interest in the project in one way or another. Multiple people are willing to help with *educational programs, site construction, publicity, and much more*.

This information is conveyed in great detail on the Excel table associated with this presentation, along with the results of Q6) Contact information and proximity to project, in order to facilitate communication with people willing to engage more closely with the Nature Preserve.



7) Do you identify yourself or anyone in your household as any of the following?



7) Disability community

Only six respondents specified a disability. These are all the responses for this question.

“Family members with dementia and extreme medical issues”

“Mobility constraints”

“Walk with a cane”

“Use walker and scooter”

“I have three girlfriends in wheelchairs that I hope will be able to finally access this area”

“Mobility challenges”

7) Other - Fill in the blank

1 Nature lover / Outdoor enthusiast - 4 mentions

2 **Photographer** - 4 mentions

3 Volunteer - 2 mentions

Dark sky advocate

Publisher

Pima County master naturalist

Butterfly enthusiast

Gadfly

Anza Trail maintenance

Board member - Community Garden of Tubac

President, Friends of Sonoita Creek

Dog walker

Horseback rider

Biker

Botanist, mycologist

Daughter and grandsons of Tubac resident

Visitor

Heritage advocate

Gardener

Master naturalist in Michigan

Docents at AZ-Sonora Desert Museum

8) What age groups are present in your household? (check all that apply)

Only 11% of respondents have members in their household younger than 55 years of age. However, many respondents still called for greater attention to kids and educational programs.

