

PREFERRED SERIES



Mid Pines

Modern Style. Smart Design. Exceptional Value.



Suncrest Ridge

The Preferred Series offers a collection of thoughtfully designed homes featuring open living spaces, upgraded kitchens and baths, and durable construction built for long-term comfort. With modern finishes, energy-efficient materials, and a range of popular floor plans, the Preferred Series delivers exceptional value for today's homebuyers looking for style, quality, and affordability.

Structural Features

- R 30 Batt Insulation in Ceiling
- R-19 Insulation in Walls
- Wind Zone 115 VULT
- OSB Floor Decking 23/32"
- (2 X 10) Floor Joist 16" OC
- (2 X 6) 9' Sidewalls 16" OC
- (2 X 6) Top & Bottom Plates
- (2 X 4) 9' Double Marriage Walls
- Engineered Roof Systems
- 7/12 Roof Pitch 24" OC on Ranch Models
- 10/12 24" OC Std on 5628D and 6028K Models.

Plumbing

- Water Shut-Off Valves
- Pex Plumbing System
- 50 Gallon Water Heater
- Exterior Frost-Free Water Faucet (1 @ STD Location Per Plan)
- Whole House Water Shut-Off
- Washer Hook-Up
- Kitchen Pull Out Faucet

Baths

- 4'x8' Ceramic Shower, Bath 1 (Per Plan)
- 8"x48" Transom Window on 4'x8' Ceramic Shower Wall (bath1) Per Plan
- 60" Fiberglass Tub/Shower, Hall Bath
- White Shaker Style Vanity Cabinets
- 36" High Lavatory(s) in Bath 1
- 36" High Lavatory in Bath 2
- Towel Bar/Tissue Holder All Baths
- Dual Lever Bath Faucets
- Cultured Marble Lavatories with Bowls

Exterior Features

- D5 Vinyl Siding
- 15" Raised Panel Shutters or 3 1/2" Window Lineals (Front Door Side)
- 7/16" OSB Wrap Exterior Walls
- 36" 6 Panel Front Door w/No Storm
- 36" 6 Panel Rear Door w/No Storm (Per Plan)
- 12" Eave Overhangs (All Sides)
- Insulated Windows Gridless
- House Wrap
- Limited Lifetime Architectural Shingles

Kitchen

- 30" Smooth Top S/S Range
- 25 CF Side by Side Refrigerator S/S w/Icemaker
- S/S Dishwasher
- S/S Spacesaver Microwave
- 60/40 Stainless Steel Kitchen Sink
- Laminate Countertop w/ Full Ceramic Backsplash & Ideal Edging
- 36" Overhead Cabinets w/Matching Cove Molding
- Shaker Style Cabinets
- Kitchen Island White Shaker Style Cabinets with Beadboard
- Double Trash Can Base Cabinet in Island (Per Plan)
- Pot and Pan Drawer Base Cabinet in Island (Per Plan)
- Raised Wall Cabinet over Range
- (2) Pendant lights w/ Separate Switch over Kitchen Island

Flooring

- 25 oz. Carpet w/ Pad & Tack Strip (Shipped Loose)
- 6 lb. Re-Bond carpet Pad
- Congoleum Flooring in Designated Areas (Per Plan)

Interior Appointments

- 1/2" High Strength Sheetrock Ceilings w/Smooth Finish
- (2 X 4) Interior Wall Construction
- 36" Interior Doors M/Bedroom, MBR Closet & M/Bath
- Mortised Door Hinges
- 3 1/2" Crown Molding
- 6" Baseboard Molding
- 2 1/4" Window/Door Casing
- Metal Shelf over Washer/Dryer
- Finished 1/2" Sheetrock Thru-out
- Lever Interior Door Hardware
- Shoe Rack with Shirt & Skirt Shelves in Master Bedroom Closet (Per Plan)
- Laminate Top Table in Utility (Per Plan)

Electrical

- Surface Mount LED Recessed Light Ceiling Fixtures T/O
- Ceiling Fans in Bedroom 1, Living Room and Family Room per plan.
- Exterior Light (@ Exterior Doors)
- Exterior Electrical Outlet (@ Exterior Doors)
- 200 AMP Panel Box
- Smoke Detector Systems
- Dryer Hook-up with recessed exhaust box
- 110V Outlet Receptacle in Utility Room Storage Closet (Per Plan)
- 1 1/4" Conduit Running Down from Electrical Panel Box for Future Use

Popular Options

- Quartz Kitchen Countertops
- Angled Kitchen - Per Plans
- "L" Kitchen - Per Plans
- Craftsman Interior Trim
- Alternate Master Bath Plans
- 6" Ceramic Backsplash on Laminate Tub Platform M/Bath
- Vent-less Gas Fireplace w/ TV Niche Bookcase Cabinetry
- Farmhouse Exterior Package
- Farmhouse Interior Package
- Vinyl Plank Flooring
- 150 VULT Wind Zone
- 10/12 Roof Pitch 24" OC (where available)
- Black Exterior Windows
- Craftsman Front Door
- Board & Batten Siding
- 16" OC Roof Trusses
- Sliding Glass Door(s)
- Congoleum Vinyl Floor ILO Carpet in Family Room
- Brace and Switch for Ceiling Fans-Additional



Elevation Shown with Optional and On-Site Builder Supplied Items. Consult Your Builder for Pricing.



Cypress Point

Preferred Series

1824 Sq. Ft. • 3 Beds • 2 Baths
Model 6828A HBSP R



revision 3.5.26

The floor plans & elevations are for illustration purposes only. Refer to working drawings for actual dimensions. © 2026 Holmes Building Systems, LLC



Elevation Shown with Optional and On-Site Builder Supplied Items. Consult Your Builder for Pricing.

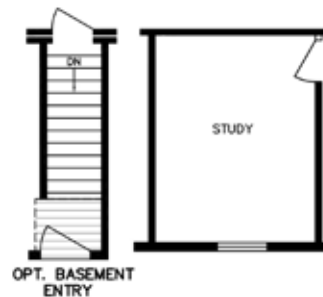
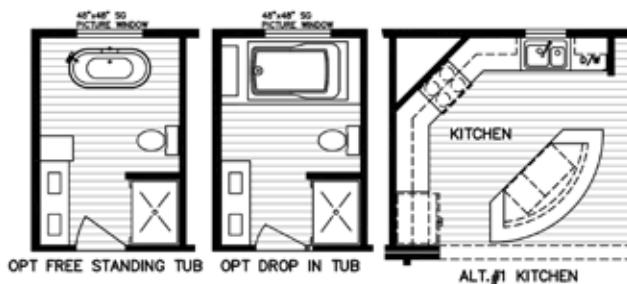
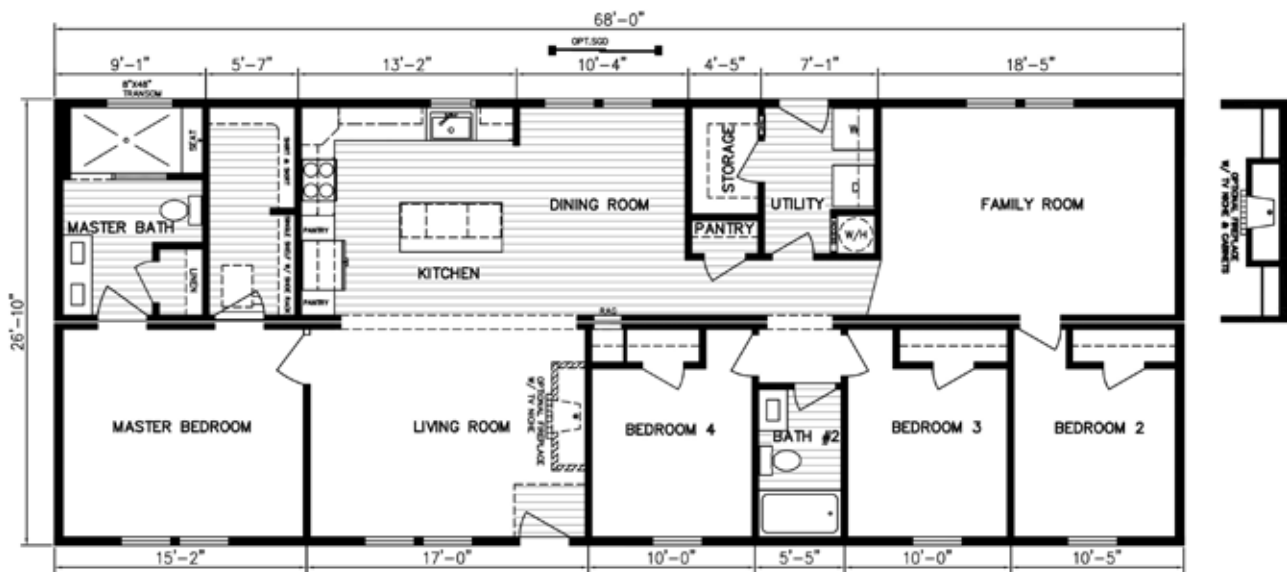


Cypress Point II

1824 Sq. Ft. • 4 Beds • 2 Baths

Model 6828C HBSP R

Preferred Series



revision 3.5.26

The floor plans & elevations are for illustration purposes only. Refer to working drawings for actual dimensions. © 2026 Holmes Building Systems, LLC



Elevation Shown with Optional and On-Site Builder Supplied Items. Consult Your Builder for Pricing.

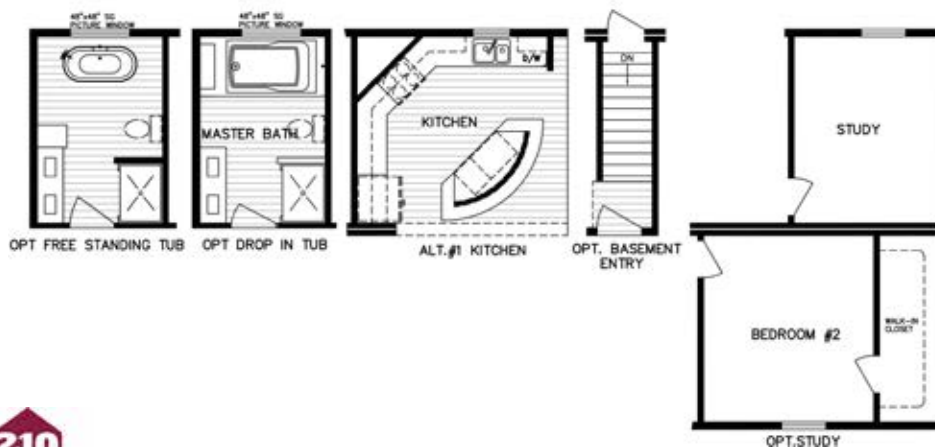


Cypress Point III

1610 Sq. Ft. • 3 Beds • 2 Baths

Preferred Series

Model 6028J HBSP R



revision 3.5.26



Elevation Shown with Optional and On-Site Builder Supplied Items. Consult Your Builder for Pricing.

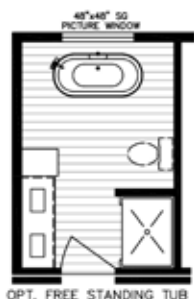


Diamond Creek

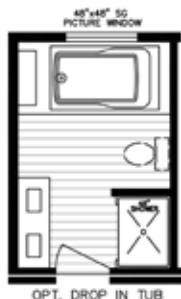
Preferred Series

1503 Sq. Ft. • 3 Beds • 2 Baths

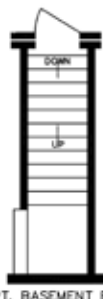
Model 5628D HBSP BR



OPT. FREE STANDING TUB



OPT. DROP IN TUB



OPT. BASEMENT ENTRY





Elevation Shown with Optional and On-Site Builder Supplied Items. Consult Your Builder for Pricing.

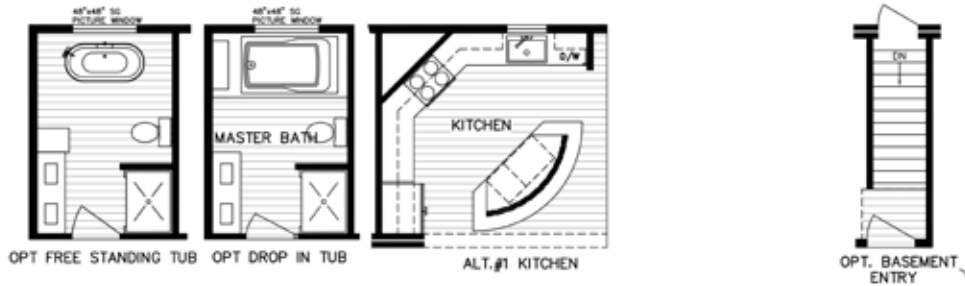
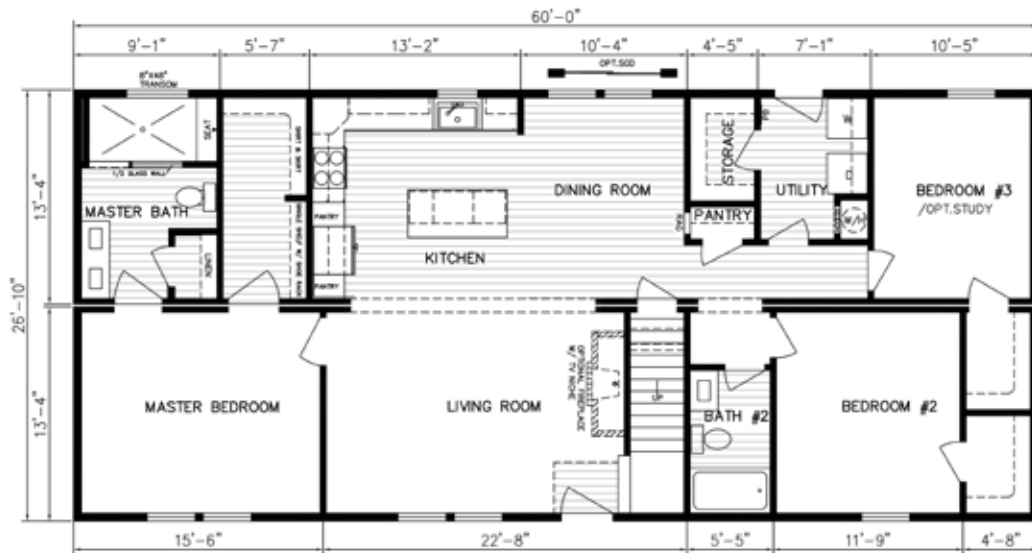


Double Eagle

1610 Sq. Ft. • 3 Beds • 2 Baths

Model 6028K HBSP R

Preferred Series





Elevation Shown with Optional and On-Site Builder Supplied Items. Consult Your Builder for Pricing.



Mid Pines

Preferred Series

1810 Sq. Ft. • 3 Beds • 2 Baths
Model 6032 HBSE



revision 3.6.26



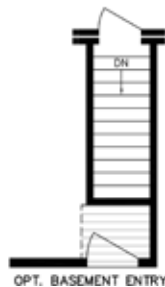
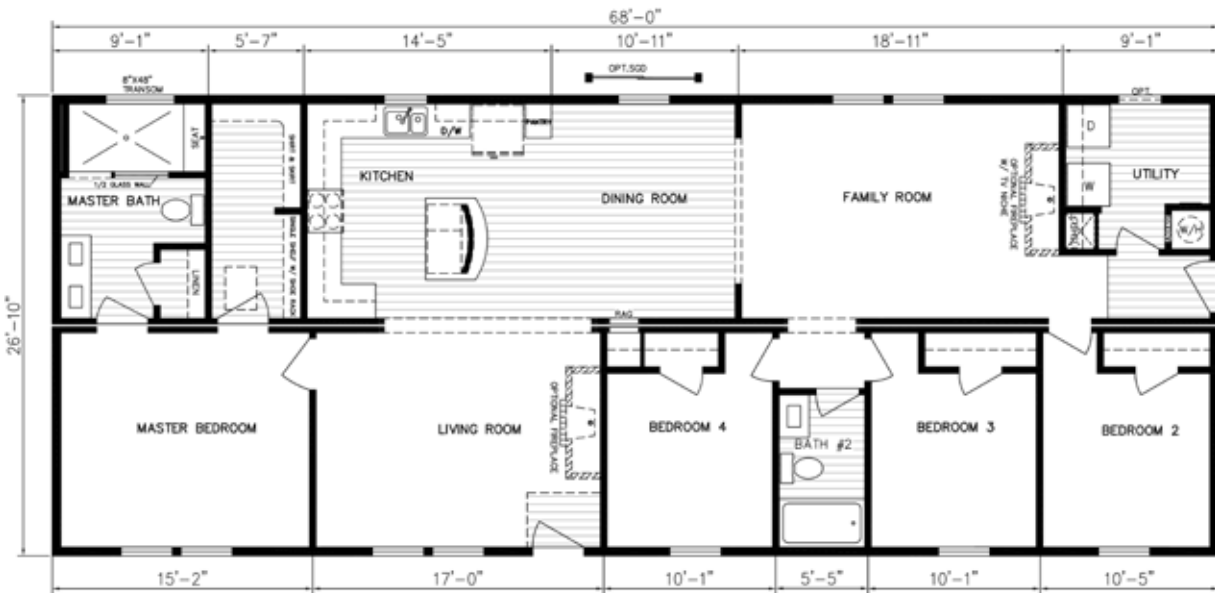
Elevation Shown with Optional and On-Site Builder Supplied Items. Consult Your Builder for Pricing.



Oakmont

Preferred Series

1824 Sq. Ft. • 4 Beds • 2 Baths
Model 6828B HBSP R





Elevation Shown with Optional and On-Site Builder Supplied Items. Consult Your Builder for Pricing.



Pebble Beach

Preferred Series

1610 Sq. Ft. • 3 Beds • 2 Baths
Model 6028H HBSP R



revision 3.5.26

The floor plans & elevations are for illustration purposes only. Refer to working drawings for actual dimensions. © 2026 Holmes Building Systems, LLC



Elevation Shown with Optional and On-Site Builder Supplied Items. Consult Your Builder for Pricing.



Shadow Creek

1503 Sq. Ft. • 3 Beds • 2 Baths

Preferred Series

Model 5628C HBSP R



revision 3.5.26



Elevation Shown with Optional and On-Site Builder Supplied Items. Consult Your Builder for Pricing.

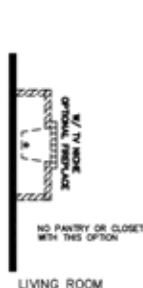
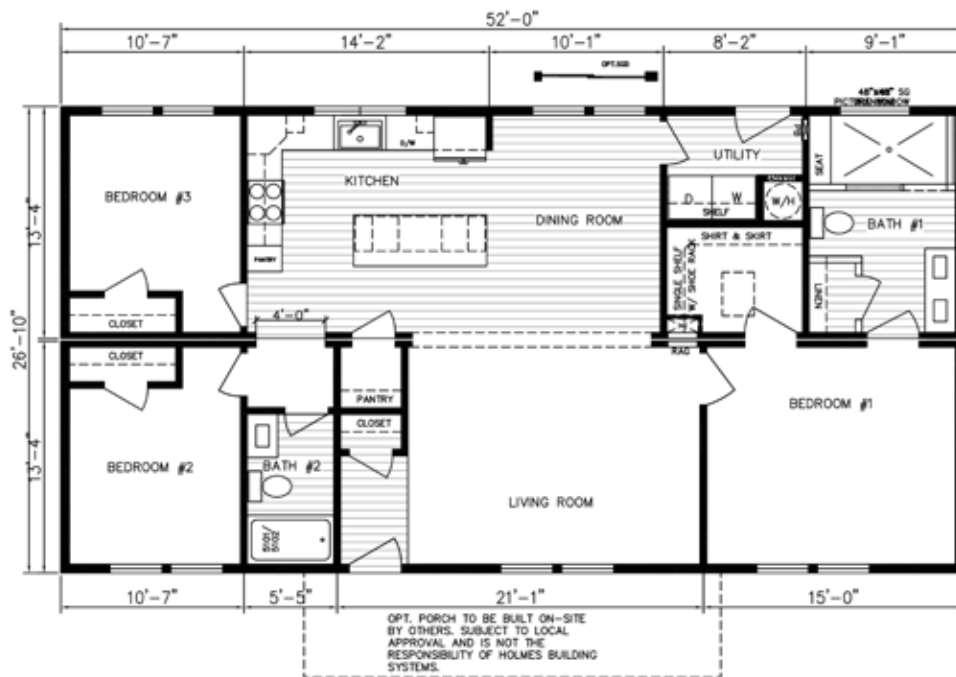


Suncrest Ridge

1395 Sq. Ft. • 3 Beds • 2 Baths

Preferred Series

Model 5228E HBSP R





Elevation Shown with Optional and On-Site Builder Supplied Items. Consult Your Builder for Pricing.



Torrey Pines

Preferred Series

1476 Sq. Ft. • 3 Beds • 2 Baths
Model 5628A HBSP



revision 2.6.26



Your approved Holmes Building Systems Home Builder:

A large, empty rectangular box with a thin black border, intended for the name of the approved Holmes Building Systems Home Builder.



Holmes Building Systems, LLC. 2863 Old Plank Rd. Robbins, NC 27325

HolmesModular.com