

# PREFERRED SERIES by Holmes Building Systems





# Preferred Series

## “Standard Building Specifications”

### Structural Features

- R 30 Batt Insulation in Ceilings
- R-19 Insulation in Walls
- Wind Zone 115 VULT
- OSB Floor Decking 23/32”
- (2 X 10) Floor Joist 16” OC
- (2 X 6) 8’ Sidewalls 16” OC
- (2 X 6) Top & Bottom Plates
- (2 X 4) 8’ Double Marriage Walls
- Engineered Roof Systems
- 7/12 Roof Pitch 24” OC on Ranch Models.
- 10/12 24” OC Std on 5628D and 6028K models.

### Plumbing

- Water Shut-Off Valves
- Pex Plumbing System
- 50 Gallon Water Heater
- Exterior Frost-Free Water Faucet (1 @ STD Location Per Plan)
- Whole House Water Shut-Off
- Washer Hook-Up
- Kitchen Pull Out Faucet

### Baths

- 48” Fiberglass Shower, M/Bath (Per Plan)
- 60” Fiberglass Tub/Shower, Hall Bath
- 72” Drop-In Tub M/Bath (Per Plan)
- 6” Ceramic Backsplash on Laminate Tub Platform M/Bath
- 48”x48” Window over Tub M/Bath (Per Plan)
- White Shaker Style Vanity Cabinets
- 36” High Lavatory(s) in M/Bath
- 36” High Lavatory in Bath 2
- Towel Bar/Tissue Holder All Baths
- Dual Lever Bath Faucets
- Cultured Marble Lavatories in Baths

- Alternate Master Bath Plans
- Vent-less Gas Fireplace w/ TV Niche Bookcase Cabinetry
- Farmhouse Exterior Package
- Farmhouse Interior Package
- Vinyl Plank Flooring

### Exterior Features

- D5 Royal Vinyl Siding
- 15” Raised Panel Shutters or 3 1/2” Window Lineals (Front Door Side)
- 7/16” OSB Wrap Exterior Walls
- 36” 6 Panel Front Door w/No Storm
- 36” 6 Panel Rear Door w/No Storm (Per Plan)
- 12” Eave Overhangs (All Sides)
- Insulated Windows Gridless
- House Wrap
- Limited Lifetime Architectural Shingles

### Kitchen

- S/S Dishwasher
- S/S Spacesaver Microwave
- 60/40 Stainless Steel Kitchen Sink
- Laminate Countertop w/ Full Ceramic Backsplash & Ideal Edging
- 30” Overhead Cabinets w/Matching Cove Molding
- Shaker Style Cabinets (Colors- White, Gray, Espresso)
- Kitchen Island White Shaker Style Cabinets with Beadboard
- Double Trash Can Base Cabinet in Island (Per Plan)
- Pot and Pan Drawer Base Cabinet in Island (Per Plan)
- Raised Wall Cabinet over Range

### Flooring

- 25 oz. Carpet w/ Pad & Tack Strip (Shipped Loose)
- 6 lb. Re-Bond carpet Pad
- Congoleum Flooring in Designated Areas (Per Plan)

### Available Options Per Plan

- 150 VULT Wind Zone
- 10/12 Roof Pitch 24” OC (where available)
- 9’ Sidewalls (Incls 36” Overhead Cabinets in Kitchen)
- 16” OC Roof Trusses
- 30” Smooth Top S/S Range
- 25 CF Side by Side Refrigerator S/S w/Icemaker.

### Interior Appointments

- 1/2” High Strength Sheetrock Ceilings w/Smooth Finish
- (2 X 4) Interior Wall Construction
- 36” Interior Doors M/Bedroom, MBR Closet & M/Bath
- Mortised Door Hinges
- 3 1/2” Crown Molding
- 6” Baseboard Molding
- 2 1/4” Window/Door Casing
- Metal Shelf over Washer/Dryer
- Finished 1/2” Sheetrock Thru-out
- Lever Interior Door Hardware
- Shoe Rack with Shirt & Skirt Shelves in Master Bedroom Closet (Per Plan)
- Laminate Top Table in Utility (Per Plan)

### Electrical

- Surface Mount LED Can Light Ceiling Fixtures T/O
- Standard Ceiling Fans in Bedroom 1, Living Room and Family Room per plan.
- Exterior Carriage Light (@ Exterior Doors)
- Exterior Electrical Outlets (@ Exterior Doors)
- 200 AMP Panel Box
- Smoke Detector Systems
- Dryer Hook-up with recessed exhaust box
- 110V Outlet Receptacle in Utility Room Storage Closet (Per Plan)
- 1 1/4” Conduit Running Down from Electrical Panel Box for Future Use

- Sliding Glass Door(s)
- (2) Pendant lights w/ Separate Switch over Kitchen Island
- Congoleum Vinyl Floor ILO Carpet in Family Room
- Brace and Switch for Ceiling Fans-Additonal



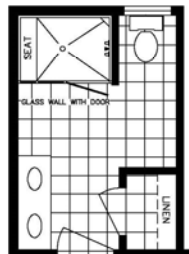
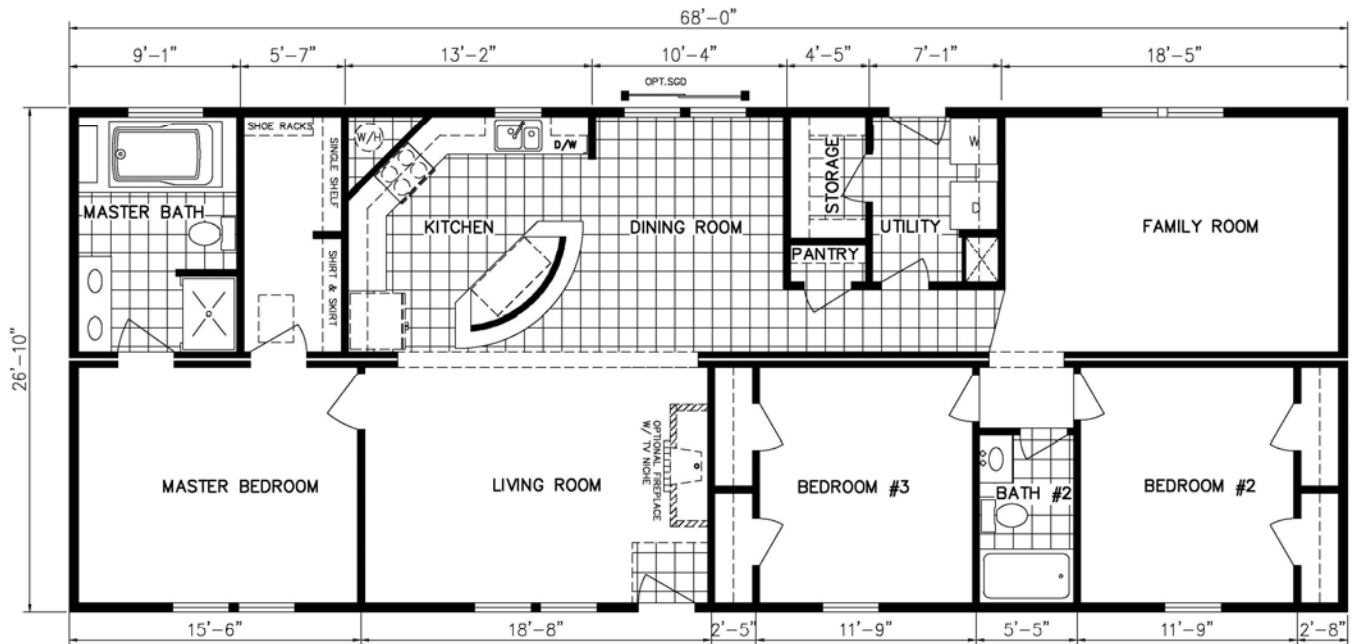
[www.holmesmodular.com](http://www.holmesmodular.com)



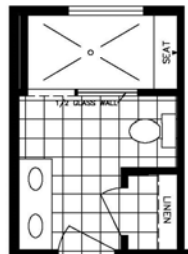
# Preferred Series by Holmes Building Systems



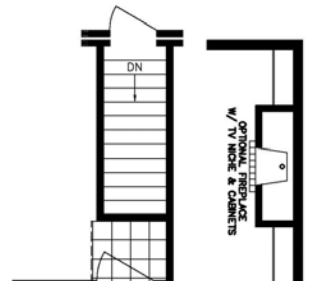
Elevation Shown with Optional and On-Site Builder Supplied Items. Consult Your Builder for Pricing.



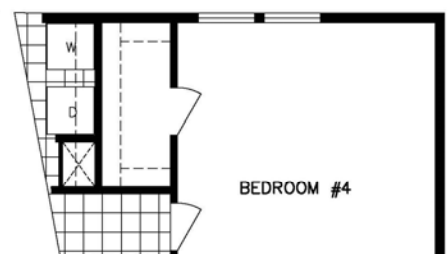
OPT #1 MASTER BATH



OPT#2 MASTER BATH



OPT. BASEMENT ENTRY FAMILY ROOM



BEDROOM #4



## Cypress Point

Model 6828A HBSP R

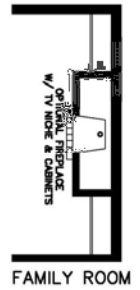
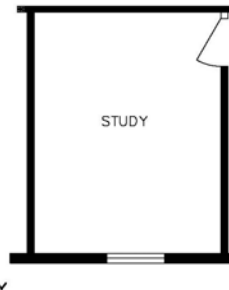
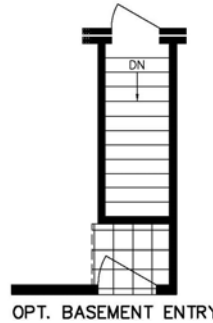
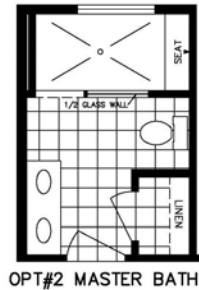
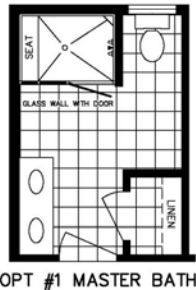
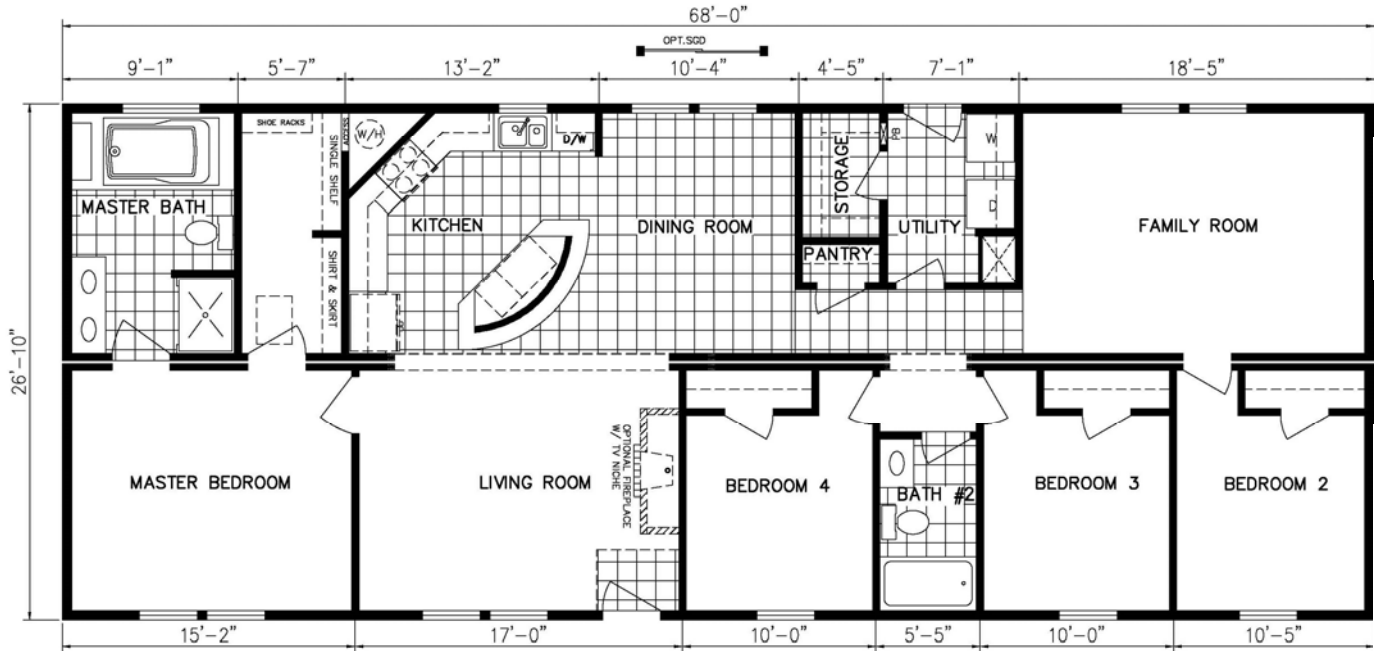
Approx. 1824 Sq.Ft.



# Preferred Series By Holmes Building Systems



Elevation Shown with Optional and On-Site Builder Supplied Items. Consult Your Builder for Pricing.



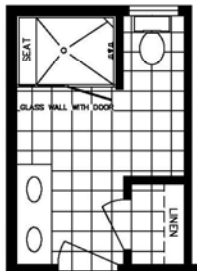
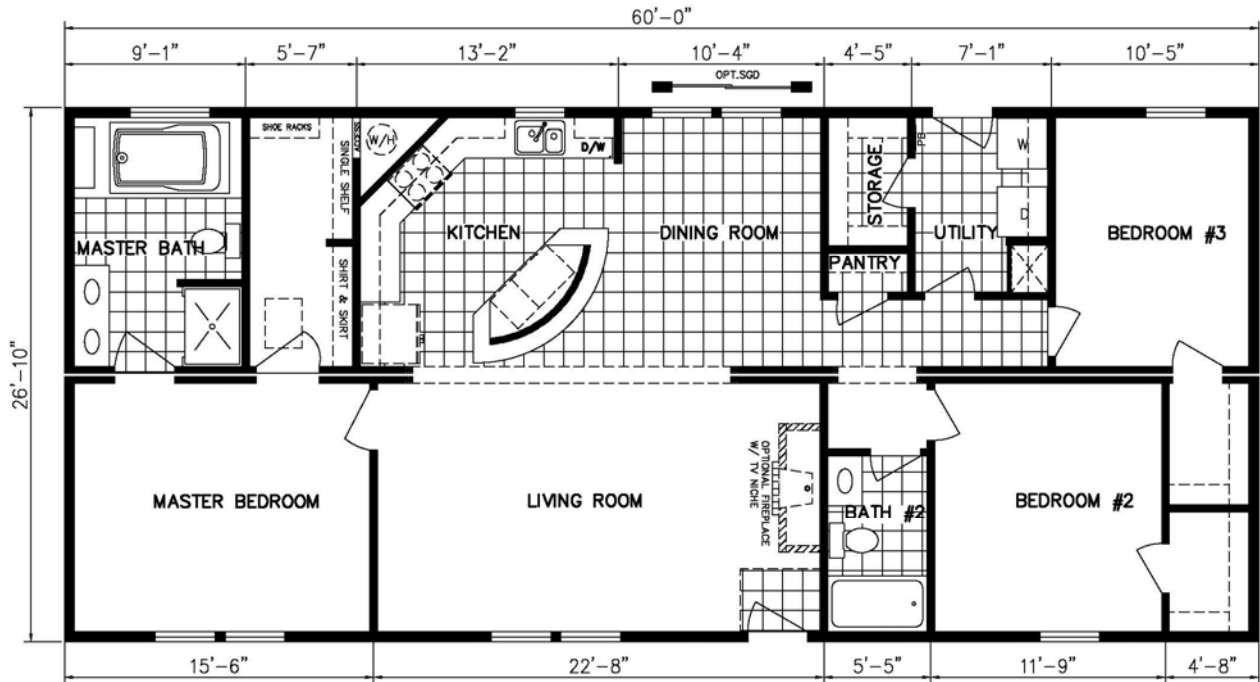
## Cypress Point Version 2

Model 6828C HBSP R

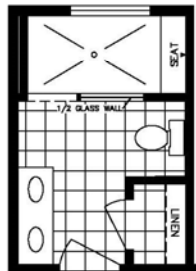
Approx. 1824 Sq.Ft.



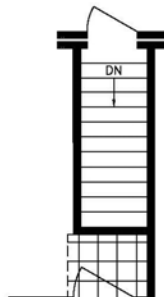
# Preferred Series by Holmes Building Systems



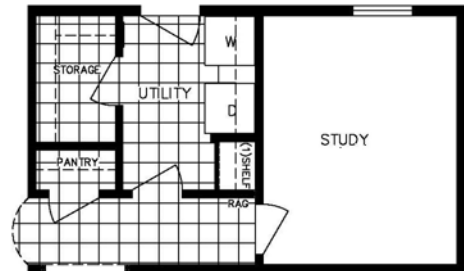
OPT #1 MASTER BATH



OPT#2 MASTER BATH



OPT. BASEMENT ENTRY



OPT. STUDY



Elevation Shown with Optional and On-Site Builder Supplied Items. Consult Your Builder for Pricing.



## Cypress Point Version 3

Model 6028J HBSP R

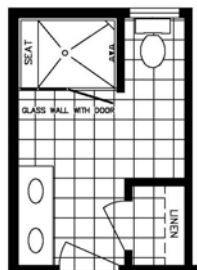
Approx. 1610 Sq.Ft.



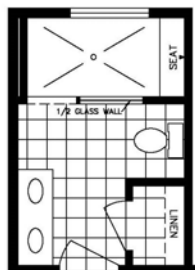
# Preferred Series by Holmes Building Systems



Elevation Shown with Optional and On-Site Builder Supplied Items. Consult Your Builder for Pricing.



OPT #1 MASTER BATH



OPT #2 MASTER BATH



## Torrey Pines

Model 5628A HBSP R

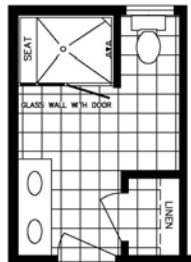
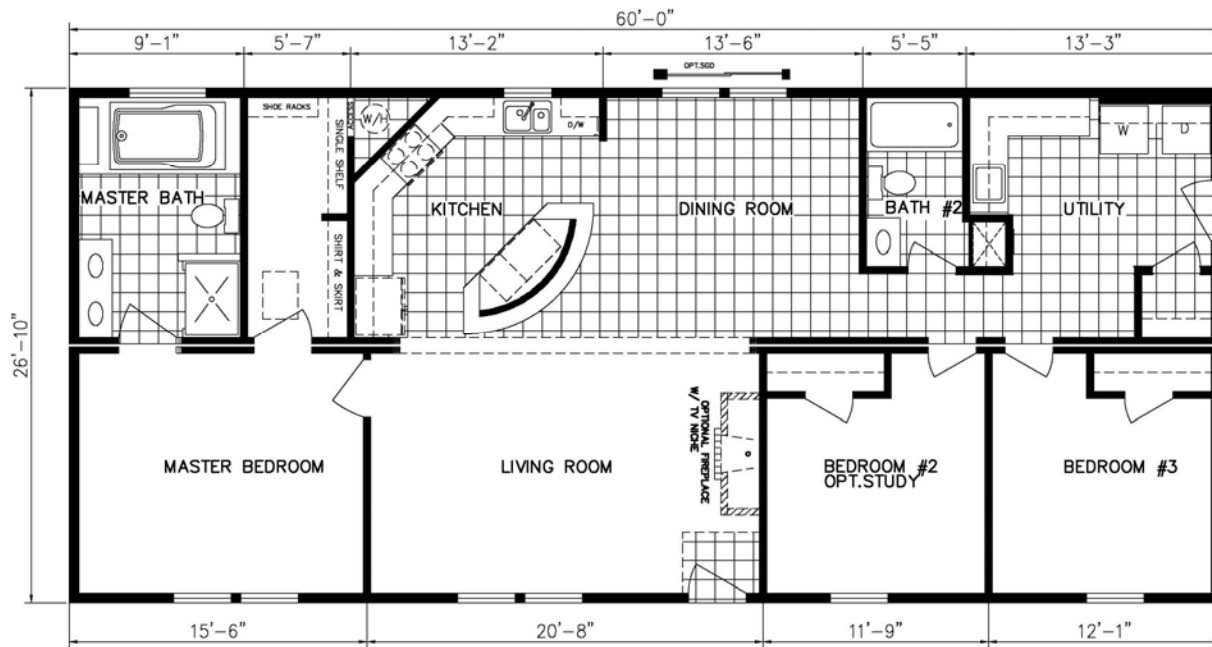
Approx. 1476 Sq.Ft. (Includes Porch)



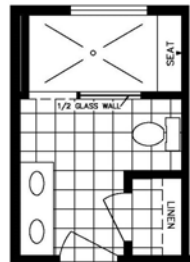
# Preferred Series by Holmes Building Systems



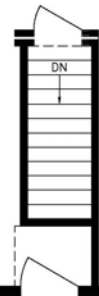
Elevation Shown with Optional and On-Site Builder Supplied Items. Consult Your Builder for Pricing.



OPT #1 MASTER BATH



OPT#2 MASTER BATH



OPTIONAL BASEMENT ENTRY



## Augusta

Model 6028L HBSP R

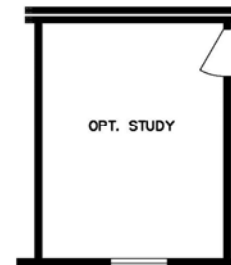
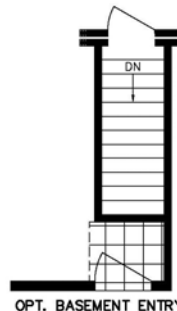
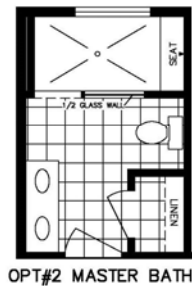
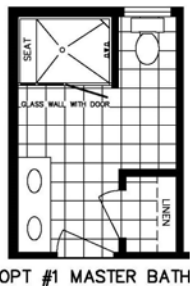
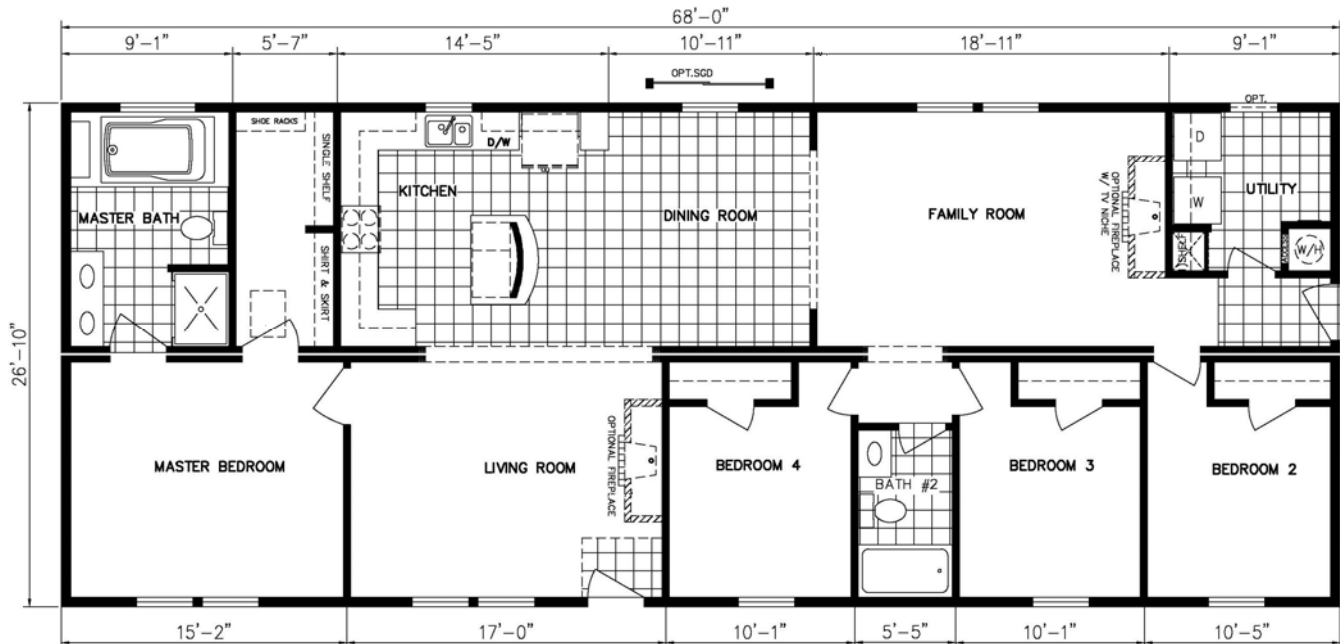
Approx. 1610 Sq.Ft.



# Preferred Series *By Holmes Building Systems*



Elevation Shown with Optional and On-Site Builder Supplied Items. Consult Your Builder for Pricing.



**Oakmont**  
 Model 6828B HBSP R  
 Approx. 1824 Sq.Ft.

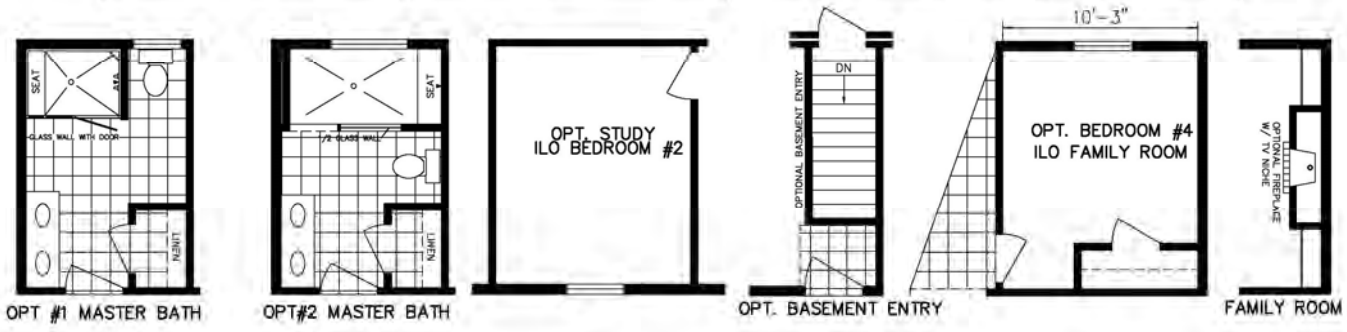




# Preferred Series by Holmes Building Systems



Elevation Shown with Optional and On-Site Builder Supplied Items. Consult Your Builder for Pricing.



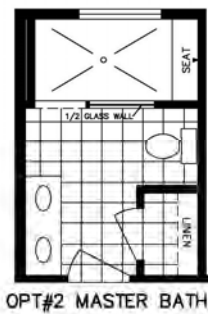
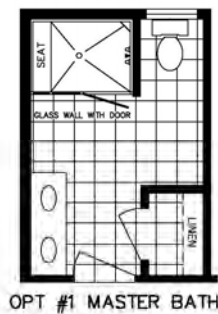
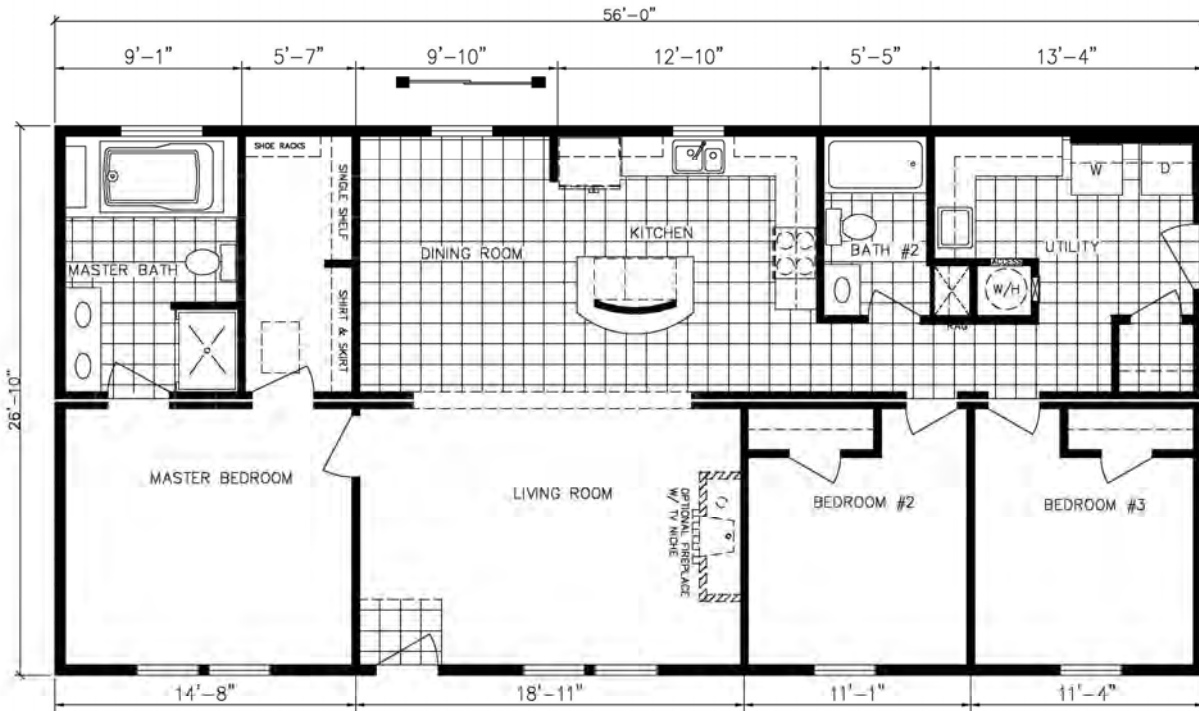
**Pebble Beach**  
 Model 6028H HBSP R  
 Approx. 1610 Sq.Ft.



# Preferred Series by Holmes Building Systems



Elevation Shown with Optional and On-Site Builder Supplied Items. Consult Your Builder for Pricing.

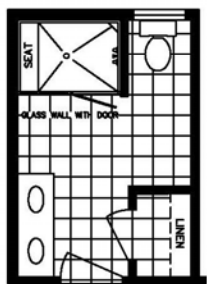
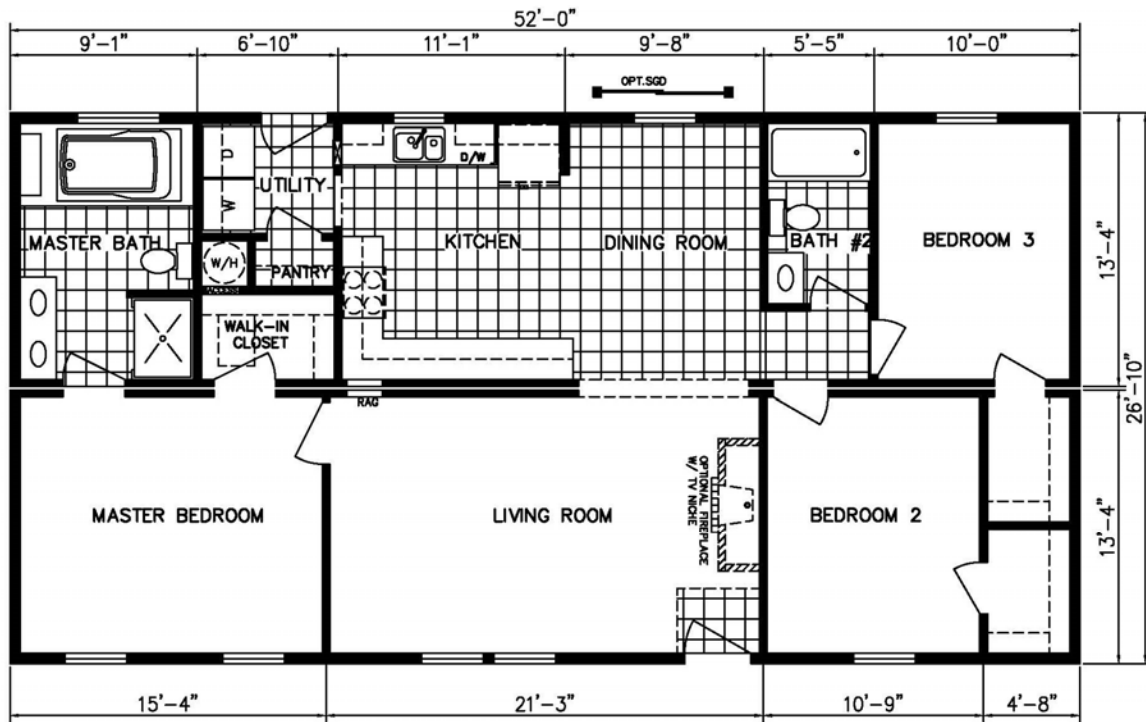


## Shadow Creek

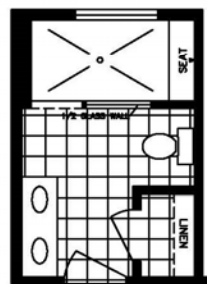
Model 5628C HBSP R

Approx. 1503 Sq.Ft.

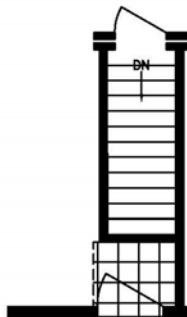
# Preferred Series *by Holmes Building Systems*



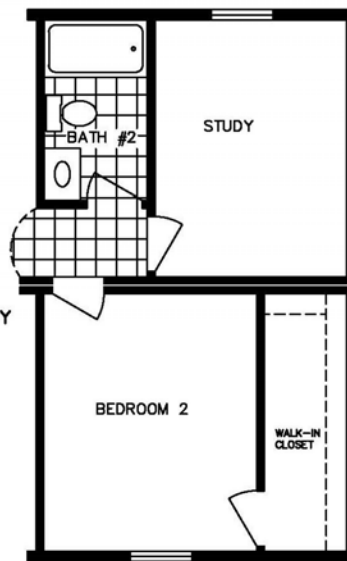
OPT #1 MASTER BATH



OPT #2 MASTER BATH



OPT. BASEMENT ENTRY



OPT. STUDY



Elevation Shown with Optional and On-Site Builder Supplied Items. Consult Your Builder for Pricing.

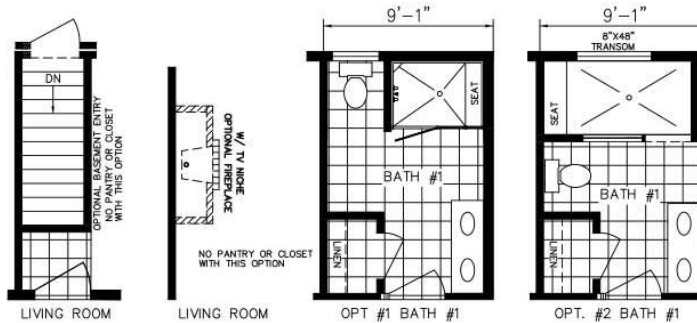
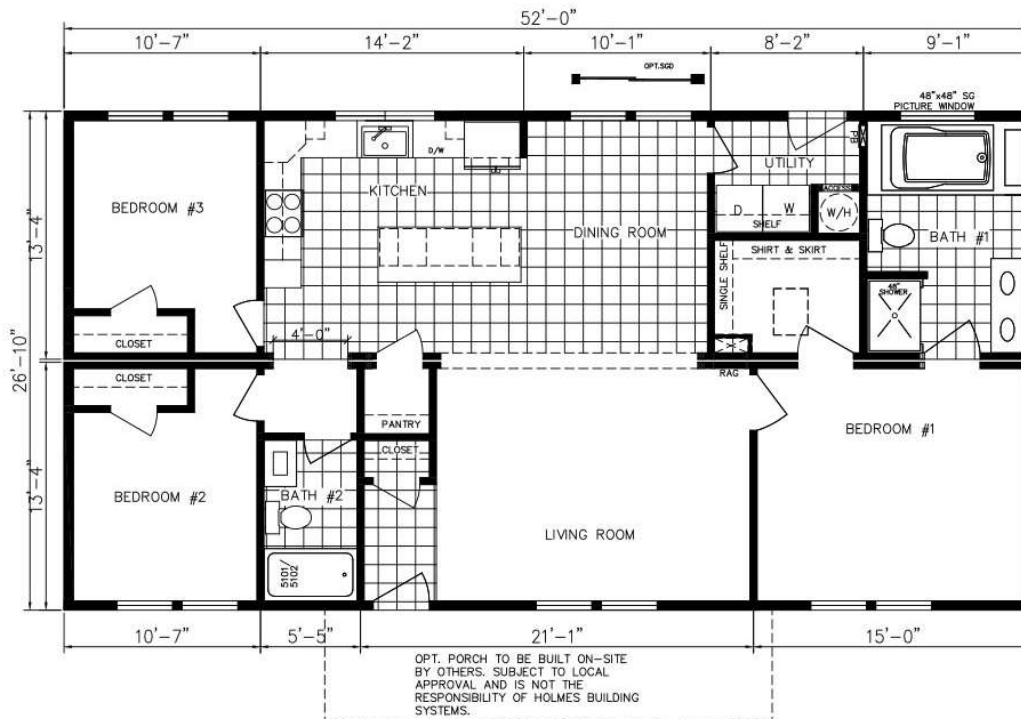


## Somerset Hills

Model 5228D HBSP R

Approx. 1395 Sq.Ft.

# Preferred Series *by Holmes Building Systems*



Elevation Shown with Optional and On-Site Builder Supplied Items. Consult Your Builder for Pricing.

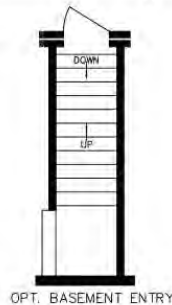
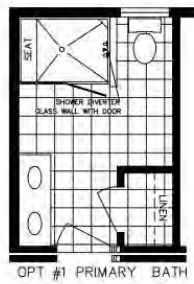
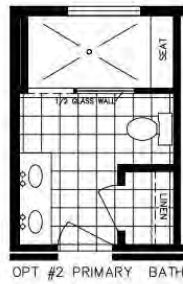
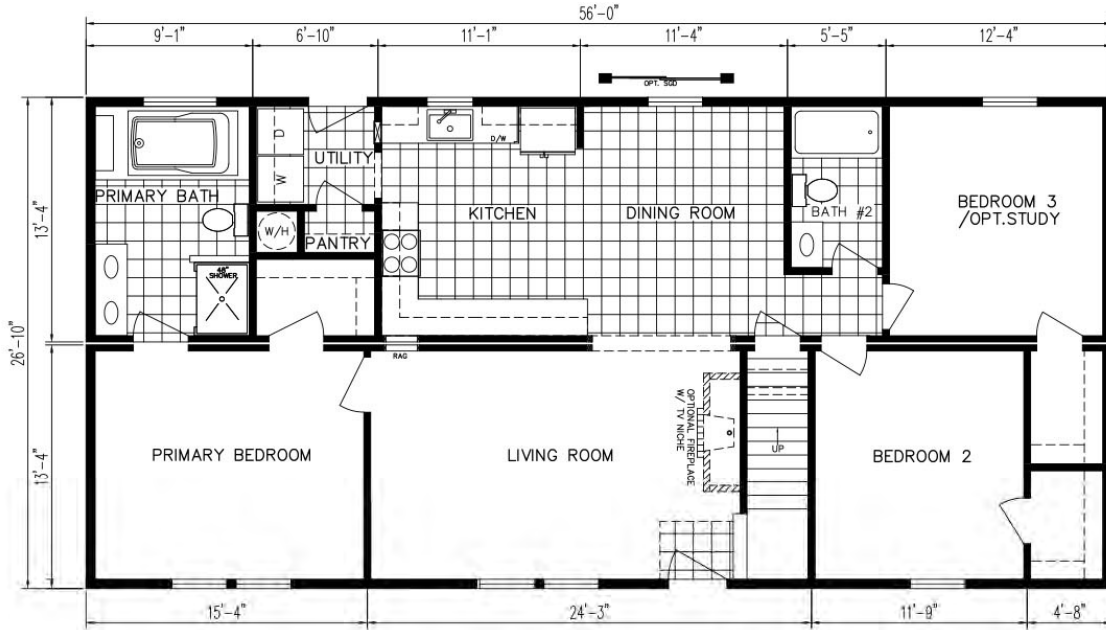


## Suncrest Ridge

Model 5228E HBSP R

Approx. 1395 Sq.Ft.

# Preferred Series by Holmes Building Systems



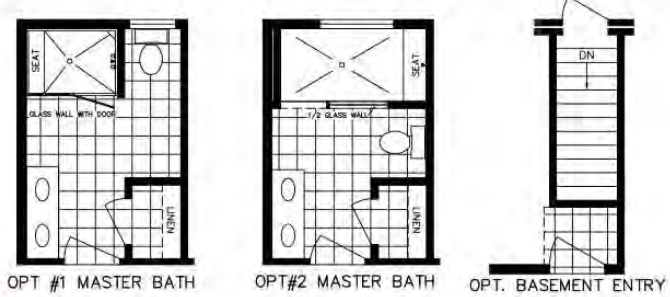
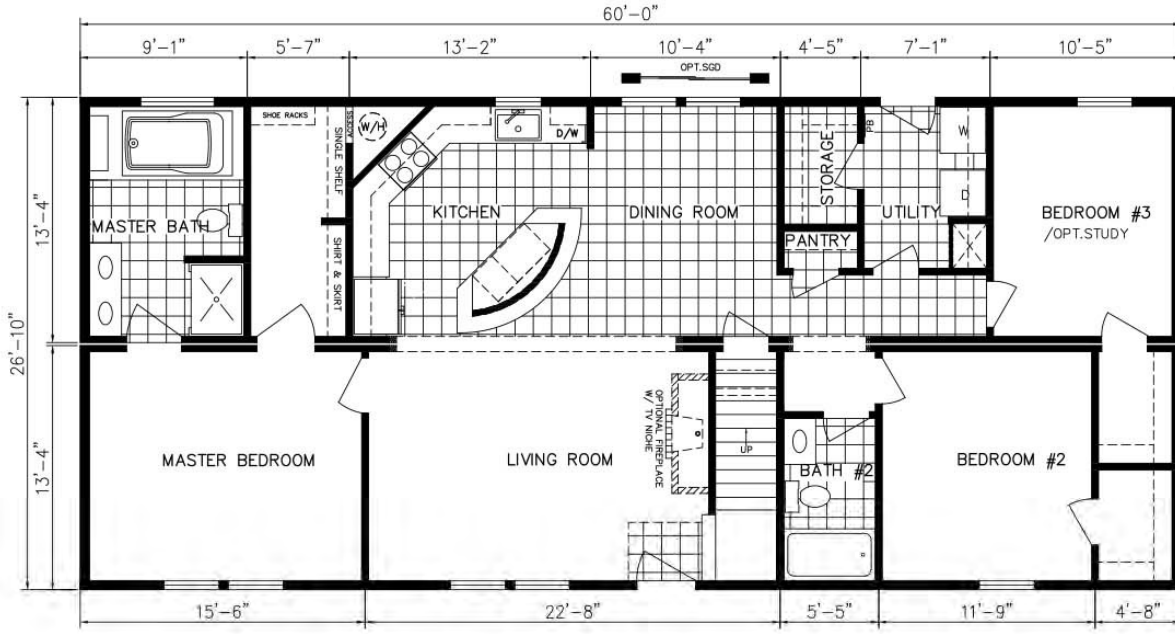
Elevation Shown with Optional and On-Site Builder Supplied Items. Consult Your Builder for Pricing.



## Diamond Creek

HBSP 5628D BR  
Approx. 1503 SqFt

# Preferred Series by Holmes Building Systems



Elevation Shown with Optional and On-Site Builder Supplied Items. Consult Your Builder for Pricing.



**Double Eagle**  
 Model 6028K HBSP R  
 Approx. 1610 Sq.Ft.

# Preferred Series by Holmes Building Systems

## Highlighted Interior Standards

Stainless Steel Kitchen Appliances



64/40 Stainless Steel Kitchen Sink



Raised Wall Cabinet Over Range



Laminate Kitchen Countertop with Ideal Edging and Full Ceramic Backsplash



Double Trash Can Base Cabinet & Pot and Pan Drawer Base Cabinet



Ideal Edge



Shoe Rack with Shirt & Skirt Shelves in Master Bedroom Closet



# Preferred Series by Holmes Building Systems

## Highlighted Interior Standards

Nickel T-Bar Cabinet Pulls

White Square Bowl Cultured Marble Bath Vanities



48" Fiberglass Shower per plan



Hall Bath 60"  
Fiberglass  
Tub/Shower

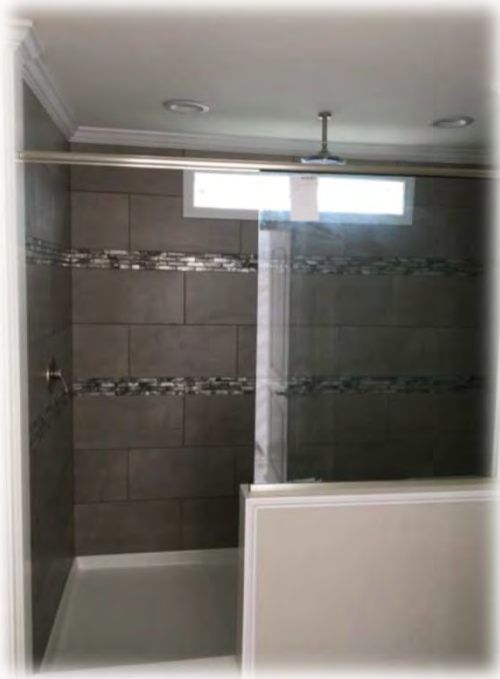




# Preferred Series by Holmes

## Popular Options Available per Plan

8' Ceramic Shower in Optional Master Bath w/ Two Shower Heads & Transom Window



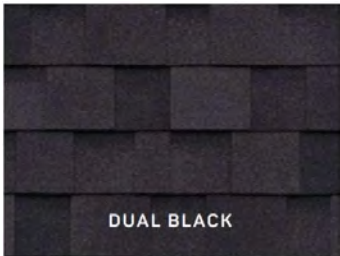
60" x 43" One Piece Fiberglass Tiled Shower Unit with Bench Seat and Glass Door



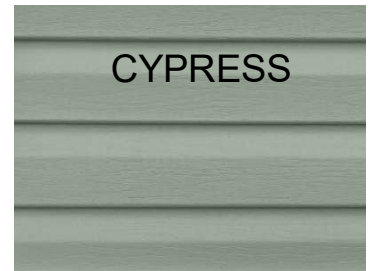
# Preferred Series Décor Choices



## Limited Lifetime Warranty Architectural Shingles



## Double 5 DL Vinyl Siding



## Vinyl Shutter Selections



Green



Brown



Blue



Black



Cranberry

*\* Some items shown and listed are optional. All items and options not available on all models. Please check with your salesman for availability and pricing.*

## Shaker Style Kitchen & Bath Cabinets

BLACK RAVEN



WHITE



GRAY



Door & Drawer  
Cabinet Hardware

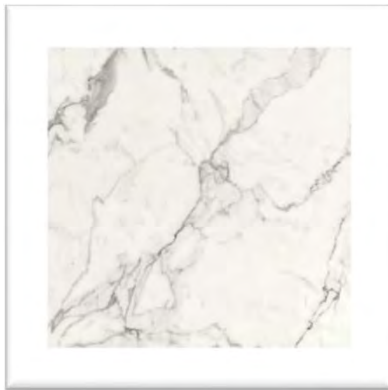


Laminate Ideal Edge



## Laminate Countertop with Ideal Edging

Calcutta Marble- 3460



Fantasy Marble- 9302



Antique Mascarello- 3466



## Kitchen Backsplash Glass Mosaic Ceramic

Triton (AG01)



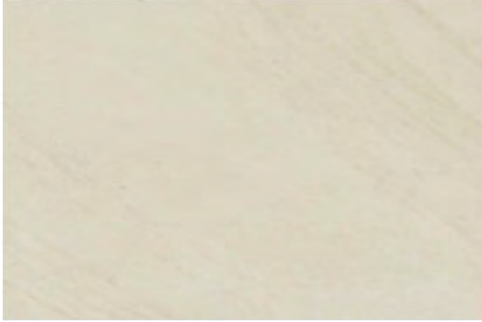
Galatea (AG03)



*\* Some items shown and listed are optional. All items and options not available on all models. Please check with your salesman for availability and pricing.*

**Ceramic Shower Tile**  
**12"x 24"**

White



Gray



---

**Congoleum Vinyl Flooring**



LX 275 Barn Wood  
Vintage White



LX 277 Barn Wood  
Greige

---

**Optional Vinyl Plank Flooring**



154 Almond Oak



5091 Lighthouse



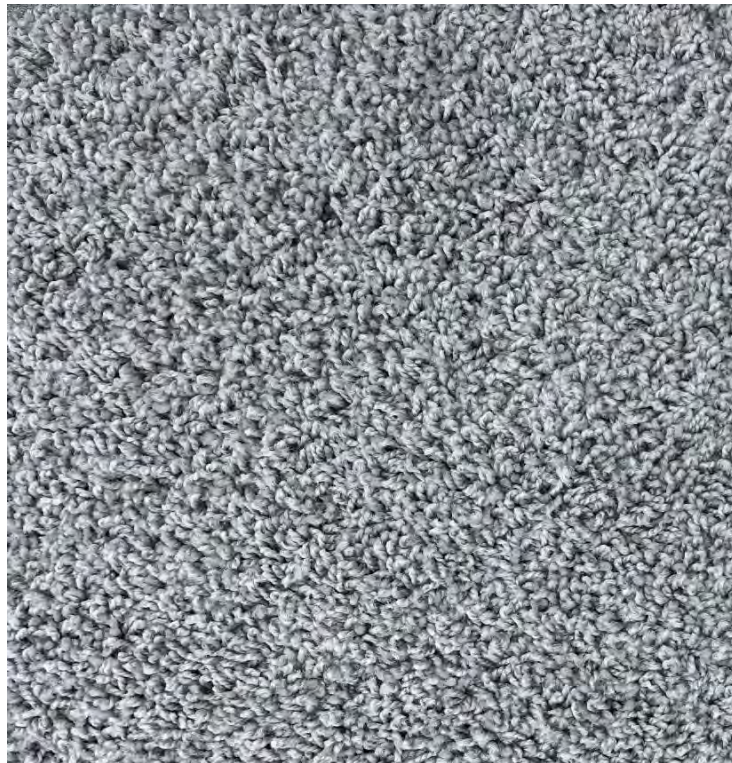
556 Smoky Oak

*\* Some items shown and listed are optional. All items and options not available on all models. Please check with your salesman for availability and pricing.*

**25 oz Carpet**



**TAN**



**GRAY**

*\* Some items shown and listed are optional. All items and options not available on all models. Please check with your salesman for availability and pricing.*

## Popular Options Available per Plan



Ventless Gas Fireplace w/ TV Niche & White Bookcase Cabinetry  
(Can also be ordered without cabinetry. Check with your salesman  
for location and availability)

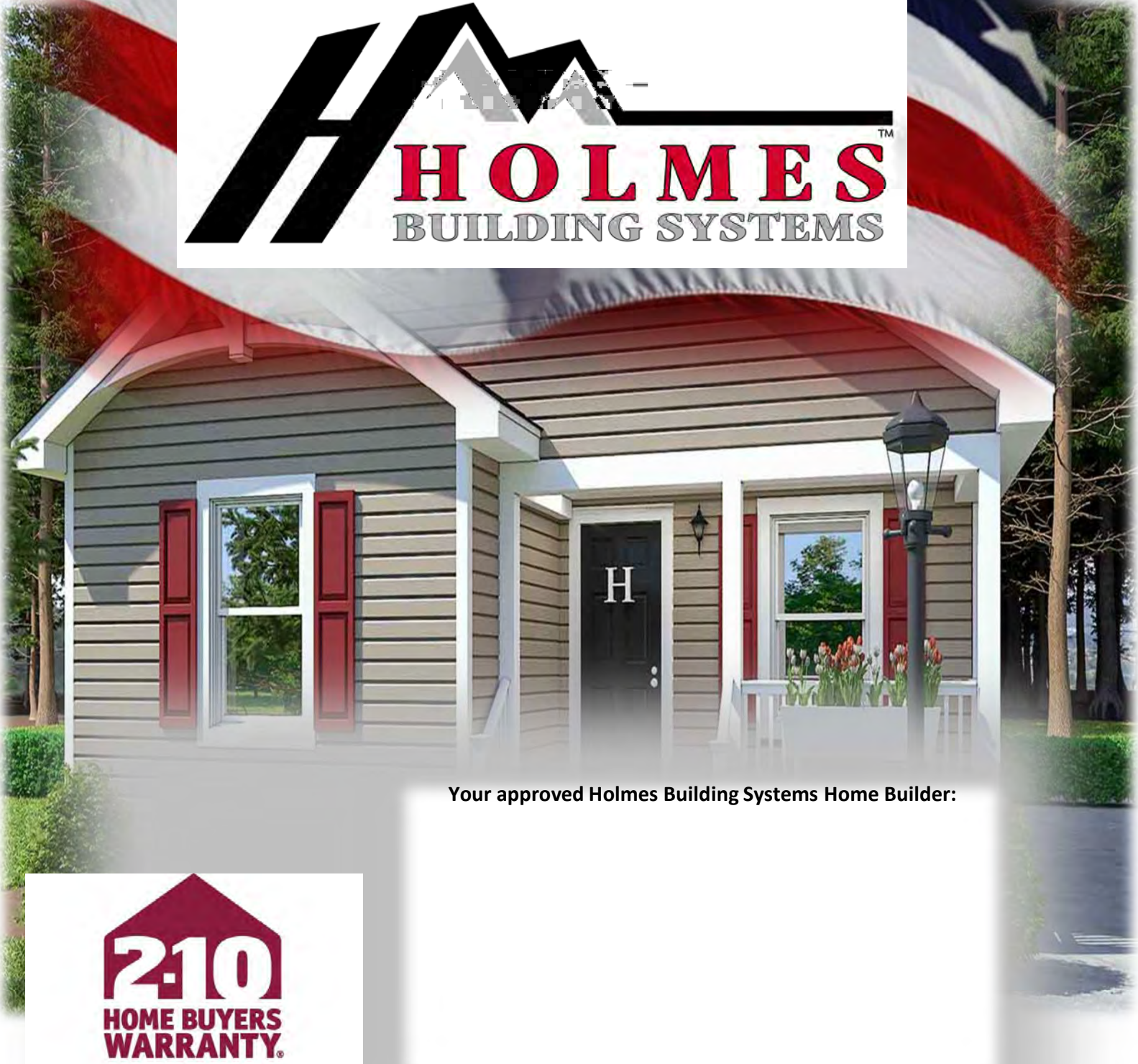
## Highlighted Exterior Features

Standard Window Gridless  
with 3 1/2" Lineals Front  
Door Elevation



Standard Window  
Gridless with Shutters  
Front Door Elevation





Your approved Holmes Building Systems Home Builder:



Holmes Building Systems, LLC. 2863 Old Plank Rd. Robbins, NC 27325

[www.Holmesmodular.com](http://www.Holmesmodular.com)

The floor plans & elevations are for illustration purposes only. Refer to working drawings for actual dimensions. © 2024 Holmes Building Systems, LLC