

# Premiere Special Series by Holmes Building Systems

P  
r  
e  
m  
i  
e  
r  
e  
  
S  
p  
e  
c  
i  
a  
l



PS



## “Premier Special *FARMHOUSE Series* Standard Building Specifications”

### Structural Features

- R 30 Batt Insulation in Ceilings
- R-19 Insulation in Walls
- Wind Zone 115 VULT
- OSB Floor Decking 23/32”
- (2 X 10) Floor Joist 16” OC
- (2 X 6) 9’ Sidewalls 16” OC
- (2 X 6) Top & Bottom Plates
- (2 X 4) 8’ Double Marriage Walls
- Engineered Roof Systems
- 7/12 Roof Pitch

### Plumbing

- Water Shut-Off Valves
- Pex Plumbing System
- 50 Gallon Water Heater
- Exterior Frost-Free Water Faucet  
(1 @ STD Location Per Plan)
- Whole House Water Shut-Off
- Washer Hook-Up
- Matte Black Single Handle Kitchen Spring Faucet w/ Pull Down Sprayer

### Baths

- 4x8’ Ceramic Shower, Bath 1 (Per Plan)
- 60” Fiberglass Tub/Shower, Hall Bath
- 48”x48” Window over Tub M/Bath (Per Plan)
- White Shaker Style Vanity Cabinets
- 36” High Lavatory(s) in M/Bath
- 36” High Lavatory in Bath 2
- Towel Bar/Tissue Holder All Baths
- Dual Lever Bath Faucets
- Cultured Marble Lavatories with Rectangular Bowls

### Available Options

- Free-Standing Pedestal Tub & 48” Shower
- Optional 4<sup>th</sup> Bedroom
- Sliding Glass Door in Dining Room
- 10/12 roof
- Farmhouse Style Interior Doors Available for Designated Locations
- Fireplace Feature Wall Available in Family Room
- Optional Basement Entry
- Whole House Board and Batten (Shipped Loose)
- 15” 2-panel Shutters (front door side only. Ask your Representative for details.)
- Optional Carpet in Bedrooms

### Exterior Features

- Royal Board and Batten Vinyl Siding ( Front Door Side Only)
- 7/16” OSB Wrap Exterior Walls
- 36” Craftsman-style Front Door (w/No Storm Door)
- 36” 6 Panel Rear Door w/No Storm (Per Plan)
- 12” Eave Overhangs (All Sides)
- Black Frame Gridless Insulated Windows
- House Wrap
- Limited Lifetime Architectural Shingles

### Kitchen

- S/S Dishwasher
- SpaceSaver Microwave
- 25cf Stainless Steel Refrigerator
- Glass Top 30” Stainless Range
- Stainless Steel Farmhouse Sink
- Laminate Countertop w/ Full Shiplap Backsplash & Ideal Edging over Sink
- 30” Overhead Cabinets w/Matching Cove Molding
- Gray Shaker Style Cabinets
- Kitchen Island White Shaker Style Cabinets with Beadboard
- Double Trash Can Base Cabinet in Island (Per Plan)
- Pot and Pan Drawer Base Cabinet in Island (Per Plan)
- Subway Tile Behind Range

### Interior Appointments

- 1/2” High Strength Sheetrock Ceilings w/Smooth Finish
- (2 X 4) Interior Wall Construction
- 36” Interior Doors M/Bedroom, MBR Closet & M/Bath
- Farmhouse Package: Lights, Plumbing, Door Hardware, and Bath Fixtures in Black
- Accent Ceiling Beams Designated Areas
- Shiplap Accent Walls in Designated Areas
- 3 1/2” Craftsman Crown Molding
- 6” Craftsman Baseboard Molding
- Craftsman Style Door And Window Trim
- Metal Shelf over Washer/Dryer
- Finished 1/2” Sheetrock Thru-out
- Lever Interior Door Hardware
- Shoe Rack with Shirt & Skirt Shelves in Master Bedroom Closet (Per Plan)
- Special TV Feature Wall in Family Room

### Electrical

- Surface Mount LED Can Light Ceiling Fixtures T/O
- Pendant Lights over Island (2)
- Feature Wall Lights in Dining Room
- 2 Black Farmhouse Exterior Lights @ Frt. Door
- Exterior Electrical Outlets (@ Exterior Doors)
- 200 AMP Panel Box
- Smoke Detector Systems
- Dryer Hook-up with recessed exhaust box
- 52” Ceiling Fan in Bedroom
- 60” Fan in Family Room
- 1 1/4” Conduit Running Down from Electrical Panel Box for Future Use

### Flooring

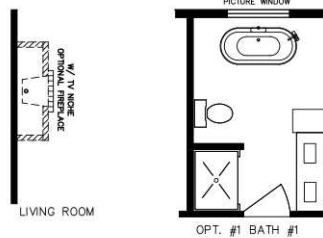
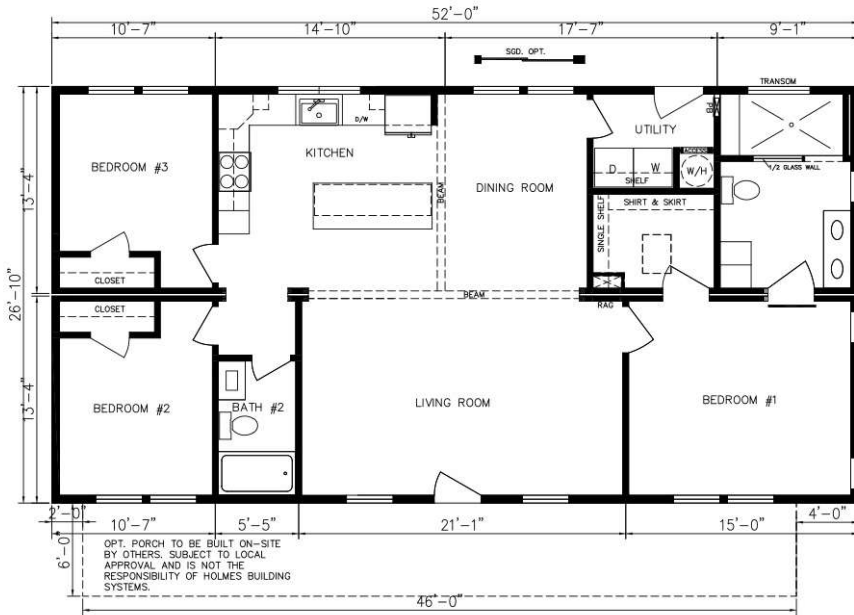
- Vinyl Plank Flooring Throughout (shipped loose for onsite install)



# Premiere Special Series by Holmes Building Systems



Elevation Shown with Optional and On-Site Builder Supplied Items. Consult Your Builder for Pricing.



## Country Farmhouse

Model 5228E HBSPS R

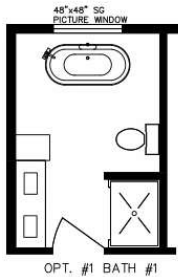
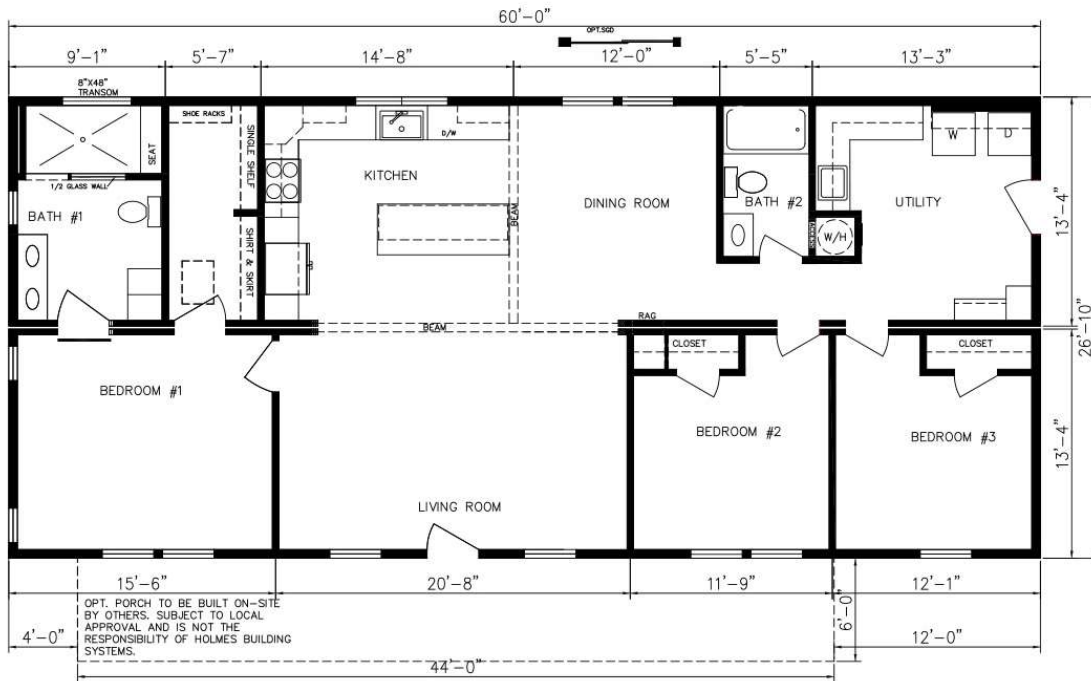
Approx. 1395 Sq.Ft.



# Premiere Special Series by Holmes Building Systems



Elevation Shown with Optional and On-Site Builder Supplied Items. Consult Your Builder for Pricing.



VINYL PLANK FLOORING T/O  
OPTION CARPET IN BEDROOMS



## Modern Farmhouse

6028M HBSPS R  
Approx. 1610 Sq.Ft.





# Premiere Special Series by Holmes Building Systems



Elevation Shown with Optional and On-Site Builder Supplied Items. Consult Your Builder for Pricing.



## *Southern Farmhouse*

Model 6828D HBSPS R  
Approx. 1824 Sq.Ft.



# Premiere Special Series by Holmes Building Systems

## Highlighted Interior Standards

Farmhouse Kitchen w/Stainless Steel Appliances



Dining Room Feature Wall



Ideal Edge



Luxurious Bath w/ 4x8 Ceramic Shower



Double Trash Can Base Cabinet & Pot and Pan Drawer Base Cabinet



Shiplap Accent Wall w/ Accent Windows and 60" fan



Shoe Rack with Shirt & Skirt Shelves in Master Bedroom Closet





# Premiere Special Series by Holmes Building Systems

## Highlighted Interior Standards

Black T-Bar Cabinet Pulls



Wooden Beams & Shiplap  
and Subway Tile Backsplash



Hall Bath 60"  
Fiberglass  
Tub/Shower



Premiere Special Exclusive Black  
Fixtures, Faucets and Mirrors



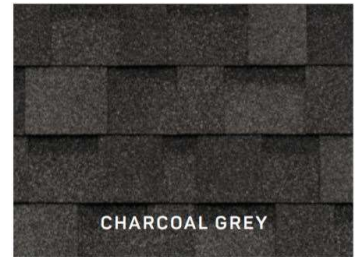
White Square Bowl Cultured Marble Bath Vanities



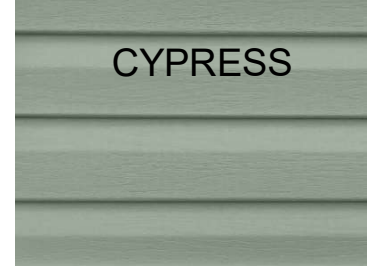
# Premiere Special Series Décor Choices



## Limited Lifetime Warranty Architectural Shingles



## Double 5 DL Vinyl Siding



## Vinyl Shutter Selections



**Green**



**Brown**



**Blue**



**Black**



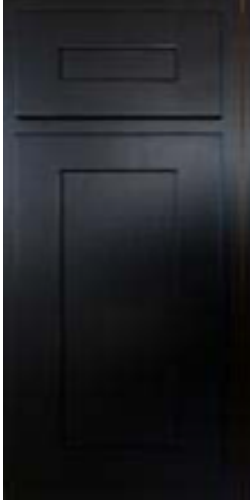
**Cranberry**

*\* Some items shown and listed are optional. All items and options not available on all models. Please check with your salesman for availability and pricing.*



## Shaker Style Kitchen & Bath Cabinets

BLACK RAVEN



WHITE



GRAY



Door & Drawer  
Cabinet Hardware



Laminate Ideal Edge



## Laminate Countertop with Ideal Edging

Calcutta Marble- 3460



Fantasy Marble- 9302



Antique Mascarello- 3466



## Kitchen Backsplash/Ceramic Shower Accent Glass Mosaic Ceramic



*\* Some items shown and listed are optional. All items and options not available on all models. Please check with your salesman for availability and pricing.*

**Ceramic Shower Tile**  
**12"x 24"**

White



Gray



**Optional Vinyl Plank Flooring**



154 Almond Oak



5091 Lighthouse



556 Smoky Oak

*\* Some items shown and listed are optional. All items and options not available on all models. Please check with your salesman for availability and pricing.*

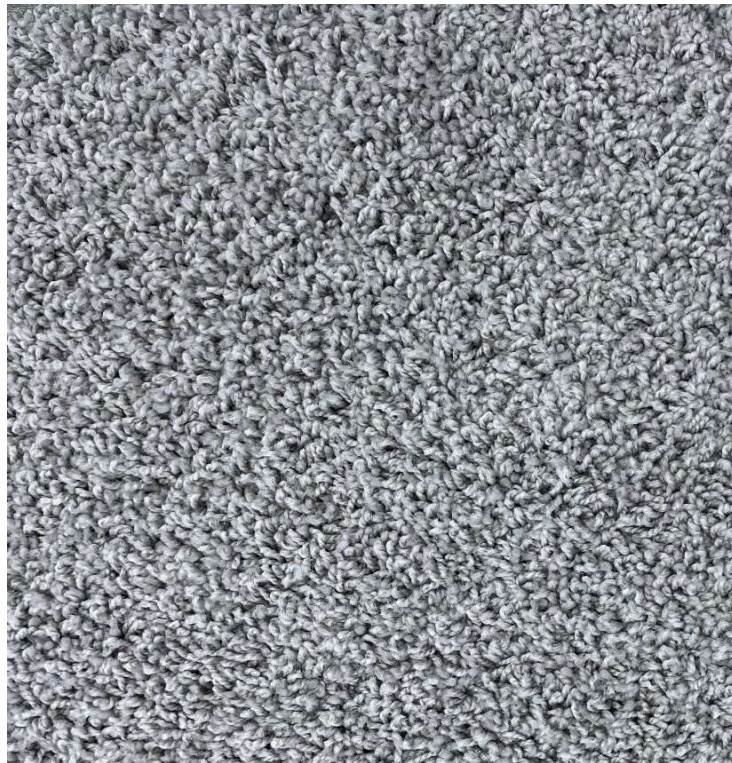




**25 oz Carpet**



**TAN**



**GRAY**

*\* Some items shown and listed are optional. All items and options not available on all models. Please check with your salesman for availability and pricing.*





Your approved Holmes Building Systems' Home Builder:



**P.S.**  
PREMIERE  
SPECIAL

Holmes Building Systems, LLC.  
2863 Old Plank Rd.  
Robbins, NC 28325  
910.948.2516  
[www.HOLMESMODULAR.com](http://www.HOLMESMODULAR.com)

**2-1-0**  
HOME BUYERS  
WARRANTY.