

GROWING TOGETHER

BUILDING IN FAITH



Saint Sharbel

MARONITE CATHOLIC CHURCH

Somerset, New Jersey

Campaign Prayer

ALMIGHTY AND GRACIOUS GOD, we your sons and daughters at Saint Sharbel Church have been so blessed to be part of this parish community. Help us to continue to be a Community in Christ for all generations as we move forward to renew our church home physically and spiritually. Open our hearts to respond to your Holy Spirit. Jesus, may we receive your most abundant blessings and grace. Asking the intercessions of the Blessed Virgin Mary, St. Maron and St. Sharbel, our patron, may the work of this campaign be pleasing to you, as we await, in joyful hope, for the fullness of your glory. Through Christ our Lord. Amen.



صلاة

أيها الرب الاله العظيم نحن أبناؤك وبناتك في رعية القديس شربل، نشكر بركتك الالهية لنا ولعائلنا، ونسألك ان ترمق بنظرك نحونا وتساعدنا في إكمال مشروع بناء بيتك والسير بنا نحو النجاح وارساء مشيئتك ومحبتك في قلوبنا. يا ربنا يسوع المسيح سدّد خطانا وأفضّ عَلَيْنَا نِعْمَكَ وَبَرَكَاتِكَ بشفاعه والدتك العذراء مريم ومار مارون ومار شربل شفيع رعبتنا، امين.

LETTER FROM THE BISHOP



EPARCHY OF SAINT MARON OF BROOKLYN
OFFICE OF THE BISHOP
109 Remsen Street
Brooklyn, New York 11201-4212
Tel: (718) 237-9913 Fax: (718) 243-0444
chancerystmaron@verizon.net www.stmaron.org

6 November 2019

Prot No. 510/1/19

Reverend Simon El Hajj
Saint Sharbel Church
7 Reeve Street
Somerset, NJ 08873

Dear Father Simon and Parishioners:

I am happy to add a word of encouragement to each one of you working so hard to make your dream a reality. The Capital Campaign you will begin is a way to ensure that the future is a bright one for Saint Sharbel Church.

I also appreciate, very much, what you are presently doing for your children, youth, young adults, and families. This ministry will assure that your parish will continue as a vibrant spiritual home for your people.

I have watched you take every step, and I pray that every future step will bring success. The greatest and best gift in life is to attempt to do God's will in our home, our family, our Church, and in our world.

May we do God's will, and may the prayers of Saint Sharbel and all the saints be with us.

Sincerely yours in Christ,

+ 

+ Gregory John Mansour

GJM/rs





LETTER FROM ABOUNA

Dear Brothers and Sisters in Christ,

THIS IS TRULY AN EXCITING TIME IN THE LIFE OF OUR PARISH!

We have much to be thankful for and have been blessed abundantly! With the guidance of the Holy Spirit, we have grown together, evolving into the giving and caring Community in Christ we are today.

These nearly two years of serving as your priest have been especially filled with the blessings and graces of a vibrant parish. Thank you for your generosity and support as I have embraced this role to serve and to lead. Your love for the Maronite faith and the parish is evident in the many selfless ways you share your time and talent to help our community flourish.

As we enter a new chapter in our parish history, we should take a moment to look back with gratitude on the sacrifices and commitments of those who came before us. God's grace and mercy have brought our parish where we are today. I am encouraged to know that we are ready to take up the challenge to continue this mission.

The church building that our parish has grown in for 38 years needs structural and architectural repairs. After several years of research and planning, we have come to the conclusion that building a new church with the amenities that fit the needs of our growing community, is the best solution. The new church will allow us to continue serving, praying, educating, and nourishing families in the love of Christ.

I am asking you to intentionally support our capital campaign that will benefit our Community in Christ. I am confident we will reach our campaign goals with the help of your generous commitment of time, talents and treasure as we live out our campaign slogan of, "Growing Together, Building in Faith."

Thank you for all you have done to make Saint Sharbel Church what it is today and thank you in advance for investing in our future.

Sincerely yours in Christ,

Reverend Simon El Hajj
Pastor, Saint Sharbel Maronite Catholic Church



كلمة كاهن الرعية

إخوتي واخواتي بالمسيح

إنني لفخور بوجودي معكم منذ حوالي السننتين، في رعية يرهاها الروح القدس ويقودها نحو الصلاح والتقدم ويسير بابنائها في طريق المحبة والوحدة وعمل الخير بنشاط لا مثيل له.

أعزائي لا يمكنني إلا أن أشكركم على جهودكم الجبارة وكرمكم الزائد، واحتضانكم لي ولرعييتكم، شكري لكم خصوصاً لكونكم لم تتركوا لي سوى مجال خدمتكم، والتضحية في سبيل تقدم الرعية وابنائها الاحباء.

شكري وصلواتي الى الذين سبقونا في خدمة الرعية، وابصالتها الى ما هي عليه من تقدم، ونجاح، وازدهار ولم يبقوا لنا إلا أن نكمل المسيرة والوصول بها إلى شاطئ الامان.

لقد مضى على مبنى الكنيسة ما يزيد على الثمانية والثلاثين سنة ما اوجب علينا الان الاعتناء، والاهتمام، والتخطيط لنقله إلى مكان يليق بنا وبشفيع كنيستنا. أنا على استعداد تام لوضع يدي بيدكم والقيام بالواجب. كل ذلك بمباركة القديس شربل، ومحبتنا لتراثنا الماروني المتجذر بالايمان.

أنني على يقين انكم ستبدلون كل جهد لانجاح هذا المشروع بمحبة مسيحية صادقة وايمان قوي.

شكري لكم مسبقاً من القلب، ويدي بيدكم "لنبنى معاً بايمان"

أخوكم بالمسيح

الأب سيمون الحاج





OUR VISION

THE VISION OF ST. SHARBEL CHURCH

is to be an active, growing, and welcoming community living the faith, values, and traditions of the Maronite Catholic Church.



Living Our Faith

OUR PARISH HAS GROWN IMMENSELY since its inception. Together, we have built a church community to be proud of! Participation in our Parish Organizations has doubled and continues to flourish. We are proud to live our faith through: Celebrating the Liturgies and Mysteries of the Maronite Church, Holy Eucharist Adoration, Retreats, Youth Bible Day, Praying the Rosary together, Processions and much more. By living our faith, we become bearers of the Good News in our homes, communities, and workplaces.



Parish Life

WE HAVE DOZENS OF COMMUNITY BUILDING EVENTS throughout the year to gather with old friends and meet new members of our parish family, including: Our Annual Festival, Elders Brunch, Helping Hands Community Event, Ladies Sodality Bake Sale, Feast of the Holy Cross Bonfire, Annual Soirée, Children's Christmas Party, Christmas Bonfire, Fish Fry Dinner, Talent Show, Spring Backgammon Tournament and much more. Each and every one of these events has been a success because of you!



Passing on Our Faith and Traditions

FROM KINDERGARTEN THROUGH HIGH SCHOOL, our Maronite Christian Formation programs and Arabic Classes continue to grow as new families join our parish each year. The younger children learn about their faith and Maronite Traditions, while the older youth help our teachers and are an active part of these programs. In learning our traditions, the children stay connected to Lebanon, cultivate their Maronite identity, and in time, they will recognize and understand their call to discipleship.

Our Past Points To Our Future

On July 13, 1980, Archbishop Zayek conducted the first Maronite mass at Sacred Heart Church in New Brunswick for about 35 Lebanese immigrant families. The Archbishop authorized the community to obtain a church of their own, establishing them as a new parish, the Saint Sharbel Mission of New Jersey.



In 2001, Bishop Hughes dedicated six acres of land to St. Sharbel Church. In the Center is a replica of Our Lady of Lebanon, a Marian shrine, donated by Mr. Salah Hayek and Family. It is surrounded by the symbols of Lebanon, the eternal cedar trees.

Dedication Ceremony



EXPANSION OF SAINT SHARBEL CHURCH CAMPUS

Throughout the parish's 40 years, the church campus has expanded to include several houses adjacent to the church property in preparation for the construction of a larger church.



➔ 1980

1984

1998

2001

2019



Beginning of Saint Sharbel Mission

In 1984, after two years of tremendous growth in parish families, the St. Sharbel Mission of New Jersey purchased a church in Somerset, NJ.

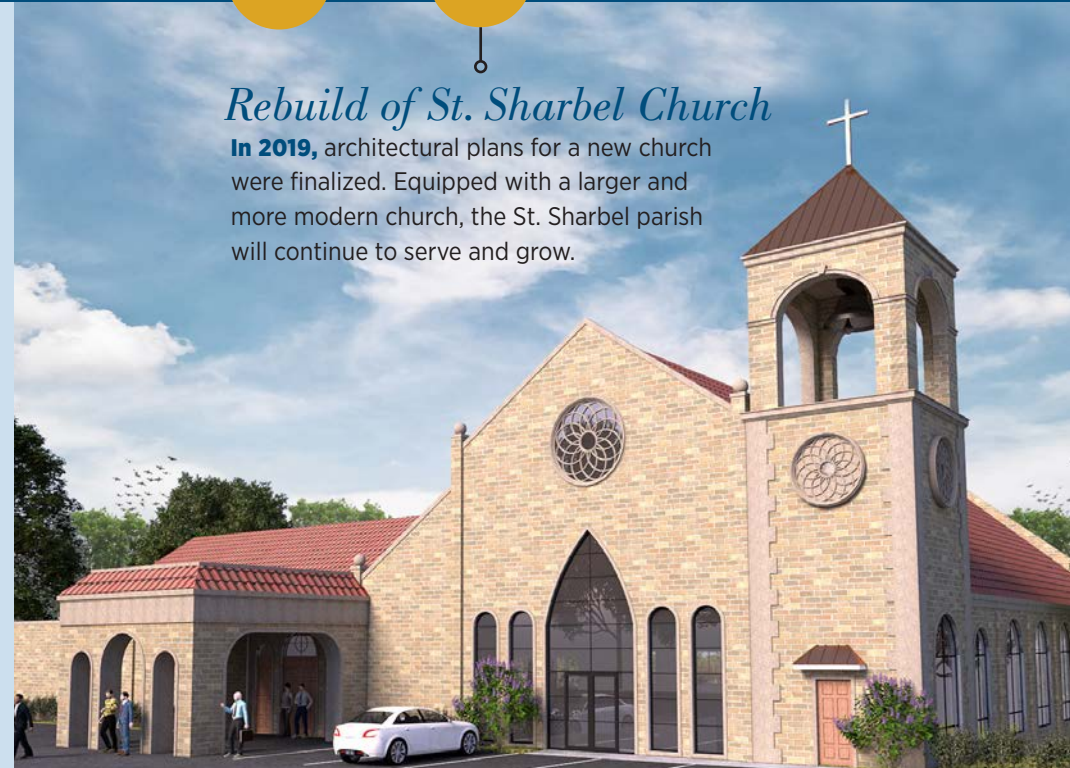


Paying off the Mortgage

In 1998, the parishioners collectively loaned the church enough money to pay off the mortgage.

Rebuild of St. Sharbel Church

In 2019, architectural plans for a new church were finalized. Equipped with a larger and more modern church, the St. Sharbel parish will continue to serve and grow.



Imagine...



YOUR CHILDREN AND YOUTH having a church that develops their faith, strengthening their characters to approach the changing world ...adults coming together for discipleship in an environment that fosters discussion, reflection and prayer...

...a church campus that serves everyone, unifying our parish to grow in faith and love ...knowing that St. Sharbel Church is a Community in Christ, embracing a future that is inspiring and life-giving.



OUR NEED




AFTER ITS PURCHASE IN 1984, the Saint Sharbel Church building has served our needs for nearly four decades. The structural integrity of the church is now inadequate and so after years of research and planning, the decision has been made to build a new church that fits the needs of our growing community.

Construction of the new church campus is estimated to cost \$2.8 million. The church will contribute \$1 million of its funds and raise the remaining \$1.8 million with your help. Groundbreaking for the new building is anticipated in the summer of 2021. The new church will contain both a main and lower level, offering welcoming and aesthetic features on a larger footprint.

The church is a 5,000 square foot structure located on a 14,000 square foot campus. This new facility will help our community thrive to its fullest potential. It will also provide a healthy and safe environment for all who are active in the parish life at St. Sharbel Church.

Some of the much needed amenities will include:

- Double the Number of Seating for Parishioners
- Parking for 100+ Vehicles on our Campus
- Restrooms on Both the Main and Lower Levels
- Commercial Kitchen
- 4000 Sq. Ft. Hall (also available to parishioners for sacramental use such as baptisms, weddings & repasts)
- Bridal Room and Family/Cry Room
- Spacious and Technology Equipped Classrooms for Maronite Christian Formation
- New Sacristies
- Confessional Room
- Handicap Accessibility / Elevator
- Conference / Meeting Rooms
- Community Center for Youths and Seniors
- Bell Tower
- Middle Eastern Language Learning Center (LLC)



 RAISE 1.8 MILLION

 GROUND BREAKING!

 2021



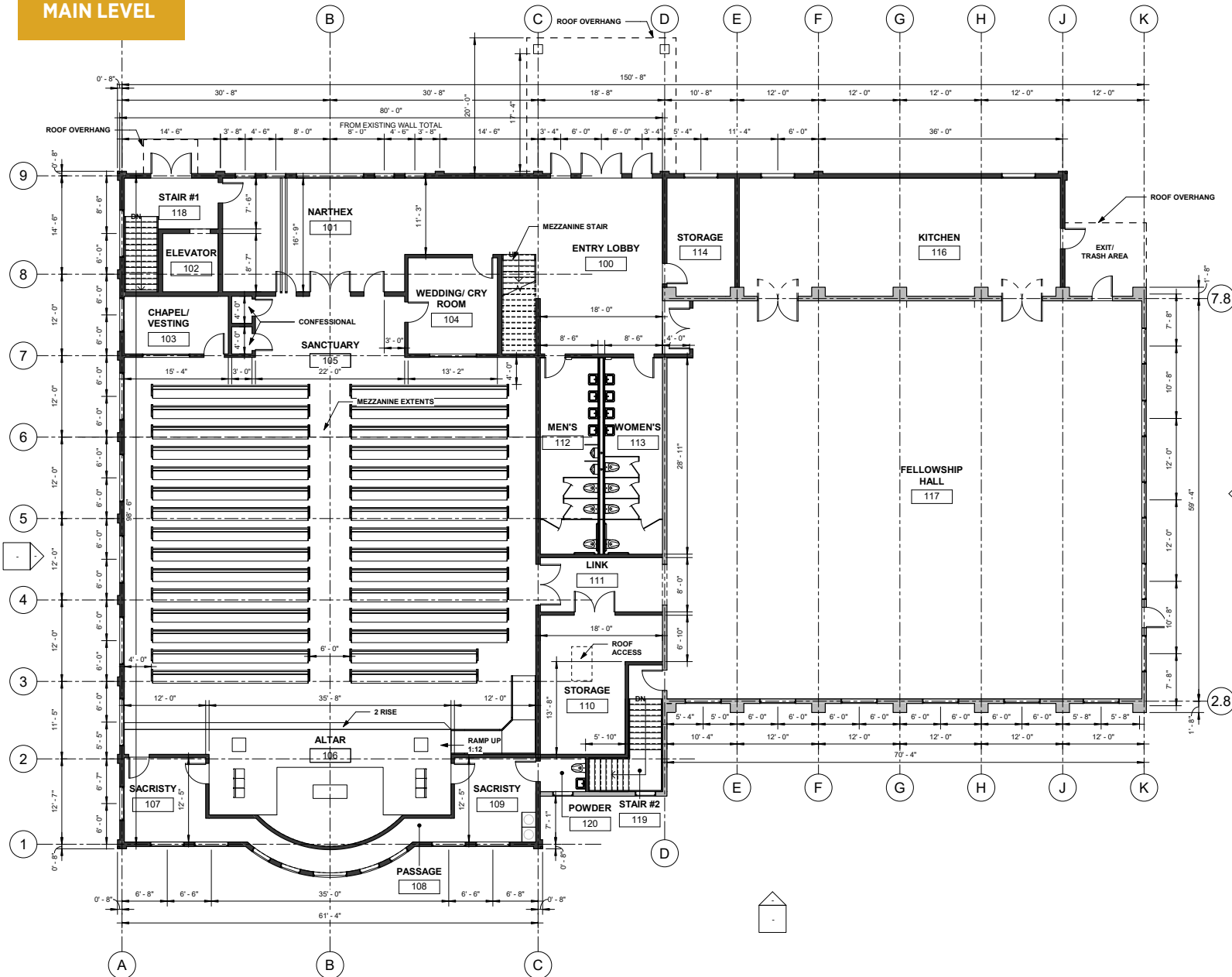
NEW CHURCH PLANS

“Christ is the foundation of the Lord’s building, you are its living stones and the Holy Spirit is the Cornerstone.”

—St. Sharbel Makhlouf



MAIN LEVEL



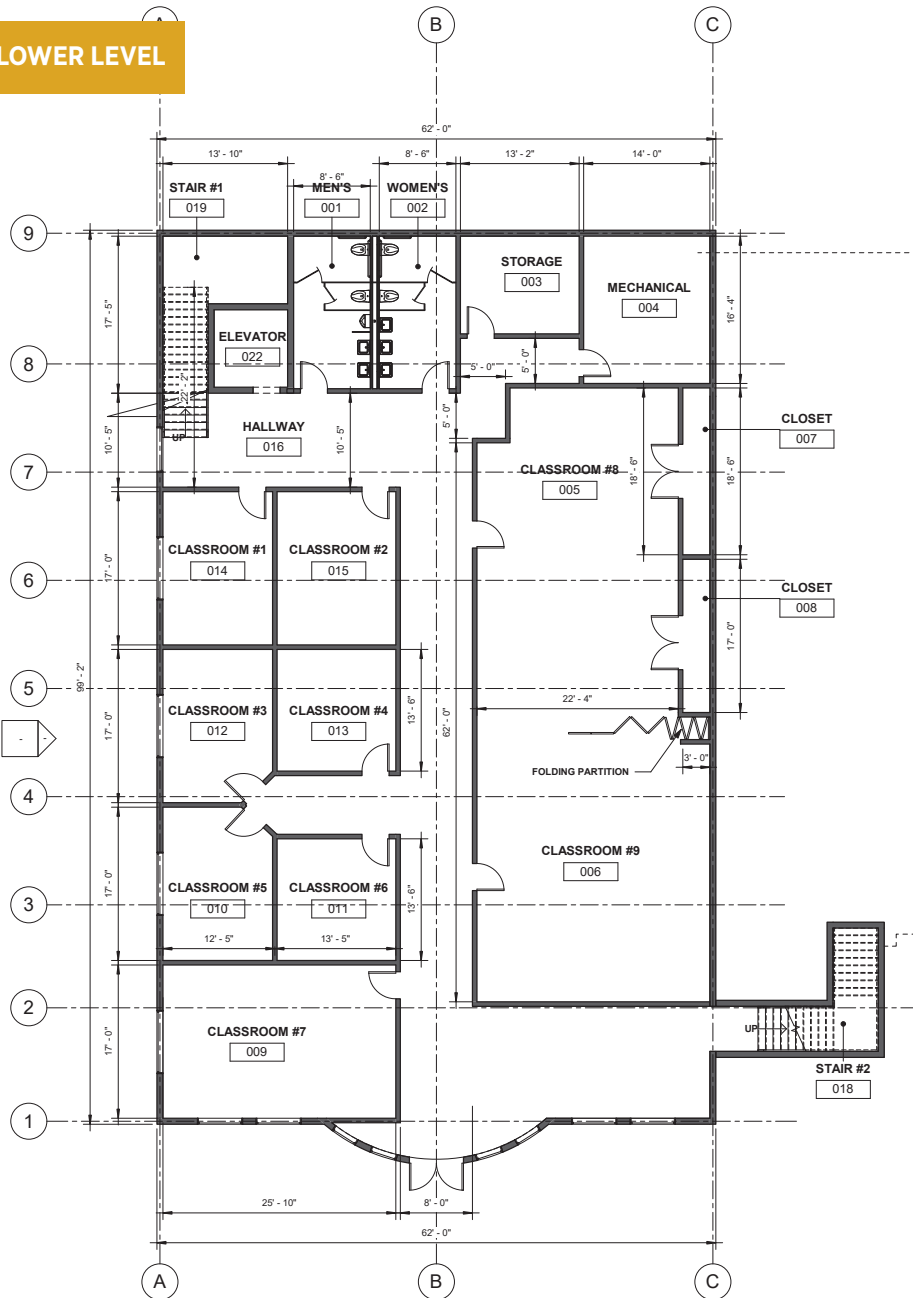
ROOM NAME	RM #	RM AREA
ENTRY LOBBY	100	501 SF
NARTHEX	101	587 SF
ELEVATOR	102	70 SF
CHAPEL/ VESTING	103	130 SF
WEDDING/ CRY ROOM	104	187 SF
SANCTUARY	105	3584 SF
ALTAR	106	550 SF
SACRISTY	107	149 SF
PASSAGE	108	134 SF
SACRISTY	109	149 SF
STORAGE	110	294 SF
LINK	111	144 SF
MEN'S	112	247 SF
WOMEN'S	113	247 SF
STORAGE	114	172 SF
KITCHEN	116	815 SF
FELLOWSHIP HALL	117	4075 SF
STAIR #1	118	150 SF
STAIR #2	119	103 SF
POWDER	120	33 SF



Saint Sharbel

MARONITE CATHOLIC CHURCH

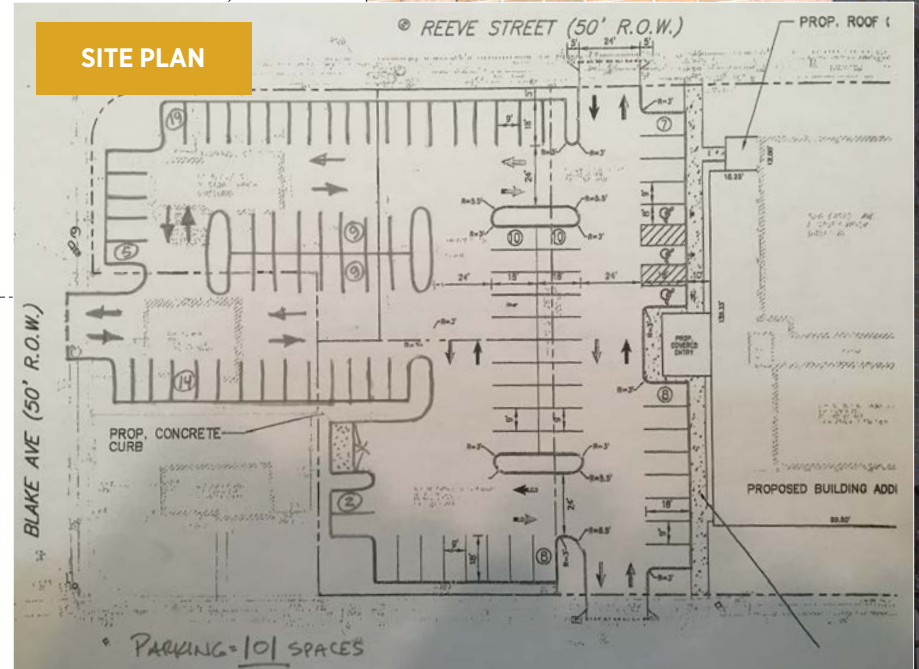
LOWER LEVEL



ROOM NAME	RM #	RM AREA
MEN'S	001	144 SF
WOMEN'S	002	144 SF
STORAGE	003	143 SF
MECHANICAL	004	229 SF
CLASSROOM #8	005	827 SF
CLASSROOM #9	006	780 SF
CLOSET	007	56 SF
CLOSET	008	51 SF
CLASSROOM #7	009	439 SF
CLASSROOM #5	010	201 SF
CLASSROOM #6	011	178 SF
CLASSROOM #3	012	201 SF
CLASSROOM #4	013	178 SF
CLASSROOM #1	014	207 SF
CLASSROOM #2	015	224 SF
HALLWAY	016	1532 SF
STAIR #2	018	110 SF
STAIR #1	019	155 SF
ELEVATOR	022	70 SF



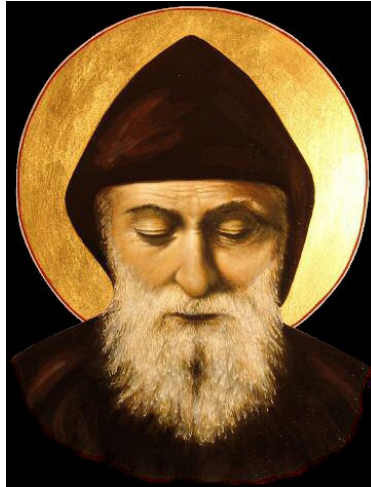
SITE PLAN



HOW WE GET THERE

DURING THIS CAMPAIGN,
WE ARE ASKING EVERYONE
WHO CALLS ST. SHARBEL
THEIR HOME TO:

- 1 **PRAY** for the success of the Campaign.
- 2 **PARTICIPATE** and share this information with as many people as you can.
- 3 **PLEDGE** to the best of your ability.



GIVING CONSIDERATIONS

Weekly (\$)	Monthly (\$)	Quarterly (\$)	Yearly (\$)
75	324	972	3,888
57	248	744	2,976
29	124	372	1,488
17	72	216	864
9	38	114	456

GROWING
TOGETHER



- Payments may be made over a period of three years.
- Pledge payments are fully deductible for tax purposes.
- Please make checks payable to: **St. Sharbel Church**

If you have any questions
about the campaign or making
your pledge, please contact
Father Simon at 732-828-2055

WAYS TO GIVE

WE NEED YOUR HELP. If we are going to succeed in continuing to support our parish family and provide the next generation and beyond with a unified and sustainable home, we need a sacrificial gift from everyone who is a part of this community.

Selecting the best gift plan depends on your personal financial situation. As tax laws are always changing and each individual's situation is unique, donors are encouraged to consult with financial or tax advisors to determine the most beneficial contribution method. Pledge payments are tax deductible.

Pledges

Pledges are commitments made in good faith, but not legally binding. You may want to consider stretching your pledge over three years to maximize the total amount of your support. This commitment can be fulfilled through monthly, quarterly, semi-annual or annual installments.

Cash, Securities & Online Giving

Gifts of cash by check or gifts of appreciated securities are the most common and allow the campaign to address immediate needs. Securities include stocks, bonds and mutual funds and can often be a tax-advantaged form of giving. Gifts of cash can also be made by giving online through bank direct withdrawal, credit card or debit card. To make your gift online, please visit www.saintsharbelnj.org.

Planned Gifts & Bequests

Planned giving is the process of carefully selecting the best method and assets for making a charitable gift. Such a gift can enable you to take full advantage of the tax laws to accomplish your financial and charitable goals.

Corporate Matching Gifts

A matching gift program provided through your employer may allow you to increase the value of your gift. Many companies match charitable gifts of employees, retirees or board members.



Commemorative Naming

TO HONOR YOUR GENEROUS SUPPORT, an artwork of the Cedars of Lebanon will be commissioned to the church, displaying the names of those who have pledged.



“God knows our whole being. Those who ask for his grace with confidence will not be disappointed. Ask Him to fulfill your needs.”

—St. Sharbel Makhoulouf

FREQUENTLY ASKED QUESTIONS

WHY DON'T WE BUILD SOMEWHERE ELSE?

After thorough search and review spanning many years, we have found that rebuilding the church on its existing property is the least risky and most financially prudent option. This review considered twenty-seven different properties that either did not fit our needs or were too costly.

CAN WE EXPAND THE CHURCH INSTEAD OF BUILDING A NEW ONE?

According to the architect, the structural integrity of the church is not in a condition to support an expansion. Demolishing and rebuilding is the most feasible option and offers us more flexibility in the new design.

WHY ARE WE EMBARKING ON THIS NOW?

The parish community has been working towards this goal for many years. We believe the parish is now in a position to build the church campus for our future.

WHEN WILL BUILDING START? HOW WILL THIS AFFECT OUR PARISH LIFE?

With the success of the capital campaign, construction will begin in 2021. The construction is expected to take 14 months. Every effort will be made to continue parish services.

IS THERE STILL TIME TO MAKE SUGGESTIONS?

Father Simon welcomes all suggestions during the planning phase.

WHY SHOULD I CONSIDER CONTRIBUTING TO THE CAMPAIGN?

Our community is the foundation of the church. As a member of this community, please consider investing in a church campus that serves you and your family's future needs.

WHY DO WE NEED A CAPITAL CAMPAIGN?

A capital campaign is a commonly used and efficient tool to manage the fundraising of a new church. It enables the church to separate the financial contributions made specifically for building the new church campus.

ISN'T OUR CHURCH FINE THE WAY IT IS?

We are building a new church because the structural integrity of the church building is inadequate. A centralized campus will also better serve our parish by providing more opportunities for engagement and an overall larger and enjoyable facility.

IF I AM UNABLE TO MAKE A LARGE DONATION, WILL MY CONTRIBUTION STILL HELP?

Every contribution, regardless of size, makes an impact. More importantly, we welcome every contribution, knowing that it was given from a place of generosity and love.

IS MY PLEDGE IN ADDITION TO MY WEEKLY ENVELOPE CONTRIBUTION?

Yes, your pledge is separate from your weekly contribution. Your weekly contribution funds the operation and programs of the existing church.



**“GROWING TOGETHER,
BUILDING IN FAITH,”**
today and for
generations to come.

*“Start by doing what is necessary;
then do what’s possible; and suddenly
you are doing the impossible.”*

—St. Francis of Assisi





Saint Sharbel

MARONITE CATHOLIC CHURCH


7 Reeve Street, Somerset, NJ 08873


732-828-2055

STAY UP-TO-DATE with our **Capital Campaign**

VISIT US AT: saintsharbelnj.org

FOLLOW US ON:

 [facebook.com/thenewstsharbelchurch](https://www.facebook.com/thenewstsharbelchurch)

 [@thenewstsharbelchurch](https://www.instagram.com/thenewstsharbelchurch)

**GROWING
TOGETHER**

