

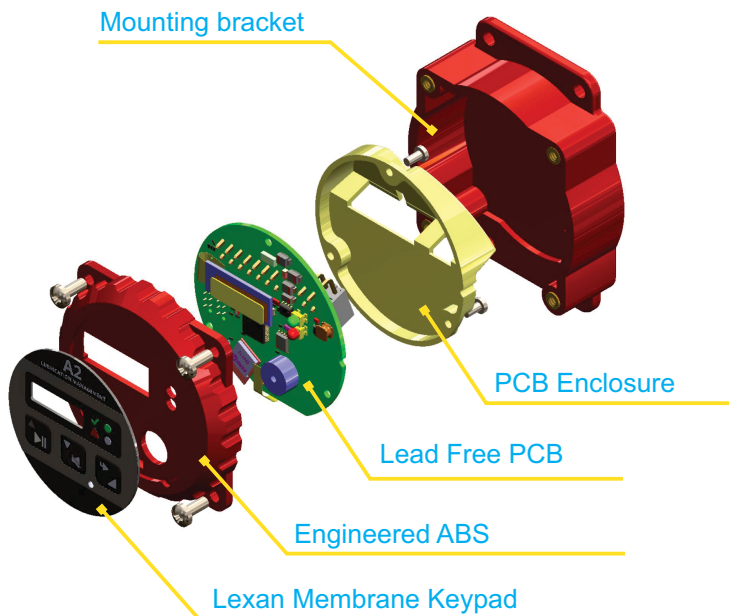
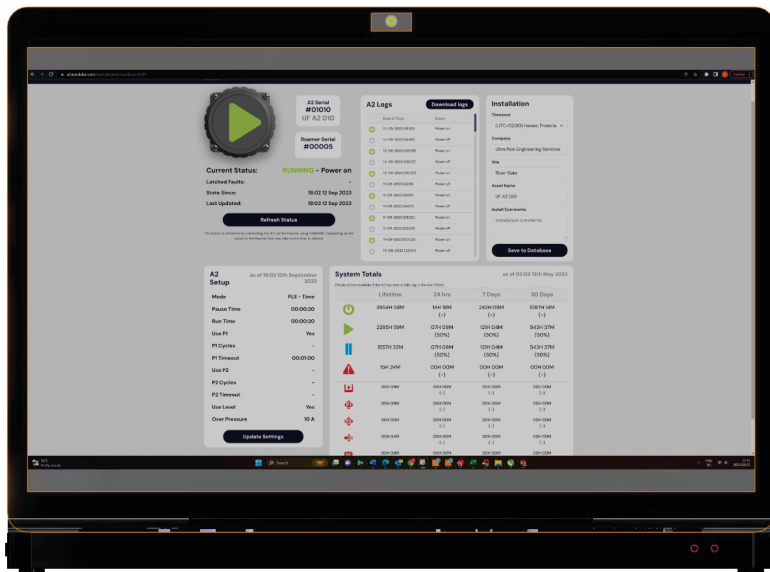
# A2 Universal Lubrication Controller, A2 App and A2 GSM Roamer Industrial IOT Module

Data anywhere anytime



Ultra Flow SA

The A2 controller is a universal lubrication system panel capable of handling all common lubrication systems from the simplest run - pause timer through progressive and single line systems. Innovative algorithms also give new flexibility and greater control over traditional single line systems. The easy to use A2 Lubrication Controller allows information to be easily accessed making smarter decisions to event logging and changing controller settings via the GSM network without having to send a technician to site.



Optional Training Demo Kit

## Typical Industries



Heavy Construction



Road Transport



Marine



Agriculture

## Mounting Bracket

Universal Bracket for mounting flush or Dash board mount. Strong Engineered ABS

## Lexan Decal

Resin thermoplastic. High-performance, weather-resistant material.

## OLED Display

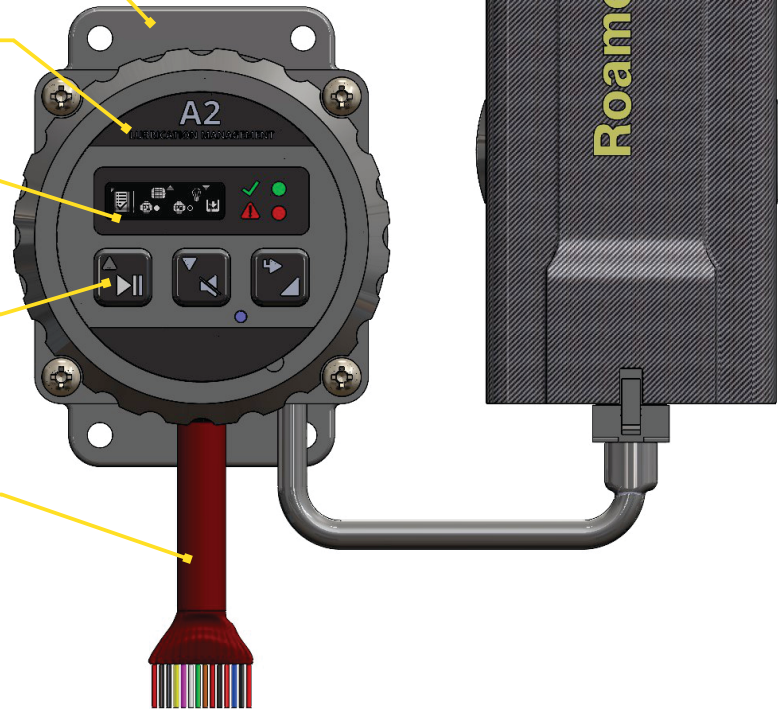
OLEDs enable emissive high resolution display with clear pixel control

## Membrane Keypad

A membrane keypad whose "keys" are not separate, moving parts, but rather are pressure pads that have only outlines and symbols printed on a flat, flexible surface.

## Wiring Harness

Wiring Harness optional supply in 10M, 7M and 5M length.



## Roamer

The Roamer is an Industrial Internet of Things (IOT) module which runs on any global mobile network. Designed for the use specifically with the A2 Controller with a Roamer connected you can access all of your data anywhere, anytime as well as making adjustments to A2 without sending a technician to site.  
[www.a2autolube.com](http://www.a2autolube.com)



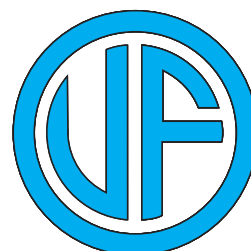
## SPECIFICATIONS

VOLTAGE: 10.5Vdc to 30Vdc  
CURRENT DRAIN: 15mA Max (No Load) 10mA Nominal  
PUMP OUTPUT: 12A Continuous, 15A for 15 Sec, 20A for 6 Sec  
HIGH CURRENT OUTPUT: 50A Continuous  
LAMP OUTPUT: 5A Max  
SWITCHING: Solid State Short Circuit Protection  
FUSE: Electronic Fuse (60A)  
CONNECTION: 14 Way Molex Minifit - JR  
COMMUNICATIONS: RS232  
BLUETOOTH: LE Connection (Low Energy Interface)  
RANGE: > 20M  
ROAMER: RS232 Out GSM Module  
COMPLIANCE: RoHS Directive 2002/95/EC (Lead Free)  
DIMENSIONS: 95mm X 78mm X 38mm (including mounting bracket)  
WEIGHT: 120g  
PROTECTION: IP54  
TEMPERATURE RANGE: -30° C to 60° C

## FEATURES

- » Runs progressive, single line lubrication systems.
- » Real time clock logs date and time of faults (6000 records).
- » RS232 serial port allows connection to GSM Module.
- » Option to connect to GSM modem allowing remote monitoring via GSM networks.
- » Bluetooth Connection via the A2 app available on the goggle play store and Apple Store.
- » Timing intervals from 5 seconds to 99 hours.
- » Cycle Counting.
- » 10Vdc to 30Vdc operation.
- » Short circuit/open circuit detection with audible warning.
- » External fault lamp drive (Flash or steady output)
- » Low level sensing.
- » Two proximity/ switch inputs.
- » Inputs can accept all industry standards from simple switch contacts to NPN/ PNP, N/O and N/C sensors.
- » Two sensor switch inputs.
- » Blockage detection.
- » Visual & audible fault indication.
- » Non-volatile memory.
- » Built in E Fuse.
- » OLED display .
- » Simple "Lube Logic" setup procedure.
- » Test mode allows testing of all the circuits connected to the A2 Controller for verifying.
- » Practical inovative housing with mounting bracket.

## ONLINE SIMULATION FOR TRAINING



Ultra Flow SA  
Unit 15, Montague Park, 24 Stella Road  
Montague Gardens, Cape Town  
7441.

[www.ultraflowsa.com](http://www.ultraflowsa.com)  
[www.ultra-flow.com](http://www.ultra-flow.com)

Tel: +2721 5517497  
Tel: +2721 5517496

<https://ultra-flow-software.s3.eu-west-2.amazonaws.com/A2-Demo-App/setup.exe>