



**Build
With
Us**



TDOT
Department of
Transportation

**Commissioner Butch Eley
DBE Luncheon
August 27, 2024**

Single-Largest Transportation Investment



- Landmark federal investment nearly **\$400M**
- TDOT & ARDOT Commitment up to **\$250M** each



I-24 Southeast Choice Lanes Project

Project Overview

- Construction of new, optional lanes on I-24 southeast
- 26 miles between Nashville and Murfreesboro*

Current Status

- Preliminary design
- Environmental studies

Upcoming Activities

- Public meetings to review design concepts and more
- Environmental documents
- Policy decisions
- Stakeholder and community engagement, including WeGo



What to Expect

10-Year Plan



3-Year Pavement Plan



3-Year Bridge Plan



3-Year Alternative Delivery Plan



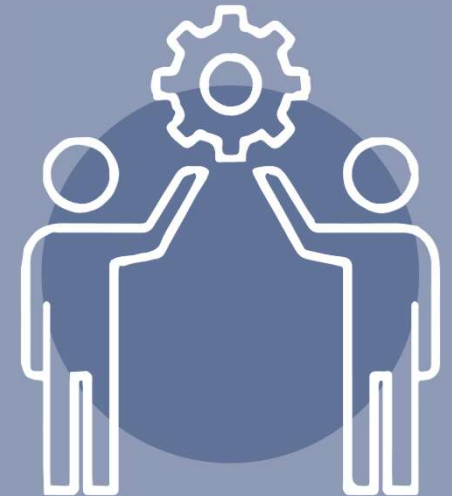
We are 1 Team - Team Tennessee



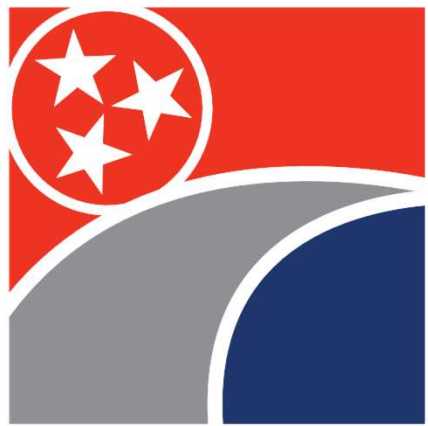
Predictability



Commitment



Partnership



Tennessee

Build With Us