



BCC SOURCE
LOW COST SUPPLY

Best Cost Country Sourcing Europe

Company overview

“Efficient, end-to-end customized sourcing and trading partner for construction, automotive, aftermarket and industrial system components across Europe”



About us

Best Cost Country Sourcing Europe (BCC) is a Dutch procurement company that offers end to end customized supply chain solutions for European B2B/B2C customers with reliable supply base primarily in Türkiye and Eastern Europe, India, China whom called business partners.

We specialize in cost-effective sourcing of mechanical components, metal fabrication, aluminum panels, aluminum profiles with fabrication, casting, forging, plastic, rubber and commercial vehicle aftermarket parts such as hydraulic gear pumps, fuel tanks, and NOx sensors. Our value proposition is delivering fast, high-quality, and turnkey solutions with reduced total cost of ownership.



Product overview

Ready to supply group

Passionate about low lead-time delivering unbeatable quality at remarkable costs while crafting a trusted trading with lowest possible total cost of ownership.

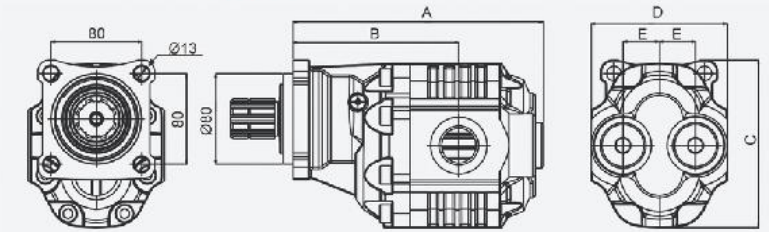
* Online store available for B2C

Reliable, ready-to-go Truck PTO Gear Pumps. Bi-rotational & ISO standard.

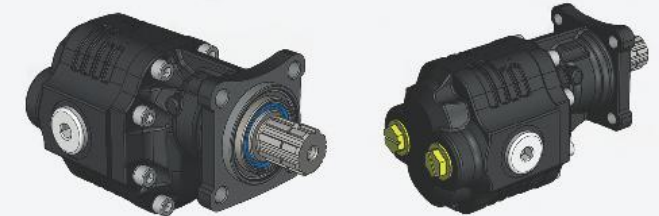
- Ensure seamless integration and optimal performance with BCC Source Truck PTO Gear Pumps—engineered for precision, bi-rotational operation, and ISO standard compatibility.
- Our product solutions deliver efficiency and reliability for fleet operators and aftermarket specialists.
- Interchangeable with Hyva, Binotto and Casappa same/similar displacement model.



BCC SOURCE TRUCK PTO GEAR PUMP
Bi-Rotational ISO 4 Holes



Part	Description	A	B	C	D	E	Units
3061BI4H	Gear Pump 61L ISO Bi-Rotational	207	135	147.2	121.2	32	mm
3082BI4H	Gear Pump 82L ISO Bi-Rotational	220.5	146.5	142.2	121.2	32	mm
30100BI4H	Gear Pump 100L ISO Bi-Rotational	231	146.5	147.2	130	32	mm



PTO Gear Pump Displacement	61 cc	82 cc	100 cc	
Reference	3061BI4H	3082BI4H	30100BI4H	
Port configuration	4 port	4 port	4 port	Units
Outlet - straight internal thread	1	1	1 1/4	* BSP inch
Minimum suction hose diameter	1 3/4	1 3/4	1 3/4	* BSP inch
Inlet - straight internal thread	1	1	1 1/4	* BSP inch
Shaft ISO 7653	8 * 32 * 36	8 * 32 * 36	8 * 32 * 36	mm
Oil temperature range (min / max)	- 40 / 80	- 40 / 80	- 40 / 80	°C
Inlet pressure range (suction side) (min / max)	0.7 / 3	0.7 / 3	0.7 / 3	bar
Recommended oil viscosity range (min / max)	12 / 100	12 / 100	12 / 100	mm²/s
Max. pressure for tipping applications	225	225	225	bar
Max. continuous pressure	200	200	200	bar
Max. peak pressure	230	230	230	bar
Max. speed at intermittent press.	2500	2500	2250	rpm
Min. speed at intermittent press.	300	300	300	rpm
Max. flow (at 1500 rpm)	91.5	123	150	l/m
Min. filtration	25	25	25	µm

NOx Sensors

Verified Quality. Fast Lead Time.

- We source and deliver OEM-grade NOx sensors for commercial vehicles — from trusted business partner, shipped directly across Europe.
- Clean emission systems
- Ready for system integration
- Commercial vehicle compatible
- Fast availability and delivery
- Quality-checked
- 12 months warranty
- Competitive prices

**BCC SOURCE**
LOW COST SUPPLY

BCC SOURCE NOx Sensors



NOx sensors are devices that measure harmful nitrogen oxide (NOx) levels in exhaust gases and provide critical data to vehicle emission control systems.

They detect NO and NO₂ components in the exhaust gas and transmit data to the engine control unit, ensuring emission control.



NOx sensors play a critical role in reducing carbon emissions and environmental pollution. By measuring harmful emissions in exhaust gases, they minimize the impact of vehicles on the environment.

Our sensors not only improve vehicle performance but also contribute significantly to a cleaner and more livable environment.

- OEM-Grade NOx Sensors
 - Competible with All Commercial/Passanger Vehicle Brands in the market for emission control systems
 - 285 different references and growing
- 12 months warranty
- Certified Production:
 - ISO 9001 : Quality Management
 - ISO 14001 : Environmental Management
 - ISO 45001 : Occupation Health and Safety
 - ISO 10002 : Customer satisfaction (effective complaints handling)
- The recommended installation angle of the nitrogen-oxygen sensor probe is $90^\circ \pm 10^\circ$. During the cold start stage, liquid accumulation in the sensor probe should be avoided as it may cause damage to the sensor.
- Installation torque: 50 ± 10 Nm.
- Power supply voltage: 12V DC.
- Operating environment temperature: -40°C to 125°C . The maximum exhaust gas temperature the probe can withstand is 800°C .
- During operation, the average power consumption is 10W, with a maximum peak power of 15.5W.
- IP Rating: IP6K4K.
- Conducted Tests
 - Sealing Test
 - Salt Spray Test
 - Voltage Coverage and Sensitivity Test
 - Thermal Shock Test
 - Aging Test



 sales@bccsource.com

 Best Cost Country Sourcing Europe / Helmond, the Netherlands

Fuel Tanks

Aftermarket-ready bare fuel tanks.
Steel or aluminum. ECE R34 certified. OEM-fit.

We deliver ISO and ECE R34 certified bare steel and aluminum tanks for commercial vehicles.

- Available in steel or EN 1024 aluminum
- Pressure-tested for safety & durability
- 12-month warranty
- Compatible with leading truck brands

We offer trusted aftermarket solutions with European compliance and fast lead times.

BCC SOURCE LOW COST SUPPLY | **BCC SOURCE Fuel Tanks (Steel / Alu)**
Bare tanks for Aftermarket

BETTER Products for Better ENVIRONMENT

MAN
SCANIA
VOLVO

DAF
IVECO
Mercedes-Benz



High-Quality Steel and Aluminum Fuel Tanks You Can Trust

At BCC Source, we proudly offer fuel tanks that are not only designed to meet the highest standards but are built with a clear commitment to quality, reliability, and international compliance.

Why Choose Our Fuel Tanks?

- Customer-Driven Innovation and production,
- ISO 9001, ISO 14001, ISO 45001 and ECE R 34 Certified,
- 12 months warranty,
- OEM Design Compatibility,
- 100% sealed pressure Tests for Reliability,
- Delivering unmatched value and long-term durability for commercial vehicles.
 - Min 2.5 mm EN 1024 / 3.1 ALUMINIUM plates are being used
 - Min 1.5 mm and Mostly 2 mm st 1303 DIN 1623 STEEL plates are being used

sales@bccsource.com | Best Cost Country Sourcing Europe / Helmond, the Netherlands

Coming soon...

Premium Glass-Glass bifacial Solar Panels for Veranda & Greenhouse and Overhead Installations

We are working on to deliver TUV and CE certified 270W and 400 W bifacial solar panels.

- Robust construction
- 12 years warranty
- Cost efficient
- Small batch delivery will be possible
- Details will be revealed soon...





Product overview Project base supply Group

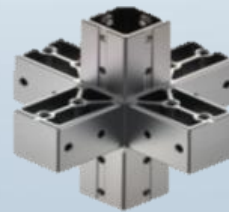
Passionate about low lead-time delivering unbeatable quality at remarkable costs while crafting a trusted trading with lowest possible total cost of ownership.

In General

- **Business Partners:** For all commodity/category that we are involved we have minimum 2 suppliers as business partner as well as many others to be reached out from our supply base.
- **Technical specifications:** Guaranteed by BCC obliged to follow technical specifications
- **Quality expectations:** Guaranteed by BCC obliged to follow customers' quality requirements
- **Quality Certifications:** ISO 9001 (all), ISO/TS 14949 (some), ISO 14001 (all), ISO 45001 (all) business partners own.
- **Machine park:** Every business partner have all necessary machines, equipment and test devices to comply with customers' requirements
- **Supply Chain:** On-time delivery, DDP in NL, DAP outside NL, Road and/or Sea Freight
- **Lead Times:** Between 4-8 weeks depend on commodity. Committed to provide lowest possible lead-time
- **Total Cost of Ownership:** Providing our best to provide as much transparency as possible for all concerned cost drivers.

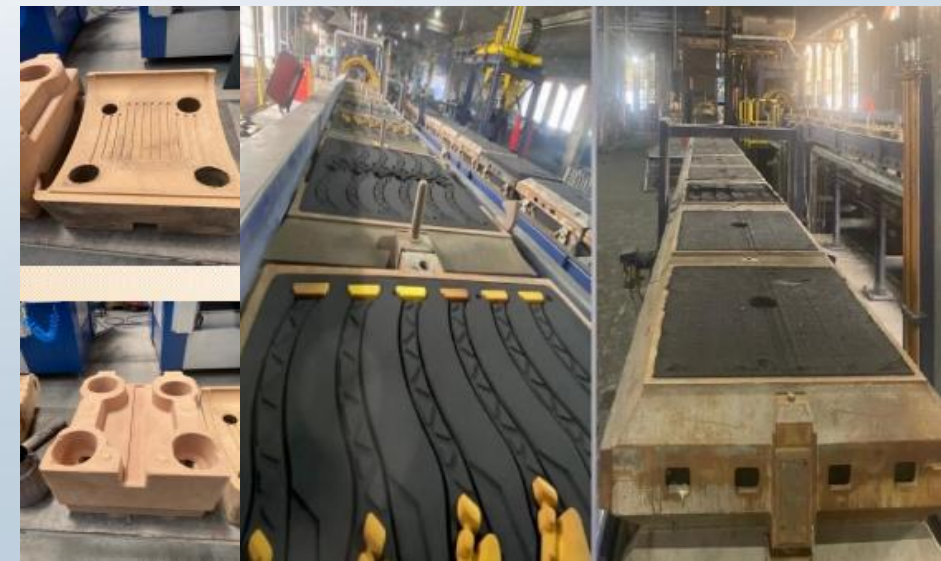
Aluminum Casting

- Casting, Deburring, Machining, Assembly Opt.
- Design and Engineering capability
 - Catia 3D CAD/CAM
 - Solidworks 2D & 3D CAD
 - AUTOCAD 2D CAD
 - Making necessary molds in-house
- High-tech machine park
 - From 150mt to 1100 mt total 7 die casting machines
 - HDPC and Gravity Casting
 - 2 x 800 kg gas melting furnaces
 - 3 x 900 kg electric dosing furnaces
 - 5 x 500 kg electric holding furnaces
 - 5 x CNC Milling machines
 - 2 x CNC Turning machines
 - 2 x surface grinding
 - 7 x EDM erosion machines
 - 6 x EDM wire cut machine
 - And auxiliary equipment's



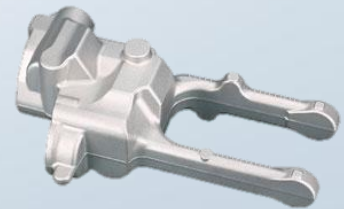
Iron / Steel Casting

- Casting, Deburring, Machining, Assembly Opt.
- Design and Engineering capability
 - Catia 3D CAD/CAM
 - Solidworks 2D & 3D CAD
 - AUTOCAD 2D CAD
 - Making necessary molds and inserts in-house
- High-tech machine park
 - Grey(EN 1561) / Sphero(EN 1563) / SiMo (Si40-Mo05, Si50-Mo10) materials
 - HWS EFA 5 SD Horizontal Molding Line (925x1010x650 mm, 60 molds/h)
 - 2 x induction furnace (2mt/h Melting capacity)
 - 2 x holding furnace (1,5mt x 2)
 - 2 x cold box (10 & 25 liter core molding)
 - Eirich sand preparation and mixer (300mt) systems
 - Spectrometer
 - ZEIS Prismo 3D CMM



Carbon Alloy (Steel) / Non-Carbon (Alu, Copper, Brass) Forging

- Warm and Hot Forging, Deburring, Sand Blasting, Machining.
- Design and Engineering capability
 - Catia 3D CAD/CAM
 - Solidworks 2D & 3D CAD
 - AUTOCAD 2D CAD
 - Making all production related molds and fixtures are in-house
- High-tech machine park
 - Automatic presses with a robot-controlled pressing force of 150-4000 tons
 - Various types of forging components with different sizes, weighing between 0.25 kg - 400 kg
 - Multiple-Spindle Machining, 5-Axis Machining, CNC Turning Machining, CNC Lathe, CNC Milling
 - Vibration Grinding, Sand blasting

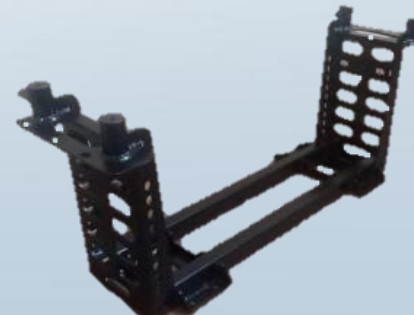
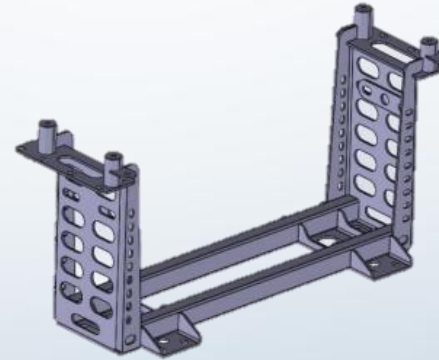
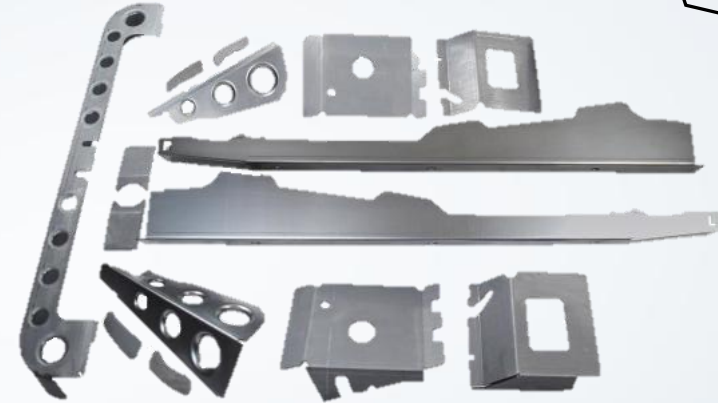


-
- 10 Most Common Manufacturing Processes
- Injection Molding
 - Catia
 - SolidWorks
 - AUTOCAD
 - Makino
 - Design and Manufacturing
 - Anytime
 - Anytime
- 14



Metal Fabrication

- Forming, Welding, Coating, Painting, Assembly Opt.
- Design and Engineering capability
 - Catia 3D CAD/CAM
 - Solidworks 2D & 3D CAD
 - AUTOCAD 2D CAD
- High-tech machine park
 - Steel / Stainless / Corten / Aluminum materials
 - 2D Laser cutting
 - 3D Laser cutting
 - Tube CNC Laser cutting
 - CNC Pres bending
 - CNC Cylinder bending
 - Tube/Metal Bar/Profile Bending
 - Laser welding
 - Synergic Welding
 - Gas welding





Projects so far...

Passionate about low lead-time delivering unbeatable quality at remarkable costs while crafting a trusted trading with lowest possible total cost of ownership.

Metal Fabrication - Successful Projects

Customer: in Netherlands,

Business Area: Street Furniture

Portfolio: All products of the customer

Operations: Lazer cutting, Bending, Welding, Sand Blasting, Hot-Dip-Galvanizing, Powder Coating, Sub-Assy

Materials: Mild steel, Stainless steel

Revenue 2024: 200k EUR

Revenue 2025: 100k EUR and will further grow (project base)

Incoterm: DDP



Metal Fabrication - Successful Projects

Customer: in Germany and in Croatia

Business Area: Automotive

Portfolio: Bottom-Roller cart in fully-automized machining cell

Operations: Lazer cutting, Bending, Welding, Hot-Dip-Galvanizing, Powder Coating, Fully Assembled

Materials: Mild steel

Revenue 2025: 50k EUR, delivery in July 2025 (project base)

Incoterm: DAP



Customer: in Austria

Business Area: Veranda, Outdoor Living, Home improvement

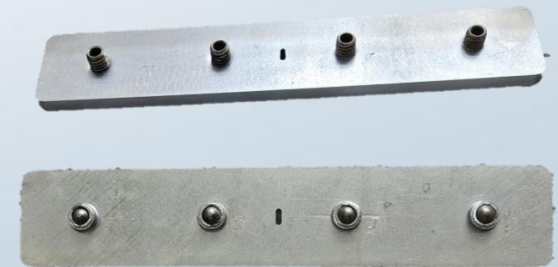
Portfolio: All products of the customer

Operations: Lazer cutting, Bending, Stamp forming, Zink galvanize coating, Assembly

Materials: Mild steel

Revenue 2025: 40k EUR, delivery in June 2025 (serial base)

Incoterm: DAP



Casting - Successful Projects

Customer: in Netherlands

Business Area: Agriculture

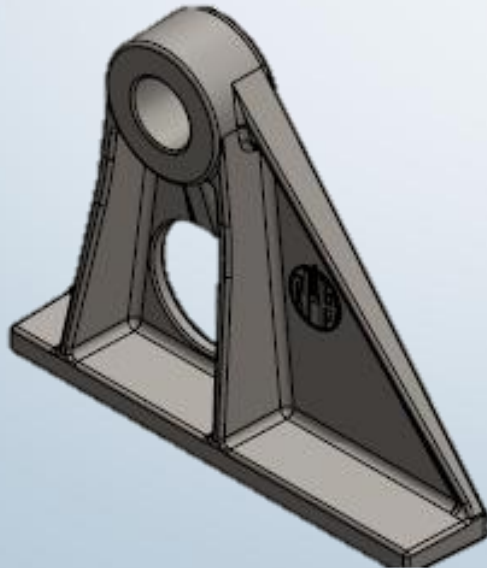
Portfolio: casted and machined bracket

Operations: Casting, de-burring, machining, powder coating

Materials: Iron

Revenue 2025: 150k EUR, delivery at the end of 2025 (serial base)

Incoterm: DDP



Customer: in Netherlands

Business Area: Automotive

Portfolio: casted and machined bracket

Operations: Casting, de-burring, machining

Materials: Aluminum

Revenue 2025: 200k EUR, delivery at the end of 2025 (serial base)

Incoterm: DDP



Forging and Machining - Successful Projects

Customer: in Germany

Business Area: Industrial trucks and intralogistics solutions

Portfolio: forged and machined bracket

Operations: Forging, de-burring, machining

Materials: Brass (copper based, non-carbon metal)

Revenue 2025: 350k EUR, discussions still on-going (serial base)

Incoterm: DAP



Customer: in Netherlands

Business Area: Automotive

Portfolio: machined products

Operations: machining (cutting, CNC turning, CNC Milling, CNC Lathe), honing, coating

Materials: Steel

Revenue 2025: 250k EUR, delivery at the end of 2025 (serial base)



Plastic Injection and Rubber - Successful Projects

Customer: in Austria

Business Area: Veranda, Outdoor Living, Home improvement

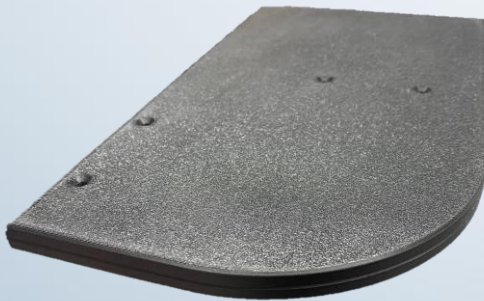
Portfolio: Plastic Injection parts

Operations: Plastic injection, de-burring

Materials: POM

Revenue 2025: 25k EUR, delivery on October 2025 (serial base)

Incoterm: DAP



Customer: in Netherlands

Business Area: Automotive

Portfolio: rubber, rubber to metal

Operations: rubber injection (vulcanization), de-burring, coating

Materials: NBR, Natural Rubber

Revenue 2025: 150k EUR, discussions still on-going (serial base)

Incoterm: DDP



Others - Successful Projects

Customer: in Austria

Business Area: Veranda, Outdoor Living, Home improvement

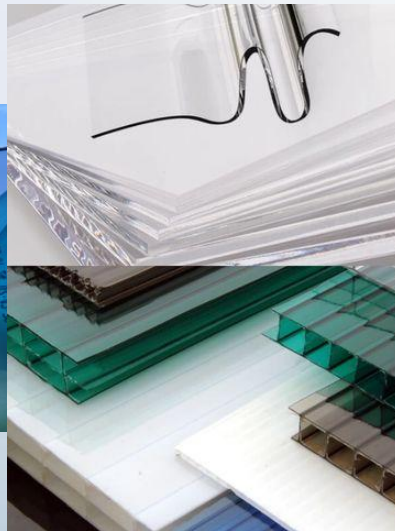
Portfolio: PMMA Glass sheet

Operations: PMMA Extrusion, cutting

Materials: PMMA

Revenue 2025: 100k EUR, delivery on September 2025 (serial base)

Incoterm: DAP



Customer: in United Kingdom

Business Area: Construction

Portfolio: Natural Cork for Insulation on wall

Operations: Natural cork in granules

Materials: Natural Cork

Revenue 2025: 35k EUR, discussions still on-going (serial base)

Incoterm: DAP



Growth strategy

- **2025:** Expand sales team in EU especially in Germany, Austria, France, BeNeLux and Spain
- **2026:** Warehousing with a Legal entity in Austria for primarily ready to supply group
- **2027:** Branch office in Türkiye and/or Eastern Europe for procurement activities.





Thank you

Önder Küçün
Managing Director
+31 6 1596 8383
bccsourcing@bccsource.com
www.bccsource.com