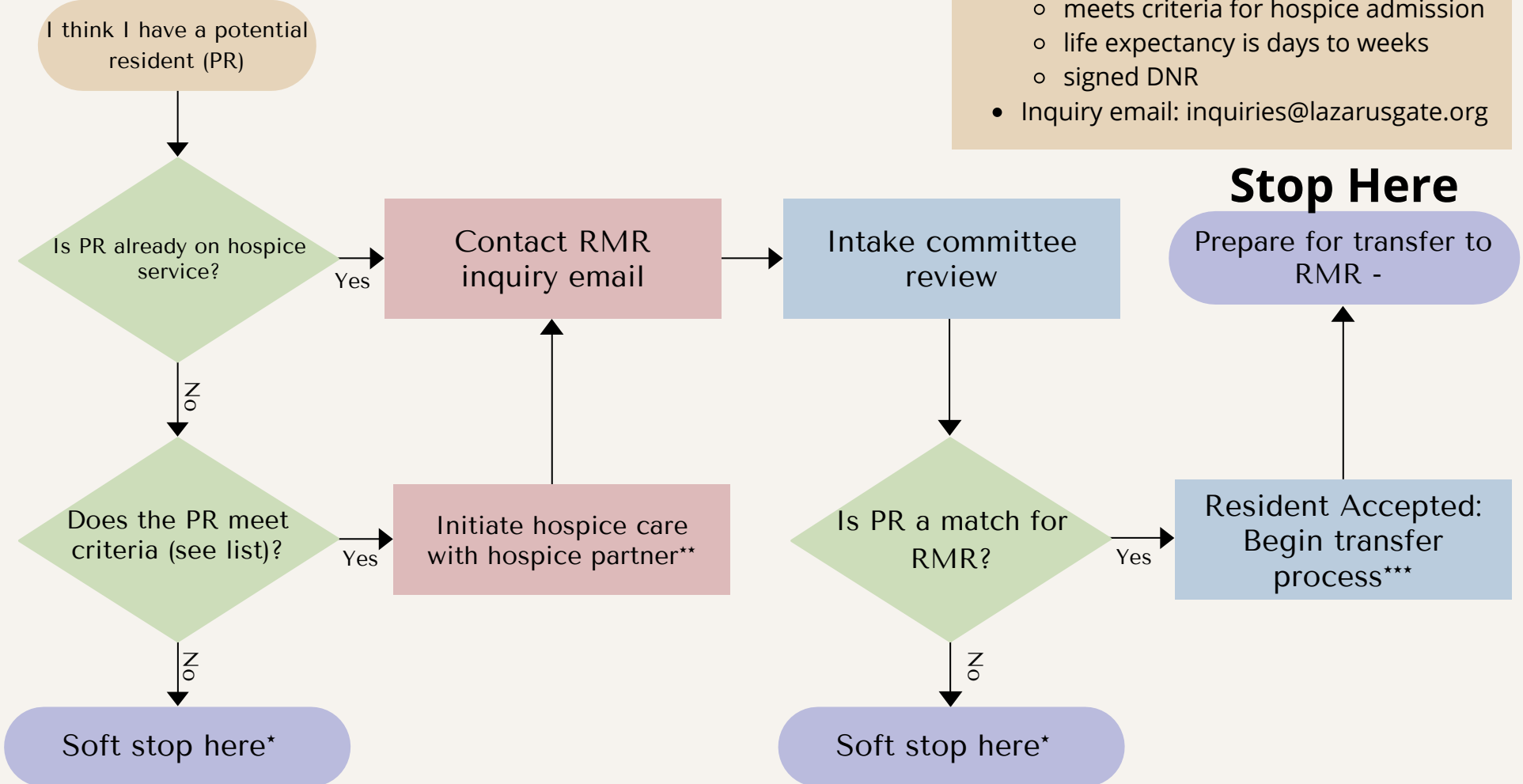


# ROCKY MOUNTAIN REFUGE WORKFLOW

## Additional Information

- Potential Resident (PR) Criteria
  - currently unhoused
  - meets criteria for hospice admission
  - life expectancy is days to weeks
  - signed DNR
- Inquiry email: [inquiries@lazarusgate.org](mailto:inquiries@lazarusgate.org)

## Start Here



\* consider restarting the workflow if the PR situation changes

\*\* RMR works directly with Tru Community Care and The Denver Hospice

\*\*\* Background check and request for residency forms completed and MaxFund contacted if PR has a pet needing care