



INSTRUCTION MANUAL



BLADELESS FAN TOWER

Heating & Cool Breeze





IMPORTANT SAFETY INSTRUCTIONS

Read this manual thoroughly before first use, even if you are familiar with this type of product. The safety precautions enclosed herein reduce the risk of fire, electric shock and injury when correctly adhered to. Make sure you understand all instructions and warnings. Keep the manual in a safe place for future reference, along with any warranty information, your purchase receipt and the original carton. Always follow basic safety precautions and accident prevention measures when using an electrical appliance, including the following:

1. **VOLTAGE:** Make sure your outlet voltage and circuit frequency correspond to the voltage stated on the appliance rating label.
2. **WATER:** To protect against fire and electric shock, do not immerse the cord, plug or fan in water or other liquid. Ensure your hands are dry before handling the plug or switching on the fan. Do not use the fan outdoors, on wet surfaces or expose it to weather. Protect it from liquid spills. Do not use it near a bathtub, laundry sink, pool or similar where it could accidentally fall into water.
3. **DAMAGE:** Check the power cord regularly for visible damage. If the cord is damaged, it must be replaced by the manufacturer, its authorised service centres or appropriately qualified personnel in order to avoid any hazards.

WARNING!

Do not pick up or operate the fan if the supply cord, plug or housing is damaged, or after it malfunctions or has been dropped or damaged in any manner. If damaged, contact our after sales support centre for advice.

3. PROTECT THE POWER CORD:

- Do not operate the fan with the cord coiled up; always fully unwind.
- Do not twist or kink the cord or let it touch heated surfaces.
- Do not put any stress on the cord where it connects to the product.
- Never carry the fan by the cord.
- Arrange the cord away from any traffic area so no one will trip over it.
- Do not run the cord under carpeting or cover it with rugs or runners.

WARNING!

No extension cord, no timer: Do not use this fan with an extension cord, plug adaptor, external timer or separate speed control device.

4. **CONNECTION:** To insert the plug, grasp it firmly and guide it into outlet.
5. **DISCONNECTION:** Always switch off and unplug the fan from the power outlet when it is not in use and before cleaning, servicing, moving or storing the appliance. Grasp the plug and remove it from the outlet, do not pull the cord when disconnecting.

6. RCD: Unless your home is already fitted with a residual current device (safety switch), we recommend installing an RCD with a rated residual operating current not exceeding 30mA to provide additional safety protection when using electrical appliances. See your electrician for professional advice.

7. WALL OUTLET: A loose fit between the wall outlet and plug may cause overheating and distortion of the plug. Discontinue use of the product in this outlet and contact a licensed electrician to replace the loose or worn outlet.

8. DOMESTIC USE ONLY: This appliance is intended to circulate the air in indoor spaces. It is not intended for commercial, industrial or outdoor use. Do not use it for anything other than its intended purpose, and only use it as described in this manual. Any other use may cause fire, electric shock or injury.

9. NO CLOTHES DRYING: Do not use this fan as a dryer.

10. ATTACHMENTS: The use of accessory attachments not recommended in this manual may cause injury or hazards.

11. MISUSE: We accept no liability for any damages or personal injury caused by misuse of the product and/or failure to follow these instructions.

12. USAGE RESTRICTION: This fan is not intended for use by persons (including children) with reduced physical, sensory or mental capabilities, or lack of experience and knowledge, unless they have been given supervision or instruction concerning use of the appliance by a person responsible for their safety

13. CHILDREN: This fan is not a toy. Supervise children to ensure they do not play with it. Close supervision is necessary when any appliance is used by or near children.

WARNING!

Do not leave unattended during use! Always switch it off and unplug when not in use, if left unattended and before cleaning and storing.

14. LOCATION: Place the fan on a dry, flat, stable surface to avoid overturning.

15. DISASSEMBLY: Do not disassemble the appliance. Do not modify it for any other purpose.

WARNING!

DO NOT use the fan in the following areas:

- Near an open flame, a hot burner, oven or other source of high heat.
- Outdoors or near a sink, bathtub, washer, pool or any source of water.
- Near curtains, draperies, tablecloths and other fabrics, since they may be drawn into the fan, damage the motor and /or cause a fire.
- In areas where paint, petrol, etc. is stored and there is a risk of explosion or fire from flammable gases, or in areas where substances are being sprayed.

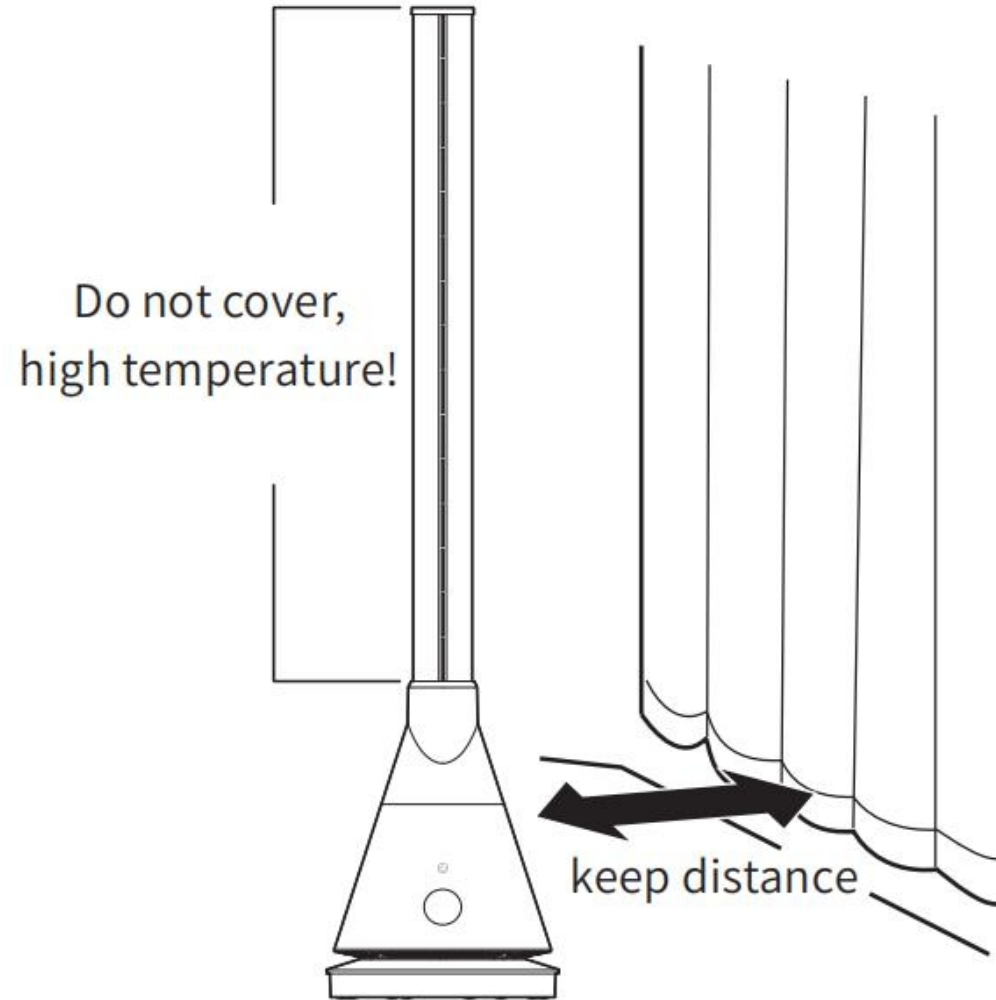
CAUTION!

Personal safety:
Avoid contact
with moving
parts. Never insert
fingers, pencils or
any other objects
into openings in
the housing when
the fan is running.
Keep hair and loose
clothing well away
from the fan when
in use.

FREE AIRFLOW

Ensure nothing is blocking the air
outlet and intake.

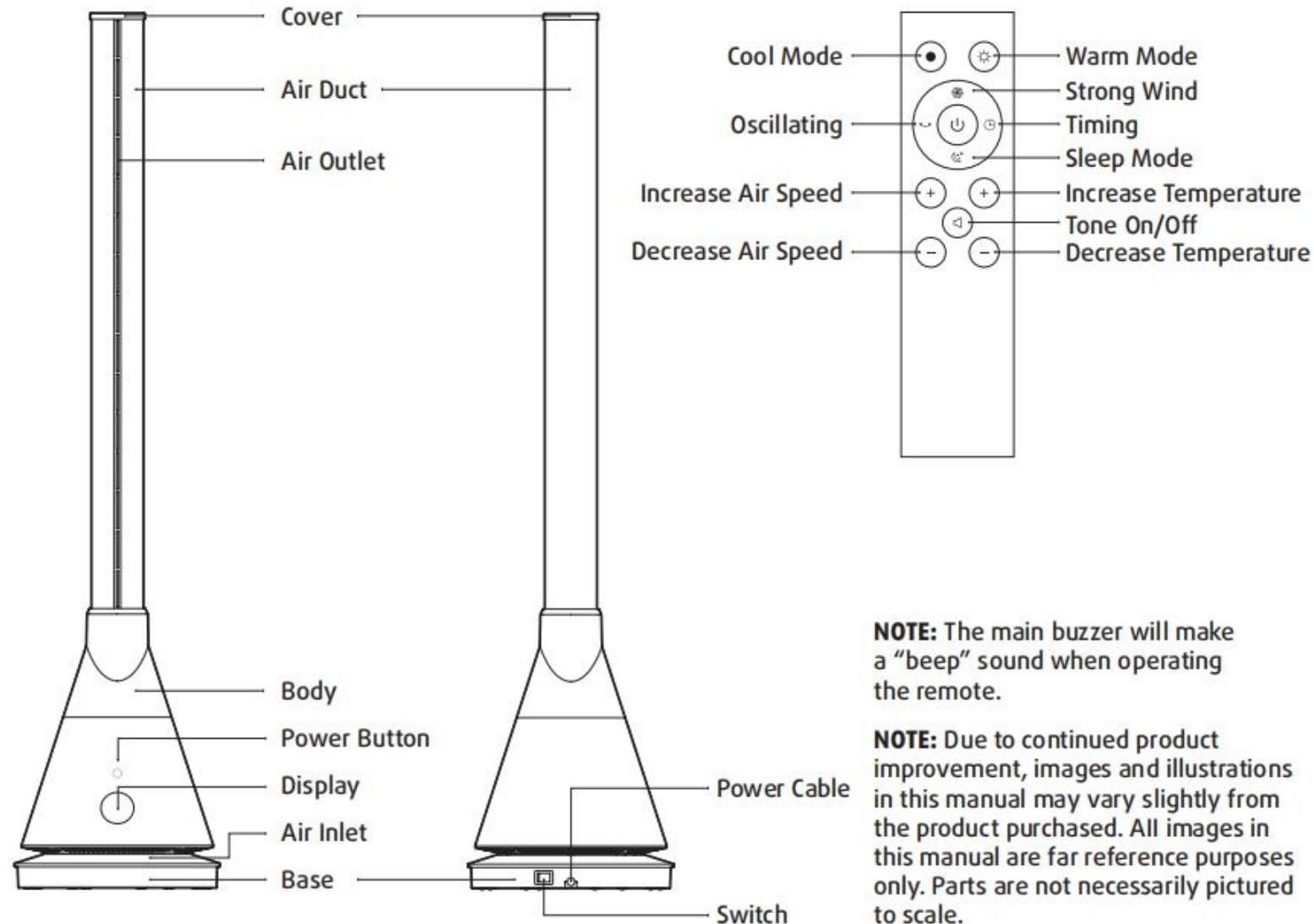
Do not insert foreign objects into
any openings as this
may cause electric shock and/or a
fire hazard



Do not place anything
within 1 meter

PRODUCT OVERVIEW

This product uses PTC heating, transferring heat by hot air, which can quickly increase room temperature. Features no open flame and is safe and efficient in comparison.



GETTING STARTED

UNPACKING

1. UNPACK: This product has been packaged to protect it against transportation damage. Unpack the appliance and keep the original packaging carton and materials in a safe place. It will help prevent any damage if the product needs to be transported in the future, and you can use it to store the appliance when it is not in use. In the event it is to be disposed of, please recycle all packaging materials where possible.

2. SAFE PACKAGING DISPOSAL: Plastic wrapping can be a suffocation hazard for babies and young children, so ensure all packaging materials are out of their reach and disposed of safely.

3. CHECK POWER CORD: Unwind the cord to its full length. Inspect the power supply cord and plug, and all other parts of the appliance, for visual damage. Do not use the appliance if anything appears to be damaged or not working properly. In case of damage, contact our after sales support centre using the details at the bottom of the page.

4. READ INSTRUCTIONS: Make sure you have read and understood all instructions and warnings in this manual. Refer to the Product Overview, to familiarise yourself with the product and identify all parts. Pay particular attention to the safety instructions on the previous pages.

5. REMOTE CONTROL: Battery installation method:

- Open the remote control battery cover;
- Load two new AAA dry batteries;
- Close the battery cover of the remote control.

WARNING!

Keep batteries out of reach of children. Swallowing may lead to serious injury or death in as little as 2 hours due to internal burns. If swallowed, go straight to a hospital emergency room. Dispose of used batteries immediately.

INSTRUCTIONS

REMOTE CONTROL



The device can be switched on and off by pressing the "ON & OFF" button



Press Sleep mode button on the remote control
The display shows LL and the wind speed become minimum. Press again to exit the sleep mode.

(Only works in 'Cooling' mode)

You can also exit the current mode by pressing the Wind Strength + button)



Only works in cooling mode. Press Turbo mode button on the remote control. The display shows HH and the wind speed become max. Press again to exit the turbo mode.

(You can also exit the current mode by pressing the Wind Strength + button.)



Press the Oscillation button to turn on the oscillation function. This fan can swing left and right 80 degrees. Press this button again to stop oscillating.



Press button to turn off/on fan beep tone.



In cooling mode, the LED lamp is blue. Press this button to activate the cooling mode.

Note: The default start mode is the cooling mode.



Press the "+" button on the left side of the remote control to increase the volume of air, press the "-" button on the left of the remote control to decrease the airflow.

Note: Cool mode has 9 speed settings, warm mode has 4 air speed settings.



The display number in heat mode is orange. Press this button to activate the heat mode.

Note: In heat mode there is no Turbo mode and Sleep mode.



In heat mode, press the temperature button on the right side of the remote control to set the temperature (1-30°C).

Note: this button does not work in cool mode.



Press the timer button on the remote control to set 1 to 8 hours of timing.

WARNING!

The switch on remote will turn this fan to standby, not complete shutdown. Use the switch on the main unit to completely power off when this fan not in use. If this fan not in use for a long time, please unplug the power cord.

HEATING MODE INSTRUCTIONS

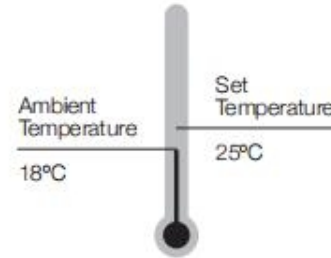
Press the warm mode button and the display shows the ambient temperature.

Press temperature button to set the temperature, and the display will flash digitally, which can be set to 1-30 °C.

Set temperature should be higher than the ambient temperature, so that the heating function will be turned on;

When the ambient temperature reaches the set temperature, the heating function will stop and turn into a cool breeze;

The ambient temperature is lower than the set temperature and the heating function will automatically activate.



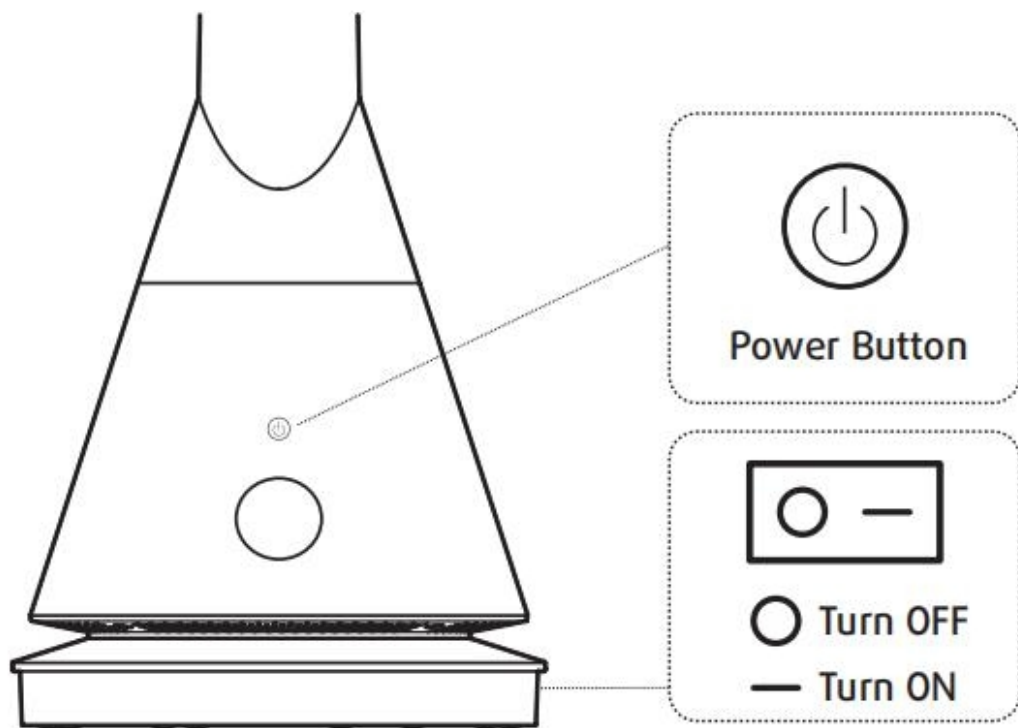
Set temperature > ambient temperature: heating function on.

Set temperature ≤ ambient temperature: heating function stops

NOTE: The default setting temperature is 25°C. In the warm mode, when the ambient temperature is below 0°C, the display only shows 01, do not display negative temperature value. The warm air mode run over 9 hours; the machine will automatically stop running. Restart by pressing the main body power button or by using the remote control.

WARM MODE: Can only be set and controlled from the remote control. Not controllable directly on fan tower touch button.

INSTRUCTIONS



CONTROL VIA MAIN BODY

Insert the plug into socket, turn on power switch, AuraLine enters the standby mode:

Touch the power button of the main body, the beep tone will prompt you to click, and the fan will start running. Press and hold the power button for 2 seconds, the beep tone will prompt you twice, and then stop running after you release.

Change Air Speed

When AuraLine is in operation: click the main power button to switch the air volume from 1 to 9.

Oscillating operation

Press and hold the power button for 1 second, the beep tone will beep once and fan start oscillating.

Press and hold the power button for 1 second again, the beepn tone will beep once, and and the fan will stop oscillating.

OTHER USEFUL INFORMATION

WARNING!

Before cleaning, maintenance or moving the fan, always switch off the fan and unplug it from the wall outlet.

Do not immerse the fan in water or other liquids. Do not spray it with liquids. Do not allow water to drip on or into the fan motor housing.

Never use petrol, solvents, harsh detergents, or abrasive or alkaline cleaners on the fan.

TROUBLESHOOTING

If your fan fails to operate, or you experience any other problem with the fan, contact our after sales support centre for advice or to arrange a service. But before phoning for a service, please ensure that your fan is properly connected to your power supply, the outlet socket is working, and the air outlet is clean.

CLEANING AND MAINTENANCE

Clean your fan regularly to ensure proper and reliable operation.

CLEANING THE TUBE

Ensure the fan is switched off and unplugged.

Clean the tube and air outlet periodically with a vacuum cleaner nozzle (soft brush) to remove any dust or dirt that may have accumulated inside or on the unit. Alternatively, use a soft damp cloth, but ensure it is not too wet.

For intense cleaning, disassemble the tube by twisting the conical bottom of the tube counter clockwise. Use running water to rinse the inside of the tube and dry it thoroughly afterwards.

CAUTION!

Do not install the tube onto the fan until it is completely dry. Do not place the tube in a dishwasher. Always reinstall the tube before use.

CLEANING THE BODY

Make sure the fan is switched off and unplugged.

Wipe the fan body surface with a damp cloth. Use a vacuum cleaner or soft brush to clean the air intake which is located at the bottom of the fan body.

If the fan is used in a greasy environment, such as a kitchen, mild soap or a common household cleaner may be necessary. Do not use solvents. Do not rinse the fan body or immerse the fan body in water.

STORAGE

In the off season, store the clean and dry fan in a safe, dry location, protected from dust. We recommend using the original carton for storage. Alternatively, place a large plastic bag or piece of material over the top of the cleaned appliance for dust protection.

SERVICE/REPAIR

Apart from occasional battery replacement for the remote control, the fan requires no maintenance and contains no user-serviceable parts. Do not attempt to take it apart, repair or modify it. Do not operate the fan if its power cord or plug is damaged, or when it is working abnormally. In case of damage or malfunction, or if the cord is damaged, have the unit repaired by trained personnel only, or contact the after sales support line for advice on repair or replacement.

BATTERY REPLACEMENT

If the battery in the remote control is flat, a new CR2025 (or equivalent) battery needs to be inserted. Follow the instructions below: Push the locking tab to one side and pull out the battery compartment at the back side of remote control. Remove the old battery from the remote control and insert a new one of the same type, observing the battery polarity. Push the battery compartment back into the remote control.



OTHER USEFUL INFORMATION

WARNING!

Keep batteries out of reach of children. Swallowing may lead to serious injury or death in as little as 2 hours due to internal burns. If swallowed, go straight to a hospital emergency room. Dispose of used batteries immediately.

OTHER BATTERY PRECAUTIONS

- Do not open the batteries or short-circuit them.
- Do not mix different types of batteries. Due to increased risk of leakage, empty batteries should be removed. The batteries should also be removed from the remote control if it is not being used for long periods.
- Only dispose of batteries when they are fully discharged.
- Never throw batteries into a fire or subject batteries to high temperatures.
- Used batteries should not be disposed of in household waste. Dispose of them in accordance with statutory regulations.

TECHNICAL SPECIFICATIONS

Rated Power	1800W
Rated Frequency	50-60Hz
Model	8H
Cool Mode Power	30W
Oscillating Angle	80°
Timer	1-8h



CLASS II – DOUBLE INSULATED APPLIANCE

This symbol indicates that the appliance has been designed in such a way that it does not require a safety connection to electrical earth (ground).

COMPLIANCE

This appliance has been fully tested and meets all requirements as set out by standards AS/NZS 60335.1 and AS/NZS 60335.2.80.

RESPONSIBLE DISPOSAL

At the end of its working life, make the appliance unserviceable by unplugging it from the power outlet and cutting the power cord. Do not throw this appliance out with your household rubbish. Electrical and electronic products contain substances which can have a detrimental effect on the environment and human health if disposed of inappropriately. Observe any local regulations regarding the disposal of electrical consumer goods and dispose of it appropriately for recycling. Contact your local authorities for advice on recycling facilities in your area.

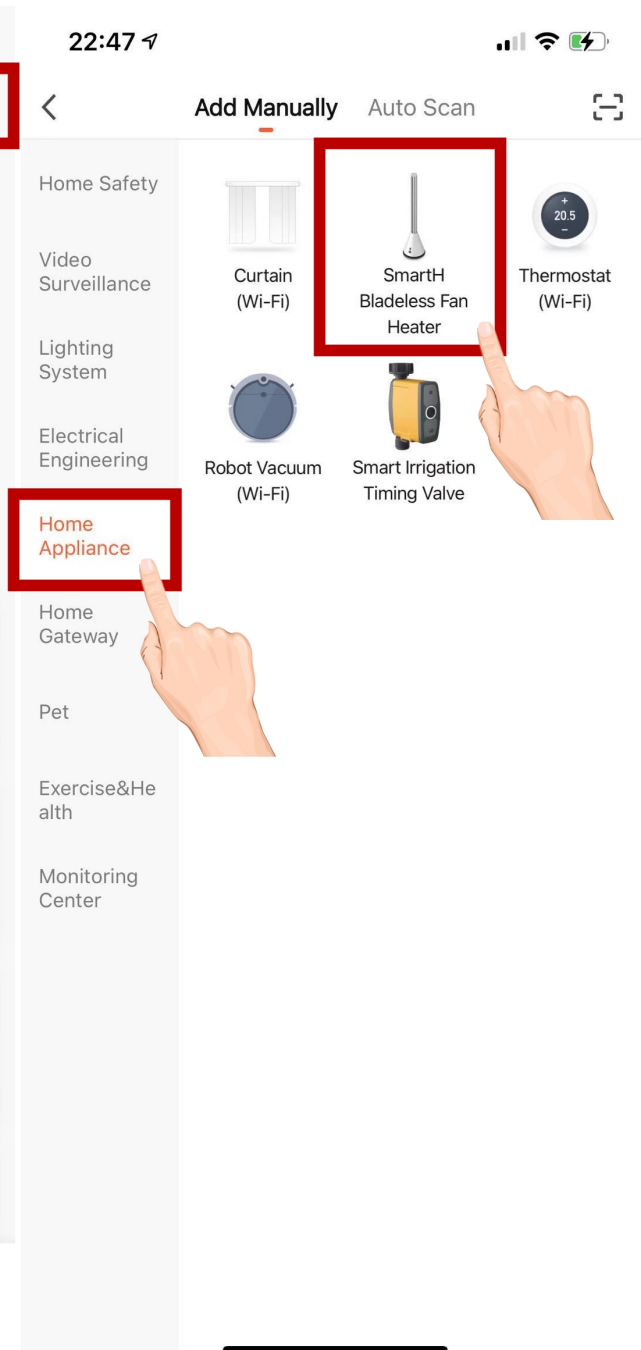
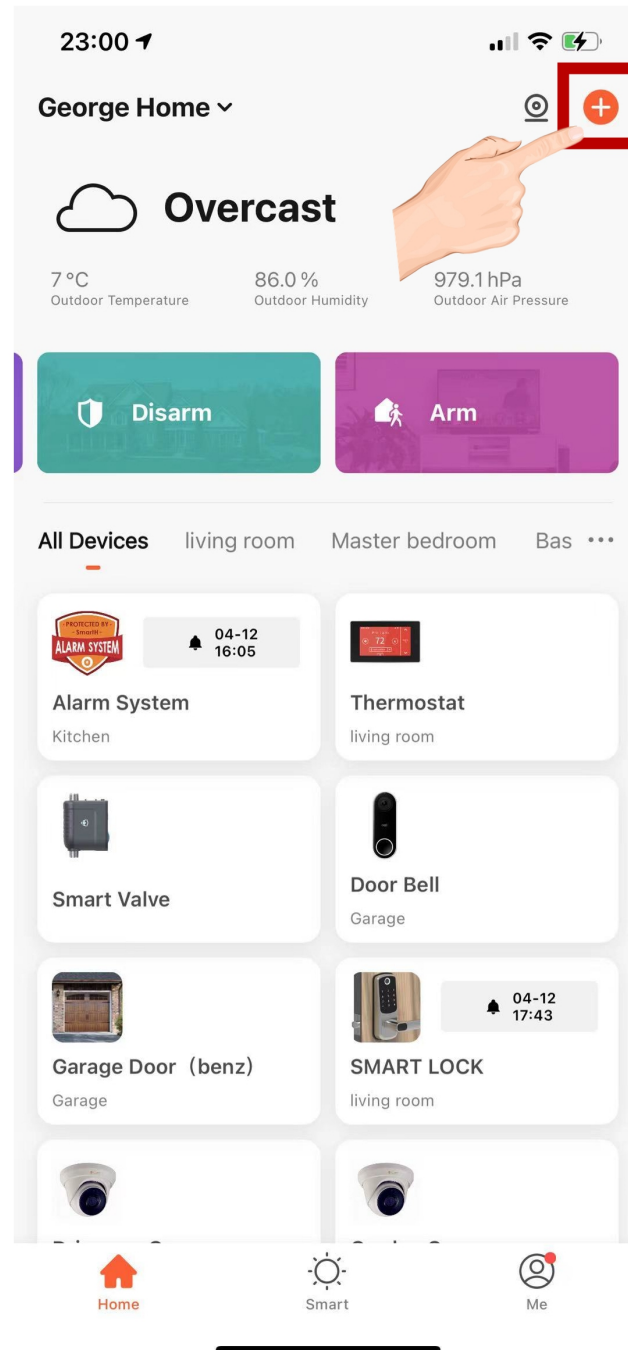
Install Free App

Download APP: scan the QR code below to download and install. Register and login: open the "MySmarth" APP to register and login according to the prompts.



Make sure Wi-Fi is available and connected to the Internet.

- Open "MySmarth" APP, press the '+' in the upper right corner of the main screen;
- choose "Home Appliance", click "Smarth Fan"; and then click "Next step";





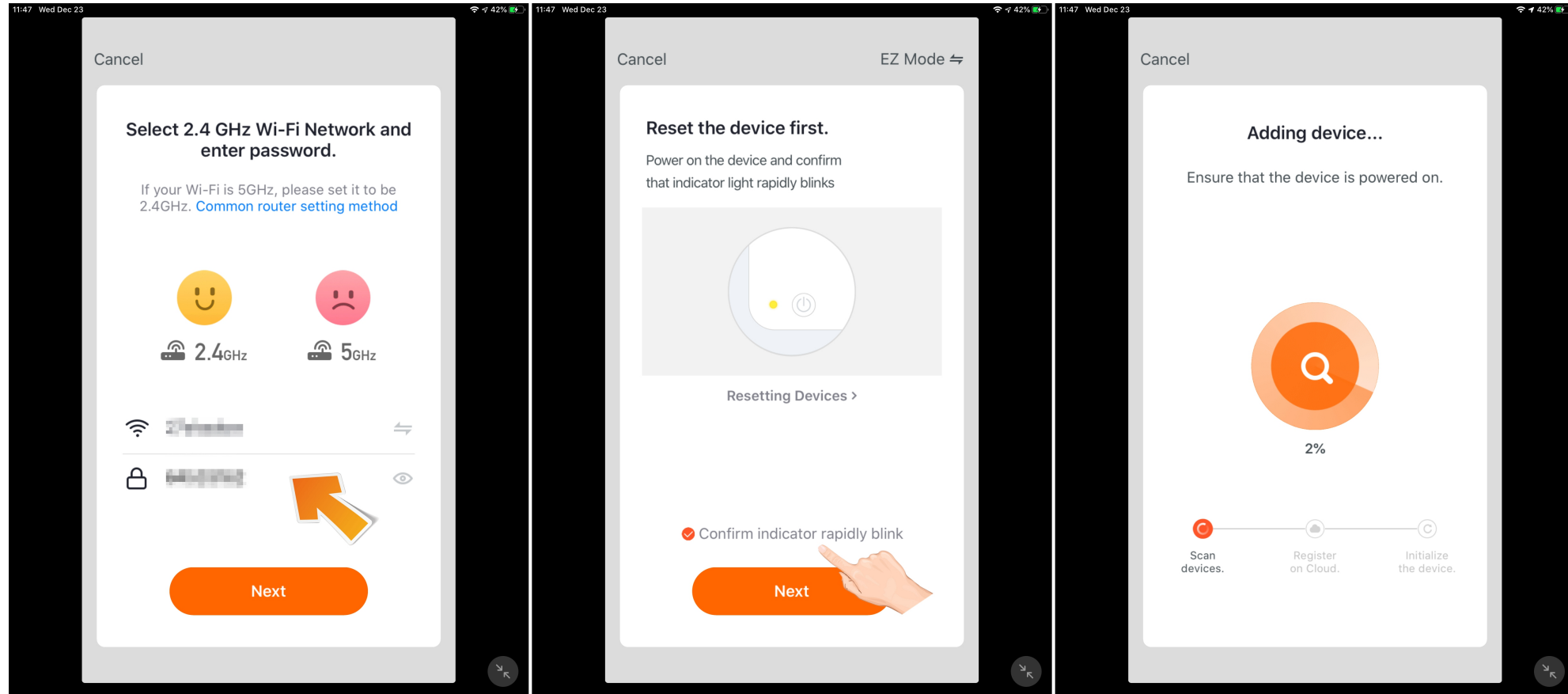
Make sure the power is connected to the fan before using. Plug the Fan into an AC 110V~50Hz mains outlet. Press and hold the power button for 5 seconds, Fan light flashing

-If the mobile phone is not connected to wi-fi, please click "Connect to Wi-fi" ;

-It will jump to the WLAN interface and connects Wi-Fi. Please note that only 2.4 GHz Wi-Fi network is supported;

-Enter WIFI password

-When the progress reaches 100%, connection completed, and click "Done";



At this time, the connected device will appear on the APP home page . Then you can click directly to the device interface

