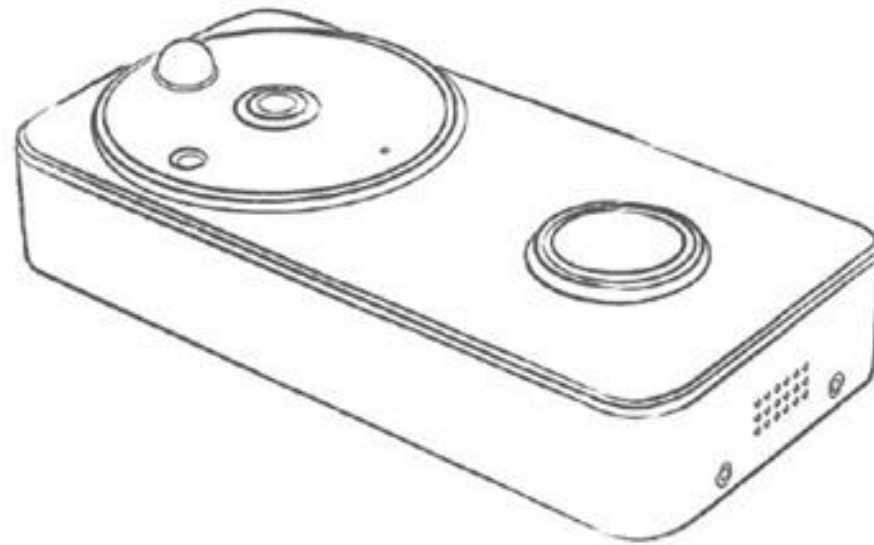


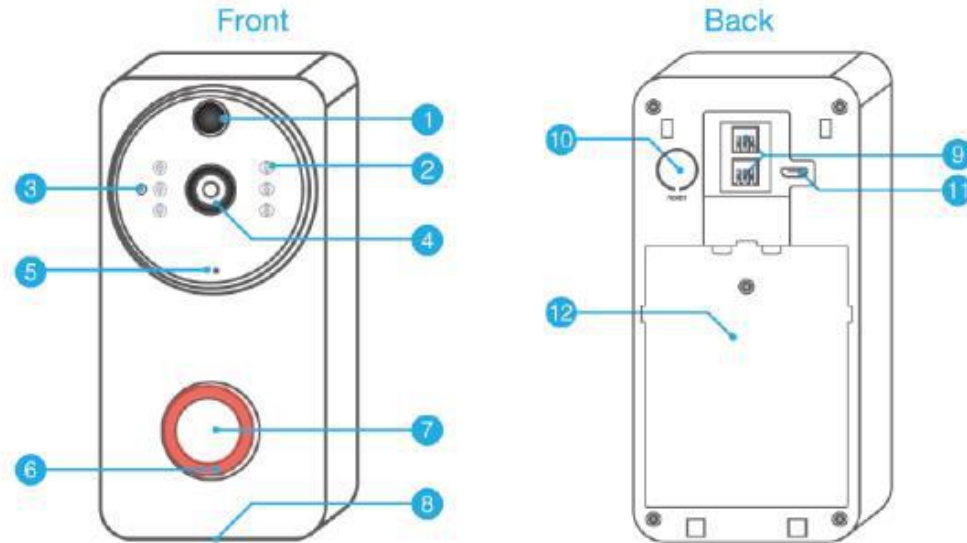


Overview



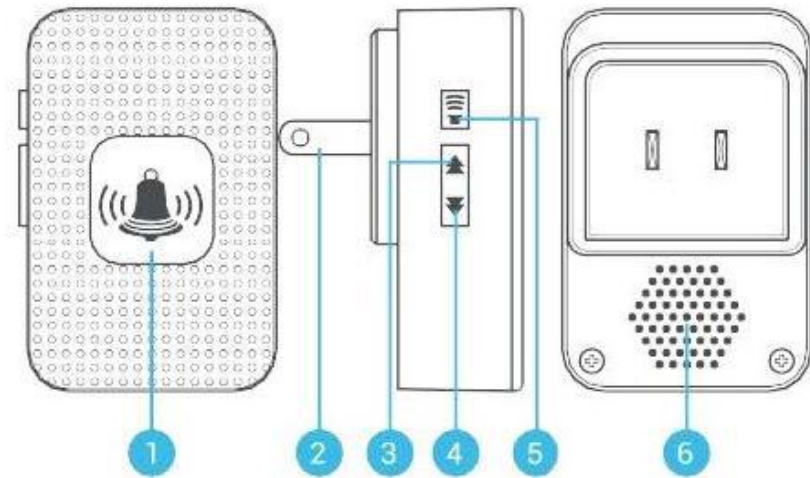
Overview

Doorbell



1	PIR Motion Sensor	5	Microphone	9	8V-24V AC Power Port
2	Infrared LED x 6	6	Indicator	10	Reset Button
3	Light Sensor	7	Push Button	11	Micro USB Port
4	166° HD Camera	8	Speaker	12	Battery compartment cover

Chime



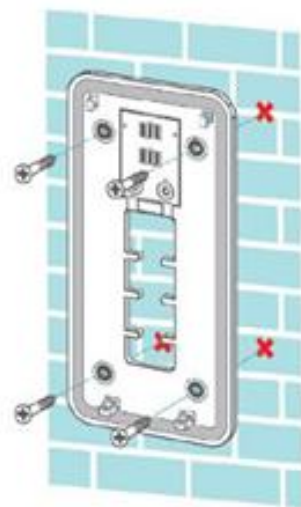
1.	LED Indicator	4.	Next Ringtone
2.	Power plug	5.	Volume Control Button
3.	Previous Ringtone	6.	Speakers

Chime Features

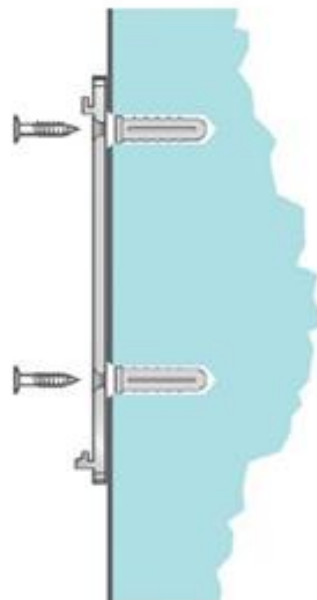
1. Plug & Play, easy to install and use.
2. Five Levels Volume Control, max volume: 110 decibels.
3. 40 Ringtones, with LED indicator.
4. 650ft/200m Wireless Working Range in Open Area.
5. No batteries, small in size, low power consumption.
6. Wireless connection with video doorbells
7. Supports "one-to-many" and "many-to-one" pairing.

Installation

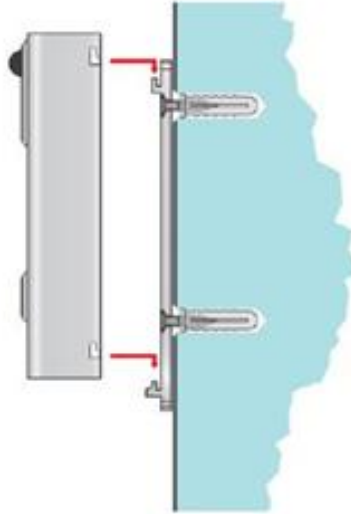
1. Positioning the mounting bracket.



2. Install the mounting bracket.



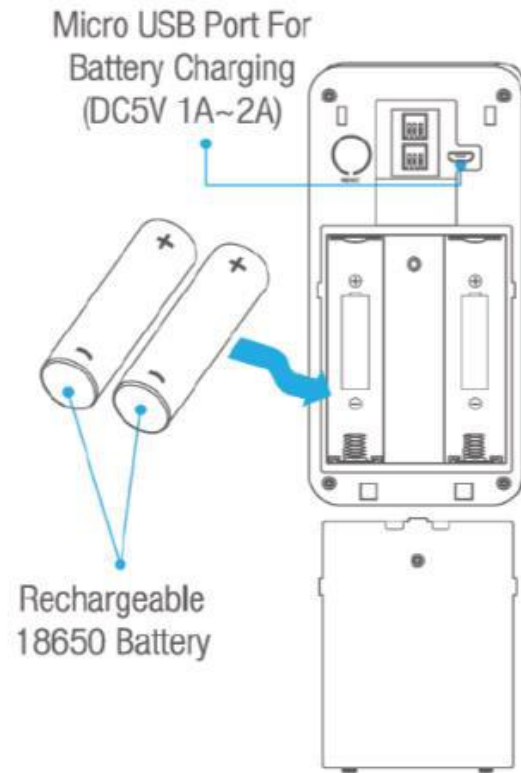
3. Place the device on the bracket.



4. Tighten the security screw.



Powered by Battery

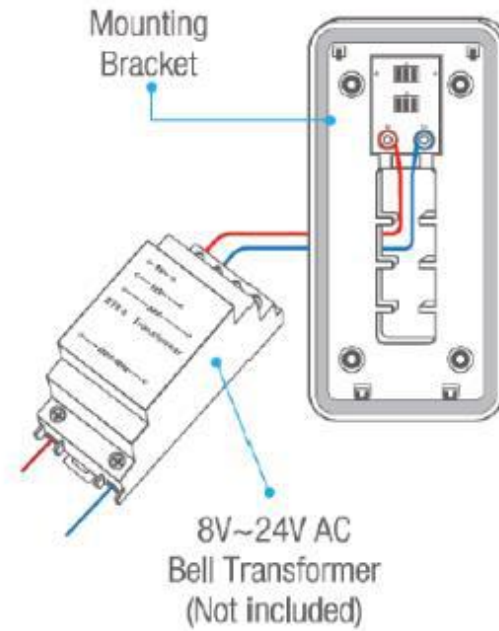


Warning:

- Please note the battery polarities. Insert the 2 batteries with positive sides upwards.
- Incorrect battery installation can damage the device and may cause a fire.

Powering the Doorbell

Hardwired Power



Notice:

Bell transformer is not included.

Please install under the direction of a professional.

Install Free App

Download APP: scan the QR code below to download and install. Register and login: open the "MySmarth" APP to register and login according to the prompts.



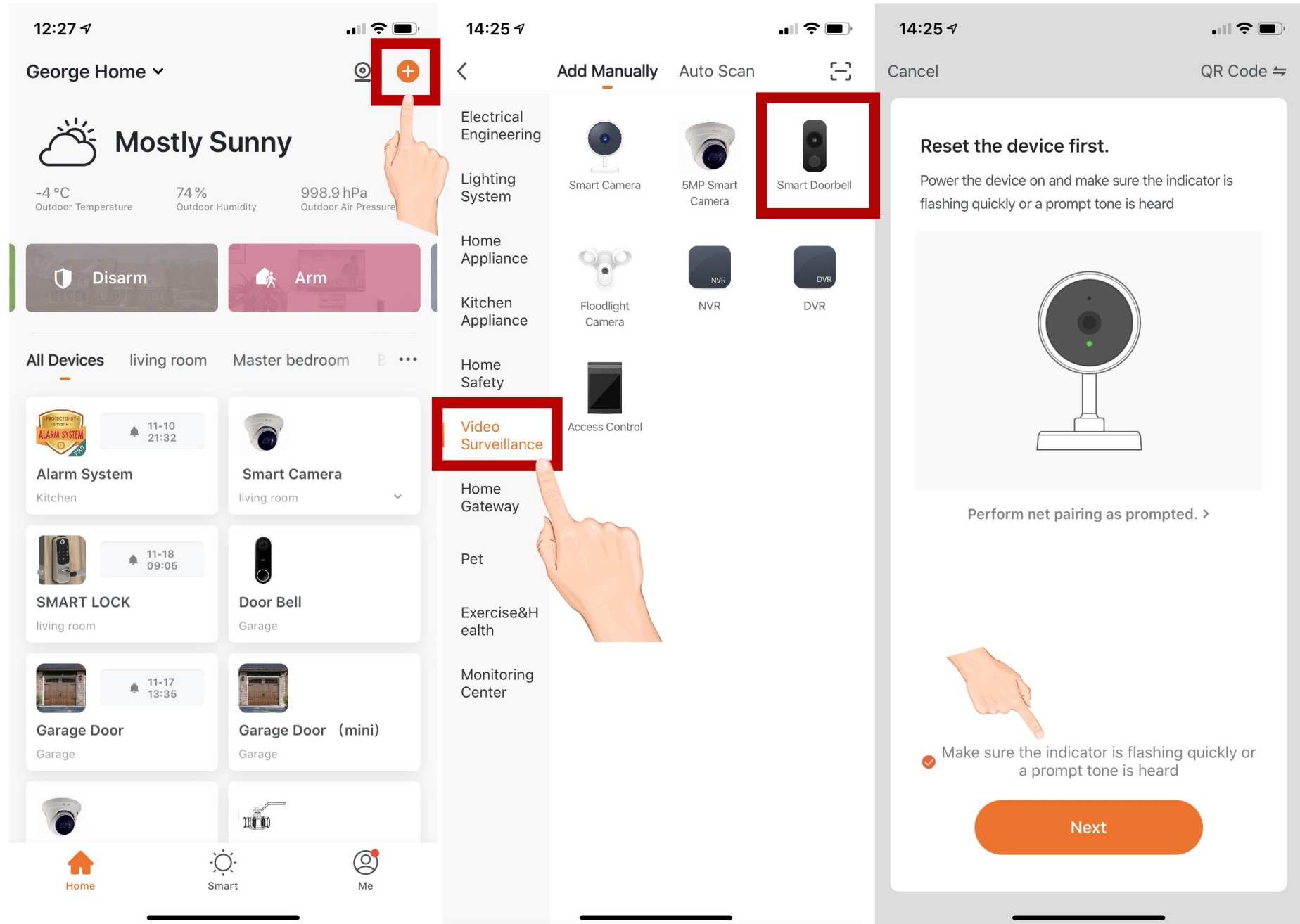
Add The Device -AutoScan mode

Make sure Wi-Fi is available and connected to the Internet.

-Connect the camera to the power, then system startup completed.

-Open "MySmarth" APP, press the '+' in the upper right corner of the main screen;

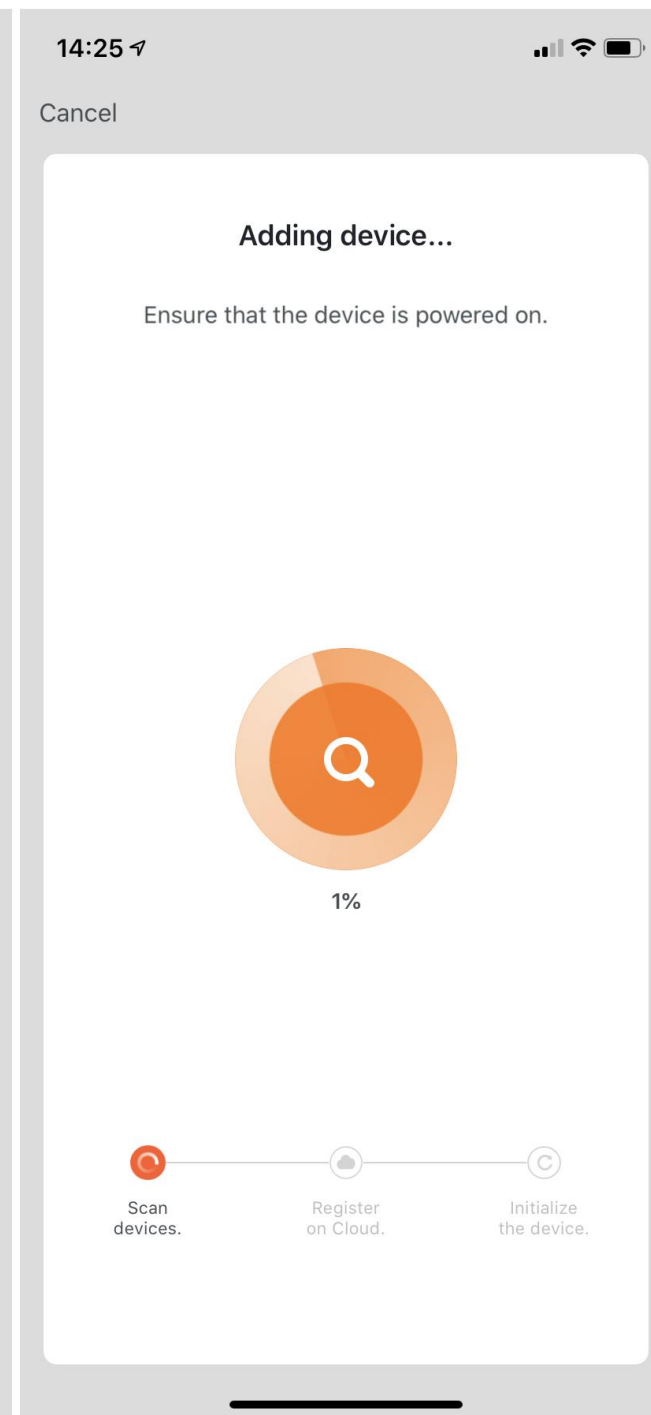
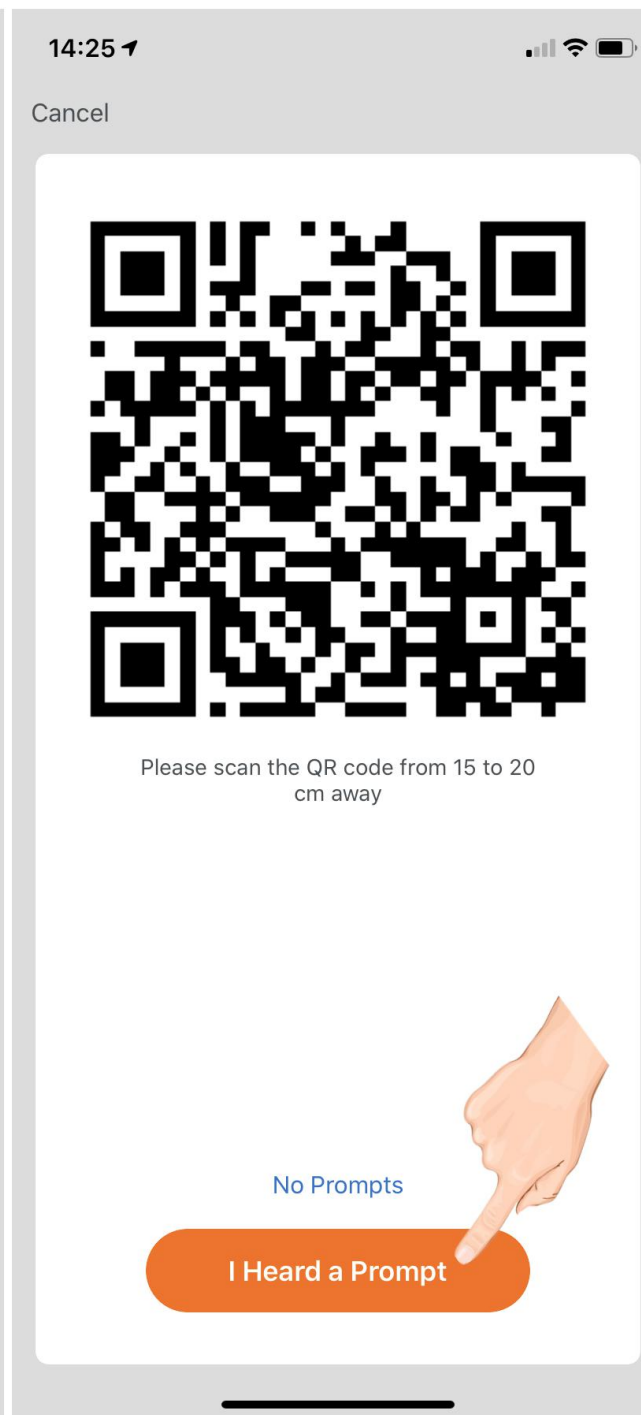
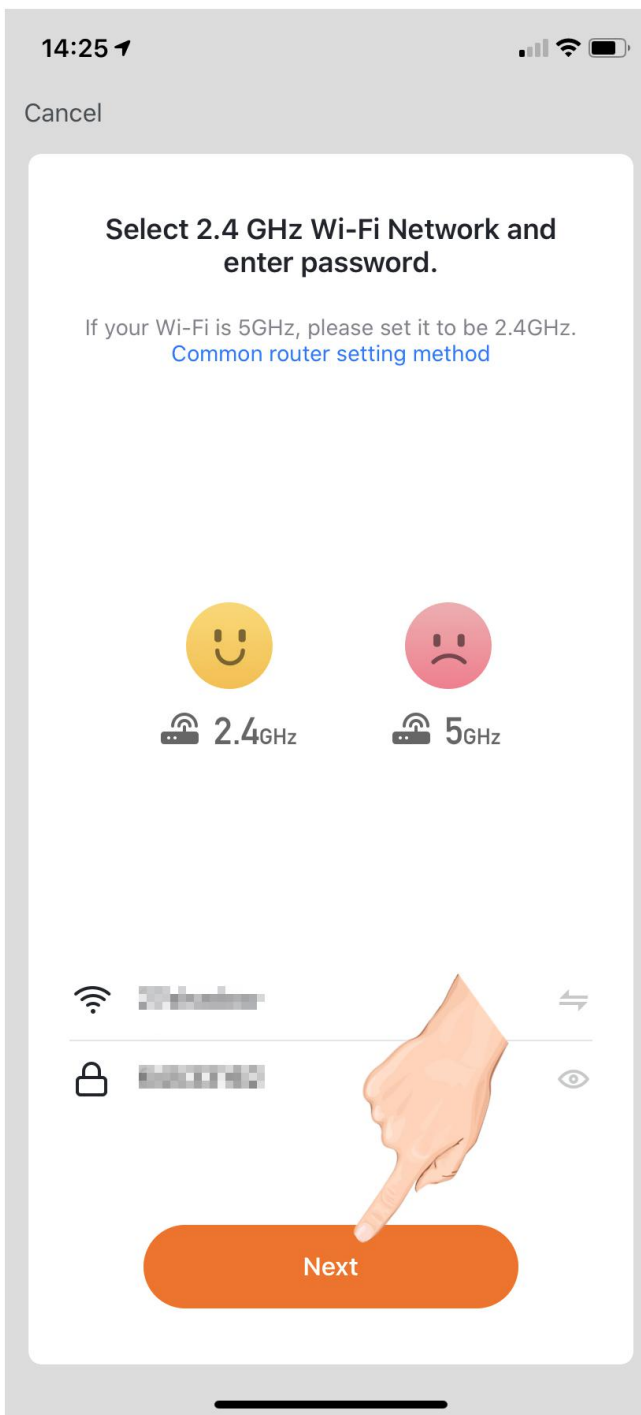
-choose "VideoSurveillance", click "Smart Doorbell" to add Doorbell; and then click "Next step";



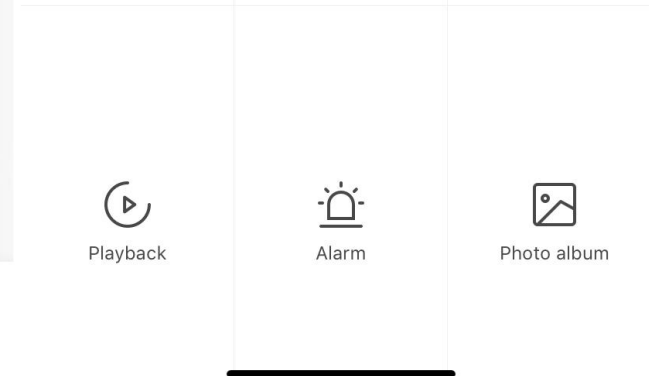
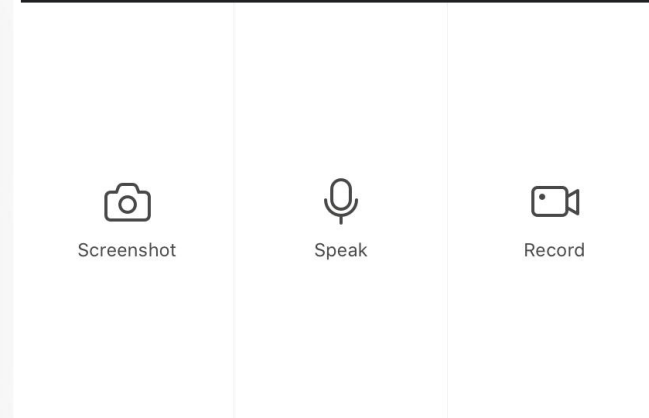
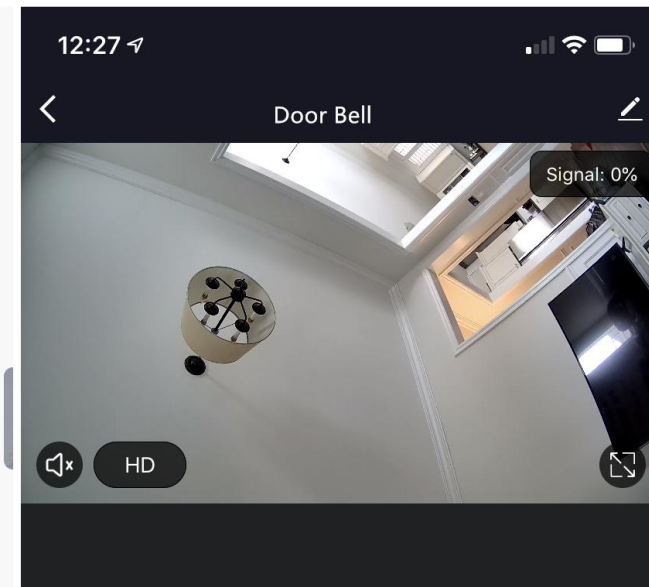
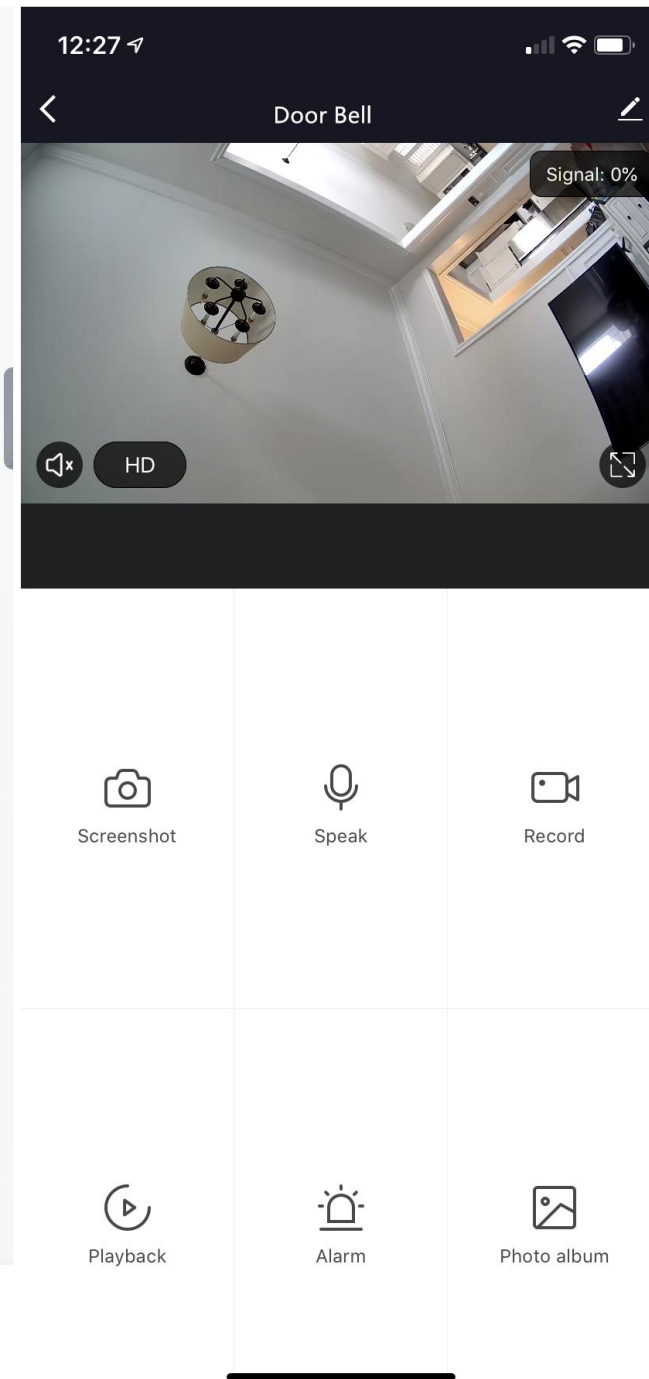
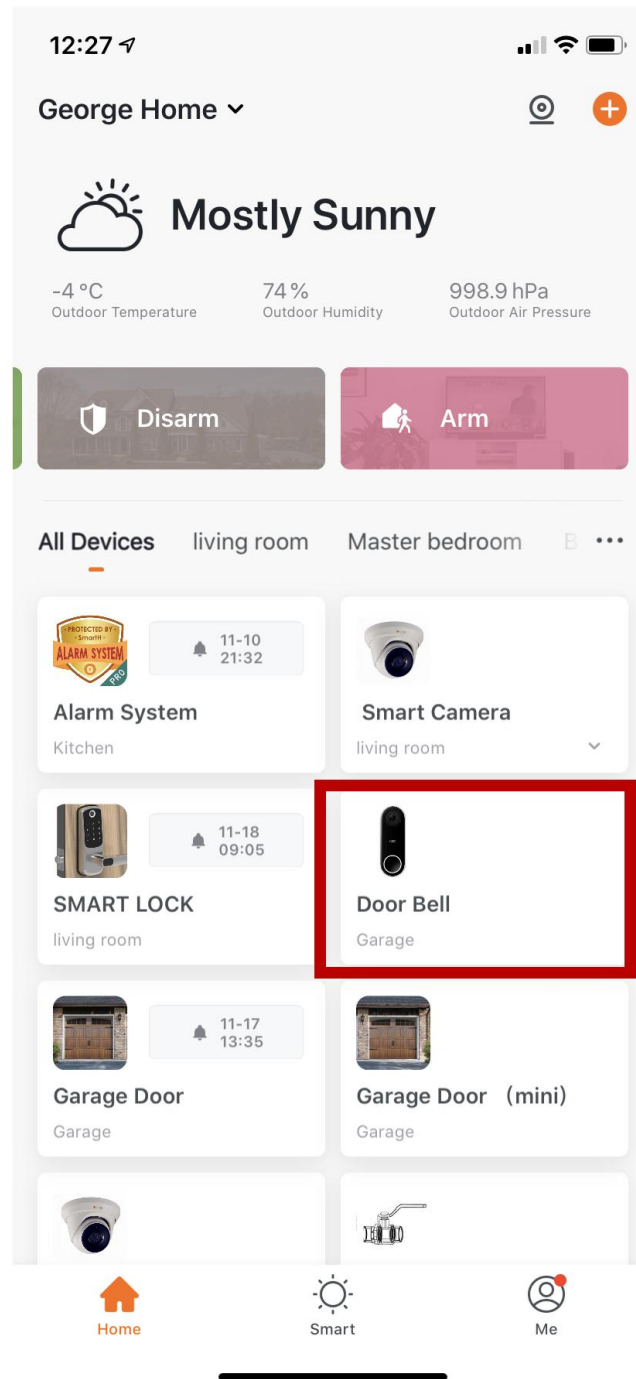
-If the mobile phone is not connected to wi-fi, please click "Connect to Wi-fi" ;

-It will jump to the WLAN interface and connects Wi-Fi. Please note that only 2.4 GHz Wi-Fi network is supported;

-If the phone is connected to Wi-Fi ; click "Confirm". It will jump to the interface to prompt to scan the QR code with camera and click "Continue" ; A QR code will prompt on your screen and you need to scan it with the Smart Camera, (the camera is about 20-30 cm away from the mobile phone lens). Then click "hear the prompt sound". "connecting" ;



At this time, the connected device will appear on the APP home page . Then you can click directly to the device interface to see the monitoring situation



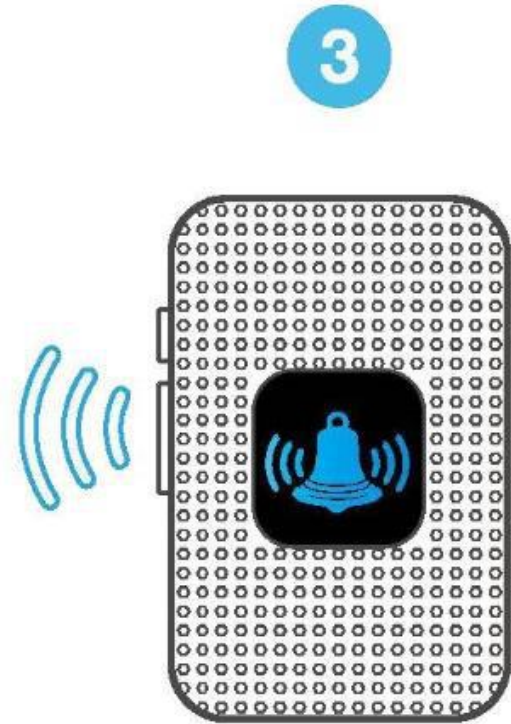
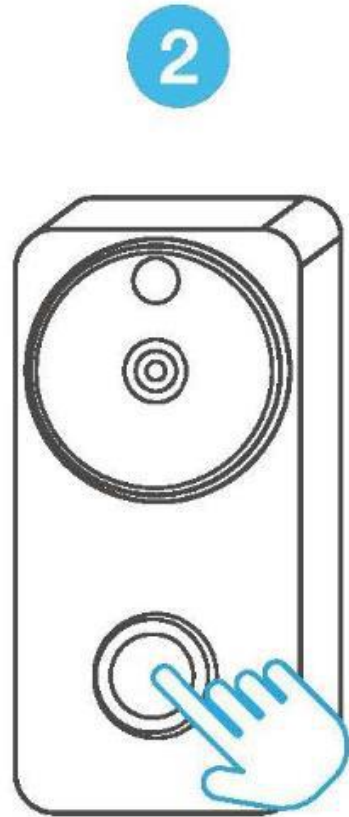
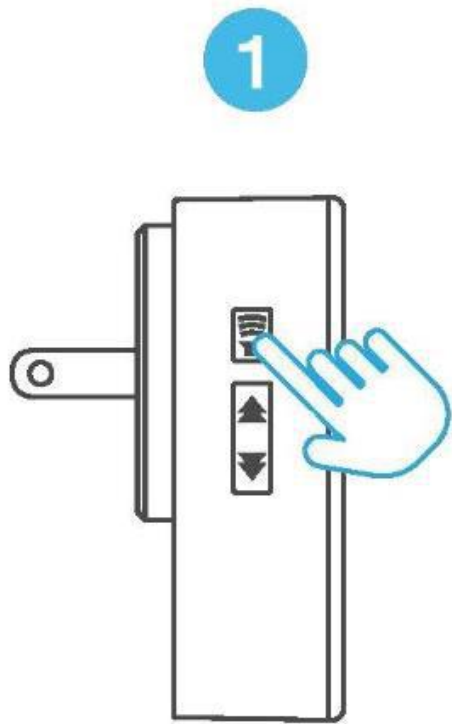
First Time Use

1. Plug the chime into an outlet. The default ringtone "Ding-dong" will be played at volume level 5, with the LED indicator blinking.
2. Short press on the volume control button to adjust the volume. Level 1: mute (only the indicator flashes). Level 2 ~ 5: the volume gradually increases.
3. Ringtone selection:
 1. Press on "previous/next" button to select a ringtone.
 2. Press and hold "volume control" for 5 seconds to use the selected ringtone.

Chime Pairing

1. First, select your favourite ringtone as mentioned previously, then press and hold the volume control button for 5 seconds until you hear a "ding" sound. The chime will be in pairing mode for 8 seconds.
2. Press the call button 1-2 times on a video doorbell nearby, and a "ding-ding" alert sound will be heard from the chime. This means pairing was successful.
3. Press the call button again on the video doorbell, and the indoor chime will alert with the selected ringtone, and the LED indicator blinking.

Note: The chimes and doorbells support "one-to-many" & "many-to-one" pairing.



Resetting the Connection

To reset, press & hold the next button for 5 seconds until you hear a “ding”.
The indoor chime will be restored to the factory default.