

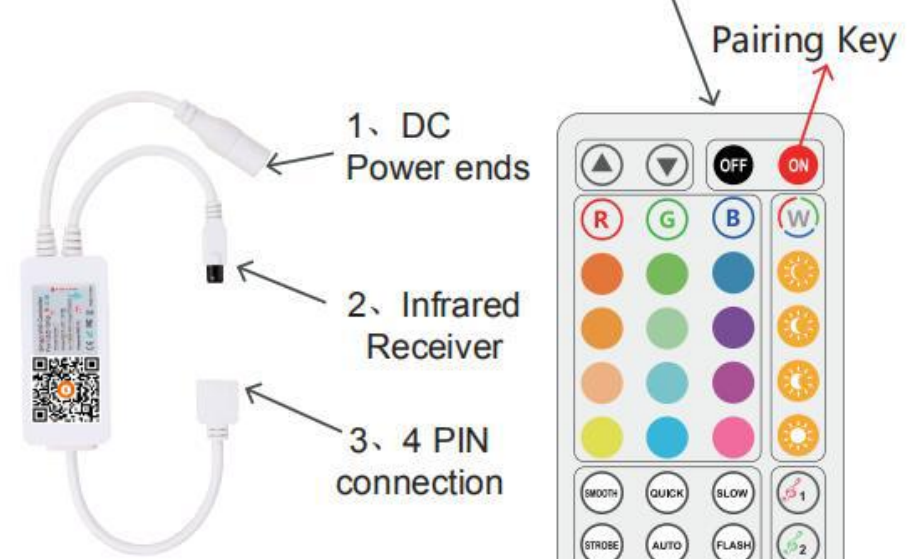
## User Manual for LED Controller RGB



### Specifications:

Product name	Smart Wi-fi controller for LED strip light
Model number	Spider T
Supported platform	Android、IOS
Material	ABS VO (Fireproof)
Remote Control info	Infrared, 40 Keys
Power Input	DC5-24V

### Product Introduction: 4、 Infrared sender



Smart WiFi Controller



5、 Insulation card  
40Keys remote controller

1. **DC Power end** – Please make sure the input power is DC 5-24V and the LED strip supported voltage matches with the DC power input, otherwise the whole LED strip system will be easy to damage.




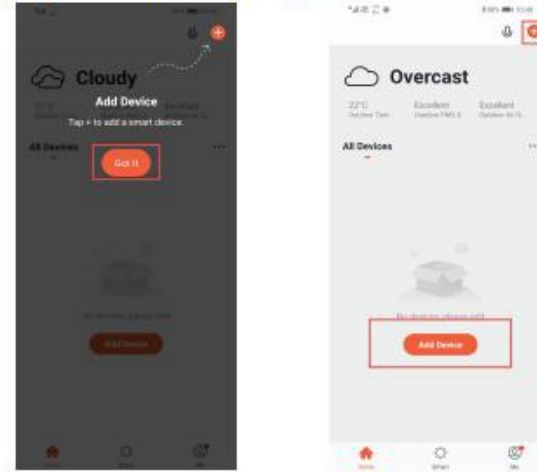
Control ways	Support Devices	Instruction
	Remote controller	Local use, controlled by Remote control. Battery included. Remove the plastic pill at the bottom before use.
	iPhone Android	Wi-Fi connection, controlled by smart phone. 1. Long press "ON" button on remote for 5 seconds, wait for LED strip blink. 2. Open MySmartH app, press "+" after account registered. 3. Choose a 2.4G Wi-Fi, input password. 4. Wi-Fi connection process done. Photo instruction after this table.
	Alexa Google Assistant	Voice commands, controlled by smart hubs. After above Wi-Fi connection finish, follow the instruction found in app "my" page. Including linkage method, supported voice commands.

Photo instruction for how to connect with Wi-Fi:  
Long press "ON" button on remote for 5 seconds, wait for LED strip blink.

1. Open App, click "+" or "add device", to add device.



2. Click Select Lighting, and then click Select Right strip Lights to enter the Add Device. Click "Next", and input Wi-Fi password. Select indicator status. Pay attention: only 2.4G Wi-Fi supported.

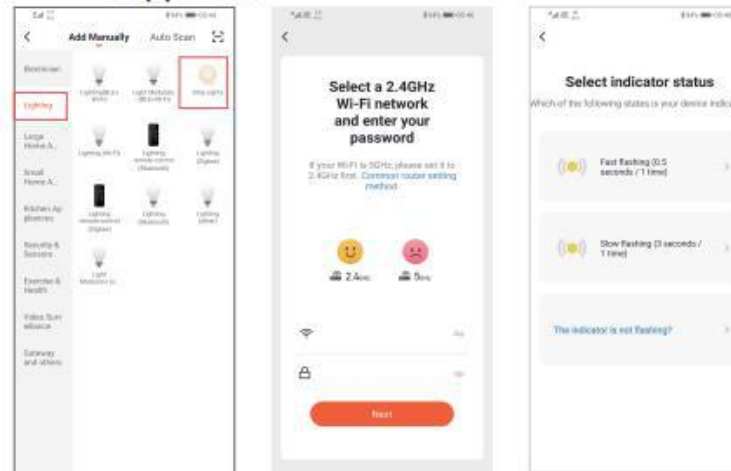
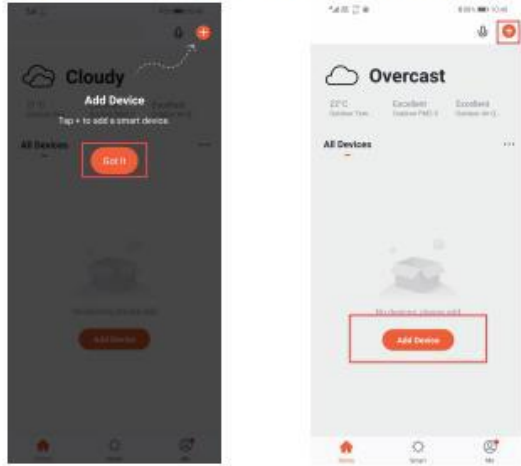
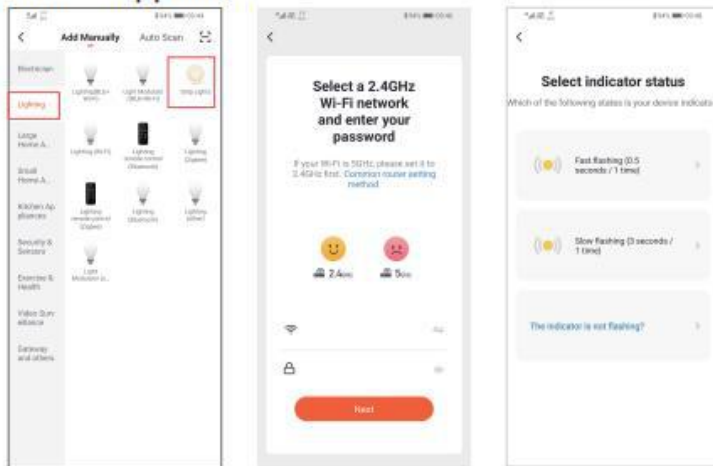


Photo instruction for how to connect with Wi-Fi:  
Long press "ON" button on remote for 5 seconds, wait for LED strip blink.

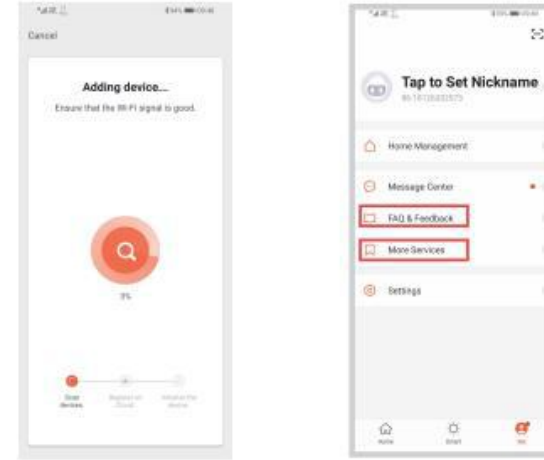
1. Open App, click "+" to "add device", to add device.



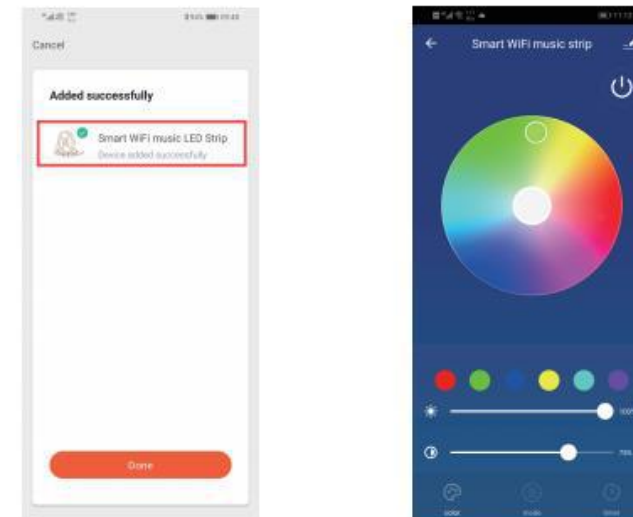
2. Click Select Lighting, and then click Select Right strip Lights to enter the Add Device. Click "Next", and input Wi-Fi password. Select indicator status. Pay attention: only 2.4G Wi-Fi supported.



3. Waiting for ten seconds, pairing succeed, name the device. If failed to pair, check more services or help center.

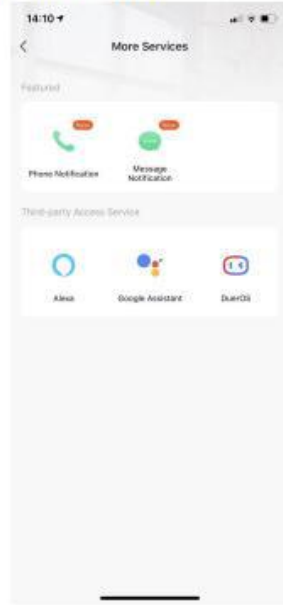


4. Finish pairing, device renaming control the light by smart phone panel.





5. Check the user manual for how to connect with Alexa / Google Assistant etc.



## Smart WIFI Music Remote

▲ ▼ Brightness dimming or adjust MIC sensitivity

OFF ON Pause On/Off

W Red, green and blue mixed into white

☀ 25% White light

☀ 50% White light

☀ 75% White light

☀ 100% White light

SMOOTH Smooth change

QUICK Speed up color changing

SLOW Slow up color changing

STROBE Strobe change

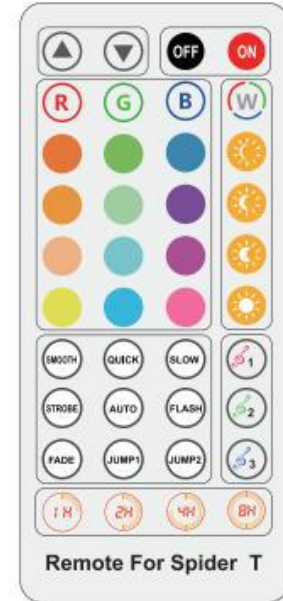
AUTO Automatically change colors and models

FLASH Flash change

FADE Gradual change

JUMP1 Jump1 change

JUMP2 Jump2 change



15 Steady color



Timing on/off setting

1 Soft music mode

2 Classic music mode

3 Rock music mode