

# Smart Network Rebooter

---

# Specifications

Product Name:	Smart Network Rebooter
Model Number:	SH-NR2.1
Style:	Surge Protector
Power Source :	AC 15A
Voltage:	125 Volts
Wattage:	1875 Watts
Surg Protection LED indicator:	Support
Grounded LED indicator :	Support
Colour:	Black
Communication Frequency:	Wifi & Bluetooth
Wireless Standard:	IEEE802.11 b/g/n
USB Output:	5V 2.1A
Indoor:	Indoor On
Working Humidity:	Up to 95%RH

## Install Free App

Download APP: scan the QR code below to download and install.  
Register and login: open the "MySmarth" APP to register and login according to the prompts.



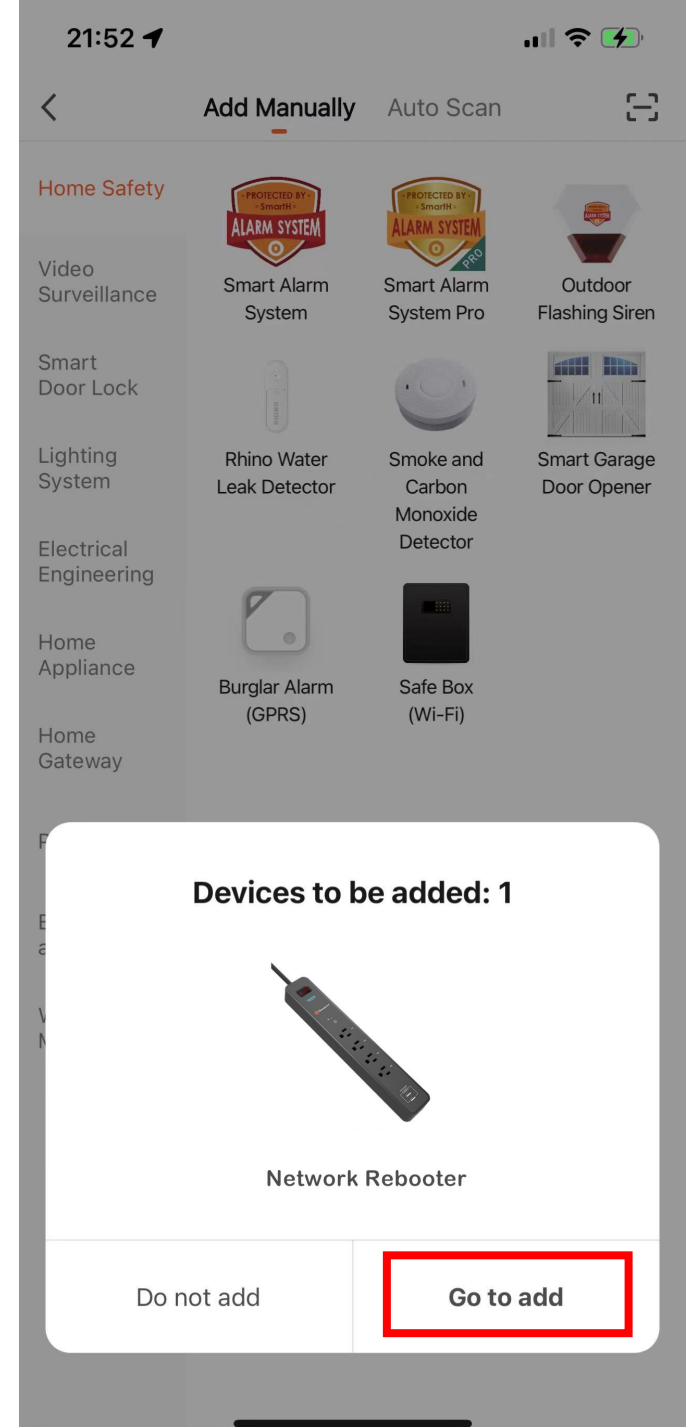
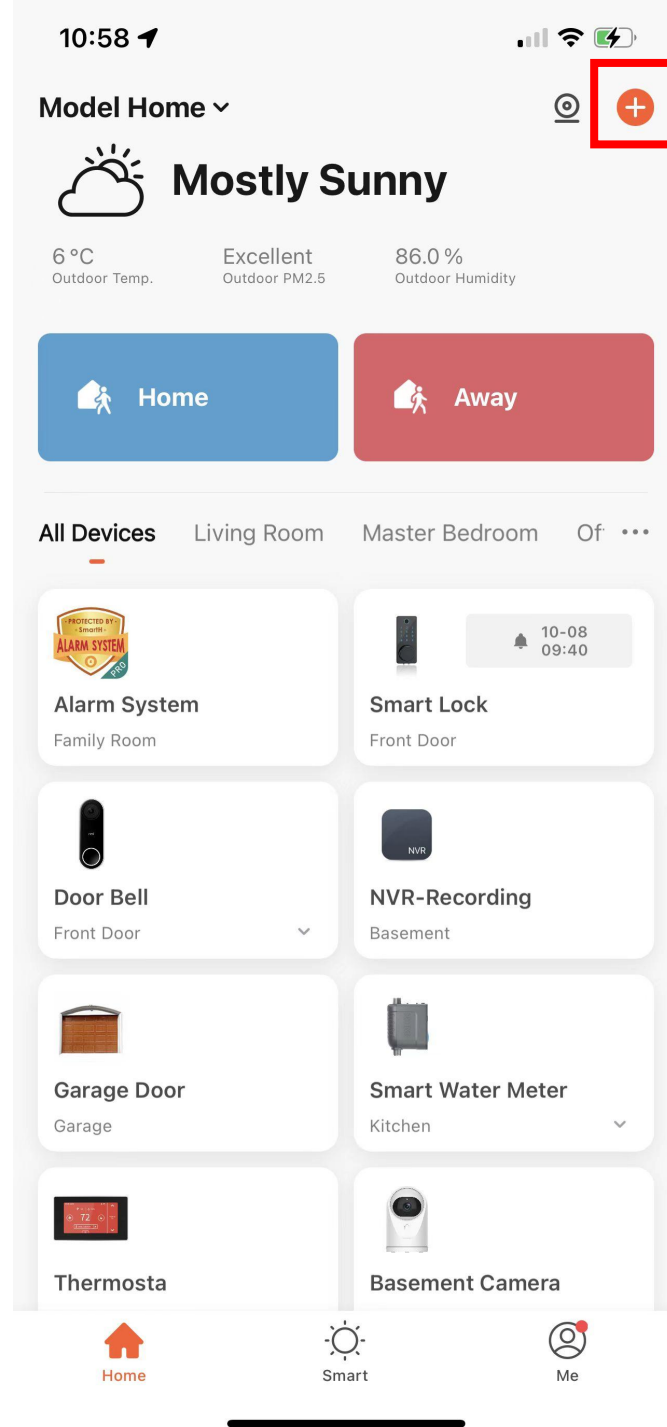
## Add The Device -AutoScan mode

-Device power up.

-Make sure Wi-Fi is available and connected to the Internet.

-Make sure that the phone's Bluetooth is turned on.

-Open "MySmarth" APP, press the '+' in the upper right corner of the main screen;



Confirm the WIFI user name  
and password, and then press  
"Next".

21:53

Cancel

Choose Wi-Fi and enter password

27777777

8 8 8 8 8 8 8

Next

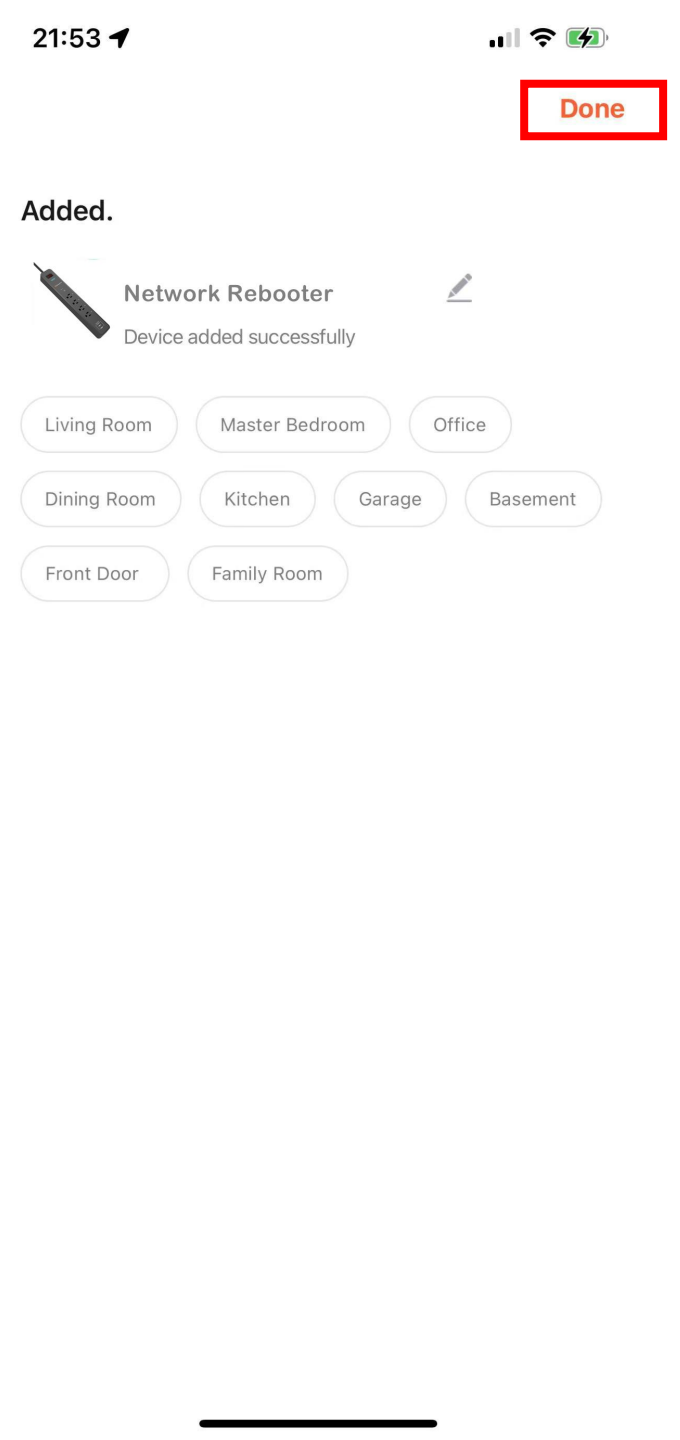
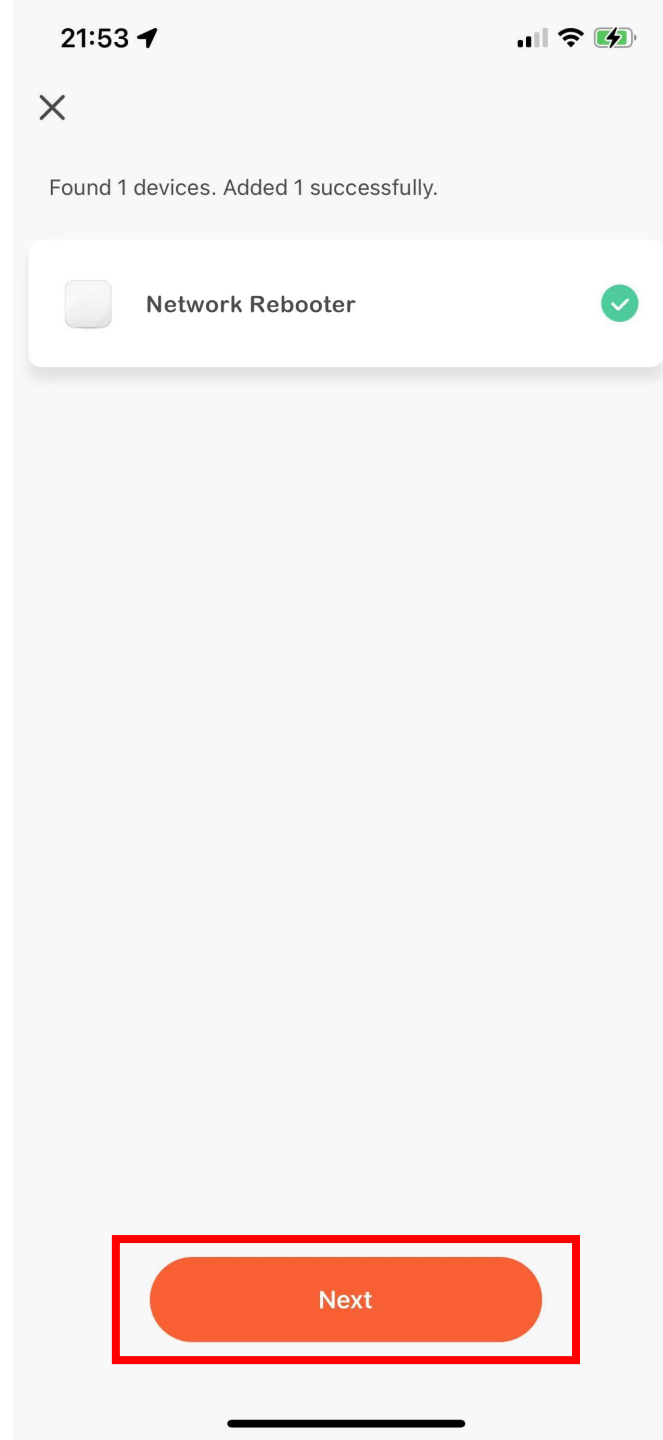
21:53

×

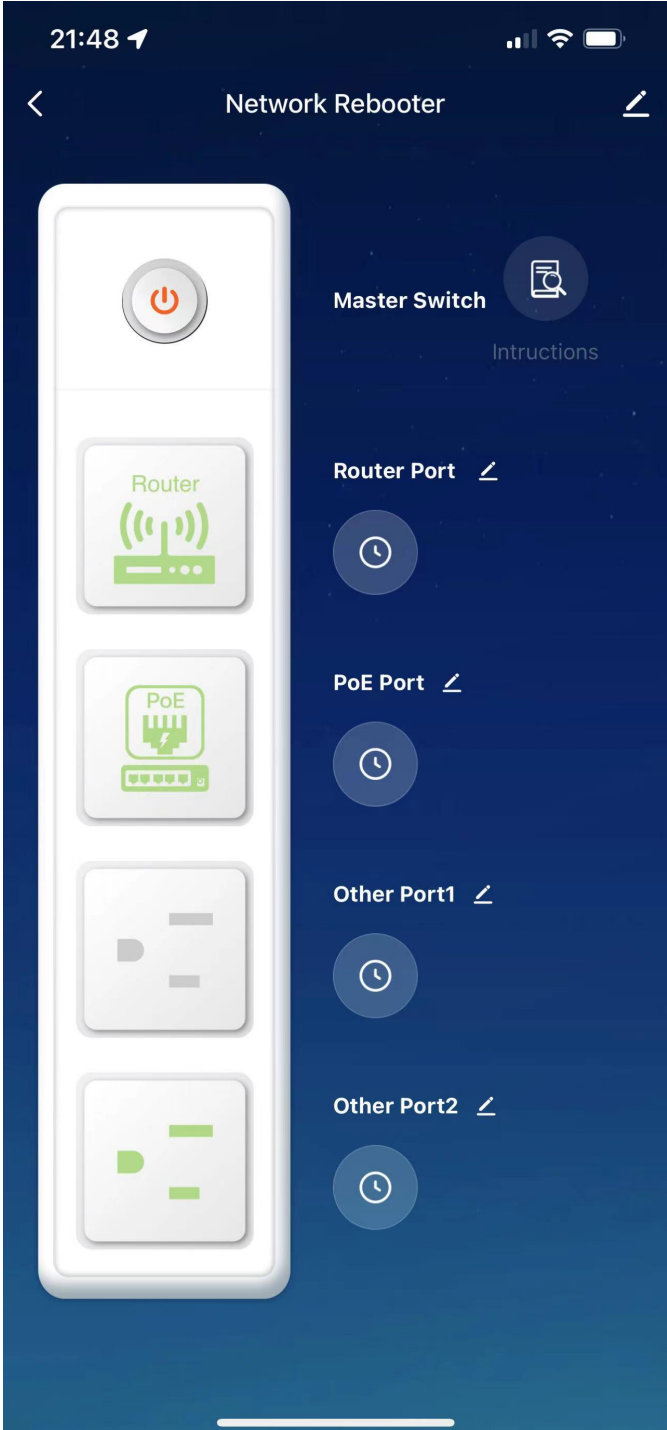
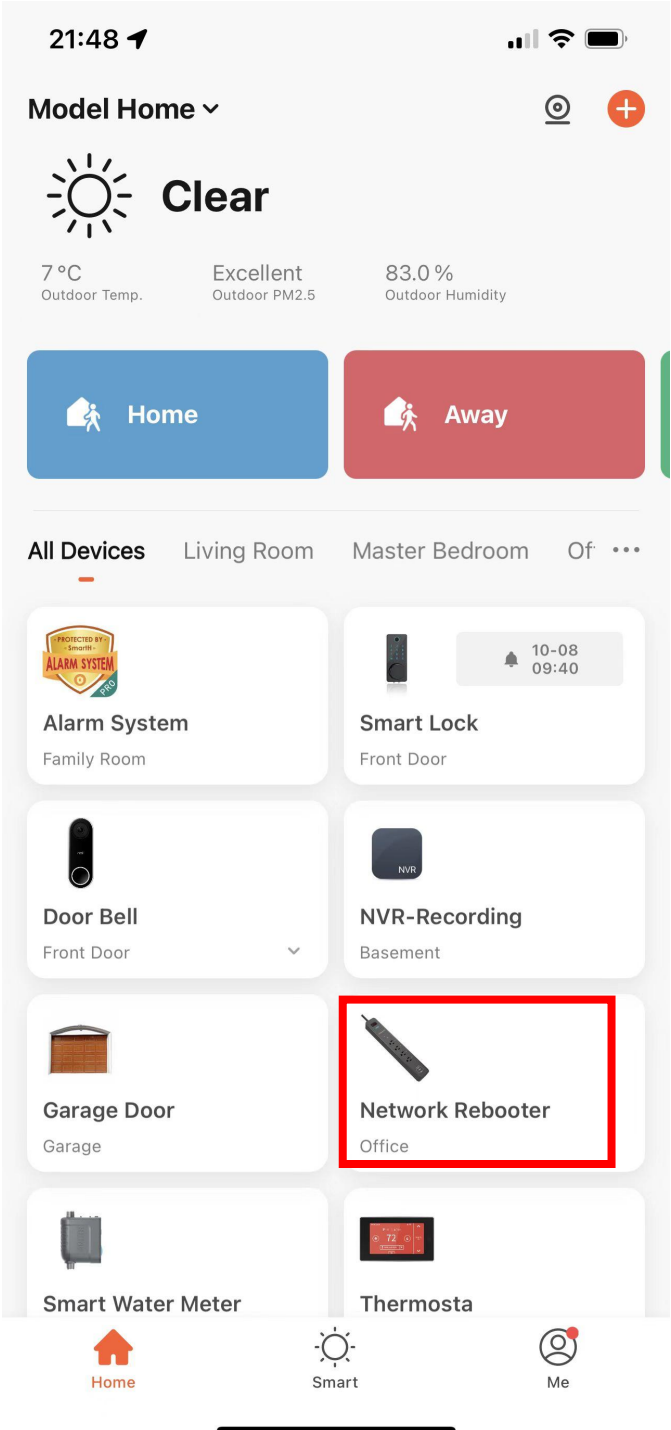
Found 1 devices. Added 0 successfully.

Network Rebooter

When the progress reaches 100%,connection completed,and click "Next".



At this time, the connected device will appear on the APP home page.



Long press for three seconds to restart the power port.

### Applicable Devices:

Routers / Monitoring devices / Wireless AP / PoE switch

### Instructions

All 4 ports have (remotely) reboot function. When any Port is in the ON (power supply) state, Press and Hold for 3 seconds. After the Pop-Up box confirms this operation, the port will immediately perform the Shutdown (power off) operation, After 3 minutes, the port will return to the ON(power supply) state by itself.

