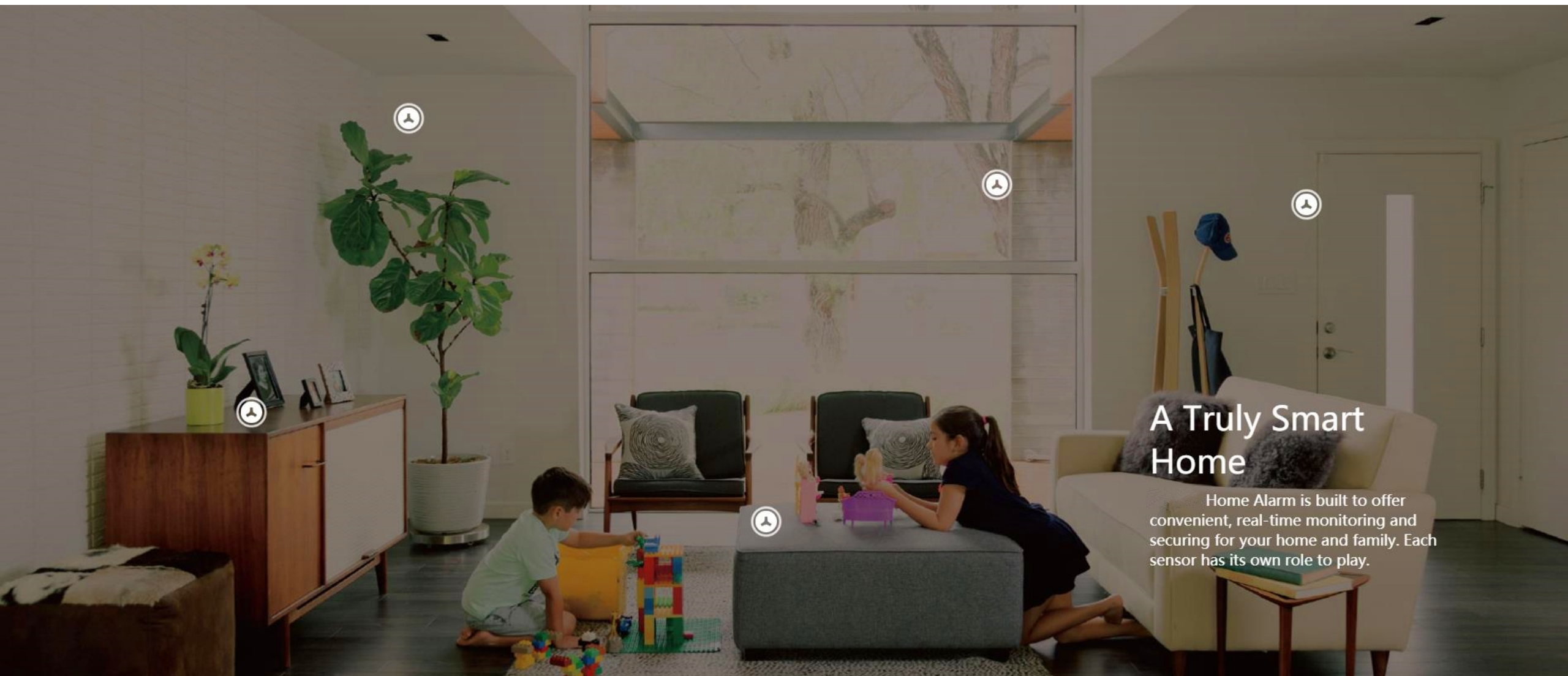


Smart Alarm System

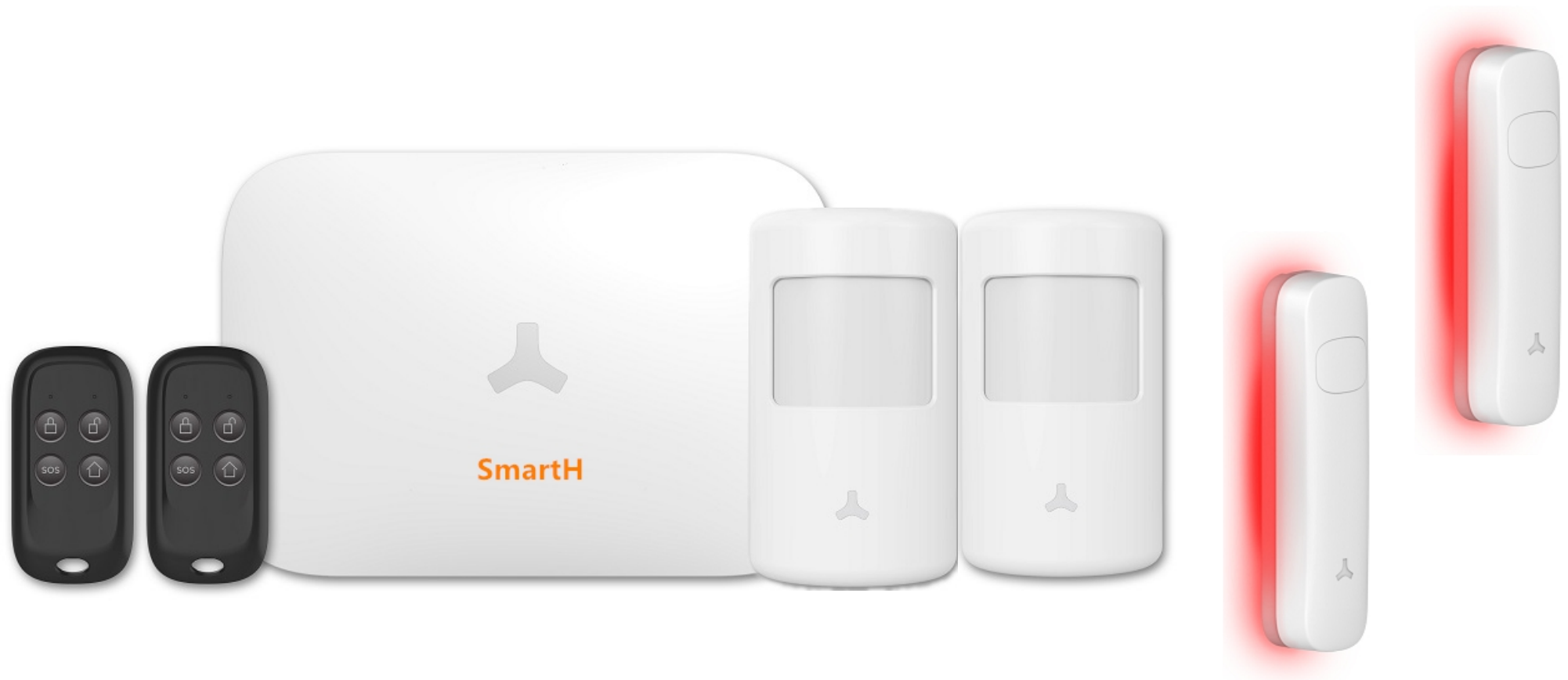
User Manual





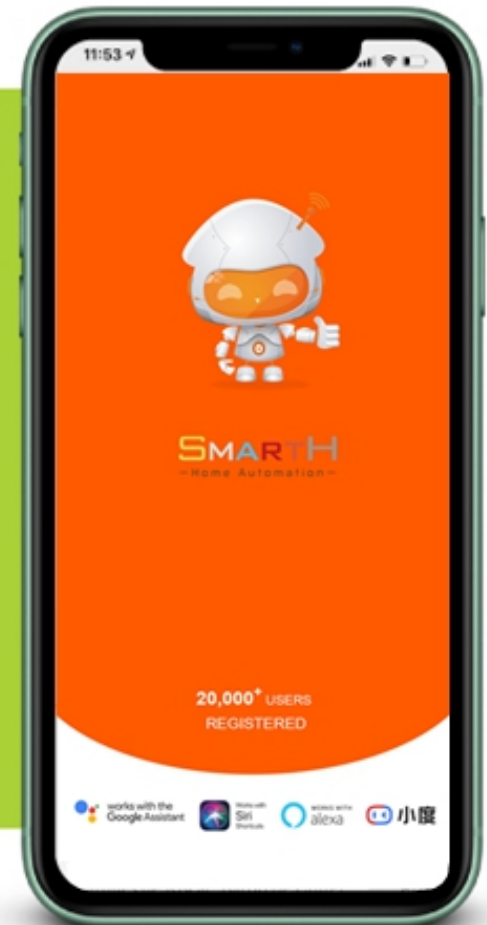
A Truly Smart Home

Home Alarm is built to offer convenient, real-time monitoring and securing for your home and family. Each sensor has its own role to play.



Install Free App

Download APP: scan the QR code below to download and install. Register and login: open the "MySmarth" APP to register and login according to the prompts.

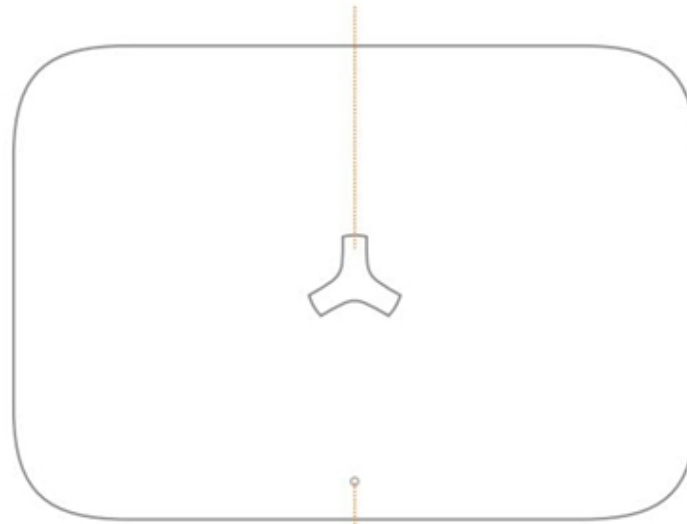


Quick Start Guide

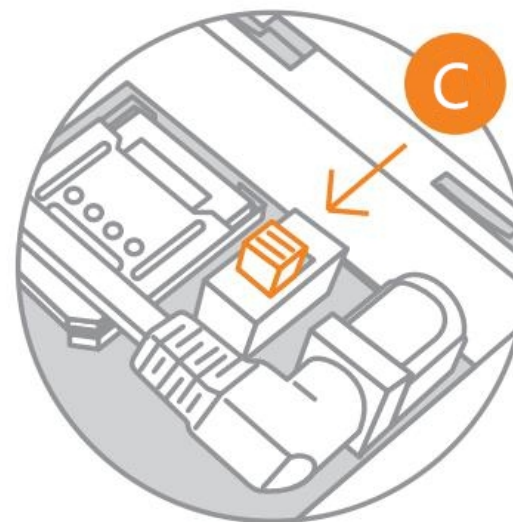
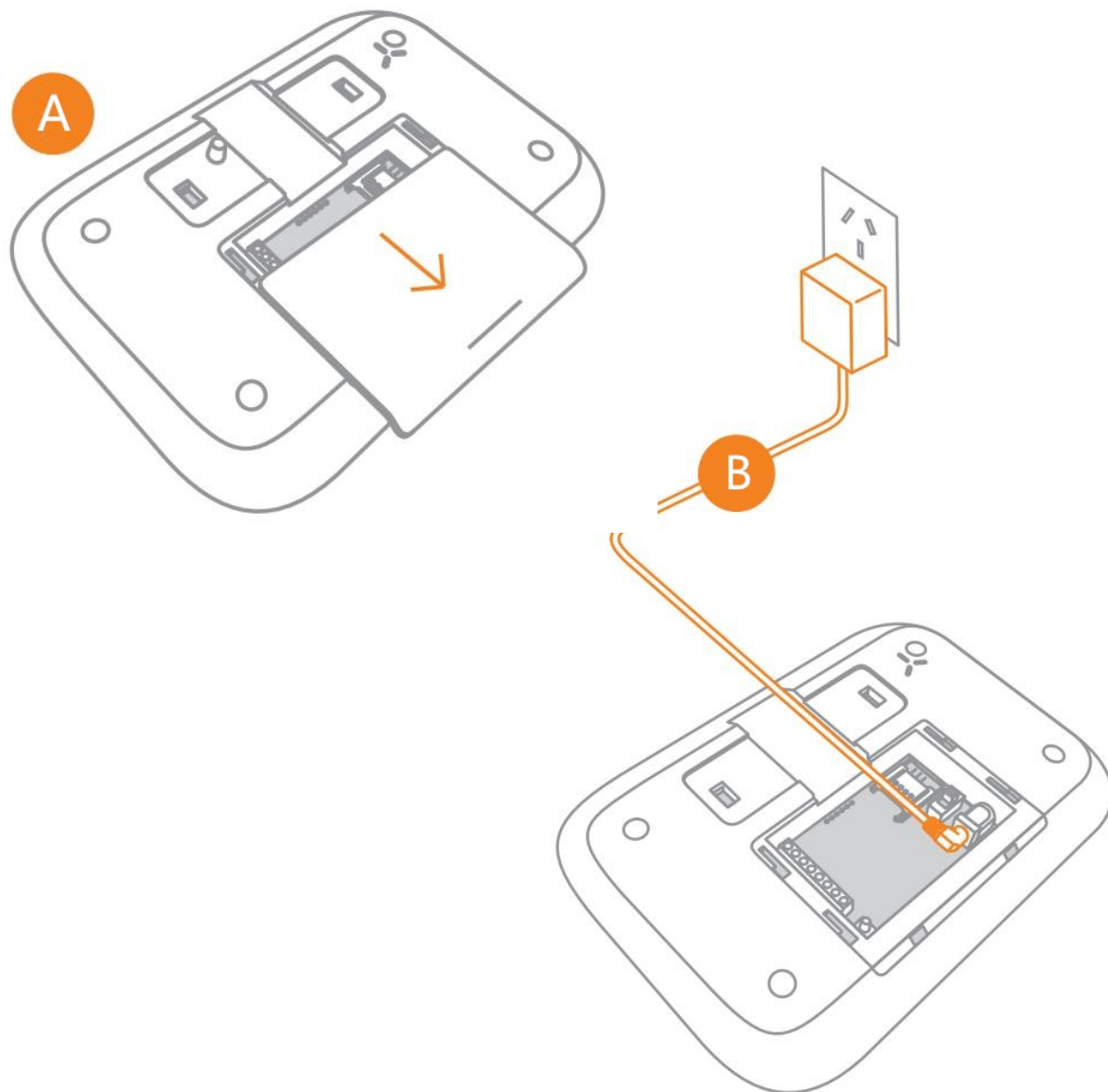


Working Status of Control Panel Appearance

White LED: Arming / Disarming
Red LED: Control Panel Status



Green LED: AC Power

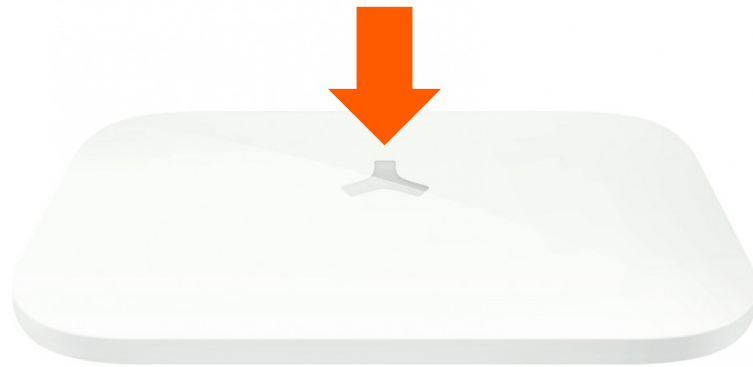


A. Gently open the battery bay cover.

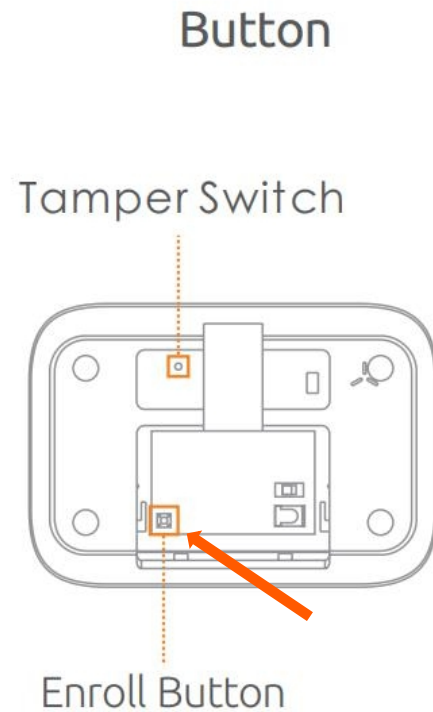
B. Insert power adapter's barrel plug to adapter socket.

c. Slide the power switch to ON position.

Red signal light flashing



**Please skip this page if the
red light is flashing**



Tamper Switch

Press once: Trigger tamper alarm

Enroll Button:

Press once: start accessory enrolling

**Press and hold for 5 seconds until one
beep heard:** start setup with app

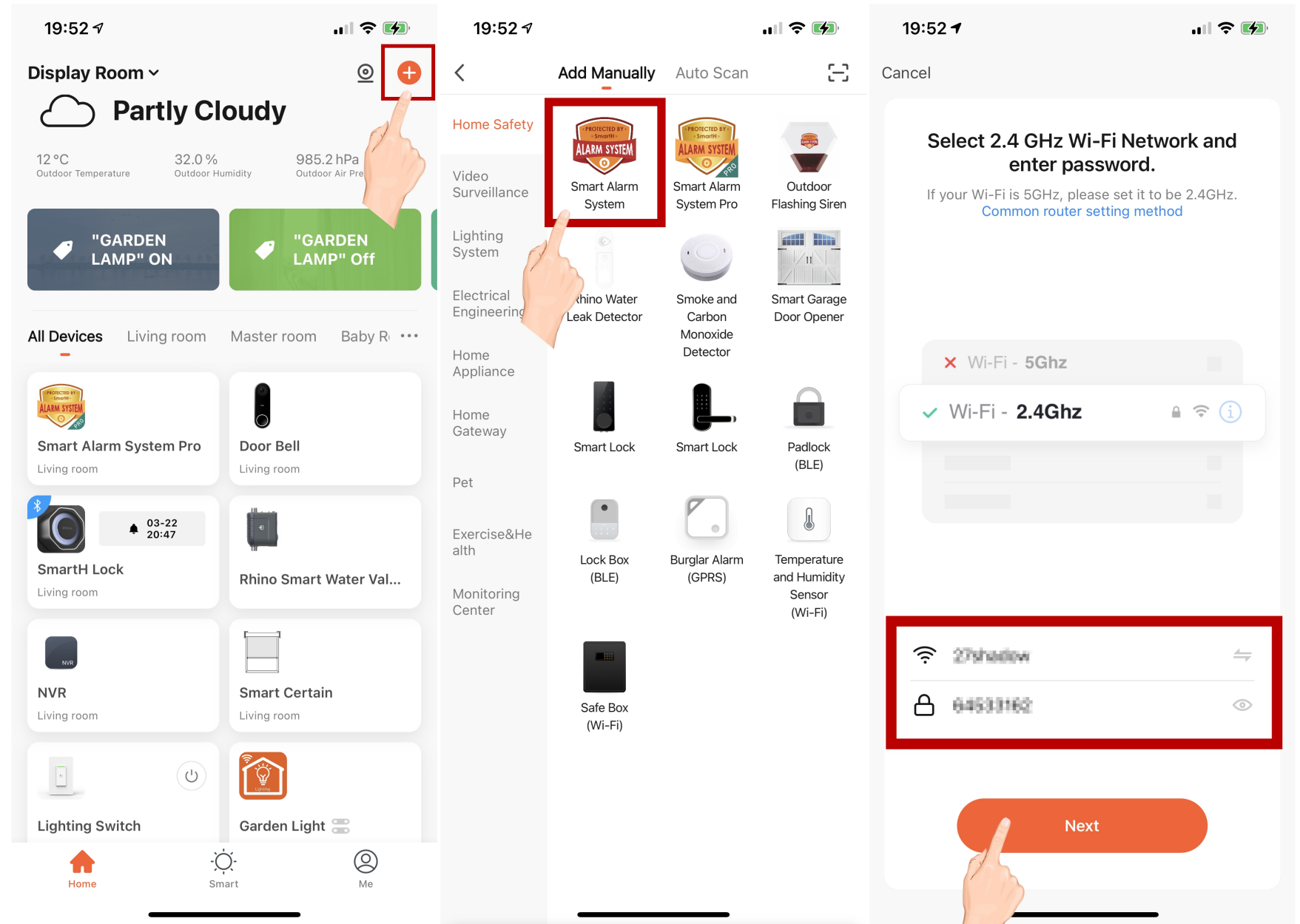
Add The Device -Manually mode

Make sure Wi-Fi is available and connected to the Internet.

-Open "MySmarH" APP, press the '+' in the upper right corner of the main screen;

-Choose "Home Safety", click "Smart Alarm System" to add ;

-Enter the WiFi username and WiFi password, and then click "Next step";



When the progress reaches 100%,connection completed, and click "Done";

