



Smart Garage door Opener

-User Manual-





Specification:

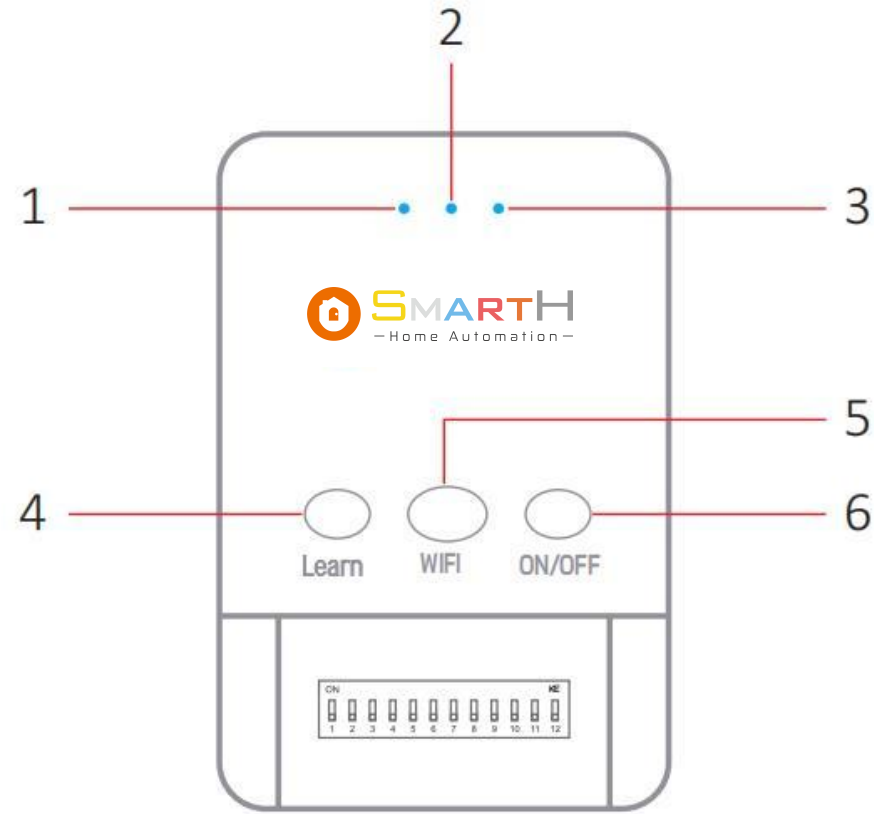
Product Name	Smart Garage Door Opener
Power Input	5Vdc 1A via USB port
Working Temperature	-10℃ to 55℃
Working Humidity	10%-90%(No condensation)
Wireless Technology	WI-FI 802.11 b/g/n
Dimension	87*57*18mm
Net Weight	140g

Packing List:

- Smart Garage Door Opener * 1
- Magnetic Switch * 1
- USB Power Cable * 1
- 5V d.c. USB Power Adaptor* 1
- 3M Sticker * 1
- User Manual * 1



LED and Button Rules



1: Program Led

2: Power Led

3: WIFI Status Led

4: Program Button

5: WI-FI Button

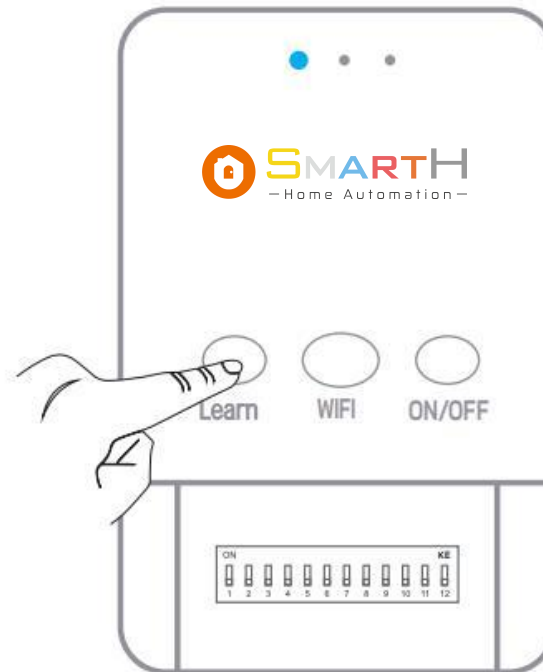
6: ON/OFF Button



Configuration Guide:

For Learn button ONLY

1. Start with your garage door, villa door, or commercial door closed.
2. Connect your smart garage door opener to power supply. Press and hold the program button Learn until the Program Led lights solid blue to entering to configuration mode. This mode will last 1 min.

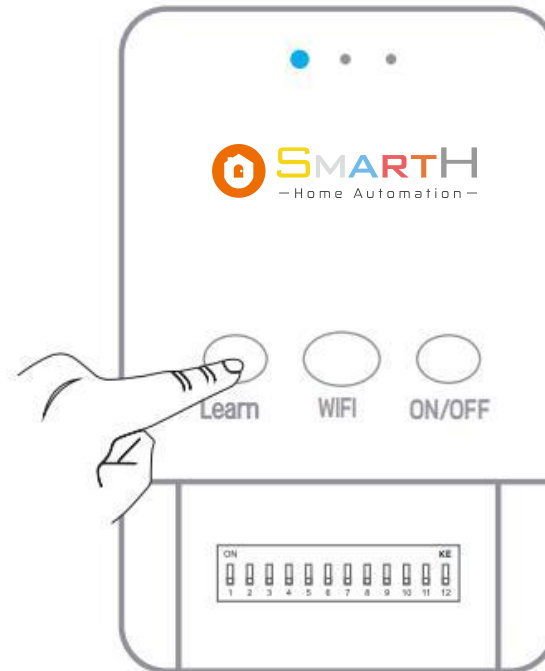




Configuration Guide:

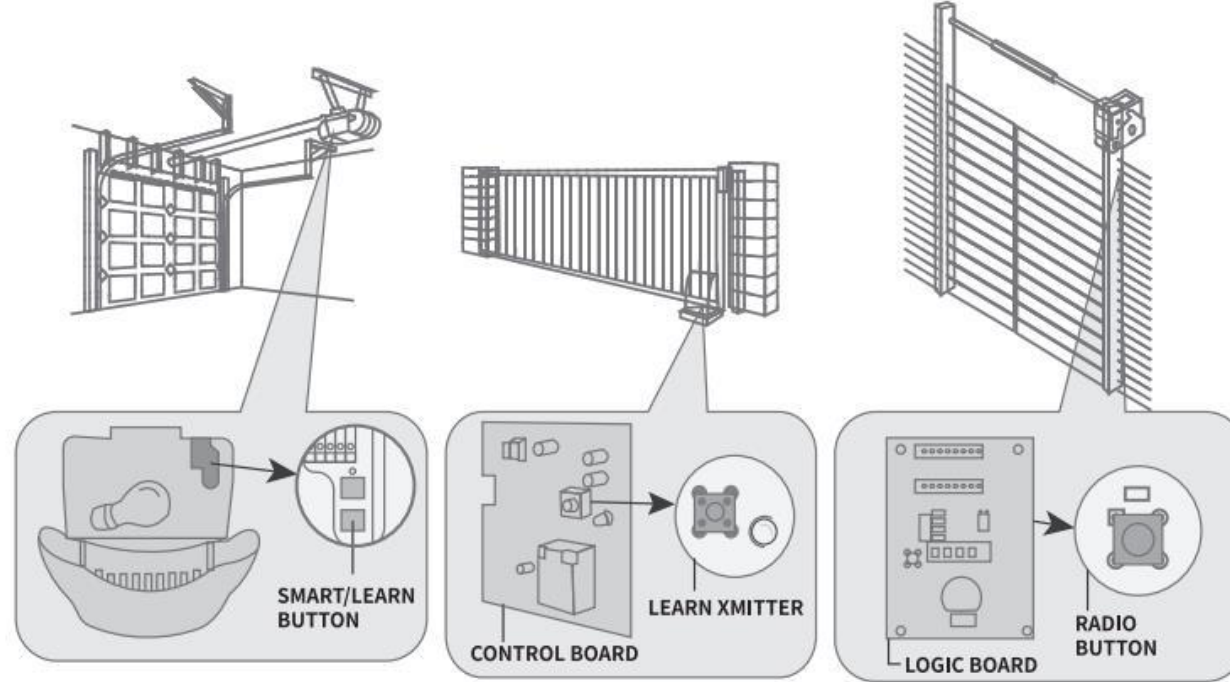
For Learn button ONLY

1. Start with your garage door, villa door, or commercial door closed.
2. Connect your smart garage door opener to power supply. Press and hold the program button Learn until the Program Led lights solid blue to entering to configuration mode. This mode will last 1 min.





3. Press the SMART/LEARN button on your existing door opener within that 1 min.



4. Press the ON/OFF button and the Program Led will flash. When the Program Led stops flash, you can then press that button next time, repeat this process multiple times until a click is heard from the garage door opener, or the bulb on the garage door opener blinks, or the garage door opens/closes, or a beep is heard from the door operator.



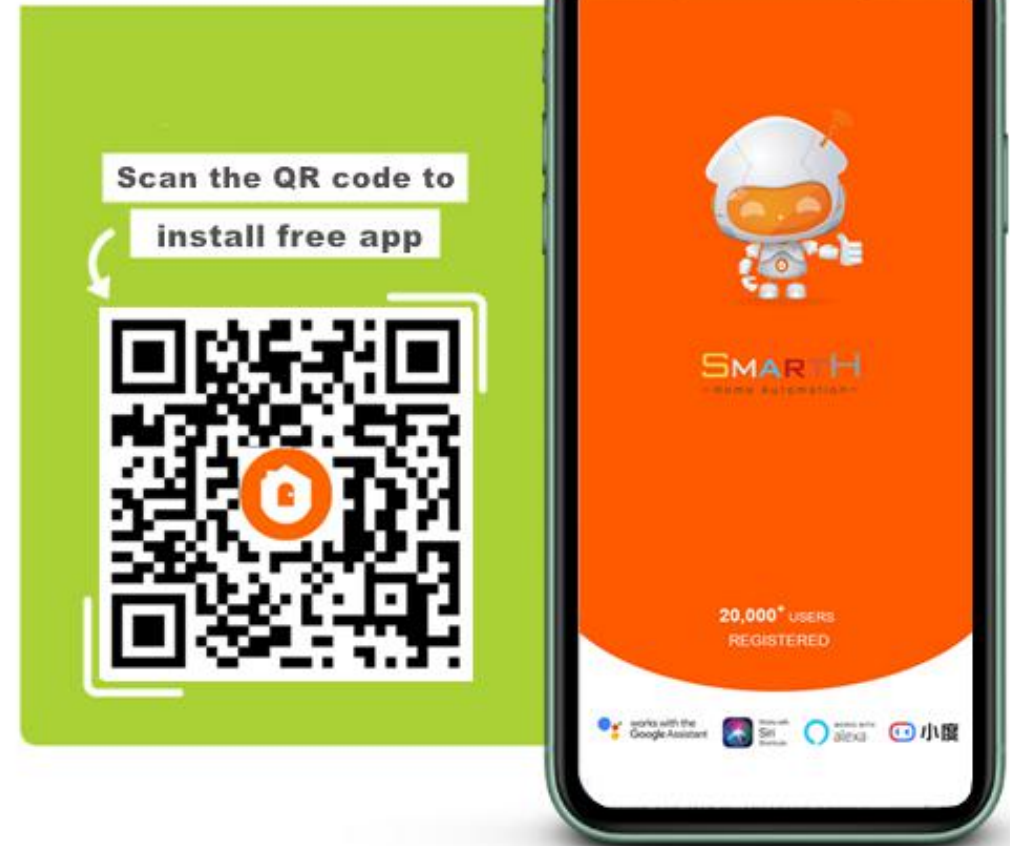
The required times of button presses varies by different door brands/types.

Times	Brand	Types/Color of Smart/Learn
1 Times	Linear	MegaCode 1997-Current 318 MHz
2 Times	Chamberlain	Orange Button 1997-2005 390 MHz
3 Times	Chamberlain	Purple Button 2005-Current 315 MHz
4 Times	Chamberlain	Green Button 1993-1996 390 MHz
5 Times	Genie Overhead Door	Intellicode 2005-Current 315 MHz
6 Times	Genie Overhead Door	Intellicode 1995-Current 390 MHz
7 Times	Stanley	Security Code 1998-Current 310 MHz
8 Times	Chamberlain	Yellow Button 2011-Current 310/315/390 MHz
9 Times	Wayne Dalton	Rolling code 1999-Current 372.5 MHz

5. Press the program button once to exit the configuration steps. You can use the configured button to control your door now. If your door does not response, please reconfigure the button once more.

Install Free App

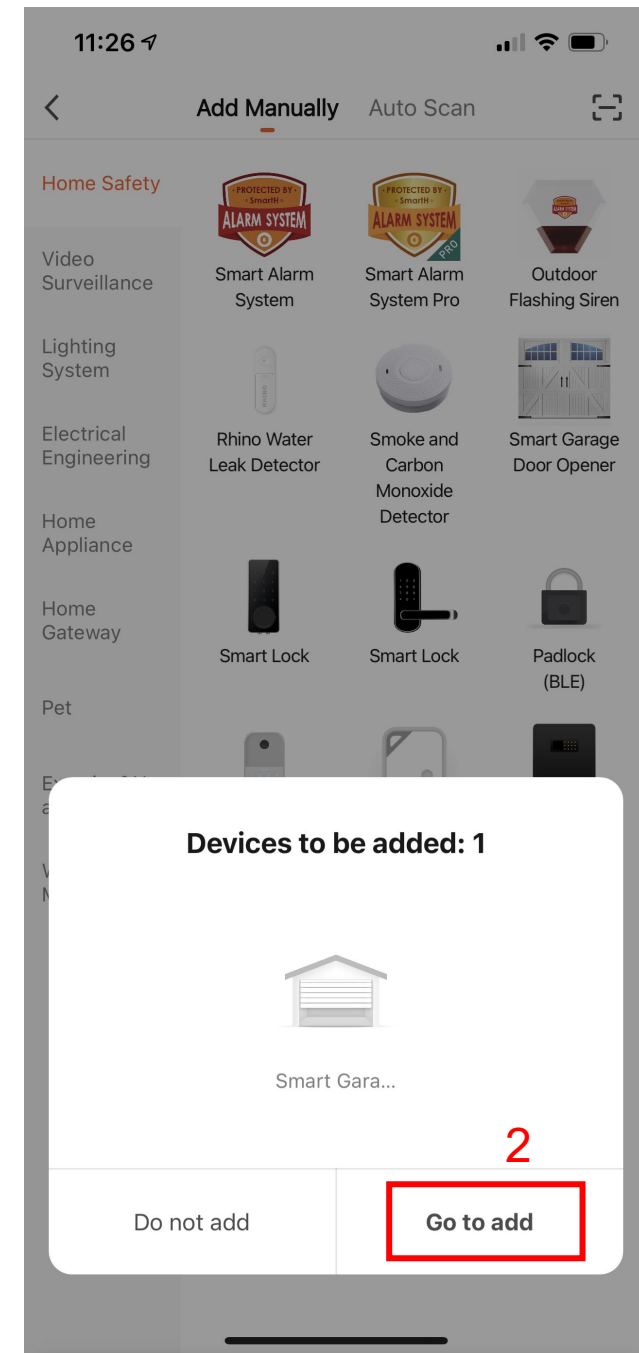
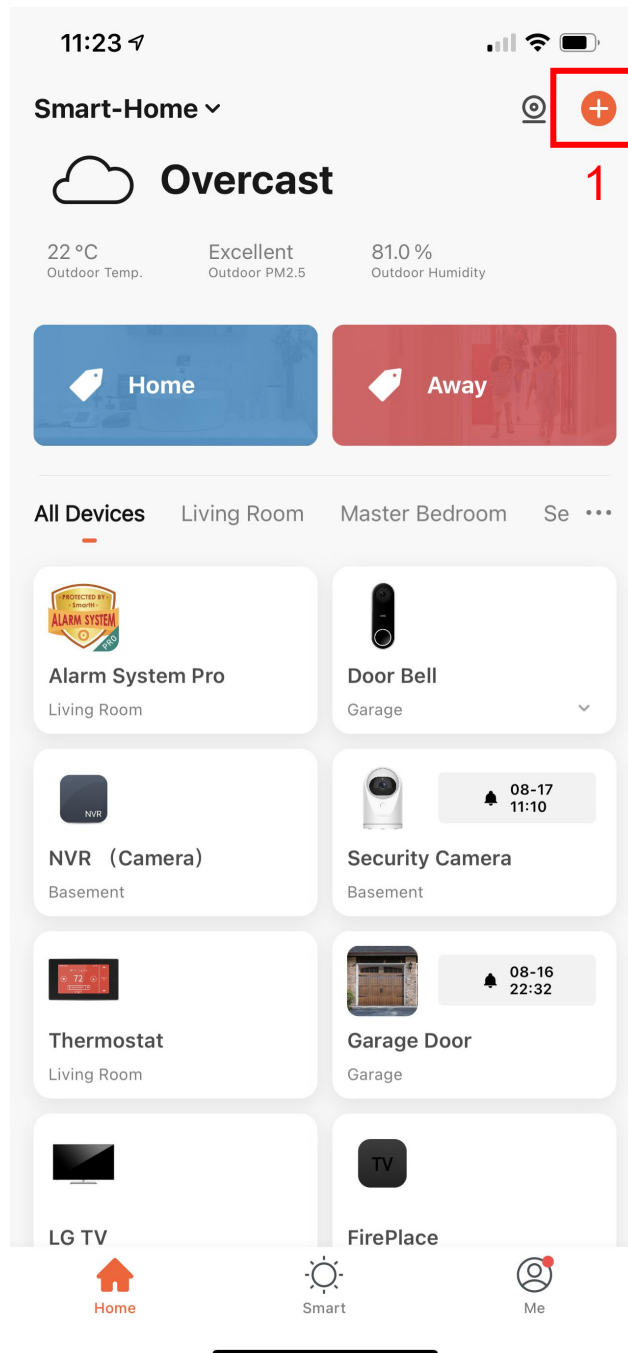
Download APP: scan the QR code below to download and install. Register and login: open the "MySmarth" APP to register and login according to the prompts.



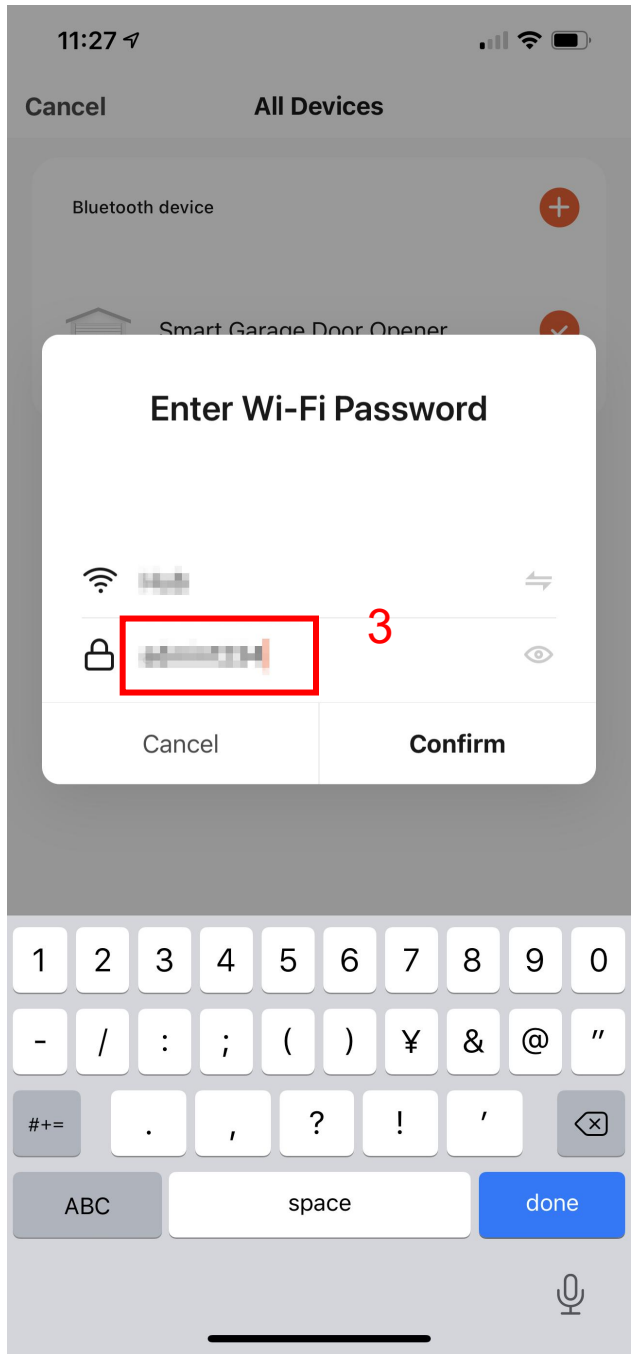
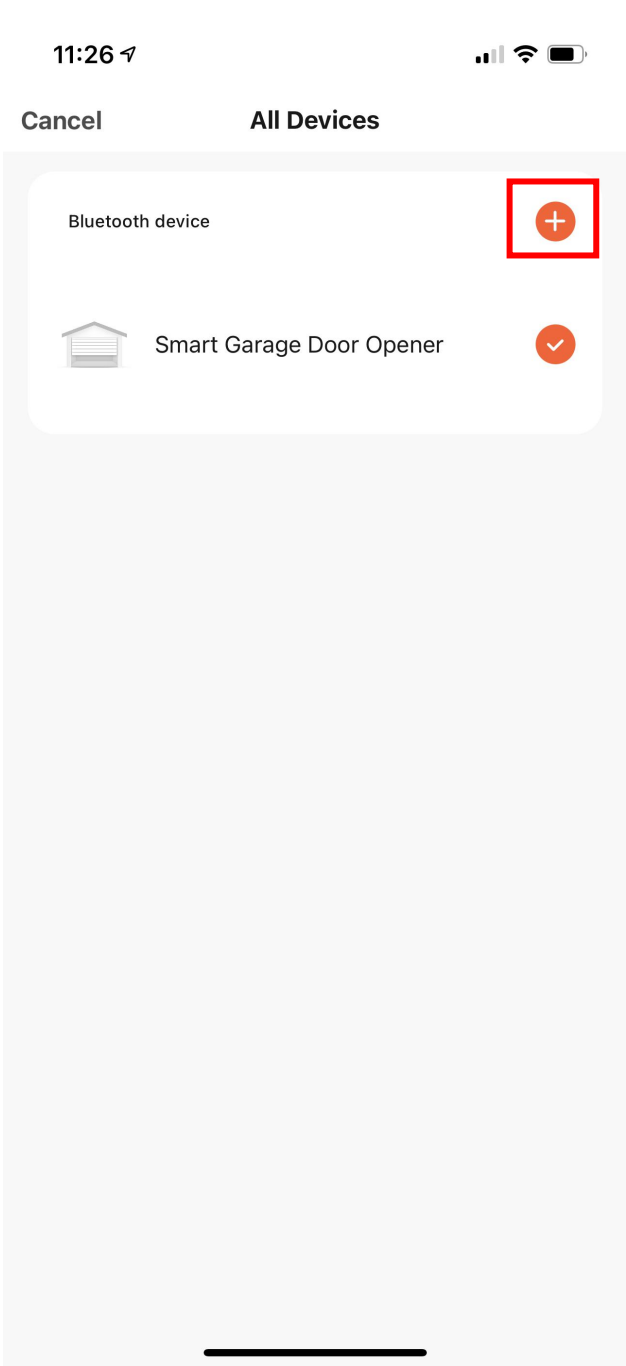
Connect the Garage Door Opener to MySmartH app

IMPORTANT: Make sure your smartphone is connected to your home 2.4Ghz Wi-Fi signal before the following setup. Turn on your smartphone's Bluetooth.

1. Launch the app and tap the Plus (+) in the top right corner to add a device.
2. Tap Go to add



3. Enter your home Wi-Fi name and password, then tap Next.



4. Now your Garage Door Opener is successfully added to **MySmarth** app. Tab Done.

