



Smart IR Remote Controller

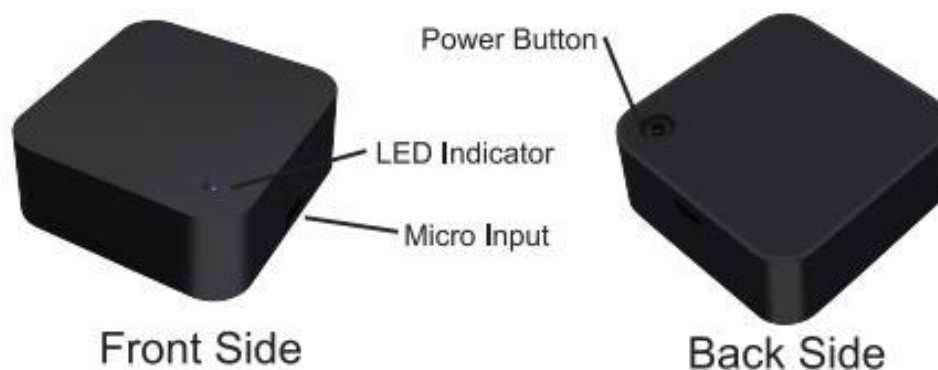
USER MANUAL



Thanks for choosing our product!

Say goodbye to use one remote for each of IR home appliances such as TV, Air conditioner, Set-Top Box, etc. Please kindly read the user manual before usage and keep it for future reference.

Product Presentation:



Remark: please place it like the front side when use

Specification:

- 1) Input : DC 5V/1A
- 2) IR Frequency: 38KHz
- 3) WiFi Frequency: 2.4GHz
- 4) Infrared Range: ≤ 8 meters
- 5) Working temperature: 0°C- 50 °C
- 6) Working humidity: $\leq 85\%$ RH
- 7) Size: 50*50*19mm
- 8) Material: ABS
- 9) Weight: 28 g
- 10) LED indicator: Blue
- 11) Supports Android 4.4 or newer and iOS 8.0 or newer

How to Set up

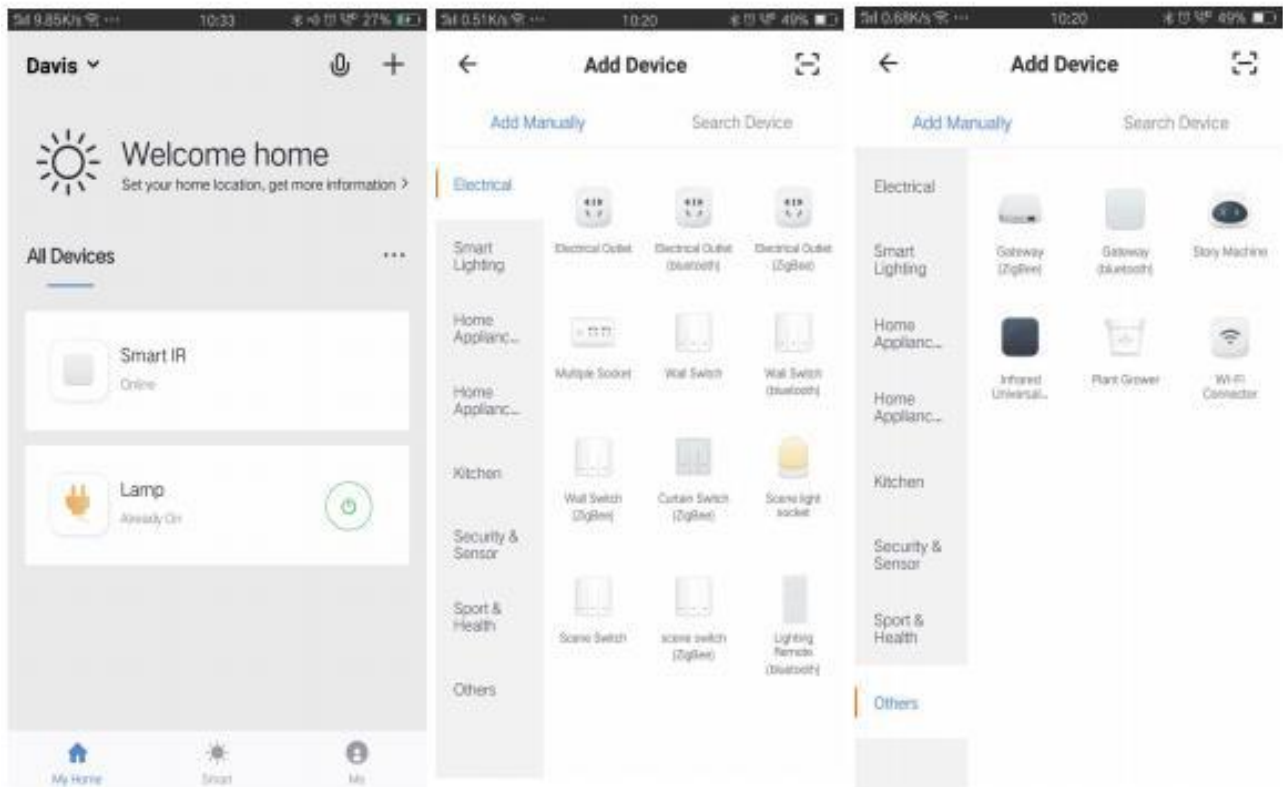
1. Use your phone to scan QR code or search “MySmartH” app in Google Play store or APP Store to download and install it.



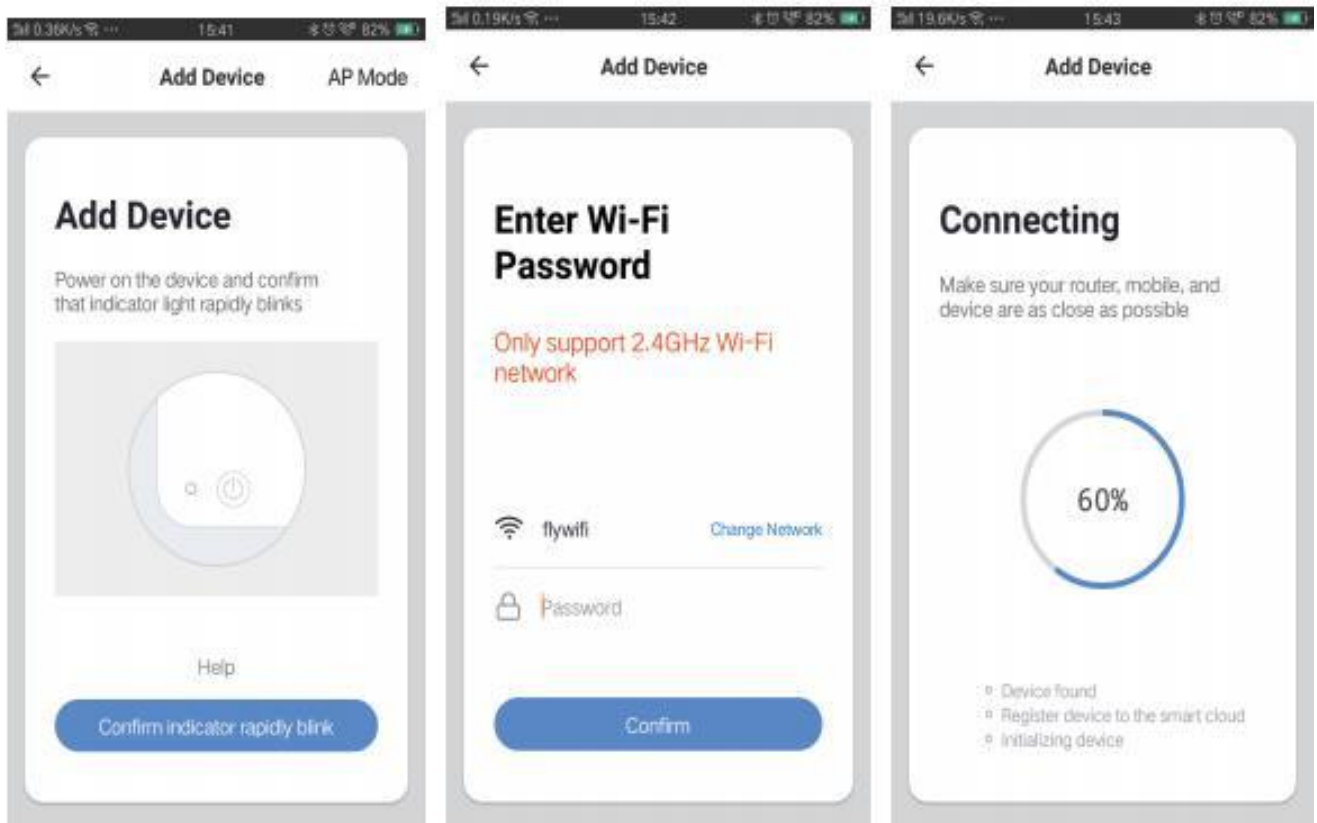
2. Create an account with your mobile number and verification code.



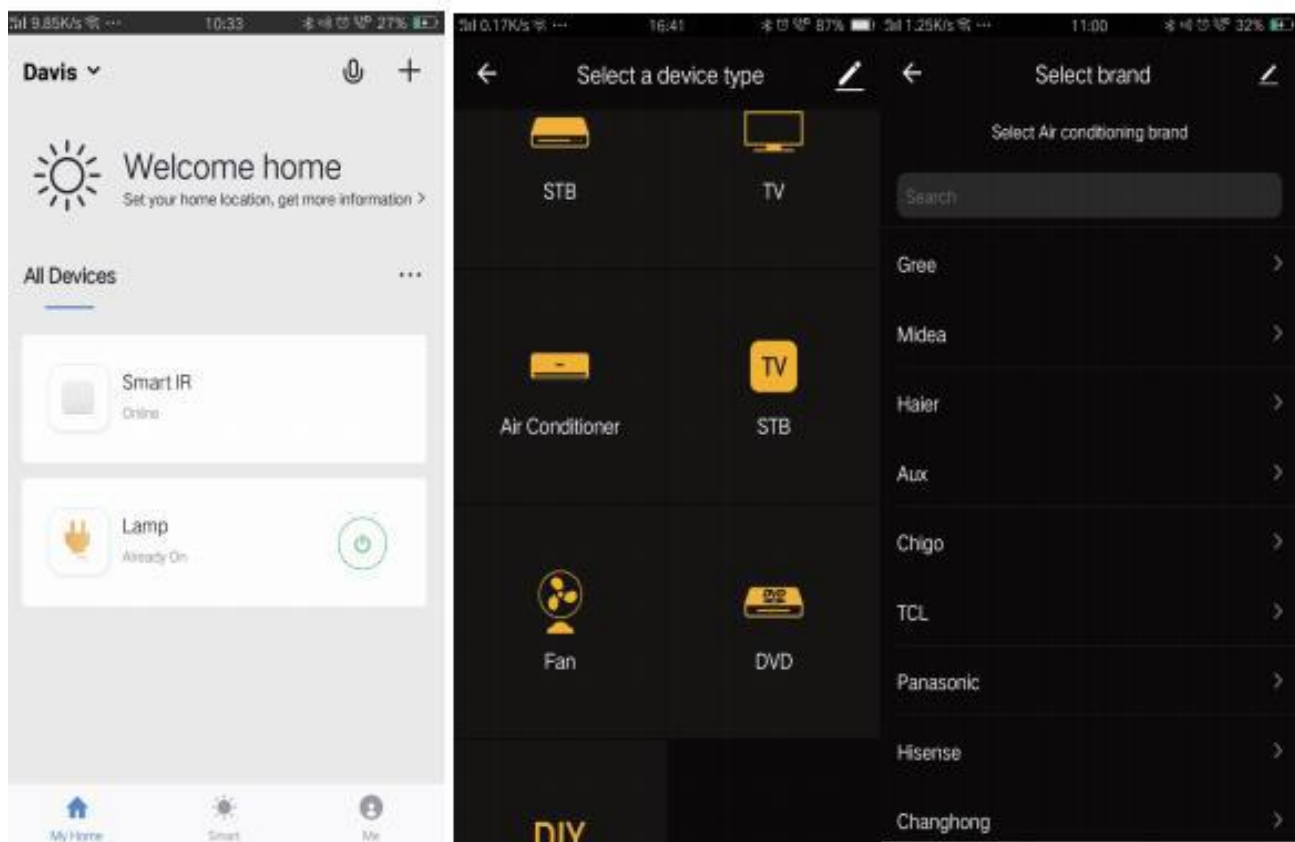
3. Connect your mobile to your WiFi router at your home, click “+” at the upper right corner of homepage and select “Infrared Universal Remote Control” from “Others” type.



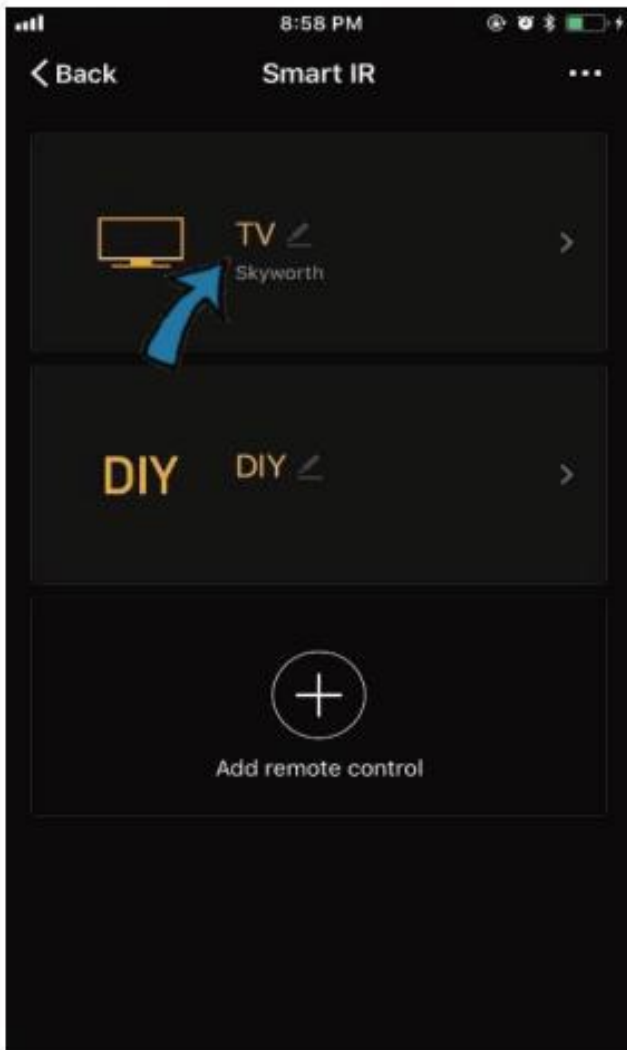
4. Power on remote control, long press power button for about 5 seconds till the blue indicator flashes rapidly. enter wifi password and click“Confirm”,it is connecting to your wifi.



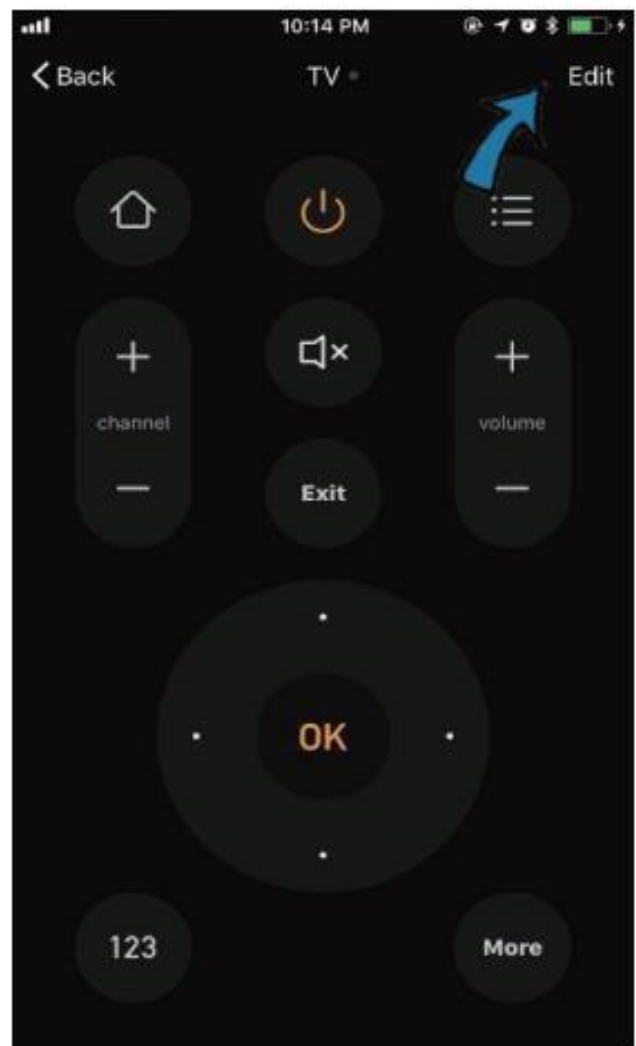
5. Once connection completed, just click“ Completed ”, then click it to add TV, TV box, Fan, Air conditioner with different brands. After addition done, you can click the “Pen” icon to edit device name with your name to avoid conflict with others’ devices when use. (e.g. Jack’s TV)



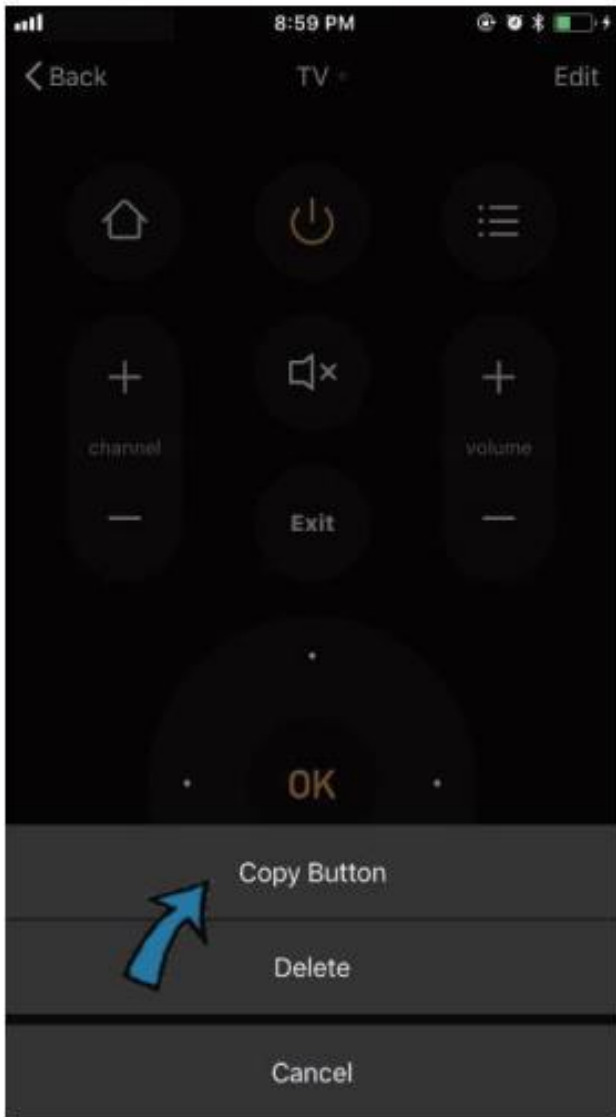
6. If a remote control for an electric device can not be found in the existing brand library, you can copy the keys and enable them to control the electric devices. It now supports TV, TV box ,Set-Top Box and Fan.



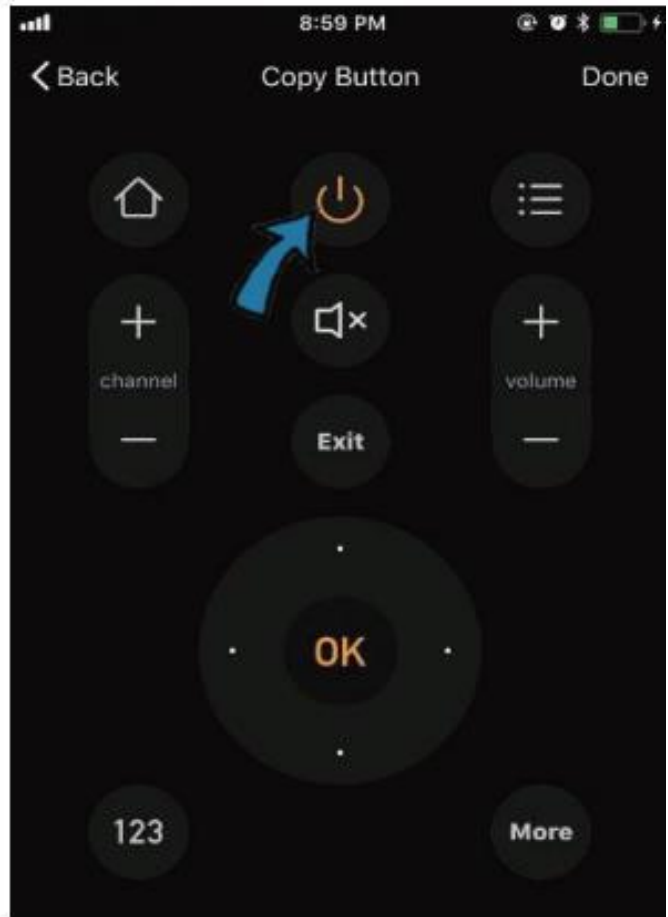
Step 1



Step 2

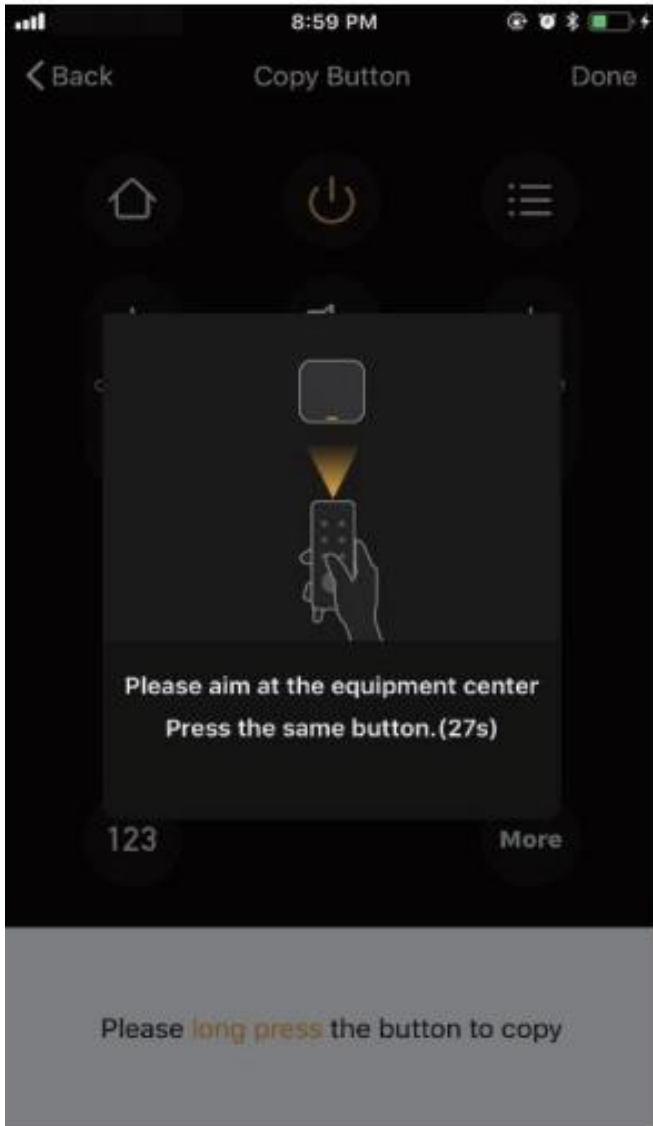


Step 3



Please **long press** the button to copy

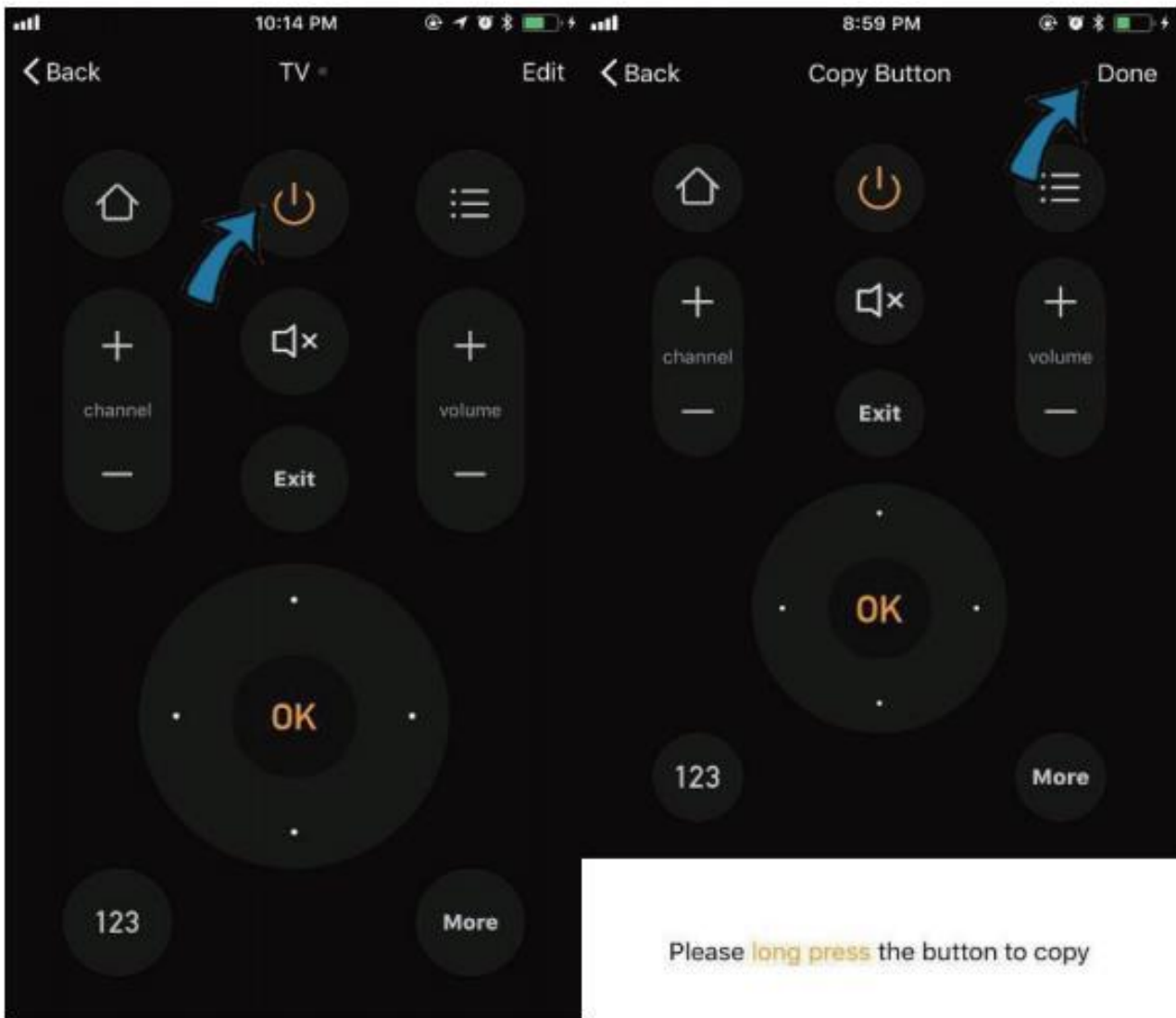
Step 4



Step 5



Step 6



Step 7

Step 8

7. After a key is copied successfully, press it to test whether it works properly. you also can choose to click “done” to save or copy other keys.