



## Certificate of Analysis

**Customer:**

Smash Hemp Company  
9415 High Free Pike  
West Jefferson, OH 43162

Sample ID: **210205006**

Order Number: **CB210205004**

Sample Name: **Cherry Soda- S**

Collected Date: **1/20/2021**

Received Date: **2/9/2021**

COA Released: **2/11/2021**

External Sample ID:

Batch Number: **0159-CS-10202**

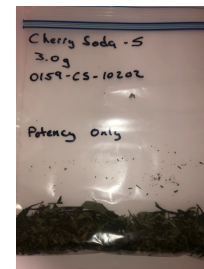
Product Type: **Flower**

Sample Type: **Flower**

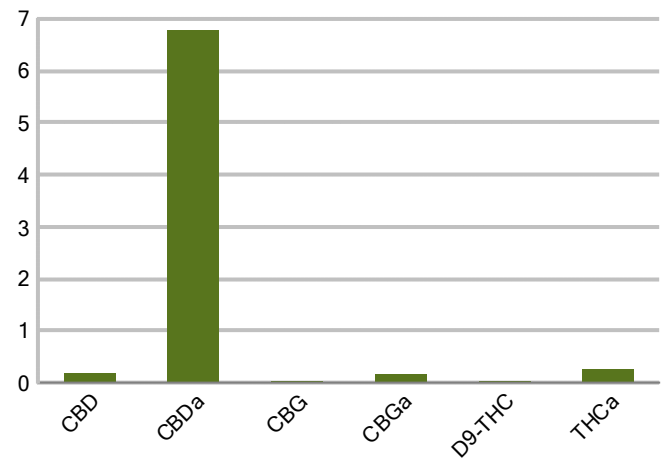
Comments:

### CANNABINOID PROFILE

Analyte	LOQ (%)	% weight	mg/g
CBC	0.01	ND	ND
CBD	0.01	0.182	1.823
CBDa	0.01	6.787	67.87
CBDV	0.01	ND	ND
CBG	0.01	0.021	0.206
CBGa	0.01	0.159	1.586
CBN	0.01	ND	ND
d8-THC	0.01	ND	0.00
d9-THC	0.01	0.026	0.260
THCa	0.01	0.259	2.592
<b>Total Cannabinoids</b>		<b>7.434</b>	<b>74.34</b>
<b>Total Potential THC</b>		<b>0.253</b>	<b>2.533</b>
<b>Total Potential CBD</b>		<b>6.135</b>	<b>61.35</b>
<b>Total Potential CBG</b>		<b>0.160</b>	<b>1.598</b>



Cannabinoids (% weight)



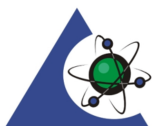
**Ratio of Total Potential CBD to Total Potential THC 24.25 : 1**

**Ratio of Total Potential CBG to Total Potential THC 0.63 : 1**

\*Total Cannabinoids refers to the sum of all cannabinoids detected.

\*Total Potential CBD = (0.877 x CBDa) + CBD. \*Total Potential THC = (0.877 x THCa) + THC. \*Total Potential CBG = (0.877 x CBGa) + CBG.

\*Total Potential THC/CBD are calculated to take into account the loss of an acid group during decarboxylation.



**PJLA**  
Testing  
Accreditation #109588

Authorized Signature

Laboratory Manager

Jamie Hobgood

02/11/2021 10:17 AM

DATE

This product has been tested by CannaBusiness Laboratories using validated testing methodologies and a quality system. Values reported relate only to the product tested. CannaB Laboratories makes no claims as to the efficacy, safety, or other risks associated with any detected or non-detected levels of any compounds reported herein. This Certificate shall r reproduced except in full, without the written permission of CannaBusiness Laboratories. Uncertainty information is available on request. Photo is of sample received by the lab an vary from final packaging. The results apply to the sample as received. ISO/IEC 17025:2017 Accredited.



CannaBusiness Laboratories, LLC  
2554 Palumbo Dr. Lexington, KY 40509

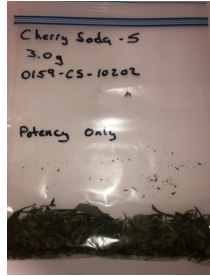


Sample ID: 210205006  
Sample Name: Cherry Soda- S  
Sample Type: Flower

## Certificate of Analysis

### Customer

Smash Hemp Company  
9415 High Free Pike  
West Jefferson, OH 43162



### Overall Batch Results

Pesticide N/A	Moisture Content N/A
Potency <b>PASS</b>	Water Activity N/A
Mycotoxins N/A	Heavy Metals N/A
Microbial Screen N/A	Residual Solvents N/A
Terpenoids N/A	

Sample Name: Cherry Soda- S

Sample ID: 210205006

Product Type: Flower

Sample Type: Flower

Collected Date: 01/20/2021

Received Date: 02/09/2021

Batch Number: 0159-CS-10202

Batch Size:

Sample Size:

COA released: 02/11/2021 10:17 AM

### Potency (mg/g)

Date Tested: 02/10/2021

Method:

Instrument:

<b>0.253 %</b> Total THC	<b>6.135 %</b> Total CBD	<b>7.434 %</b> Total Cannabinoids	<b>74.34 mg/g</b> Total Cannabinoids
-----------------------------	-----------------------------	--------------------------------------	---

Analyte	Result	Units	LOQ	Result	Units
CBC (Cannabichromene)	ND	%	0.010	ND	mg/g
CBD (Cannabidiol)	0.182	%	0.010	1.823	mg/g
CBDa (Cannabidiolic Acid)	6.787	%	0.010	67.87	mg/g
CBDV (Cannabidivarin)	ND	%	0.010	ND	mg/g
CBG (Cannabigerol)	0.021	%	0.010	0.206	mg/g
CBGa (Cannabigerolic Acid)	0.159	%	0.010	1.586	mg/g
CBN (Cannabinol)	ND	%	0.010	ND	mg/g
D8-THC (D8-Tetrahydrocannabinol)	ND	%	0.010	0.00	mg/g
D9-THC (D9-Tetrahydrocannabinol)	0.026	%	0.010	0.260	mg/g
THCa (Tetrahydrocannabinolic Acid)	0.259	%	0.010	2.592	mg/g



### Authorized Signature

*Jamie Hobgood*  
Laboratory Manager

Jamie Hobgood

02/11/2021 10:17 AM

Date Time

NT = Not tested, ND = Not detected; LOQ = Limit of Quantitation; <LOQ = Detected; >ULOL = Above upper limit of linearity; CFU/g = Colony forming units per 1 gram; TNTC = Too numerous to count

CannaBusiness Laboratories  
License # P-0059: (859)-514- 6999 <https://www.cannabusinesslabs.us>

This product has been tested by CannaBusiness Laboratories using validated testing methodologies and a quality system. Values reported relate only to the product tested. CannaBusiness Laboratories makes no claims as to the efficacy, safety, or other risks associated with any detected or non-detected levels of any compounds reported herein. This Certificate shall not be reproduced except in full, without the written permission of CannaBusiness Laboratories. Uncertainty information is available on request. Photo is of sample received by the lab and may vary from final packaging. The results apply to the sample as received. ISO/IEC 17025:2017 Accredited.