

Free Weekly, Magazine
JUST FOR YOU

Publication by
Gail Starkey
Box 989, Tonto Basin, AZ 85553-0989
NEW # (928) 970-0149
jfypub@yahoo.com



Member
Of
Tonto Basin
Chamber of
Commerce



All Hours RV LLC

928-978-7872

allhoursrv@gmail.com



ASK ABOUT RV WATER
SOFTENERS AND TANKLESS
WATER HEATERS

Parts * Supplies * Service
Special Orders Available

Trained Service for:

**Dometic/Atwood, Norcold/Thetford,
Suburban, Coleman Mach, Lippert/Furrion,
Electrical, Plumbing, LP Systems, & More!**



MLS



Ewing Land & Cattle Co.
Linda G. Ewing,
REALTOR®

EFAX: 928-255-4318

Web site: www.realtor.co

Call: 928-978-4448

239 W Crappie Lane: Lovely 3 bd/2ba home. Has 2/car det. Garage; RV hookup; Lovely Arizona room w/Jacuzzi. Easy Care landscaping. Ttl elec. Reverse Osmosis water sys. All appliances **\$325,000. MLS86200**

1.6 acre Vacant Land f S Burton Lane.. Water to West property line; APS available; Great site for your new home, Outstanding views of surrounding mountains, Horses are welcome. **\$99,900**

.40 acres vacant land ; Water on west property line. Manufactured or site built home **\$45,000.**

.40 acre S. Burton Ln Has water & septic. APS available. Level lot ready for your site-built or mfg home. **\$79,900**



Light Truck • Auto • RV
• ATV • UTV • Marine

928.479.2221

Sean Meares

Serving the Rim Country
Since 2000

Hwy 188 & Greenback Rd.
in Punkin Center.
Tonto Basin, Arizona

33 S. Hwy 188
Tonto Basin, AZ 85553

HWY

188

TACKLE

OPEN MON-SAT
CLOSED SUN

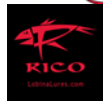
WE HAVE MINNOWS



M.P. 260.3 on HWY 188 (117 Quail Tr)

LP Filled Daily (No Motorhomes)

WIDE SELECTION INCLUDING:



AND

MANY MORE

928-978-7872

DT Mobile RV Repair

Our PRODUCTS

Parts
Repairs
Services
Awning Replacement
Appliance Repair
Appliance Replacement
Heaters Repairs
Gas Valves and Leaks
Roof Penetration Reseal
Clean and Seal Rubber
Roofs
Wash and Wax Exteriors
Pack Wheel Bearings
RV Roof Specialist



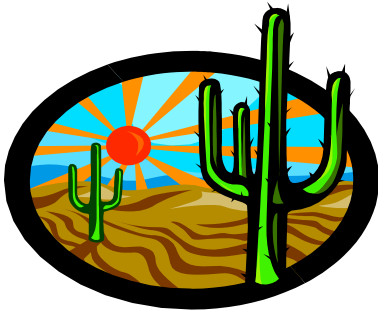
1taylor299@msn.com

Dwight Taylor

WE COME TO YOU

602-228-6211

Meet or Beat any Price!

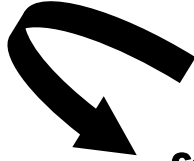


Just For You Publication
PO Box 989
Tonto Basin, AZ 85553
Corner of: Dryer Drive & 101 Starkey Lane



Contact me via:
Email: jfypub@yahoo.com
928-970-0149

Hours: Monday –Tuesday 9-3
Closed: Wednesday, Thursday & Friday
Distribution day is Wednesday AM



Can't find a paper or you'd rather read it online and in color!!!!
Check out: jfypub.com IN COLOR

Just For You

Subscriptions/Postage : \$1.44 per week

ADVERTISING RATES

	1 WK	2 WKS	3WKS	4WKS
2"	9.50	13.50	17.50	21.50
3"	14.25	20.25	26.25	32.25
1/4 PG	19.00	27.00	35.00	42.00
1/2 PG	25.50	37.50	49.50	61.50
PAGE	40.50	60.50	80.50	100.50
INSERT	42.50	62.50	82.50	103.00

- **Long term rates** (over four weeks) cost less PLUS earn **FREE** weeks!!
- ALL rates are based on a 4 weeks per month or 48 weeks per year. (Balance 4 weeks 49,50,51, 52) Four Free weeks are there for holidays or emergency use only such as equipment issues/can't produce the paper. **2022: This year there will be a paper every week**

FREE BONUS: All ads can be seen in color on my website jfypub.com

New ads or changes must be in by **1PM on Monday** to ensure that it gets into the current week's paper!

Make checks payable to: Just For You Pub.

NOTE: All ads are to be paid for in advance!



Specialty Buttons
 \$1.00 ea.
 Specialty Button Discount
 for volume orders

Bookmarks
 Address Cards
 Business Cards
 50 \$8.00
 100 \$15.00

NOTE: No Charge for Obituary Notices

TABLE OF CONTENTS:

Anniversaries/BirthdayPage 8
 Churches.....Pages 8-9
 Meetings/Events:Page 26
 Puzzles.....Pages 12,15, 23
 Realtors
 Ewing Land & Cattle ...Pages 1
 Rambo Realty & Invest .Page 28
 Coldwell/Bishop Realty. Page 27

HOLLYWOOD WALK OF FAME

Garry Moore (born Thomas Garrison Morfit; January 31, 1915 – November 28, 1993) was an American entertainer, comedic personality, game show host, and humorist best known for his work in television. He began a long career with the CBS network starting in radio in 1937. Beginning in 1949 and through the mid-1970s, Moore was a television host on several variety and game shows.



After dropping out of high school, Moore found success first as a radio host and later moved to the medium of television. He hosted several daytime and prime time programs titled The Garry Moore Show, and the game shows I've Got a Secret and To Tell the Truth. He was instrumental in furthering the career of comedic actress Carol Burnett. He became known early in his career for his bow ties and his crew cut fashion.

After being diagnosed with throat cancer in 1976, Moore retired from the broadcasting industry, making only a few rare television appearances. He spent the last years of his life in Hilton Head, South Carolina and at his summer home in Northeast Harbor in Maine. He died on November 28, 1993, at the age of 78.

Moore was born on January 31, 1915, in Baltimore, Maryland, the son of Mason P. Morfit and Mary L. (née Harris) Morfit. He attended Baltimore City College (actually a high school), but dropped out to pursue a career in radio and writing.

Beginning in 1937, he worked for Baltimore radio station WBAL as an announcer, writer and actor/comedian. He used his birth name until 1940, when, while on the air announcing Club Matinee hosted by Ransom Sherman at NBC, Chicago, Sherman held a radio contest to find a more easily pronounceable one. "Garry Moore" was the winning entry, which was submitted by a woman from Pittsburgh who received a prize of \$100. It was on Club Matinee where he met his long-time friend and broadcasting partner Durward Kirby.

PLUMBING REPAIRS

PAUL THOMPSON

PLUMBING REPAIRS OF ALL TYPES

CELL: 970-531-1057

Non Licensed Contractor



Yard by Yard LLC

**Landscaping, Weed Control, Lawncare
Tree Trimming, Irrigation and More!
Weekly/Monthly Maintenance**



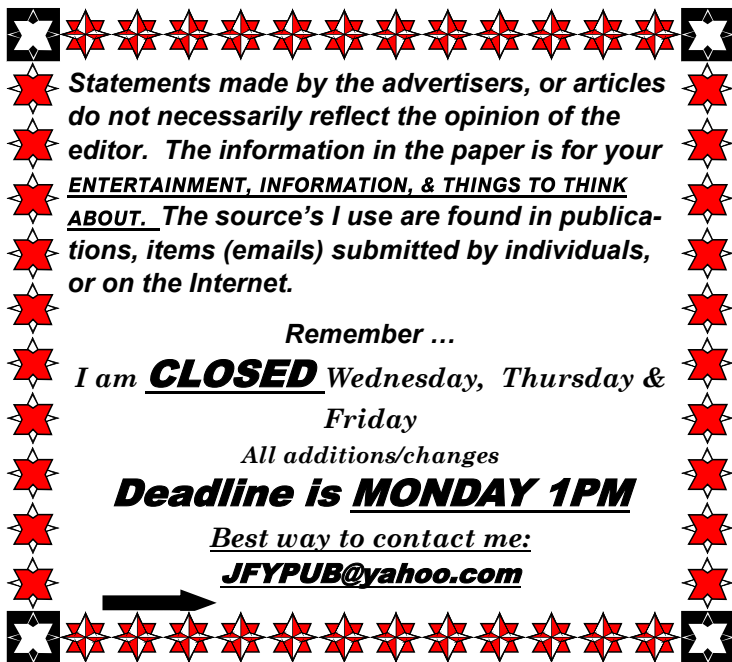
Call Eric: 928-951-4308



Moore headed Talent, Ltd., a variety program on Sunday afternoons in 1941. In the years that followed, Moore appeared on numerous network radio shows. He started out as an announcer and then as support for broadcast personalities, one of whom was Jimmy Durante.

From 1943 to 1947, Durante and Moore had a joint show with Moore as the straight man. Impressed with his ability to interact with audiences, CBS offered him his own show. Starting in 1949, the one-hour daytime variety show The Garry Moore Show aired on CBS. Moore briefly returned to radio as host of NBC's Monitor in 1969.

Television career-Between 1947 and 1950, Moore began to make tentative steps into the new medium as a panelist and guest host on quiz and musical shows. On June 26, 1950, he was rewarded with his own 30-minute CBS early-evening talk-variety TV program, The Garry Moore Show, which was a shorter version of his radio show. Until September 1950, it was also simulcast on radio. During 1950 and 1951, he hosted prime-time variety hour summer replace-


 Statements made by the advertisers, or articles do not necessarily reflect the opinion of the editor. The information in the paper is for your ENTERTAINMENT, INFORMATION, & THINGS TO THINK ABOUT. The source's I use are found in publications, items (emails) submitted by individuals, or on the Internet.

Remember ...

I am **CLOSED** Wednesday, Thursday & Friday

All additions/changes

Deadline is MONDAY 1PM

Best way to contact me:
JFY PUB@yahoo.com

→



Tonto Basin Dental

186 Earl Stephens Way, Tonto Basin, AZ
 ~Next to Heliport~

Dr. Jonathan K. Hanridge, D.D.S.
 Nicole Morgan-R.D.H

Full Service Dental:

- *Dentures * Partial * Crowns*
- *Extractions * Fillings*
- *Root Canals*

Please call for appointment
 (928) 479-3055

Q

ments for Arthur Godfrey and his Friends. He appeared as a guest star on other programs including CBS's Faye Emerson's Wonderful Town.

During his run as a variety-show host, Moore was tapped to host CBS' weekly prime-time TV panel show I've Got a Secret. It premiered on June 19, 1952. On this show, Moore began his friendships with comedian Henry Morgan and game show host and panelist Bill Cullen, with whom he had a long working relationship. Morgan later stated that Moore had helped him keep his job as a television host.

Moore became known for his involvement in the variety of stunts and demonstrations of

the show's contestants. The popularity of I've Got a Secret led to a cameo in the 1959 film It Happened to Jane. In the film, Doris Day's character was a contestant on the show, with Moore and all the panelists playing themselves.

Moore's variety program was moved to the daytime slot, where it ran until June 27, 1958. Within three months of the end of the daytime show, Moore and his longtime colleague Durward Kirby moved the revived The Garry Moore Show into prime time as a Tuesday night comedy and variety hour that ran from September 30, 1958, to June 14, 1964.

Although the show was a bigger hit in prime time, Moore always preferred the daytime housewife audience. He thought it gave lonely housewives something to listen to and watch while they worked. The show provided a break into show business for many performers, including Alan King, Jonathan Winters, Carol Burnett, and Dorothy Loudon. The Garry Moore Show featured regular supporting cast members Durward Kirby, Marion Lorne, Denise Lor, and Ken Carson, as well as a mixture of song-and-dance routines and comedy skits. The show also introduced the public to comedienne Carol Burnett. After the show ended, Burnett became a star in her own right, hosting The Carol Burnett Show, from September 1967 through the spring of 1978.

During preparations for an episode of his variety show, Moore and his writing team knew it wasn't going to be a good episode despite staying up late the night before to do rewrites. So, at the start of the show, Moore went out in front of the live audience and flat out told the audience as well as the audience at home that it wasn't going to be a good show and recommended to the home viewing audience to tune in to what was airing on the rival networks that night. Every time a joke would bomb with the audience, Moore would turn to the camera and say, "it's your fault for still watching this!" The home audience was so fascinated by the frank honesty of Moore that they stuck with the episode, and it was one of the highest-rated episodes of the season.

(Continued from page 4)

The Garry Moore Show was cancelled in 1964, and in the summer of that year, after having been on radio and television for 27 uninterrupted years, Moore decided to retire, saying he had "said everything ever wanted to say three times already." He gave up hosting I've Got a Secret and was replaced by comedian Steve Allen, who would host the show until the end of its run in 1967 (although Moore had ended his retirement before I've Got a Secret left the air, he never returned to the series as host and Allen helmed a subsequent, one-season syndicated revival in 1972). Moore's main activity during his hiatus was a trip around the world with his wife.

On the tenth anniversary broadcast of I've Got a Secret, on June 19, 1962, Moore announced that he had recently had an operation on his right hand, and so that was why he was seen shaking hands with his left hand for a few months, protecting his hand from strong handshakes. After an absence of two years, The Garry Moore Show returned to the CBS prime-time lineup in the fall of 1966. It was canceled mid-season because of low ratings against NBC's highly rated western Bonanza.

The successful Smothers Brothers Comedy Hour replaced The Garry Moore Show in the CBS time slot. Moore then made sporadic television guest appearances such as cameos on Rowan and Martin's Laugh-In, reunions with Carol Burnett on her program, and serving as a panelist on various game shows, before Mark Goodson asked him to host another series.

That show was a revival of To Tell the Truth, which had ended its run on CBS in 1968. Moore was asked to host a revival of the series for syndication, which launched in September 1969. When To Tell the Truth was planned to be revived for syndication, producers Mark Goodson and Bill Todman originally wanted Bud Collyer to host the show once again. But when they called Collyer he declined, citing his poor health.

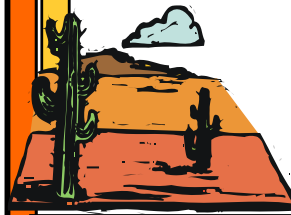
When Goodson and Todman called Moore about the job, he immediately contacted Collyer, who told Moore, "I am just not up to it." Moore often took part in the show's silly and

**JUST FOR YOU PUBLICATION DELIVERY
LOCATIONS**

Butcher Hook Restaurant
Coldwell Banker/ Bishop Realty
HWY 188 Tackle & Supply
IGA Market Place / Ace Hardware
Jakes Corner General Store
Library
Post Office
Punkin Center Bar
Rambo
Tonto Basin Hardware

**Mark & Mary's Property
Maintenance & Services**

Tree Trimming
Landscaping
Plumbing
Cleaning Services
Painting
Handyman Services
Firewood for Sale
Demolition



Mark: 928-200-2231
Mary: 928-200-4268
Office: 928-479-3043

goofy stunts, as he had done on I've Got a Secret, performing magic tricks and cooking. This led to this version of To Tell the Truth's being compared to I've Got a Secret. Moore hosted the series from its premiere until the midway point of the 1976-77 season, the revival's eighth.

Recording-In 1944, Moore recorded six of his radio monologues for Decca, including

Advanced Massage Therapies



Sherri Chapple LMT

541-213-3114

by appointment only

Offering Gift Certificates

Couples massage available

Payson and Tonto Basin

Head to Toe Package \$140/ 1 1/2 hour



Under New Ownership



Punkin Center RV Corral & Mobile Home Park

Public Boat & RV Storage

- Large patio sites for RV, Park Models & MFD home spaces. Water included
- Shaded Ramada's
- Laundry Facilities, Diner located on premises.
- Office & Beauty Shop available for lease.

200 Old Highway 188
Tonto Basin, AZ 85553
For Information Call
928-479-2700

www.punkincenterrvcorral.com



Quality Pumping

928-978-4632 / 928-479-2351

49821 N. Hwy 188 Payson, Az 85541

Quality Pumping Septic & Plumbing Service!!!

Septic, Rooters, Porta Jon Rentals,
Hot Water Heaters, Faucets, ALL your plumbing needs.

his classic "Hugh, the Blue Gnu", his triple-time speed reading of "Little Red Riding Hood", and a calamity-filled version of "In the Good Old Summertime". They were released two years later as Decca 444, an album of three 78rpm records titled "Culture Corner". In 1956, Moore recorded a Columbia LP record album for children. It featured tales by Rudyard Kipling, including "The Elephant's Child" and "How the Camel Got His Hump." Also in 1956, Moore recorded a Columbia LP record album titled "Garry

Moore Presents My Kind Of Music," with contributions by jazz musicians George Barnes, Ernie Caceres, Wild Bill Davison, Randy Hall, Mel Henke, and Sonny Terry. In 1965, he also narrated two children's classics for orchestra back-to-back on a single Westminster LP, Saint-Saens' Carnival of the Animals and Prokofiev's Peter and the Wolf.

Retirement and death-Moore became ill in 1976 and was diagnosed with throat cancer. He left To Tell the Truth shortly before Christmas 1976 to undergo surgery, turning the show over to panelist Bill Cullen. Semi-regular panelist Joe Garagiola also acted as the host for several weeks, claiming he was "pinch-hitting" for Moore.

Moore returned in September 1977 to begin To Tell the Truth's ninth season, to explain his sudden absence and to announce his permanent retirement, explaining that while recovering from his surgery, he believed his throat cancer was a sign that continuing beyond his 42-year career would be "just plain greed". Moore later explained in another interview that he felt comfortable moving on from the world of entertainment. Joe Garagiola hosted the program for the rest of the season, which proved to be its last. After his showbiz retirement, Moore kept getting various offers for more work that he continued to turn down, including frequent phone calls from the producers of The Love Boat.

Moore retired to Hilton Head, South Carolina, where he spent his time sailing, and also at his summer home in Northeast Harbor, Maine. Moore also became a regular humor columnist for the local newspaper The Island Packet with a column titled "Mumble, Mumble", later releasing a book of his columns under the same name in the early 1980s. He made two rare television appearances during his retirement, in a 1984 special on game-show bloopers, hosted by William Shatner, and in a 1990 television tribute to Carol Burnett on Sally. Moore recounted the time on one show, a mix-up forced him and Burnett to share an elevator for a dressing room. The show was live and a short commercial break required a hasty change of costumes. Moore, hoping to save

(Continued on page 7)

(Continued from page 6)

some time, asked his assistant to place his costume for the next sketch in the elevator so he could run there and back. Burnett had the same plan. She ran to the elevator and walked in on Moore in his underwear. Embarrassed, Burnett apologized, but Moore said "it's showbiz" and recommended that they both turn their backs to each other so they could finish their costume change and get back to the show.

Moore, a constant smoker, died of emphysema at Hilton Head on November 28, 1993, at the age of 78. He was buried in Forest Hill Cemetery in Northeast Harbor, Maine. He was named one of the 15 greatest game-show hosts of all time by Time.

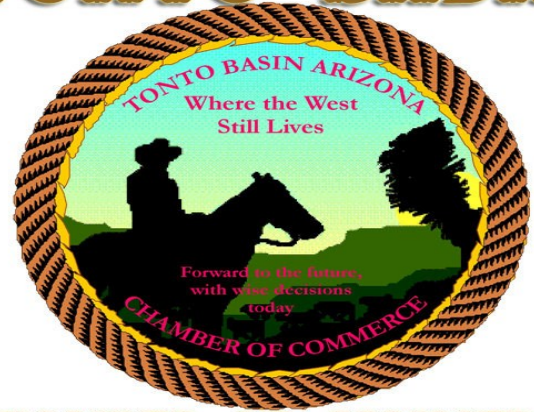
HOLLYWOOD HALL OF FAME

Agnes Robertson Moorehead (December 6, 1900 – April 30, 1974) was an American actress. In a career spanning four decades, her credits included work in radio, stage, film, and television. Moorehead was the recipient of such accolades as a Primetime Emmy Award and two Golden Globe Awards, in addition to nominations for four Academy Awards. She is best known for her role as Endora on the television series Bewitched, but she also had notable roles in films, including Citizen Kane, Dark Passage, All That Heaven Allows, and Show Boat. She is also known for the radioplay Sorry, Wrong Number (1943) and its several subsequent recordings for Suspense. Moorehead garnered four nominations for the Academy Award for Best Supporting Actress, for her performances in: The Magnificent Ambersons (1942), Mrs. Parkington (1944), Johnny Belinda (1948), and Hush...Hush, Sweet Charlotte (1964).



Agnes Robertson Moorehead was born on December 6, 1900, in Clinton, Massachusetts, the daughter of former singer Mary (née McCauley), who was 17 when she was born, and Presbyterian clergyman John Henderson Moorehead. She was of English, Irish, Scottish, and Welsh ancestry. Moorehead later

TONTO BASIN



CHAMBER OF COMMERCE

CHAMBER FUNDRAISER

The Chamber has T-shirts, zip-up hoodie sweat shirts & front license plates for sale. Printed on the front: *Tonto Basin, Arizona* and on the back: *Where the West Still Lives*.



T-Shirts in multiple sizes & colors
Short Sleeve-\$10.00,
Hoodies (XL only) \$25.00
Front License Plates \$15.00
Questions/Purchase Contact:
Kathy (Tonto Basin Public Library)

Board of Directors 2021/2022

President-Gail Starkey, 928-970-0149
Vice President-Rosemary Goff, 928-978-1840
Secretary-Romaine Heap 928-787-9117
Treasurer-Lacey Whitehead 928-812-5945
Web Master-Ron Starkey, 928-970-0148
Reservations-Joe Larry Mason 602-796-6712
Member at Large-Linda Mason, 602-577-3346
Member at Large-Brian Nail-480-262-3485
Member at Large-Barbara Miller 480-518-3001
Member at Large-Amy & Tom Baker
Member at Large-Greta Snyder 602-885-0616

Chamber Meets the 3rd Thursday 9 30

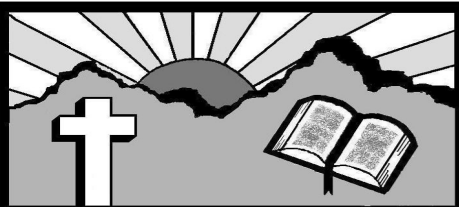
<http://www.tontobasinchamber.org/>

Chamber Reservations

Joe Larry Mason, 602-796-6712

~We have banquet tables & chairs to lend.~

Deposit due at pickup and returned when table are returned, clean and undamaged.



TONTO BASIN BIBLE CHURCH

P.O. Box 84

(928) 479-2299

Pastor Robert Melotti

HIGHWAY 188 & DRYER DRIVE

www.tontobasinbiblechurch.org

SERVICE SCHEDULE

Sunday School.....9:30 AM

(Nursery through Adult)

Worship Service.....10:45 AM

(Nursery/Kids Church Provided)

M

claimed that she was born in 1906 to appear younger for acting parts. She recalled that she made her first public performance at the age of three, when she recited the Lord's Prayer in her father's church. The family moved to St. Louis, Missouri, and her ambition to become an actress grew "very strong". Her mother indulged her active imagination, often asking, "Who are you today, Agnes?" while Moorehead and her younger sister Peggy (born Margaret Ann) engaged in mimicry. This involved coming to the dinner table and imitating their father's parishioners; they were further encouraged by his amused reactions. Moorehead rarely spoke of her sister after her suicide at age 23.

As a young woman, Moorehead joined the chorus of the St. Louis Municipal Opera Company, known as "The Muny". In addition to her interest in acting, she developed a lifelong interest in religion; in later years, actors such as Dick Sargent recalled Moorehead's arriving on the set with "the Bible in one hand and the script in the other".

Birthdays & Anniversaries **Apr 28 - May 4**

BIRTHDAYS

Lee Jay Goodwin 4/28
Shirley Pratt 4/29
Tweetie Mercer 4/29
Wayne Harper 4/29
Cindy O'Neil 5/1
Jim Polk 5/1
Carolyn Chamberlin 5/2
Lori Bellows 5/2
Loann Dixon 5/2
Peggy Felton 5/2
Jodi Ahlman 5/3
Kasey Chamberlin 5/4
Kelton Taylor 5/4

ANNIVERSARY'S

Bob & Judy
Morrison
4/29
Guy & Gigi
Swenson
4/30
Dan & Kim
Aaron
5/2
Larry & Jennifer
Lattanzi
5/2
Danny & Debbie
Tuzon
5/3
Steve & Nancy
Matlock
5/3

Please, I need your help!
If you see anyone that needs to be removed, changed or you would like to add you & your family, email: jfypub@yahoo.com

Moorehead always said that she graduated from Central High School in St. Louis in 1918. Moorehead earned a bachelor's degree in 1923, majoring in biology at Muskingum College in New Concord, Ohio. While there, she also appeared in college stage plays. She received an honorary doctorate in literature from Muskingum in 1947, and served for a year on its board of trustees. When her family moved to Reedsburg, Wisconsin, she taught public school for five years in Soldiers Grove, Wisconsin, while she also earned a master's degree in English and public speaking at the University of Wisconsin (now the University of Wisconsin-Madison). She then pursued postgraduate studies at the American Academy of Dramatic Arts, from which she graduated with honors in 1929. Moorehead also received an honorary doctoral degree from Bradley University in Peoria, Illinois.

Moorehead's early acting career was unsteady, and although she was able to find stage work, she was often unemployed. She later recalled going four days without food, and said that it had taught her "the value of a dollar". She found work in radio and was soon in demand, often working on several

programs in a single day. She believed that it offered her excellent training and allowed her to develop her voice to create a variety of characterizations. Moorehead met actress Helen Hayes, who encouraged her to enter films, but her first attempts were met with failure. When she was rejected as not being "the right type", Moorehead returned to radio.

By 1937, Moorehead had joined Orson Welles' Mercury Players, as one of his principal performers along with Joseph Cotten. (In an appearance on The Dick Cavett Show on February 19, 1973, she revealed that, in 1922, she had by chance met Welles (15 years her junior) when he was a mere seven years old at the Waldorf-Astoria Hotel in New York City.) She performed in his The Mercury Theatre on the Air radio adaptations, and had a regular role opposite Welles in the serial The Shadow as Margo Lane. In 1939, Welles moved the Mercury Theatre to Hollywood, where he started working for RKO Pictures. Several of his radio performers joined him, and Moorehead made her film debut as the mother of his own character, Charles Foster Kane, in Citizen Kane (1941), considered by most film critics as one of the best films ever made. Moorehead was featured in Welles' second film, The Magnificent Ambersons (1942), and received the New York Film Critics Award and an Academy Award nomination for her performance. She also appeared in Journey Into Fear (1943), a Mercury film production.

Moorehead received positive reviews for her performance in Mrs. Parkington (1944), and the Golden Globe Award for Best Supporting Actress and an Academy Award nomination. Moorehead played another strong role in The Big Street (1942) with Henry Fonda and Lucille Ball, and then appeared in two films that failed to find an audience, Government Girl (1943) with Olivia de Havilland and The Youngest Profession (1944) with adolescent Virginia Weidler.

By the mid-1940s, Moorehead became a Metro-Goldwyn-Mayer contract player, negotiating a \$6,000-a-week contract, which also allowed her to perform on radio, an unusual clause at the time. Moorehead explained that MGM usually refused to allow their actors to appear on radio, as "the actors didn't have

The Fellowship



**Desert Community
Christian Fellowship**

Hwy 188 & Stephens Way
Tonto Basin, AZ (928) 479-2216

Schedule of Services:

Sunday School (Children, Men & Women): 9:15 AM

Sunday Morning Worship: 10:45 AM

We have Children's Church & Nursery for little ones

Sunday Evening Bible Study: 6:00 PM

Thursday Evening Bible Study: 6:00 PM

(Livestreaming Sunday Morning Service on Facebook)

**Where the Word
of God is preached
& friends become
family**

Pastor Mike Fabritz
A Southern Baptist Church

**St. Therese
Catholic
Chapel**
928-473-3568

Sunday Mass
12:00 Noon
Roosevelt, AZ

Located two streets east of
Roosevelt Lake Resort by the Library
HWY 188 & Stagecoach Trail



Tonto Creek Storage Complex, LLC

45596 Hwy. 188 Ste. A
Tonto Basin, AZ 85553

Call for Pricing & Availability!
928/978-3500
Manager Romaine Heap

Reserve online- www.tontocreekstorage.com
Email: store@tontocreekstorage.com

Mini Storage - 5X10, 10X10, 10x15,
10X20, 10X30
Boat & RV Storage - Open, Covered, Gated (12X32)
24 Hour Access - On Site Security, Wider Aisles, Larger Spaces!!
Highly visible Consignment Area-Bring your RV, Boat, ATV
Electric available in all Covered Units!

the knowledge or the taste or the judgment to appear on the right sort of show." In 1943-1944, Moorehead portrayed "matronly housekeeper Mrs. Mullet", who was constantly offering her "candied opinion", in the Mutual Broadcasting System's *The Adventures of Leonidas Witherrall*; she inaugurated the role on CBS Radio.

Throughout her career, Moorehead skillfully portrayed puritanical matrons, neurotic spinsters, possessive mothers, and comical secretaries. She had supporting roles in *The Youngest Profession* (1943), *Since You Went Away* (1944), and the crime drama *Dark Passage* (1947), starring Humphrey Bogart and Lauren Bacall. She then played Aggie McDonald in the 1948 film, *Johnny Belinda*. She played Parthy Hawks, wife of Cap'n Andy and mother of Magnolia, in MGM's hit 1951 remake of *Show Boat*. Moorehead was in Broadway productions of *Don Juan in Hell* in 1951-1952, and *Lord Pengo* in 1962-1963.

In her first radio role, Moorehead appeared as a replacement for Dorothy Denvir's role as Min Gump in *The Gumps*. During the 1940s

and 1950s, Moorehead was one of the most in-demand actresses for radio dramas, especially on the CBS show *Suspense*. During the 946-episode run of *Suspense*, Moorehead was cast in more episodes than any other actor or actress. She was often introduced on the show as the "first lady of *Suspense*". Moorehead's most successful appearance on *Suspense* was in the play *Sorry, Wrong Number*, written by Lucille Fletcher, broadcast on May 18, 1943. Moorehead played a selfish, neurotic woman who overhears a murder being plotted via crossed phone wires and eventually realizes she is the intended victim. She recreated the performance six times for *Suspense* and several times on other radio shows, always using her original, dog-eared script. The May 25, 1943 airing was made part of the National Sound Registry by the Library of Congress in 2014. In 1952, she recorded an album of the drama, and performed scenes from the story in her one-woman show in the 1950s. Barbara Stanwyck played the role in the 1948 film version.

In 1941, Moorehead played Maggie in the short-lived *Bringing Up Father* program on

the Blue Network. From 1942 to 1949, Moorehead played the role of the mayor's housekeeper in the radio version of Mayor of the Town. She also starred in The Amazing Mrs. Danberry, a situation comedy on CBS in 1946. Moorehead's title character was described as "the lively widow of a department store owner who has a tongue as sharp as a hatpin and a heart as warm as summer." Moorehead played one of her last roles on January 6, 1974, as Mrs. Ada Canby in the ironically titled "The Old Ones Are Hard to Kill", the inaugural episode of CBS Radio Mystery Theater.

In the 1950s, Moorehead continued to work in films and appeared on stage across the country. Her stage roles included a national tour of Shaw's Don Juan in Hell, co-starring Charles Boyer, Charles Laughton, and Cedric Hardwicke, and the pre-Broadway engagements of the new musical The Pink Jungle. She had a supporting role in the big-budget Howard Hughes film The Conqueror (1956), starring John Wayne and Susan Hayward, a film she later regretted appearing in. She starred in The Bat (1959) with Vincent Price. She appeared as the hypochondriac Mrs. Snow in Disney's hit film Pollyanna (1960). She starred with Bette Davis, Olivia de Havilland, Mary Astor, and Joseph Cotten in Hush...Hush, Sweet Charlotte (1964) as the maid Velma, a role for which she was nominated for a Best Supporting Actress Academy Award.

In 1959, Moorehead guest-starred on many series, including The Rebel and Alcoa Theatre. Her role in the radio play Sorry, Wrong Number inspired writers of the CBS television series The Twilight Zone to script an episode with Moorehead in mind. In "The Invaders" (broadcast January 27, 1961), Moorehead played a woman whose isolated farm is plagued by mysterious intruders. Moorehead found the script odd, because it had only one line of dialogue, at the very end. Her character gasped in terror once or twice, but never spoke. In Sorry, Wrong Number, Moorehead offered a famed, bravura performance using only her voice.

Moorehead also had guest roles on Channing, Custer, Rawhide in "Incident at Poco Tiempo" as Sister Frances, and The Rifleman. On February 10, 1967, she portrayed Miss Emma

Mike Boyd, Insurance Agency

602-206-7004

Email: mikeboydins@MSN.com

**Health Insurance, Prescription
Drug Plans,
Stand-Alone Visual/Dental,
Supplemental Health,
Auto/home/life Insurance,
Disability
"A Tonto Basin Resident"**

Gone Fishin' RV Resort



**Public Open Boat Storage
Full Hook-ups
Large Shaded Ramada
Laundry Facilities
Quiet Atmosphere**

"The park was very neat and clean. We stayed for a couple months and really enjoyed it. The park is small and very quiet. The people are friendly and we look forward to our next stay."

**Gone Fishin' RV Resort
292 N Shreeve Lane, Tonto Basin, AZ
Call or text Jim for availability
480-777-1191**

Valentine in "The Night of the Vicious Valentine" on The Wild Wild West, a performance for which she won a Primetime Emmy Award for Outstanding Supporting Actress in a Drama Series.

In 1964, Moorehead accepted the role of Endora, Samantha's (Elizabeth Montgomery) mortal-loathing, quick-witted witch mother in

NUMBER-839

- | | | | | |
|----------|------|----------|-------------------|-----------|
| 3 DIGITS | 3148 | 8166 | 64344 | 5669227 |
| 021 | 3249 | 8793 | 66163 | 8182384 |
| 063 | 3288 | | 68738 | |
| 064 | 3792 | 5 DIGITS | 68789 | 8 DIGITS |
| 196 | 5088 | 01327 | 78492 | 44768691 |
| 208 | 5498 | 20752 | 81621 | 46499036 |
| 262 | 5539 | 21138 | 91646 | 55755813 |
| 282 | 5626 | 26326 | 95567 | 91928774 |
| 355 | 6162 | 33137 | | |
| 446 | 6626 | 41330 | 6 DIGITS | 9 DIGITS |
| 606 | 7441 | 48416 | 483197 | 538469335 |
| 607 | 7615 | 55135 | 679275 | 737557369 |
| 619 | 7714 | 56895 | | |
| 646 | 7995 | 61334 | 7 DIGITS | |
| 654 | 8143 | 62018 | 2912236 | |
| 732 | 8163 | 62821 | 4561903 | |
- Answer on page 112

826

888

917

958

994

4 DIGITS

0458

0617

1327

1336

1584

1696

1835

2166

2583

3049

the situation comedy *Bewitched*. She later commented that she had not expected it to succeed and that she ultimately felt trapped by its success, but she had negotiated to appear in only eight of every 12 episodes made, thus allowing her sufficient time to pursue other projects. She also felt that the television writing was often below standard and dismissed many of the *Bewitched* scripts as "hack" in a 1965 interview for *TV Guide*. The role brought her a level of recognition that she had not received before as *Bewitched* was in the top-10 programs for the first few years it aired.

Moorehead received six Emmy Award nominations, but was quick to remind interviewers that she had enjoyed a long and distinguished career. Despite her ambivalence, she remained with *Bewitched* until its run ended in 1972. She commented to the *New York Times* in 1974, "I've been in movies and played theater from coast to coast, so I was quite well known before *Bewitched*, and I don't particularly want to be identified as a witch." Later that year, she said she had enjoyed playing the role enough, but it was not challenging and the show itself was "not breathtaking", although her flamboyant and colorful character appealed to children. She expressed a fondness for the show's star, Elizabeth Montgomery, and said she had enjoyed working with her. Co-star Dick Sargent, who in 1969 replaced the ill Dick York as Samantha's husband Darrin Stephens, had a more difficult relationship with Moorehead, describing her as "a tough old bird."

NUMBER-838

6	0	9	9		0	6	3	4	9		1	3	9	9											
5	4	9	9		8	0	5	7	8		8	2	2	2											
9	1	0	8		0	2	3	9	5		4	4	8	1											
6	7	9	3	1	8	5	4				7	5	2	2	7										
					2	2	2	2			3	6	5	7											
5	7	1	8	1	8					6	0	2	6	0	9	6									
2	4	4	7	5						3	6	1	5	8	9	3	3								
8	1	3			6	4	9	7	8					5	7	6									
0	1	3	4	4	2	0	9							5	1	0	2	2							
		9	1	0	4	2	2	3						4	1	1	0	4	1						
					5	1	2	0						2	0	9	2								
0	1	8	8	5						7	5	5	9	1	7	5	2								
5	2	7	5							5	5	8	4	6						3	9	6	7		
4	5	5	8							3	2	1	3	0							3	9	3	5	
8	0	6	3							1	0	5	3	2								9	6	2	1

In fall 1964, Moorehead participated in a 5-minute commercial spot featuring casts of both *Bonanza* and *Bewitched*, announcing the new 1965 Chevrolet line. Moorehead was featured with Dan Blocker extolling the virtues of the new '65 Chevy II.

In the 1970s, Moorehead's life was increasingly affected by declining health. In 1970, Moorehead appeared as a dying woman who haunts her own house in the early *Night Gallery* episode "Certain Shadows on the Wall". She co-starred with Shelley Winters and Debbie Reynolds in the horror film *What's the Matter with Helen?* (1971) and had the lead role in the low-budget ax murderer film *Dear*



TURQUOISE COWBOY
Wednesday-Saturday
10:00 am to 5:30 pm
Sunday, noon To 5:30 pm

Mother's Day is Sunday May 8th

Turquoise Cowboy will have fresh flowers and a great selection of Mother's Day gifts.

We have Black Hills Gold and Native American jewelry.

All jewelry will be 10% off May 7th.

Graduation and Mother's Day cards are in stock.

HWY 188 Mile Marker 259
Tonto Basin, AZ 85553
928-458-2413

Two doors down from the Butcher Hook Restaurant

Danny & Marva Riccitelli

Dead Delilah (1972) with Will Geer, her last starring role. She also reprised her role in Don Juan in Hell on Broadway and on tour, with an all-star cast that featured Edward Mulhare, Ricardo Montalban, and Paul Henreid.

Moorehead supplied the voice of the friendly "Goose" in Hanna-Barbera's 1973 adaptation of E. B. White's children's book Charlotte's Web.

For the 1973 Broadway adaptation of Gigi, Moorehead portrayed Aunt Alicia and performed various songs, including "The Contract" for the original cast recording. She fell ill during the production, resulting in Arlene Francis having to replace her. Moorehead died shortly afterward.

In January 1974, three months before her death, Moorehead performed in two episodes (including the first) of CBS Radio Mystery Theater, the popular series produced by old-time radio master Himan Brown.

In 1930, Moorehead married actor John Griffith Lee; they divorced a year after fostering a boy named Sean in 1952. She married actor Robert Gist in 1954, and they divorced in 1958.

Sexuality-Moorehead's sexuality has been the subject of much speculation and dispute. A number of articles that appeared in periodicals in the alternative press have identified her as a lesbian. Paul Lynde, Moorehead's co-star on Bewitched, stated: "Well, the whole world knows Agnes was a lesbian - I mean classy as hell, but one of the all-time Hollywood dykes". Journalist Boze Hadleigh reported an incident, also sourced to Lynde, in which, when she caught one of her husbands cheating on her, "Agnes screamed at him that if he could have a mistress, so could she." In an interview, Moorehead was reported to have acknowledged her same-sex orientation while she identified a number of other Hollywood actresses who "enjoyed lesbian or bi relationships."



Bonds Auto Home
Commercial RV ATV
Boat Motorcycles

GET THE SERVICE YOU DESERVE,
CALL FOR ALL YOUR INSURANCE NEEDS!

Linnea Macier, Owner
Laci Franks, Agent
408 S. Beeline Hwy. Suite B
Payson, AZ 85541
Office 928-474-3701
480-375-8266

**100% AMBULANCE
COVERAGE**

**AIR
OR**

GROUND



**A PLAN THAT COULD SAVE
YOUR LIFE - AND YOUR LIFE
SAVINGS. GIVE ME A CALL
SHEILA 928.951.2067**

Moorehead's close friend Debbie Reynolds stated categorically that Moorehead was not a lesbian. Reynolds's autobiography mentions the rumor and states it was started "maliciously" by one of Moorehead's husbands during their divorce. Moorehead's longtime friend and producer Paul Gregory concurs in the assessment. Quint Benedetti, Moorehead's longtime employee who was homosexual, also stated that Moorehead was not a lesbian and attributed the story to Paul Lynde's frequent gossiping and rumor-mongering.

Moorehead rarely spoke publicly about her political beliefs, but she supported both Franklin Delano Roosevelt (she portrayed Eleanor Roosevelt multiple times over the course of her career), and close friend Ronald Reagan for his 1966 run for governor of California.

Moorehead died of uterine cancer on April 30, 1974, in Rochester, Minnesota, aged 73. Her sole immediate survivor was her mother Mary, who died in 1990, aged 106. It is speculated that Moorehead may have developed cancer from radioactive fallout from atmospheric atomic bomb tests while making The Conqueror with John Wayne in St. George, Utah. Several production members, as well as Wayne himself, Susan Hayward, Pedro Armendáriz (who died by suicide) and its director Dick Powell, later succumbed to cancer and cancer-related illnesses. The cast and crew totaled 220 people. By the end of 1980, as ascertained by People, 91 of them had developed some form of cancer, and 46 had died of the disease. Sandra Gould said Moorehead was specifically concerned about being harmed by radiation from The Conqueror shoot.

Brian Dunning, author and host of the science podcast Skeptoid, has called into question the allegations of a connection between the death of Moorehead and others supposedly exposed to radioactive fallout. In a 2010 episode of his podcast, Dunning states that the original source of the claim "was apparently a 1979 article in the tabloid The Star by Peter Brennan, who merely speculated about the coincidence without doing any real research."

Moorehead is entombed in a crypt at Dayton Memorial Park in Dayton, Ohio. In 1994, she was posthumously inducted into the St. Louis Walk of Fame.

Moorehead bequeathed \$25,000 to Muskingum College, with instructions to fund one or more "Agnes Moorehead Scholarships". She also left half of her manuscripts to Muskingum with the other half going to the University of Wisconsin. Her family's Ohio farm went to John Brown University in Siloam Springs, Arkansas, along with her collection of Bibles and biblical scholarship materials.

Her mother Mary received all of Moorehead's clothing and jewelry, and Moorehead made provisions to support Mary for the rest of her life. The Beverly Hills home was left to her attorney Franklin Rohner, along with the furnishings and personal property within. Small bequests were made for friends and domestic staff along with some charitable contributions. In her will, she made no provision for Sean (né John Griffith Lee) whom it was alleged she had adopted. In fact, she only fostered Sean until his 18th birthday, and the will stated that she had "no children, natural or adopted, living or deceased".

Aloe (aloe vera), is a cactus-like plant that grows in hot, dry climates. The useful parts of aloe are the gel and latex.

Aloe gel might help some skin conditions like psoriasis. It also seems to speed up wound healing by improving blood circulation, and might combat certain types of bacteria and fungi. Aloe latex contains chemicals that work as a laxative. Some aloe products are made from the whole crushed leaf, so they contain both gel and latex. People commonly apply aloe gel to the skin for conditions such as sunburn, acne, dandruff, and many others, but there is no good scientific evidence to support these uses. Some people take aloe products by mouth for conditions such as obesity, diabetes, osteoarthritis, and many others, but there is also no good scientific evidence to support these uses.

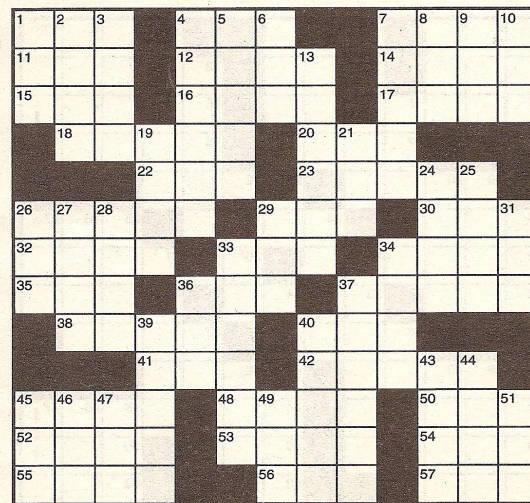
Possibly Effective for

- **Acne.** Applying an aloe gel to the skin in the morning and evening, together with a prescription anti-acne medicine, can improve acne in some children and adults.

WORD 828

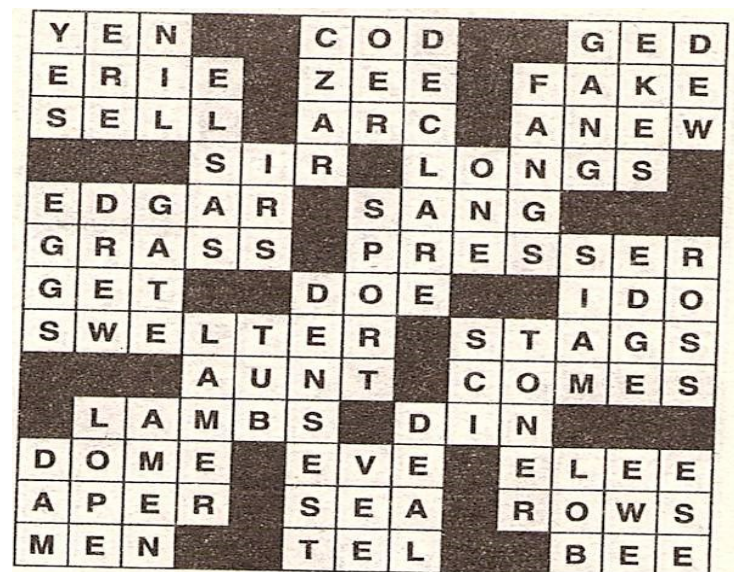
- ACROSS**
- 1. Fake hair
 - 4. Farm mooper
 - 7. Bum
 - 11. Fruity beverage
 - 12. Gad about
 - 14. Musician Clapton
 - 15. Henry VIII's desire
 - 16. Biblical prophet
 - 17. Liability
 - 18. Slip back
 - 20. Slender stick
 - 22. "___ a deal!"
 - 23. Test mark
 - 26. Projects
 - 29. Umbrella spoke
 - 30. "Yakety ___"
 - 32. Actor Klugman
 - 33. Unit of weight
 - 34. TV's Arnaz
 - 35. Chem., e.g.
 - 36. Bitterly ironic
 - 37. Established
 - 38. One Van Halen
 - 40. Writer's tool
 - 41. Stop ___ dime (2 wds.)
 - 42. Smells terrible
 - 45. Big jump
 - 48. Tear unit
 - 50. Scared one's
 - 52. Other
 - 53. Salvage
 - 54. Affirmative
 - 55. "Heidi" setting
 - 56. That gal
 - 57. Espionage expert

- 6. Armed hostility
- 7. Gossip's Hopper
- 8. Miner's quest
- 9. Infant's protection
- 10. Halloween mo.
- 13. No ___ for error
- 19. Nursery color
- 21. Heavenly body
- 24. Coloring agents
- 25. Comfort
- 26. Jammies
- 27. Ornamental edging
- 28. Hydrochloric ___
- 29. Musician Orbison
- 31. Baby goat
- 33. Tire surfaces
- 34. Hamlet, for one
- 36. Succeed
- 37. Doctor's paging device
- 39. Stupid people
- 40. Demonstrate
- 43. Jailers' items
- 44. Filter
- 45. Grassland
- 46. House addition
- 47. Cleo's snake
- 49. "Yippee!"
- 51. Makeup's Mary



Answer on page 57

WORD 827





Service All Makes & Models All Work Guaranteed

Family Owned & Operated Since 1990
Sales-Service-Installation
Financing Available
928-970-2809

Commercial & Residential-ROC# 228663 Licensed/Bonded/Insured



CHECK-UP SPECIAL

Call TODAY to schedule your appointment and mention Coupon Code

\$84.95

REPAIRS

Call TODAY to schedule your appointment and mention Coupon Code

10% OFF

- **Burns.** Applying aloe gel or cream to the skin can reduce healing time in people with first- or second-degree burns.
- **Constipation.** Taking aloe latex by mouth can reduce constipation. But it's banned for use as a laxative by the FDA due to safety concerns.
- **Diabetes.** Taking aloe by mouth can reduce blood sugar and HbA1c in people with type 2 diabetes.
- **Genital herpes.** Applying an aloe extract 0.5% cream three times daily might help heal genital herpes outbreaks.
- **An inflammatory condition that causes rash or sores on the skin or mouth (lichen planus).** Using a mouthwash containing aloe gel three times daily for 12 weeks or applying a gel containing aloe twice daily for 8 weeks can reduce pain from itchy rashes in the mouth.
- **Obesity.** Taking a specific aloe product (Aloe QDM complex, Univera Inc.) twice daily for 8 weeks might reduce body weight and fat mass in overweight or obese people with diabetes or prediabetes.
- **A painful mouth disease that reduces ones ability to open the mouth (oral submucous fibrosis).** Applying aloe gel reduces burning from this condition. But it does not seem to

- **improve the ability to open the mouth or improve cheek and tongue movements.**
- **Scaly, itchy skin (psoriasis).** Applying a cream containing aloe extract 0.5% for 4 weeks seems to reduce skin plaques. But using an aloe gel doesn't seem to have the same effects.
- **Sores in the mouth from injury or rubbing (traumatic oral ulcers).** Applying a gel containing aloe to the gums after getting dental appliances such as braces helps to prevent mouth sores.

Possibly Ineffective for
Skin damage caused by radiation therapy (radiation dermatitis). Applying aloe gel to the skin during and after radiation treatment doesn't reduce skin damage caused by the radiation. But it might delay the appearance of skin damage.

There is interest in using aloe for a number of other purposes, but there isn't enough reliable information to say whether it might be helpful.

Side Effects

When taken by mouth: Aloe gel is possibly safe when used short-term. Aloe gel has been used safely in a dose of 15 mL daily for up to 42 days. Also, a specific gel (Aloe QDM complex Univera

Inc) has been used safely at a dose of about 600 mg daily for up to 8 weeks. Aloe extract is also possibly safe when taken short-term.

Taking aloe latex or aloe whole-leaf extract by mouth is possibly unsafe at any dose. Aloe latex is likely unsafe when taken by mouth in high doses. Aloe latex can cause side effects such as stomach pain. Long-term use of large amounts of aloe latex might cause serious side effects, including kidney and heart problems. Taking aloe latex 1 gram daily can be fatal.

When applied to the skin: Aloe gel is likely safe.

Special Precautions and Warnings

Pregnancy and breast-feeding: Aloe gel and latex are possibly unsafe when taken by mouth. There is a report that aloe was associated with miscarriage. It might also increase the risk for birth defects. Do not take aloe by mouth if you are pregnant or breast-feeding.

Children: Aloe gel is possibly safe when applied to the skin appropriately. Aloe latex and aloe whole leaf extracts are possibly unsafe when taken by mouth in children. Children younger than 12 years old might have stomach pain, cramps, and diarrhea.

Intestinal conditions such as Crohn disease, ulcerative colitis, or obstruction: Do not take aloe latex if you have any of these conditions. Aloe latex is a GI irritant. Products made from whole aloe leaves will contain some aloe latex.

Kidney problems: High doses of aloe latex have been linked to kidney failure and other serious conditions.

Surgery: Aloe might affect blood sugar levels and could interfere with blood sugar control during and after surgery. Stop taking aloe at least 2 weeks before a scheduled surgery.

Interactions ?

Major Interaction

Do not take this combination

Digoxin (Lanoxin) interacts with ALOE

When taken by mouth, aloe latex is a type of laxative called a stimulant laxative. Stimulant laxatives can decrease potassium levels in the body. Low potassium levels can increase the risk of side effects from digoxin.

Moderate Interaction

Be cautious with this combination



Tonto Basin Hardware

928-479-2838

Store Hours

Mon. - Sat. 7:00AM - 5:00PM

Sun. 9:00AM - 4:00PM

NEW!!! Canning Jars & Supplies

Plumbing, Electrical, Fasteners,

Napa Auto Parts, Cooler Parts,

Lawn & Garden Tools,

RV & Marine, Lumber,

Cement, & Block

Key replacement

We now carry

“Leanin-Tree Greeting Cards”

Located behind The Butcher Hook

Medications for diabetes (Antidiabetes drugs) interacts with ALOE

Aloe gel might lower blood sugar levels. Taking aloe along with diabetes medications might cause blood sugar to drop too low. Monitor your blood sugar closely.

Stimulant laxatives interacts with ALOE

Aloe latex is a type of laxative called a stimulant laxative. Stimulant laxatives can cause diarrhea and decrease potassium levels. Taking aloe latex with other stimulant laxatives might cause more diarrhea and very low potassium levels.

Warfarin (Coumadin) interacts with ALOE

Aloe latex is a type of laxative called a stimulant laxative. Stimulant laxatives speed up the bowels and can cause diarrhea in some people. Diarrhea can increase the effects of warfarin and increase the risk of bleeding. If you take warfarin, do not take excessive amounts of aloe latex.

Water pills (Diuretic drugs) interacts with ALOE

Aloe latex is a laxative. Some laxatives can cause diarrhea and decrease potassium levels. “Water pills” can also decrease potassium levels. Taking aloe latex along with “water pills” might make potassium levels drop too low.



Punkin Center Bar
 Restaurant & Lodge
 Old Highway 188
 (928) 479-2627 Bar
 (928) 479-2229 Lodge



Bar Hours
Sun.-Thurs. 9AM-10PM
Friday-Saturday 9AM-1AM
ASK about our drink specials!!!



Kitchen Hours
Sunday-Thursday . 11AM - 8PM
Friday-Saturday. 11AM - 9PM
Please note: As we continue to grow and strive to provide the best customer experience possible, we will no longer be serving breakfast as of Monday, Nov. 29, 2021. Our lunch service will begin at 11AM

We are still offering Take-Out / Curb Side service!

Tuesday-Taco Tuesday
Wednesday-Wing
Friday Fish Fry

Consignement Store-OPEN during bar hours

Weekly Events
Wednesday 8-Ball Tournament @
5.30 pm

Friday 3-Ball Tournament 7PM

Saturday Karaoke 7PM-12:30AM



Tonya's vacation/short term rental house. 2 Bedroom/2 bathroom house for vacation/short term rental 2 night minimum stay. For reservations, call 928-479-2229.

Medications that slow blood clotting (Anticoagulant / Antiplatelet drugs) interacts with ALOE

Aloe might slow blood clotting. Taking aloe along with medications that also slow blood clotting might increase the risk of bruising and bleeding.

Dosing
 Various aloe products have been used by mouth in adults. These include aloe extracts, aloe gels, aloe juices, and raw aloe leaves. Both adults and children have applied various aloe products to the skin, including gels, creams, mouthwashes, and topical solutions. Speak with a healthcare provider to find out what type of product and dose might be best for a specific condition.

TRIVIA

1. What does the "N" in an N95 mask stand for? Nylon, Nasal, National, Non-oil?
2. Which musical instrument was invented by Benjamin Franklin? Banjo, Triangle, Tambourine, Glass armonica?
3. Before becoming Ukraine's President, what was Volodymyr Zelensky's occupation? Dentist, Farmer, Actor, Electrician?
4. Who keeps her Oscar for "The Reader" in her bathroom so guests to make their own acceptance speech in the mirror? Nicole Kidman, Kate Winslet, Meryl Streep, Renée Zellweger?
5. Which item was invented in 1972 by Minnesota Vikings field-goal kicker Fred Cox? Skateboard, Nerf football, Super Soaker, Etch A Sketch?
6. Maria Ann Smith lends her name to the green variety of what kind of fruit that she discovered in the 1860s? Kiwi, Apple, Avocado, Tomato?
7. With a win for Best Makeup, which 1996 comedy can call itself an Academy Award-winning film? Space Jam, Happy Gilmore, The Cable Guy, The Nutty Professor?
8. Which brand of laundry detergent introduced the iconic ad line, "Ring Around The Collar"? All, Tide, Cheer, Wisk?
9. At 7'7", Manute Bol, the tallest player in NBA history, was 5 inches shorter than what feature on the Statue of Liberty? Feet, Right arm, Nose, Index Finger?
10. Which country by far has the world's largest prison population? India, China, Russia, United States?

WHAT'S COOKIN'?

Air Fryer Caramel Chocolate Chip Cookies

Prep 5 MIN

Total 40 MIN

Ingredients

Servings 5

Ingredients

5 cookie dough rounds from 1 package (16 oz) re-frigerated Pillsbury™ Ready to Bake!™ Chocolate Chip Cookie Dough (24 Count)

5 Rolo® chewy caramels wrapped in rich chocolate candy, unwrapped

Steps

1. Line inside of air fryer basket with foil as follows: Turn basket of 3.7-quart air fryer over to shape piece of foil around basket bottom, then remove. Fold edges of foil to make 8-inch round. Place inside bottom of air fryer basket, shiny side up; flatten evenly.
2. Remove 5 cookie dough rounds from package; refrigerate remaining cookie dough rounds for another use. Flatten each cookie dough round in palm of hand to about 1 1/2-inch circle; place on foil in air fryer basket, spacing evenly apart around outer edge.
3. Set air fryer to 300°F; cook 13 to 14 minutes or until edges are set (centers will be soft). Remove basket; place 1 candy in center of each cookie. Let cookies stand in basket 5 minutes. Carefully remove cookies on foil from basket to cooling rack, using spatula to help lift foil out of basket if needed. Cool 15 minutes on foil before removing.

TRIVIA ANSWERS

1. Answer: The N95 respirator is an air-purifying respirator which is certified by the National Institute for Occupational Safety and Health (NIOSH). The various ratings assigned to respirators indicate how well the mask protects against oils and are denoted by the letters N, R, or P. The "N" in an N95 mask stands for "Non-Oil." According to NIOSH, "respirators are rated "N" if they are not resistant to oil, "R" if somewhat resistant to oil, and "P" if strongly resistant to oil." The number "95" indicates that the mask filters out 95% of airborne particles. Thus, an N95 mask is not resistant to oil and filters out 95% of airborne particles.
2. Answer: Of Benjamin Franklin's many achievements, probably the least well-known are his accomplishments in music. In 1761, Franklin designed the glass armonica – the first musical instrument "born" in America. (Not to be

Sudoku 829

1	4	7	9					3
		2					4	
	9			7		2		
9			1	2				
		7	9					4
	2		6				3	
	3					1		
5				4	6	8	9	

Sudoku 828

1	8	2	5	7	9	3	4	6
5	3	4	8	1	6	2	9	7
7	6	9	2	3	4	8	1	5
4	1	8	7	9	2	6	5	3
3	7	6	1	8	5	4	2	9
2	9	5	4	6	3	7	8	1
9	2	1	3	4	7	5	6	8
8	5	7	6	2	1	9	3	4
6	4	3	9	5	8	1	7	2

Flag Display Days

Feb.	President Day	3rd Monday
May	V.E. Day	May 8th
May	Armed Forces Day	3rd Saturday
May	Memorial Day	Last Monday
May	Memorial Day	May 30th (Memorial Service at Cemetery)
June	Flag Day	June 14th
July	Independence Day	July 4th
Sept.	Labor Day	1st Monday
Sept.	V.J. Day	Sept. 2 (Formal Surrender)
Sept.	POW-MIA Day	3rd Friday
Nov.	Veterans Day	Nov. 11th
Dec.	Pearl Harbor Day	Dec. 7th



Desert Sunset Massage Therapy

For More Information and Appointment,

Call: **480-540-0991**

Monique Cline, LMT #MT-09546

As Always.....



- ◇ 10 % off sessions for First Responders, Active Military, Veterans
- △ New Clients receive 10% off the first session
- △ Buy a package of 5 massage sessions and receive 10% off (Cannot be combined with other offers)
- ◇ Massage Cupping Therapy is available along with the Hot Stones
- △ Hot Stone Therapy integrated into every massage session.
- △ By Appointment Only

Now Offering Payment with Your Debit/Credit Card!

Relax Restore Rejuvenate

M

confused with a mouth harmonica.) Frankin called it the armonica, based on the Italian word armonia, which means "harmony". This new instrument became very popular, and music written expressly for the glass armonica was composed by such legends as Mozart and Beethoven. The popularity of the instrument faded early in the nineteenth century, but it is still played occasionally today.

3. **Answer: Volodymyr Zelenskyy was elected president of Ukraine in "a landslide victory" in 2019. Before he entered politics, Zelensky worked as a comedian and actor, starring in various romantic comedies. He recently starred as a high school teacher who becomes president in the Ukrainian political satire series, "Servant of the People." The series made Zelensky a star and**

served as a springboard for his real-life presidential candidacy. Within a month of the show's finale, the actor-turned politician was elected president of Ukraine. Zelensky's resolve and leadership during the Russian invasion of Ukraine has won him high praise from around the world.

4. **Answer: With a total of seven nominations, Kate Winslet finally snagged an Academy Award for Best Actress for her performance in 2009's "The Reader." Winslet found the perfect spot to keep her Oscar: the bathroom. Winslet stated that she wants her guests to be able to give their own acceptance speeches in front of the mirror without being embarrassed. "The whole point is for everybody to pick it up and go, "I'd like to thank my son and my dad" — and you can always tell when someone has, because they're in there a little bit longer after they flushed."**
5. **Answer: Nerf football has been a mainstay of gridiron challenges for kids of all ages since its introduction in 1972. You can thank Fred Cox for that. The former Minnesota Vikings field-goal kicker, invented the smaller and softer football that was safer for kids to play with. The inventor was an All-Pro kicker with the Minnesota Vikings from 1963 to 1977, and led the NFL in scoring twice. When Cox retired, he was the league's second all-time leading scorer, and still holds the record for most points scored by a Vikings player. Cox took the idea to Parker Brothers, and the rest, as they say, is history.**
6. **Answer: Granny Smith apples are named after Maria Ann Smith. They were discovered in Australia in the 1860's, as a chance seedling in the compost pile on the orchard of Maria Ann Smith. Smith was a prominent figure in the district, earning the nickname "Granny" Smith in her advanced years. Granny Smith apples were first introduced commercially to the the United States in the 1970's. Granny Smith Apples are known for their bright green skin color and are tart and crisp. The Granny Smith is the third most popular apple in the United States.**
7. **Eddie Murphy. It's a remake of the 1963 film of the same name, which starred Jerry Lewis, which itself was a parody of Robert Louis Stevenson's 1886 novella Strange Case of Dr Jekyll and Mr Hyde. In the film, Eddie Murphy dons a fat suit to play the titular university professor (and six other characters) who tests an experimental weight loss drug that he's invented for himself. The film received positive reviews, with critics particularly praising Eddie Murphy's makeup, which took three hours to apply each day. The film won Best Makeup at the 69th Academy Awards.**

Jake's Corner General Store

We offer the following:

Lottery

Gift Shop - Groceries - Tobacco Products

Great Jerky - Snacks - Ice Cream - Beer - Wine

Camping-Fishing Supplies - Bait - Firewood -

Friendly Service

Now Serving! at *Jake's Corner General Store*

Fresh Hot Pizza & Deli Sandwiches

Eat Here or Take it To Go

Open 7 days a week

Come See Us & Check it Out

Or Go and Like Our NEW Facebook Page

Hours: Open everyday 5:00 A.M. - 7:00 P.M.

CALL FOR OUR DAILY DINNER SPECIALS!!!

(928) 474-4675

NEW !!



AUTHORIZED DEALER



186 E. Stephens Way Tonto Basin, AZ 85553



Open Monday and Wednesday
8am - 4pm

Call to Schedule an
Appointment:
(928) 479- 2871



Douglas J. Campbell, M.D.



Ryan Beau Bradley, PA-C



District 2 Gila County Supervisor
 Tim R Humphrey

Tonto Basin Community Meeting,
MAY. 3, 2022 at 5 PM,
Tonto Basin Chamber
State Route 188 & Rattlesnake,
Tonto Basin,

Updates, information, and upcoming events will
 be discussed at this meeting.

For more information call:
 District 2 Supervisor Tim R. Humphrey
 (928) 425-3231 or toll free 800-304-4452

8. **Answer: Wisk was launched in 1956 as the first liquid laundry detergent. The brand was widely known for its popular "Ring Around The Collar" ad campaign, which debuted in 1968 and highlighted the product's ability to help treat difficult stains on shirt collars. Early commercials featured housewives harassed by an unseen chorus of schoolchildren chanting "ring around the collar," then noticing the stains on their husband's shirts. The campaign received significant criticism decades later for being misogynist, with the implication that it was the fault of wives for letting their husbands leave home with dirty collars.**
9. **Answer: Standing 305 feet tall including its pedestal, the Statue of Liberty represents a woman holding a torch in her raised right hand and a tablet bearing the adoption date of the Declaration of Independence (July 4, 1776) in her left. The statue's nose measures 4 feet 6 inches long, her mouth is 3 feet wide, and her right arm stretched to the sky is 42 feet long. Lady Liberty has some seriously large digits too. Her hands are about 16.5 feet long, and her index fingers are 8 feet long. Oh, and her feet are 25 feet long, making her shoe size 879!**
10. **Answer: With 1.8 million prisoners, the United States has the world's largest prison population. While the U.S. represents only five percent of the world's population, it houses around 25 percent of the world's prisoners. According to a U.S. Department of Justice report, over 6.7 million people are under correction**

control which includes not only incarceration but also probation and parole. That means roughly 1 in every 49 Americans are under some sort of criminal justice system control. Men make up 90% of the prison and local jail population, and they have an imprisonment rate 14 times higher than the rate for women.

A WINTER FRIEND
AND THEN IT IS WINTER

You know time has a way of moving quickly and catching you unaware of the passing years. It seems like yesterday that I was young, just married, and embarking on my new life with my mate. Yet in a way, it seems like eons ago, and I wonder where all those years went.

I know that I lived them all. I have glimpses of how it was back then and of all my hopes and dreams. But, here it is... the winter of my life, and it catches me by surprise... How did I get here so fast? Where did the years go and where did my youth go? I remember well seeing older people through the years and thinking that those "older people" were years away from me and that winter was so far off that I could not fathom it or imagine fully what it would be like.

But, here it is...my friends are retired and getting grey... they move slower and I see an older person in myself now. Some are in better and some worse shape than me... but, I see the great change... Not like the ones that I remember who were young and vibrant...but, like me, their age is beginning to show and we are now those older folks that we used to see and never thought we'd be.

Each day now, I find that just getting a shower is a real target for the day! And taking a nap is not a treat anymore... it's mandatory! Cause if I don't on my own free will... I just fall asleep where I sit!

And so... now I enter this new season of my life unprepared for all the aches and pains and the loss of strength and ability to go and do things that I wish I had done but never did!! But, at least I know, that though the winter has come, and I'm not sure how long it will last... this I know, that when it's over on this earth... it's over. A new adventure will begin!

Yes, I have regrets. There are things I wish I hadn't done... things I should have done, but indeed, there are also many things I'm happy to have done. It's all in a lifetime.

So, if you're not in your winter yet... let me remind you, that it will be here faster than you think. So, whatever you would like to accomplish in your life, please do it quickly! Don't put things off too long!! Life goes by quickly. So, do what you can TODAY, as you can never be sure whether this is your winter or not!

You have no promise that you will see all the seasons of your life... so, LIVE FOR TODAY and say all the things that you want your loved ones to remember.. and hope that they appreciate and love you for all the things that you have done for them in all the years past!

"Life" is a GIFT to you. The way you live your life is your gift to those who come after. Make it a fantastic one.

Remember: "It is Health that is real Wealth and not pieces of gold and silver."

~Your kids are becoming you.....but your grandchildren are perfect!

~Going out is good.. coming home is even better!

~You forget names... but it's OK, because other people forgot they even knew you!!!

~You realize you're never going to be really good at anything.... especially golf.

~The things you used to care to do, you no longer care to do, but you really do care that you don't care to do them anymore.

~You sleep better on a lounge chair with the TV blaring than in bed. It's called "pre-sleep."

~You miss the days when everything worked with just an "ON" and "OFF" switch..

~You tend to use more 4 letter words ... "what?"..."when?"...???

~Now that you can afford expensive jewelry, it's not safe to wear it anywhere.

~You notice everything they sell in stores is "sleeveless?!"

~What used to be freckles are now liver spots.

~Everybody whispers.

~You have 3 sizes of clothes in your closet.... 2 of which you will never wear.

~But "Old" is good in some things: Old Songs, Old movies ...

and best of all, our dear ...OLD FRIENDS!!!

Stay well, "OLD FRIEND!"

The cashier told me "Strip Down Facing Me".

By the time I realized they meant the debit card, it was too late.

NORTH MECHANICAL

Air Conditioning • Heating • Refrigeration

906 S. McLean Road, Payson, AZ 85541 - LICENSED, BONDED, INSURED

"PROVIDING SUPERIOR PRODUCTS, SERVICES, AND SOLUTIONS TO AZ RESIDENTS SINCE 2004"

Whole-Home Comfort Specialists

VETERAN OWNED, SERVING THE RIM COUNTRY SINCE 2004



PROFESSIONAL HVAC DESIGN, INSTALLATION,
AND REPAIR SERVICES—FREE ESTIMATES



WE SERVICE ALL BRANDS



www.UpNorthAir.com

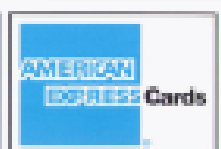
Spring Savings...

- \$69.99** A/C Tune-Up or Evap Start-Up*
- \$50 Off** Bacteria Killing UV Light Install*
- \$50 Off** Whole House Air Duct Cleaning*
- \$1700** Cash back on select Lennox Systems*

*some restrictions & travel charges may apply

0% Financing Available on New Systems!

928-468-9400



MEETINGS & EVENTS

Important Numbers for Tonto Basin, For Situation updates & Non-Emergency messaging, call the Gila County HOT-LINE

(928) 402-8888 or toll free 800-304-4452.

EMERGENCY MANAGEMENT:

emsdept@co.gila,az,us

Emergency: 9-1-1

Road Conditions: 5-1-1

CHAMBER OF COMMERCE meet the 3rd Thursday of every month at 9:30 A.M. at the Chamber building. (NO meetings June, July, or August.)

www.tontobasinchamber.org

FORT RENO VFW POST 8807 meets 4th Saturday of the month 9 AM

GILA COUNTY SUPERVISOR/COMMUNITY MTG FOR TONTO BASIN The 1st Tuesday of the month at 5PM held at the Tonto Basin Chamber bldg

SIERRA ANCHO LADY CARD PLAYERS: come join us to play/learn **CRAZY CANASTA** Wednesday 9AM-3PM at the Chamber of Commerce Building - Break for lunch @ 11:30AM

PUNKIN CENTER BAR'S FLEA MARKET IS HELD every other week on **SATURDAY** Stop by Punkin Center to sign up for your **"FREE"** Space.

TONTO Basin Post Office
(928) 479-2210

TRASH/ APPLIANCES/JUNK

PRICE \$1.00 FOR 1ST 1,000 POUNDS!!!

Regular price over 1,000

2nd Saturday every month.

Buckhead Mesa Landfill, Payson, AZ:

North from Payson on Highway 87, across from the Natural Bridge, mile post 263. One mile east to site.

1321 E. Buckhead Mesa Landfill Rd.

Summer and Winter Hours - Monday through Saturday

8:00am to 4:00pm. Closed Sundays and Holidays

(928) 476-3350

THRU 4TH GRADE MOTHER'S DAY SHOPPING FOR FREE. IF YOU WOULD LIKE TO VOLUNTEER TO HELP OR TO WRAP PRESENTS PLEASE CONTACT CHERI AT 602-793-5028 OR LINDA AT 602-999-5284.



EYE EXAMS ON APRIL 23RD. APPOINTMENTS ARE FULL.

APRIL 30TH IS HIGHWAY CLEAN UP DAY! CHECK IN AT THE COMMUNITY CENTER AT 7AM FOR YOUR SAFETY VEST AND TRASH BAGS AND PICK UP STICKS IF YOU NEED THEM, OR BRING YOUR OWN. COFFEE AND DONUTS WILL BE AVAILABLE FOR VOLUNTEERS.

TONTO BASIN CEMETERY CLEAN UP DAY IS MAY 7TH. MEET AT THE CEMETERY AT 7AM. BRING GLOVES, TOOLS, WATER OR GATORADE AND FRIENDS!

BINGO'S LAST DAY BEFORE SUMMER BREAK IS MAY 26TH. FREE ICE CREAM SOCIAL FOR ALL BINGO PLAYERS THAT NIGHT. COME JOIN US! DOORS OPEN AT 5:30. CHECK IN BY 6:15. GAME STARTS PROMPTLY AT 6:30.

KIWANIS IS BUSY WITH SCHOOL PLANS AT THIS TIME OF YEAR AND IF YOU WOULD LIKE TO VOLUNTEER FOR KIWANIS TO HELP WITH EVENTS PLEASE CONTACT CHERI AT 602-793-5028 OR ATTEND A MEETING WEDNESDAYS AT 9:00 AM IN THE COMMUNITY CENTER NEXT TO THE THRIFT STORE. OTHER UPCOMING EVENTS ARE TEACHER APPRECIATION WEEK, AND 8TH GRADE GRADUATION.



TONTO BASIN LIBRARY

Phone: (928) 479-2355

Hours: Mon. - Fri. 8:00A.M.- 4 P.M.

Also offers other services: FAX, Copies, & Public Computer/printer for nominal fee.

Russell Gulch Landfill, Globe, AZ:

Between Globe and Miami, close to Little Acres. West on US-60 on Russell Road, 1.6 Mile to site

5891 E. Hope Lane

Winter Hours - Monday through Saturday 8:00 am to

4:00 pm. Closed Sundays and Holidays

Summer Hours - Monday through Saturday 6:00 am to

4:00 pm. Closed Sundays and Holidays

Romaine Heap, REALTOR®
 928-978-9117
 romaine@bishoprealty.com



“We Offer Notary Services”



COLDWELL BANKER
BISHOP REALTY
 THE BEST MOVE YOU WILL EVER MAKE!

45596 Hwy. 188, Suite A., Tonto Basin
 Office: (928) 479-3324

coldwellbanker.com



Lacey Whitehead, REALTOR®
 928-812-5945
 lacey@bishoprealty.com



448 N Day Place: The perfect hideaway! This newly remodeled 1984 24x48 High Chaparral man. home located on the west side of Tonto Creek features a split floorplan, a 3 year old metal roof, front covered Trex Deck and back covered deck with a mountain view! Many updates—call for details! 12x36 covered parking and a private well. **\$185,000 MLS#85445**

PENDING



140 Hohokam Lane: This well kept 2007 Fleetwood 26x48 Manufactured Home features 3 bedroom and 2 bathrooms, Large garage, RV hookup and plenty of room on the .58 acres to park all of your toys. Beautiful fruit trees (2 peach, pomegranate, fig,, plum, and apricot) The 360 degree views show all the surrounding mountains. Only 7 miles from Roosevelt Lake there is plenty to do all year around. **\$280,000 MLS#85699**

PENDING

WE NEED YOUR LISTINGS, WE'VE SOLD ALL OF OURS!!

Information is deemed to be reliable, but is not guaranteed.



Rambo Realty & Investment
Margaret Rambo, Broker 928-978-0260
email: margaret@ramborealty.com
Curt Rambo, JR, 623-570-6221 Kari Rambo, 602-565-5701
Email: curt.rambo@gmail.com Email: Kari@ramborealty.com



Go to: www.ramborealty.com for ALL Local MLS LISTING Or just Google the property address for all details!

LOTS-ACREAGE

RR 3GW Elmer Ln. One of a kind acreage. This property features spectacular highest views in Tonto Basin. Borders TNF on west & south sides. 4.42 acres. Waterline & power conduit at property line \$289,000. MLS84203

TBD N HWY 188 1.81 Acre Prime Hwy frontage. West Side of Hwy 188 near Butcherhook Complex. Paved 40 ft turnout Zoned GU \$149,000 MLS85942

RR5N W Canyon Ridge Dr. Unique Mountaintop setting! Views from this private awesome home site! Borders TNF on South & West boundaries. Site built only. 1500 sq ft min & matching garage. \$229,000 MLS84204

PENDING-RR65 W Four Peaks Road Great Views on this .51 acres in Cul-de-Dac. Septic sys installed. Paved road \$45,000. MLS8413

SOLD-TBD N Cline Blvd 1.6 acre, great location. 3 miles from Roosevelt Lake at Indian Point. Property has electric meter, 2 septic sys, partial chain link fencing. \$154,000 MLS85940

SOLD-RR115 W Buckshot Ln. Prime location, Double Corner Lot on HWY188 & Buckshot. .94 acre w/181 ft of HWY frontage. 1500 gallon septic 3/4' water meter, electric avail. \$189,000 MLS85807

PENDING-RR Parcel #7D7 ROS #5361 S Ewing Trl 1.4 acres, Borders TNF. Power & water aval. \$94,900 ea, MLS85745

SOLD-RR44247 N HWY 188 Sen Hardt HWY Close to Roosevelt Lake! One of a kind! 5.89 acre w/septic, well & elect in. water company line at West Boundary \$229,000 MLS85727

PENDING-RR5Q W Raven Cliff. Take a look at this .70 ac parcel! Great Views! Build your lake house here! Water & Power to lot line. \$74,900 MLS84658

PENDING-RR83 S Moose Point one of a kind View! .96 ac Lot! RV okay! Elect & water at lot line \$69,900 MLS84190

SOLD-RR LOT 12 Walnut Springs Blvd Beautiful View Lot. .23 acres w/septic installed. Maintained paved road. Build your site built home or MH here. Mins. Away from Roosevelt Lake \$36,900 MLS85924

MANUFACTURED-SITE BUILT HOMES

RR116 S. Ewing Trl Immaculate total elec 1680 sq ft 2004 Cavco 3bd/2ba. 1.01 ac w/split floor plan, Panoramic views! Lg bedrooms w/ oversize master bath. Front & rear cov'd decks. Det steel dble carport. 2 storage shed. Extensive granite desert landscaping. Shown by appt only. Call today! \$349,700 MLS86480

RR190 N Desert Rose Dr. Room to Roam! Animals Welcome! 1.25 ac w/private well, 1998 Schults MH, 3bd/2ba, New roof, fresh paint interior & exterior, Lg covered rear patio split floor plan w/eat in kitchen island, stainless steel al., A must see. \$365,000 MLS86299

RR176 E Shelby Ln. Private setting on 1.36 ac 1,896 sq ft 3bd/2ba 1996 Redman MH., w/metal roof. Front cov'd patio w/hot tub, storage w, elec., ATV carport. Shared well, Backyard fenced, stone insulated garden shed, Chicken coop. Quiet living 10 min from Roosevelt Lake. \$350,000. MLS86300

RR 45130 N AZ HWY 188 Prime location! Corner lot. .69 acre. All fenced 12x35 quality park model 2bd.2ba w/lg add on 901 sq ft, w/attached 24x28 attached gar. \$240,000 MLS

RR 302 S Mulberry Dr. .27 ac, 1,560 Frontier 3bd, 2ba. Totally remodeled & upgraded. All appl incl'd, full length front and rear patios, Finished insulated det'd 24x30 (720 sq ft) garg + oversized steel double carport, fenced back yard. \$285,000 MLS86031

PENDING-RR189 E Lone Circle Perfect Lake House! .24 ac 1,210 sq ft Site built home, 3bd/3ba. Quality construction w/loads of custom features. All appls included. Outdoor shower, shaded patio bar & kitchen, putting green, privacy fencing, lg cov'd parking + front double carport. \$329,000 MLS86298

SOLD-RR573 N. Cline Blvd You can see "Forever". Spectacular Panoramic Views! 3.18 acres High on a Hill, bordering TNF. Paved private driveway. 2004 1,300 sq ft Cavco MH., 2 bd/1 ba. Call Today! \$350,000. MLS85936

SOLD RR198 Nip n Tuck Shown by Appt Only! Privacy and panoramic Views! 2017 Cavco 2bd/2ba, cov'd patios, fence yard and sturdy storage shed. A Must See!

SOLD-RR246 Walnut Springs Blvd Fantastic Views from this secluded home .84 acre, 1,120 sq ft 2003 Cavco 3bd/2ba. 805 sq ft tall gar. Ready for your upgrades! Sold as is! \$225,000 MLS85928