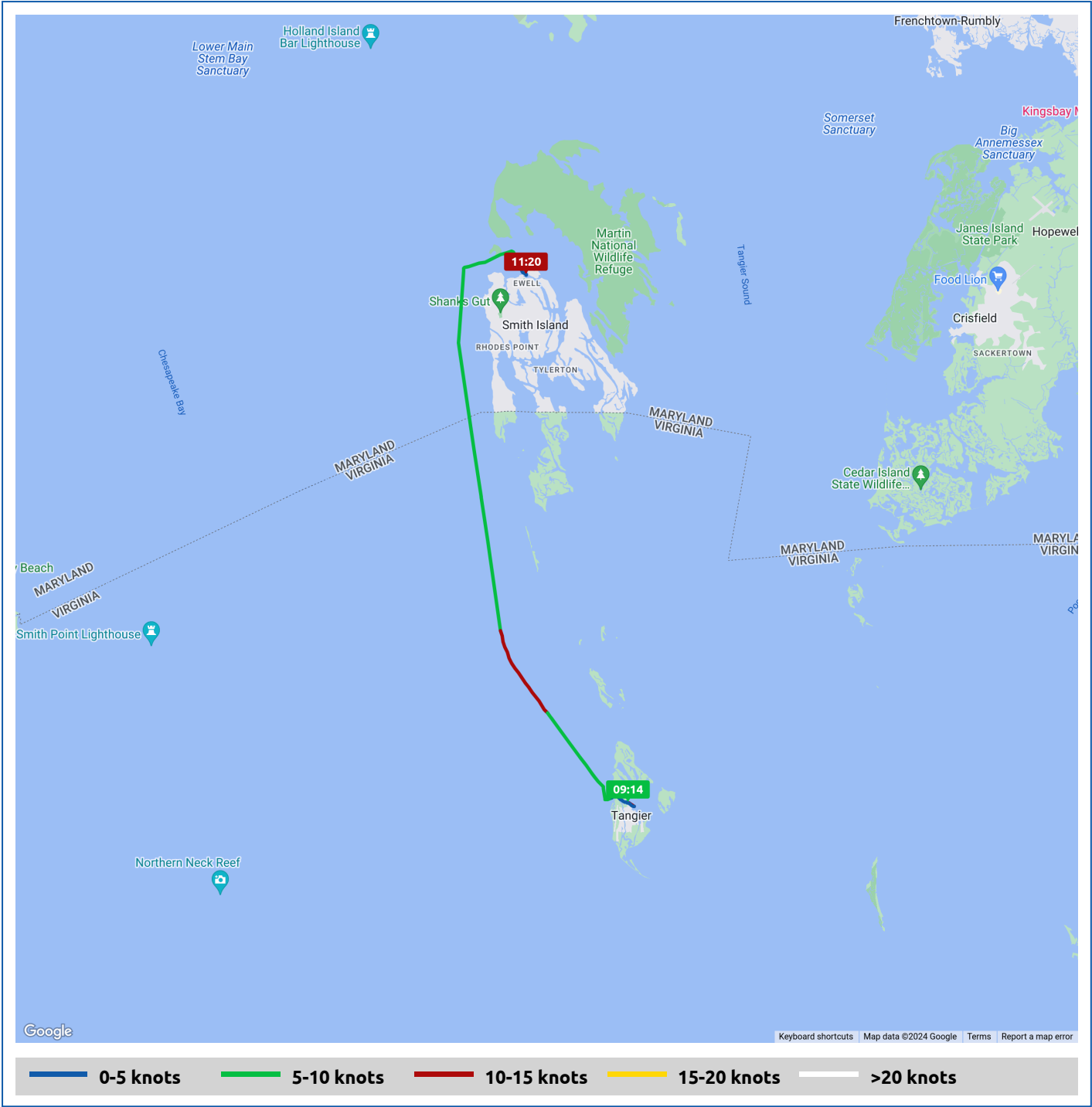










Voyages	Underway (hours)	Duration (hours)	Distance (mi)	Average Speed (knots)	Max Speed (knots)
1	2:06	2:22	15.0	6.2	14.3





Voyage	Skipper	Passengers	Commenced	Completed
James Parks Marine to 37° 59.79' N, 76° 1.94' W	Roxie & Jerry G		09:13	11:36

<div></div> <div>Weather on departure 66.0°F, Wind 10kn SSW</div>	<div></div> <div>Weather on arrival 68.8°F, Wind 10kn S</div>
---	---

Voyage Log		Time	From Start		Interval
			Duration (hours)	Distance (mi)	Avg Speed (knots)
Started voyage at 37° 49.80' N, 75° 59.56' W		09:14	0:00		
	66.0°F, Wind 10kn SSW	09:14	0:00		
37° 54.96' N, 76° 2.98' W		10:14	1:00	7.5	6.4
	66.3°F, Wind 10kn S	10:14	1:00		
37° 59.90' N, 76° 2.12' W		11:15	2:01	14.9	6.4
	68.0°F, Wind 10kn S	11:15	2:01		
Stopped voyage at 37° 59.79' N, 76° 1.94' W		11:36	2:22	15.1	0.5
	68.8°F, Wind 10kn S	11:36	2:22		