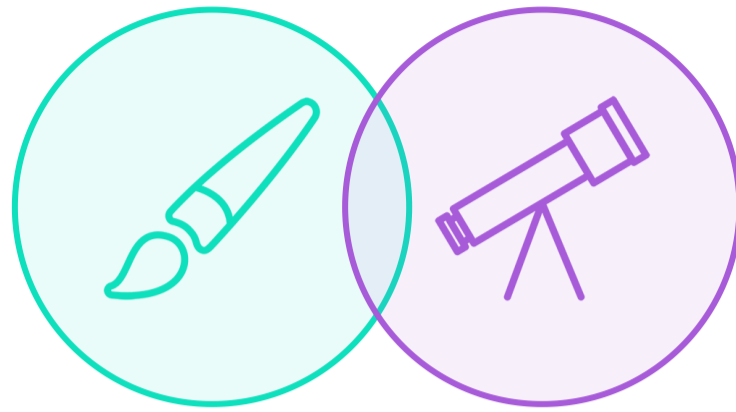
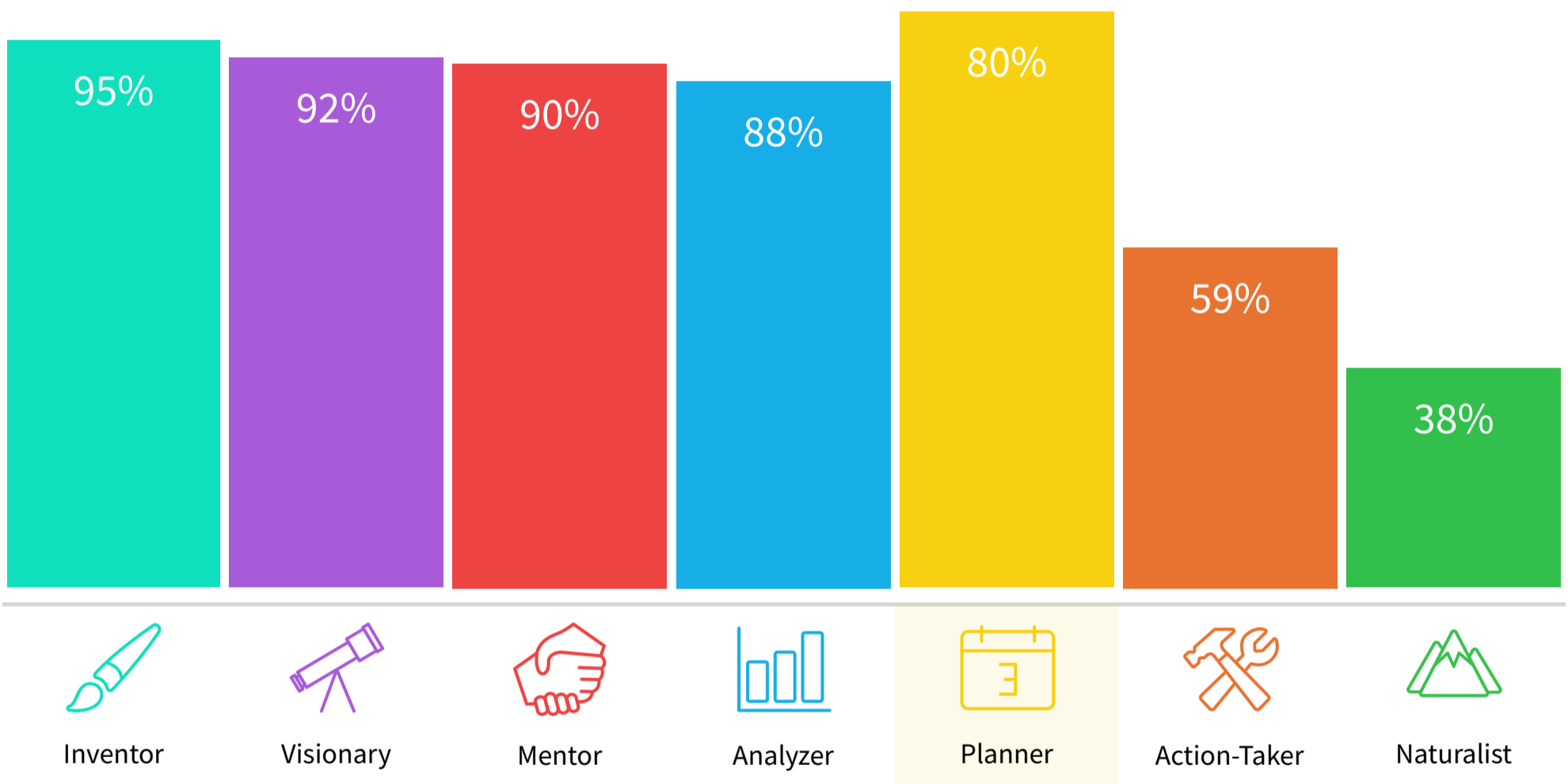


Careers Assessment Results




Inventor/Visionary

You are sociable by nature with an eye for the eclectic. You enjoy being around other people and are especially attracted to the art world. The lead in the play, the artistic mind power behind the big idea or the singer in the band, you always shine. Others are drawn to you and admire you. You thrive out in the world and appreciate being surrounded by other people. The only exception to this is when you are working on something artistic, where you can find yourself completely engrossed in a project for hours at a time.



Planners ...are the detail people. They are methodical, precise, and detail-oriented. Planners create systems to follow, and enjoy working with data, detail, words and numbers. Great at manipulating data, they love procedure and routine. Often found in office settings, they excel at completing detailed work in an organized manner.

 Prefers Working with Others - comfortable and productive when working with others 100%

Whimsical - values the playful and capricious aspects of an activity 100%



Competitive - driven by a desire to outdo others

100%



Unconventional - unconcerned or dismissing of what is generally held to be acceptable

100%



Deliberate - careful and slow in deciding and acting

100%



Empathic - able to "walk in someone else's shoes" and experience their inner emotional state

100%



Creative - original, artistic and imaginative

100%



Leader - functions best when directing others

100%

Show More

Complements

You work well with Inventors who share your creative mind and your ability to work in a sometimes chaotic work environment. When you get together with your Inventor colleagues, the ideas start to flow, and you feel inspired by putting your minds together. You also appreciate working with your Planner colleagues because as the person who brings the 'big ideas,' you rely on someone to take care of and remember the details. You and your Planner coworkers make the perfect team, working in tandem to cover all aspects of a project.

Conflicts

As a natural leader and an easygoing person, you are fortunate in that you work well with all types of colleagues. However, you may find that if there are too many other Visionaries on your team, you get the feeling that there are 'too many cooks in the kitchen.' This can be frustrating for you and those on your team as they may be confused about who to follow. You may find that you have to adjust your leadership style a bit for your Action-Taker colleagues who prefer solitary work. You are a team-and-people-oriented person, and it can be hard to remember that there are those types of people who work best alone.

Best Work Environments

- Gives you authority over your creative process
- Is fast-paced
- Offers a combination of autonomy and teamwork
- Sustains open-mindedness

Retake Careers Assessment