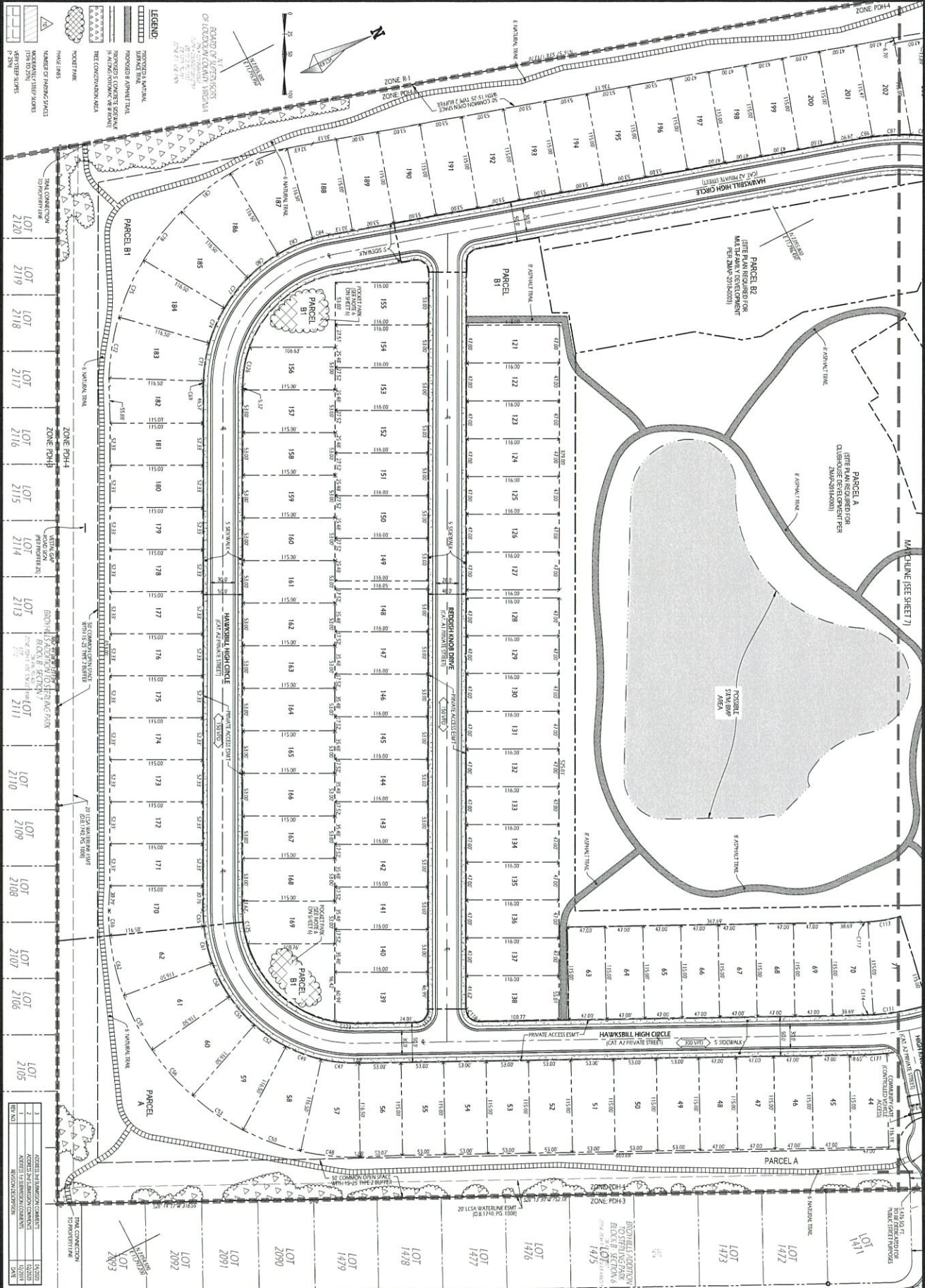


NO.	DATE	DESCRIPTION
1	7/10/2019	PRELIMINARY PLAT
2	7/10/2019	REVISIONS
3	7/10/2019	REVISIONS
4	7/10/2019	REVISIONS
5	7/10/2019	REVISIONS
6	7/10/2019	REVISIONS
7	7/10/2019	REVISIONS
8	7/10/2019	REVISIONS
9	7/10/2019	REVISIONS
10	7/10/2019	REVISIONS

**PRELIMINARY PLAT**  
**MONTEBELLO FARM**  
**PRELIMINARY PLAT OF SUBDIVISION**

STURGEON ELECTOR DISTRICT    LOUDOUN COUNTY, VIRGINIA    COUNTY NO. SMP, 2019-0008

**SMITH**  
**ENGINEERING**



NO. 1	2019	1/27/20	10:10:10 AM
NO. 2	2019	1/27/20	10:10:10 AM
NO. 3	2019	1/27/20	10:10:10 AM
NO. 4	2019	1/27/20	10:10:10 AM
NO. 5	2019	1/27/20	10:10:10 AM
NO. 6	2019	1/27/20	10:10:10 AM
NO. 7	2019	1/27/20	10:10:10 AM
NO. 8	2019	1/27/20	10:10:10 AM
NO. 9	2019	1/27/20	10:10:10 AM
NO. 10	2019	1/27/20	10:10:10 AM

**SMITH ENGINEERING**  
 1000 W. MARKET STREET, SUITE 200  
 LOUDOUN COUNTY, VA 20134  
 (703) 261-8800  
 www.smith-engineering.com

PREPARED BY: SMITH ENGINEERING  
 CHECKED BY: SMITH ENGINEERING  
 DATE: 1/27/20

PRELIMINARY PLAT  
**MONTEBELLO FARM**  
 PRELIMINARY PLAT OF SUBDIVISION

STERLING ELECTION DISTRICT    LOUDOUN COUNTY, VIRGINIA    COUNTY NO. 58PL 2019 0008

**SMITH ENGINEERING**