



Australian Solar Enterprises' approach to the design and delivery of the Tumuruu project is underpinned by environmental sustainability, active community engagement, and the desire to leave a long-lasting positive legacy for all our stakeholders.

We would appreciate your time to help us better understand community feedback.



SCAN ME

Email:

admin@tumuruusolar.com.au

Project website:

www.tumuruusolar.com.au

Tumuruu Newsletter

Vol 6 | March 2024

Welcome to the 4th edition of the Tumuruu newsletter



Australian Solar Enterprises (ASE) is developing the Tumuruu Solar project in Blackbutt on a private property on Bowman Road.

Project Activity

The Tumuruu project received development approval from Council in November 2023. This approval was received after an extensive process of studies, assessments, community engagement and feedback.

There are still several steps required prior to any construction activity and ASE continue the development process. It is anticipated construction would start in 2025.

At any time if you have questions or would like to register interest in being involved, please do reach out on the contact details provided and someone from the team will be in touch.

Project Information

The project has been approved by Council and requires the following key Conditions of approval to be met:

- The establishment of a buffer setback on the outer edge of the property has been amended which now includes a minimum of 75m distance between a property boundary and panels (northern and eastern boundaries, southern boundary remains at 190m+). The 75m comprises (when moving from a property boundary towards the panels)
 - 10m of firebreak, 10m of landscaping buffer where applied, up to 40m of grassland, fence line, and 10 to 15m of access before the edge of the panels
 - The final project layout is on the next page
- Stormwater flows were modelled as a 'worst case' and assumed 20% increase, with provisions for detention added to the project plan to ensure a 'no worsening'. All works are subject to detailed engineering and will comply with Council's Service and Works Code.
- Preparation of Construction Management Plan and Operational Environmental Management Plan that demonstrates the construction and operation of the project will meet all local, state and federal legislated requirements as it applies to all hazards (such as bushfire), noise, dust, hours of operation, stormwater, waste management and so forth.
- Noise from the construction phase of the development and operations must not exceed the most stringent criterion for day & night-time hours
- No heavy vehicle movements are permitted on Bowman Road between the hours of 7am to 9am, and 2pm to 4pm on school days.

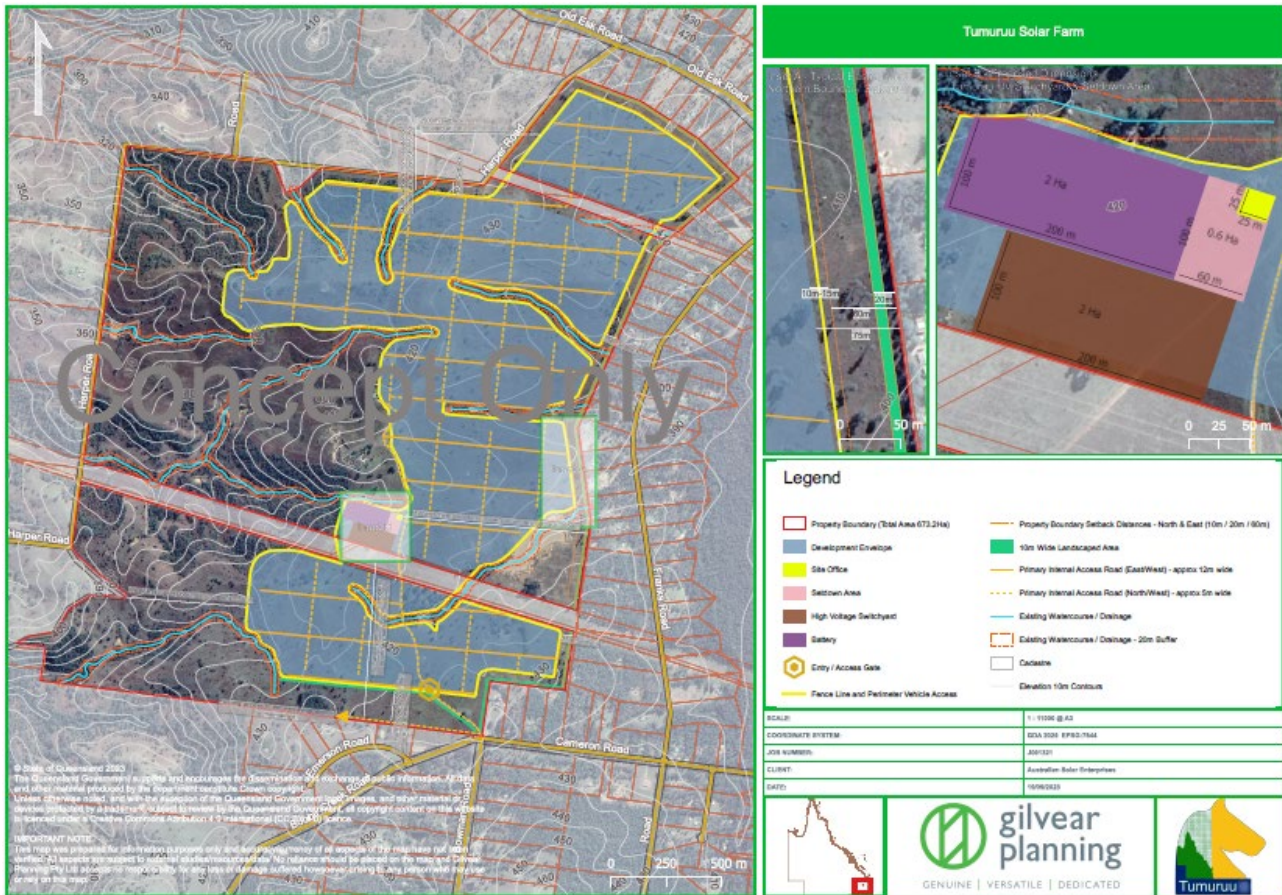
The full conditioned approval can be found here and includes details of all conditions set by Council:

<https://www.southburnett.qld.gov.au/downloads/file/7669/confirmed-minutes-ordinary-council-meeting-24-january-2024>

FAQ have moved to the Tumuruu website (<https://tumuruusolar.com.au/faqs>)

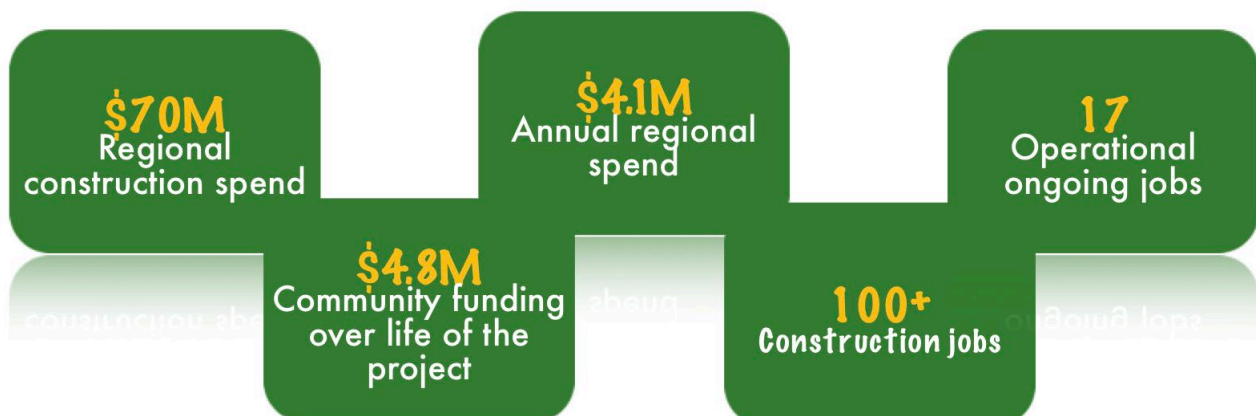
If you have any questions not answered here or on the website, please reach out.

Project Layout



Facts & Figures

Local Economic Benefit



ASE is committed to maximising local economic benefit and actively working towards increasing regional opportunities.

Register for updates

To register for project updates or to set up a time to discuss the project further.

Email: admin@tumuruusolar.com.au

Project website: www.tumuruusolar.com.au

Employment opportunities

Do you enjoy outdoor work?

Can you or are you willing to learn how to use powered hand tools?

If you are school age, we will have opportunities during school holiday periods as well!

If the above sounds like you, register your interest with the QR code and help Queensland reach its energy target!

SCAN THE
QR CODE



SCAN ME

Supplier opportunities

Construction

Fencing/Security
Earthworks
Landscaping
Catering
Accommodation
Cleaning

Operations

Fencing/Security
Earthworks
Landscaping
Maintenance

30+ year
opportunity

SCAN THE
QR CODE



SCAN ME

This project is an independent solar project by ASE and is separate to the Powerlink transmission lines project and consultation.