

Tumuruu Solar Farm Development

Australian Solar Enterprises is proposing the Tumuruu Solar Farm development, located at 341 Bowman Road, Taromeo. This 250-275MW solar farm will make use of existing transmission lines and enable local benefits for the Blackbutt community.

Creating a legacy

Australian Solar Enterprises is committed to delivering a high-quality solar farm development that makes a positive contribution to the surrounding area. We understand that development can create impacts on surrounding areas, and we want to work with the community to ensure impacts are mitigated wherever possible, and benefits are shared among the community.

Australian Solar Enterprises is working with Plan C, a community development and engagement company, to bring the community on the development process. This is the first stage of ongoing engagement.

Local spending

Around ten percent of the project cost will be injected into the local community during the year-long construction period, through catering, accommodation and supplies.

Local jobs

The construction period will support approx. 80 roles over twelve months (subject to construction timeframe confirmation). Many of these labour positions will be sourced locally. Once built, the solar farm will support 6-10 full time operational roles.

Road safety

Investigations are being undertaken to ensure that access to the site is safe and sufficient to accommodate the expected vehicles.



Community benefits

A Community Benefit Fund will be established for the life of the solar farm. This fund will provide grants to projects and initiatives that benefit the community. The first round of grant applications are expected to open in late 2025.

The design

Our approach to the design and delivery of the solar farm is underpinned by environmental sustainability and the desire to leave a long-lasting positive legacy for regional communities.

There is a big difference between solar farm systems. Unlike many other solar farms, the technology that will be used has the benefit of:

- A lightweight and compact substructure which means an ultra-low profile (less than one metre at the highest point)
- Less ground disturbance and minimal heavy machinery for installation
- 72% less CO₂ compared to conventional substructures
- Fewer materials, which will reduce supply, logistics and installation time by up to 40% compared to conventional alternatives
- No audible noise when up and running and maintenance can be carried out with hand drills (no heavy machinery required)

The design intention is to reduce visual impacts to surrounding residents. Vegetated buffers will ensure that neighbouring residents have a pleasant outlook.

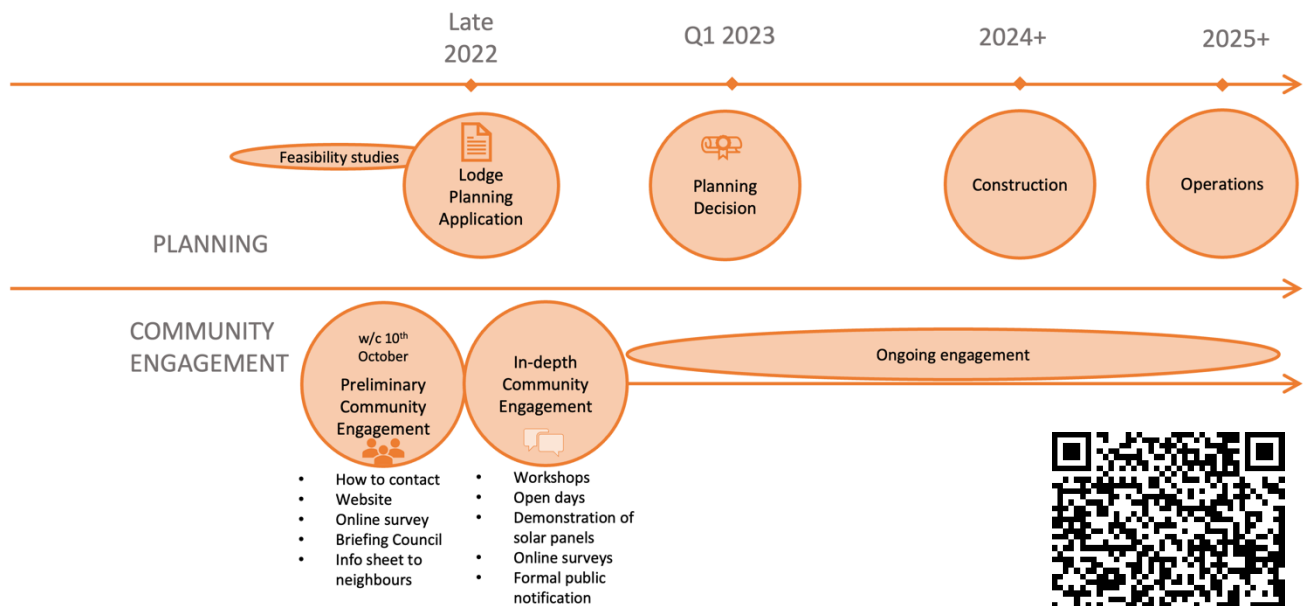
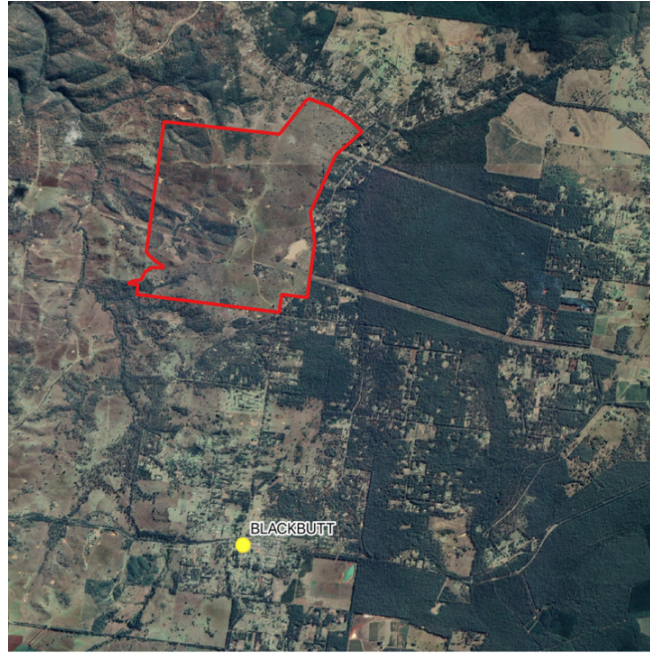
The engineering, procurement and construction process will be managed by an Australian company with a demonstrated ability to deliver regional projects that benefit the local community.

Tumuruu Solar Farm Development

The site

The 673-hectare site is situated at the northernmost point of Bowman Road, Taromeo. The site has been used for cattle grazing for many years. There have been attempts in the past to use the land for crops, however the soil has proven not to be of sufficient quality. The solar farm will use approximately 40% of the site.

The site has two existing 275KV transmission lines running through the property, reducing the need to erect additional transmission lines in the local area. These lines supply Brisbane and Southeast Queensland with energy from the Tarong coal fired power station, located twenty kilometres west of the site, which is scheduled to decommission in 2035. The energy generated by the solar farm will be supplied into the Powerlink wholesale network using the existing high voltage transmission lines on the property.



We're here to listen

Plan C are available to meet with you, or chat over the phone, about the proposed solar farm development and to hear your thoughts and concerns. You can contact Plan C, register for project updates and complete a short survey via the QR code, or go to <https://www.surveymonkey.com/r/ZVYZFKM>

Contact

tumuruu@planc.com.au

Jim Gleeson
M 0422 794 072

Ruby Gannon
M 0422 892 912

Visit our website

tumuruusolar.com.au

Australian Solar Enterprises and Plan C respectfully acknowledge the Traditional Custodians and pay respects to their Elders, past, present and emerging.