



**Amish Built, Inc.**  
**1390 Columbia Ave**  
**Lancaster, PA 17603**  
**717-431-8611**  
**Fax: 717-823-6940**

### *How to design your Amish built garage.*

-All of our garages begin in our huge production facility in New Holland, PA

*All garages start out as an engineered stamped blueprint. The blueprints will first have to be approved by your local building inspector. Once approved, the town, county or city in which you live will issue a building permit.*

*Our standard Amish Built garage includes (3) 30"x36" double pane, insulated glass windows with a 6-over -6 lite grid in-between the glass panes.*

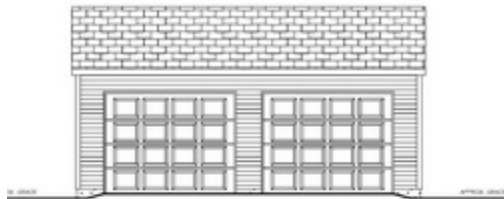
*(1)-36" fiberglass, insulated, raised panel entry door with a 9-lite glass and (2) 9'wx7'h raised panel garage doors or (1) 16' x 7' garage door (your choice).*

*Our standard siding is a double 4.5" Dutch Lap vinyl siding*

*We use GAF-Timberline, high definition, lifetime architectural shingles.*

*Our standard engineer roof truss starts with a 4/12 pitch. NEW 2018 5/12 Standard roof pitch*

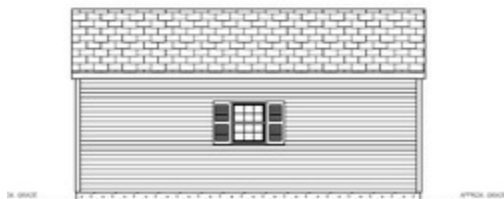
*Window and door locations are your choice as is roof ridge direction with either the gable facing forward or the eave side facing forward.*



FRONT ELEVATION  
SCALE: 1/4" = 1'-0"



RIGHT ELEVATION  
SCALE: 1/4" = 1'-0"



REAR ELEVATION  
SCALE: 1/4" = 1'-0"



LEFT ELEVATION  
SCALE: 1/4" = 1'-0"

## *Upgrading or designing your Amish built garage.*

Using our standard original garage to start you can change things to fit your ideas for a dream garage.

1. **Higher walls**, our standard height is 8' but we can build up to 12' walls (9,10,11 or 12)
2. **Changing the truss**. You can change the pitch or rise from our standard 4/12 to a 5/12, 6/12, 7/12, 8/12, 9/12, 10/12, 11/12 or 12/12 pitch. The pitch or rise is how many inches per foot the roof rises. For example an 8/12 pitch truss rises 8" for every 12" (foot) of roof. That would be twice as steep as a 4/12 pitch/rise.



**3. Attic packages.** Any truss pitch/rise 6/12 or greater can add an optional attic package. The attic package comes with stairs and a ¾' tongue groove floor which is rated for storage and or apartment space. \*check with your local zoning department about restrictions for living spaces above garages\* Also truss's with a pitch/rise of 8/12 or higher come with 2-additional windows and standard pine-box staircase with railing. 6/12 and 7/12 pitch/rise attic packages include a drop-stair case.

4. **Dormers.** Our standard "A" dormers are available in either 4' or 6' widths and come with (1) window. These are functional "walk-in" dormers.



We also offer wider "A" dormers and shed dormers. Shed dormers have a flat roof and typically stretch along most of the width of the roof but can be built in any size you like.

5. **Other options...**you may consider are glass in the garage doors, insulated garage doors or Carriage style garage doors.
6. **Siding.** If our vinyl siding does not match your home you can supply both a manufacturer specification and color or send a sample to our production facility for to us to try and match. The

same goes for the roof shingles. We do offer other siding choices such as LP Smart wood lap, Hardie Plank or painted T1-11.

**Misc. Options.** Garage door openers, bigger windows, more windows, wider and or taller garage doors, 12" overhangs on the gable soffits, thicker concrete floors, window trim instead of shutters. The list goes on to items you may want but we have not listed.

**This garage has almost all the upgrades we offer....**



**From design and engineering to foundation and garage installation including all the scheduled inspections with the building department. We handle just about everything.**

**SO.....**

**Start with our standard model and build from there. It's your garage make it beautiful!**