

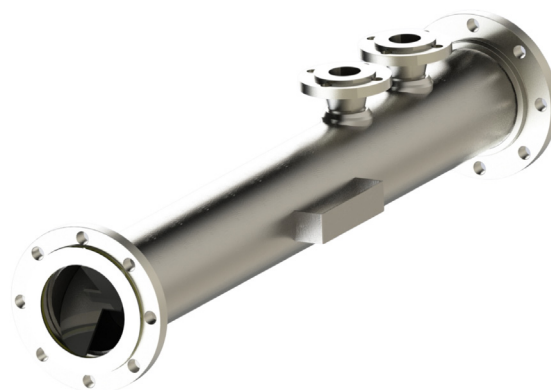
TRANSFER CUSTODY & FISCAL SAMPLING

PRODUCT DATASHEET / DS-009-EN_Rev.A

➤ SMS Spool Static Mixer

SAMPLEX™ SMS high-efficiency static mixing spools create a homogeneous flow within the pipeline, ensuring accurate sampling and water-cut measurement. Not only do they require no additional power source, but their design also achieves turbulent flow with a much lower Reynolds number compared to other conventional static mixers.

The spool is composed of a fixed arrangement of positive and negative elements that simultaneously create cross-flow mixing to increase turbulence and blending. The SAMPLEX™ SMS spool is highly efficient, allowing it to produce a homogeneous mixture with a short spool length thanks to its mixing-element design. The spool is engineered according to the customer's requirements



Specifications

- Mixing stages based on design calculations according to process conditions.
- Sizes from 2" up to 48" in diameter.
- Spool construction material: carbon steel, stainless steel, or other required material.
- Mixing element material: 316/316L stainless steel.
- Maximum pressure rating: ANSI 150, 300, 600, 900, and 1500.
- Process connections: RF, RTJ, NPT, or weld-prep.

Features

- Ideal for different flowing-condition systems.
 - Valve design and documentation specific to the
- process.
 - For integration with samplers, water-cut devices, or
- fast-loop sampling systems.
 - Ensures compliance with representative sampling
- requirements.
- For LACT applications and measurement systems.
- Simple and robust for various industrial mixing process applications.
- No moving parts, eliminating future issues with the mixing system.
- Low pressure drop that does not affect operating process conditions.
- Uniform density and temperature without compromising operating conditions.