

## Key Features

- Chemically bonds to mineral building surfaces, penetrating up to 17mm to create an insulation barrier
- Dries clear so it does not alter the appearance of the building
- For use on a range of substrates including brick, stone, concrete and sandstone

## Quality Standards

ProPERLA Masonry Creme has been UKAS tested & certified.

- EAD 090062-00-0404 - 25 year hygrothermal performance
- EAD 040083-00-0404 - external thermal insulation composite system
- BS EN ISO 7783 2011 - high breathability
- BS EN ISO 12572 - water vapour resistance
- EN ISO 15148:2002 - hygrothermal performance
- EN 15824:2009 - Water absorption, water vapour permeability, tensile strength, thermal conductivity and long-term durability



**20 year manufacturers  
guarantee**



**Find out more from our specialists:**

[www.properla.co.uk](http://www.properla.co.uk)

Manufactured in Germany under license for BECO TREAT ApS - Nebelvej 15 - 8700 Horsens

**PROPERLA®**  
SUPER HYDROPHOBIC COATINGS

**MASONRY CRÉME**

# Keep your home warm & dry

Invisible waterproof protection for masonry



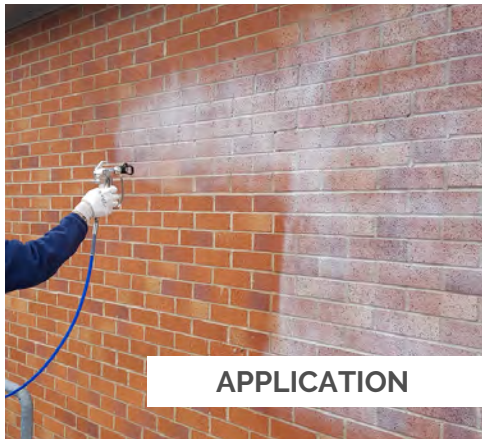
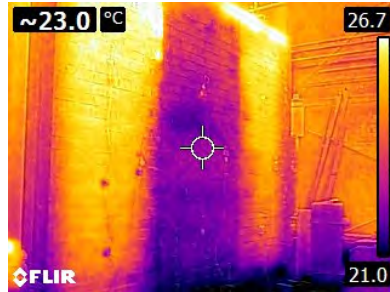
Super Hydrophobic    Self-Cleaning  
25 Year Proven Performance

## Keep the weather out & the warmth in

A dry house is a warm house. When the walls of your home get wet from wind driven rain, it decreases the thermal resistance of the walls and can result in increased heat loss, contributing to higher energy bills. Water acts as a thermal bridge causing heat to transfer away from the property, reducing the energy efficiency of your home.

ProPERLA Masonry Crème is a highly water repellent wall coating which improves energy efficiency by keeping walls dry. When rain comes into contact with coated walls, the water forms droplets that simply run off the surface, reducing the water absorption of the walls by up to 96.3%.

Independent tests have demonstrated that brickwork treated with ProPERLA were significantly more thermally efficient than untreated ones. The thermal image shown was taken during independent scientific testing and shows a 6°C difference in temperature between sections of the wall treated with ProPERLA and the untreated centre section.



**APPLICATION**



**AFTER TREATMENT**



## Protect

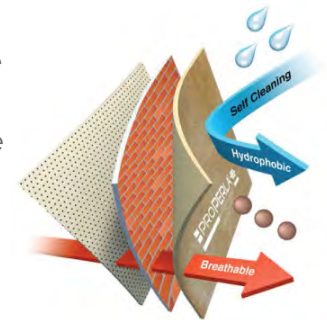
Moisture in the walls of your home can not only cause heat loss, it can cause a host of problems for your house, your health and your pocket too. By keeping your walls dry, you can help to prevent;

- Penetrating damp
- Accelerated decay of building materials
- Structural damage caused by sulphate attack
- Cracking of brickwork

Protect buildings from the damaging effects of the weather and give yourself peace of mind.

## Highly Breathable

ProPERLA Masonry Crème does not restrict the ability of your home to breathe. Independent testing (BS EN ISO 7783:2011) demonstrated the coating had little effect on air and moisture escaping. Unlike some stone and brick sealing products, it does not block the pores of the masonry by coating them with a thin film.



## Self-cleaning

Treated masonry remains clean and attractive as dirt is washed away with rainfall. The lack of moisture in the walls also helps to deter the growth of unsightly moss, algae or lichens.